



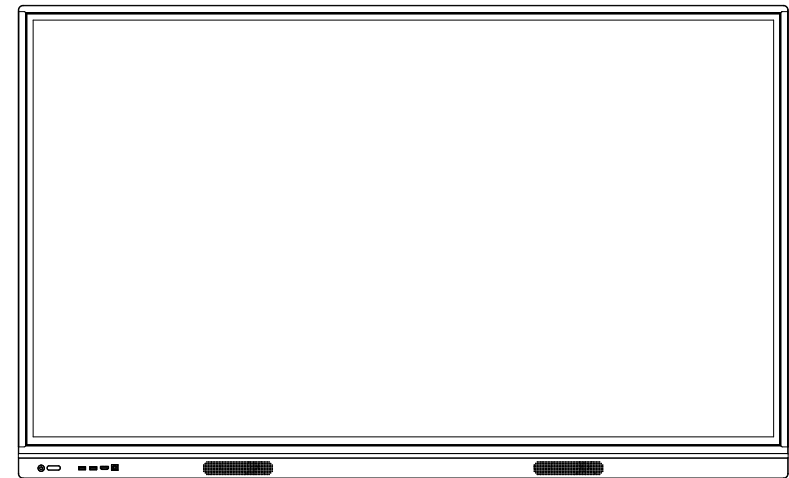
# LaserPro

# LaserPro

## Interactive Flat Panel

— Instruction Manual —

[www.laserpro.in](http://www.laserpro.in)



**Marketed By:-  
LaserPro Services Pvt Ltd**

The final interpretation right of all information in this article belongs to our company.  
All unauthorized and permitted copying is not recognized and should be prohibited.  
(This document may not fully reflect all the latest changes to the product, the actual product shall prevail)

# Disclaimer

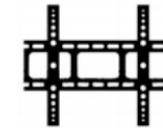
When there is one of the following situations, the free warranty obligation during the warranty period is not assumed.

- Cannot provide valid proof of purchase
- Tear off or damage the disassembly label without permission
- Hardware damage caused by improper assembly
- Product damage caused by abnormal external force
- Product damage caused by exceeding the allowable use environment
- Product damage caused by unauthorized modification or self-repair
- Product damage caused by natural disasters or other force majeure
- Violation of the product instruction manual, resulting in product damage

Please check the accessories when you unpack the product

Note: If the product you purchased is a customized model, please confirm whether your configuration meets the requirements when you receive the product. The customized model is not reflected in this manual, and there is a model distinction on the product nameplate.

## What's included ?



Wall Mount



Power Cable



Remote Control



Interactive Flat Panel



Screws



Stylus pen

## Optional Items



Mobile stand



OPS



Speakerphone



External camera



Smart pen



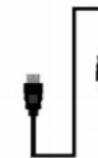
Projector



Audio Cable



Touch USB Cable



HDMI Cable



VGA Cable

# Directory

Safety and Precautions- . . . . .	1
The Quick Use Guide . . . . .	3
Install Wall Mount- . . . . .	4
Install OPS Computer- . . . . .	5
Functional Operation . . . . .	6
Simple Troubleshooting- . . . . .	9
Maintenance . . . . .	10

# Safety and Precautions

---

**Incorrect use can lead to an electric shock or a fire accident. To prevent dangerous situations, follow the following instructions when installing and cleaning the native machine; to ensure your safety and extend the multimedia interactive all-in-one service life, read the following safety precautions carefully.**

## 【Place】

- Do not place the machine in an unstable and easily inclined position.
- Do not place the machine in direct sunlight, near heating objects such as electric heating, or other heat sources and strong light sources.
- Do not place the machine near highly radiated equipment.
- Do not place the machine where it is wet or dripping.
- Do not insert any items into the machine.
- Do not place heavy objects on the machine.

## 【Power Supply】

- Check and ensure that the voltage value of the nameplate on the rear shell matches the main supply voltage value.
- Unplug the power cord and antenna plug during a thunderstorm and lightning weather.
- Please unplug the power plug when the room is unattended or unused for a long time.
- Avoid physical or mechanical damage to the power cord.
- Use a special power cord and do not modify and extend the power cord.
- Check and make sure the AC power ground is on.

## 【Screen】

- Do not use hard or sharp items instead of a writing pen when writing on the screen.
- Unplug the power plug first when cleaning is required. Wipe the screen with a flexible, dust-free, dry cloth.
- Do not clean the machine with water and spray cleaners.
- Do not display the high-brightness pictures on the screen for a long time.

## 【Temperature】

Do not place this machine near an electric heater or radiator.

When the machine is moved from low temperature area to high temperature area, in order to distribute the condensation fully, please place it for a period of time and then power on.

Normal operating temperature of the machine is 5-40°C.

## 【Humidity】

Do not expose the machine to rain, wet or near water.

Please ensure that the room is dry and ventilated.

Normal operating humidity of the machine is: (20%RH-80%RH);

atmospheric pressure: (86kPa-106kPa).

Why does fog often appear on the screen?

In order to ensure the safety of the screen, a layer of tempered glass is added to the outside of the screen. Meanwhile, there must be a certain gap between the screen panel and tempered glass to guarantee heat dissipation. It is used to reserve air channels for cross-ventilation.

The reason why fog is produced is that there is a temperature difference between the screen temperature and the outside temperature. The hot air meets the lower temperature of the glass surface to condense and produce water mist. The water mist does not affect normal use.

Generally, the mist will slowly evaporate and disappear after a few hours of use.

## 【Ventilation】

Place the machine in a ventilated place to ensure good heat dissipation.

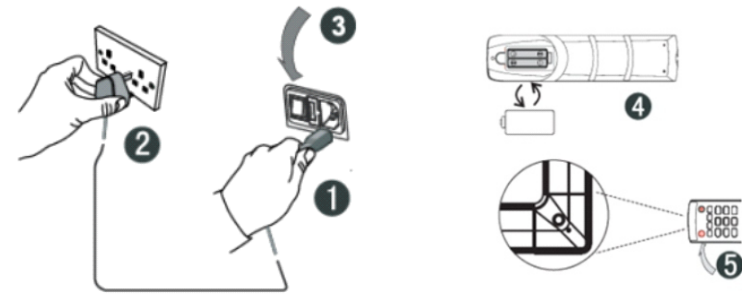
Ensure the space ventilation around and behind the whole machine and more than 20 cm on the top.

The vents do not cover items such as newspapers, tablecloths, and curtains.

Do not plug any foreign matter into the machine through air vents or openings. There is high voltage inside the machine, inserting a foreign body will cause electric shock or short circuit of internal parts.

# The Quick Use Guide

## 【Start-on for use】



- ①Connect the power cord tail to the power jack on the back of the machine.
- ②Connect the power cord plug to the power supply.
- ③Turn on the power switch on the machine and the indicator on the front of the machine is red.
- ④Fit the battery correctly according to the positive and negative battery identification on the back of the remote control.
- ⑤Point the remote control at the remote control reception window of the machine, press the power key of the remote control to turn on, and the indicator shows green.

Note: The built-in computer channel is "built-in computer". For access, use the Input key on the remote control or through the shortcut icon in the suspended ball.

## 【Use the preparation】

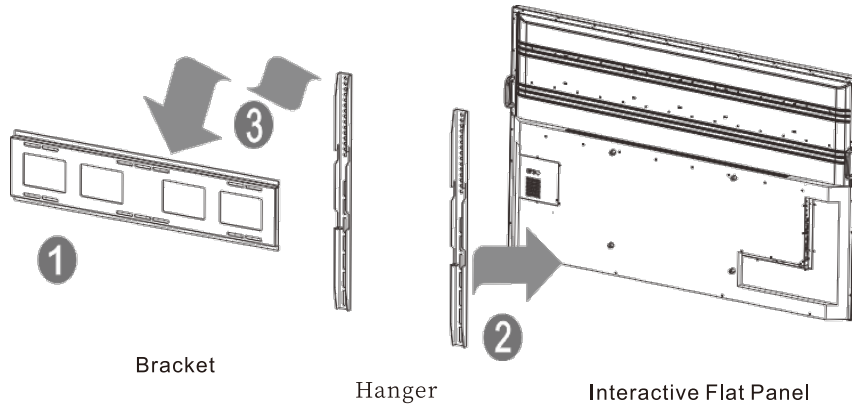
- (1)Verify whether the touch is accurate, use the touch pen to write on the multimedia all-in-one screen, and observe whether the cursor arrow is consistent with the brush, which means that the touch is stable and can be used normally;
- (2)Click on the whiteboard icon to open the smart whiteboard;
- (3)To copy the information from the mobile U disk, insert the U disk into the all-in-one USB port, copy and paste, and support double-click to open playback;

# Install Wall Mount

1. Please install the bracket to the wall or mobile stand according to the installation guide of the mobile stand or bracket.

### Installation Precautions:

When constructing on the wall, the load-bearing safety of the wall should be considered.



2. Please refer to the installation guide to install the rack on the machine.

3. Please hang the device with the bracket installed on the mobile stand and lock the fixing screws. Please pay attention to safety during transportation.

# Install OPS Computer

1. Install the OPS computer (OPS has been selected at the time of purchase and has been installed in the factory) OPS compatible: 42MM/30MM thickness; Interface: 80 PIN international standard OPS interface.

### 【Installation Precautions】:

- It is strictly forbidden to operate the OPS computer with power on and does not support hot plugging.
- Align the OPS computer with the OPS installation slot on the machine, gently push it in and insert it completely against the built-in OPS adapter plate.
- Due to the problem of the interface standard, it is recommended that the customer use the designated brand and model when upgrading the OPS configuration.

Ways of Walls

Since the surface of the interactive panel is tempered glass, it is easy to produce water mist on the glass surface. Please do not place the machine under an air conditioner. If the water atmosphere is generated, it can be dried for a period of time.

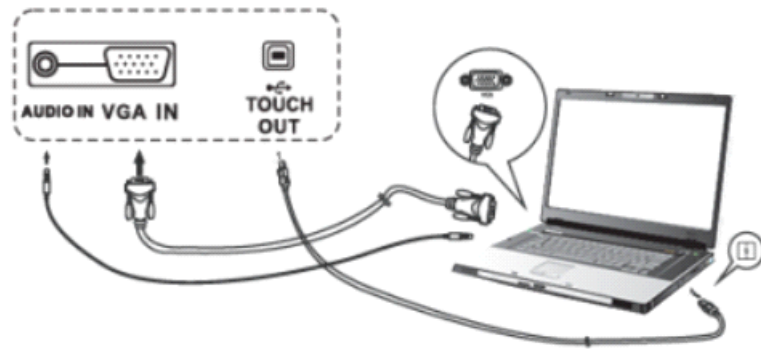
Mobile stand method

In the process of moving and parking the machine, please pay attention. Turn the brake of the mobile frame on or off.

# Connections and Settings

## 【Touch output】

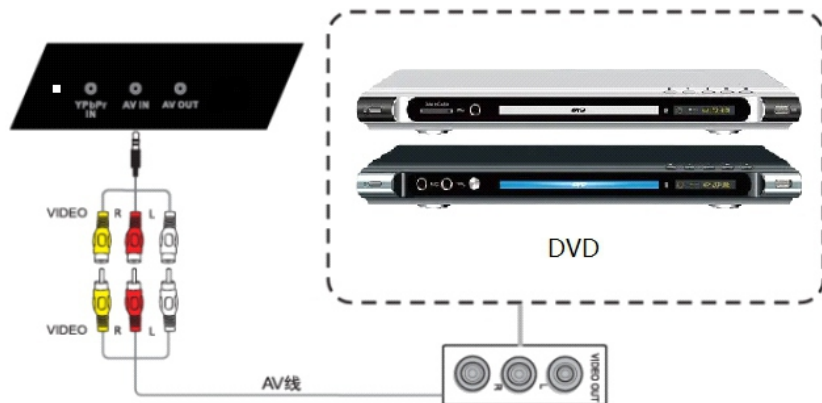
Using the VGA or HDMI, USB touch line, connect the external computer and the touch port as shown in the figure below, and switch the image of the computer to the VGA or HDMI.



Note: The side Touch port corresponds to the HDMI1, HDMI2 and VGA channels, and the front Touch corresponds to the front HDMI channel.

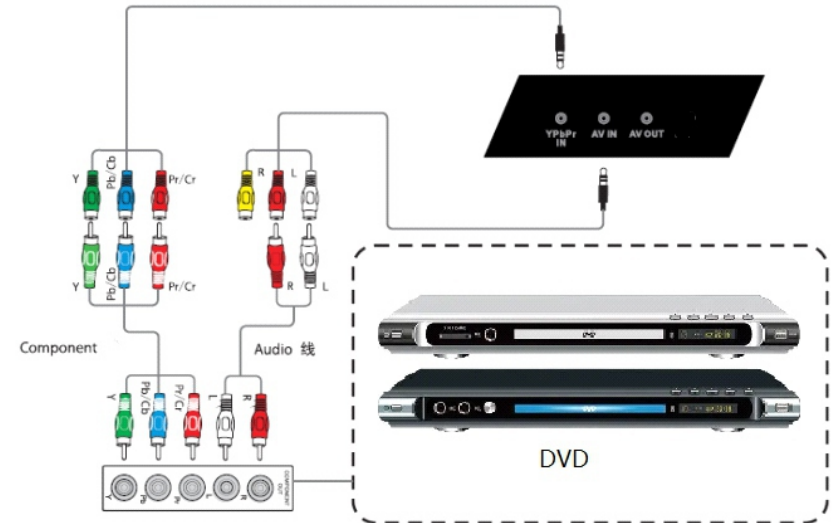
## 【AV IN】

- (1) Connect the AV output audio device with the AV audio cable (yellow for video, red for right channel and white for left channel);
- (2) The signal source channel switches to the AV port.



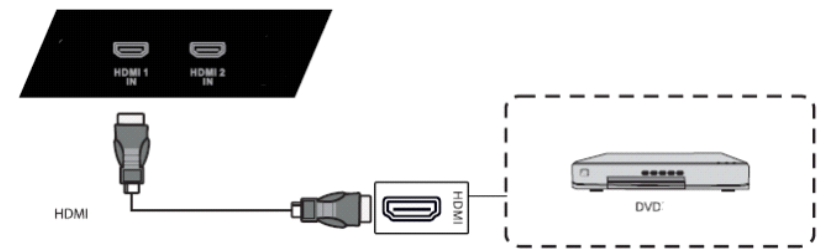
## 【YPbPr】

- (1) Connect audio and video devices with YPbPr output with YPbPr audio lines;
- (2) The channel switches to the YPbPr channel.



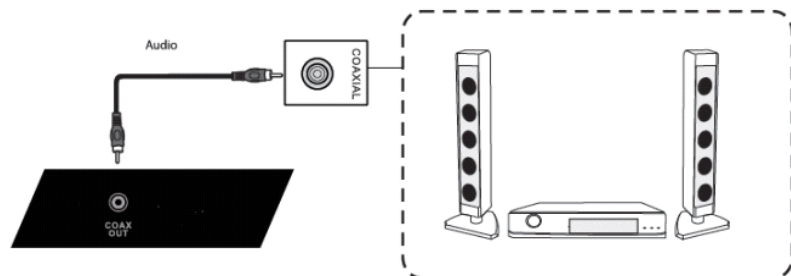
## 【HDMI】

- (1) Connect audio and video devices with HDMI output with a HDMI cable;
- (2) Switch to the corresponding HDMI terminal.



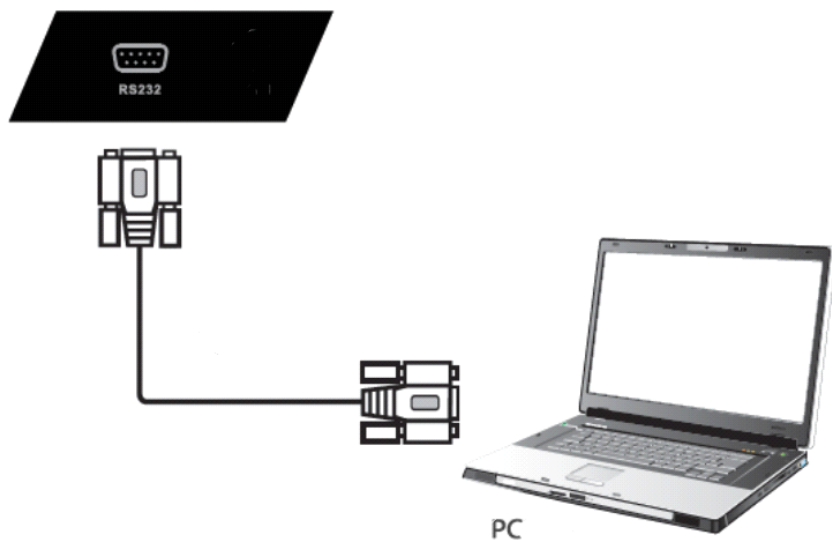
## 【Coaxial】

- (1) Connect audio equipment with coaxial output;
- (2) Play the audio.



## 【Rs232】

- (1) Connect the PC with the RS232 line;
- (2) After a successful connection, the central control device can control certain functions of the machine, such as switching machines.



## Simple Troubleshooting

Before preparing to repair, read the following table to see if you can find the fault you are encountering the reason. When you are sure that you follow the instructions on this page completely and still cannot eliminate the fault, Please contact the product service center for product repair.

System error	
Phenomenon	Solution
No picture or sound	Check if the power cable is connected to the wall outlet
	Check if the signal cable is properly connected
	Check whether the power switch of the external device is turned on
	Make sure the machine is not in standby
The picture is normal without sound	Check if the volume is set to minimum
	Check if the volume is set to mute
	Check if the external audio is properly connected
No picture or picture is black and white	Check and adjust color settings
	Check and adjust the color system
Sound and image are disturbed	Try to find the electrical appliances that affect the all-in-one and keep it away from the all-in-one
	Try to plug the power plug of the all-in-one into another socket
Blurred picture or distorted snowflake image	Check whether the signal line connection is loose
	Set again and micro signal input
Remote control malfunction	Check if the remote control battery is installed correctly
	Check whether the battery of the remote control is exhausted, and replace the battery in time
	Check whether the polarity of the remote control battery is installed in the correct direction
	Check whether there are foreign objects obstructing the position of the remote control signal emission



# Maintenance

## The importance of maintenance:

Maintenance can prevent small problems from becoming big problems and ensure the safety of the machine.

Maintenance can maximize the performance of the machine and achieve a longer service life.

## Maintenance tools:

Clean a lint-free cloth, such as a dust-free cloth.

Cleaning agents, such as industrial alcohol

## Maintenance measures:

Before maintenance, turn off the whole machine, turn off the power I/O switch, and unplug the power cable to ensure your safety.

Soak the cloth in the detergent and twist it to half dryness without dripping water.

Wipe the dust on the surface of the protective glass of the screen and the frame of the whole machine.

Wipe 2 to 3 times, preferably with a new clean cloth to dry the remaining detergent.

After the cleaning is completed, the standby device can be used normally after the water is naturally dried.

# Develop good machine habits

When the machine is not in use, please turn off the power I/O switch or unplug the AC power cable. If you do not use the machine for a long time, please wrap it in a protective cover and store it in a cool and dry place.

part	Pb	Hg	Cd	Cr(VI)	PBB	PBDE
Plastic parts	O	O	O	O	X	X
LCD screen PDP screen	X	X	O	O	O	O
Circuit board	X	O	O	O	O	O
Hardware	X	O	O	O	O	O
Decorating Parts						
Speaker	X	O	O	O	O	O
remote control	X	O	O	O	O	O
Power cable	X	O	O	O	O	O

## Name and content of toxic and hazardous substances or elements in the product:

O: Indicates that the content of this toxic and hazardous substance in all homogeneous materials of this part is below the limit requirement of SJ/T11363-2006

X: Indicates that the content of the toxic and hazardous substance, in at least a certain homogeneous material of the part, is above the limit requirement of SJ/T11363-2006

## Technical Description:

The hardware structural parts, injection molded parts, connectors and most of the electronic parts of this machine comply with the requirements of China and EU RoHS directives. Only a few parts, due to the global technical restrictions and the fact that it may affect product reliability, have not been replaced by Non-toxic and harmless substances or elements yet. However, consumers should rest assured that it will not cause health damage to users under normal conditions of use.