

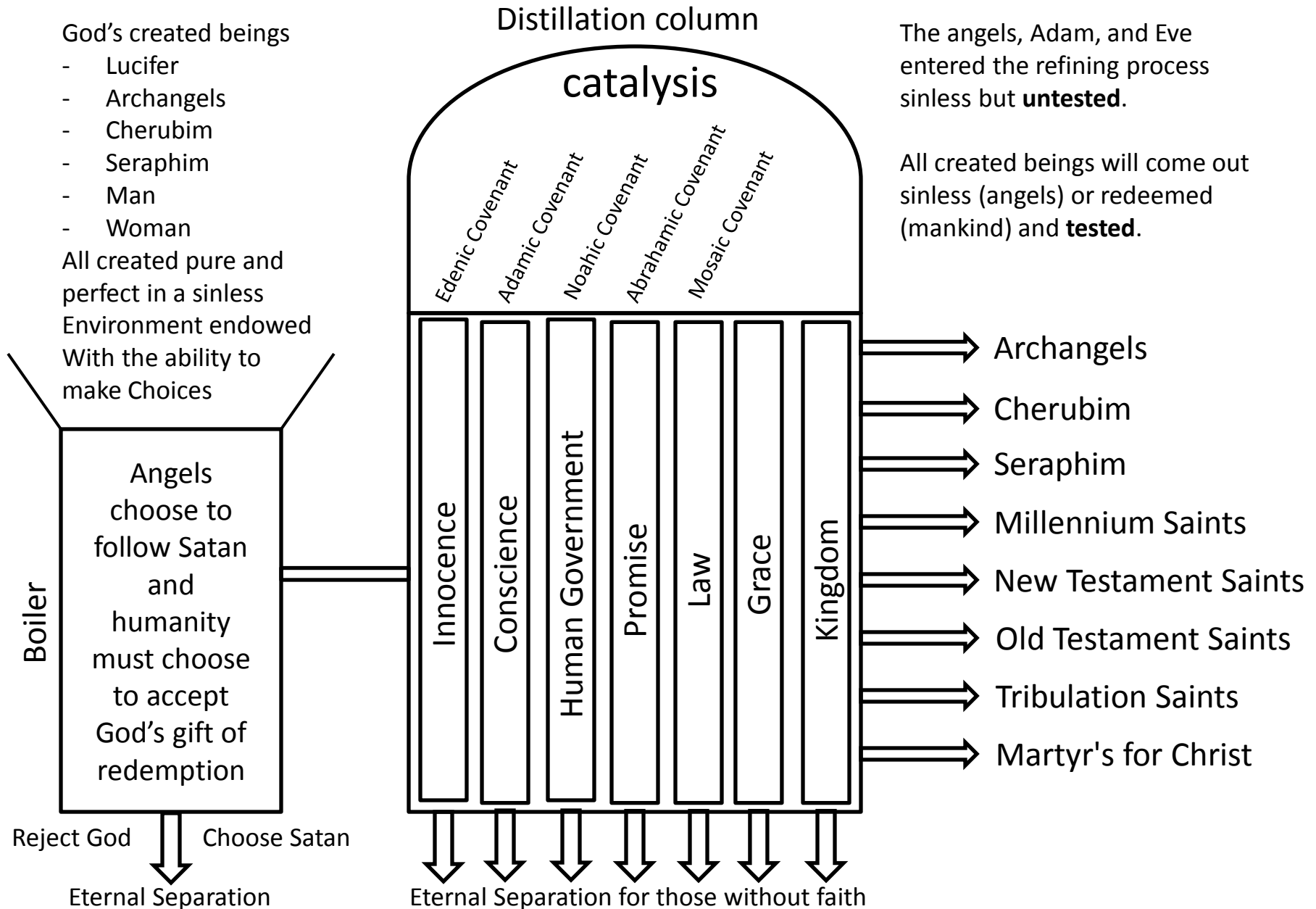
# Refining a Creation for Eternity

The Revealed Plan of God from Eternity Past to Eternity Future



[www.RefiningaCreation.org](http://www.RefiningaCreation.org)

# God's Refining Process for His Created Beings



# Refining a Creation for Eternity

## God's Economies for Mankind

### Overview



Edenic



Adamic

Innocence



Noahic

Human Government



Abrahamic

Promise



Mosaic

Law



Postponed

Grace

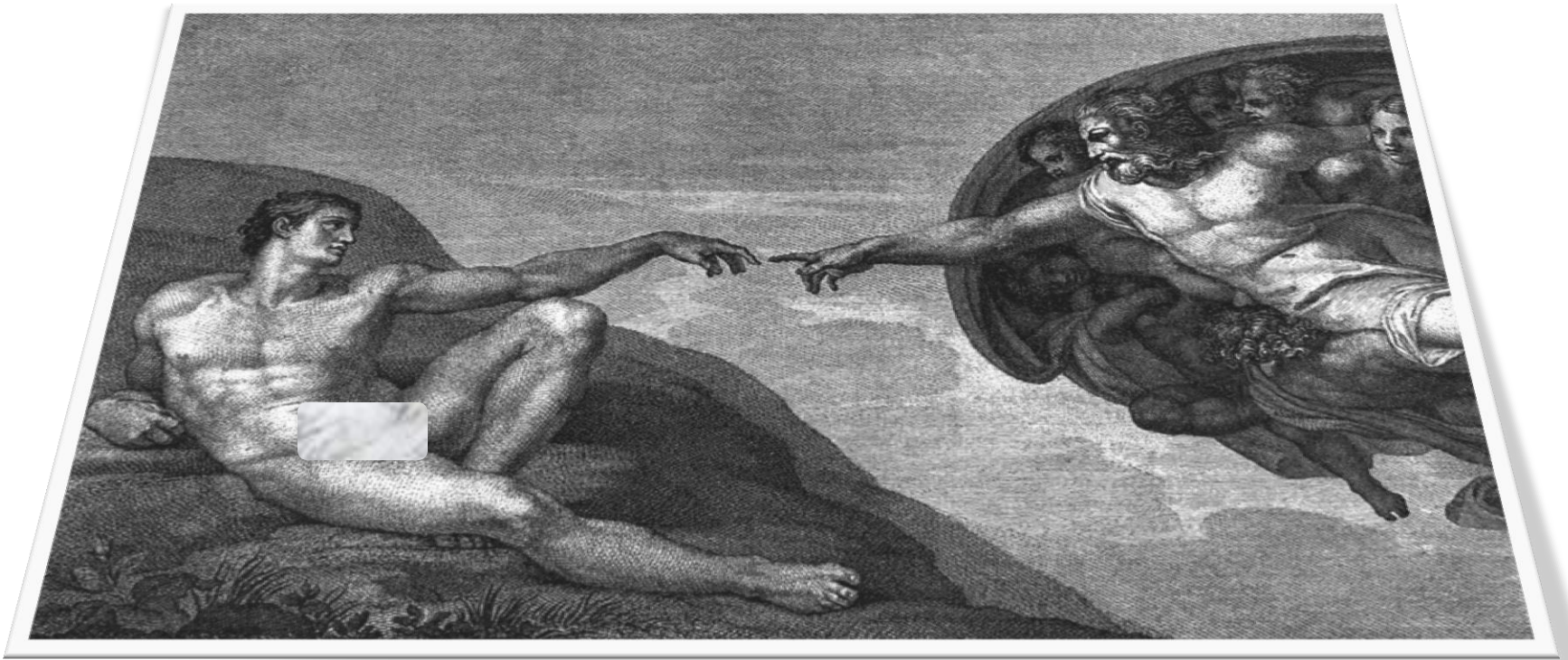


Fulfillment

Kingdom

# Refining a Creation for Eternity

## The First Economy



# Refining a Creation for Eternity

## Review of past lessons

### Edenic Covenant (Gen 1:28-30; 2:15-17; Hos 6:7)

#### Parties to the Covenant

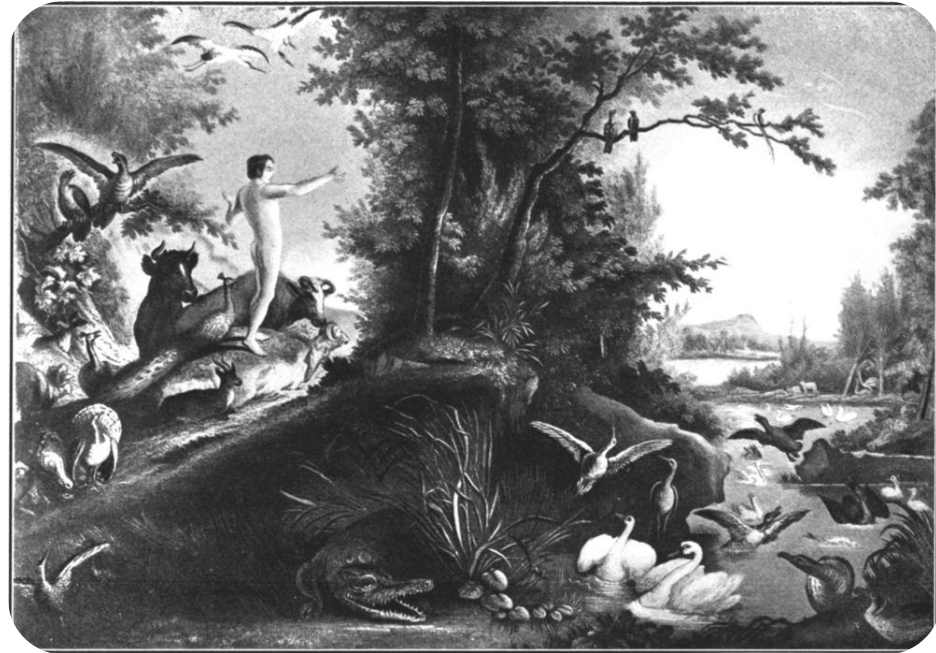
- God and Adam

#### Conditions of the Covenant

- Be fruitful, multiply, fill the earth
- Subdue the Earth
- Rule over the animal kingdom
- Plants are for food (vegetarian)
- Defined roles
- Guard the garden
- Not eat from one tree
- Penalty for violating the commands is death

#### Token of the Covenant

- Tree of Life



# Refining a Creation for Eternity

## Review of past lessons

### Dispensation of Innocence

#### Man's Responsibilities

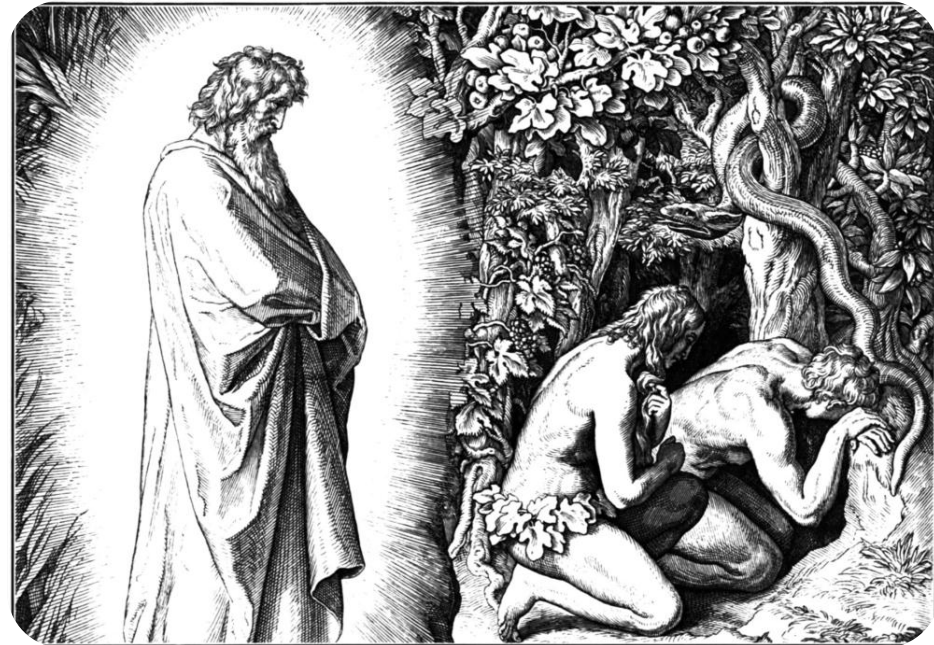
- Man's responsibilities in the garden were to fulfill the Edenic Covenant, essentially to multiply and fill the Earth and subdue it. Mankind was forbidden to eat from the tree of the knowledge of good and evil.

#### Man's Failures

- Man's failure was to eat of the fruit of the Tree of Knowledge of Good and Evil. It is important to note that while the woman was deceived, the man made a conscious decision to disobey God.

#### The Resulting Judgment

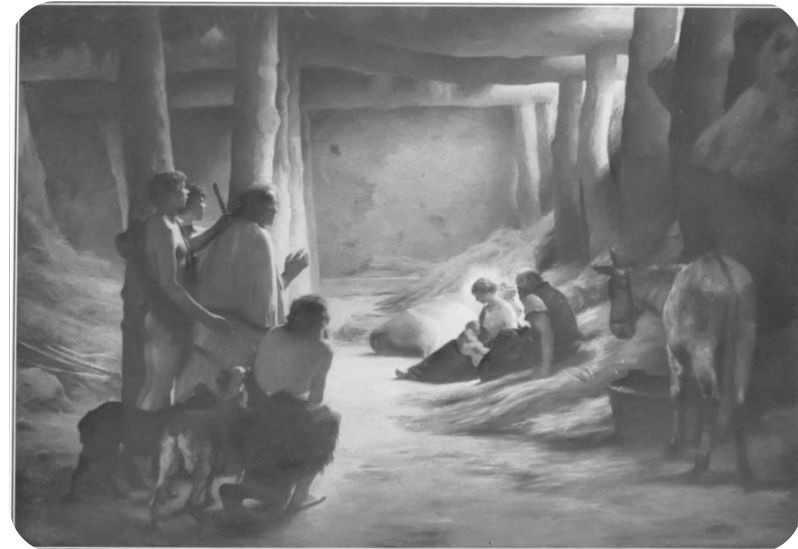
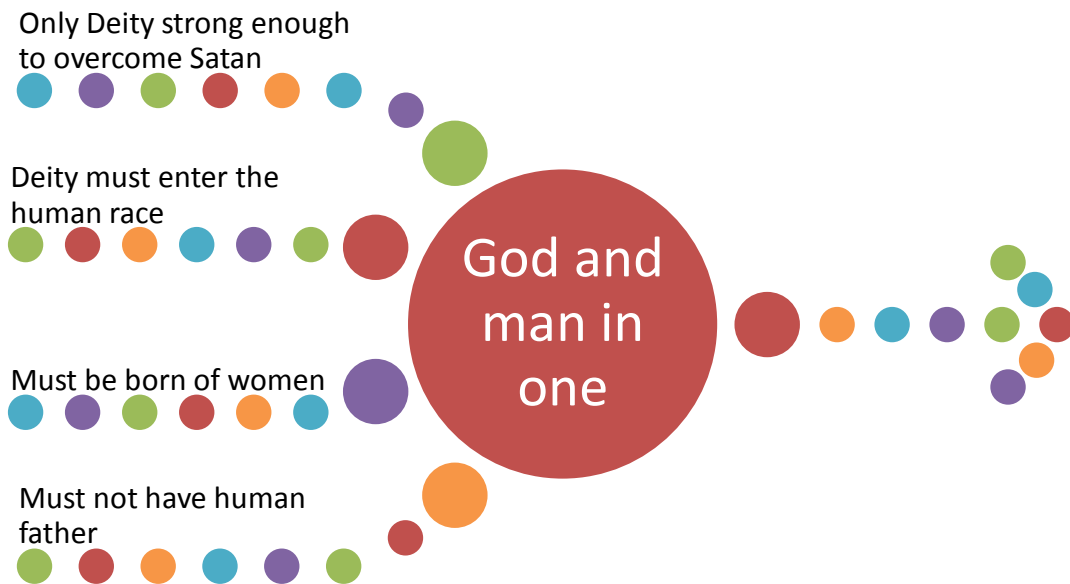
- Pain in childbirth, Authority struggle, Earth antagonistic to man, Man irresponsible to animals, Plants of the field for food, Expelled from Eden, Spiritual and physical death



# Refining a Creation for Eternity

## Review of past lessons

### The Problem of Human Redemption



# Refining a Creation for Eternity

## Review of past lessons

### Approaching God in the Dispensation of Innocence

#### God walked with man

- Genesis 2:15 - Then the LORD God took the man and put him into the garden of Eden to cultivate it and keep it.
- Genesis 3:8 - They heard the sound of the LORD God walking in the garden in the cool of the day,

#### God spoke to man

- Genesis 2:16 - The LORD God commanded the man, saying, "From any tree of the garden you may eat freely;

#### God had fellowship with man

- Genesis 2:19 - Out of the ground the LORD God formed every beast of the field and every bird of the sky, and brought them to the man to see what he would call them; and whatever the man called a living creature, that was its name.





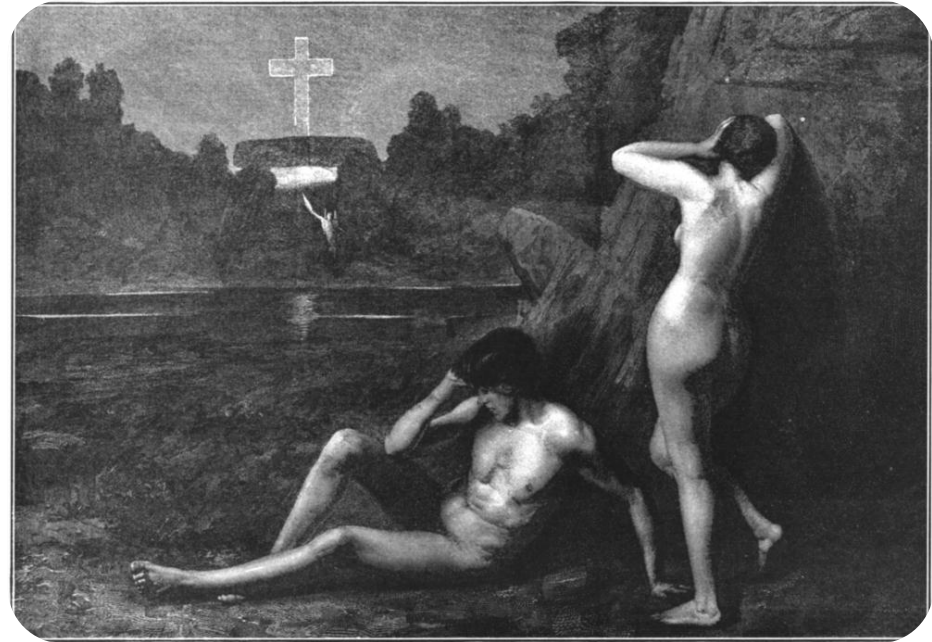
# Refining a Creation for Eternity

## Review of past lessons

### Protevangelium (The First Gospel)

#### Genesis 3:14-15

- The LORD God said to the serpent, “Because you have done this, Cursed are you more than all cattle, And more than every beast of the field; On your belly you will go, And dust you will eat All the days of your life; And I will put enmity Between you and the woman, And between your seed and her seed; He shall bruise you on the head, And you shall bruise him on the heel.”



# Refining a Creation for Eternity

## Review of past lessons

### Angelic Conflict

#### Satan gains control of Earth

- Satan scored a tactical victory and gained control of earth. He attacked man's volition which is the focal point of the entire angelic conflict. In winning the victory, Satan lost the war and opened up the opportunity that allows God to demonstrate far beyond anything imaginable how great His love is.



# Refining a Creation for Eternity

## The Second Economy



# Refining a Creation for Eternity

## Review of past lessons

### Adamic Covenant (Gen 3:14 – 3:21)

#### Parties to the Covenant

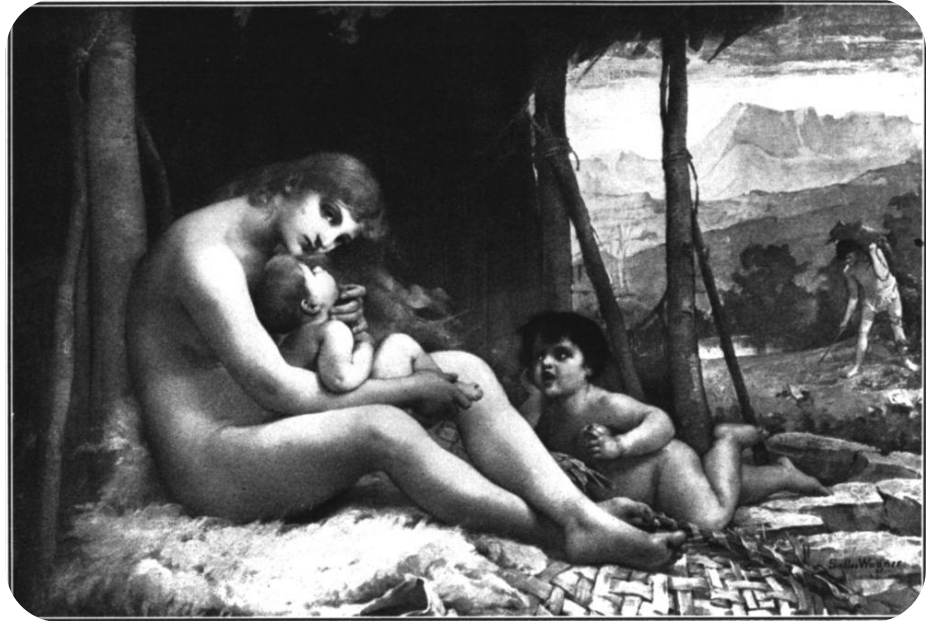
- God and Adam as the representative for mankind

#### Conditions of the Covenant

- Transformation of the animal kingdom
- Protevangelium (first gospel) and promise of Satan's defeat
- Woman cursed in area of assigned duties
- Man cursed in area of assigned duties
- Physical death (return to ground)
- Man remains a vegetarian

#### Token of the Covenant

- Spiritual death



# Refining a Creation for Eternity

## Review of past lessons

### Dispensation of Conscience

#### Man's Responsibilities

- Man's responsibilities, having been ejected from the garden, was to fulfill the Adamic Covenant, essentially to multiply and fill the Earth. Mankind was to respond to God through the prompting of his conscience and as evidence of his faith in the promised seed, to bring an acceptable blood sacrifice as God had instructed them to do.

#### Man's Failures

- Mankind, having been given the ability, through their conscience, to desire a relationship with God and the provision, through blood sacrifices, to approach God, failed to do so and instead followed after their own evil lusts. The wickedness and evil became so great and widespread, God decided to let mankind start anew.

#### The Resulting Judgment

- God, being true to His word, spared the only faithful humans and a small remnant of air breathing creatures and started over in order to fulfill his promise of redemption



# Refining a Creation for Eternity

## Review of past lessons

### Approaching God in the Dispensation of Conscience

#### Approach God by Faith

- Hebrews 11:4 - By faith Abel offered to God a better sacrifice than Cain, through which he obtained the testimony that he was righteous, God testifying about his gifts, and through faith, though he is dead, he still speaks.

#### Blood sacrifice as example of faith

- The test then becomes “with a conscience, guided by that conscience, will man choose to do good and approach God by means of sacrifice as the example of the sacrifice that God indicated”.
- Leviticus 17:11 - ‘For the life of the flesh is in the blood, and I have given it to you on the altar to make atonement for your souls; for it is the blood by reason of the life that makes atonement.’



# Refining a Creation for Eternity

## Review of past lessons

### At The End Of The Second Economy

#### Promise of Redemption Maintained - Genesis 6:8-9, 18; 7:1

- But Noah found favor in the eyes of the LORD. These are the records of the generations of Noah. Noah was a righteous man, blameless in his time; Noah walked with God.
- “But I will establish My covenant with you; and you shall enter the ark—you and your sons and your wife, and your sons’ wives with you.
- Then the LORD said to Noah, “Enter the ark, you and all your household, for you alone I have seen to be righteous before Me in this time.

#### Angelic Conflict - 2 Peter 2:4; Jude 6

- For if God did not spare angels when they sinned, but cast them into hell and committed them to pits of darkness, reserved for judgment;
- And angels who did not keep their own domain, but abandoned their proper abode, He has kept in eternal bonds under darkness for the judgment of the great day,

# Refining a Creation for Eternity

## The Third Economy





# Refining a Creation for Eternity

## Review of past lessons

### Noahic Covenant (Genesis 8:20 – 9:17)

#### Parties to the Covenant

- God and Noah as the representative for mankind

#### Conditions of the Covenant

- Be fruitful, multiply and fill the earth
- Man to be feared by animals
- Mankind allowed to eat meat
- Mankind not to eat or drink blood
- Institution of capital punishment
- Never again a universal flood

#### Token of the Covenant

- Rainbow



# Refining a Creation for Eternity

## The Third Economy

Noahic Covenant (Genesis 8:20 – 9:17)

### Edenic responsibility

Be fruitful and multiply

Women to help man

Subdue harmonious Earth

Rule over animals

Every plant for food

Serve God and guard Eden

Not to eat of tree

### The curse for unbelief

Pain in childbirth

Authority struggle

Earth antagonistic to man

Man irresponsible to animals

Plants of field for food

Expelled from Eden

Spiritual death to physical death

### Noahic responsibility

Be fruitful and multiply

Institute government

Seasons are introduced

Man feared by animals

Meat for food

Fill the earth

Capital punishment

# Refining a Creation for Eternity

Review of past lessons

## The Divine Institutions



# Refining a Creation for Eternity

## Review of past lessons

### Dispensation of Human Government

#### Man's Responsibilities

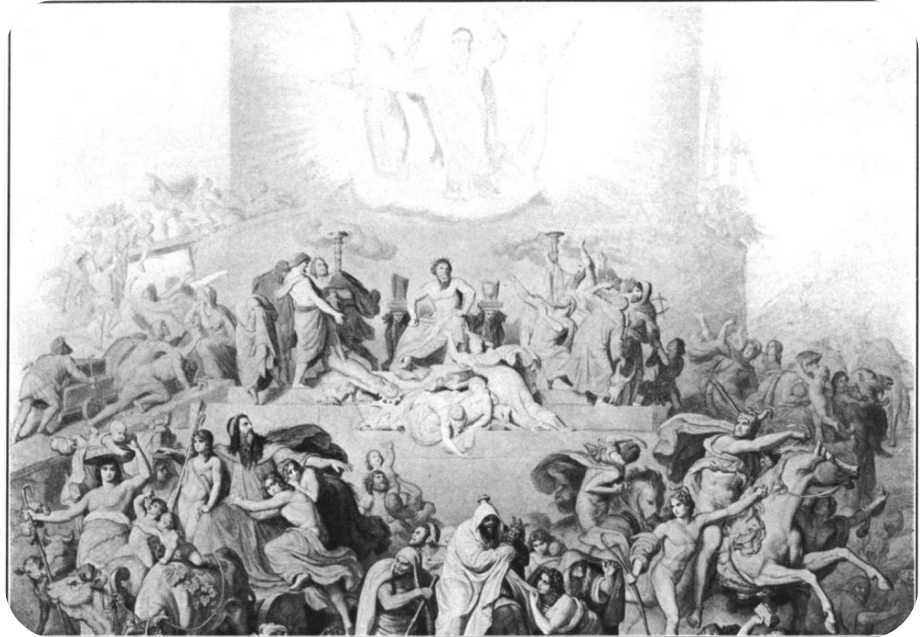
- Man's responsibilities were to fulfill the Noachic covenant. Mankind was to be fruitful, multiply, and fill the earth. Mankind was to govern itself with the full authority of capital punishment.

#### Man's Failures

- Failure to govern successfully appeared on the scene almost immediately, for Noah became drunk and incapable of ruling. The people, instead of obeying God's command to scatter and fill the earth, conceived the idea of staying together and building the tower of Babel to help achieve their aim. Fellowship with man replaced fellowship with God.

#### The Resulting Judgment

- As a result, God sent the judgment of the tower of Babel and the confusion of languages. He also graciously intervened in that He did not utterly destroy the nations but chose to deal graciously with Abraham and his descendants.



# Refining a Creation for Eternity

## The Third Economy

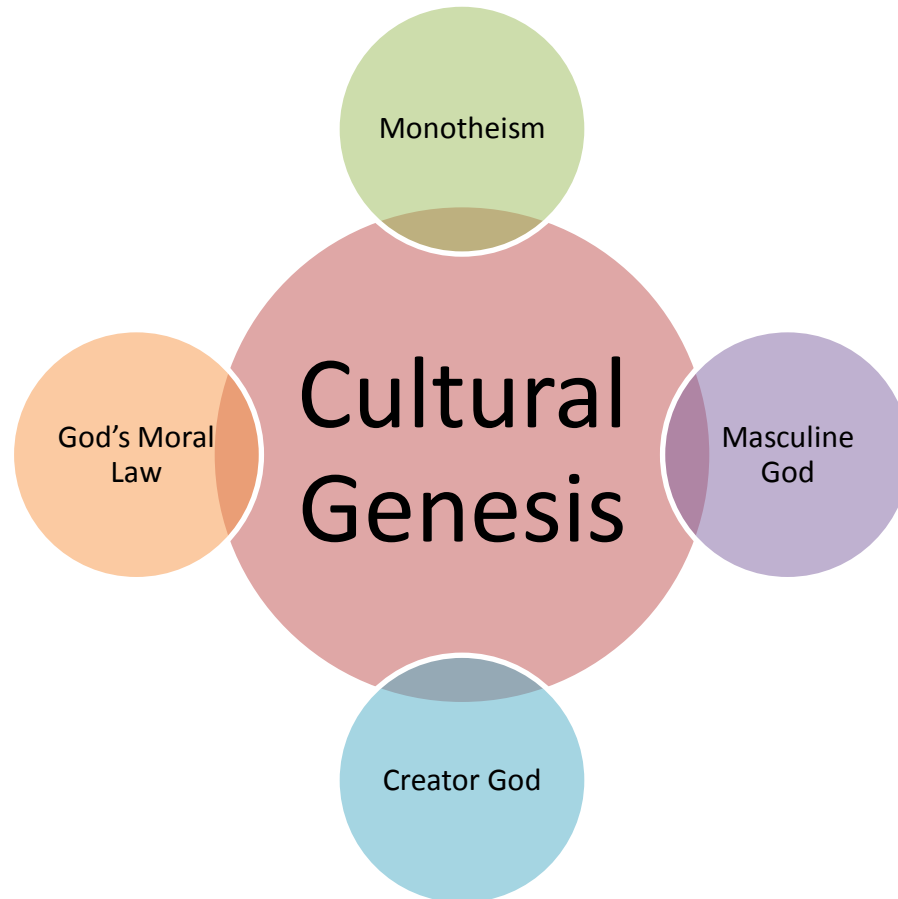
### Life in the New World



# Refining a Creation for Eternity

Review of past lessons

## From Monotheism to Polytheism



# Refining a Creation for Eternity

## Review of past lessons

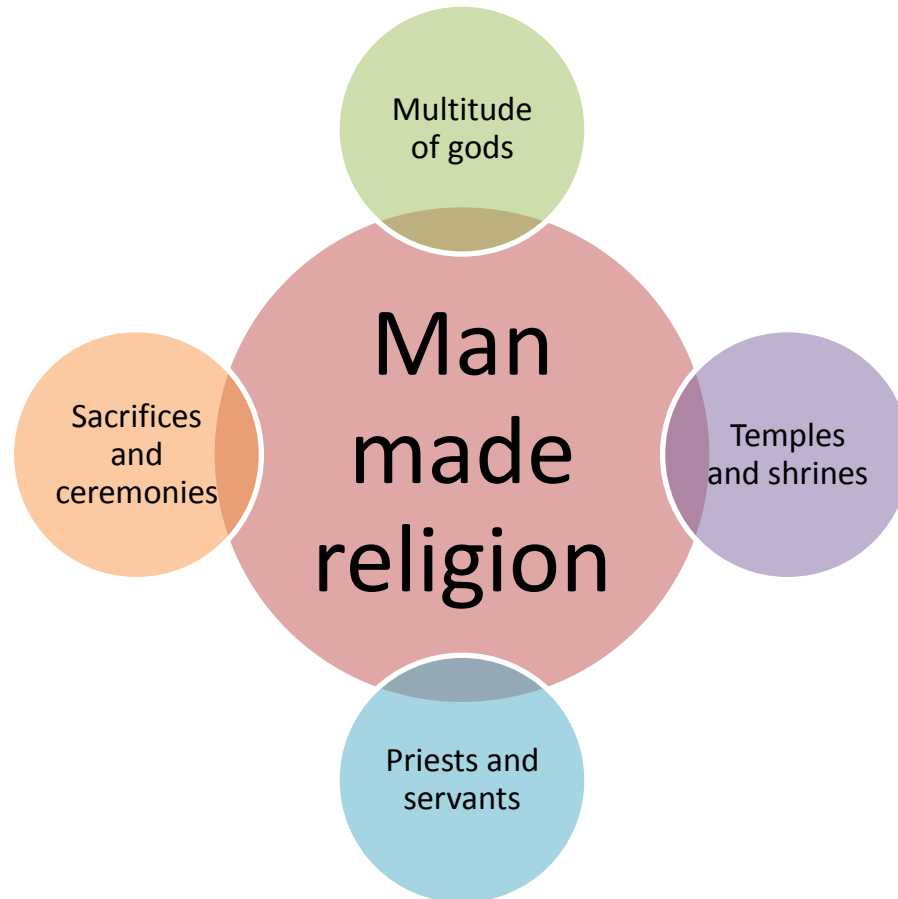
### From Monotheism to Polytheism (cont.)



# Refining a Creation for Eternity

## Review of past lessons

### From Monotheism to Polytheism (cont.)

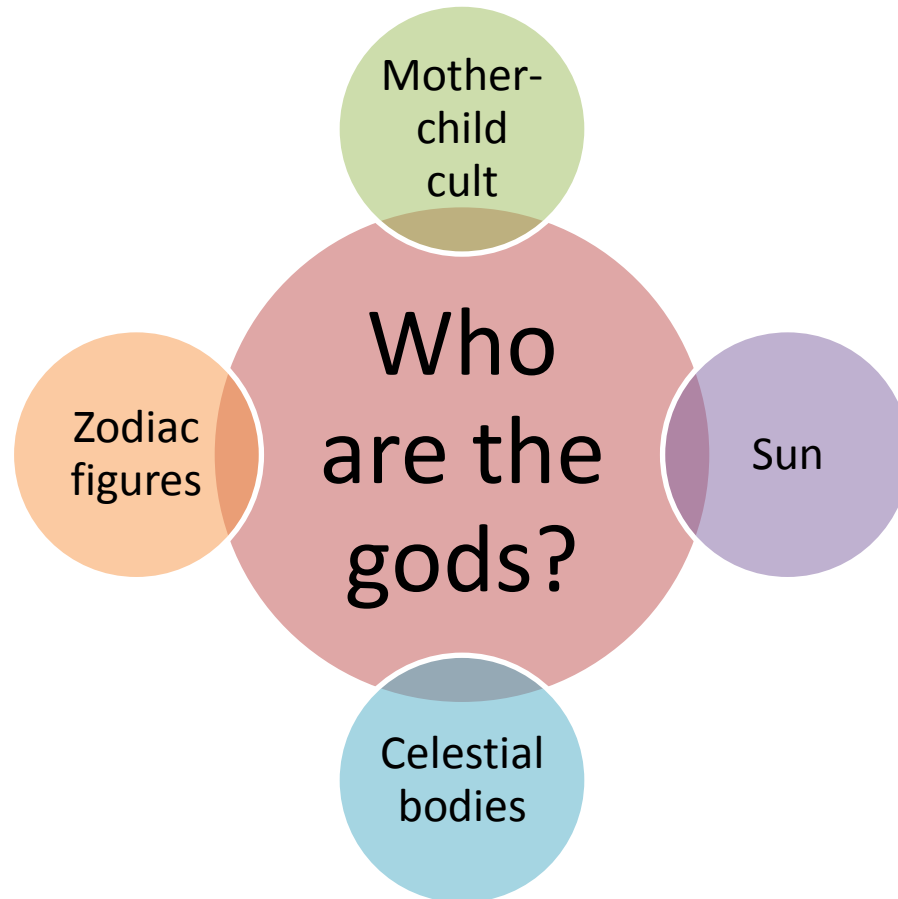




# Refining a Creation for Eternity

## Review of past lessons

### From Monotheism to Polytheism (cont.)



# Refining a Creation for Eternity

## The Third Economy

### Life in the New World

How to approach God – The example of Job

Views on the time when Job lived range all the way from the Patriarchal Age (Abraham, Isaac, and Jacob—approximately 2100 to 1900 B.C.) to the sixth century B.C. Several factors point to the time of the patriarchs:

Job lived 140 years after his calamities (42:16) so he may have lived to about 210.

This corresponds roughly to the length of the patriarchs' lives. Terah, Abraham's father, died at the age of 205; Abraham lived to be 175; Isaac lived 180 years; and Jacob died at the age of 147.

Job's wealth was reckoned in livestock (1:3; 42:12), which was also true of Abraham (Gen. 12:16; 13:2), and Jacob (Gen. 30:43; 32:5).

# Refining a Creation for Eternity

## The Third Economy

### Life in the New World

How to approach God – The example of Job (cont.)

The Sabeans and Chaldeans (Job 1:15, 17) were nomads in Abraham's time, but in later years they were not nomadic.

The Hebrew word *qešîṭâh*, translated “piece of silver” (42:11), is used elsewhere only twice (Gen. 33:19; Josh. 24:32), both times in reference to Jacob.

Job's daughters were heirs of his estate along with their brothers (Job 42:15). This, however, was not possible later under the Mosaic Law if a daughter's brothers were still living (Num. 27:8).

Literary works similar in some ways to the Book of Job were written in Egypt and Mesopotamia around the time of the patriarchs.

# Refining a Creation for Eternity

## The Third Economy

### Life in the New World

How to approach God – The example of Job (cont.)

The book of Job includes no references to the Mosaic institutions (priesthood, laws, tabernacle, special religious days and feasts).

The name šadday is used of God 31 times in Job (compared with only 17 times elsewhere in the OT) and was a name familiar to the patriarchs (see comments on Gen. 17:1; also cf. Ex. 6:3).

Several personal and place names in the book were also associated with the patriarchal period. ... Though it cannot be stated with certainty, possibly Job lived in Jacob's time or shortly thereafter.

# Refining a Creation for Eternity

## The Third Economy

### Life in the New World

How to approach God – The example of Job (cont.)

Job is the only example recorded of a righteous man during the dispensation of human government. Evidence suggests that Job may have been a contemporary of Abram so this event takes place just prior or just after the call of Abram, the point God focuses on only one nation to workout His plan. It's interesting that the line of the promised messiah slid into idolatry and God delivered Abram, having been raised in a polytheistic cult (Josh 24:2), while there were still people such as Job, who knew and worshiped the one true God.

# Refining a Creation for Eternity

## The Third Economy

### Life in the New World

How to approach God – The example of Job (cont.)

The character of Job:

Blameless (1:1)

Upright (1:1)

In fear of God (1:1)

Turning away from evil (1:1)

Continually offering burnt offerings on behalf of his children (1:5)

Fully recognized God's sovereignty (1:21; 2:10)

Holds fast his integrity (2:3)

Confident in the next life (3:11-26)

Assured that God is righteous and just (13:15-16)

Faith in the Redeemer who will stand on earth (19:25)

The ultimate knowledge of humility (42:5-6)

# Refining a Creation for Eternity

## The Third Economy

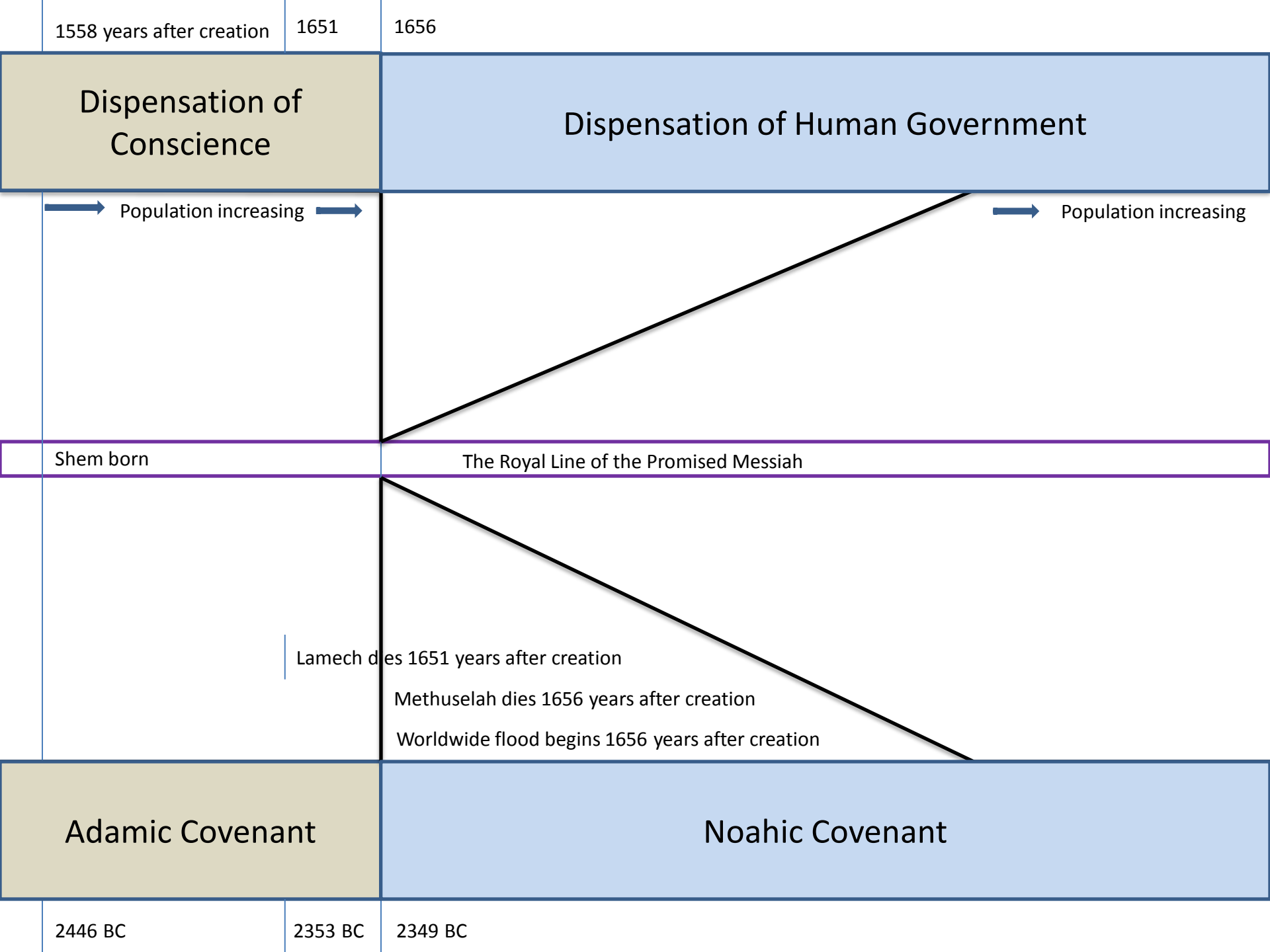
### Life in the New World

How to approach God – The example of Job (cont.)

How did Job approach God?

#### **Job 1:5**

When the days of feasting had completed their cycle, Job would send and consecrate them, rising up early in the morning and offering burnt offerings according to the number of them all; for Job said, “Perhaps my sons have sinned and cursed God in their hearts.” Thus Job did continually.



1558 years after creation

1651

1656

Dispensation of  
Conscience

Dispensation of Human Government

Population increasing

Population increasing

Shem born

The Royal Line of the Promised Messiah

Lamech dies 1651 years after creation

Methuselah dies 1656 years after creation

Worldwide flood begins 1656 years after creation

Adamic Covenant

Noachic Covenant

2446 BC

2353 BC

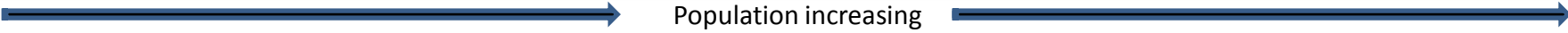
2349 BC



1658 years after creation

## Dispensation of Human Government

Population increasing



Arpachshad born

The Royal Line of the Promised Messiah

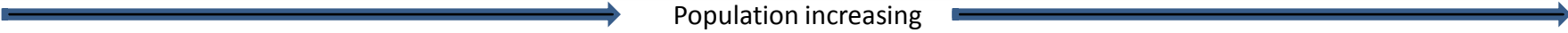
## Noahic Covenant

2346 BC

1693 years after creation

## Dispensation of Human Government

Population increasing



Shelah born

The Royal Line of the Promised Messiah

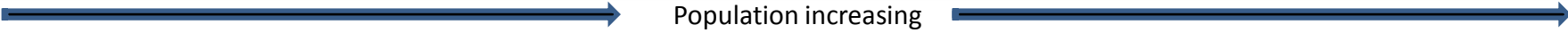
## Noahic Covenant

2311 BC

1723 years after creation

## Dispensation of Human Government

Population increasing



Eber born

The Royal Line of the Promised Messiah

## Noahic Covenant

2281 BC

1757 years after creation

1762

## Dispensation of Human Government

Population increasing

Tower of Babel judgment (Ussher)

Peleg born

The Royal Line of the Promised Messiah

## Noahic Covenant

2247 BC

2242 BC

1787 years after creation

1816

## Dispensation of Human Government

Population increasing

Mizraim, son of Ham founded Egypt (Ussher)

Reu born

The Royal Line of the Promised Messiah

## Noahic Covenant

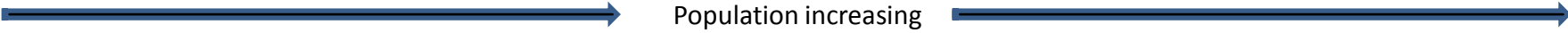
2217 BC

2188 BC

1819 years after creation

## Dispensation of Human Government

Population increasing



Serug born

The Royal Line of the Promised Messiah

## Noahic Covenant

2185 BC

1849 years after creation

## Dispensation of Human Government

Population increasing



Nahor born

The Royal Line of the Promised Messiah

## Noahic Covenant

2155 BC

1878 years after creation

1996

1997

2006

# Dispensation of Human Government

Population increasing

Terah born

The Royal Line of the Promised Messiah

Peleg dies 1996 years after creation

Nahor dies 1997 years after creation

Noah dies 2006 years after creation

# Noahic Covenant

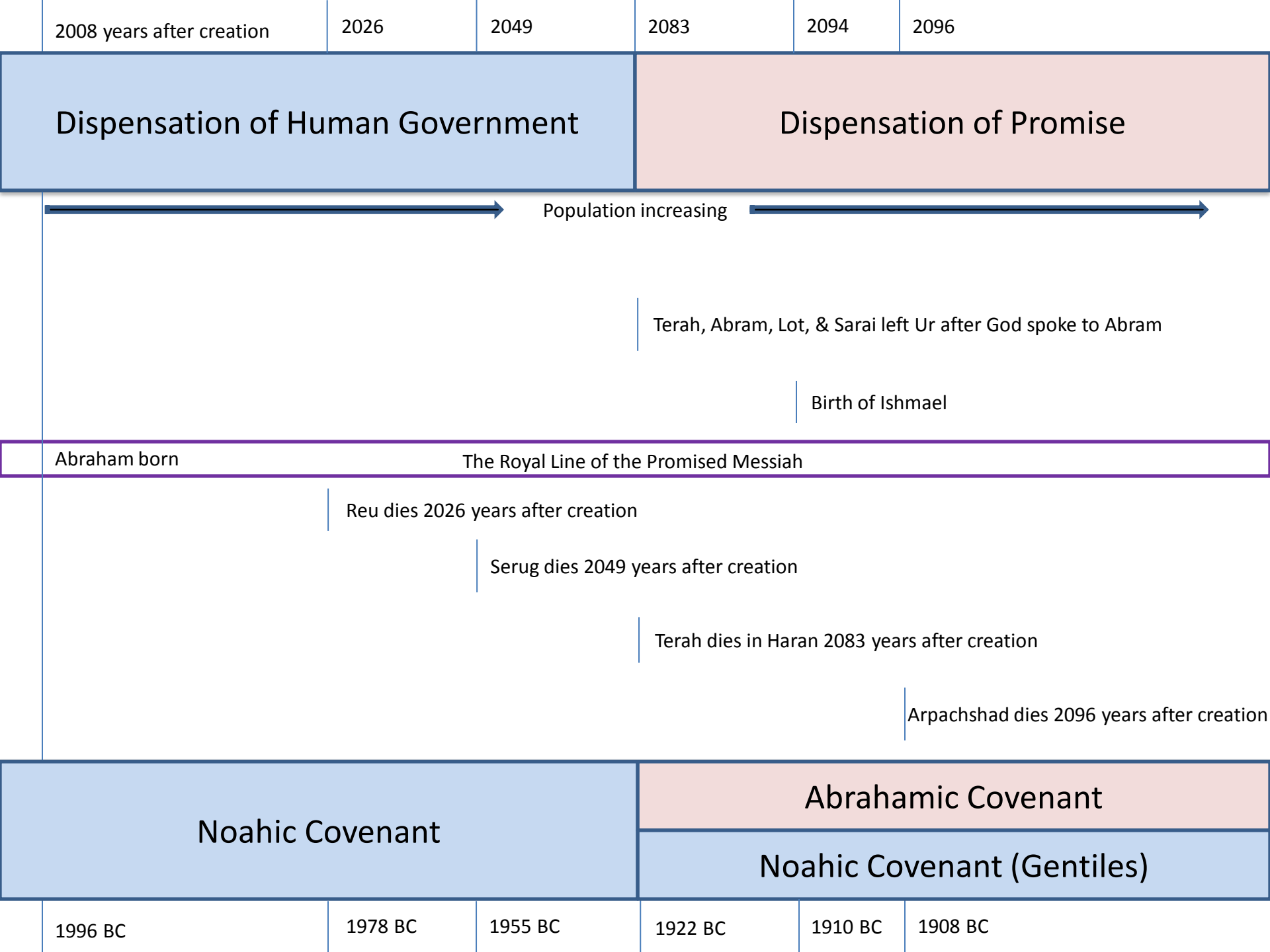
2126 BC

2008 BC

2007 BC

1998 BC





2008 years after creation

2026

2049

2083

2094

2096

Dispensation of Human Government

Dispensation of Promise

Population increasing

Terah, Abram, Lot, & Sarai left Ur after God spoke to Abram

Birth of Ishmael

Abraham born

The Royal Line of the Promised Messiah

Reu dies 2026 years after creation

Serug dies 2049 years after creation

Terah dies in Haran 2083 years after creation

Arpachshad dies 2096 years after creation

Noachic Covenant

Abrahamic Covenant

Noachic Covenant (Gentiles)

1996 BC

1978 BC

1955 BC

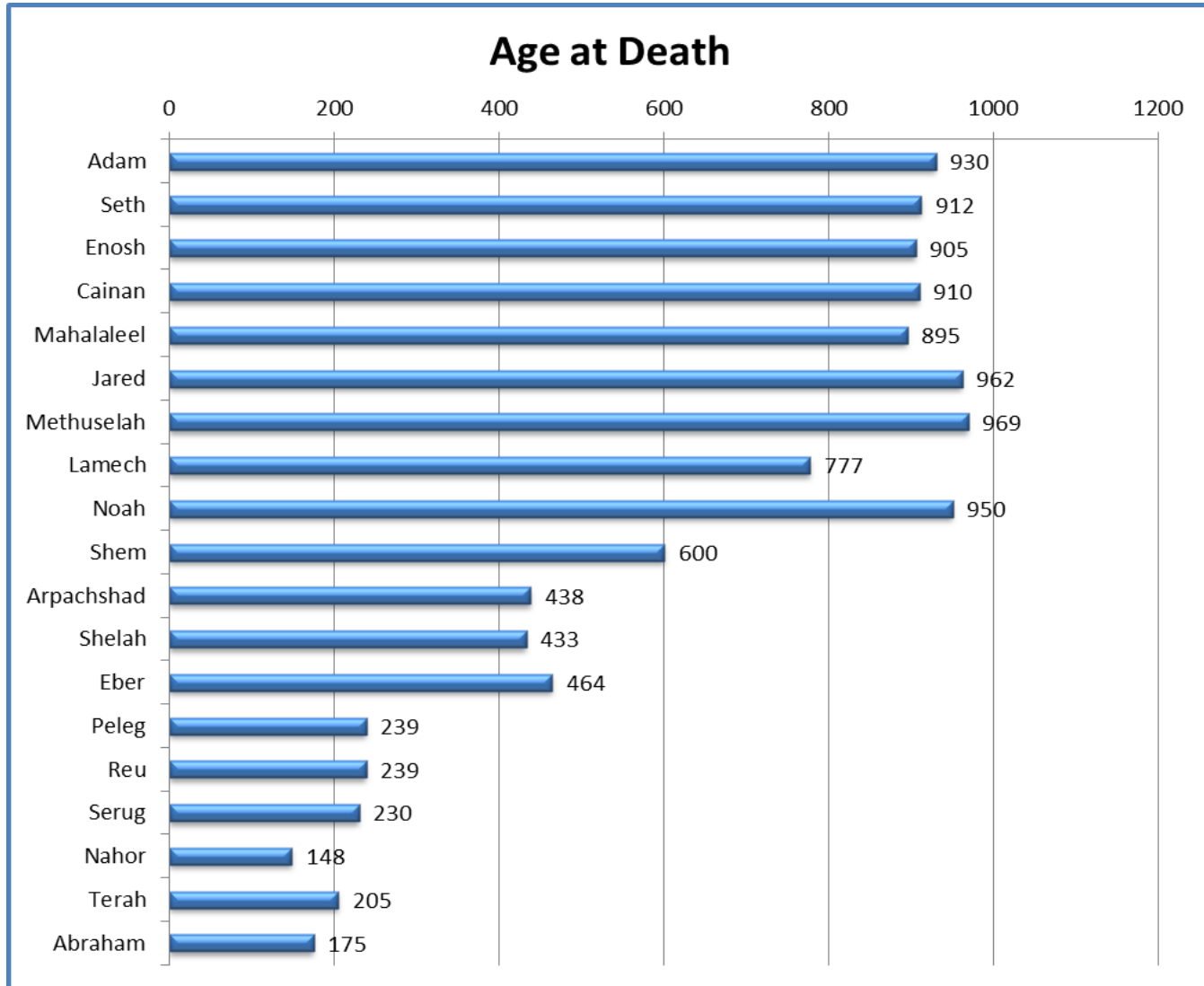
1922 BC

1910 BC

1908 BC

# Refining a Creation for Eternity

## The Third Economy



# Refining a Creation for Eternity



# Refining a Creation for Eternity

## The Third Economy

### Life in Anatolia

Paganism spreads quickly

“The main distinguishing features of the Catalhöyük houses are the wall paintings and bulls head emblems on the walls. These decorations, most of which had cult associations, were not found in a special buildings, but were located in a special area of the houses used for religious purposes... These cult areas or shrines also depict a mother-goddess as a symbol of fertility. Figures of the mother-goddess were not only made of baked clay but also carved from stone.”

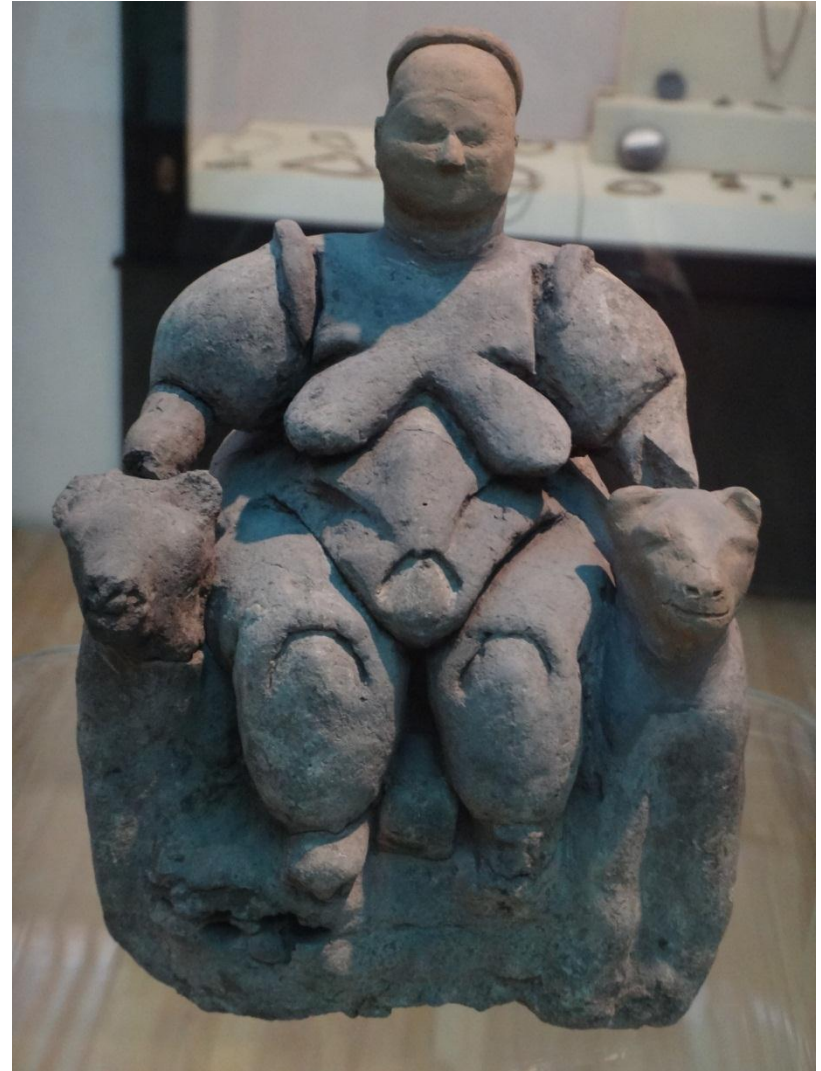
# Refining a Creation for Eternity

## The Third Economy

Life in Anatolia

Paganism spreads quickly

Statuette of the Mother Goddess, terracotta, from Catalhöyük. The Goddess is seated on a throne, flanked by two sacred animals. She is represented as a woman in child-birth.



# Refining a Creation for Eternity

## The Third Economy

Life in Anatolia

Paganism spreads quickly



Allsteadt, E., The museum of anatolian civilizations. Ankara, Turkey

# Refining a Creation for Eternity

## The Third Economy

Life in Anatolia

Paganism spreads quickly



Allsteadt, E., The museum of anatolian civilizations. Ankara, Turkey

# Refining a Creation for Eternity

## The Third Economy

Life in Anatolia

Paganism spreads quickly



Allsteadt, E., The museum of anatolian civilizations. Ankara, Turkey



# Refining a Creation for Eternity

## The Third Economy

Life in Anatolia

Paganism spreads quickly



Allsteadt, E., The museum of anatolian civilizations. Ankara, Turkey

# Refining a Creation for Eternity

## The Third Economy

Life in Anatolia

Paganism spreads quickly



Allsteadt, E., The museum of anatolian civilizations. Ankara, Turkey

# Refining a Creation for Eternity

## The Third Economy

Life in Anatolia

Paganism spreads quickly



Allsteadt, E., The museum of anatolian civilizations. Ankara, Turkey

# Refining a Creation for Eternity

## The Third Economy

### Life in Anatolia

Paganism spreads quickly

According to tradition, Nimrod, the leader of the rebellion at the Tower of Babel (Gen 10:8-9), and his wife Semiramis became the founders of the mystery religion known as the Mother-Child Cult. Their son Tammuz born through an alleged miraculous conception was killed by a wild animal and miraculously raised to life. This event led to the worship of the mother (Semiramis) and the child (Tammuz). When God confounded the languages at Babel consequently ushering in multiple ethnicities (Gen 11:1-9), this Mother-Child Cult was exported into every culture that followed.

# Refining a Creation for Eternity

## The Third Economy

### Life in Anatolia

Paganism spreads quickly

Although the names of the mother and the child were changed from culture to culture, these religions still epitomized the same idolatrous religious system began at Babel. In Assyria, the mother was Ishtar and the child was Tammuz. In Phoenicia, it was Astarte and Baal. In Egypt, it was Isis and Osiris or Horus. In Greece, it was Aphrodite and Eros. In Rome, it was Venus and Cupid. [6] Given the idolatrous origin of these nations, God through Abram began a new nation independent of this universal impact at Babel. This nation, later called Israel (Num 24:17), would become His vehicle of exporting His messianic blessings to the world (Gen 3:15; 12:3).

# Refining a Creation for Eternity

## The Third Economy

Promise of Redemption Maintained

### **Genesis 12:1-3**

Now the LORD said to Abram, “Go forth from your country, And from your relatives And from your father’s house, To the land which I will show you; And I will make you a great nation, And I will bless you, And make your name great; And so you shall be a blessing; And I will bless those who bless you, And the one who curses you I will curse. And in you all the families of the earth will be blessed.”

# Refining a Creation for Eternity

## The Third Economy

### Angelic Conflict

God allows Satan to persecute the faithful that He knows are mature enough to endure the trials. This strengthens the faithful and allows God to show His grace, mercy, and love. God also demonstrates that His righteousness and justice are compatible with His love.

Job 1:6-12; 2:1-7

Zechariah 3:1-7

James 1:2-4; 1:12

# Refining a Creation for Eternity

## The Fourth Economy

