



Certificate of Analysis
Compliance Test

Client Information:

PolyXtracts
1713 E Yellowstone Hwy
Casper, WY 82601

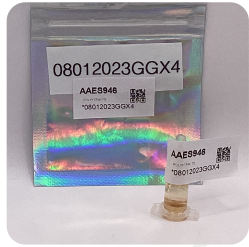
Batch # 08012023GGX4
Batch Date: 2023-08-01
Extracted From: Hemp

Test Reg State: Florida

Order # POL230802-010001
Order Date: 2023-08-02
Sample # AAES946

Sampling Date: 2023-08-08
Lab Batch Date: 2023-08-08
Completion Date: 2023-08-11

Initial Gross Weight: 0.970 g



Potency Tested

Product Image

Delta 8/Delta 10 Potency 13 - (LCUV)
Specimen Weight: 103.110 mg

Tested
SOP13.052 (LCUV)

Analyte	LOD (%)	LOQ (%)	Result (mg/g)	Result (%)	
Delta-10 THC	3.00E-6	0.015	220.400	22.040	
Delta-8 THC	2.60E-5	0.015	213.570	21.357	
Delta6a10a-THC	8.47E-5	0.015	148.920	14.892	
CBC	1.80E-5	0.015	59.490	5.949	
CBN	1.40E-5	0.015	1.440	0.144	
CBD	5.40E-5	0.015	1.250	0.125	
CBDA	1.00E-5	0.015	<LOQ	<LOQ	
CBDV	6.50E-5	0.015	<LOQ	<LOQ	
CBG	2.48E-4	0.015	<LOQ	<LOQ	
CBGA	8.00E-5	0.015	<LOQ	<LOQ	
Delta-9 THC	1.30E-5	0.015	<LOQ	<LOQ	
THCA-A	3.20E-5	0.015	<LOQ	<LOQ	
THCV	7.00E-6	0.015	<LOQ	<LOQ	
Total Active CBD			1.250	0.125	
Total Active THC			<LOQ	<LOQ	

Potency Summary

Total Delta 8 21.357%	Total Delta 10 22.040%
Total Active THC None Detected	Total Active CBD 0.125%
Total CBG None Detected	Total CBN 0.144%
Other Cannabinoids 20.841%	Total Cannabinoids 64.507%

QNS density

Aixia Sun Lab Director/Principal Scientist
D.H.Sc., M.Sc., B.Sc., MT (AAB)



Definitions and Abbreviations used in this report: Total Active CBD = CBD + (CBD-A * 0.877), *Total CBDV = CBDV + (CBDVA * 0.87), Total Active THC = THCA-A * 0.877 + Delta 9 THC, Total THC = THC + (THCV + (THCVA * 0.87)), CBG Total = (CBGA * 0.877) + CBG, CBN Total = (CBNA * 0.877) + CBN, Total CBC = CBC + (CBCA * 0.877), Total THC-O-Acetate = Delta 8 THC-O-Acetate + Delta 9 THC-O-Acetate, Total THCP = Delta8-THCP + Delta9-THCP, Other Cannabinoids Total = Total Cannabinoids - All the listed cannabinoids on the summary section, Total Detected Cannabinoids = Delta6a10a-THC + Delta8-THC + Total CBN + CBT + CBE + Delta8-THCV + Total CBG + Total CBD + Total THC + CBL + Total THC + Total CBC + Total CBDV + Delta10-THC + Total THC-O-Acetate + Total THCP. (mg/ml) = Milligrams per Milliliter, LOQ = Limit of Quantitation, LOD = Limit of Detection, Dilution = Dilution Factor (ppb) = Parts per Billion, (%) = Percent, (cfu/g) = Colony Forming Unit per Gram (cfu/g) = Colony Forming Unit per Gram, LOD = Limit of Detection, (µg/g) = Microgram per Gram (ppm) = Parts per Million, (ppm) = (µg/g), (aw) = Water Activity, (mg/Kg) = Milligram per Kilogram, ACS uses simple acceptance criteria. Passed - Analyte/microbe is not detected or is at the level below the action limit per FL rule 64ER20-39, 5K-4.036, 5K-4.034. Failed - Analyte/microbe is at the level that equal or above the action limit per FL rule 64ER20-39, 5K-4.036, 5K-4.034 Sample not received via laboratory sampling.

This report shall not be reproduced, without written approval, from ACS Laboratory. The results of this report relate only to the material or product analyzed. Test results are confidential unless explicitly waived otherwise. ACS Laboratory is accredited to the ISO/IEC 17025:2017 Standard.