

Sample 656-102023-038

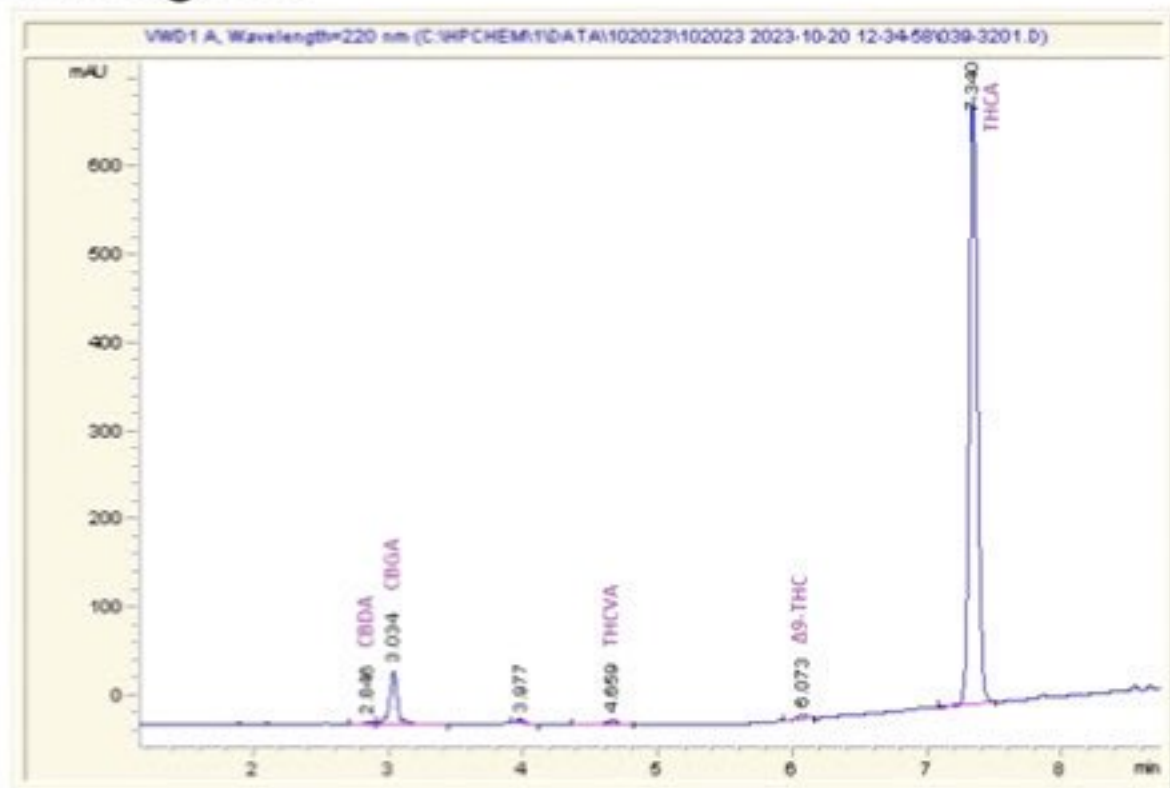
Jungle Juice

Sample Submitted: 10-20-2023; Report Date: 10-25-2023

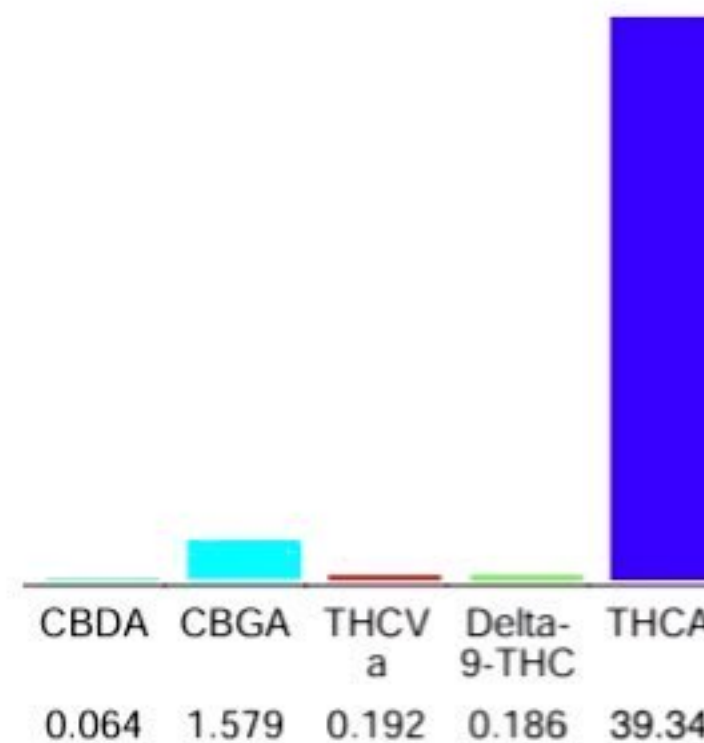
Jungle Juice

Plant Material: Hemp Flower

Chromatogram



Cannabinoid Profile



Cannabinoid Profile by HPLC

0.19%
Delta-9-THC

0.00%
CBD

41.36%
Total Cannabinoids

| Cannabinoid | % wt | mg/g |
|-----------------------------|--------------|---------------|
| CBDA | 0.064 | 0.64 |
| CBGA | 1.579 | 15.79 |
| THCVa | 0.192 | 1.92 |
| Delta-9-THC | 0.186 | 1.86 |
| THCA | 39.34 | 393.40 |
| Total Cannabinoids | 41.36 | 413.6 |
| Calculated Total THC | 34.69 | 346.90 |
| Calculated CBD Yield | 0.06 | 0.56 |

Calculated Total THC = Delta-9-THC + 0.877 * THCA
 Calculated Maximum CBD Yield = CBD + 0.877 * CBDA

Marin Analytics, LLC
 250 Bel Marin Keys Blvd, Suite D4
 Novato, CA 94949
 833-321-TEST / info@marinanalytics.com

Mike Clemmons
 Lab Manager

This sample has been tested by Marin Analytics, LLC using valid testing methodologies and a quality system. Values reported relate only to the sample tested. Marin Analytics, LLC makes no claims as to the efficacy, safety, or other risks associated with any detected or non-detected levels of any compounds reported herein. This Certificate shall not be reproduced except in full without the written approval of Marin Analytics, LLC. Copyright 2023 Marin Analytics, LLC All Rights Reserved.

Sample 656-100523-020

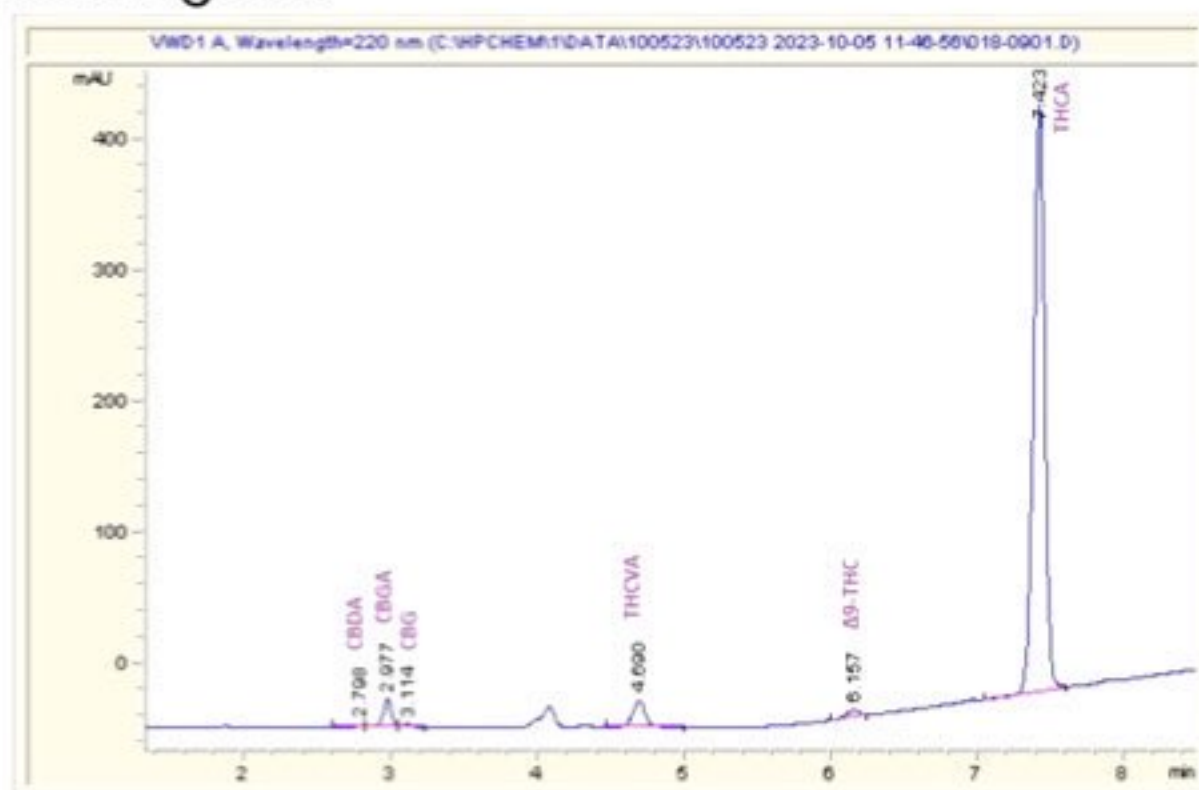
Oreoz (THCA Hemp)

Sample Submitted: 10-05-2023; Report Date: 10-10-2023

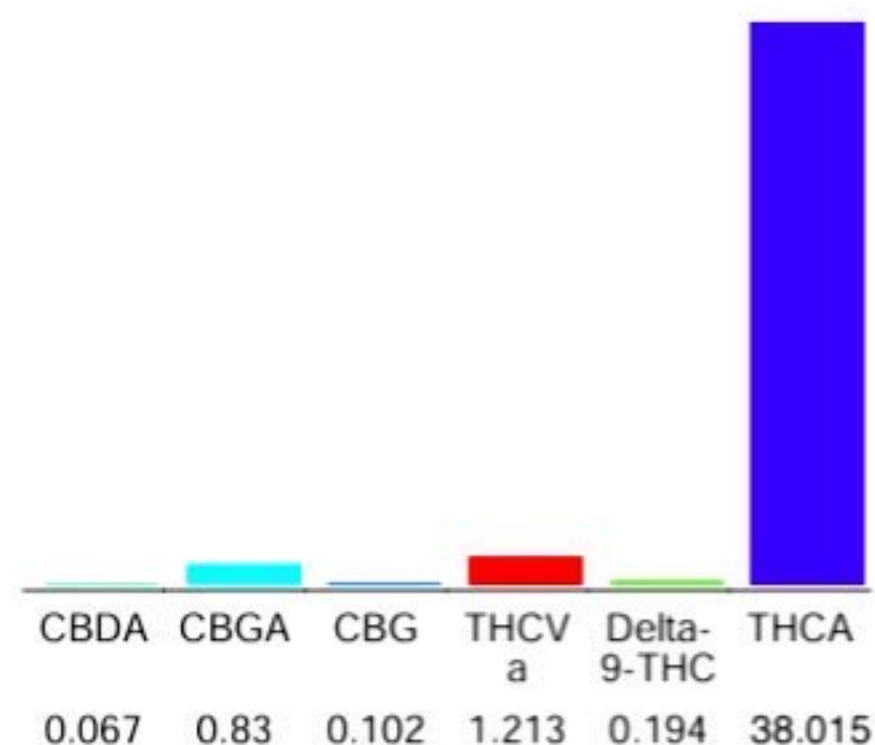
Oreoz (THCA Hemp)

Plant Material: Flower

Chromatogram



Cannabinoid Profile



Cannabinoid Profile by HPLC

0.19%
Delta-9-THC

0.00%
CBD

40.42%
Total Cannabinoids

| Cannabinoid | % wt | mg/g |
|-----------------------------|--------------|---------------|
| CBDA | 0.067 | 0.67 |
| CBGA | 0.83 | 8.3 |
| CBG | 0.102 | 1.02 |
| THCVa | 1.213 | 12.13 |
| Delta-9-THC | 0.194 | 1.94 |
| THCA | 38.02 | 380.20 |
| Total Cannabinoids | 40.42 | 404.2 |
| Calculated Total THC | 33.54 | 335.40 |
| Calculated CBD Yield | 0.06 | 0.59 |

Calculated Total THC = Delta-9-THC + 0.877 * THCA
Calculated Maximum CBD Yield = CBD + 0.877 * CBDA

Marin Analytics, LLC
250 Bel Marin Keys Blvd, Suite D4
Novato, CA 94949
833-321-TEST / info@marinanalytics.com

Sara Biancalana
Chief Scientist

This sample has been tested by Marin Analytics, LLC using valid testing methodologies and a quality system. Values reported relate only to the sample tested. Marin Analytics, LLC makes no claims as to the efficacy, safety, or other risks associated with any detected or non-detected levels of any compounds reported herein. This Certificate shall not be reproduced except in full without the written approval of Marin Analytics, LLC. Copyright 2023 Marin Analytics, LLC All Rights Reserved.



Sample 656-101823-035

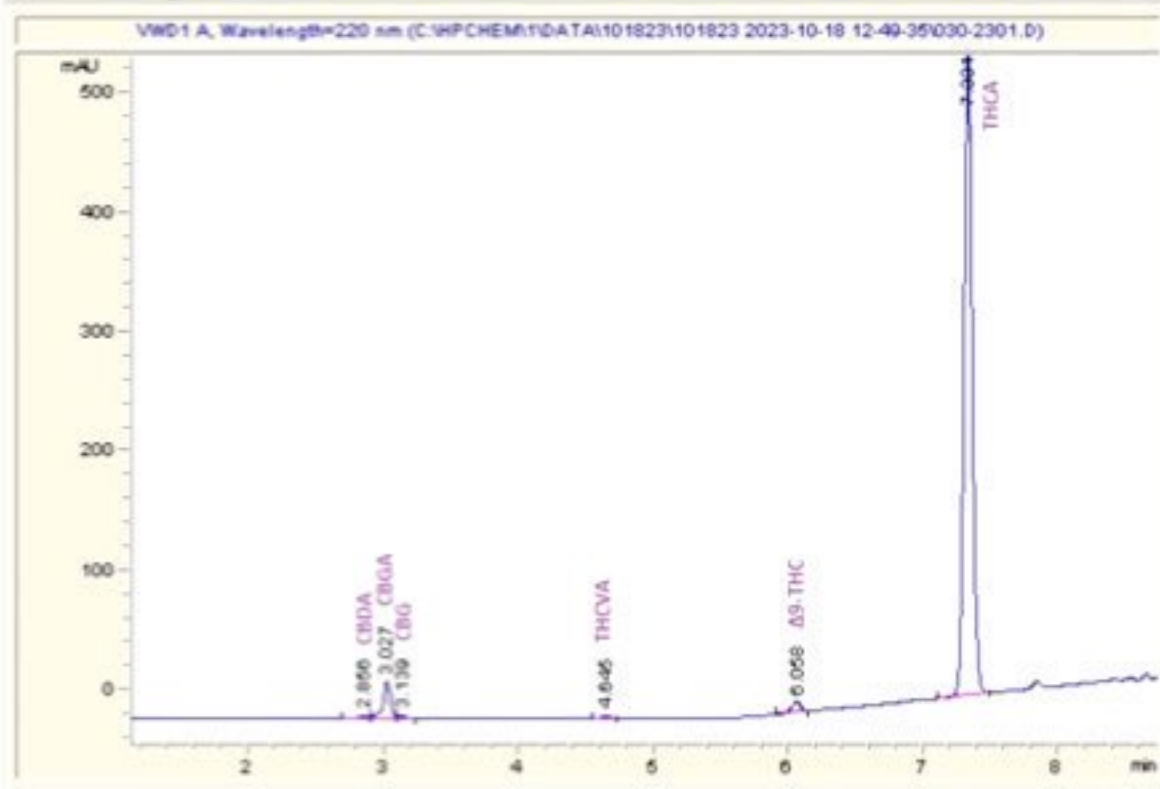
Ridgeline Runtz

Sample Submitted: 10-18-2023; Report Date: 10-18-2023

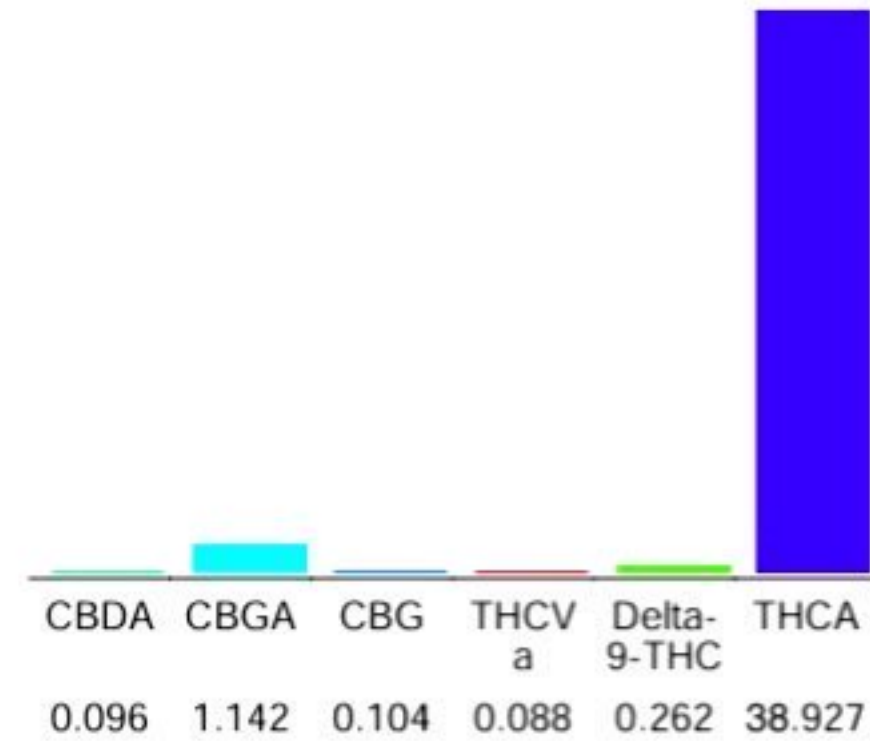
Ridgeline Runtz

Plant Material: Hemp Flower

Chromatogram



Cannabinoid Profile



Cannabinoid Profile by HPLC

0.26%
Delta-9-THC

0.00%
CBD

40.62%
Total Cannabinoids

| Cannabinoid | % wt | mg/g |
|-----------------------------|--------------|---------------|
| CBDA | 0.096 | 0.96 |
| CBGA | 1.142 | 11.42 |
| CBG | 0.104 | 1.04 |
| THCVa | 0.088 | 0.88 |
| Delta-9-THC | 0.262 | 2.62 |
| THCA | 38.93 | 389.27 |
| Total Cannabinoids | 40.62 | 406.2 |
| Calculated Total THC | 34.40 | 344.04 |
| Calculated CBD Yield | 0.08 | 0.84 |

Calculated Total THC = Delta-9-THC + 0.877 * THCA
Calculated Maximum CBD Yield = CBD + 0.877 * CBDA

Marin Analytics, LLC
250 Bel Marin Keys Blvd, Suite D4
Novato, CA 94949
833-321-TEST / info@marinanalytics.com

Mike Clemmons
Lab Manager

This sample has been tested by Marin Analytics, LLC using valid testing methodologies and a quality system. Values reported relate only to the sample tested. Marin Analytics, LLC makes no claims as to the efficacy, safety, or other risks associated with any detected or non-detected levels of any compounds reported herein. This Certificate shall not be reproduced except in full without the written approval of Marin Analytics, LLC. Copyright 2023 Marin Analytics, LLC All Rights Reserved.

Sample 656-101123-023

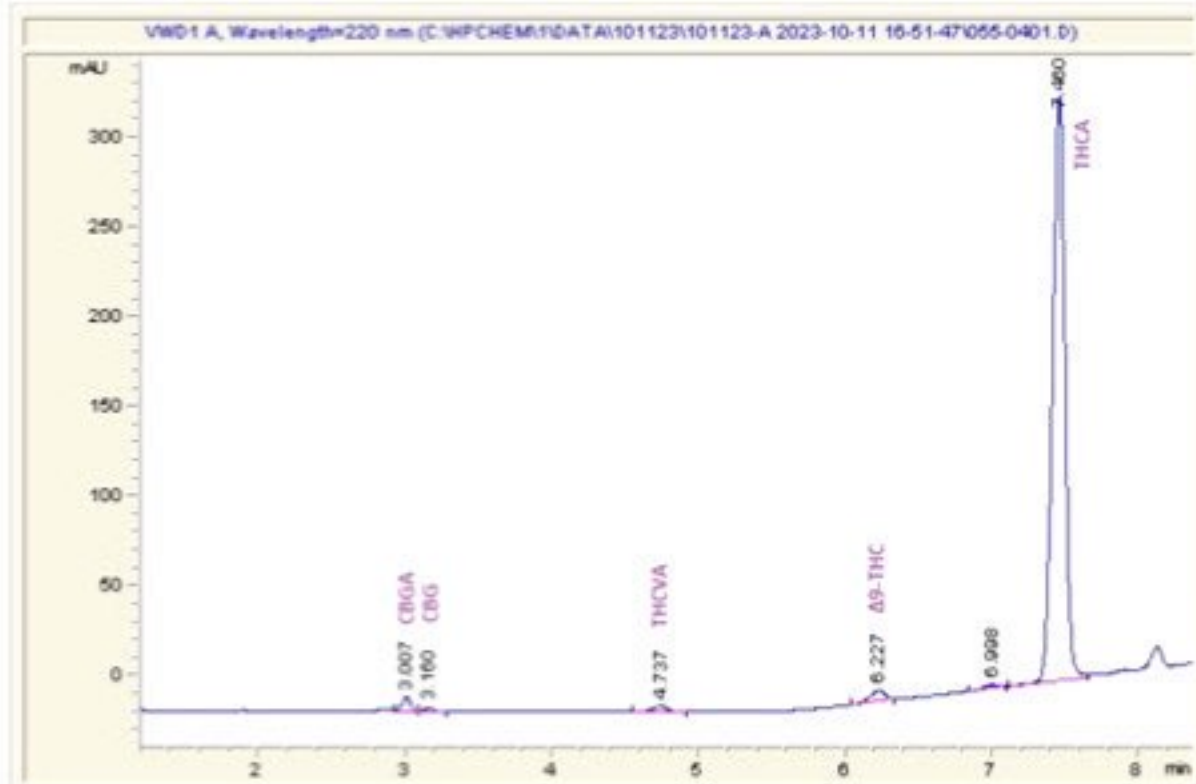
Gorilla Skunk (THCA Hemp)

Sample Submitted: 10-11-2023; Report Date: 10-13-2023

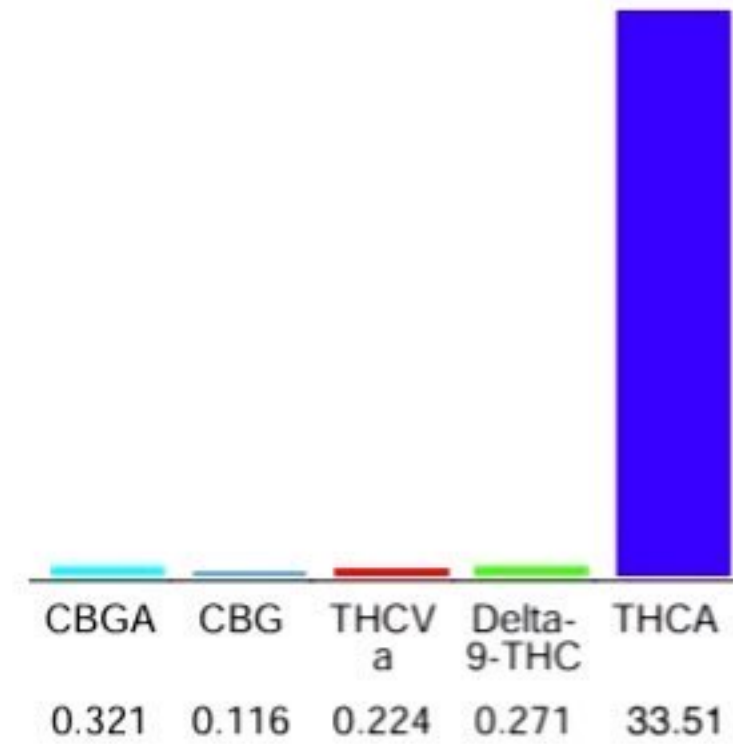
Gorilla Skunk (THCA Hemp)

Plant Material: Flower

Chromatogram



Cannabinoid Profile



Cannabinoid Profile by HPLC

0.27%
Delta-9-THC

0.00%
CBD

34.44%
Total Cannabinoids

| Cannabinoid | % wt | mg/g |
|-----------------------------|--------------|---------------|
| CBGA | 0.321 | 3.21 |
| CBG | 0.116 | 1.16 |
| THCVa | 0.224 | 2.24 |
| Delta-9-THC | 0.271 | 2.71 |
| THCA | 33.51 | 335.1 |
| Total Cannabinoids | 34.44 | 344.4 |
| Calculated Total THC | 29.66 | 296.60 |
| Calculated CBD Yield | 0.00 | 0.00 |

Calculated Total THC = Delta-9-THC + 0.877 * THCA
 Calculated Maximum CBD Yield = CBD + 0.877 * CBDA

Marin Analytics, LLC
 250 Bel Marin Keys Blvd, Suite D4
 Novato, CA 94949
 833-321-TEST / info@marinanalytics.com

Sara Biancalana
 Chief Scientist

This sample has been tested by Marin Analytics, LLC using valid testing methodologies and a quality system. Values reported relate only to the sample tested. Marin Analytics, LLC makes no claims as to the efficacy, safety, or other risks associated with any detected or non-detected levels of any compounds reported herein. This Certificate shall not be reproduced except in full without the written approval of Marin Analytics, LLC. Copyright 2023 Marin Analytics, LLC All Rights Reserved.



Sample 656-101823-033

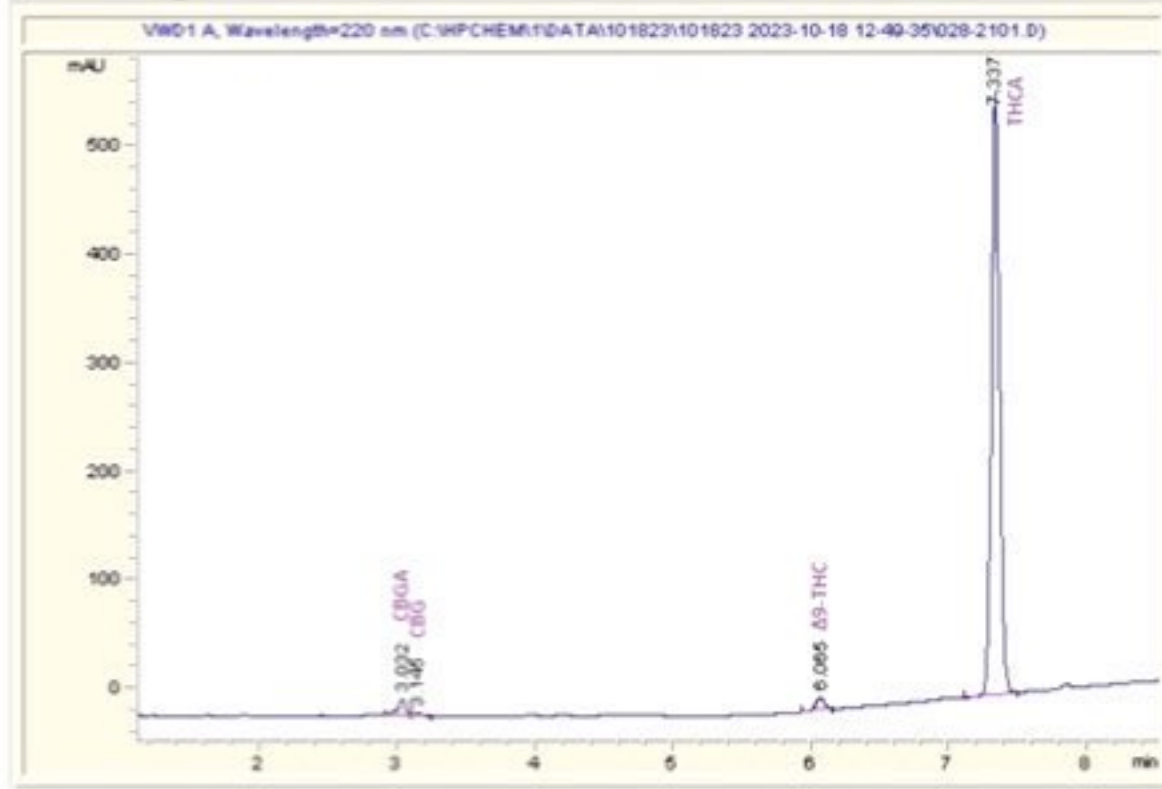
Obama Runtz

Sample Submitted: 10-18-2023; Report Date: 10-23-2023

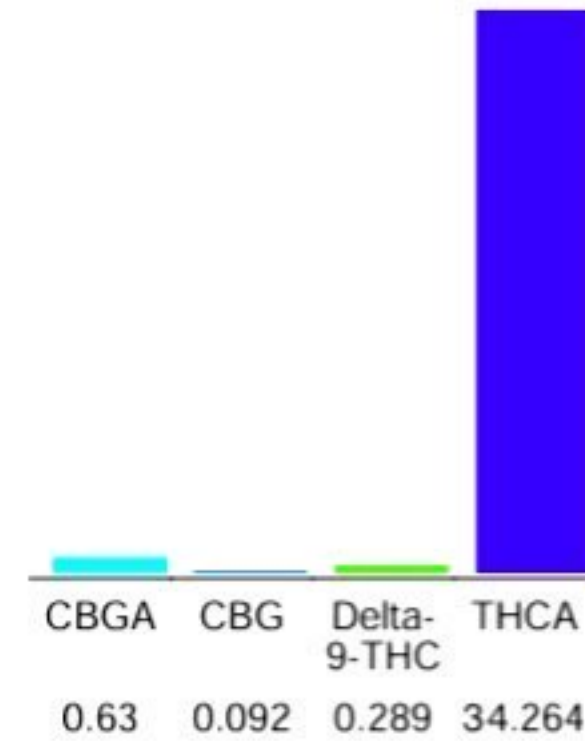
Obama Runtz

Plant Material: Hemp Flower

Chromatogram



Cannabinoid Profile



Cannabinoid Profile by HPLC

0.29%
Delta-9-THC

0.00%
CBD

35.27%
Total Cannabinoids

| Cannabinoid | % wt | mg/g |
|-----------------------------|--------------|---------------|
| CBGA | 0.63 | 6.3 |
| CBG | 0.092 | 0.92 |
| Delta-9-THC | 0.289 | 2.89 |
| THCA | 34.26 | 342.60 |
| Total Cannabinoids | 35.27 | 352.7 |
| Calculated Total THC | 21.57 | 215.69 |
| Calculated CBD Yield | 0.00 | 0.00 |

Calculated Total THC = Delta-9-THC + 0.877 * THCA
Calculated Maximum CBD Yield = CBD + 0.877 * CBDA

Marin Analytics, LLC
250 Bel Marin Keys Blvd, Suite D4
Novato, CA 94949
833-321-TEST / info@marinanalytics.com

Mike Clemmons
Lab Manager

This sample has been tested by Marin Analytics, LLC using valid testing methodologies and a quality system. Values reported relate only to the sample tested. Marin Analytics, LLC makes no claims as to the efficacy, safety, or other risks associated with any detected or non-detected levels of any compounds reported herein. This Certificate shall not be reproduced except in full without the written approval of Marin Analytics, LLC. Copyright 2023 Marin Analytics, LLC All Rights Reserved.

Potency Results

Sample Name: *Jack Herrer*

Client:

Client Batch ID:

Pinnacle-Analytics.com
 3549 Lear Way, Suite 101
 Medford OR 97504
 P:(541)300-8217

Sample ID:

Matrix: Flower

Prep Analyst: Jeff A.

Analysis Method: 0630322+1 H3 4-20-2022 #1.lcm

Sampling Method: N/A

Reference Method: JCB 2009: HPLC/DAD

Analysis Batch: 9-12-2023 H3 48, 101, 109, 185, 205, 276, 370, 382 Flowe

Date Sampled: 9/8/2023

Date Reported: 9/12/2023

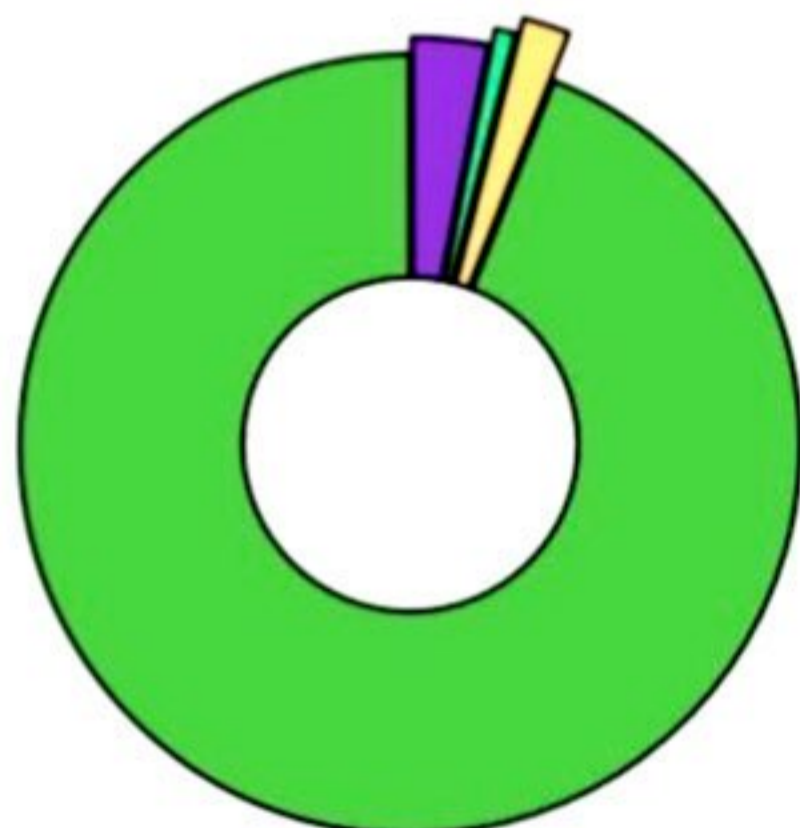
Client License:

Total THC (THCA*0.877+d9-THC) **26.63%**
Total CBD (CBDA*0.877+CBD) **<LOQ%**
Moisture Content **6.74%**

| Cannabinoid | % Weight | mg/g |
|---------------------------|--------------|--------------|
| CBDVA | <LOQ | <LOQ |
| CBDV | <LOQ | <LOQ |
| CBDA* | <LOQ | <LOQ |
| CBGA | 0.71 | 7.1 |
| CBG | 0.388 | 1.88 |
| CBD* | <LOQ | <LOQ |
| THCV | <LOQ | <LOQ |
| CBN | <LOQ | <LOQ |
| d9-THC* | 0.235 | 4.35 |
| d8-THC* | <LOQ | <LOQ |
| CBC | <LOQ | <LOQ |
| THCA* | 30.1 | 301.0 |
| Total Cannabinoids | 31.43 | 314.3 |

*ORELAP Accredited Analyte

Limit Of Quantitation: 0.1%, analyte not measured



■ CBGA ■ THCA*
■ CBG
■ d9-THC*



These test results may not be altered or reproduced except in full without the permission of Pinnacle Analytics. These results were generated following the Oregon Administrative Rules and in accordance with the NELAP Institute under ORELAP License #4152
 Report generated by Bourne Potency Rev. 13-8-1-2023


 Kris Ford, PhD
 Lab Director



PINNACLE — ANALYTICS —

Quality Control Results

Analyst: Jeff A.

Analysis Batch: 9-12-2023 H3 48, 101, 109, 185, 205, 276, 370, 382FF (541)

Pinnacle-Analytics.com
3549 Lear Way, Suite 101
Medford OR 97504
Tel: (541) 300-8217

| | Duplicate RPD | | LCS % Recovery | | Method Blank | |
|---------------|---------------|-------|----------------|---------|--------------|-------|
| | H-0-D1408-b | Limit | C-FL-091223 | Limits | C-FB-091223 | Limit |
| CBDA | 4.81% | 30% | 97.9% | 90-110% | <LOQ/2 | LOQ/2 |
| CBD | 9.57% | 30% | 102.0% | 90-110% | <LOQ/2 | LOQ/2 |
| d9-THC | 2.62% | 10% | 102.0% | 90-110% | <LOQ/2 | LOQ/2 |
| d8-THC | 5.13% | 30% | 103.0% | 90-110% | <LOQ/2 | LOQ/2 |
| THCA | 1.66% | 10% | 92.9% | 90-110% | <LOQ/2 | LOQ/2 |

RPD: Relative Percent Difference between unknown sample and its duplicate
LCS: Laboratory Control Sample with known concentration
Case Comments: There were no divergences from ordinary Quality Control procedures or SOPs.



These test results may not be altered or reproduced except in full without the permission of Pinnacle Analytics. These results were generated following the Oregon Administrative Rules and in accordance with the NELAP Institute under ORELAP License #4152
Report generated by Routine Potency Rev 13 8-1-2023

Kris Ford, PhD
Lab Director





PINNACLE — ANALYTICS —

Potency Results

Sample Name: *Gelato 41*

Client:

Client Batch ID:

Pinnacle-Analytics.com
3549 Lear Way, Suite 101
Medford OR 97504
P:(541)300-8217

Sample ID:

Matrix: Flower

Prep Analyst: Jeff A.

Analysis Method: 0630322+1 H4 4-21-2022 #1.lcm

Sampling Method: N/A

Reference Method: JCB 2009: HPLC/DAD

Analysis Batch: 9-10-2023 H4 14, 109, 185, 276, 310, 355 Flower

Date Sampled: 9/8/2023

Date Reported: 9/11/2023

Client License:

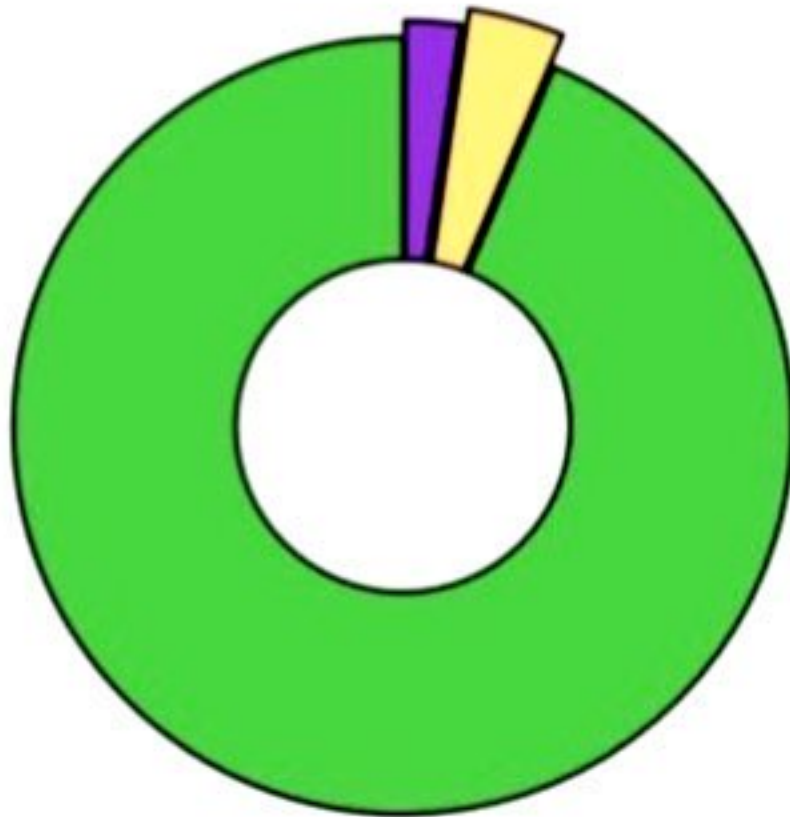
Ashland OR 97520

For R&D Purposes Only

| | |
|--------------------------------------|--------|
| Total THC (THCA*0.877+d9-THC) | 28.52% |
| Total CBD (CBDA*0.877+CBD) | <LOQ% |
| Moisture Content | 13.0% |

| Cannabinoid | % Weight | mg/g |
|---------------------------|--------------|--------------|
| CBDVA | <LOQ | <LOQ |
| CBDV | <LOQ | <LOQ |
| CBDA* | <LOQ | <LOQ |
| CBGA | 0.404 | 4.04 |
| CBG | <LOQ | <LOQ |
| CBD* | <LOQ | <LOQ |
| THCV | <LOQ | <LOQ |
| CBN | <LOQ | <LOQ |
| d9-THC* | 0.193 | 1.93 |
| d8-THC* | <LOQ | <LOQ |
| CBC | <LOQ | <LOQ |
| THCA* | 32.3 | 323.0 |
| Total Cannabinoids | 32.90 | 329.0 |

*ORELAP Accredited Analyte
Limit Of Quantitation: 0.1%, analyte not measured



- CBGA
- d9-THC*
- THCA*



These test results may not be altered or reproduced except in full without the permission of Pinnacle Analytics. These results were generated following the Oregon Administrative Rules and in accordance with the NELAP Institute under ORELAP License #4152
Report generated by Potina Potency Rev 3_8-1-2023

Kris Ford, PhD
Lab Director



PINNACLE ANALYTICS

Quality Control Results

Analyst: Jeff A.

Pinnacle-Analytics.com
3549 Lear Way, Suite 101
Medford OR 97504

Analysis Batch: 9-10-2023 H4 14, 109, 185, 276, 310, 355 Flower P:(541)300-8217

| | Duplicate RPD | | LCS % Recovery | | Method Blank | |
|---------------|---------------|-------|----------------|---------|--------------|-------|
| | C-0-D233-g | Limit | C-FL-090723 | Limits | C-FB-090723 | Limit |
| CBDA | 1.35% | 10% | 97.9% | 90-110% | <LOQ/2 | LOQ/2 |
| CBD | 0.348% | 10% | 102.0% | 90-110% | <LOQ/2 | LOQ/2 |
| d9-THC | 0.572% | 10% | 102.0% | 90-110% | <LOQ/2 | LOQ/2 |
| d8-THC | 9.58% | 10% | 103.0% | 90-110% | <LOQ/2 | LOQ/2 |
| THCA | 2.54% | 10% | 92.9% | 90-110% | <LOQ/2 | LOQ/2 |

RPD: Relative Percent Difference between unknown sample and its duplicate

LCS: Laboratory Control Sample with known concentration

Case Comments: There were no divergences from ordinary Quality Control procedures or SOPs.



These test results may not be altered or reproduced except in full without the permission of Pinnacle Analytics. These results were generated following the Oregon Administrative Rules and in accordance with the NELAP Institute under ORELAP License #4152
Report generated by Routine Potency Rev 13 18-1-2023

Kris Ford, PhD
Lab Director



PINNACLE — ANALYTICS —

Potency Results

Sample Name: *Gush Mintz*
Client:
Client Batch ID:

Pinnacle-Analytics.com
3549 Lear Way, Suite 101
Medford OR 97504
P:(541)300-8217

Sample ID:
Matrix: Flower
Prep Analyst: Megan E.
Analysis Method: 0630322+1 H3 4-20-2022 #1.lcm
Sampling Method: N/A
Reference Method: JCB 2009: HPLC/DAD
Analysis Batch: 7-17-2023 H3 22, 109, 302, 370 Flower

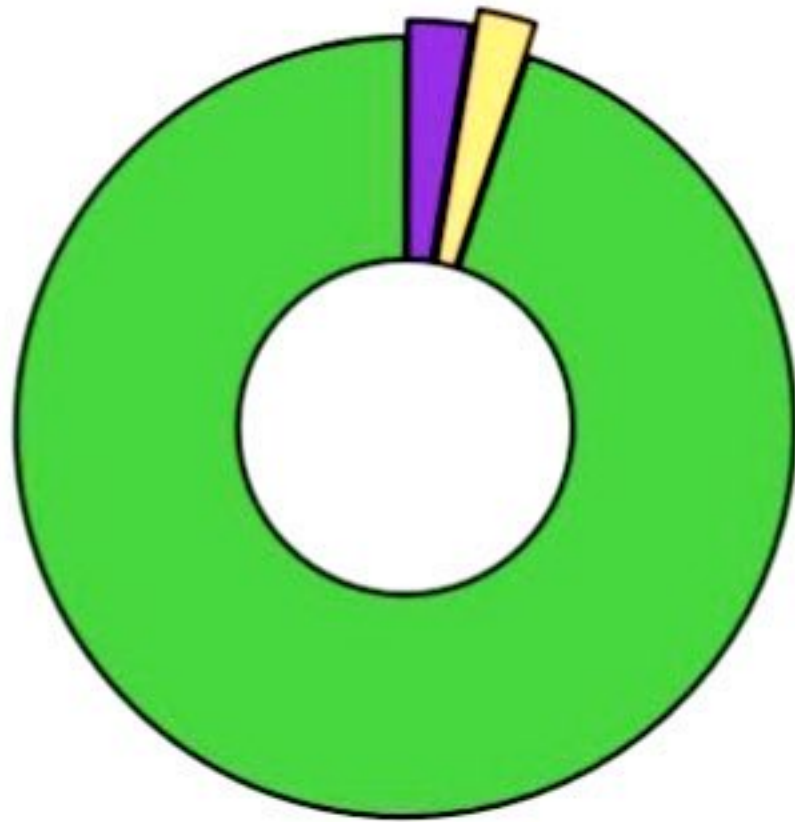
Date Sampled: 7/14/2023
Date Reported: 7/18/2023
Client License:

For R&D Purposes Only

Total THC (THCA*0.877+d9-THC) 30.66%
Total CBD (CBDA*0.877+CBD) <LOQ%
Moisture Content 11.1%

| Cannabinoid | % Weight | mg/g |
|---------------------------|--------------|--------------|
| CBDVA | <LOQ | <LOQ |
| CBDV | <LOQ | <LOQ |
| CBDA* | <LOQ | <LOQ |
| CBGA | 0.442 | 4.42 |
| CBG | <LOQ | <LOQ |
| CBD* | <LOQ | <LOQ |
| THCV | <LOQ | <LOQ |
| CBN | <LOQ | <LOQ |
| d9-THC* | 0.14 | 1.4 |
| d8-THC* | <LOQ | <LOQ |
| CBC | <LOQ | <LOQ |
| THCA* | 34.8 | 348 |
| Total Cannabinoids | 35.38 | 273.8 |

*ORELAP Accredited Analyte
Limit Of Quantitation: 0.1%, analyte not measured



- CBGA
- d9-THC*
- THCA*



These test results may not be altered or reproduced except in full without the permission of Pinnacle Analytics. These results were generated following the Oregon Administrative Rules and in accordance with the NELAP Institute under ORELAP License #4152
Report generated by Routine Potency Rev 11-4-16-2023

Kris Ford, PhD
Lab Director





PINNACLE — ANALYTICS —

Quality Control Results

Analyst: Megan E.

Analysis Batch: 7-17-2023 H3 22, 109, 302, 370 Flower

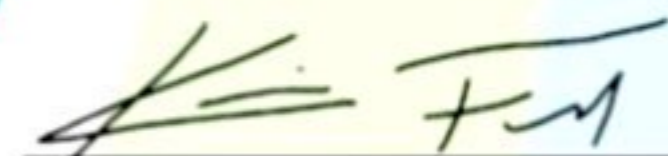
Pinnacle-Analytics.com
3549 Lear Way, Suite 101
Medford OR 97504
P:(541)300-8217

| | Duplicate RPD | | LCS % Recovery | | Method Blank | |
|---------------|---------------|-------|----------------|---------|--------------|-------|
| | H-0-D842-b | Limit | C-FL-071723 | Limits | C-FB-071723 | Limit |
| CBDA | 2.12% | 10% | 103.0% | 90-110% | <LOQ/2 | LOQ/2 |
| CBD | <LOQ% | 30% | 107.0% | 90-110% | <LOQ/2 | LOQ/2 |
| d9-THC | <LOQ% | 30% | 93.4% | 90-110% | <LOQ/2 | LOQ/2 |
| d8-THC | <LOQ% | 30% | 107.0% | 90-110% | <LOQ/2 | LOQ/2 |
| THCA | <LOQ% | 30% | 101.0% | 90-110% | <LOQ/2 | LOQ/2 |

RPD: Relative Percent Difference between unknown sample and its duplicate
LCS: Laboratory Control Sample with known concentration
Case Comments: There were no divergences from ordinary Quality Control procedures or SOPs.



These test results may not be altered or reproduced except in full without the permission of Pinnacle Analytics. These results were generated following the Oregon Administrative Rules and in accordance with the NELAP Institute under ORELAP License #4152
Report generated by Routine_Potency_Rev 11_4-16-2023


Kris Ford, PhD
Lab Director



PINNACLE

— ANALYTICS —

Potency Results

Sample Name: ICC-A

Client:

Client Batch ID:

Pinnacle-Analytics.com
3549 Lear Way, Suite 101
Medford OR 97504
P:(541)300-8217

Sample ID:

Matrix: Flower

Prep Analyst: Megan E.

Analysis Method: 0630322+1 H3 4-20-2022 #1.lcm

Sampling Method: N/A

Reference Method: JCB 2009: HPLC/DAD

Analysis Batch: 7-20-2023 H3 101, 109, 205, 357, 375 Flower

Date Sampled: 7/19/2023

Date Reported: 7/20/2023

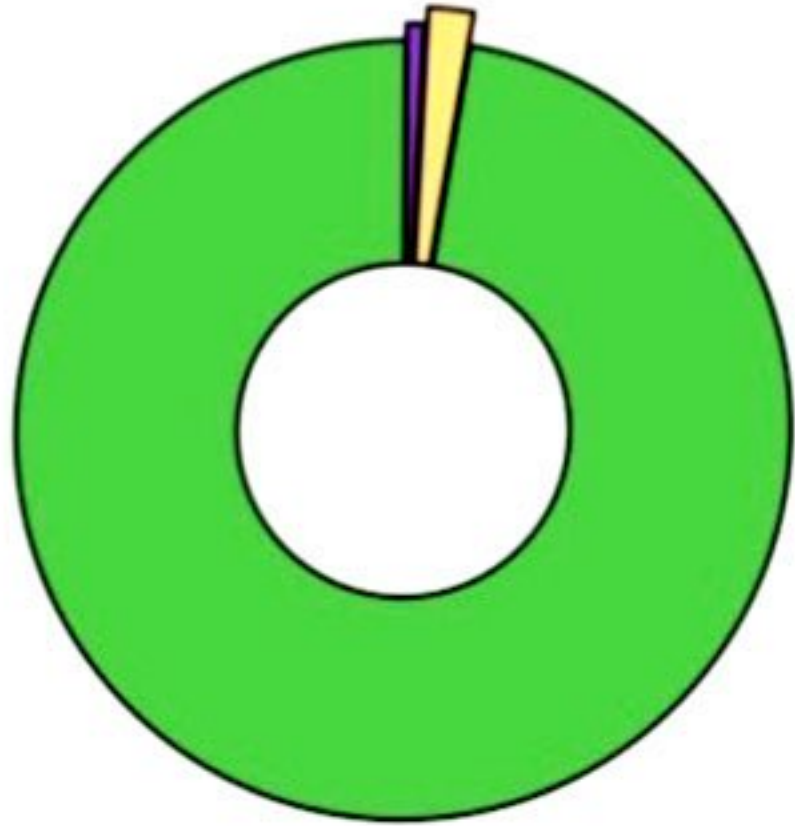
Client License:

For R&D Purposes Only

| | |
|--------------------------------------|--------|
| Total THC (THCA*0.877+d9-THC) | 31.69% |
| Total CBD (CBDA*0.877+CBD) | <LOQ% |
| Moisture Content | 11.7% |

| Cannabinoid | % Weight | mg/g |
|---------------------------|-------------|--------------|
| CBDVA | <LOQ | <LOQ |
| CBDV | <LOQ | <LOQ |
| CBDA* | <LOQ | <LOQ |
| CBGA | 0.261 | 2.61 |
| CBG | <LOQ | <LOQ |
| CBD* | <LOQ | <LOQ |
| THCV | <LOQ | <LOQ |
| CBN | <LOQ | <LOQ |
| d9-THC* | 0.208 | 3.08 |
| d8-THC* | <LOQ | <LOQ |
| CBC | <LOQ | <LOQ |
| THCA* | 35.9 | 359.0 |
| Total Cannabinoids | 36.1 | 361.0 |

*ORELAP Accredited Analyte
Limit Of Quantitation: 0.1%, analyte not measured



- CBGA
- d9-THC*
- THCA*



These test results may not be altered or reproduced except in full without the permission of Pinnacle Analytics. These results were generated following the Oregon Administrative Rules and in accordance with the NELAP Institute under ORELAP License #4152 Report generated by Routine Potency Rev 4-16-2023

Kris Ford, PhD
Lab Director



PINNACLE — ANALYTICS —

Quality Control Results

Analyst: Megan E.

Analysis Batch: 7-20-2023 H3 101, 109, 205, 357, 375 Flower

Pinnacle-Analytics.com
3549 Lear Way, Suite 101
Medford OR 97504
P:(541)300-8217

| | Duplicate RPD | | LCS % Recovery | | Method Blank | |
|---------------|---------------|-------|----------------|---------|--------------|-------|
| | C-0-D233-f | Limit | C-FL-072023 | Limits | C-FB-072023 | Limit |
| CBDA | 1.6% | 10% | 103.0% | 90-110% | <LOQ/2 | LOQ/2 |
| CBD | 0.141% | 10% | 103.0% | 90-110% | <LOQ/2 | LOQ/2 |
| d9-THC | 1.23% | 10% | 96.1% | 90-110% | <LOQ/2 | LOQ/2 |
| d8-THC | 0.824% | 10% | 97.0% | 90-110% | <LOQ/2 | LOQ/2 |
| THCA | 0.397% | 10% | 97.2% | 90-110% | <LOQ/2 | LOQ/2 |

RPD: Relative Percent Difference between unknown sample and its duplicate
LCS: Laboratory Control Sample with known concentration
Case Comments: There were no divergences from ordinary Quality Control procedures or SOPs.



These test results may not be altered or reproduced except in full without the permission of Pinnacle Analytics. These results were generated following the Oregon Administrative Rules and in accordance with the NELAP Institute under ORELAP License #4152
Report generated by Routine Potency_Rev11_4-16-2023

Kris Ford, PhD
Lab Director





PINNACLE — ANALYTICS —

Potency Results

Sample Name: *Gelato Cake*

Client:

Client Batch ID:

Pinnacle-Analytics.com
3549 Lear Way, Suite 101
Medford OR 97504
P:(541)300-8217

Sample ID:

Matrix: Flower

Prep Analyst: Megan E.

Analysis Method: 0630322+1 H3 4-20-2022 #1.lcm

Sampling Method: N/A

Reference Method: JCB 2009: HPLC/DAD

Analysis Batch: 5-17-2023 H3 109, 241, 302, 355, 357 Flower

Date Sampled: 5/16/2023

Date Reported: 5/26/2023

Client License:

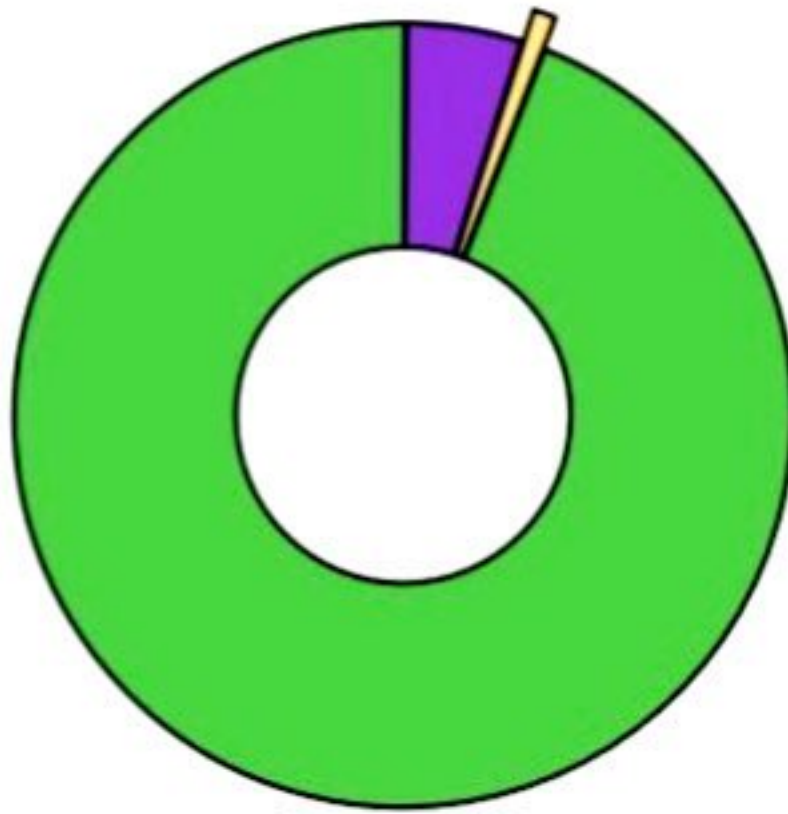
For R&D Purposes Only

Total THC (THCA*0.877+d9-THC) **34.85%**
Total CBD (CBDA*0.877+CBD) **<LOQ%**
Moisture Content **13.0%**

| Cannabinoid | % Weight | mg/g |
|---------------------------|-------------|--------------|
| CBDVA | <LOQ | <LOQ |
| CBDV | <LOQ | <LOQ |
| CBDA* | <LOQ | <LOQ |
| CBGA | 1.52 | 15.2 |
| CBG | <LOQ | <LOQ |
| CBD* | <LOQ | <LOQ |
| THCV | <LOQ | <LOQ |
| CBN | <LOQ | <LOQ |
| d9-THC* | 0.295 | 2.95 |
| d8-THC* | <LOQ | <LOQ |
| CBC | <LOQ | <LOQ |
| THCA* | 39.4 | 394.0 |
| Total Cannabinoids | 41.2 | 412.0 |

*ORELAP Accredited Analyte

Limit Of Quantitation: 0.1%, analyte not measured



- CBGA
- d9-THC*
- THCA*



These test results may not be altered or reproduced except in full without the permission of Pinnacle Analytics. These results were generated following the Oregon Administrative Rules and in accordance with the NELAP Institute under ORELAP License #4152
Report generated by Routine Potency Rev 11-16-2023

Kris Ford, PhD
Lab Director



PINNACLE — ANALYTICS —

Quality Control Results

Analyst: Megan E.

Analysis Batch: 5-17-2023 H3 109, 241, 302, 355, 357 Flower

Pinnacle-Analytics.com
3549 Lear Way, Suite 101
Medford OR 97504
P:(541)300-8217

| | Duplicate RPD | | LCS % Recovery | | Method Blank | |
|---------------|---------------|-------|----------------|---------|--------------|-------|
| | C-0-D565-b | Limit | C-FL-051723 | Limits | C-FB-051723 | Limit |
| CBDA | <LOQ% | 30% | 98.5% | 90-110% | <LOQ/2 | LOQ/2 |
| CBD | <LOQ% | 30% | 101.0% | 90-110% | <LOQ/2 | LOQ/2 |
| d9-THC | 1.96% | 10% | 99.9% | 90-110% | <LOQ/2 | LOQ/2 |
| d8-THC | <LOQ% | 30% | 102.0% | 90-110% | <LOQ/2 | LOQ/2 |
| THCA | 4.15% | 10% | 96.9% | 90-110% | <LOQ/2 | LOQ/2 |

RPD: Relative Percent Difference between unknown sample and its duplicate
LCS: Laboratory Control Sample with known concentration
Case Comments: There were no divergences from ordinary Quality Control procedures or SOPs.



These test results may not be altered or reproduced except in full without the permission of Pinnacle Analytics. These results were generated following the Oregon Administrative Rules and in accordance with the NELAP Institute under ORELAP License #4152
Report generated by Routine_Potency_Rev11_4-16-2023

Kris Ford, PhD
Lab Director



HSP

Sample 627-071423-018

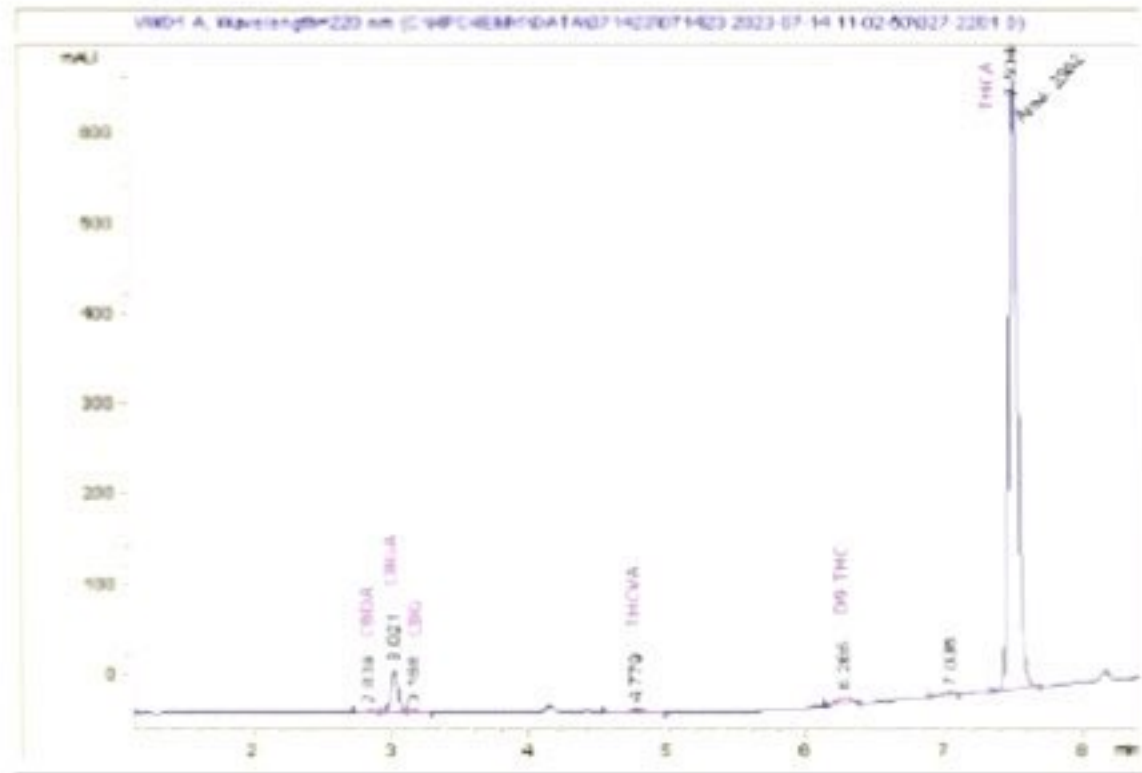
Octane Gas

Sample Submitted: 07-14-2023; Report Date: 07-19-2023

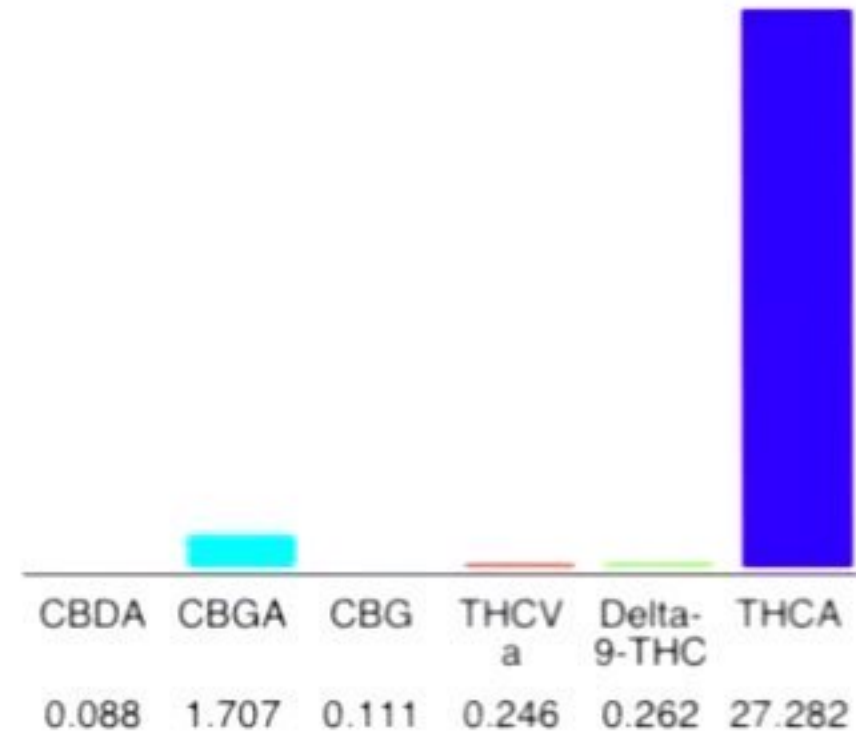
Octane Gas

Plant Material: Flower

Chromatogram



Cannabinoid Profile



Cannabinoid Profile by HPLC

0.26%
Delta-9-THC

0.00%
CBD

29.70%
Total Cannabinoids

| Cannabinoid | % wt | mg/g |
|-----------------------------|--------------|---------------|
| CBDA | 0.088 | 0.88 |
| CBGA | 1.707 | 17.07 |
| CBG | 0.111 | 1.11 |
| THCVa | 0.246 | 2.46 |
| Delta-9-THC | 0.262 | 2.62 |
| THCA | 27.28 | 272.82 |
| Total Cannabinoids | 29.70 | 297.0 |
| Calculated Total THC | 24.19 | 241.88 |
| Calculated CBD Yield | 0.08 | 0.77 |

Calculated Total THC = Delta-9-THC + 0.877 * THCA
 Calculated Maximum CBD Yield = CBD + 0.877 * CBDA

Marin Analytics, LLC
 250 Bel Marin Keys Blvd, Suite D4
 Novato, CA 94949
 833-321-TEST / info@marinanalytics.com

Sara Biancalana
Sara Biancalana
 Chief Scientist

This sample has been tested by Marin Analytics, LLC using valid testing methodologies and a quality system. Values reported relate only to the sample tested. Marin Analytics, LLC makes no claims as to the efficacy, safety, or other risks associated with any detected or non-detected levels of any compounds reported herein. This Certificate shall not be reproduced except in full without the written approval of Marin Analytics, LLC. Copyright 2023 Marin Analytics, LLC All Rights Reserved.

HSP

Sample 627-071423-006

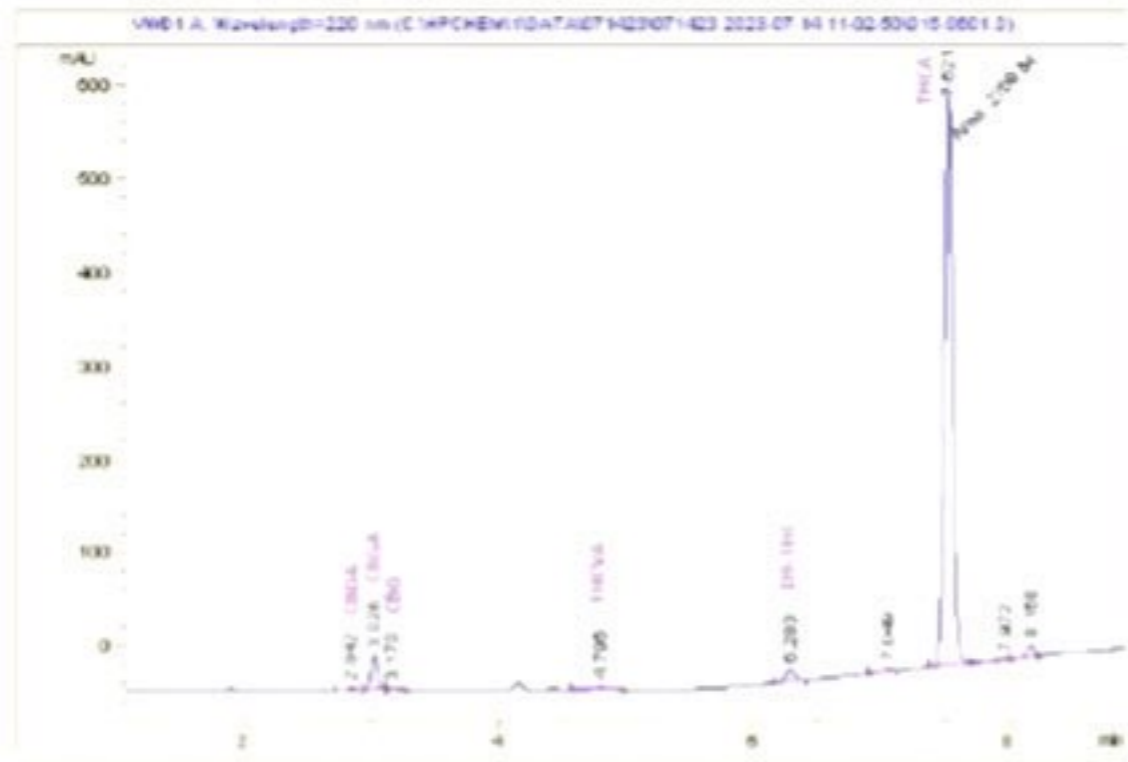
Girl Scout Cookies

Sample Submitted: 07-14-2023; Report Date: 07-17-2023

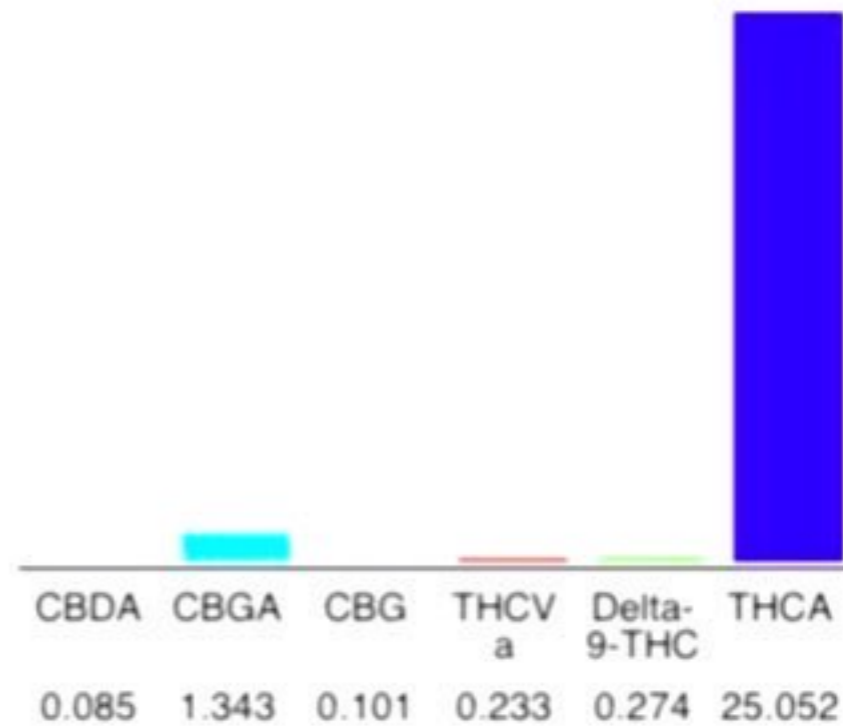
Girl Scout Cookies

Plant Material: Flower

Chromatogram



Cannabinoid Profile



Cannabinoid Profile by HPLC

0.27%
Delta-9-THC

0.00%
CBD

27.09%
Total Cannabinoids

| Cannabinoid | % wt | mg/g |
|-----------------------------|--------------|---------------|
| CBDA | 0.085 | 0.85 |
| CBGA | 1.343 | 13.43 |
| CBG | 0.101 | 1.01 |
| THCVa | 0.233 | 2.33 |
| Delta-9-THC | 0.274 | 2.74 |
| THCA | 25.05 | 250.52 |
| Total Cannabinoids | 27.09 | 270.9 |
| Calculated Total THC | 22.24 | 222.45 |
| Calculated CBD Yield | 0.07 | 0.75 |

Calculated Total THC = Delta-9-THC + 0.877 * THCA
 Calculated Maximum CBD Yield = CBD + 0.877 * CBDA

Marin Analytics, LLC
 250 Bel Marin Keys Blvd, Suite D4
 Novato, CA 94949
 833-321-TEST / info@marinanalytics.com

Sara Biancalana
Sara Biancalana
 Chief Scientist

This sample has been tested by Marin Analytics, LLC using valid testing methodologies and a quality system. Values reported relate only to the sample tested. Marin Analytics, LLC makes no claims as to the efficacy, safety, or other risks associated with any detected or non-detected levels of any compounds reported herein. This Certificate shall not be reproduced except in full without the written approval of Marin Analytics, LLC. Copyright 2023 Marin Analytics, LLC All Rights Reserved.