

Write your name here

Surname	Other names
---------	-------------

Pearson Edexcel Centre Number Candidate Number
Level 1/Level 2 GCSE (9-1)

--	--	--	--	--	--	--	--

Mathematics
Paper 1 (Non-Calculator)

Higher Tier

Thursday 24 May 2018 – Morning Time: 1 hour 30 minutes	Paper Reference 1MA1/1H
--	-----------------------------------

You must have: Ruler graduated in centimetres and millimetres, protractor, pair of compasses, pen, HB pencil, eraser.
Tracing paper may be used.

Total Marks

Instructions

- Use **black** ink or ball-point pen.
- **Fill in the boxes** at the top of this page with your name, centre number and candidate number.
- Answer **all** questions.
- Answer the questions in the spaces provided – *there may be more space than you need.*
- You must **show all your working**.
- Diagrams are **NOT** accurately drawn, unless otherwise indicated.
- **Calculators may not be used.**



Information

- The total mark for this paper is 80
- The marks for **each** question are shown in brackets – *use this as a guide as to how much time to spend on each question.*

Advice

- Read each question carefully before you start to answer it.
- Keep an eye on the time.
- Try to answer every question.
- Check your answers if you have time at the end.

Maths Made Easy

Turn over ►

P48861A

©2018 Pearson Education Ltd.
6/17/17/18/17/11



P 4 8 8 6 1 A 0 1 2 0



Answer ALL questions.

Write your answers in the spaces provided.

You must write down all the stages in your working.

1 (a) Work out $2\frac{1}{7} + 1\frac{1}{4}$

$$2\frac{1}{7} = \frac{15}{7} \times \frac{4}{4} = \frac{60}{28}$$

$$\frac{60}{28} + \frac{35}{28} = \frac{95}{28}$$

$$1\frac{1}{4} = \frac{5}{4} \times \frac{7}{7} = \frac{35}{28}$$

Both get the mark

$$\frac{95}{28} \text{ or } 3\frac{11}{28}$$

(2)

(b) Work out $1\frac{1}{5} \div \frac{3}{4}$

Give your answer as a mixed number in its simplest form.

$$1\frac{1}{5} = \frac{6}{5}$$

$$\frac{6}{5} \div \frac{3}{4}$$

$$\frac{6}{5} \times \frac{4}{3} = \frac{24}{15} = \frac{8}{5} = 1\frac{3}{5}$$

$$1\frac{3}{5}$$

(2)

(Total for Question 1 is 4 marks)



DO NOT WRITE IN THIS AREA

DO NOT WRITE IN THIS AREA

DO NOT WRITE IN THIS AREA

2 In a village

the number of houses and the number of flats are in the ratio 7 : 4

the number of flats and the number of bungalows are in the ratio 8 : 5

There are 50 bungalows in the village.

How many houses are there in the village?

$$\begin{array}{l} \text{Houses} \quad : \quad \text{Flats} \\ 7 \quad : \quad 4 \\ \times 20 \quad \left(\begin{array}{l} \\ \\ \end{array} \right) \times 20 \\ \hline 140 \end{array} \quad \begin{array}{l} \text{Flats} \quad : \quad \text{bungalows} \\ 8 \quad : \quad 5 \\ 10 \times \left(\begin{array}{l} 8 \\ 80 \end{array} \right) \times 10 \\ \left(\begin{array}{l} 5 \\ 50 \end{array} \right) \times 10 \end{array}$$

140

(Total for Question 2 is 3 marks)



P 4 8 8 6 1 A 0 3 2 0

3 Renee buys 5 kg of sweets to sell.
She pays £10 for the sweets.

Renee puts all the sweets into bags.
She puts 250 g of sweets into each bag.
She sells each bag of sweets for 65p.

Renee sells all the bags of sweets.

Work out her percentage profit.

$$\text{Total Sweets} = 5 \text{ Kg}$$

How many 250g bags?

$$\frac{5000\text{g}}{250\text{g}} = 20 \text{ bags}$$

20 bags each sold for 65p

$$20 \times 65 = 1300\text{p} = \text{£} 13.00$$

$$\begin{array}{r|l|l} & 60 & 5 \\ \hline 20 & 1200 & 100 \end{array} = 1300$$

$$\begin{array}{l} \text{profit} = \text{money earned} - \text{money spent} \\ \text{£}13 \quad - \quad 10 = \text{£}3 \end{array}$$

$$\text{Percentage} = \frac{3}{10} \times 100 = 30\%$$

30 %

(Total for Question 3 is 4 marks)



DO NOT WRITE IN THIS AREA

DO NOT WRITE IN THIS AREA

DO NOT WRITE IN THIS AREA

4 A cycle race across America is 3069.25 miles in length.

Juan knows his average speed for his previous races is 15.12 miles per hour.
For the next race across America he will cycle for 8 hours per day.

(a) Estimate how many days Juan will take to complete the race.

$$3069.25 \rightarrow 3000$$

$$15.12 \rightarrow 15$$

$$\frac{200}{8} = 25 \text{ days}$$

$$\frac{3000}{15} = 200 \text{ hours}$$

25 days
(3)

Juan trains for the race.
The average speed he can cycle at increases.
It is now 16.27 miles per hour.

(b) How does this affect your answer to part (a)?

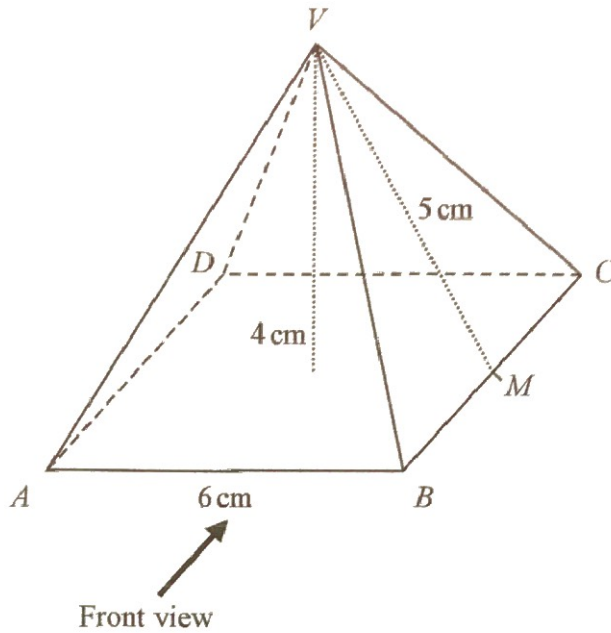
Time will decrease / less days required

(1)

(Total for Question 4 is 4 marks)

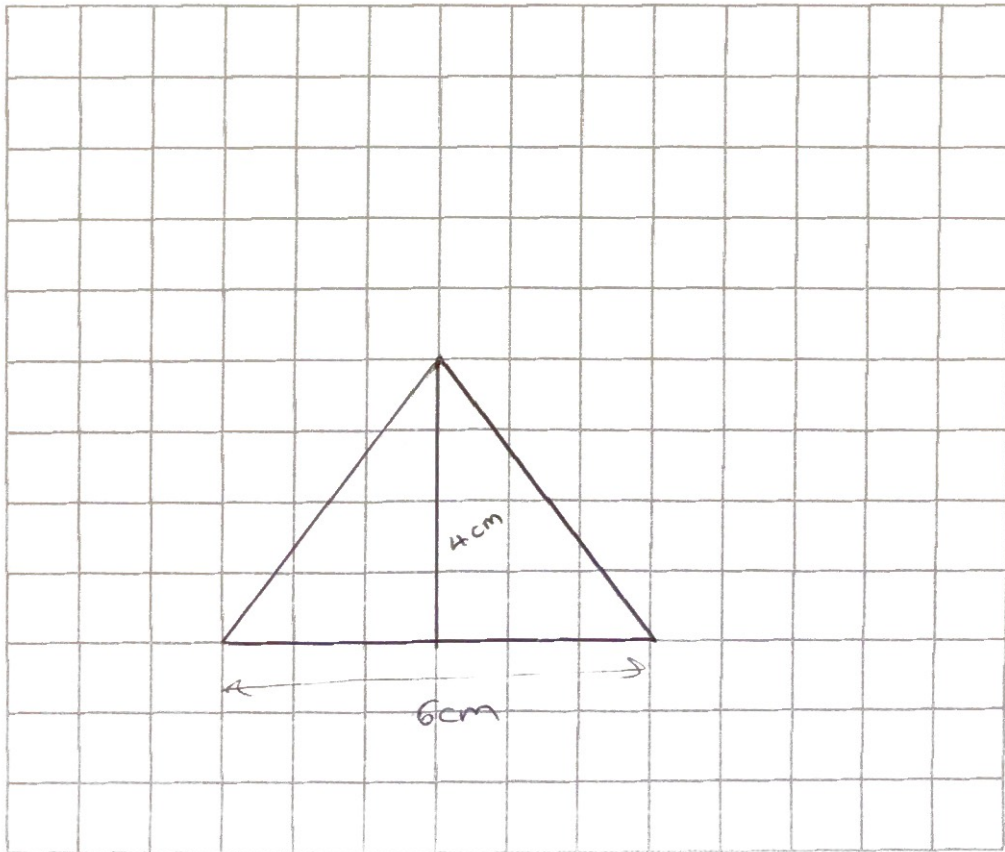


5 Here is a solid square-based pyramid, $VABCD$.



The base of the pyramid is a square of side 6 cm.
 The height of the pyramid is 4 cm.
 M is the midpoint of BC and $VM = 5$ cm.

(a) Draw an accurate front elevation of the pyramid from the direction of the arrow.



(2)



DO NOT WRITE IN THIS AREA

DO NOT WRITE IN THIS AREA

DO NOT WRITE IN THIS AREA

DO NOT WRITE IN THIS AREA

DO NOT WRITE IN THIS AREA

DO NOT WRITE IN THIS AREA

(b) Work out the total surface area of the pyramid.

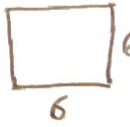


$\times 4$

Area = $\frac{1}{2}$ base \times height

$$\frac{1}{2} \times 6 \times 5 = 15$$

$$15 \times 4 = 60$$



$\times 1$

$$6 \times 6 = 36$$

$$60 + 36 = 96$$

Perk 80 set
units

96 cm²

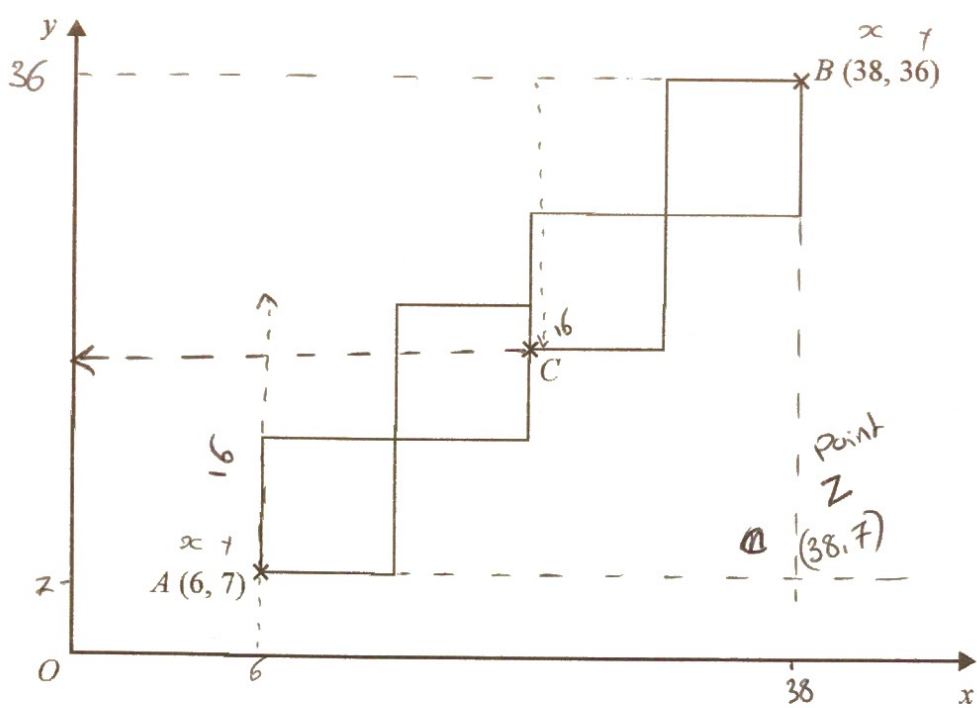
(4)

(Total for Question 5 is 6 marks)



P 4 8 8 6 1 A 0 7 2 0

6 A pattern is made from four identical squares.
 The sides of the squares are parallel to the axes.



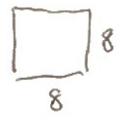
Point A has coordinates (6, 7)
 Point B has coordinates (38, 36)
 Point C is marked on the diagram.

Work out the coordinates of C.

$$38 - 6 = 32$$

$$4 \text{ Squares} = 32$$

$$1 \text{ Square} = 8$$



$$36 - 7 = 29$$

Coordinates for C.

$$x = 6 + 16 = 22$$

2 squares

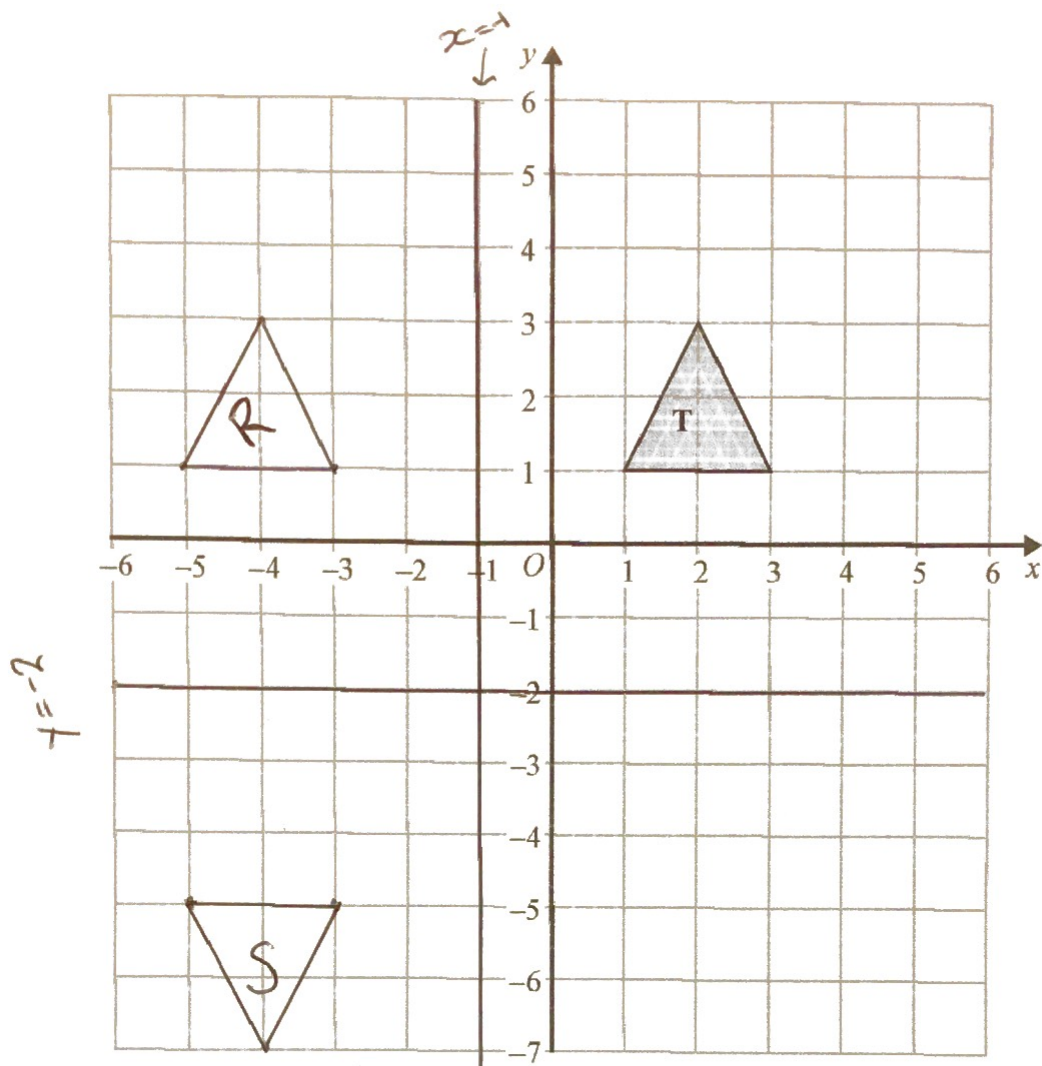
$$y = 36 - 16 = 20$$

(22 , 20)

(Total for Question 6 is 5 marks)



7



Shape T is reflected in the line $x = -1$ to give shape R.
 Shape R is reflected in the line $y = -2$ to give shape S.

Describe the **single** transformation that will map shape T to shape S.

Rotation 180° about $(-1, -2)$

or

Enlargement $S_f -1$ centre $(-1, -2)$

(Total for Question 7 is 2 marks)



- 8 The perimeter of a right-angled triangle is 72 cm.
The lengths of its sides are in the ratio 3 : 4 : 5

Work out the area of the triangle.

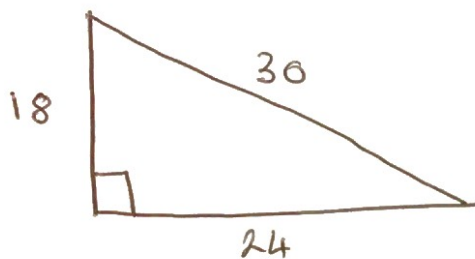
$$3 : 4 : 5 = 12 \quad \frac{72}{12} = 6$$

$$18 : 24 : 30$$

$$6 \times 3 = 18$$

$$6 \times 4 = 24$$

$$6 \times 5 = 30$$



30 must be the ~~hypotenuse~~ hypotenuse must be the longest length.

Area of a triangle = $\frac{1}{2} b \times h$

$$\frac{1}{2} \times 18 \times 24 = 216$$

216 cm²

(Total for Question 8 is 4 marks)

DO NOT WRITE IN THIS AREA

DO NOT WRITE IN THIS AREA

DO NOT WRITE IN THIS AREA



DO NOT WRITE IN THIS AREA

9 (a) Write down the value of $36^{\frac{1}{2}}$

$\frac{1}{2}$ = Square root

$$\sqrt{36} = 6$$

6

(1)

(b) Write down the value of 23^0

anything to power 0 = 1

1

(1)

(c) Work out the value of $27^{-\frac{2}{3}}$

- means inverse

$$a^{\frac{1}{n}} = \sqrt[n]{a}$$

$$27^{-\frac{3}{2}} = \frac{1}{\sqrt[3]{27^2}} = \frac{1}{3^2} = \frac{1}{9}$$

The powers can be done in any order

$\frac{1}{9}$

(2)

(Total for Question 9 is 4 marks)

DO NOT WRITE IN THIS AREA

DO NOT WRITE IN THIS AREA

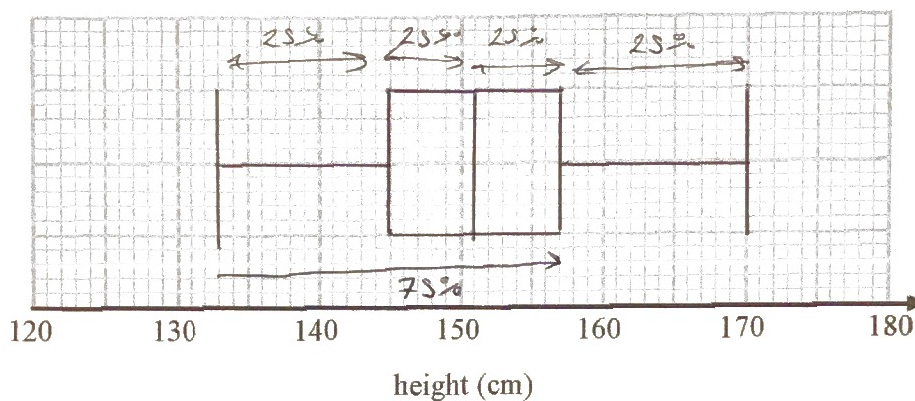


P 4 8 8 6 1 A 0 1 1 2 0

10 The table gives some information about the heights of 80 girls.

Least height	133 cm
Greatest height	170 cm
Lower quartile	145 cm
Upper quartile	157 cm
Median	151 cm

(a) Draw a box plot to represent this information.



(3)

(b) Work out an estimate for the number of these girls with a height between 133 cm and 157 cm.

each quartile = 25% of the sample

$$133 \rightarrow 157 = 75\%$$

$$75\% \text{ of } 80 = 60$$

60

(2)

(Total for Question 10 is 5 marks)

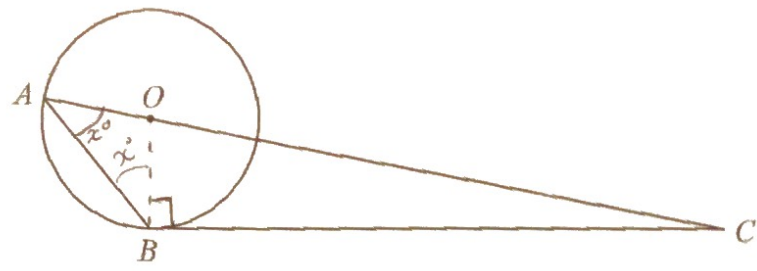


DO NOT WRITE IN THIS AREA

DO NOT WRITE IN THIS AREA

DO NOT WRITE IN THIS AREA

11



A and B are points on a circle, centre O.

BC is a tangent to the circle.

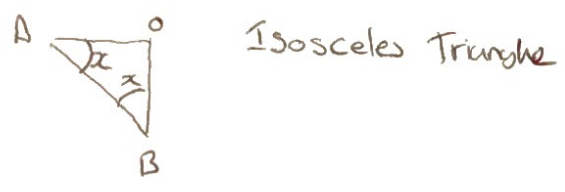
AOC is a straight line.

Angle $ABO = x^\circ$.

Find the size of angle ACB , in terms of x .

Give your answer in its simplest form.

Give reasons for each stage of your working.



So $ACB = 180^\circ - 90^\circ - x - x$
 $\underline{\underline{90^\circ - 2x}}$

(Total for Question 11 is 5 marks)



P 4 8 8 6 1 A 0 1 3 2 0

12 Prove that the square of an odd number is always 1 more than a multiple of 4

$$2n = \text{even}$$

$$2n+1 = \text{odd}$$

$$(2n+1)^2$$

$$(2n+1)(2n+1) = 4n^2 + 2n + 2n + 1$$

$$4n^2 + 4n + 1$$

Factorise by
4

$$4(n^2 + n) + 1$$

multiple of 4

↓
1 more
than a multiple
of 4

(Total for Question 12 is 4 marks)

13 $\sqrt{5}(\sqrt{8} + \sqrt{18})$ can be written in the form $a\sqrt{10}$ where a is an integer.

Find the value of a .

$$\sqrt{5}(\sqrt{8} + \sqrt{18}) = \sqrt{40} + \sqrt{90}$$

Simplify →

$$\sqrt{40} = \sqrt{4 \times 10} = 2\sqrt{10}$$

$$\sqrt{90} = \sqrt{9 \times 10} = 3\sqrt{10}$$

$$2\sqrt{10} + 3\sqrt{10} = 5\sqrt{10}$$

$$a = 5$$

(Total for Question 13 is 3 marks)



DO NOT WRITE IN THIS AREA

14 y is inversely proportional to d^2
When $d = 10, y = 4$

d is directly proportional to x^2
When $x = 2, d = 24$

Find a formula for y in terms of x .
Give your answer in its simplest form.

$$y \propto \frac{1}{d^2}$$

$$y = \frac{k}{d^2}$$

$$4 = \frac{k}{10^2}$$

$$4 \times 10^2 = k$$

$$400 = k$$

$$y = \frac{400}{d^2}$$

DO NOT WRITE IN THIS AREA

$$d \propto x^2$$

$$d = kx^2$$

$$24 = k \cdot 2^2$$

$$\frac{24}{2^2} = k$$

$$d = 6x^2$$

$$\frac{24}{4} = k$$

$$6 = k$$

Sub d in for d

$$y = \frac{400}{(6x^2)^2}$$

$$y = \frac{400}{36x^4}$$

$$\Rightarrow y = \frac{100}{9x^4}$$

$$y = \frac{100}{9x^4}$$

(Total for Question 14 is 5 marks)

DO NOT WRITE IN THIS AREA



15 (a) Factorise $a^2 - b^2$

← Difference between 2 Squares

$$(a+b)(a-b)$$

~~(a-b)~~

(1)

(b) Hence, or otherwise, simplify fully $(x^2 + 4)^2 - (x^2 - 2)^2$

$$(x^2 + 4)^2 = (x^2 + 4)(x^2 + 4) = x^4 + 4x^2 + 4x^2 + 16$$

$$x^4 + 8x^2 + 16$$

$$(x^2 - 2)(x^2 - 2) = x^4 - 4x^2 + 4$$

$$(x^4 + 8x^2 + 16) - (x^4 - 4x^2 + 4) = 12x^2 + 12$$

$$\boxed{\text{or } 12(x^2 + 1)} \quad \frac{12x^2 + 12}{(3)}$$

(Total for Question 15 is 4 marks)

16 There are only red counters, blue counters and purple counters in a bag.

The ratio of the number of red counters to the number of blue counters is 3 : 17

Sam takes at random a counter from the bag.

The probability that the counter is purple is 0.2

$$3 : 17 = 20$$

Red : Blue

Work out the probability that Sam takes a red counter.

$$\text{Probability purple} = 0.2$$

$$\text{Probability Red or blue} = 0.8$$

$$\frac{0.8}{20} = 0.04$$

$$\text{Red: } 0.04 \times 3 = 0.12$$

$$\text{Blue: } 0.04 \times 17 = 0.68$$

$$0.12$$

(Total for Question 16 is 3 marks)



DO NOT WRITE IN THIS AREA

DO NOT WRITE IN THIS AREA

DO NOT WRITE IN THIS AREA

17 Simplify fully $\frac{3x^2 - 8x - 3}{2x^2 - 6x}$

$$\frac{3x^2 - 8x - 3}{2x^2 - 6x} \xrightarrow{\text{Factorise}} \frac{(3x + 1)(x - 3)}{2x(x - 3)}$$

now cancel out $(x - 3)$

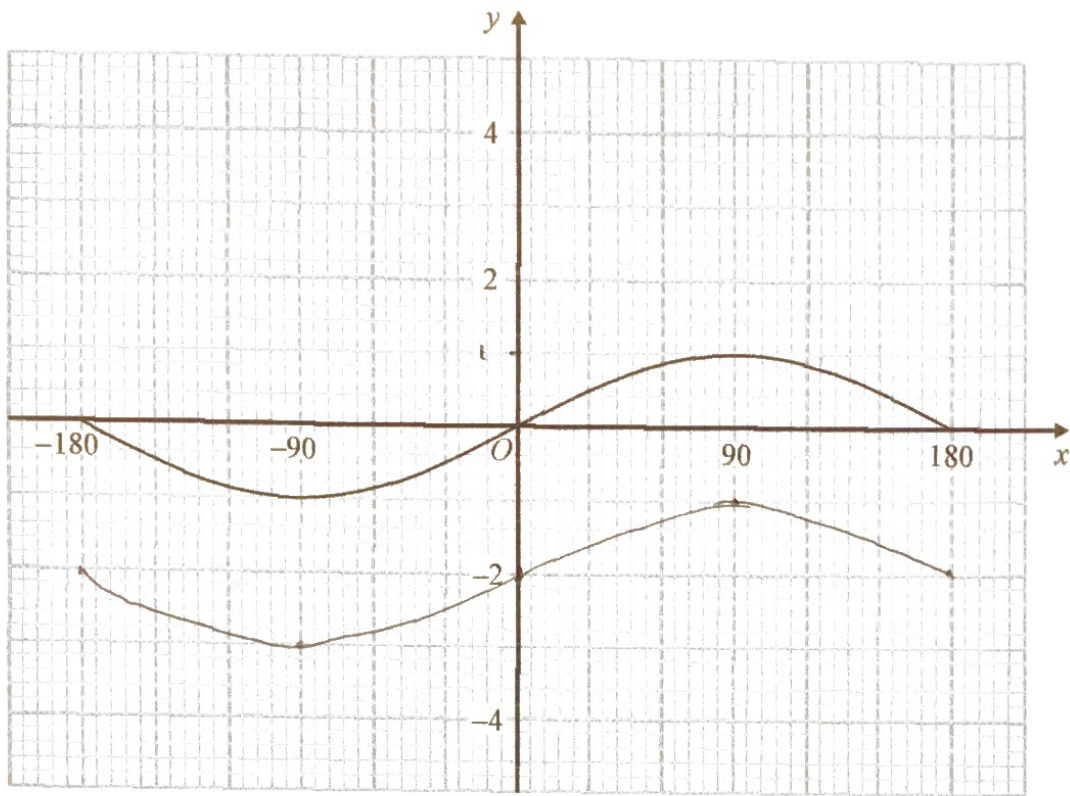
$$\frac{(3x + 1)\cancel{(x - 3)}}{2x\cancel{(x - 3)}} = \frac{3x + 1}{2x}$$

$$\frac{3x + 1}{2x}$$

(Total for Question 17 is 3 marks)



18 Here is the graph of $y = \sin x^\circ$ for $-180 \leq x \leq 180$



On the grid, sketch the graph of $y = \sin x^\circ - 2$ for $-180 \leq x \leq 180$

Just shift the graph down -2 in the y direction

(Total for Question 18 is 2 marks)

DO NOT WRITE IN THIS AREA

DO NOT WRITE IN THIS AREA

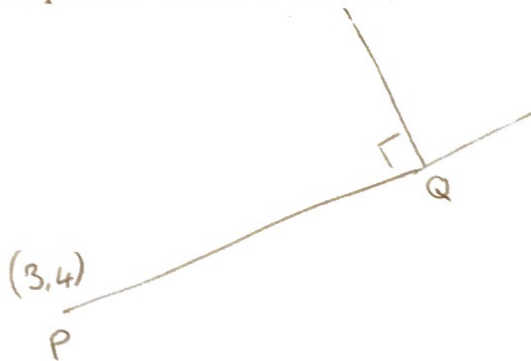
DO NOT WRITE IN THIS AREA



- 19 The point P has coordinates $(3, 4)$
The point Q has coordinates (a, b)

A line perpendicular to PQ is given by the equation $3x + 2y = 7$

Find an expression for b in terms of a .



$$m \times -\frac{1}{m} = -1$$

rearrange $3x + 2y = 7$ into $y = mx + c$

$$\begin{aligned} 2y &= -3x + 7 \\ \div 2 & \quad \quad \quad \div 2 \end{aligned} \quad y = -\frac{3}{2}x + 3.5$$

gradient of line = $-\frac{3}{2}$

gradient of line $PQ = \frac{2}{3}$

$$y = \frac{2}{3}x + c \quad \begin{aligned} x &= 3 \\ y &= 4 \end{aligned}$$

$$4 = \frac{2}{3} \cdot 3 + c$$

$$4 = 2 + c$$

$$2 = c$$

equation of line $PQ =$
 $y = \frac{2}{3}x + 2$

"Find expression for b in terms of a "

$$a = x$$

$$b = y$$

So.....

$$b = \frac{2}{3}a + 2$$

$$b = \frac{2}{3}a + 2$$

(Total for Question 19 is 5 marks)



20 n is an integer such that $3n + 2 \leq 14$ and $\frac{6n}{n^2 + 5} > 1$

Find all the possible values of n .

$$3n + 2 \leq 14$$

Just solve for n

$$3n \leq 12$$

$$n \leq 4$$

So n is 4 or below

$$\frac{6n}{n^2 + 5} > 1$$

$$6n > n^2 + 5$$

$$-6n \quad -6n$$

$$0 > n^2 - 6n + 5$$

factorise

$$0 > (n-1)(n-5)$$

$$n = 1$$

$$n = 5$$

$$1 < n < 5$$

n can be 2, 3, 4

∴ The numbers which satisfy both are 2, 3, 4

2, 3, 4

(Total for Question 20 is 5 marks)

TOTAL FOR PAPER IS 80 MARKS

