

*He is making*

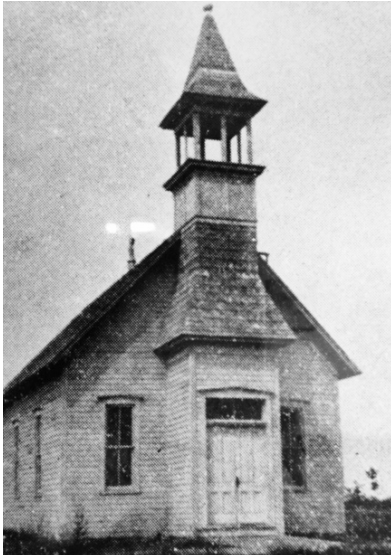
# ALL THINGS NEW

---

First Presbyterian Church of Edmond  
2016 Annual Report



WE ARE A COMMUNITY  
OF JOYFUL CHRISTIANS,  
BEING EQUIPPED AS DISCIPLES  
AND MAKING DISCIPLES  
FOR JESUS CHRIST.







## CHURCH

Message from Dr. Eric Laverentz 4  
Session Members & Diaconate 5  
Ministry Update: Rev. Matt Jones 6  
Ministry Update: Rev. Jen Howat 7  
Staff 8  
Membership 9  
Deacons 10-11  
Connections Committee 12  
ECO Focus Team 13  
Ministry Support 14  
Property Committee 15  
Personnel Committee 16  
Communications Committee 17

## GIVING

Finance 18  
Endowment Fund 19  
Treasurer's Report 20  
Income & Expenses 21

## DISCIPLESHIP

Adult Discipleship 22-24  
Student Ministry 25-27  
Kids' Ministry 28-29  
Music Ministry 30-31  
Go/Mission 32  
Boy Scouts of America 33  
Early Childhood Program 34-35

# REV. DR. ERIC LAVERENTZ

## Lead Pastor

It's been just about six months since I began my call as your Lead Pastor. Lately I have found myself telling people that I don't believe I have had a more enjoyable time in ministry. There is so much we can be thankful and excited about in what Jesus is doing in and through His congregation, First Presbyterian Church of Edmond, Oklahoma.

To share just a few exciting things:

- Increase in financial commitments of nearly 10.25% for 2017.
- Successful completion of the "All Things New" outreach campaign
- We've seen a spike in the number of people in worship, with an average of between 680-690 people—20% higher than the fall
- We are seeing a spike of people everywhere—in children, youth, music ministry and small groups
- The retirement of the mortgage debt
- Hiring of Dave Moore as our Executive Director of Ministry Support
- An amazing offering, once again, of One Incredible Moment
- We finished the year as good stewards, with our giving exceeding our spending and the implementation of a balanced budget for 2017



The Holy Spirit is at work at FPCE. So many of you have told me how thrilled you are for what you are seeing. 2017 promises so very much. Here are a few things we have in process:

- A re-launch of our small groups, with leaders trained in our "Seven Core Practices"
- The elders are working together to transform our leadership philosophy and structure along more Biblical lines
- Project 10:45 will provide bite-size, easily implementable opportunities for our small groups to share the Gospel outside our walls
- Increased use of technology to share the timeless truth of God's Word around the world
- An innovative new members process that will create community and hospitality
- Increased mission spending to further the spread of the Gospel via our ministry partners
- The search for another key team member, the Director of Music and Worship Arts


We are entering a wonderful season at FPCE. There is so much to be thankful for. However, we cannot rest. We must be good stewards of the season because times like this, as we all know, do not always come around. A lot of prayer and work, going back for decades, has made this season possible. We stand on the shoulders of giants. We must begin to prayerfully consider a longer term vision, a bigger, more enduring picture. How is Jesus at work in Edmond and beyond? And what is our role?

I am grateful for all of you and it is my delight to serve our Lord with you.

In Jesus,

A handwritten signature in dark ink, appearing to read "Eric". The script is fluid and cursive, with a large initial "E".

Eric



We exist to GATHER for worship and community,  
GROW in intimacy and understanding,  
and GO to serve and share.

## SESSION MEMBERS

### Class of 2016

David Dude  
Tom Langdon  
Ken Rees  
Bill Roberts  
Don Schiesz  
Sheri Stickley  
Geary Walke

### Class of 2017

Linda Boyce  
Barry Davis  
Holmes Fuller  
Danielle Herndon  
Veta Roberts  
Lee Schmidt

### Class of 2018

Maggie Martin  
Mark McCasland  
Ryan Siler

### Pastors

Rev. Dr. Eric Laverentz  
Rev. Matt Jones  
Rev. Jen Howat

### Clerk of Session

Libby Cahalan

## DIACONATE

### Class of 2016

Marsha Bath  
Cheri Blackwood  
Kenny Brown  
Kristen Davis  
Amy Mason  
Eunice Menja  
Dwight Schulke  
Gina Sloniker

### Class of 2017

Jim Bower  
Jan Fees  
Kelly Funderburk  
Beth Hooper  
Karla Launhardt  
Sissy Tubb  
Marsha Zwiebel

### Class of 2018

Carol Alexander  
Cindy Birdwell  
Debbie Hall  
Kathy Horner  
Hannah Morgan  
Gary Ramsdell  
Carrie Ann Richter  
Gary Willis

### Moderator

Marsha Bath

### Vice Moderator

Kelly Funderburk

### Secretary

Beth Hooper

### Ex Officio

Rev. Matt Jones



# REV. MATT JONES

## Associate Pastor of Congregational Care



What a year this has been! God's faithfulness has been amazing, and I am so grateful to The Lord for His provision as I served at FPCE in 2016 and the first part of 2017.

One of the highlights of the past year was that I served the Church as our congregation transitioned into new pastoral leadership. It was a joy to partner in the Gospel with Pastor Jen as we shared in preaching and other duties before Pastor Eric's arrival. We planned worship services and experienced God's grace throughout them. We enlisted the help of great lay leaders who were wonderful help with administration and in the pulpit.

In serving as interim moderator of the Session, I shared with the elders in the joy of praying for the congregation's spiritual vitality. I joined others in the training of church officers in the spring of 2016.

And along with those interim duties, I was blessed to be involved with all kinds of typical pastoral care duties, from individual and family care to Stephen Ministry to Deacons. I am the pastor liaison to our board of Deacons and have enjoyed working with the Deacons' moderator, Kelly Funderburk, and our other Deacons. I was heavily invested with the Deacons' Benevolence Team. We worked together on many hospitality arrangements for grieving families and gift-giving to others in need. The Stephen Ministers are doing great work at our church, as are the boy scouts and cub scouts, of which I serve as pastor liaison.

It has been a joy to lead in prayer, whether it has been on Sunday mornings or times in the chapel or in hospital rooms. God has been faithful in all these times.

Last, but not least, in the last six months or so, it has been wonderful to serve on the pastoral leadership team. I believe we are in a great season as a church staff and leaders at FPCE. God is moving and we are blessed to be part of what Jesus is doing in our midst. Please know that I will continue to pray that God will be glorified in all that we do!

Yours in Christ,

A handwritten signature in blue ink that reads "Matt Jones". The signature is fluid and cursive, with a long horizontal stroke at the end.

Matt Jones

# REV. JEN HOWAT

## Associate Pastor of Assimilation, Discipleship & Spiritual Formation

As I reflect on ministry this past year I can really see how the Holy Spirit has been moving the church further forward into God's vision. Here are some highlights from 2016.

This past year approximately 65 people met in small groups in the spring (Feb-May) and fall (Aug-Nov) semesters. It was a privilege to meet with our small group facilitators several times each semester for a time of sharing and training. I also developed a 12 week small group curriculum called "3G" which provided the opportunity to Gather, Grow and Go! At 3G people got connected, shared life, reflected on scripture, and were better equipped to "go" after processing the results of a comprehensive survey that helped them reflect on their SHAPE (spiritual gifts, habits, abilities, passion and experience).



During this time we also went into a period of evaluation of our small group ministry which led us to shift away from semesters and managing groups to equipping and pouring into people. Our pastoral team developed 7 core practices for every small group to integrate into its life. The last quarter of the year was spent developing curriculum for spiritual formation and training of our small group leaders. By the time you read this we'll be right in the middle of our training in preparation to launch our new small group ministry in March.

TEAM stands for Together Everyone Achieves More and it is a night (3rd Monday of the month) when our leaders, committee members and others interested in the direction of the church come together for vision casting, training and sharing. During the first half of the year, committees introduced themselves, talked about their ministry and shared how it fits into our pathway of Gather, Grow, and Go. It was exciting to hear all that they were doing to equip disciples to make disciples for Jesus! It also gave us an opportunity to specifically pray for and encourage each committee. In the summer we began to do some work on alignment. This helped us to make sure every ministry of FPCE had a "home" under a committee, enabled us to begin to think about how our ministries impact each other and how we can partner together!

I worked on revising our Elder and Deacon training to move us closer to the biblical view of spiritual leadership. The redevelopment of materials and several months of training was in partnership with Pastor Matt and other key elders.

I helped facilitate our new member process several times in 2016. Towards the end of the year, the leadership asked if we were in fact doing our very best at preparing people to join our church. I met with a task force of 4 elders and we prayed about how we can best prepare people for membership. As a result, we identified 4 core pieces of content that we want each person to engage with in preparation for joining but we want to deliver that content in a way that meets the needs and schedule of each person.

I preached thirteen Sundays and led the Maundy Thursday and Blue Christmas services. And since September, I have had the pleasure of walking with our young adults as we go through the book of James.

- Attended the ECO National Gathering in January 2016
- Finished training as our region's leader in ECO's discipleship initiative
- Traveled to Grace Presbyterian Church, Houston three times for retreats to deliver content of ECO discipleship initiative and coached senior leaders of the congregation monthly
- Serve as pastoral liaison to Adult Discipleship, Connections, Kid's Ministry and Student Ministry committees
- Direct supervisor for Director of Kid's Ministry and Director of Student Ministry

Joy,

A handwritten signature in dark ink, appearing to read "Jen Howat". The signature is fluid and cursive, written over a light blue horizontal line.

Jen

# FPCE STAFF

## Pastoral Staff

Rev. Dr. Eric Laverentz  
Rev. Jen Howat  
Rev. Matt Jones  
Sheila Cahlik  
Rev. Dr. Carl Bosteels  
Sheri Stickley

Lead Pastor (September)  
Associate Pastor  
Associate Pastor  
Administrative Assistant to Lead Pastor  
Transitional Head of Staff (until April)  
Interim Head of Staff (April-August)

## Business Office

Dave Moore  
Cynthia Jines  
Karla Launhardt  
Tracey Rice  
Rick Roberts

Executive Director of Ministry Support (December)  
Financial Assistant (August)  
Financial Assistant (August)  
Financial Assistant (until August)  
Church Administrator (until August)

## Communications

Amy McCasland

Media Coordinator

## Missions

Sharon Boecking  
Mandy Apple

Volunteer Coordinator (August)  
Volunteer Coordinator (August-December)

## FPCE Library

Carol Harrison

Librarian

## Early Childhood Program

Mary Singleton  
Danette Farrah  
Debbie Frantz

Director of Early Childhood Program  
Co-Director of Early Childhood Program  
Administrative Assistant, Early Childhood Program

## Facilities

Marvin Houston  
Cloy Netherton  
Jim Pennington  
Esmeralda Davila  
Patricia Herrod  
Larry Shields  
Bill Thoele  
Sidney Carter

Director, Facilities  
Scheduling/Head Custodian  
Building Superintendent  
Custodian  
Custodian (August)  
Custodian (September)  
Custodian (until July)  
Custodian (until August)

## Kids' Ministry

Jean Wellfare  
Danielle Herndon  
Megan Martin

Director, Kids' Ministry  
Associate Director, Kids' Ministry  
Program Coordinator, Childcare (until June)

## Music & Worship Arts

Terry Attebery  
Ben Meek  
Michele Baker  
Tom Boles  
Jim VanHemert  
Jim Regin  
Tyler Boren  
Veta Roberts

Director, Contemporary Choir  
Director, Contemporary Worship & Music  
Wedding Coordinator (October)  
Sound Engineer  
Organist & Worship Choir Accompanist  
Director, Music & Worship Arts (until June)  
Worship Associate (February-December)  
Wedding Coordinator (until October)

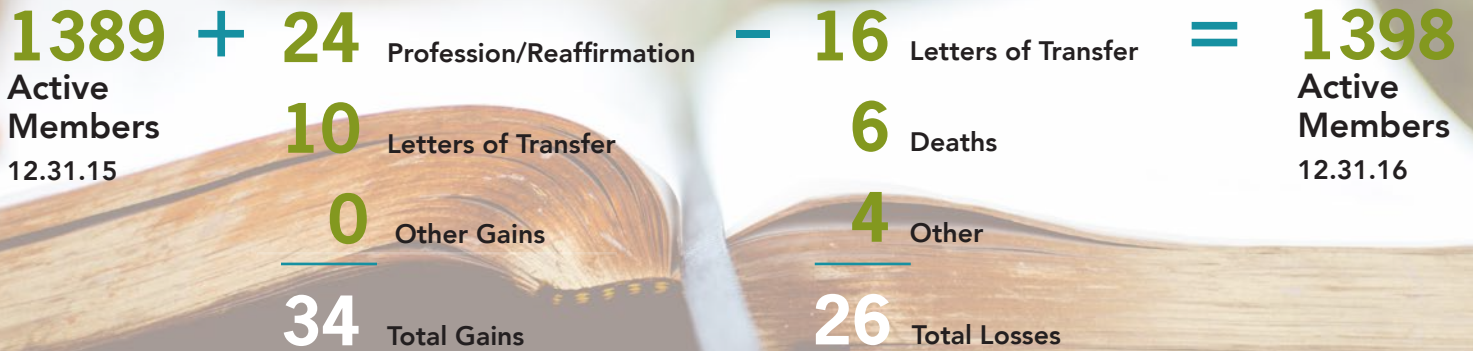
## Student Ministry

Alyssa Dees  
Brandon Gober  
Lauren Reddout

Director, Student Ministry  
Associate Director, Student Ministry (February)  
Intern, Student Ministry (August)



# MEMBERSHIP STATS



## F P C E MEMBERS

### New Members & Reinstated or Restored Members in 2016

Marla Belcher	Ross Harris	Tom Noles
Don Brice	Stephanie Harris	Carolynn Sawyerr
Karen Brice	Megan Mueggenborg	Seinde Sawyerr
Lori Evans	Marilyn Noles	Pam Woods

### Confirmation Class of 2016

Nate Becker	Emily Edwards	Joe Houck	Jane Mikkelson
John Bishop	Abby Eliot	Mary Helen Landes	Greyson Russell
Matthew Cromer	Bennett Ferrell	Kalli Launhardt	Katie Schneider
Mitchell Davis	Brooke Guarry	Ryan Mann	Corbin Stanley
James Duerson	Paige Guarry	Austin Mason	
Trysta Duerson	Timothy Hendrasaputra	Rita Menja	

### Deaths in the Year 2016

Wilma Caldwell December 25, 2015	Gordon Andersen October 27	John Wayant December 28
Bill Palmer February 18	Martha Featherstone November 7	



## DEACONS

Kelly Funderburk, Moderator  
Kathy Horner, Vice Moderator  
Carol Alexander, Secretary

Suzann Allison  
Michelle Barr  
Jim Bower  
Cindy Birdwell  
Jan Fees  
Debbie Hall

Gail Hammervold  
John Harrod  
Dadd Hendrasaputra  
Beth Hooper  
Scott Javaheri  
Karla Launhardt  
Hannah Morgan  
Gary Ramsdell  
Carrie Ann Richter  
Julie Schmidt

Sissy Tubb  
Tom Wilkinson  
Gary Willis  
Marsha Zwiebel

Ex Officio:  
Rev. Matt Jones

There are 23 Deacons that serve First Presbyterian Church of Edmond, and this year the diaconate directory has been updated to include photos of everyone. The Deacons are divided into three teams in which they feel their talents best serve. The group serves communion, serves as greeters and each team provides a deacon to serve at the Monday Prayer Time. We organize meals for families experiencing illness or death of a loved one and the homebound are visited, served communion upon request and other support as needed. Deacons staff the Welcome Center and provide home maintenance or transportation to seniors. Distributions are made from the Deacons Fund to those suffering a sudden or unexpected financial hardship. Deacons serve as "deacon of the week" on a volunteer basis to assist counting the offering and making hospital visits.

### Senior Adults & Special Needs

Jan Fees & Hannah Morgan, Co-Coordinators

Carol Alexander, Michelle Barr, Debbie Hall, Carrie Ann Richter, Sissy Tubb, Marsha Zwiebel

The Senior Adults and Special Needs team contact all homebound monthly, pray for all senior adults and those with special needs, and provide seasonal gifts. They are often called to go with Rev. Matt Jones to pray with senior adults when end of life on earth is near.



# DEACONS

## Illness/Crisis/Bereavement

Beth Hooper & Karla Launhardt, Co-Coordiators

Cindy Birdwell, John Harrod, Julie Schmidt

The Illness/Crisis/Bereavement team provides a family meal or reception following a funeral, prays for families who have experienced loss, provides a host/hostess for memorial services or funerals, communicates with bereaved through visits, cards, phone calls, ministers to family members as needed, and provides six month and one year follow up care with the family. The Deacon Fund Policy is also administered by this team.

## Welcoming & Outreach

Gary Ramsdell, Coordinator

Suzann Allison, Jim Bower, Kelly Funderburk, Gail Hammervold, Dadd Hendrasaputra, Kathy Horner, Scott Javaheri, Tom Wilkinson, Gary Willis

The Welcoming and Outreach team organizes volunteers for the Welcome Center and greeters for Sunday services. They also coordinate the "Angel Tree" for Christmas gifts for residents of Grace Living Center, maintains a prayer list of FPCE college students and those serving in the military, and prepares and mails care packages to college students during finals week. The team provides bus transportation for our senior adults to church services and events and sends birthday cards to members 80 years and older. Time and Tool provides for the needs of senior members and single mothers, including minor home repairs and yard work or organizing for larger repairs if possible.





## CONNECTIONS COMMITTEE

Mike Gross, Chair  
Sarah Montgomery, Co-Chair

Nate Becker  
Davide Dude

Judy Gross  
Heath Heine  
Megan Heine  
Kathy Horner  
Faith Koester

Tom Mason  
Bill Roberts

Staff:  
Rev. Jen Howat

The Connections Committee had a busy and successful 2016. The Pentecost Picnic once again featured Kyle Dillingham and his band. A pot luck dinner with emphasis on all things “fowl” was also featured, along with face painting and an inflatable bounce house.

We have maintained the Guest Welcome Center in the Great Hall. Members of the committee, along with deacons and other volunteers, man this each Sunday and on special occasions. We provide information and assistance to anyone needing it. We provide guests an “information” bag with information about the church, candy and small items such as pens, refrigerator magnets, calendars, etc.

Members of the committee are charged with following-up, either verbally or written, with all first time guests the week following their visit.

A major project we have undertaken is a total revamp of the New Member classes. From now on, we are going to be more one-on-one with those who desire to join the church. It will now be easier for those with limited time and tight schedules to join the church. Judy Gross, our central membership host, and the Connections Committee have been recruiting church members to assist in helping to facilitate those wanting to join. If any member has a desire to help guests go from the “front porch” to the “kitchen”, please contact a member of the Connections Committee for more information.

We continue to partner with the Early Childhood Program (ECP) at FPCE. Other activities we are involved in are The Gathering on Wednesday nights, Cooks' Night Out on the 2nd Friday of each month, and marriage mentoring for those who wish to be married at FPCE.

A new program we are evaluating is mentorship of married couples. “Gather” is what we are all about.



## ECO FOCUS TEAM [DENOMINATIONAL RELATIONS]

Veta Roberts, Chair/Elder

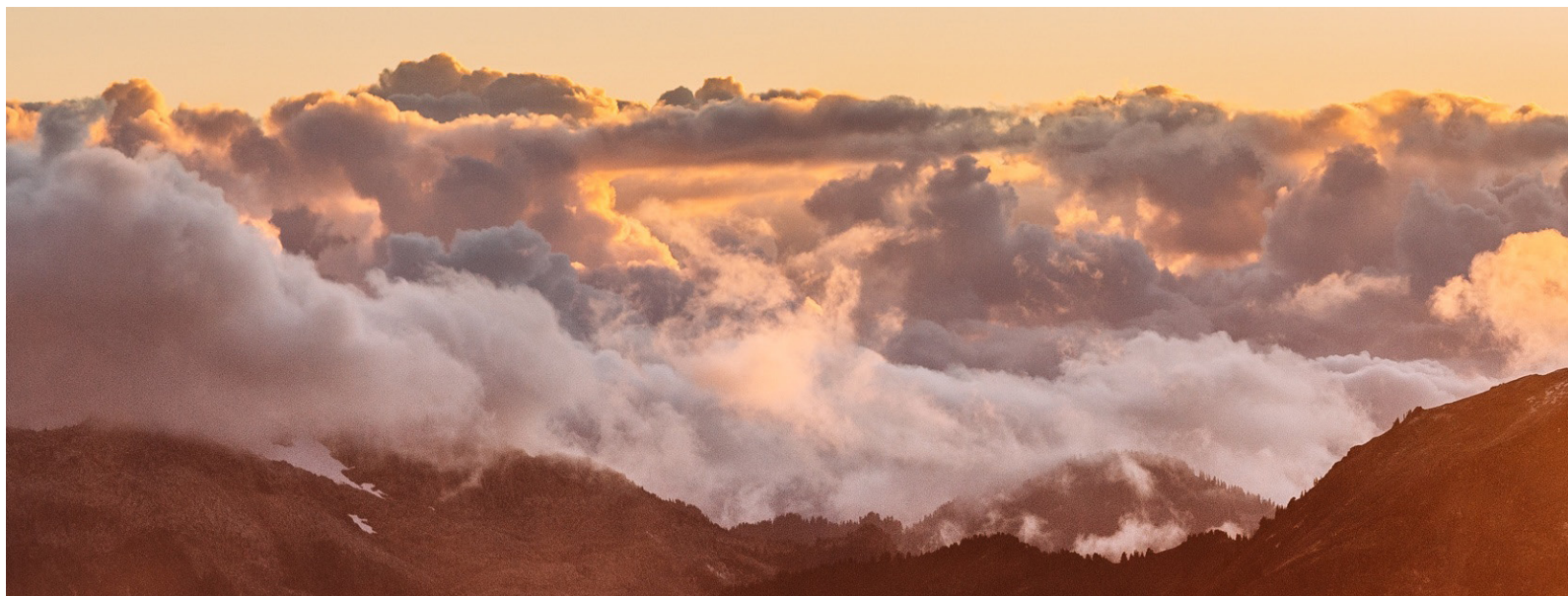
Jim Hartzog  
Bob Launhardt

January 2016 began with our delegates and pastors attending the ECO National Gathering in Newport Beach, CA. What an experience! This was the first “stand alone” national meeting for our new denomination. It was three days of praise and worship with only one half day of business meeting. This business meeting was brief with no dissention. Attending were Carl Bosteels, Jen Howat, Bob Launhardt, Jim Hartzog, and Veta Roberts.

As the year progressed, we wrote a mission statement for our committee and rebranded the group from Denominational Relations to ECO Focus Team! Our goal is to strengthen our relationship with other ECO churches and with the denomination. With that in mind, we traveled to Springfield, MO in August to attend a regional simulcast meeting with Colorado Springs hosting. All churches in the Presbytery of the West participated. Representatives from ID, MT, WY, NV, UT, CO, AZ, NM, KS AR, MO, and OK were present. We participate in ECO missions by giving to church plants, One by One, Wee Kirk and the Outreach Foundation.

As this is written, we are excited to be going to the 2017 National Gathering in Greenville, South Carolina. Sixteen people will be representing FPCE at this event!





## MINISTRY SUPPORT

Barry Davis, Finance/MS Moderator  
Linda Boyce, Personnel

Gary Moore, Property  
Tammy Toll, Communications

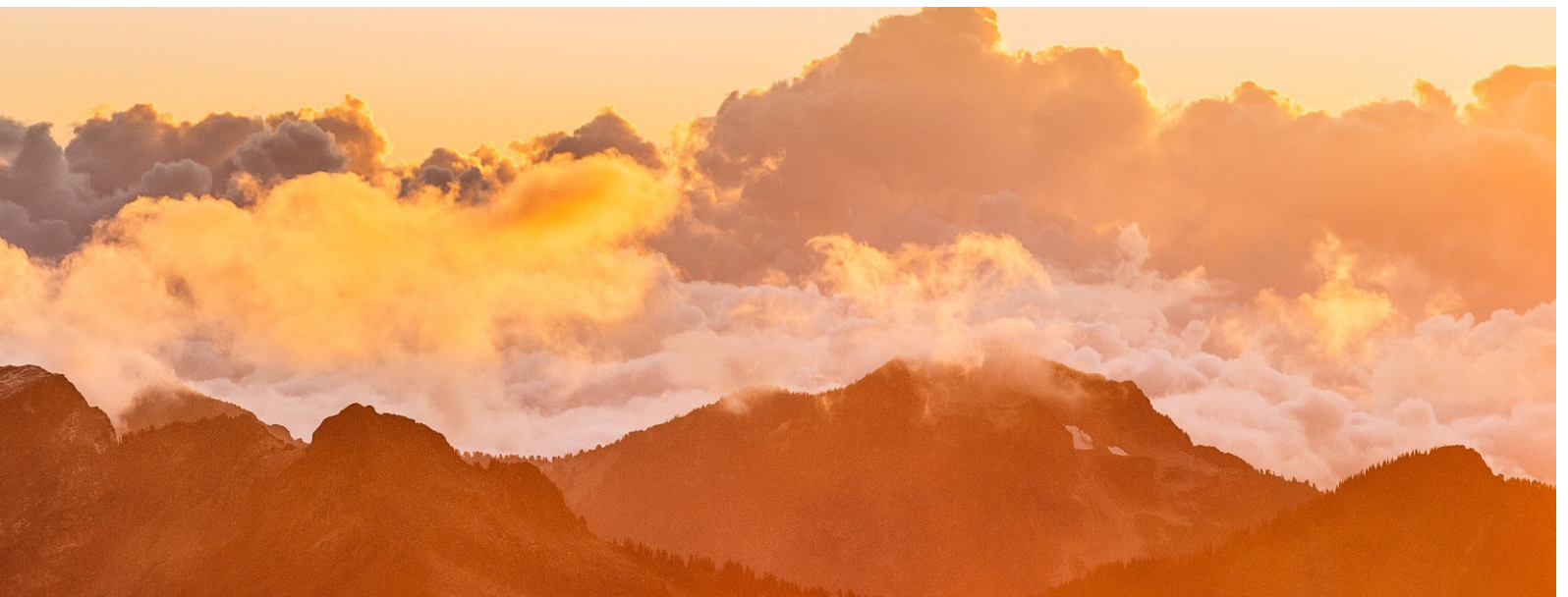
The Session voted in the spring to restructure Session committees into four major committees: “Gather”, “Grow”, “Go” and “Ministry Support” (MS). The Gather, Grow and Go Committees consist of “Program” sub-committees (or teams) and the Ministry Support Committee consists of Administrative sub-committees (or teams) consisting of Finance, Property, Personnel, and Communications. The Ministry Support Committee conducted a workshop in April, 2016 in order to formalize its role and structure. The role of the MS Committee is to coordinate the work of the four teams, resolve issues where two or more team’s decisions may conflict, set goals and budgets for MS functions, prepare monthly reports to Session summarizing the work of all four teams, and to effectively communicate issues concerning Ministry Support among the teams, to the other Session members, to the church staff and to the congregation as a whole.

The structure of MS consists of the chairs of each of the four teams plus the church administrator, now known as the Executive Director of Ministry Support. Three Elders on session will be assigned to serve on the MS Committee. The three Elders appointed to serve on MS will serve on the Finance, Personnel and Communications sub-committees, although not all these teams need to be chaired by a serving Elder. One of the serving Elders will serve as Moderator of the MS Committee. Each of the teams will conduct their own monthly meetings and make their minutes available to the MS Moderator.

The Chairs of the MS sub-committees this year were Barry Davis (Finance), Linda Boyce (Personnel), Gary Moore (Property), and Tammy Toll (Communications). Barry Davis was elected to serve as Moderator. We began meeting on Team Night, but realized we were still a work-in-progress and only needed to meet when substantial issues exist. We also realized that while the MS Moderator would report monthly to Session on MS business, a written report for Session was not necessary each month because the MS sub-committees file their own monthly minutes so an MS Moderator report would be redundant. The MS committee assisted Sheri Stickley, Transitional Head of Staff, in addressing some critical human resource issues. MS committee also assisted our new Lead Pastor in formulating a job description and interviewing candidates for the Executive Director of Ministry Support position.

Praise God From Whom All Blessings Flow!





## PROPERTY COMMITTEE

Gary Moore, Chair

Brian Attebery  
Pam Hainer  
Doug Hartwig  
John Laub

Greg Pace  
David Timberlake

Staff:  
Marvin Houston  
Dave Moore (December)

As noted previously in the Report, the Property Committee began functioning as a separate committee in May.

The mission of the committee is to protect and maintain the physical church and provide a secure setting for all gatherings, oversee policy for space allocation, consult with committees or staff regarding changes to the facility, set and monitor standards for maintaining the building and grounds, review and assist in the bid process, draft annual budget related to maintaining and improving the facilities, as well as prioritizing building projects.

The committee is also responsible for maintenance and control of all church vehicles.

During the eight months that the committee has existed as a separate entity, the Property Committee, in addition to normal oversight responsibilities, accomplished the following:

- Replaced the flooring in the ECP areas with durable laminate flooring
- Remodeled the ceiling and lighting in Fellowship Hall
- Replaced three heating and air conditioning units
- Purchased three Sanctuary monitors
- Purchased a gently used fifteen passenger Ford Transit van
- Initiated night security patrols



## PERSONNEL COMMITTEE

Linda Boyce, Chair/Elder

Harry Birdwell  
Jim Bower  
Jason Eliot  
Rick Roberts (until August)  
Sarah Timberlake

Ex-Officio:  
Rev. Eric Laverentz (September)  
Rev. Carl Bosteels (until April)  
Sheri Stickley (April-August)

The Personnel Committee assists the Session in the support and care for the FPCE staff. We look to Jesus Christ as the ultimate example in how to manage and develop a diverse workforce. In this regard, the Personnel Committee serves in an advisory capacity, providing support and guidance to the Lead Pastor, church staff and Ministry Support Committee chairpersons to ensure consistent application of policy and compliance where appropriate as an Equal Opportunity Employer. Our goal is to provide training and the development needed to accomplish the annual goals set by the Session and to enjoy personal and professional growth. The Personnel Committee is also in place to ensure employees are paid fairly and equitably based on their role and skill set. 2016 proved to be another year of significant change and challenges for FPCE. But as a result, we received many blessings and opportunities for improvement in operations.

- Executed revised personnel policies to:
  - Address developing needs and be in compliance with Federal & State Laws
  - Reflect the changes in day to day administration of church affairs
  - Review performance for all employees, adjusting job descriptions as needed
- Executed termination for performance issues with 1 employee; had 3 mutual separations and 1 retiree
- Assisted in development of job descriptions and/or compensation package for new Lead Pastor, Executive Director of Ministry Support and Associate Director of Student Ministry
- Reviewed more than 30 applications and conducted interviews for new Executive Director of Ministry Support. Offer made and accepted with hiring of Dave Moore in December.
- Revised organizational chart due to reflect staff changes, additions, restructuring
- Approved and coordinated a staff "Love Offering" in December
- Reviewed staff wages and salary data, approving cost of living adjustment increase for all staff



## COMMUNICATIONS COMMITTEE

Tammy Toll, Chair

Harry Emerson, Elder  
Georgia Fiering  
Brian Horner  
Megan Mueggenborg

Staff:  
Amy McCasland  
Dave Moore (December)

The role of the Communications Committee is to facilitate a cohesive, clear exchange of information between Pastors, staff, Session, congregants, and the community regarding opportunities to Gather, Grow and Go.

This Committee's work touches every ministry in the church and we are blessed to have a media coordinator on staff to aide in accomplishing this. This "behind the scenes" daily role is easily taken for granted. The media coordinator maintains the website, the central point for all information regarding the activities and outreach of FPCE, develops the weekly worship bulletin, the weekly e-newsletter, the seasonal FIRST LOOK Ministry & Events Guide, and all ministry promotions across all mediums. While it may seem like a short list, consider the fall when new studies/groups on multiple days are beginning, kids and student activities are in full swing, the annual stewardship campaign launches, and Advent services and events are promoted. The choreography required to give each ministry and activity its voice, working largely with volunteer input, is a complex production. While the media coordinator as staff executes the tangibles of communications, the Communications Committee acts in a strategic planning role for larger initiatives.

- Complete redesign of the church website at [www.fpcedmond.org](http://www.fpcedmond.org) with the help of Liquid Media
- Updated and redesigned all communications pieces including bulletin, e-news, business cards and letterhead to reflect the "Gather, Grow & Go" mission, one color logo and clean color scheme
- Creation of a Communications Calendar to facilitate better project organization and planning
- Developed and executed communications for Pastor Nominating Committee related to Pastor Eric's call
- Developed and executed promotional campaign for the "All Things New" January 2017 outreach
- Initiated and facilitated an updated church pictorial directory to be executed in early 2017





## FINANCE COMMITTEE

Barry Davis, Chair

Lavaughn Carey  
Bob Carroll

Van Jones, Elder  
Rick McGee  
Ken Rees

Staff:  
Rev. Eric Laverentz (September)  
Dave Moore (December)  
Rick Roberts (until August)

The mission of the Finance Committee is to provide oversight of the church's financial resources. During the twelve months ended December 31, 2016, the Committee accomplished the following:

- We started the year with a surplus of \$157,000 so we were able to authorize a transfer of \$50,000 to the capital maintenance account for repairs and improvements
- Authorized \$30,000 for TV monitors and cameras for the sanctuary
- With the experienced leadership of member Bob Carroll, we reviewed all of our insurance policies and moved all of our coverages to Church Mutual Insurance Company so that we could obtain better service with a local agent
- Authorized the purchase of a 15 passenger Ford Transit van
- Authorized a \$10,000 expenditure out of the tornado relief fund to assist flood victims of a sister church and community in Baton Rouge, LA
- Authorized the payment in full of all of our church debt
- Authorized the salary for Rev. Dr. Eric Laverentz, our new Lead Pastor, and the salary for Dave Moore, our new Executive Director of Ministry Support
- Authorized the 2017 preliminary budget to send to Session under the leadership of Ken Rees who agreed to lead the Stewardship campaign along with co-chair, Chuck Smith
- The 2017 stewardship campaign was a success. We raised just under \$200,000.00 more in pledges than last year. We also received more pledges with a higher average amount per pledge than in 2016

We are all very blessed to be able to serve Our Lord Jesus Christ and our wonderful church family. We look forward to an exciting 2017!



Account	12.31.16 Market Value	Change in Market Value
Building (13.6%)	\$1,699.99	
Christian Life (18.2%)	2,266.66	
Mission/Outreach (18.2%)	2,266.66	
Music/Worship Arts (18.2%)	2,266.66	
Scholarships (18.2%)	2,266.66	
Undesignated (13.6%)	2,000.49	
<b>Total</b>	<b>\$12,767.12</b>	<b>\$0</b>

# FPCE ENDOWMENT FUND

Linda Boyce  
Jim Cahalan  
Lavaughn Carey  
Tim Hopkins

Ed Martin  
Paul Thomson  
David Timberlake

The church endowment program began its first full year of operation in 2016. During the year, the board of endowment trustees devoted their energies to preparing a program of education explaining the role of endowments through which the church can expand the Kingdom of God on earth and ways in which all may join in the effort.

Called “Ways of Giving” the education program was prepared as printed brochures and via the church website. The website also houses a gift calculator that may be used anonymously by donors to estimate benefits to both them and the church for gifts that provide income to the donors.

Six areas of funding were given priority by the Session. They are listed in the chart above. Initial contributions of \$11,000 were made by the endowment board trustees to activate the funds and increased to over \$12,000 by year’s end.

The endowment program is also open to donors wishing to start a fund to support an interest of their own consistent with the church mission.

To learn more about the purpose of the Session funds or to establish a fund of the donor’s interest, brochures are available in display racks within the church building and digitally on the church website. The endowment trustees are also available to discuss any of the programs to interested members.





## 2016 TREASURER'S REPORT

2016 once again showed God's faithfulness in providing for the finances of the church. Receipts for the year were \$2,199,278 which represented 97% of budgeted receipts. Expenses for the year were \$2,145,350 or \$97,350 under budget. This resulted in income for the year of \$44,928.

In addition, we all celebrated the occasion of becoming a debt free church in 2016 as our beginning of the year loan balance of \$747,820 was paid in full and our mortgage was burned!!

The public accounting firm of Bell & Rhodes, P.C. performed an audit of the financial statements as of December 31, 2015 and provided a clean opinion indicating they were presented in accordance with accounting principles generally accepted in the United States of America. Audit work on the December 31, 2016 financial statements will begin in the month of April.

We are continually thankful for the generous and faithful support of our church members.

Rick McGee  
Church Treasurer





## 2016 INCOME & EXPENSES

	Budget	Actual
<b>Income</b>		
Pledged Receipts	\$1,802,414	\$1,820,071
Non-Pledged Identifiable	430,000	343,453
Loose Offering	17,500	16,300
Building Usage	17,500	16,283
Interest Earned	0	27
Other Income	0	3,145
<b>Total Income</b>	<b>\$2,267,414</b>	<b>\$2,199,278</b>
<b>Expense</b>		
ECO Focus Team	38,470	32,176
Missions	218,636	217,022
Music/Worship	25,680	20,802
Kid's Ministry	35,315	22,114
Student Ministry	33,295	31,590
Adult Discipleship Ministry	10,845	7,154
Evangelism/Assimilation	4,400	323
Communications	70,860	70,433
Connections	6,260	10,630
Congregational Care	3,200	1,716
Program Administration	1,378,469	1,314,704
Facilities and Support	426,268	425,686
<b>Total Expense</b>	<b>\$2,251,698</b>	<b>\$2,154,350</b>
<b>Net</b>	<b>\$15,716</b>	<b>\$44,928</b>



## ADULT DISCIPLESHIP

Sheri Stickley, Chair

Don Boyd  
Ruthie Hast

Tim Hast  
Lee Schmidt, Elder  
Amy Schulke  
Ryan Siler, Elder

Karl Stickley

Staff:  
Rev. Jen Howat, Pastoral Liason

The Adult Discipleship Committee seeks to provide all adults in our congregation a rich variety of opportunities to learn Christian faith and practice in relational group settings which prepare and guide them to become fully engaged disciples, making disciples for Jesus Christ.

### Small Group Ministry

This past year approximately 65 people met in small groups in the spring (Feb-May) and fall (Aug-Nov) semesters. Pastor Jen Howat met with small group facilitators several times each semester for a time of sharing and training. She also developed a 12-week small group curriculum called "3G" which provided the opportunity to "Gather, Grow and Go." At 3G people got connected, shared life, reflected on scripture, and were better equipped to "go" after processing the results of a comprehensive survey that helped them reflect on their SHAPE (spiritual gifts, habits, abilities, passion and experience). During this time there was also a period of evaluation of our small group ministry which led to shifting away from semesters and managing groups, to equipping and pouring into people. Our pastoral team developed seven core practices for every small group to integrate into its life. The last quarter of the year was spent developing curriculum for spiritual formation and training of our leaders in preparation to launch our new small group ministry in March 2017.

### Adult Sunday School

Study groups were offered throughout the year with topics covering the core curriculum: Bible, Basic Theology and Doctrine, Spiritual Disciplines, Christian Living, and How to Share Your Faith. Study groups were promoted through the website, social media, the First Look guide, and in the bulletins. The year began with a church-wide study of the book "The Story." Sunday School attendance saw a substantial uptick in January and February, with average church-wide (i.e., all ages) attendance of 369 and 329, respectively. There were many positive comments about how adults, students and children enjoyed being able to talk

# SUNDAY SCHOOL ATTENDANCE STATS

	2015	2016
Winter/Spring	354	291
Summer	197	205
Fall	295	266
Total Annual Average	282	261

## ADULT DISCIPLESHIP

about each Sunday's lesson together, since they were all studying the same topic in an age-appropriate manner. There were three Adult Study Leader meetings during the year, one with new Lead Pastor Eric Laverentz soon after his arrival.

### The Gathering

The Gathering was held on Wednesday nights in the winter, spring and fall and offered a homemade meal, a study group for adults led by Bill Ball, small group meetings, and activities for students and kids.

### Women's Ministry

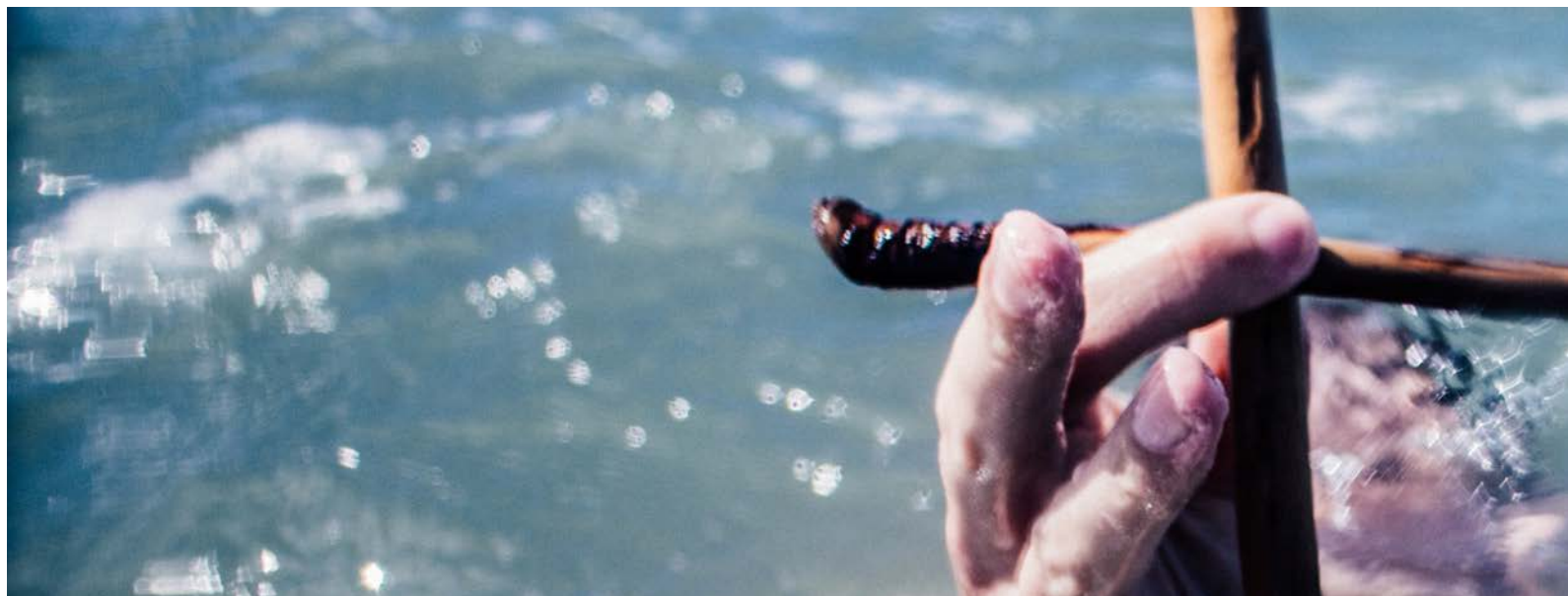
FPCE has a vital Women's Ministry that seeks to provide opportunities for all women to grow spiritually and relationally with Jesus Christ and each other. Our Women's Fall Kick-Off, "The Power of God's Word," featured former Bible Study Fellowship (BSF) Teaching Leader Jodi Muenker. 150 women were in attendance. Our morning and evening Bible studies in the fall and spring included approximately 100 women in the combined studies. Three Circle groups also meet monthly for Biblical study, fellowship and prayer. During the summer we presented a video series as a casual fellowship gathering called "Wednesdays in the Word." The Women's Bible Study groups supported Tenaciously Teal, an organization who provides care packages for cancer patients. \$4,115 was raised and the Women's Bible Study groups participated in packing care packages as our outreach mission project. Monies raised through the Circles' service projects benefit the First Presbyterian scholarship fund.

### Men's Ministry

The Friday Morning Men's group continued its leadership of men and involvement in missions at FPCE. 60 men participated in all sorts of events and activities. A number of book studies were done through the year with volunteer facilitators leading the group. Men from the group volunteer in many ministries and roles. A few men attended the Mo-Ranch PCUSA men's conference in Kerrville, Texas. It was a great relationship-builder. Men's small group Bible studies continued around town and at the church.

(continued)





## ADULT DISCIPLESHIP

### Stephen Ministry

A Stephen Minister is a Christian friend with a caring heart and Stephen Ministry training who will walk alongside those in their care for as long as necessary; while providing the emotional support and spiritual care they need. Stephen Ministers provide care for people who are hospitalized, new parents, people who are grieving, single parents, divorced, victims of disasters, those who are lonely, those in spiritual crisis, unemployed, homebound, and many others. Stephen Ministers receive 50 hours of training and read five books on Christian caregiving. Stephen Leaders take one week of training led by Stephen Ministries of St. Louis.

FPCE has 16 trained Stephen Ministers including 4 Stephen Leaders, and served 10 Care Receivers in 2016. Lavaughn Carey attended training in 2016. Through their one-on-one care, Stephen Ministers have spent over 800 hours of service to Christ. Current Stephen Leaders include: Freda Jones, Ph.D., Richard Woodmansee, Richard Sternlof, Ph.D., Lavaughn Carey, and Pastoral Liaison Reverend Matt Jones.

### Library

The church library is a rich resource of print and non-print Christian materials for our congregation. Its collection continued to grow in 2016 with the addition of new books and Bible studies. Carol Harrison serves as church librarian and Diane Brown assists with many library responsibilities, including opening the library each Sunday morning at 8am. Libby Cahalan maintains patron and circulation records, Michele Baker oversees the Children's Section, and Lark Heins downloads records for the computer catalog. To explore the FPCE Library's wonderful collection from home or office, you can access the Online Catalog by visiting the church website at [www.fpcedmond.org/library](http://www.fpcedmond.org/library) and selecting the magnifying glass icon on the right side of the page. Hours of operation and frequently asked questions are also on the Library page.



## STUDENT MINISTRY

Holmes Fuller, Co-Chair/Elder  
Mark McCasland, Co-Chair/Elder

Kristin Davis  
Kari Gallart  
Charlotte Houck  
Robert Reid

Staff:  
Alyssa Dees  
Brandon Gober (February)  
Lauren Reddout (August)

### GATHER for Worship & Community

Our weekly Wednesday night program called LIFT hosted an average of 46 students with 12 adult leaders. At LIFT, the Middle School Ministry (7-8th grade) and High School Ministry (9-12th grade) gathered together for games, worship and a message. Following the messages, they divided into smaller groups to further unpack the Word. Before students went into worship, they could grab dinner or snacks at The Filling Station. This year The Filling Station received a new vision; all proceeds went to missions. Baked goods, store-bought snacks and freshly delivered pizza were donated by church members which allowed Student Ministry to raise \$844 for missions.

Four student leadership teams were created for students to plug in, lead and love in Jesus' name. Students can engage in the student band, skit team, welcome team, prayer warriors, or gopher team (who spread love outside the church walls). Five students cultivated, crafted and delivered a message at LIFT proclaiming the Good News.

In the summer we focused on defining unique identities for High School Ministry and Middle School Ministry by splitting events up. We had 18 summer events with over 80 student attendees, including 13 first-time guests. We gathered together, from hanging pool-side to swinging clubs at Top Golf, and it built a stronger community.

# GATHER / GROW STATS: STUDENT MINISTRY

Student who call FPCE home	106 students	
Sunday School attendance	49 students	14 leaders
LIFT attendance	46 students	12 leaders
18 Summer events (7-12th grades)	80 students	13 first time guests
Planet Wisdom Conference	11 students	

## STUDENT MINISTRY

### GROW in Intimacy & Understanding

We had 106 students who either claim FPCE as their home church or their families do. This year we worked on identifying our students to truly know our flock and started a Discipleship Program. The Discipleship process is simple; we connected a student with one adult leader who loves Jesus and wants to make Him known. The goal is for the Discipleship leader to show a sincere interest in the student, getting to know their family and letting them into their own life too.

Kari Gallart hosted a high school girls Bible study that met Thursday mornings at Panera Bread. While Andy Fugitt, John Blanks and Brandon Gober hosted a high school guys Bible study on Monday nights.

Our Sunday School classes, including Confirmation, are broken down by grade and averaged 49 students with 14 adult leaders.

In February we took 11 students to The Planet Wisdom conference in Tulsa. We laughed with the Skit Guys and processed the Word with Mark Matlock. This was a fun time in community with each other and strengthened our faith by coming together with the broader Church from different states.

### GO to Serve & Share

With the funds earned at The Filling Station for missions, we were able to support Simon from the Upendo Kids International home in Kenya, Africa.

We did several one-day service projects: our Sunday School classes raked leaves for a widow, students served at the Regional Food Bank, made an art project with the older generation at Grace Living Center, cooked a meal for residents at Oklahoma Disciples Apartments, shopped for and assembled 14 shoeboxes for Operation Christmas Child, and sang Christmas carols to residents at Touchmark.





## GO STATS: STUDENT MINISTRY

The Filling Station Income for Mission	\$844.00
Operation Christmas Child shoeboxes	14
High School missional trip to Ferguson, MO	15 students
Middle School YM360 Generate Mission Camp	10 students
Gave their life to Christ at YM360 Camp	1 student
2016 Confirmation class	22 students

## STUDENT MINISTRY

High School Ministry took 15 people to Ferguson, Missouri, where we widened our world view by serving with various community projects. Our students served meals to those who were uncertain where their next meal would come from and did yard work with various organizations. We connected with churches from Michigan and Wisconsin while learning more about race relations. The trip was unforgettable with many memories made through laughter and sweat.

Middle School Ministry partnered with YM360 Generate Mission Camp in the Lake of the Ozarks, Missouri. We took 10 kids over the summer and served at a facility that is a safe house for abused women and children. Students cleaned the facility, organized toys, weeded and mulched the playground and flower beds, made hygiene kits, and assembled backpacks the new school year ahead. At night we had a top-notch worship experience lead by The Museum and Jason Cook. One student decided to dedicate their life to following Jesus, while others were spurred to make their faith their own.

The search for a new Associate Director of Student Ministry ended in February when the committee joyfully offered the job to Brandon Gober from Kansas. That spring, we began working together to further our mission of being disciples who make disciples through relational ministry. We have enjoyed getting to know our leaders, students and pressing deeper into our jobs in Student Ministry.



## KIDS' MINISTRY

Kathy Martin, Co-Chair  
Judy Strahan, Co-Chair

Jay Buckley, Elder  
Dan Cahalan (September)  
Lindsay Malone (until May)  
Michael Moschak (September)  
Geary Walke, Elder (until August)

Staff:  
Sharon Boecking  
Danielle Herndon  
Jean Wellfare

### Time For Young Disciples

Children gathered on the steps of the chancel each Sunday during both worship services to receive a short devotion teaching them Jesus is calling them. This was just one more layer encouraging them to learn how to develop a relationship with Him.

### Sunday School

Each Sunday during the 9:30am hour, the kids met in their classrooms to learn scripture, Bible stories and lessons, played games relating to their lessons, and shared prayer together. We shifted Kindergarten to join the Preschool. Weekly attendance averaged between 65 and 75 kids.

### Children's Worship

On the last Sunday of the month, children ages 3 years through sixth grade gathered together in Miracle Movies for Kids' Church. This worship is designed specifically for kids! Music, object lessons, hands-on activities, and games are always included. Many times, the Studio56 kids (5th & 6th graders) were an integral part of leadership for this worship service. During the 11:00am hour, after the Message for Young Disciples, 3 year olds through first graders traveled to Creation Station. There, they experienced hands-on learning, art, prayer, and playtime while parents remain in worship



## KIDS' MINISTRY

### Rise

Kindergarten through sixth grade gathered each Wednesday evening for a casual time of worship and music, Bible lessons, games, snacks, and crafts. Often the kids played basketball with the Student Ministry students. Wonderful time! During November, Studio56 took a shopping fieldtrip to purchase items to fill shoeboxes for Operation Christmas Child. December, all FPCE kids, along with Student Ministries, were invited to Christmas carol the retirement community at Touchmark at Coffee Creek.

### Kids Night Out

The first Friday of the Month was offered as a date night for parents of birth through sixth grade kids. The kids were served dinner when they arrived, followed by large motor activities and games. They created art projects tied to the night's theme and closed the evening's activities with a short movie. Kids' Night Out occurred February-May and October-December. This provided six times for parents to enjoy time away from their children for a small fee.

### Summer Sports Camp

We hosted Uncharted Waters Sports Ministry leaders from around the country to lead "The Great Comeback" sports camp. A group of 180 day campers, ages 4 years through sixth grade, attended the week-long experience in June. The kids learned Bible lessons and sports skills through training, songs, object lessons, games, and drills. FPCE supported the leaders with over 80 volunteers from our congregation.

### Vacation Bible School (VBS)

Kids ages 3 years through sixth grade enjoyed the "Barnyard Round-up" theme for a weekday VBS program held Monday-Thursday for one week in June. At VBS the kids entered God's barnyard and learned the 23rd Psalm. We offered worship through music, Bible teachings, active games, themed snacks, and crafts. We filled the church with over 150 kids and 80 volunteers.





## MUSIC MINISTRY

Maggie Martin, Chair/Elder

Jim Bower  
Crystal McGee DePue  
Georgia Fiering

Ann Y. Schmidt  
Julie Schmidt  
Lee Schmidt, Elder

Staff:  
Terry Attebery  
Tom Boles  
Ben Meek

It was a good year in Music and Worship Arts at FPCE. Under the interim leadership of pastors Jen Howat and Matt Jones and Carl Bosteels, the church was preparing for the selection and arrival of a new Lead Pastor. We were not, however, just marking time. All of us as church leaders were focusing on becoming a Simple Church, with the goal of being constant in reaching people beyond our walls with the love of Jesus. In worship we strove, as always, to pour out our hearts and to allow God to change us by His presence - to give Him our deepest and highest praise.

Our Holy Week services were full of joy and gratitude beginning with Palm Sunday. On Maundy Thursday Rev. Jen Howat led a time of reflection on Jesus' last supper with his friends and led us in sharing communion around a table as close friends would do. The choir led by Jim Regin gave a moving rendition of John Rutter's Requiem on Good Friday evening that ushered us into prayer and deep reflection on Christ's love and sacrifice. Easter was a wonderful day of celebration, and the congregation enjoyed the beauty of the flowering cross.

Jim Regin departed mid-year for other opportunities. We felt his loss but renewed our desire to give our best in worship. In July, True North held a retreat led by Rev. Matt Jones where they discussed seeking opportunities to connect with young musicians and to be available to mentor them as opportunities might appear. With the insightful help of Tyler Boren they began making those connections, and will continue to do so with the help of Tanner Dees and others, now that Tyler also has moved on.



## MUSIC MINISTRY

Terry Attebery took over the role of Worship Choir Director in June 2016. The worship Choir sings at the Traditional and Contemporary Worship services. The choir has been welcoming new and returning members and numbers 50 plus when all are present.

We presented the story of Jesus' birth, life, death and resurrection in the dramatic presentation of "One Incredible Moment" in December, for four evenings to a near full house each evening. We had approximately 115 participants from several different churches and students from Oklahoma Christian University. The participants ranged in age from 5 to 85. The entire church helped make this ministry possible.

We continue to be blessed to have the talents of Jim VanHemert at the piano and organ.

The Chancel Bells continue to be a vital part of the music ministry. This season we welcomed several new members.

The music ministry continues to be strong and in prayer for our church and the search for the new Minister of Music and Worship Arts.

It has been a true blessing to work and worship with these loving and dedicated people. We pray that God uses us in a mighty way to spread His word through music.

All of us in worship leadership are still evolving and seeking to be better musicians and better leaders. We feel every week how good it is to worship with all of you and to feel the blessing of your prayers for the church and for us. Thank you. To God be the glory – great things he has done!



## GO / MISSION

Tom Langdon, Chair

Bill Allison, Elder  
Dale DePue  
Alyssa Ewing

Kevin Ewing  
Kristy Farrell  
Cheri Fuller  
Megan Heine  
Faith Koester

Robert Menja

Staff:  
Sharon Boecking

### Local Missions

Many members volunteered and the congregation supported ministries that gave food to the hungry, clothing to those in rags, and visited the lonely. Prisoners read stories to their children and our people filmed them and distributed those films to their children. Grade school children were mentored. Shut ins were brought to church and were fed.

### Sharing the Good News

Missionaries went out from our church into the USA and eight other countries to spread the Gospel to orphans in Kenya, businessmen, Arab youth, American and Asian high school and college students, and African subsistence farmers. We supported two seminaries in Africa, one dedicated to training Arabic speaking pastors, the other training pastors in the deep rural areas of sub-Saharan countries.

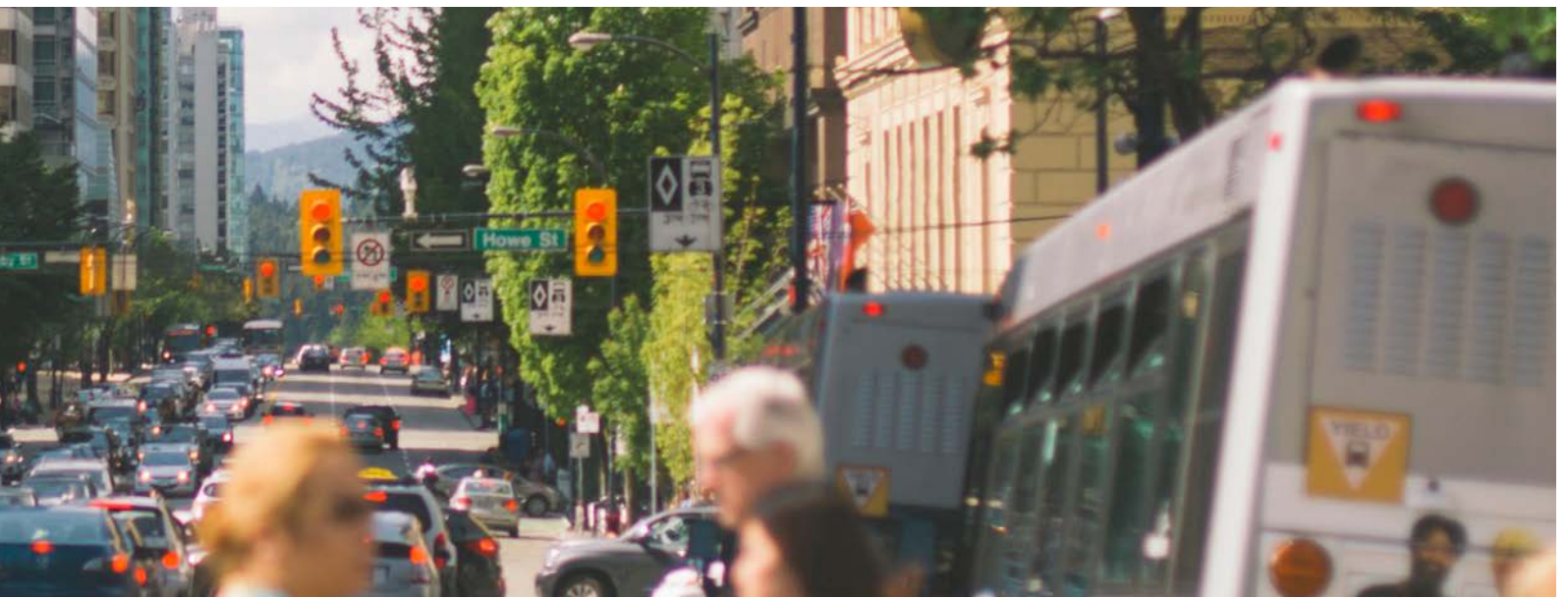
### Development

Houses were built in Edmond to provide a start for several families who needed a boost to home ownership. The New Church and pastor's house were built in the mountain village of Shisinyo, Uganda followed by the start up team from FPCE who walked the trails of the village, shared the Good News and preached the Great Crusade. The Covenant Secondary School was given a new building and computers loaded with American curriculum.

### Volunteer Coordinators

This year the GO Team sponsored the creation of two part-time Volunteer Coordinator positions who connect our members with our missions so that we can GO to Serve and Share. During the year eleven of our members were in full-time mission work.





## TROOP, CREW & PACK 78 [BOY SCOUTS OF AMERICA]

The Boy Scout organizations chartered to the Church have been very active and have concluded another successful year.

Troop 78 has completed its 86th year of service to the church and the community, having been continuously chartered to the First Presbyterian Church of Edmond since 1931.

Robert Reid continues to serve as the Charter Organization Representative for the Troop, the Pack and the Venture Crew (a co-ed, high-adventure scouting group for youth aged 14 to 21). David Bailey continues as the Committee Chair for Troop and Crew. Jeff Wyrick serves as the Cubmaster and the Committee Chair for the Pack. Dr. Dallas New continues as the Scoutmaster of the Troop and Tom Rossiter continues as the Advisor of the Venture Crew.

2016 began with Gus Cook serving as Senior Patrol Leader of the Troop. Matthias Gruen took over from Gus in February and served until August when he turned over the reins to Nate Blasdel. Ben Edwards now serves as Senior Patrol Leader, having just been elected as Senior Patrol Leader in February. The Troop currently has 40 youth. The Pack ended the year with 44 youth. The Venture Crew ended the year with 12 youth.

The Troop is planning a 50 mile backpacking trip in Colorado this summer. The Venture Crew is also planning a 50 mile backpacking trip this summer along the Lake Superior Trail.

Twelve Scouts earned the Eagle Scout rank in Troop 78 in the past year: Austin Martin, Keegan Leibrock, Austin Warnock, Gus Cook, Cole Deaver, Luke Deaver, Will Stressman, Jack Stressman, Kyle Gage, Matthias Gruen, Bryce Johnson, and Jason Chandler. Three hundred and forty-eight youth have now earned their Eagle Scout rank with Troop 78 since 1931.

And finally, at the beginning of 2017, the Celtic Cross award was presented by the church to Mark McCasland.

THANK YOU for your support in 2016 and we are looking forward to a fun and successful 2017!

## INCOME

Tuition & Fees	\$477,675.31
Parents Group/Fundraiser Income	22,644.34
Total Income	<u>\$500,319.65</u>

## EXPENSES

Payroll & Payroll Tax	\$408,727.31
Classroom Equipment	5,085.65
Building & Equipment Repair	5,488.97
Classroom Supplies	14,009.70
Office & Administrative Expenses	3,985.72
FPCE Nursery Reimbursement	1,258.74
Curriculum & Prof. Development	3,436.14
Playground Maintenance	3,499.09
Activities & Events	3,617.01
Parents Group/Fundraiser Expenses	21,264.04
Total Program Expenses	<u>\$ 61,845.06</u>

Net Income 2015-2016 School Year **\$29,747.28**

# EARLY CHILDHOOD PROGRAM [ECP]

Danielle Herndon, Chair/Elder

Kristin Emerson  
Paula Jones

Staff:  
Mary Singleton  
Rev. Matt Jones, Pastor Liason

Cora Boyd  
Jim Cahalan

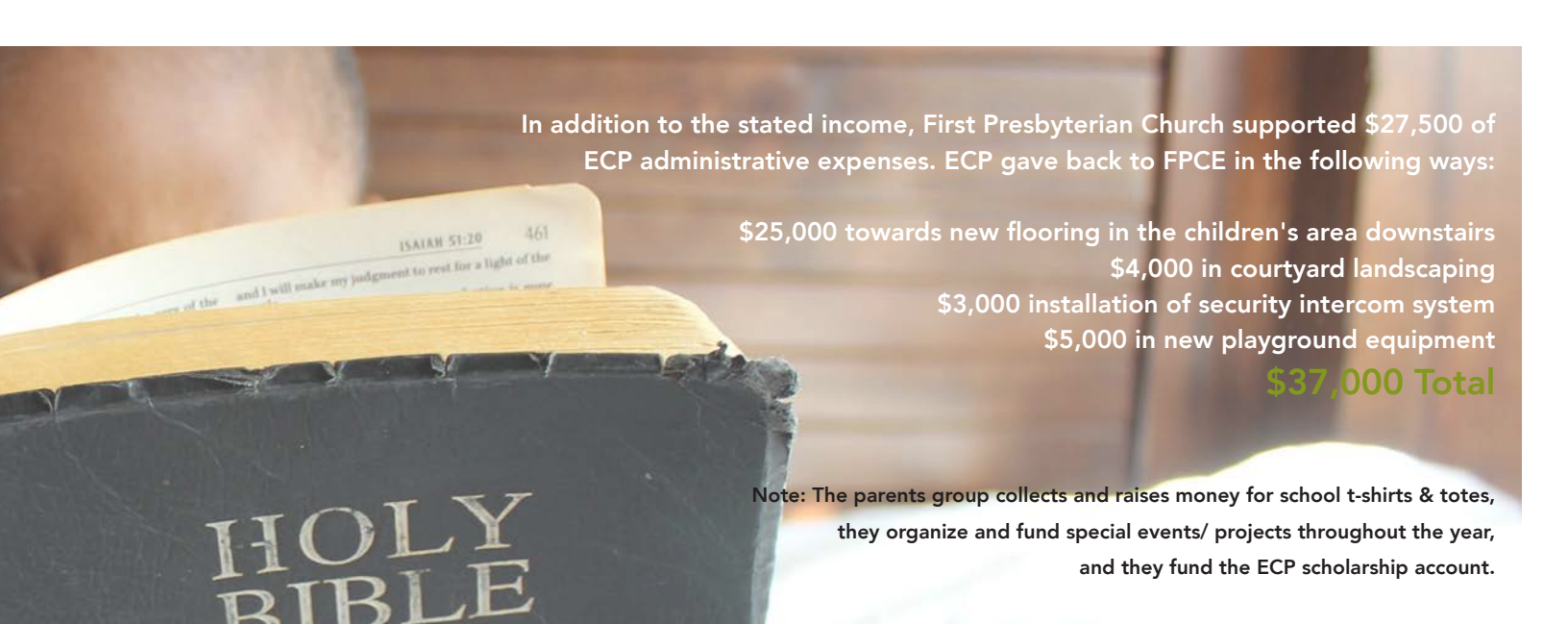
The Early Childhood Program (ECP) Staff, Committee and Parent's Group worked together to ensure that ECP needs were identified, discussed and handled appropriately. ECP is funded through student tuition, and with surplus and additional raised funds, ECP is consistently able to help acquire and maintain classroom and outdoor equipment. Scholarship funds are available and awarded as needed. The ECP is licensed by the Oklahoma Department of Human Services. All staff participates in a minimum of 20 hours per year of continuing education and maintains current CPR and First Aide certification. The First Presbyterian ECP employs and supports 28 educators who have a love for God and share that love with approximately 215 children currently enrolled from 1 year of age to 6 years of age. The majority of our teachers hold a college degree, most in the areas of Early Childhood Education or Elementary Education.

In 2016, the ECP began examining its programs through the lens of the "Gather, Grow, Go" model of the church.

## ECP GATHERS in worship and community

ECP is an opening to the church, and more importantly, an opening to the Christian faith for many of our families. At least 20% of our families come to us with no church affiliation and many others come with only a loose affiliation elsewhere. Activities were purposely planned to allow families to gather in worship and community and provided opportunities to build friendships that often last a lifetime.

- Back to school picnic to welcome new families
- "Donuts with Dads" and "Muffins with Moms"
- Festifall: annual fundraiser/ carnival and a fun night of community and fellowship for our families
- Thanksgiving Family Worship and annual "Tasting Feast" including participation from the church staff
- Invitations to church events
  - 50% of children at FPCE's 2016 "Sports Camp" came from ECP
  - 40% of children at FPCE's 2016 "VBS" came from ECP



In addition to the stated income, First Presbyterian Church supported \$27,500 of ECP administrative expenses. ECP gave back to FPCE in the following ways:

\$25,000 towards new flooring in the children's area downstairs

\$4,000 in courtyard landscaping

\$3,000 installation of security intercom system

\$5,000 in new playground equipment

**\$37,000 Total**

**Note: The parents group collects and raises money for school t-shirts & totes, they organize and fund special events/ projects throughout the year, and they fund the ECP scholarship account.**

## EARLY CHILDHOOD PROGRAM [ECP]

### ECP GROWS in intimacy and understanding

- ECP children attended a weekly "Bible Time" Chapel where they experienced relevant worship and heard Bible stories through the use of skits, puppets and more. Teachers reinforced those stories throughout the week. In addition, special events were scheduled throughout the year to reinforce all of this. A yearly favorite is our Christmas "Birthday Party for Jesus" where Santa made a showing to tell the children the nativity story and children got to visit live nativity animals in a petting zoo at the school.
- ECP teachers met each morning before school began for devotions and prayer, and they supported each other as if they were family.

### ECP GOES to serve and share

To the ECP families:

- ECP partnered with parents as they raise their children in faith and prepare to send them out into the world into traditional school.
- ECP provided a quality early education experience for children which is regularly recognized as a top choice school as evidenced by waiting lists.
- ECP networked with community support systems to offer resources to our students at no additional cost. The UCO Speech and Hearing clinic tested all preschool children for speech and hearing delays, and Prevent Blindness conducts vision screenings for every child in the school yearly. In addition, ECP helped parents of children with special needs identify resources within the community to assist as necessary.

To the church:

To the FPCE community and greater Edmond/OKC community:

- Installation of a security intercom system
- Landscaping of the interior courtyard
- Updates including a new playground sidewalk and installation of new equipment on Children's Day Out playground
- New flooring in the children's area of the church
- Improvements to classroom furnishings and maintenance of all existing furnishings in the children's area
- ECP held a significant donation drive for Infant Crisis Center





FIRST PRESBYTERIAN  
CHURCH OF EDMOND

*being disciples...making disciples!*



## FIRST PRESBYTERIAN CHURCH OF EDMOND

1001 South Rankin Street | Edmond, Oklahoma 73034 | 405.341.3602

[www.fpcedmond.org](http://www.fpcedmond.org) |

