

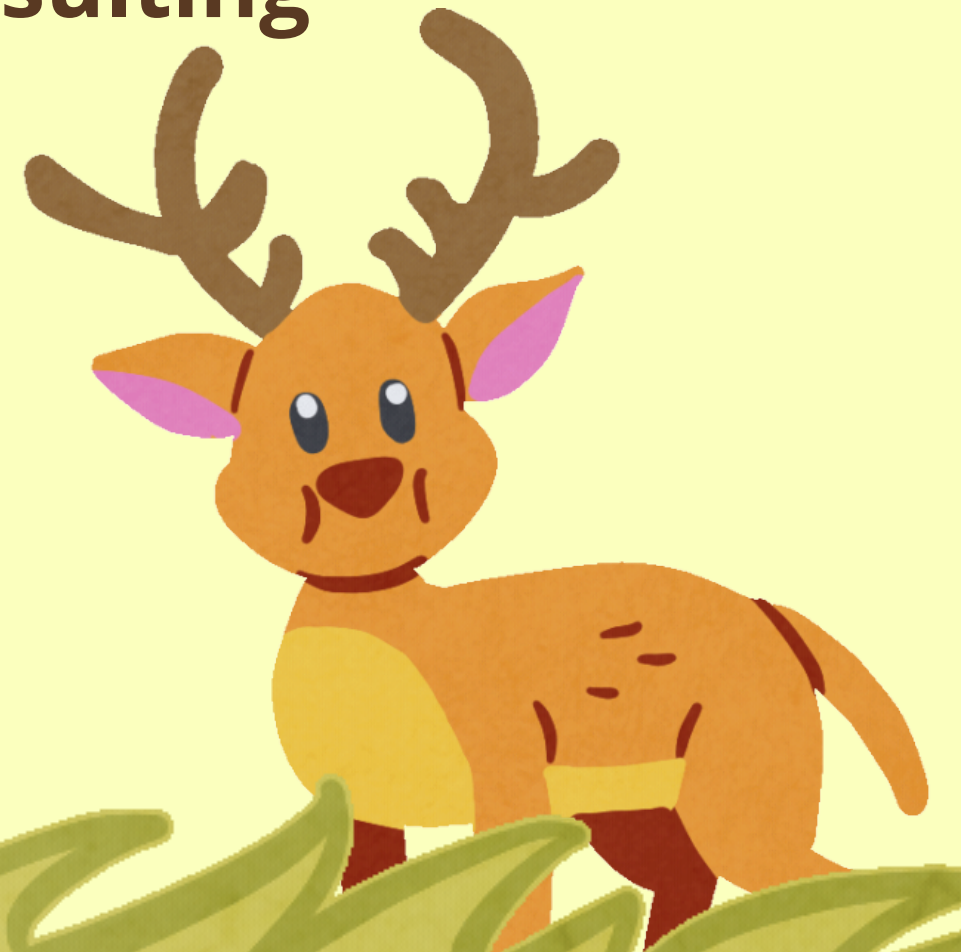
WELCOME



LEARN TO PLAY WITH ABA

PRE-K

Grand Valley Behavior; Services and Consulting





OUR PRESCHOOL...



- is safe, fun, and inviting.
- fosters curiosity and a love of learning.
- supports active learning that is meaningful to the child.
- includes 1 to 1 support to promote successful peer interactions.

WHAT IS PRE-K ABA?

Pre-k ABA is our way of combining an understanding of how children develop and learn with how to effect change in ways that will be meaningful for accessing social relationships, knowledge, experiences, and, ultimately, an ability to get needs met.

In other words, we use ABA principles, chosen based on each child's unique needs and guided by developmentally appropriate practice, to support skill acquisition, reduce challenging behaviors, and establish a foundation for lifelong learning.

WHAT IS ABA?

Applied Behavior Analysis is "a science devoted to the understanding and improvement of human behavior."

WHAT IS BEHAVIOR?

Behavior is anything people do that can be observed and measured, good or bad.

To support quality experiences our program is...

HANDS ON




ENGAGING



FUN



The background features stylized trees and foliage. On the left, there are several trees with green, orange, and brown foliage. On the right, there are more trees with green and orange foliage. The overall style is modern and illustrative.

How is our program unique?

- We respect each child as an exceptional and capable individual.
- We provide daily indoor and outdoor play, community outings, and in home coaching sessions to support growth.

- We use Intensive Applied Behavior Analysis with the Colorado Early Learning and Development Guidelines, which align with the Colorado Academic Standards for preschool.

- We provide a safe and engaging environment to establish a foundation for a lifetime of learning.

PRE-K WITH ABA

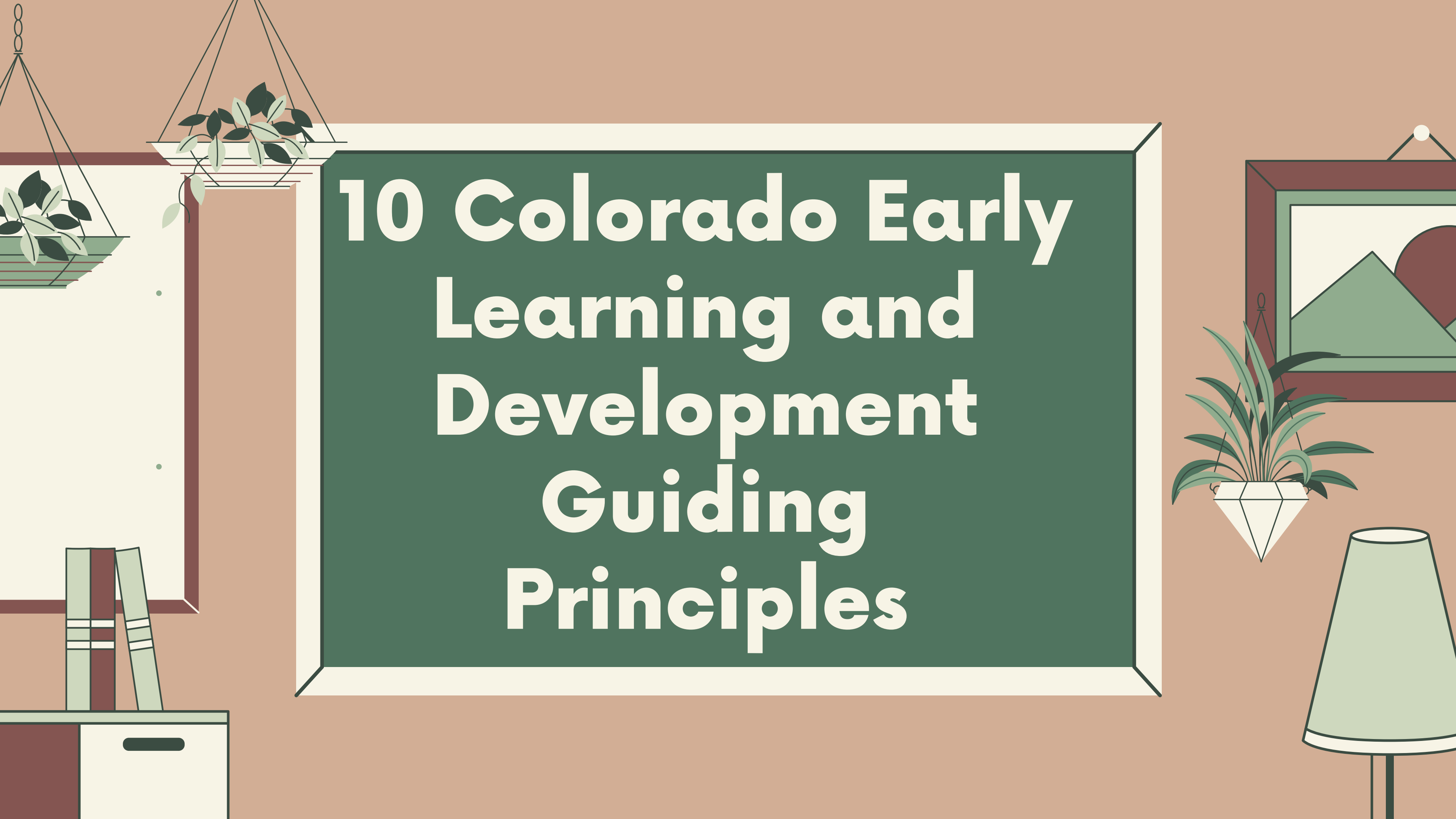
- 8:30 AM Arrival
- 8:50 AM Greeting circle
- 9:00 AM Free play with ABA
- 10:00AM Group snack
- 10:15 AM Independent skill practice
- 10:30 AM Free play
- 11:30 PM Group lunch
- 12:00 PM Activity circle
- 12:10 PM Outings or In home
- 2:30 PM Goodbye

DATES

- M, W, F Center all day
- T, Th In home, part day
- S (optional)

REQUIRED SUPPLIES

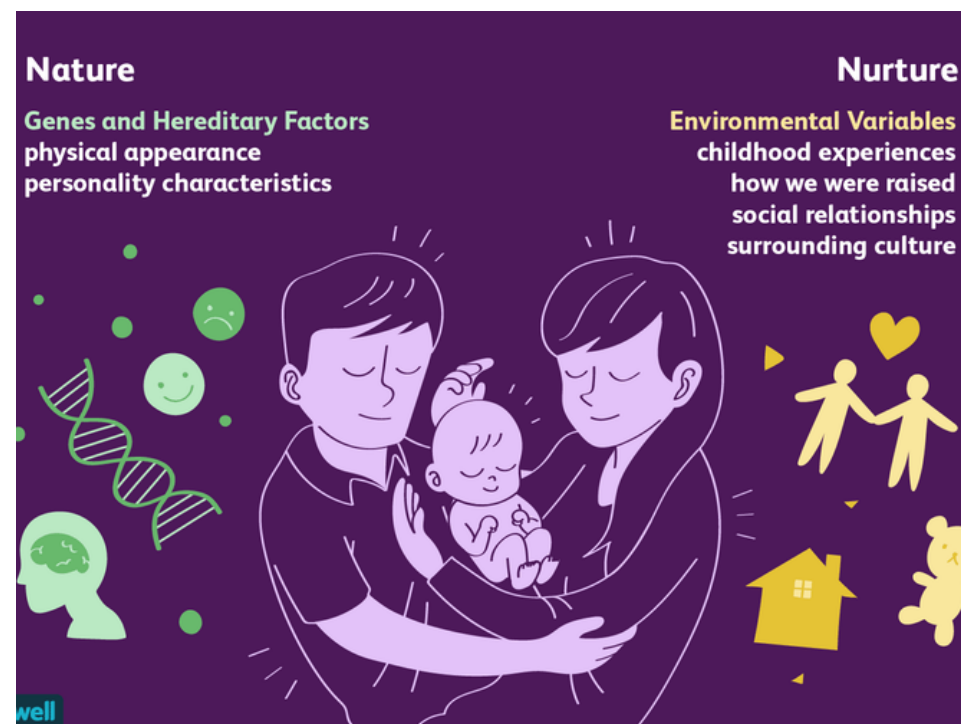
- weather appropriate clothing
- lunch
- personal items

The background is a warm, light brown color. In the center is a large green chalkboard with a white border. To the left of the chalkboard, there are two hanging plants with green leaves. Below them, on the left edge, are two books standing upright. To the right of the chalkboard, there is a framed picture of a mountain and a sun, a potted plant with long green leaves in a white diamond-shaped pot, and a green lamp with a white base.

10 Colorado Early Learning and Development Guiding Principles

Nature, nurture, culture, self-regulation

Nature and nurture affect children's development.



Culture, your beliefs, traditions, and practices, influence every aspect of your child's development.



Self-regulation, learning self-control, is a foundational part of early childhood development.



Exploring, growing, changing, building relationships

Children are active participants in their own development, with a natural drive to explore and master their own environment.



Relationships are the building blocks of healthy development.



There is a broad range of individual differences among young children.

Each child's developmental path is characterized by continuities and discontinuities, as well as by a series of significant transitions.



Vulnerability, strength, experience, intervention

Human development is shaped by the ongoing interplay among sources of vulnerability and sources of resilience.



Early experiences matter but a developing child is vulnerable and influenced throughout the early years of life and into adulthood.



Early childhood development can be altered by effective interventions.



Early Intensive Behavior Intervention

We use EIBI within preschool and daily routines

Early Intensive Behavioral Intervention (EIBI), a comprehensive behavioral treatment based on the principles of ABA, is an established practice shown to increase communication, higher cognitive functions, play skills, interpersonal skills, personal responsibility, and motor skills of individuals with ASD, in addition to decreasing problem behaviors and general symptoms associated with ASD (NSP2, 2015).

