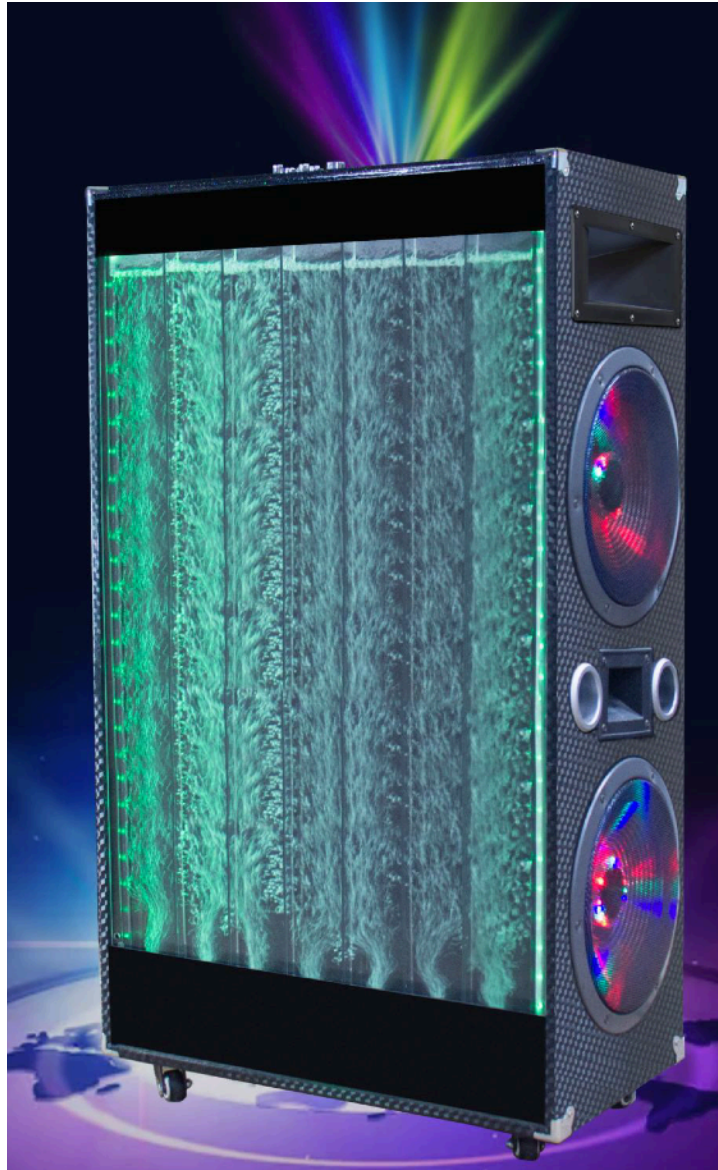


SH-161B

ENGLISH



READ BEFORE ADDING WATER

HERE IS WHAT YOU NEED:



Scissors
(Not Included)



2.5 Gallons of Purified Water.
(Not Included)

WARNING: Using non purified water can cause the PVC to stain overtime.



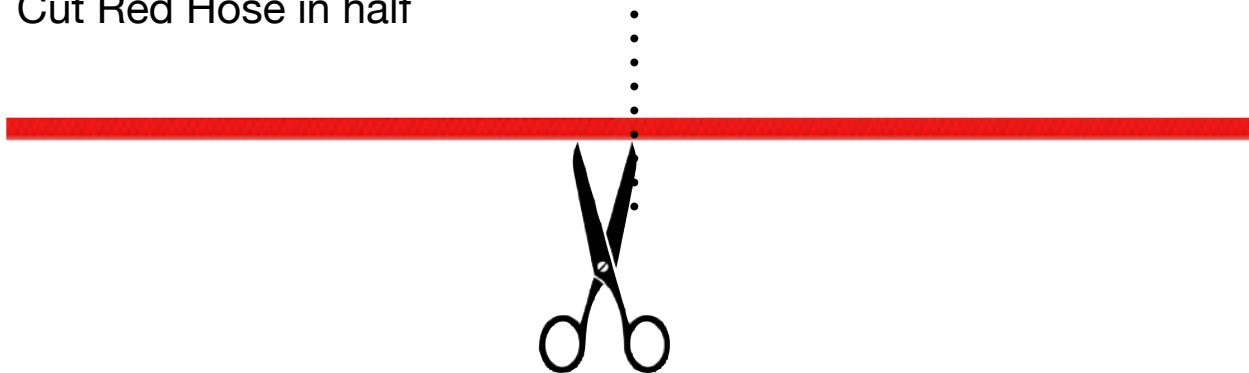
1pc Water Pump/ 1pc Red hose
(Included)



AC power cord/ LED control/ Speaker Control/ Wireless Mic
(Included)

.....
Step 1.

Cut Red Hose in half



Step 2.

Once you've cut the Red Hose in half, insert the end of each hose to the water pump inputs like picture below.



Step 3.

Before you continue make sure speaker is off, open the black opening flap located in the bottom front of the speaker. Inside you should see the metal shut off valve pictured below. Make sure it is in a closed position before inserting the water.



Closed Valve

(Will prevent water from draining)

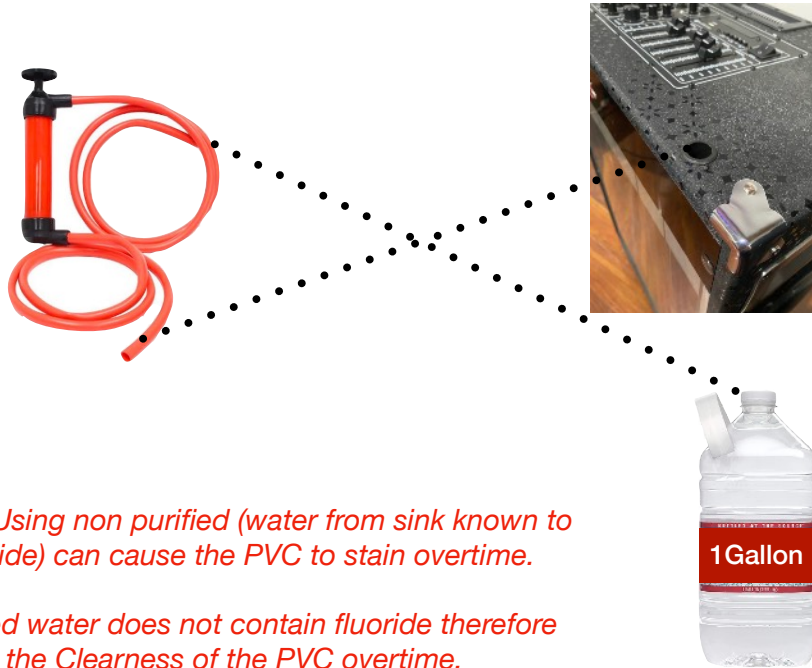


Opened valve

(Will drain water)

Step 4.

While holding the pump upright like the picture bellow, insert the bottom hose into the front right corner of the water fountain speaker. Then insert the top hose into a water gallon and begin to pump water inside the speaker.



WARNING: Using non purified (water from sink known to contain fluoride) can cause the PVC to stain overtime.

Using Purified water does not contain fluoride therefore will preserve the Clearness of the PVC overtime.

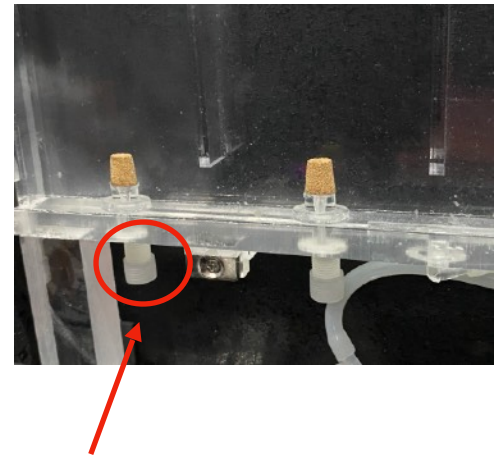
Continue to fill until you reach the black cover. Do not fill all the way to the surface this could cause it to overflow and can cause water to enter the control board.



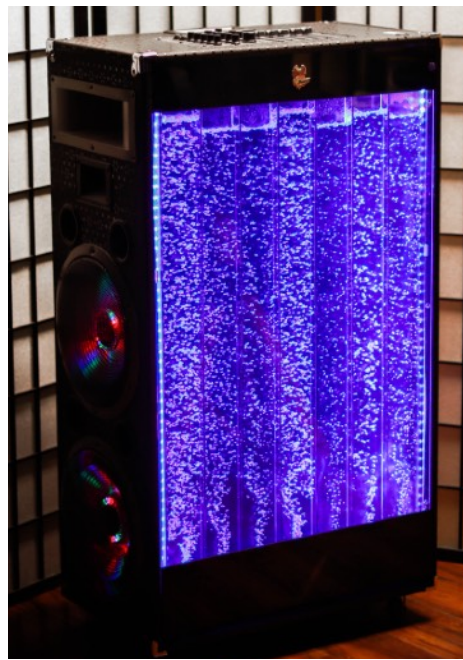
Allow water to reach this Point.

Step 5.

Connect AC cord to Speaker and to a power source. Once plugged in there is an LED switch found in the back, turn ON and the water fountain will begin to bubble upward.



IF you turn on and you see some bubbles are thinner than the others , open the bottom flap once more and twist the water jets to tighten or loosen the flow of the water.



Using the LED control remote you can select a specific color or transitions for the fountain , as pictured above .
MAKE SURE TO POINT CONTROL TO THE BOTTOM RIGHT CORNER OF THE SPEAKER.



LED ceiling lights

AUX input

1 Guitar input
Guitar volume

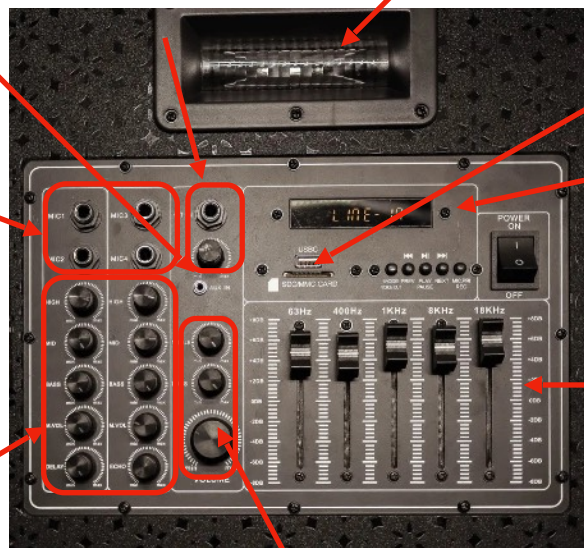
USB/SD card inputs

4 Mic Inputs

LED function display

Power Switch

Equalizer



Microphone
High/Mid/Bass/M.VOL/Echo

Master Volume/Bass/Treble



1. Power ON

When turned on, the LED screen will Read LINE-IN



AUX



WIRELESS



FM RADIO

Functions/Modes:

1. **LINE-IN mode**- Use this mode when you want to plug your aux cable, and connect your Phone/MP3 player/ Tablet/Computer/TV or any other sound devices.
2. **OPEN mode** - Connect to your Phone/Tablet/Computer/Other WIRELESSLY. Go to your Device's Settings and select Bluetooth, Search devices and select Iphoenix speaker, once connected you can play your music wirelessly.
3. **RADIO mode**- Select this mode to play FM radio. Must scan stations before using this mode. To Scan stations press the *PLAY* button and let the scanning finish before using the *Forward* and *Backward* buttons to move between stations.
4. **USB/SD CARD function**- While on any mode, insert a USB/SD card with music/sound and it will automatically read it. The USB and SD card inputs are for reading music ONLY. Make sure your music is in MP3 format before inserting. This speaker will not read any other sound formats. USB will not work to charge or connect to your Cellphone device.
5. **MIC priority function**- By turning Mic priority ON , Music playing on the speaker will be interrupted and muted until you finish talking on your microphone. By turning Mic priority Off you will be able to sing or talk along with the music.
6. **Recording function**- Insert a USB/SD card and connect a microphone , Once plugged in you can select the REC button and begin recording sound, Press the REC button once more to stop recording. To hear back the recording remove USB or SD card and insert again use the *forward* or *backward* button to find recording.