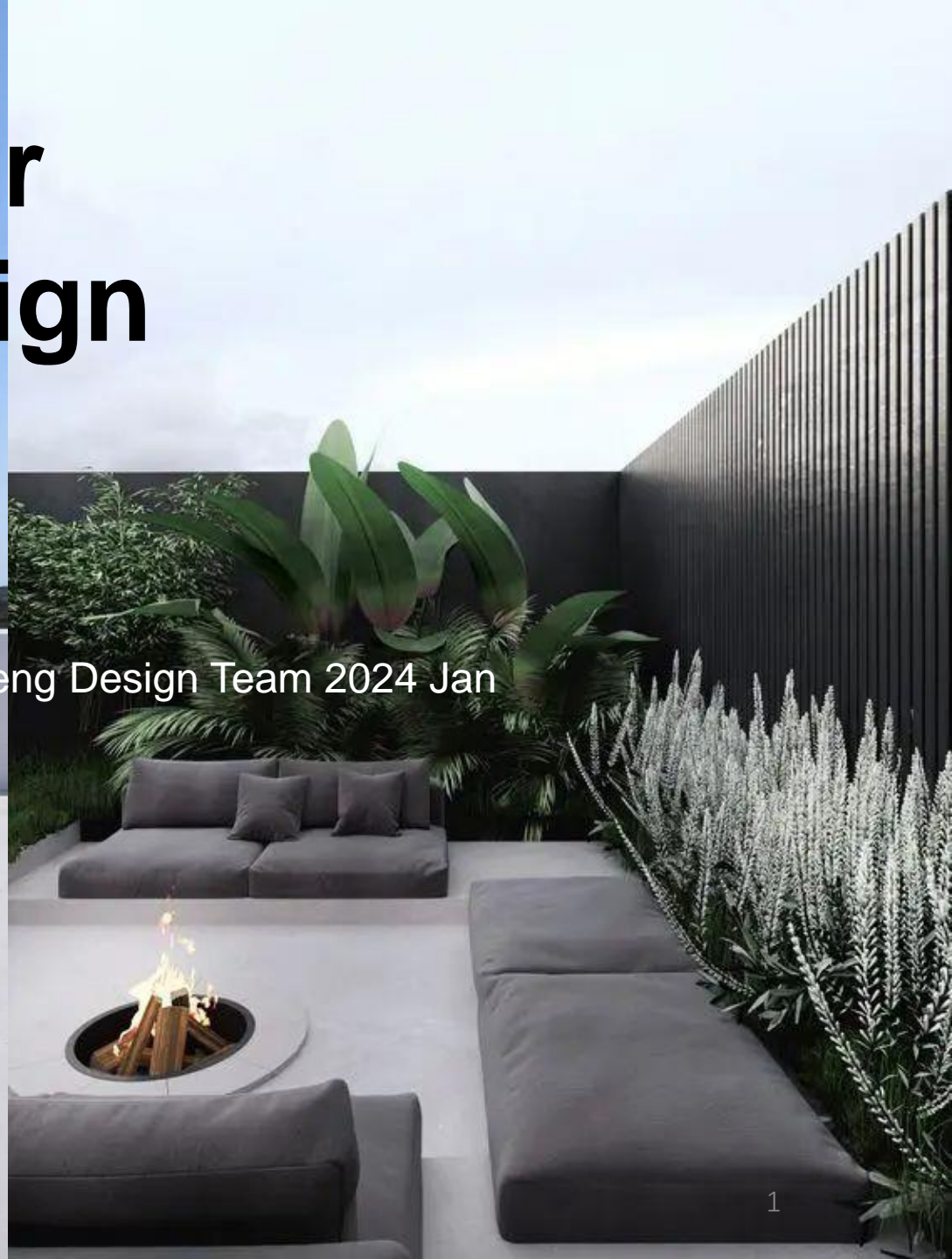


# Mid-Season Outdoor Inspiration and Design Sharing



Huacheng Design Team 2024 Jan





**Maldives** – the name itself evokes visions of holidays, outdoor bliss, and relaxation. Picture small round jewels in crystal waters, floating freely amidst a splash of green and vertical landscapes.





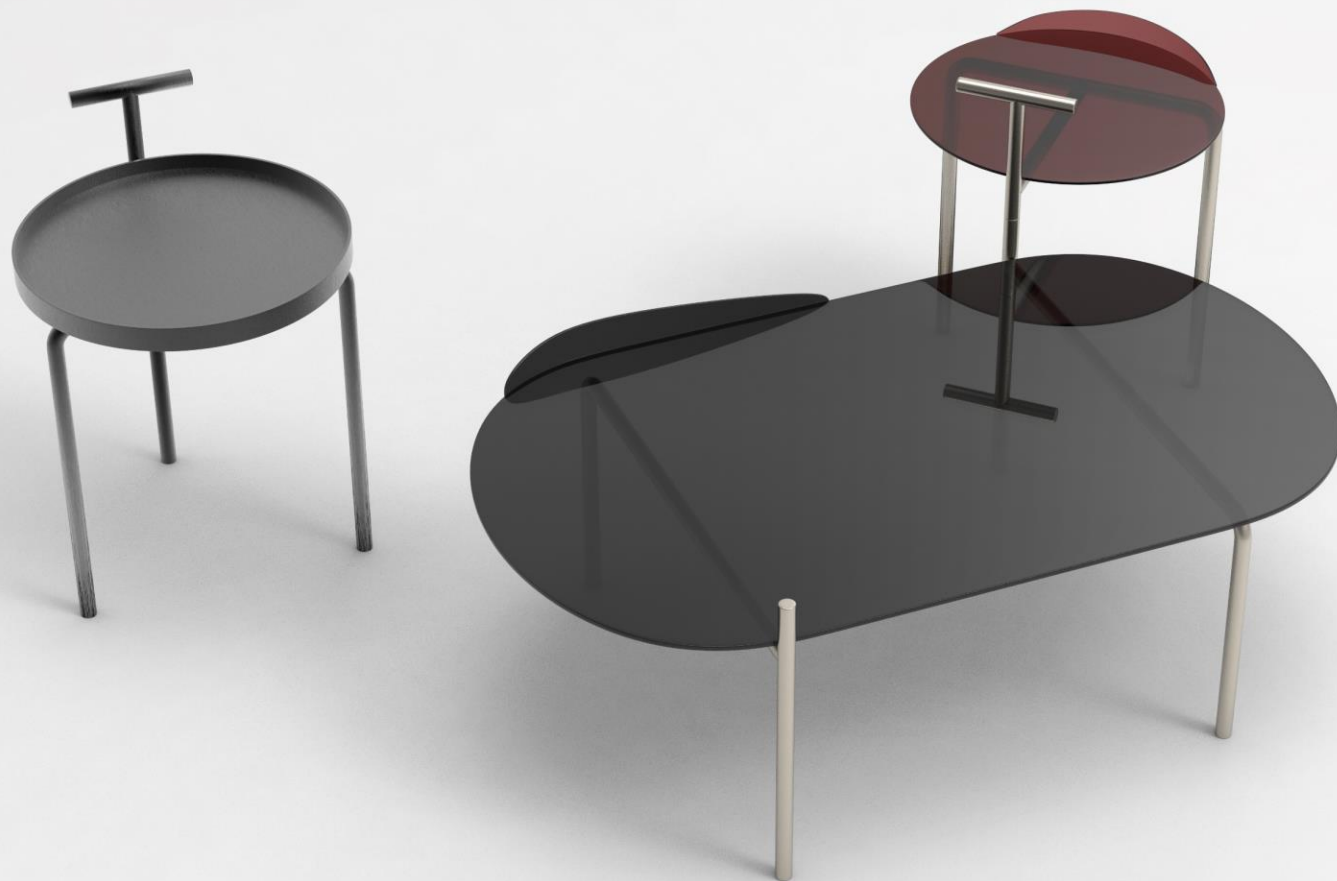
'The floating Big'  
'The floating Small'  
'The floating Together'

We're all about simple materials creating a sleek design with loads of details and functionality. The tabletop's got a cool raised edge to keep things in check, giving off those safe and chill vibes. No unnecessary fuss with metal tubes – we just bend them to skip the extra work. And hey, our side table's got a handy little handle for easy moves. The nested tables? They share a leg for that solid vibe, and you can turn the small one any way you like. To top it off, we've got powder coating, heat transfer, and a mix of colors for a design that's versatile and just plain fun.



















**Terrace**, in its authentic essence, resembles the image above—a fusion of nature and human craftsmanship. Admittedly, it bears not just a few but numerous human touches, or to be more precise, labor of love.





Confidential Use

## Terrace

Resemble &  
Remind







We're aiming for a design where one laid-back table does the job of a nesting table, nailing both function and looks. It's got that cool step-down style for a smoother vibe. The ceramic surface is a breeze to keep up and tough as nails. Plus, the combo of a wire basket and metal cover gives you extra space to toss things while keeping it all neat outdoors.





Imagine this: a heavenly slice of **Medovník** – that's our designer's ultimate pick for a delightful Saturday coffee treat! Inspired by this traditional Czech honey cake, she couldn't help but envision an incredible beehive, sparking her well of creativity.







The hexagon shape is not just for looks – it's perfect for nesting and stacking, throwing in a splash of vibrant colors for some serious fun! Keeping things simple, rounded edges for safety, and curved tubes for those smooth outlines. You can go all in with the same height or mix it up with big and small, high and low – it's unpredictably ordered, and oh, so good!





**Thanks and  
How can we  
Assist you?**