



TASSIMO

suny

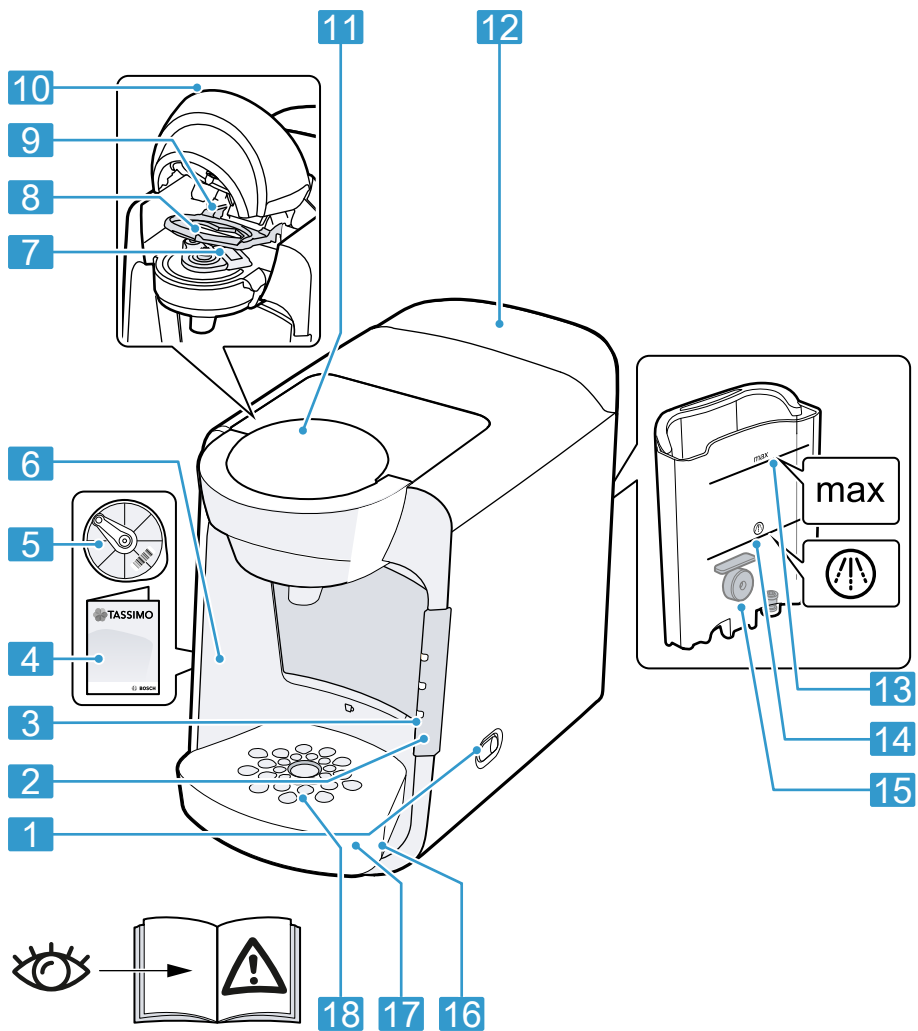


TAS3xxx

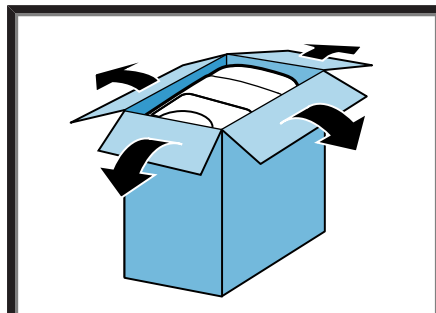
de Gebrauchsanleitung
en Information for Use
fr Manuel d'utilisation
es Manual de usuario
el Εγχειρίδιο χρήστη
pl Instrukcja obsługi
cs Návod k obsluze
sk Návod na používanie
ro Manual de utilizare



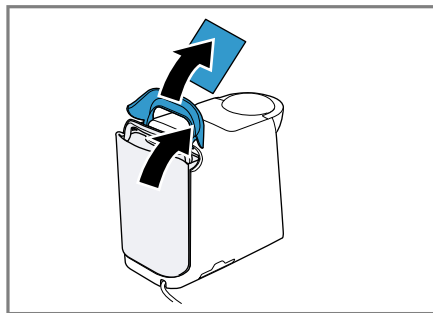
BOSCH



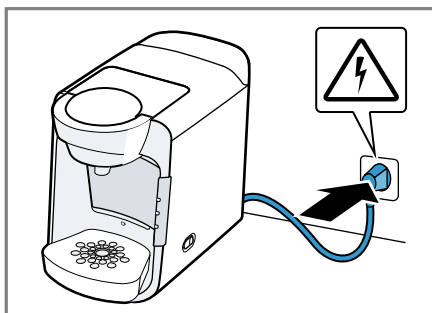
1



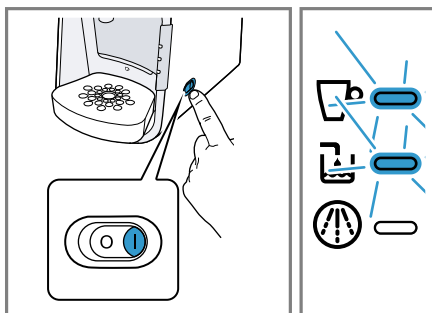
2



3



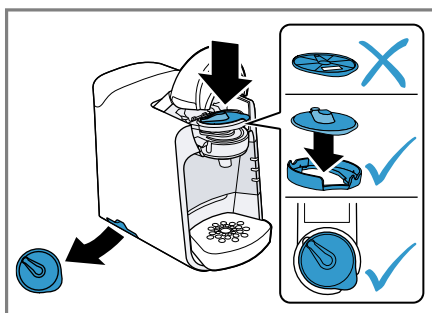
4



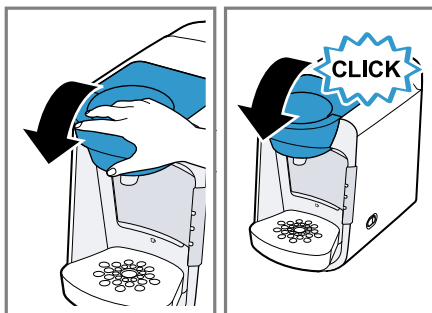
5



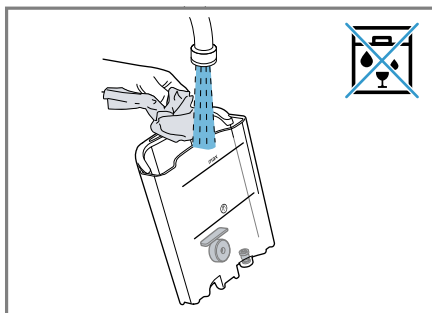
6



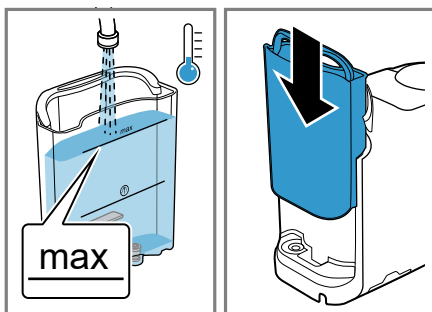
7



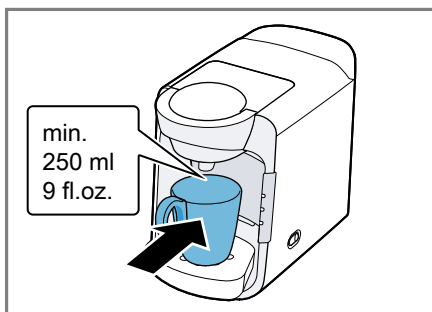
8



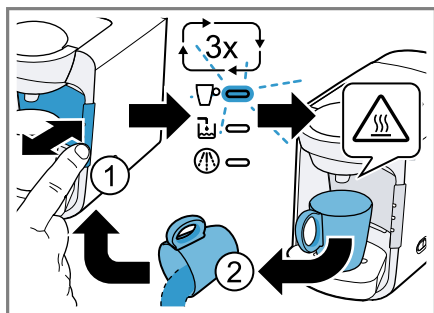
9



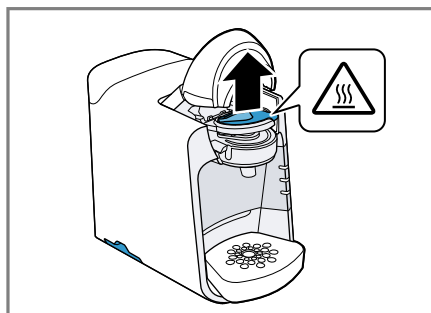
10



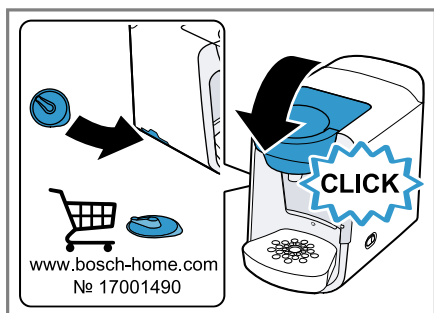
11



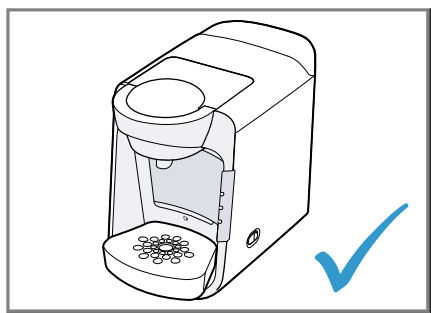
12



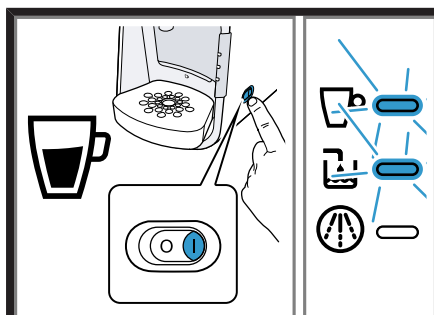
13



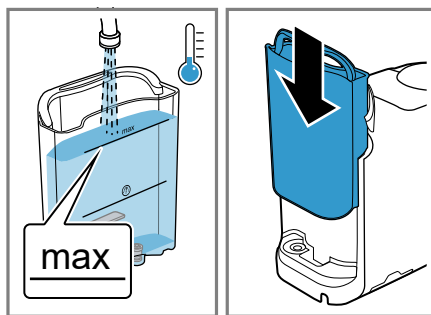
14



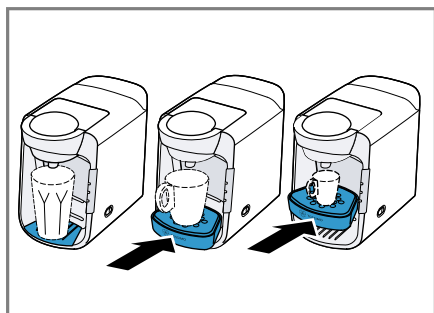
15



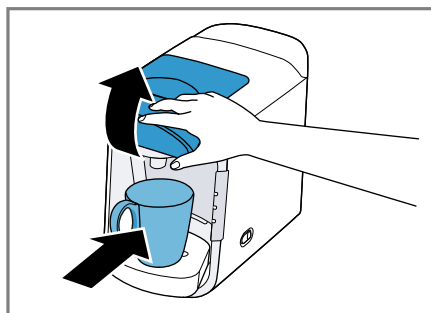
16



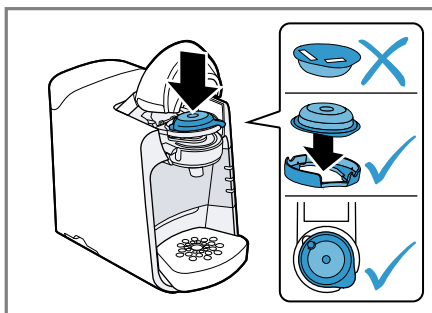
17



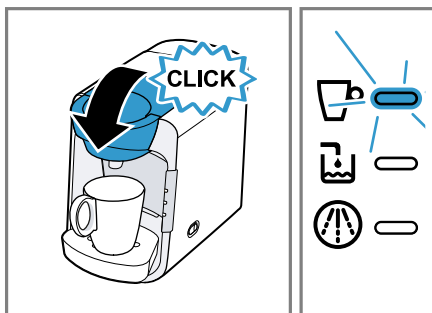
18



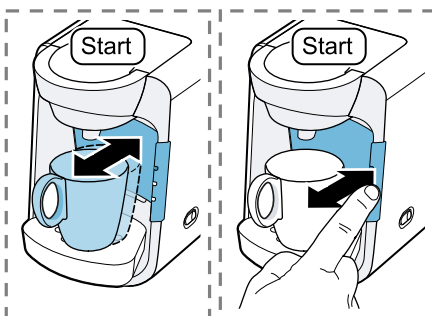
19



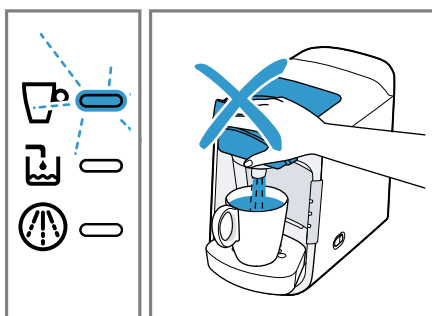
20



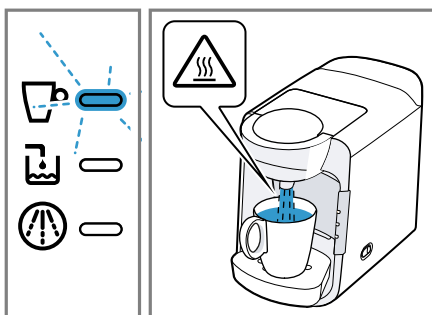
21



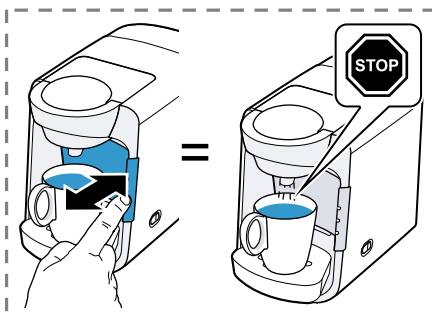
22



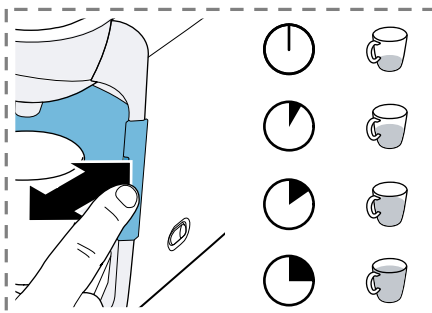
23



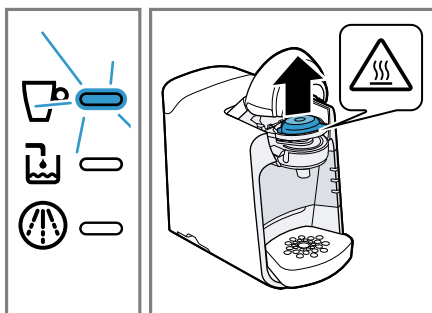
24



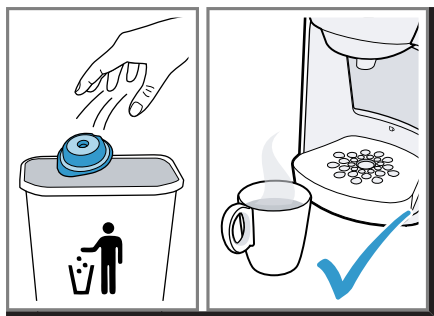
25



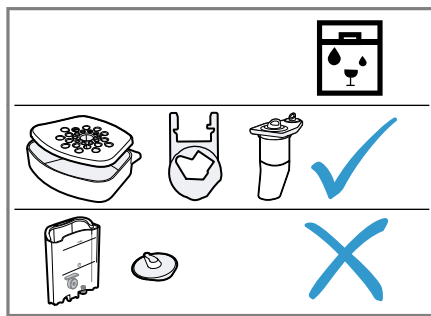
26



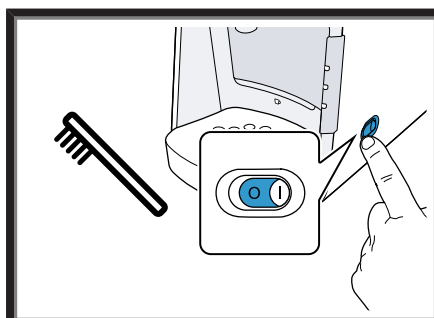
27



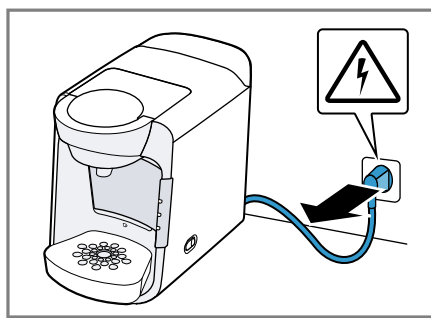
28



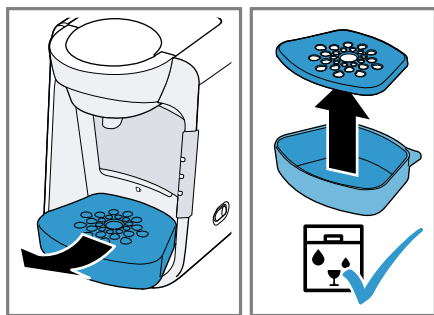
29



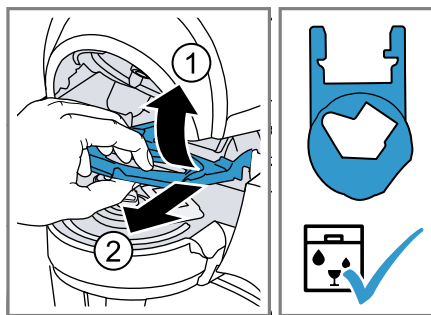
30



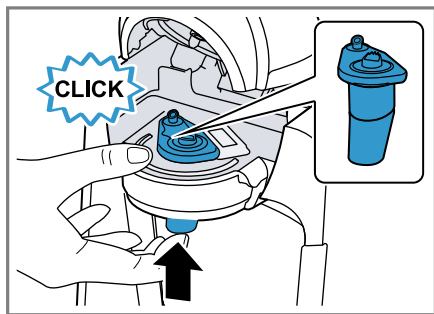
31



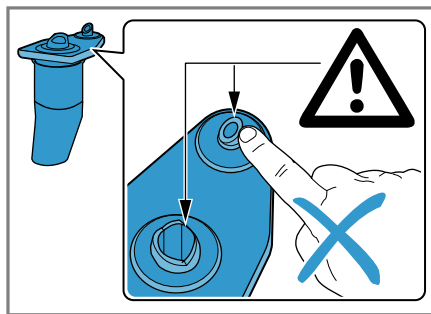
32



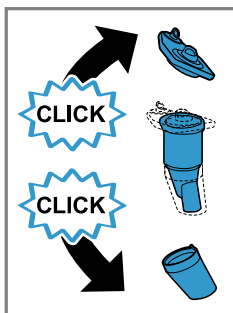
33



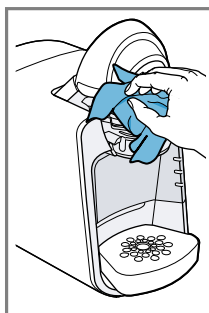
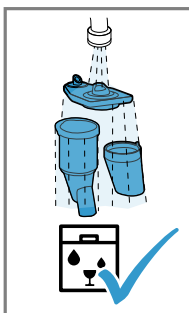
34



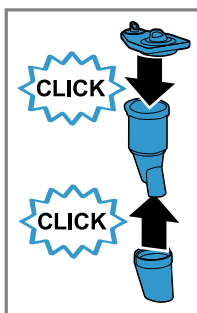
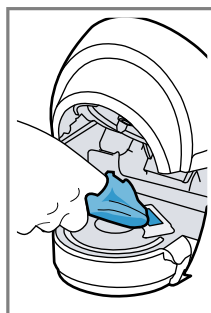
35



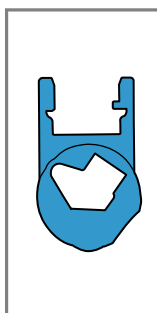
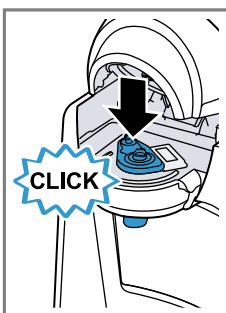
36



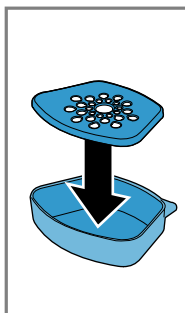
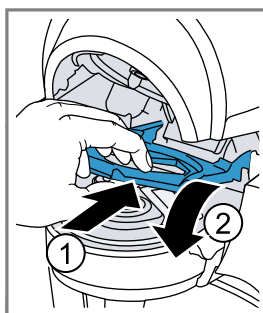
37



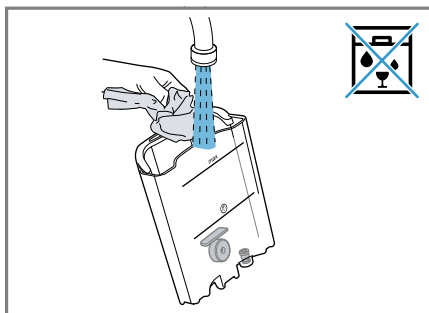
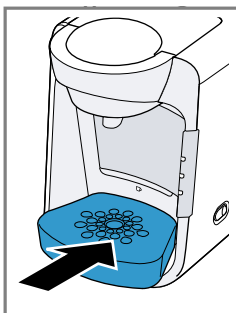
38



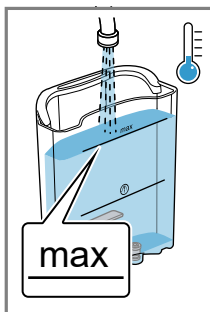
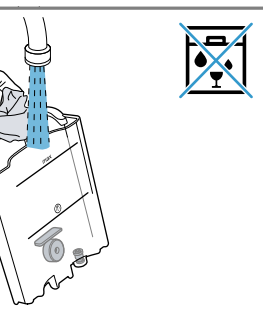
39



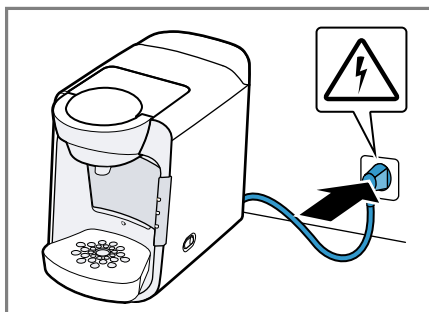
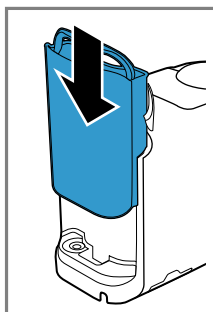
40



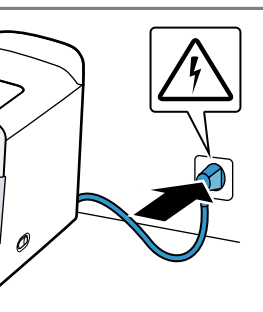
41

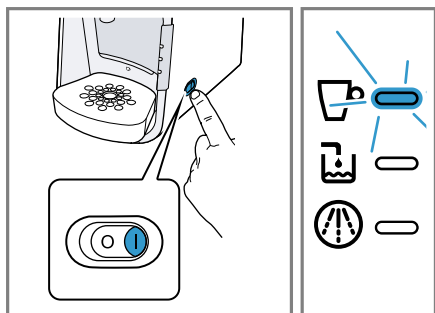


42



43

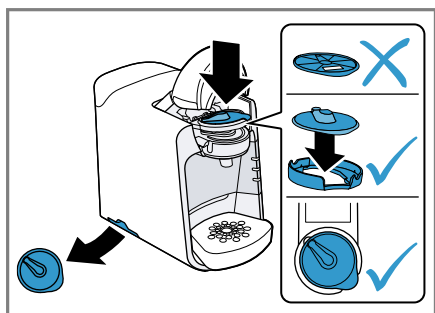




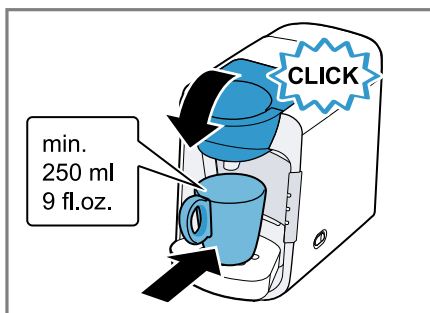
44



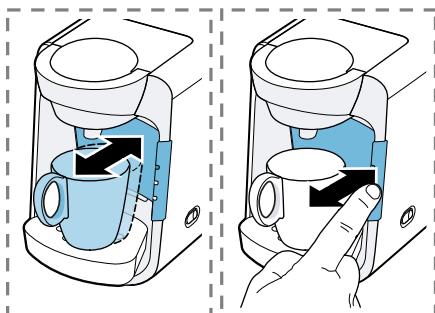
45



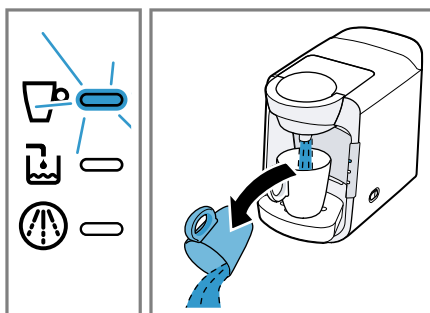
46



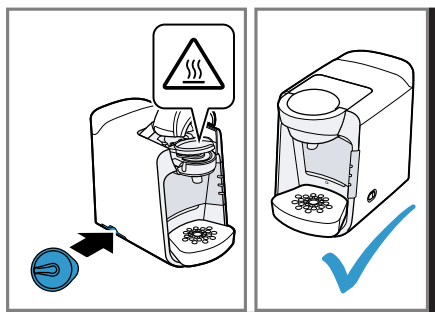
47



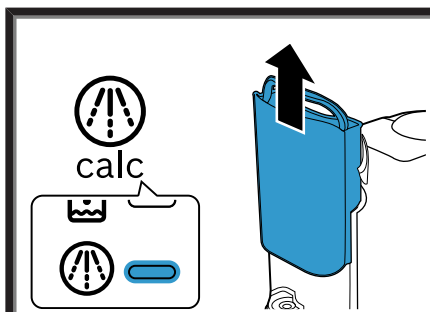
48



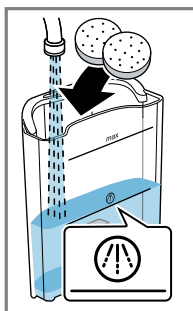
49



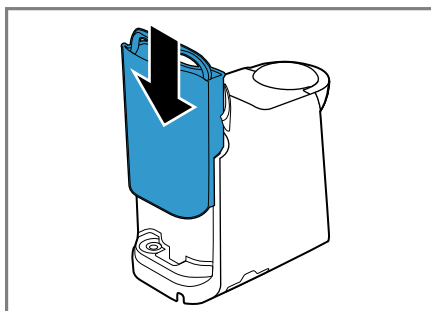
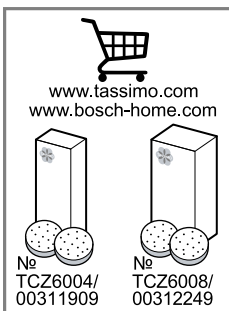
50



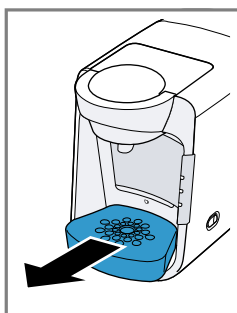
51



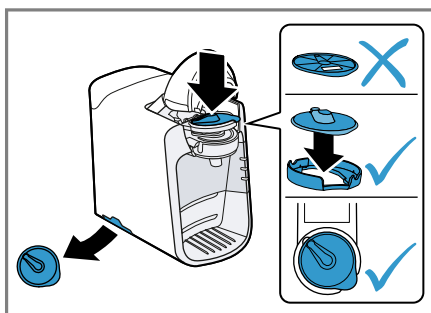
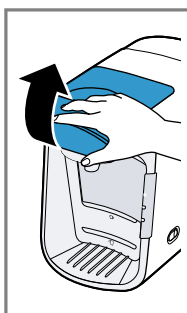
52



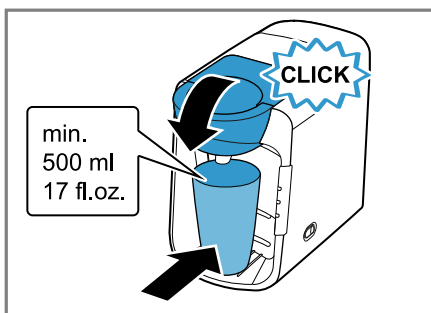
53



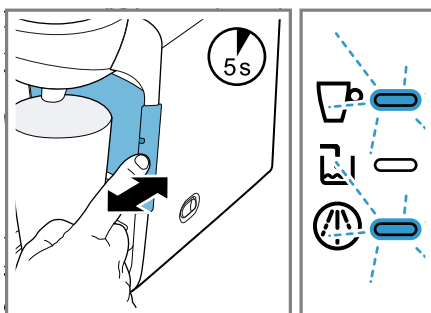
54



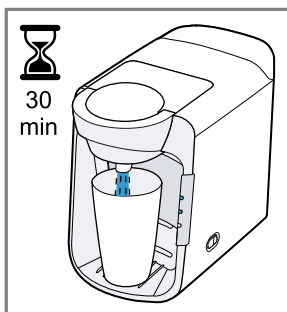
55



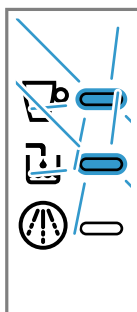
56



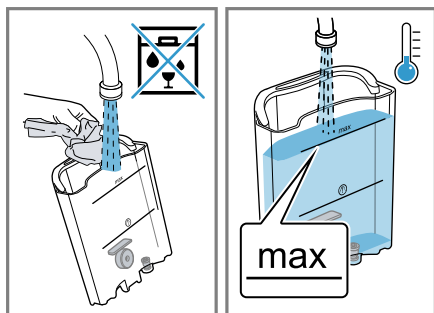
57



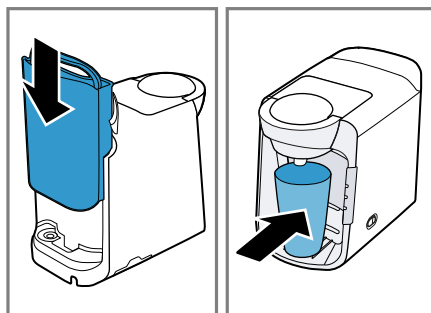
58



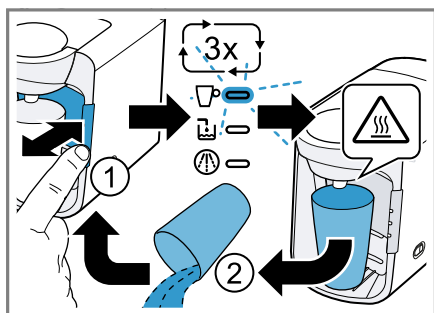
59



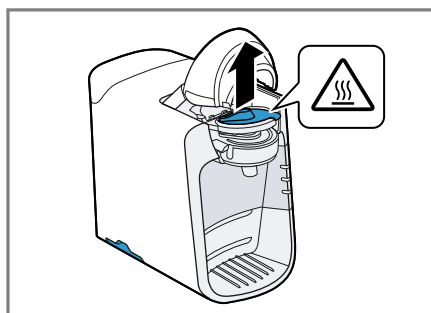
60



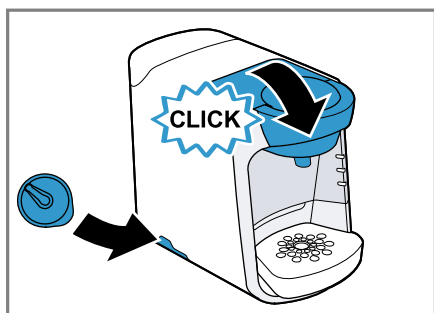
61



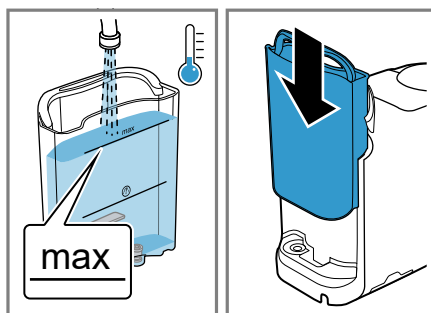
62



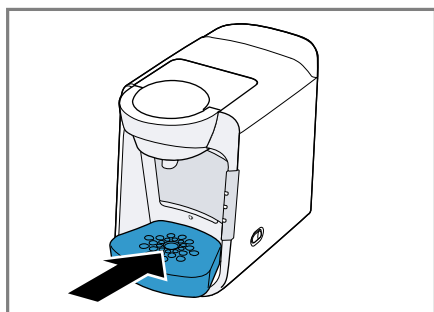
63



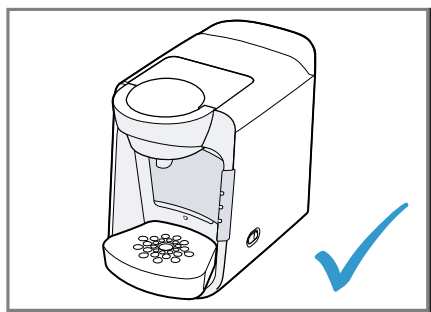
64



65



66



67

Table of contents

1 Safety	20
1.1 General information	20
1.2 Intended use	20
1.3 Restriction on user group	20
1.4 Safety information	20
2 Overall view	22
2.1 Operation and display	22
3 Performing initial start-up	22
4 Operation	22
4.1 Preparing a drink	22
5 Cleaning and servicing	22
5.1 Dishwasher-safe components	22
5.2 Cleaning the appliance	22
5.3 Descale the appliance	23
6 Dishwasher-safe components	23
7 Cleaning the appliance	23
8 Descale the appliance	23
9 Troubleshooting	23
10 Technical specifications	24
11 Disposing of old appliance	24
12 Customer Service	25



Safety

- Read this instruction manual carefully.
- Keep the instruction manual and the product information safe for future reference or for the next owner.

■ Do not connect the appliance if it has been damaged in transit.

Only use this appliance:

- for preparing hot drinks.
- In private households and in enclosed spaces in a domestic environment.
- Up to an altitude of max. 2000 m above sea level.

This appliance may be used by children aged 8 or over and by people who have reduced physical, sensory or mental abilities or inadequate experience and/or knowledge, provided that they are supervised or have been instructed on how to use the appliance safely and have understood the resulting dangers.

Do not let children play with the appliance.

Children must not perform cleaning or user maintenance unless they are at least 8 years old and are being supervised.

Keep children under the age of 8 years away from the appliance and power cable.

- ▶ Keep packaging material away from children.
- ▶ Do not let children play with packaging material.
- ▶ Keep small parts away from children.
- ▶ Do not let children play with small parts.
- ▶ Connect and operate the appliance only in accordance with the specifications on the rating plate.
- ▶ Connect the appliance to a power supply with alternating current only via a properly installed socket with earthing.
- ▶ The protective conductor system of the domestic electrical installation must be properly installed.
- ▶ Never operate a damaged appliance.
- ▶ Never operate an appliance with a cracked or fractured surface.
- ▶ Never pull on the power cord to unplug the appliance. Always unplug the appliance at the mains.
- ▶ If the appliance or the power cord is damaged, immediately unplug the power cord or switch off the fuse in the fuse box.
- ▶ Call customer services. → *Page 25*

- ▶ Repairs to the appliance should only be carried out by trained specialist staff.
- ▶ Only use genuine spare parts when repairing the appliance.
- ▶ If the power cord of this appliance is damaged, it must be replaced by the manufacturer, the manufacturer's Customer Service or a similarly qualified person in order to prevent any risk.
- ▶ Never immerse the appliance or the power cord in water.
- ▶ Liquids must not be spilled on the appliance plug connection.
- ▶ Only use the appliance in enclosed spaces.
- ▶ Never expose the appliance to intense heat or humidity.
- ▶ Do not use steam- or high-pressure cleaners to clean the appliance.
- ▶ Ventilate the appliance adequately.
- ▶ Never operate the appliance in a cupboard.
- ▶ Never leave the appliance unattended while it is switched on.
- ▶ Do not use extension cables or multiple socket strips.
- ▶ Only use adapters and power cords approved by the manufacturer.
- ▶ If the power cord is too short and a longer one is not available, please contact an electrician to have the domestic installation adapted.
- ▶ Never open the brewing system during operation.
- ▶ Only use the original Tassimo T DISCs.
- ▶ Never use a damaged T DISC.
- ▶ Never use a drinks T DISC more than once.
- ▶ Never touch hot appliance parts.
- ▶ Allow hot appliance parts to cool down before touching.
- ▶ Leave drinks to cool down if necessary.
- ▶ Do not let escaping liquids or steam come into contact with your skin.
- ▶ To avoid injuries, only use the appliance for its intended purpose.
- ▶ Be careful of your fingers when inserting or cleaning the T DISC.
- ▶ People with electronic implants must stand at least 10 cm away from the appliance.
- ▶ This minimum distance of 10 cm must also be observed for the water tank when removed.

en Overall view

- ▶ To ensure hygiene, follow the cleaning instructions for the appliance.

Overall view

You can find an overview of the parts of your appliance here.



Note: Individual details and colours may differ, depending on the appliance model.



→ Fig. 1

1	On/off switch
2	Start / stop button
3	Display symbols
4	Brief cleaning / descaling instructions
5	Service T DISC
6	Storage compartment
7	T DISC reading window
8	T DISC piercing unit
9	T DISC holder
10	Lock
11	Brewing system
12	Water tank
13	Max mark
14	Mark Ⓢ
15	Float
16	Bowl
17	Cup stand
18	Drip grate

Operation and display

You can find an overview of the function of the start / stop button and an explanation of the display symbols here.

	<ul style="list-style-type: none">■ Activate the appliance.■ Start and stop dispensing drinks.■ Prolong drinks dispensing.■ Start service programme.
	Display status.

	Fill water tank.
	Descalcify appliance.

Performing initial start-up

Follow the pictorial instructions at the start of these instructions.

→ Fig. 2 - 15

Note: You can prepare a wide range of hot beverages with the multiple hot drinks machine. When you insert a T DISC, the scanner reads the barcode and controls the flow of hot water automatically.

Operation


Preparing a drink

Find out how to prepare a drink of your choice. Follow the pictorial instructions at the start of these instructions.

→ Fig. 16 - 28

Note: Fill the water tank each day with fresh, cold, non-carbonated water.

Tips

- Do not use chemically decalcified water.
- To interrupt the dispensing process, briefly press .

Cleaning and servicing

To keep your appliance working efficiently for a long time, it is important to clean and maintain it carefully.

Dishwasher-safe components

Here you can find an overview of the components you can clean in the dishwasher.


→ Fig. 29

Cleaning the appliance

Follow the pictorial instructions at the start of these instructions.

→ Fig. 30 - 50

Descale the appliance

If the  LED lights up, run the descaling programme. Follow the illustrated instructions at the beginning of this manual.

- ▶ Immediately perform the descaling process in accordance with the instructions.
- ▶ Do not use descaling agent with phosphoric acid.

→ Fig. **51** - **67**

Dishwasher-safe components

Here you can find an overview of the components you can clean in the dishwasher.


→ Fig. **29**

Cleaning the appliance

Follow the pictorial instructions at the start of these instructions.

→ Fig. **30** - **50**

Descale the appliance

If the  LED lights up, run the descaling programme. Follow the illustrated instructions at the beginning of this manual.

- ▶ Immediately perform the descaling process in accordance with the instructions.
- ▶ Do not use descaling agent with phosphoric acid.

→ Fig. **51** - **67**

Troubleshooting

- ▶ Repairs to the appliance should only be carried out by trained specialist staff.
- ▶ Only use genuine spare parts when repairing the appliance.
- ▶ If the power cord of this appliance is damaged, it must be replaced by the manufacturer, the manufacturer's Customer Service or a similarly qualified person in order to prevent any risk.

The appliance is not working.

LEDs do not light up.

The appliance has no power supply.

- ▶ Check to see whether the appliance is connected to the mains.

Brewing process starts, drink is not dispensed.

Water tank was removed during brewing and inserted again or appliance has not been used for a long time.

- ▶ Start cleaning with the Service T DISC.

Float is stuck in the water tank.

1. Descalc the appliance.
2. Reach into the water tank and move the float up and down.

Brewing process does not start.

Water tank has not been sufficiently filled.

1. Fill the water tank with fresh, cold water up to the mark **max**.
2. Insert the water tank.

T DISC has not been correctly inserted.

- ▶ Check whether the T DISC is inserted.

The T DISC bar code is not recognised.

- ▶ Clean the T DISC reading window with a soft, damp cloth.
- ▶ Smooth out the film of the T DISC.
- ▶ Remove the used T DISC.
- ▶ Contact the TASSIMO careline if the problem persists.

The appliance not connected to the power supply when the T DISC was inserted.

- ▶ Connect the appliance to the power supply before inserting the T DISC.

Brewing unit cannot be closed.

T DISC piercing unit or T DISC holder is not correctly inserted.

1. Press the T DISC piercing unit into the holder until it clicks audibly into place.
2. Check the position of the T DISC holder.

T DISC has not been correctly inserted.

1. Insert the T DISC with the printed side facing downwards.
2. Check whether the tab of the T DISC is in the recess.

en Technical specifications

Brewing unit cannot be opened.

Brewing unit is locked.

- ▶ Only open the brewing unit when the status display remains lit continuously.
- ▶ If the brewing unit remains locked, contact the TASSIMO careline.

Water is dripping from the brewing unit.

T DISC is damaged or not correctly inserted.

- ▶ Use a new T DISC.

T DISC piercing unit is not correctly inserted.

- ▶ Press the T DISC piercing unit into the holder until it clicks audibly into place.

There is water under the cup stand.

Condensation has formed due to technical reasons or valves are clogged with limescale.

- ▶ Descale the appliance.

No LED is lit.

Appliance is in idle mode.

- ▶ Press the Start/Stop button or open or close the brewing system.

LED lights up even though there is enough water in the water tank.

Float is stuck in the water tank.

1. Descale the appliance.
2. Reach into the water tank and move the float up and down.



LED lights up although softened water has been used.

Decalcified water still contains small amounts of lime.

- ▶ Descale the appliance.

LED and LED flash, brewing is not possible.

Appliance has a fault.

- ▶ Switch the appliance off for approx. 5 minutes.
- ▶ If the  and  LEDs continue flashing, contact the TASSIMO careline.

Quality of beverages has deteriorated, e.g. crema or volume.

Beverage outlet is soiled.

- ▶ Clean the beverage outlet.
 - ▶ Clean the brewing unit with the T DISC.
- Build-up of limescale in the appliance.
- ▶ Descale the appliance.

Drink volume has reduced.

Drink dispensing halts.

Water tank has not been sufficiently filled.

1. Fill the water tank with fresh, cold water up to the mark **max**.
2. Hold down the Start/Stop button until the desired per-cup quantity is reached.

Technical specifications

Voltage	220–240 V ~
Frequency	50 / 60 Hz
Power rating	1300 W

Disposing of old appliance

1. Unplug the appliance from the mains.
2. Cut through the power cord.
3. Dispose of the appliance in an environmentally friendly manner.

Information about current disposal methods are available from your specialist dealer or local authority.



This appliance is labelled in accordance with European Directive 2012/19/EU concerning used electrical and electronic appliances (waste electrical and electronic equipment - WEEE).

The guideline determines the framework for the return and recycling of used appliances as applicable throughout the EU.

Customer Service

Detailed information on the warranty period and terms of warranty in your country is available from our after-sales service, your retailer or on our website.

The contact details for Customer Service can be found in the enclosed Customer Service directory or on our website.

HELLO!

Looking for help?
You'll find it here.

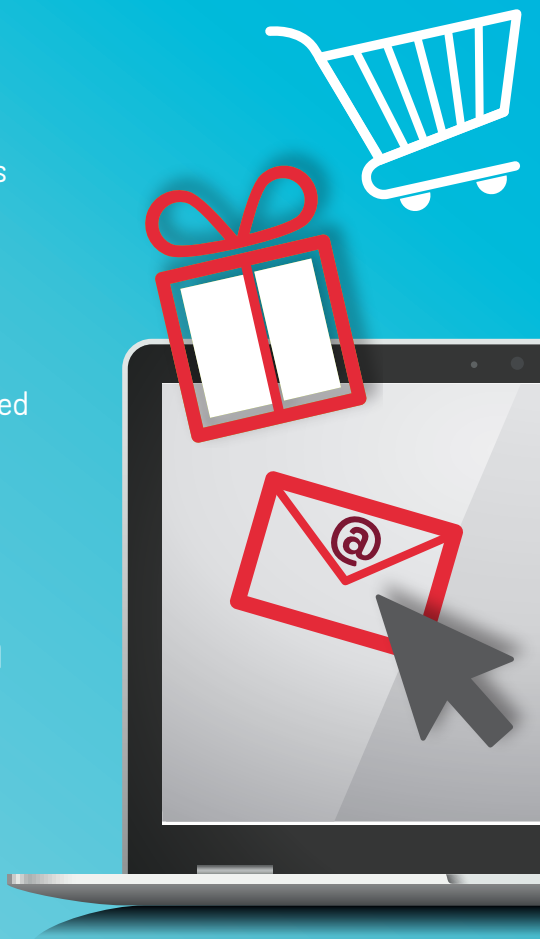
Expert advice for your Bosch home appliances, need help with problems or a repair from Bosch experts.

Find out everything about the many ways Bosch can support you:

www.bosch-home.com/service

Contact data of all countries are listed in the attached service directory.

Visit **tassimo.com**
for registration,
accessories and
more.



BSH Hausgeräte GmbH
Carl-Wery-Straße 34
81739 München, GERMANY
www.bosch-home.com

A Bosch Company

Valid within Great Britain:
Imported to Great Britain by
BSH Home Appliances Ltd.
Grand Union House
Old Wolverton Road
Wolverton, Milton Keynes
MK12 5PT
United Kingdom



(030222) 8001281554