

# FROM THE VELD TO YOUR TROPHY ROOM

## THE COST AND PROCESS OF SHIPPING TAXIDERMY



# BULL'S EYE TAXIDERM

A hunt is more than a pursuit—it is a story, etched in time, a memory of the land, the chase, and the final moment. At Bull's Eye Taxidermy, we believe the journey does not end in the field. From the untamed landscapes of Africa to the sanctuary of your trophy room, we ensure that your hard-earned trophies travel the world with the same reverence with which they were taken.

*"In Africa, you still have the spirit of the wild." - Wilbur Smith*



# THE SHIPPING PROCESS

We partner with African Legacy Logistics, a freight forwarder that understands the significance of these trophies—not merely as cargo, but as artifacts of adventure. With meticulous attention to detail, we oversee crating, export documentation, and delivery, ensuring your trophies arrive safely, securely, and seamlessly.

## 1. THE PAPER TRAIL – PERMITS & DOCUMENTATION

Every journey begins with preparation. We start the paperwork early to avoid delays once your trophies are ready to ship. CITES-listed species may require an import permit from your local wildlife authority. We'll notify you of any required documentation and assist in securing it.

## 2. CUSTOM CRATING & SECURE PACKING

A trophy's journey demands protection worthy of its significance. Each trophy is housed in a custom-built crate for maximum security and minimal wasted space. Where possible, horns are detached to reduce crate size while preserving the mount's integrity. Every crate is inspected, sealed, and recorded before leaving our facility.

## 3. THE VOYAGE – FREIGHT FORWARDING & TRANSPORT

From the African bush to your trophy room.

Air Freight – Fast, secure, and handled with minimal transfers.

Sea Freight – A cost-effective option for larger, heavier shipments (500kg+).

After arriving in Johannesburg, African Legacy Logistics selects the best shipping route based on your location, budget, and timeline.

## 4. THE ARRIVAL – IMPORT CLEARANCE & DELIVERY

The final step requires precision. Customs clearance and wildlife authority approvals are completed before delivery. We work with a trusted network of brokers and import specialists to ensure your shipment reaches its final destination smoothly and efficiently.

## HOW SHIPPING COSTS ARE CALCULATED

Shipping is not simply about weight—it is about volume. Large yet lightweight shipments take up significant space in an aircraft or container, and pricing reflects that. The formula is standardized worldwide.



## THE FORMULA

$$(\text{Length} \times \text{Width} \times \text{Height in cm}) \div 6000 = \text{Volumetric Weight (kg)}$$

The 6000 divisor is an international standard that ensures fair pricing based on space utilization rather than just raw weight.



# CRATE SIZES & ESTIMATED SHIPPING COSTS TO THE USA

A rough breakdown of our most commonly used crate sizes, their capacity, and estimated shipping costs for both air and sea freight. However, we understand that every hunt is unique, and trophy sizes vary. We offer fully customizable crate sizes to accommodate your specific needs—this is simply a guideline to help estimate shipping costs.





Crate size	Examples of trophies that would fit inside	Estimated Air Freight Cost in \$ 	Estimated Sea Freight Cost in \$ 
Small size crate 100 cm x 70 cm x 65 cm volumetric weight in kgs - 75 kg	<ul style="list-style-type: none"> <li>1 Kudu skullmount</li> <li>1 Kudu backskin</li> <li>1 Impala skullmount</li> <li>1 Impala backskin</li> <li>1 Blue Wildebeest skullmount</li> <li>1 Blue Wildebeest backskin</li> <li>1 Blue Wildebeest flyswish</li> <li>1 Warthog shoulder mount</li> <li>1 Warthog backskin</li> <li>1 Zebra flatskin on felt</li> </ul>	Air Freight for small crates to ship cost approximately: \$ 1, 183.00	Sea Freight for small crates to ship cost approximately: \$ 800.00
Medium size crate 125 cm x 90 cm x 80 cm volumetric weight in kgs - 150 kg	<ul style="list-style-type: none"> <li>1 Nyala shouldermount</li> <li>1 Blue Wildebeest skullmount</li> <li>1 Blue Wildebeest flatskin</li> <li>1 Blesbuck shouldermount</li> <li>1 Kudu shouldermount</li> <li>1 Kudu backskin</li> <li>1 Impala skullmount</li> <li>1 Impala flatskin</li> <li>1 Warthog tusks on shield</li> </ul>	Air Freight for medium crates to ship cost approximately: \$ 1, 945.00	Sea Freight for medium crates to ship cost approximately: \$ 1, 223.00
Large size crate 160 cm x 120 cm x 109 cm volumetric weight in kgs - 350 kg	<ul style="list-style-type: none"> <li>1 Common Springbuck shouldermount</li> <li>1 Common Springbuck backskin</li> <li>1 Copper Springbuck shouldermount</li> <li>1 Copper Springbuck backskin</li> <li>1 Black Springbuck shouldermount</li> <li>1 Black Springbuck backskin</li> <li>1 White Springbuck shouldermount</li> <li>1 White Springbuck backskin</li> <li>1 Lechwe shouldermount</li> <li>1 Lechwe backskin</li> <li>1 Hartman Zebra shouldermount</li> <li>1 Hartman Zebra backskin</li> <li>1 Gemsbuck shouldermount</li> <li>1 Gemsbuck backskin</li> <li>1 Warthog shouldermount</li> <li>1 Steenbuck fullmount</li> <li>1 Roan shouldermount</li> <li>1 Roan backskin</li> <li>1 Kudu shouldermount</li> </ul>	Air Freight for large crates to ship cost approximately: \$ 3, 783.00	Sea Freight for large crates to ship cost approximately: \$ 2, 110.00

TABLE CONTINUED BELOW





Crate size	Examples of trophies that would fit inside	Estimated Air Freight Cost in \$ 	Estimated Sea Freight Cost in \$ 
<p>Extra large size crate 250 cm x 120 cm x 160 cm Volumetric weight in kgs - 800 kg</p>	<p>1 Sable shouldermount 1 Sable backskin 1 Blue Wildebeest shouldermount 1 Blue Wildebeest backskin 1 Duiker skullmount 1 Duiker shouldermount 1 Jackal skullmount 1 Jackal fullmount 1 Impala shouldermount 1 Impala backskin 1 Steenbuck fullmount 1 Nyala fullmount 1 White Blesbuck shouldermount 1 White Blesbuck backskin 1 Wartog shouldermount 1 Warthog fullmount 1 Eland shouldermount 1 Eland backskin 1 Waterbuck shouldermount 1 Waterbuck backskin 1 Kudu shouldermount 1 Kudu backskin</p>	<p>Air Freight for extra large crates to ship costs approximately: \$ 7,920.00</p>	<p>Sea Freight for extra large crates to ship costs approximately: \$ 4,145.00</p>

## NOTES ON FREIGHT

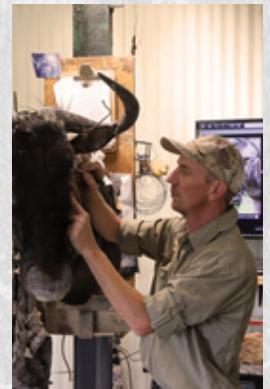
**Air Freight:** Typically takes 1–3 weeks, offering faster, more secure transit.

**Sea Freight:** Ranges from 3–6 weeks, providing a more economical option for larger or heavier shipments.

Please note that insurance prices are not included in this table and will be quoted at the time of shipping. The prices listed above serve as a general guideline and are subject to change at any time.

Freight prices are calculated per kg and depend on the specific air or sea freight route.

These estimates cover freight only. Additional costs, such as permits, customs clearance, and destination fees, may apply. For precise shipping needs or a detailed quote tailored to your trophies, please contact our expert team.





# CONTACT US



Some trophies stand for more than the hunt. They tell of the early morning tracks in the dust, the stillness before the shot, the land that gave its all for the pursuit. The journey home is part of that legacy. At Bull's Eye Taxidermy, we ensure that journey is worthy of the trophy itself. With precision, expertise, and care, we safeguard your memories from Africa's vast plains to your trophy room.

Craig Pidduck  
Managing Director  
Bull's Eye Taxidermy (Pty) Ltd.



Bull's Eye Taxidermy (Pty) Ltd  
Cnr Melkrivier & Sterkstroom Rd  
Vaalwater 0530

Telephone: +27 14 755 4945

WhatsApp: +27 72 118 4867

Email: [bullseye@icon.co.za](mailto:bullseye@icon.co.za)

Website: [www.bullseyetaxidermy.co.za](http://www.bullseyetaxidermy.co.za)

*"Hunting Africa. A tradition, a challenge, a privilege."*