

THE ETON

The size and solid look of this classic 4-bedroom Colonial are truly impressive... and so are the professionally landscaped grounds! The interior is equally rich. To one side of the wide reception foyer, a friendly, old-fashioned fireplace with a colonial mantel beckons you to a tremendous 24-foot living room. There's a formal dining room across the foyer... a bright breakfast area adjoining the kitchen... and a glamorous powder room.

At the back of the house, a wonderful family room is completely wood paneled, with handsome built-in bookcase and cabinet, and a window-wall that opens to the wide back lawn. The luxuriously detailed kitchen has beautiful, furniture-fin-

ished wood cabinets, and plenty of them! Also a convenient breakfast bar. There's a stainless steel sink, stainless steel Puritron exhaust hood, even a chopping block! Appliances, all by General Electric, include a 13.5 cu.ft. combination refrigerator-freezer, automatic wall oven, pushbutton counter-top range, under-counter dishwasher and garbage disposal; and in the separate laundry room, an automatic washer and matching dryer.

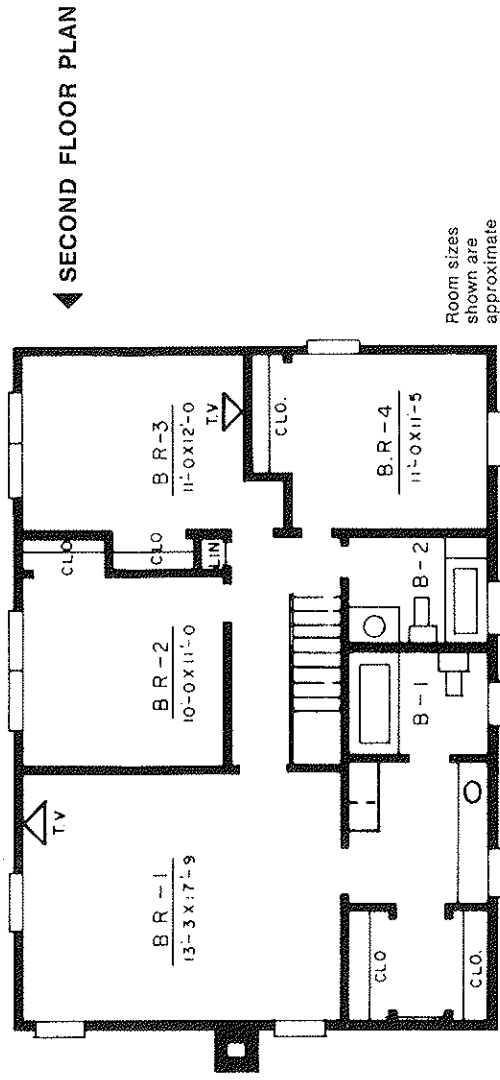
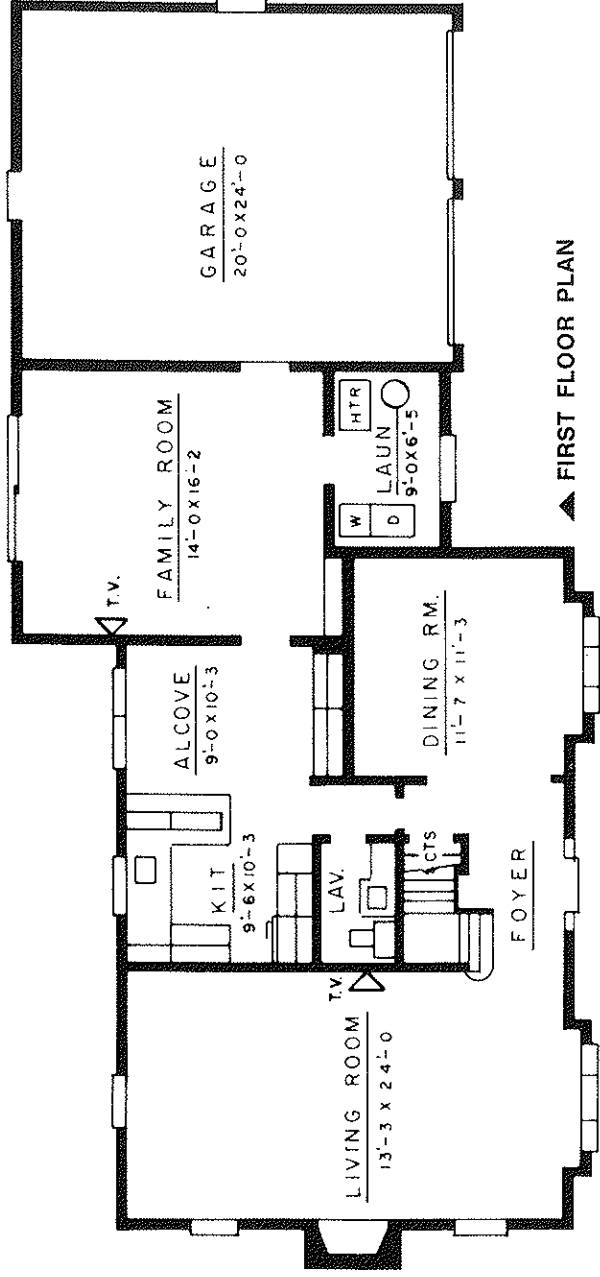
Upstairs, there are four roomy bedrooms and two beautifully-appointed baths. The extra-large master suite has plenty of room for chairs, tables, even a TV. Included in this suite are a huge walk-in closet, dressing room with built-in vanity and

full-width wall mirror, and a private bath. Another complete bath, in the hall, also has a built-in vanity with full-width mirror. Both baths have ceramic tiled floors and bath areas. There are seven large closets. In addition the two-car garage, has extra overhead storage space.

The Eton exterior is completely cedar shingled. It is pre-wired for telephone installation, and equipped with Jerrold TV System—no need for unsightly roof-top antenna! Central air conditioning by Westinghouse, and professional landscaping, are also included in the price. If you want an oversized lot, or a side-entry, two-car garage on a corner plot, these are available at additional cost.

THE ETON

Lakeridge



Levitt and Sons
QUALITY · INTEGRITY · EXPERIENCE

Sales Office: 105 Old Bridge-Matawan Road, Madison Township, N.J. Phone: 201-583-1010