



MidAtlantic Resiliency Link

Project Introduction

NextEra Energy Transmission MidAtlantic (NEET MA)

January 13, 2025

Introductions

► NextEra Energy Transmission (NEET)

- Kaitlin McCormick, Senior Director – Development
- Lisa Liu, Sr. Project Manager – Development
- Brad Rolfes, Sr. Environmental Specialist – Environmental Services
- Danielle Hall, Sr. Project Manager – Environmental Services

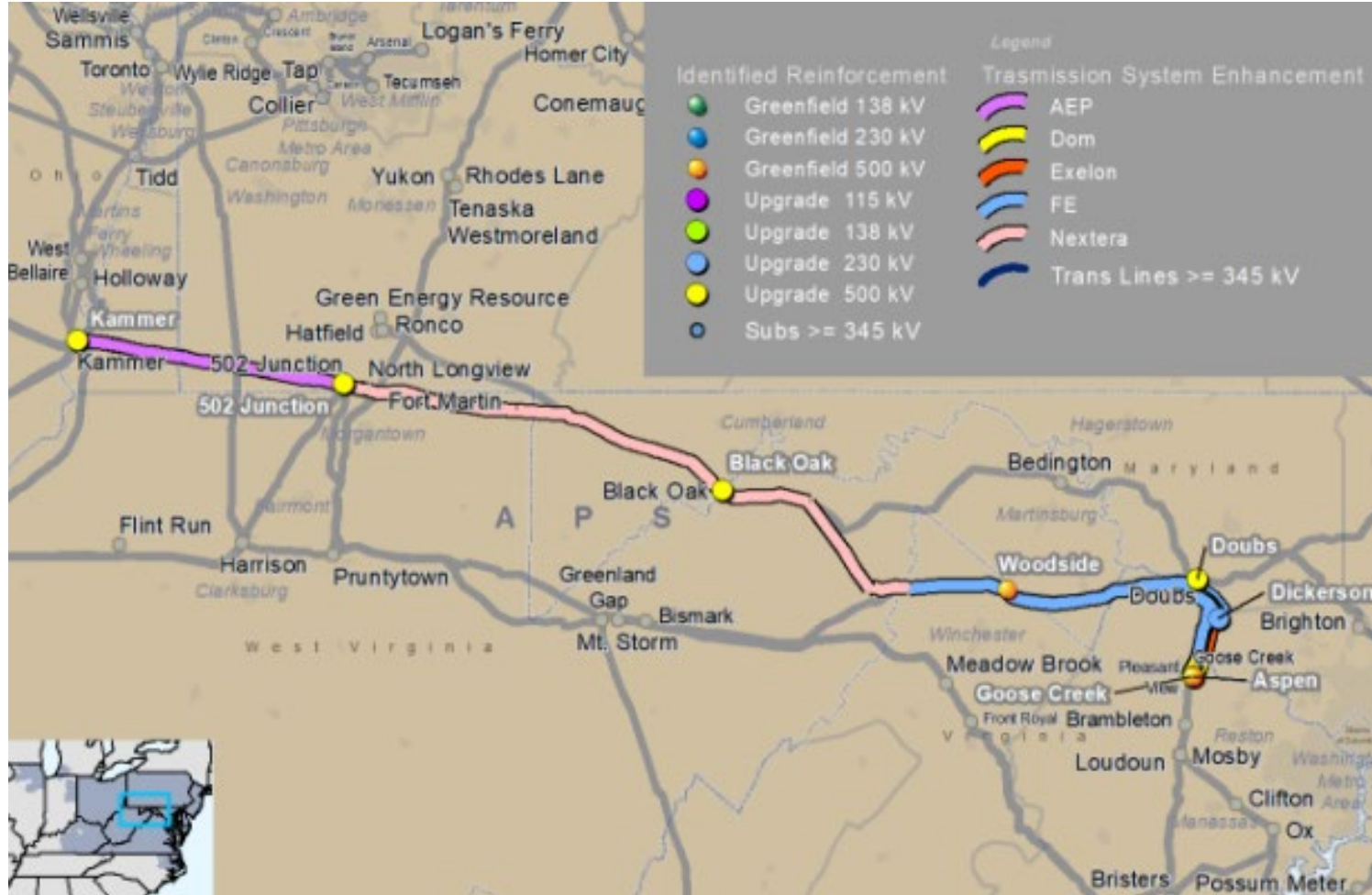
► Environmental Resources Management, Inc. (ERM)

- Heather Heater – Program Manager
- Christine Essick – Environmental Project Manager
- Katie McDaniel – Deputy Project Manager
- Lexi Kenna – Project Coordinator

Agenda

- ▶ **Project Background and Overview**
 - » Project Details and Schedule
 - » Routing Process
- ▶ **Agency Correspondence**
- ▶ **Permitting Triggers**
- ▶ **Maryland Resource Constraint Review**
- ▶ **Open Discussion, Points of Contact, and Next Steps**

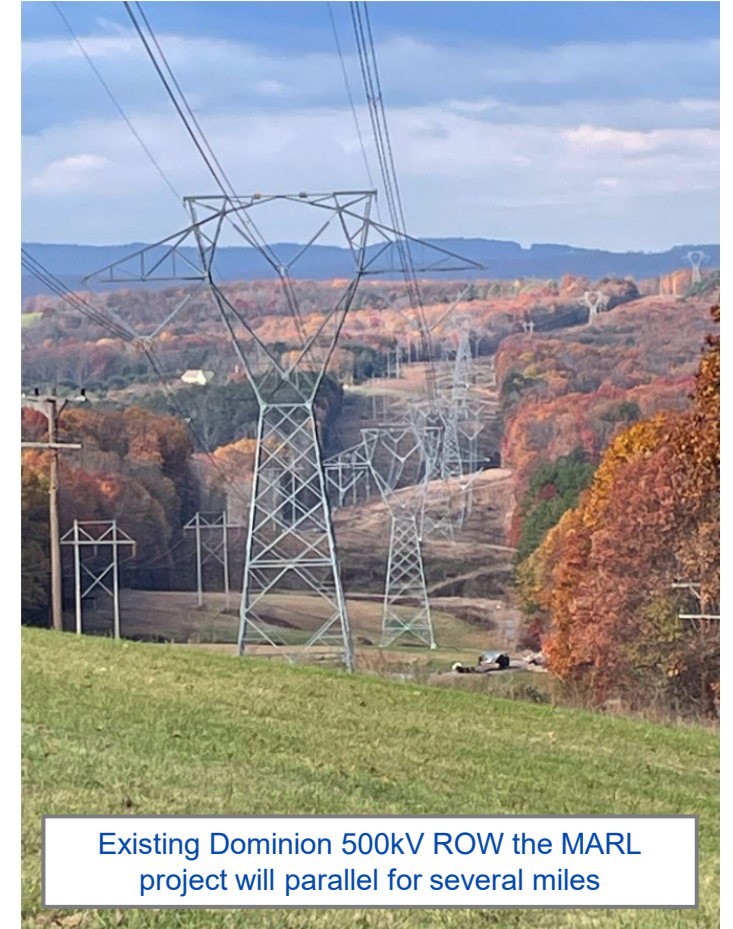
MidAtlantic Resiliency Link (MARL) Project



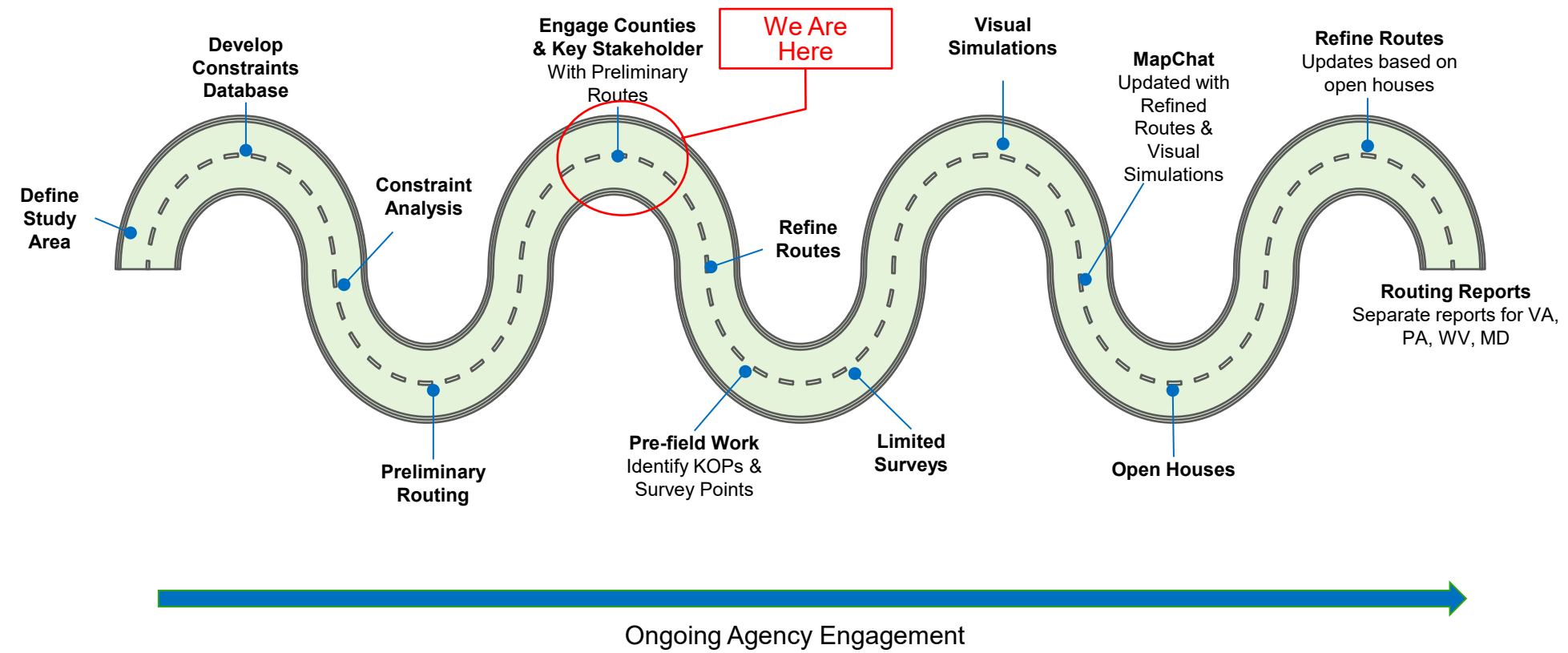
NOTE: This map is only intended to illustrate the general electrical connectivity of the projects, and should not be relied upon for exact geographical substation locations or line routes.

MARL Project Details

- ▶ **Expected project design parameters**
 - » Project in early-stage design with parameters to be refined
 - » 200' ROW
 - » Lattice towers
 - » Utilization of avoidance and minimization in project design
 - » Colocation with existing transmission where possible
- ▶ **Project is in early-stage development with active work on a routing study and stakeholder outreach**
 - » Seeking agency input on permitting issues and initial outreach to inform routing study
- ▶ **Expected project timeline**
 - » Pre-application agency coordination – began Q2 2024
 - » CPCN filing in all states – ~Q3/Q4 2025
 - » Survey work commencement – Q3/Q4 2025



Routing Process Roadmap



Agency Correspondence

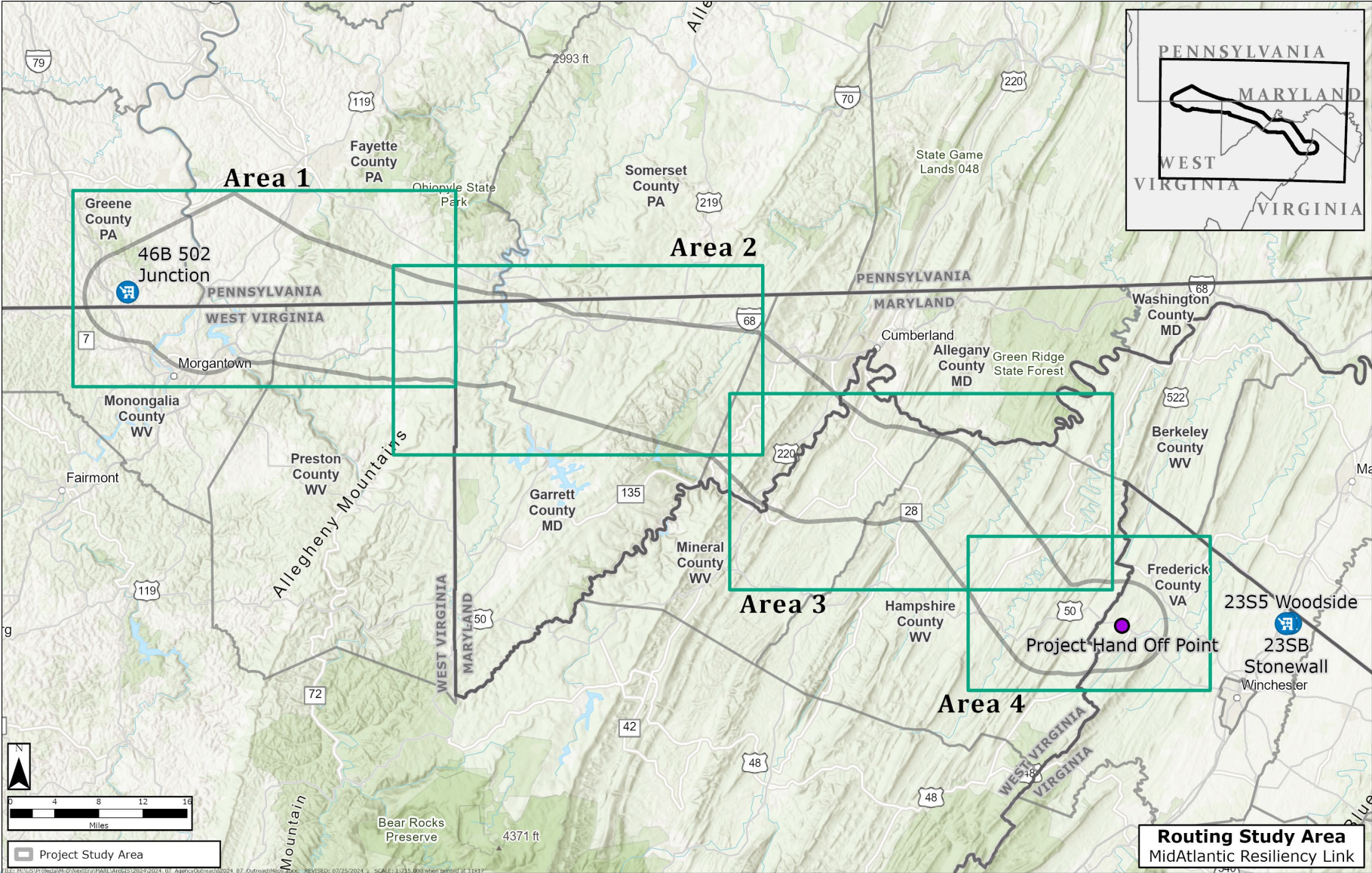
► State Agencies

- » MD Joint Evaluation Meeting – 7/31/2024
- » PA DEP – 8/7/2024
- » WV DNR – 8/22/2024
- » VA DEQ – 8/22/2024
- » Maryland PPRP – 9/10/2024 and 12/19/2024
- » State Historic Preservation Offices outreach is underway

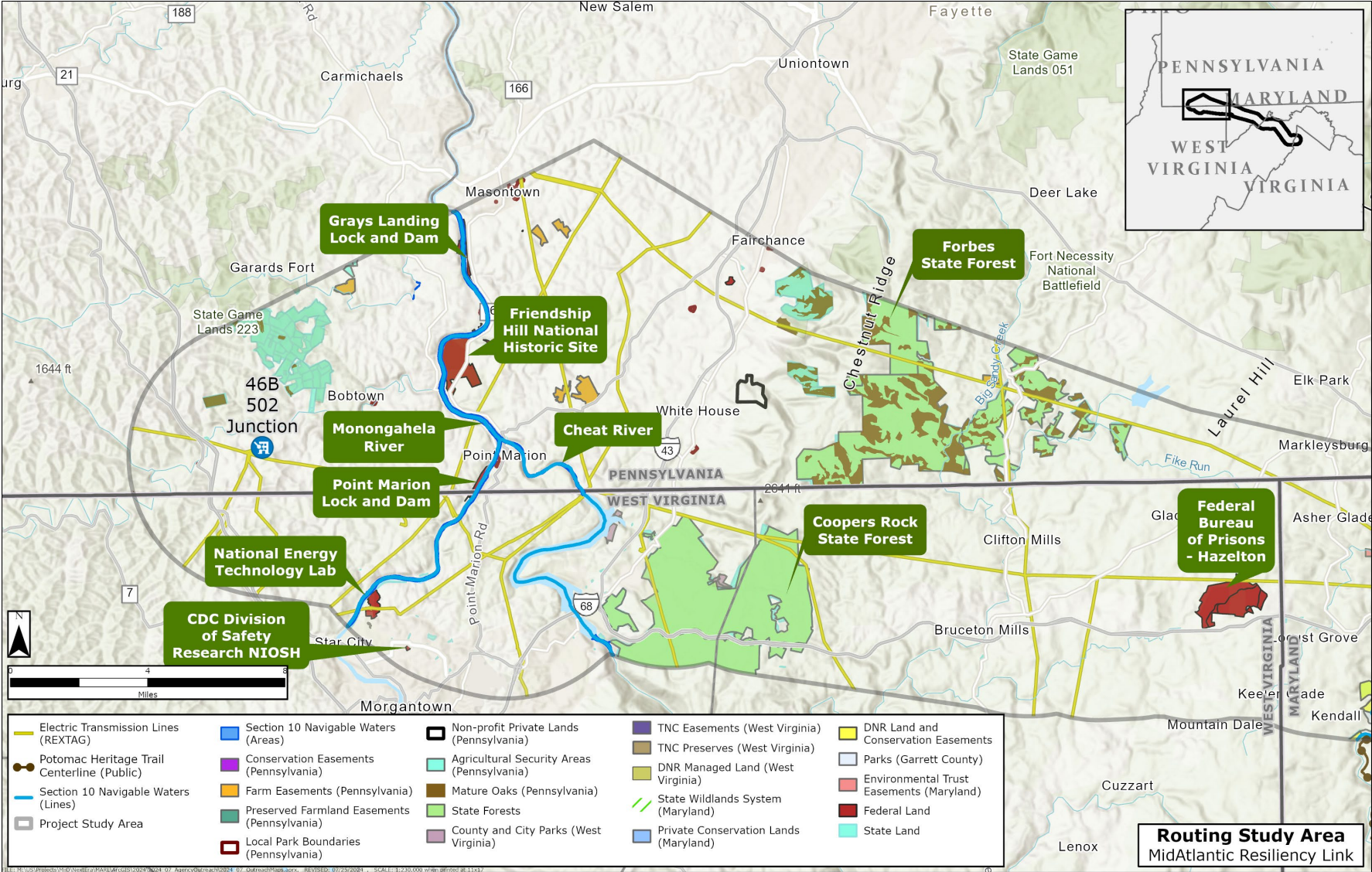
► U.S. Army Corps of Engineers & U.S. Fish and Wildlife Service

- » Ongoing coordination meetings with multiple Districts and Field Offices is occurring

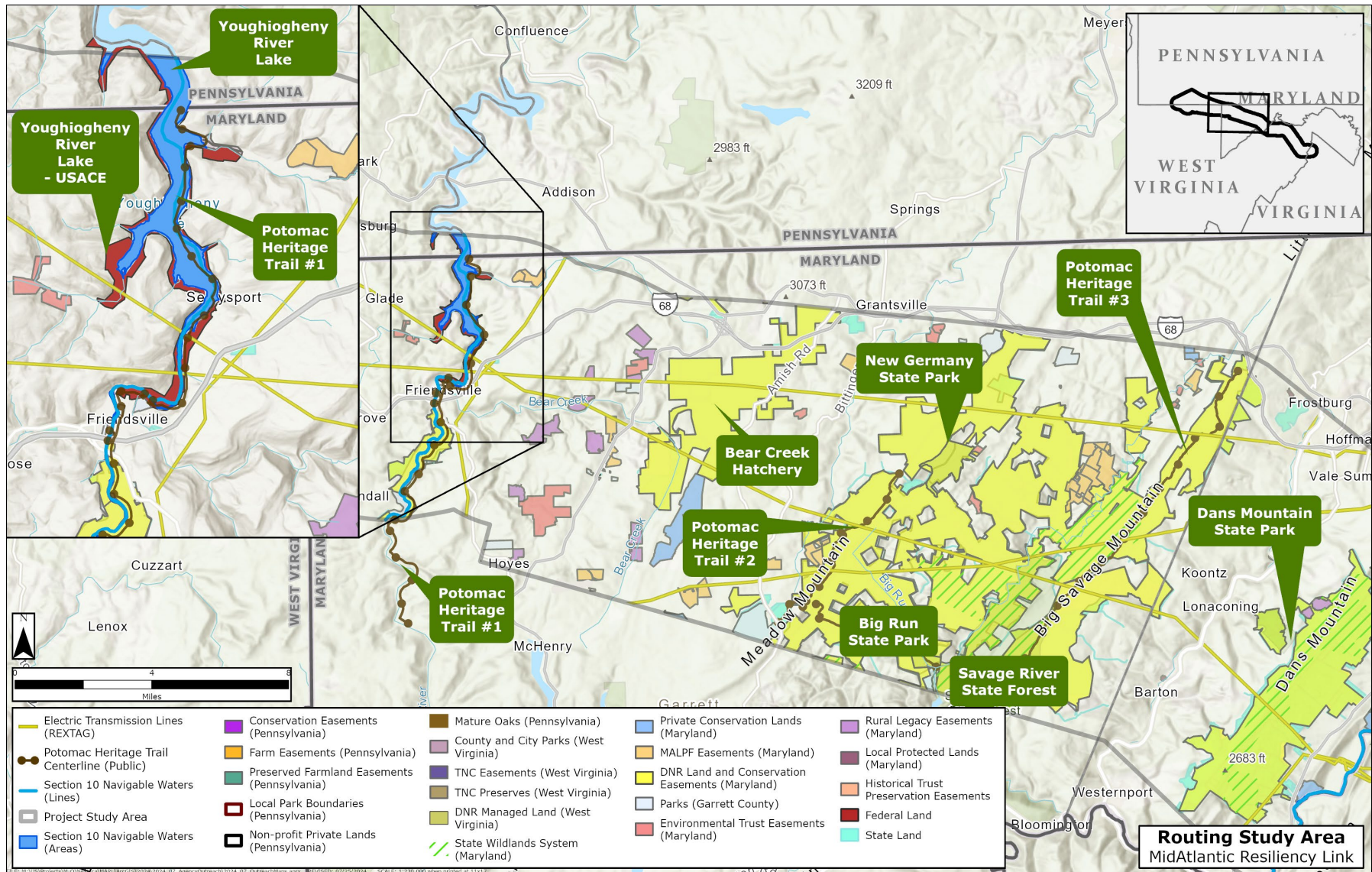
MARL Project Study Area



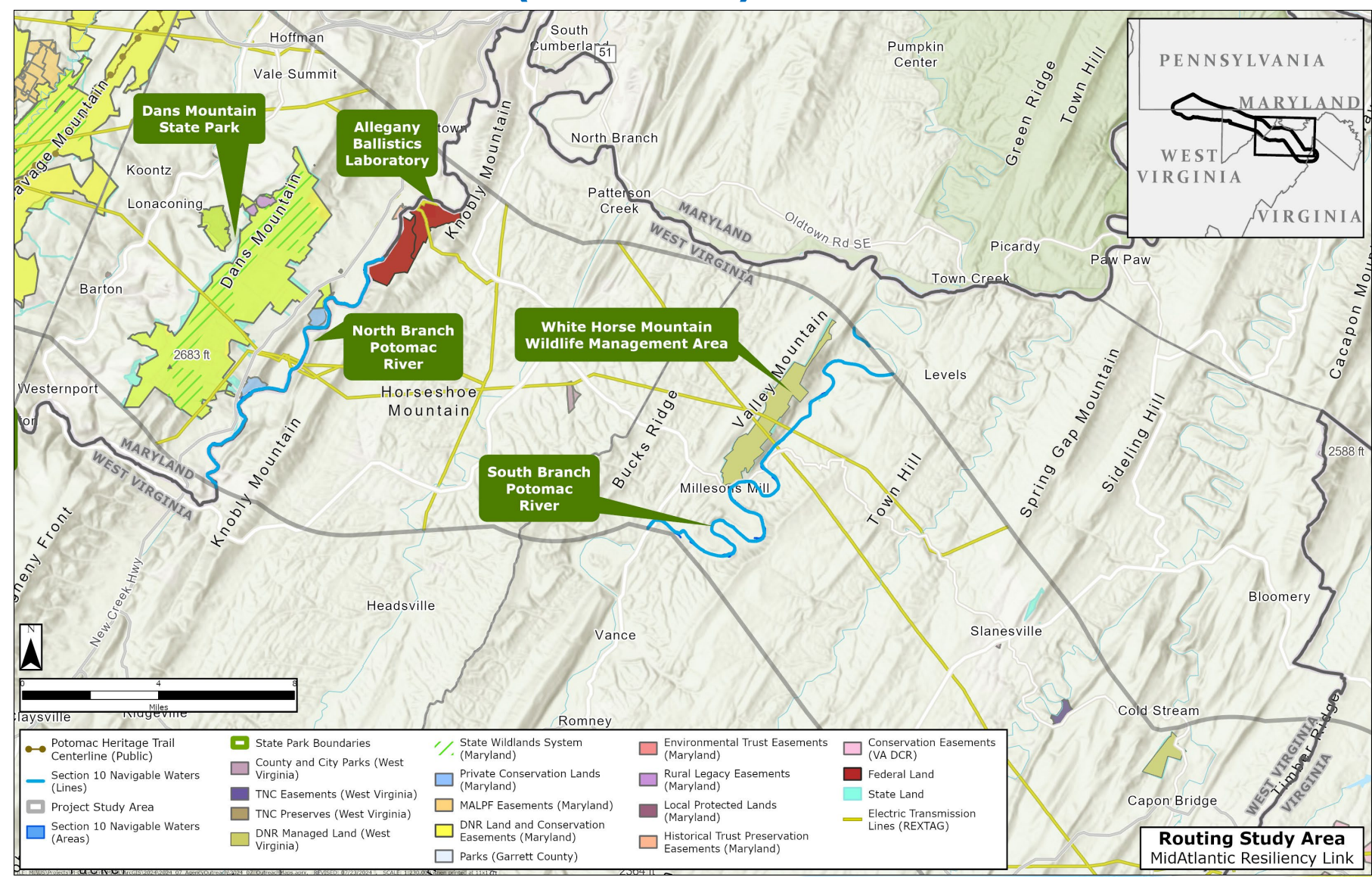
Study Area Constraints (PA/WV)



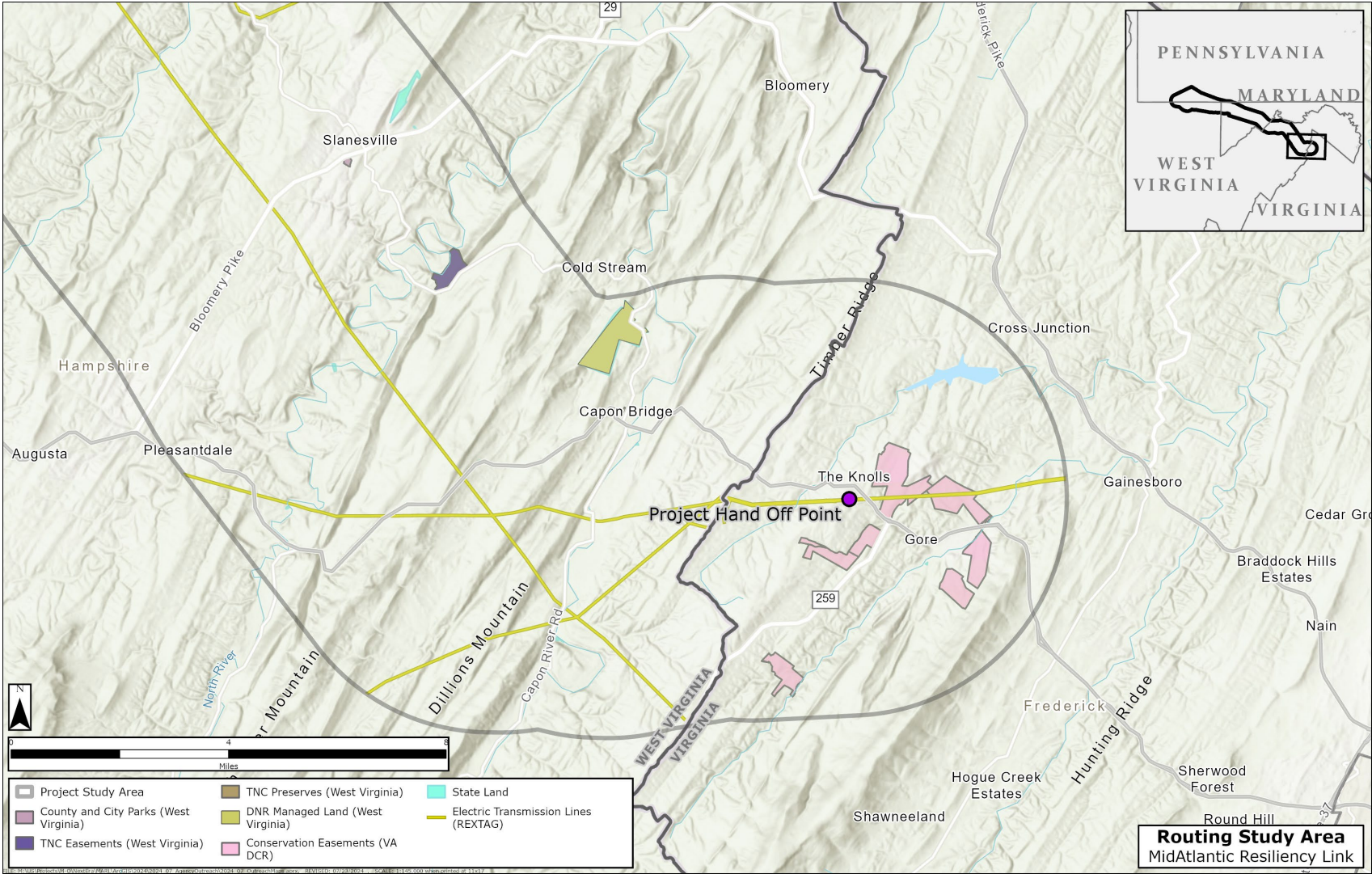
Study Area Constraints (MD)



Study Area Constraints (MD/WV)



Study Area Constraints (WV/VA)



Major Permit Triggers and Applications

- ▶ **Certificate of Public Convenience and Necessity (CPCN)**
 - » PPRP responsible for managing consolidated review of all issues related to transmission projects in MD
- ▶ **Wetland and Waterbody Impacts**
 - » Joint Federal/State Application for the Alteration of any Floodplain, Waterway, Tidal or Nontidal Wetland in Maryland
- ▶ **Maryland Forest Conservation Act (FCA)**
 - » Western Maryland counties with extensive forest cover (Alleghany and Garrett) are currently exempt from the FCA
- ▶ **Endangered Species**
 - » State agency coordination to be completed concurrent with USFWS review
- ▶ **Cultural Resources**
 - » Coordination with Maryland Historic Trust; permit required for survey on state lands
- ▶ **Crossing of Designated Wildlands**
 - » If required, exemption to the prohibition of development within Wildlands would require action by executive and legislative branches
- ▶ **Erosion and Sediment Control**
 - » General Permit for the Discharges of Stormwater associated with Construction Activity (Maryland General Permit No. 20-CP)

Open Discussion / Points of Contact / Next Steps

- ▶ **Key Contacts for Continued Coordination with MDNR Forest Service**
- ▶ **Key Contacts for Continued Coordination with NEET**
 - » Brad Rolfes/Danielle Hall
 - » Kaitlin McCormick
- ▶ **Next Steps**
 - » Individual Follow-up meetings (as needed)

Questions ?

NEXtera™

ENERGY



TRANSMISSION
MIDATLANTIC