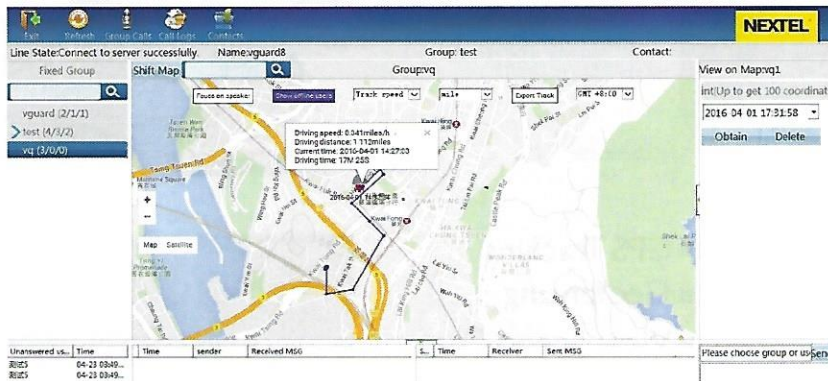


PC Dispatch Console with GPS

NEXTEL™



Applications

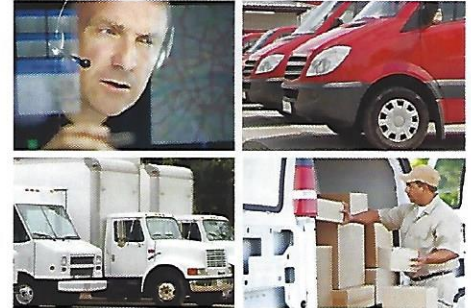
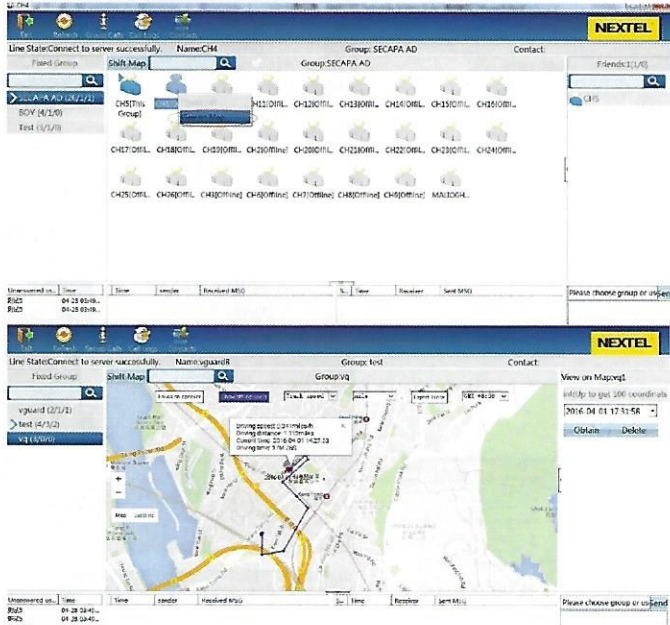
For ultra long range or management communications such as transportation and logistics, assisted living, public safety, highway rescue, emergency command, event and sport organizer, road trips, group recreation e.g car & bike convoy...etc.

Background Introduction

ROIP (Radio over Internet Protocol) technology, is similar to VoIP, but augments two-way radio communications rather than telephone calls. From the system point of view, it is essentially VoIP with PTT (Push To Talk). To the user it can be implemented like any other radio network. RoIP can be deployed over private networks as well as the public Internet. It is useful in land mobile radio systems used by public safety departments and fleets of utilities spread over a broad geographic area. RoIP technology is usually using for three factors: first, the need to span large geographic areas; second, the desire to provide more reliable, or at least more repairable links in radio systems; and third, to support the use of many base station users, that is, voice communications from stationary users rather than mobile or handheld radios.



PC Dispatch Console with GPS Features & Requirements



Main Features

- NEXTEL Group Connect
- NEXTEL Private Connect
- Send & Receive Text Messages
- Send Text-to-Speech Messages
- Received & Sent Message List
- Record & Play Back Radio Calls
- GPS Tracking
- Geofencing
- View Speed Data
- View GPS History
- View Distance/Time
- Export Tracking Data

PC Requirements

Microsoft Windows 98/XP/2000/Vista/7/8/10
 Pentium III Processor or Greater, 256MB RAM, 20MB HD
 1024 x 768 SVGA Graphics Card & Monitor or Greater
 56K, DSL, Cable, LAN/WAN, 3G/4G Internet or Greater
 Built in or External Microphone & Speakers
 Built in or External Sound Card

Note: specifications are subject to change, in the interest of technical improvement, without notice or obligation.

