

CorrosionCOPS

When it's Rust Call US!

Agriculture, Landscape and Turf Equipment

Rust Inhibitor Guidelines—CarWell CP90/Rust Cop

For best results equipment should be free of compacted grass clippings, dirt build up or other debris that blocks the spray of CarWell CP90 from the metal surface. Equipment should be dry prior to spray procedure.

The regulator on the spray system should not exceed 45 PSI (35 PSI for spray pressure on the Tri-Con gun is the best pressure), otherwise a large cloud of mist will occur. Insure the pickup adjustment at the top of the canister is closed or just barely open. Turn clock-wise until the knob is seated for less product to be picked up and atomized in the spray tube and wand.

NEVER FORCE THIS ADJUSTMENT KNOB!



Tricon applicator
Spray System

Spray all metal areas with the **Carwell CP-90 rust inhibitor** until the surface glistens. Some areas you may see small beads of rust inhibitor on broad open surfaces. This will occur in large open and flat areas. More attention should be focused on the cracks, crevices, seams, folds, welds and fastening points where through the hull fittings and mounting plates are located as these areas require a higher degree of corrosion protection than the flat or broad sheet metal areas.



Carwell CP-90

Spray enough rust inhibitor to allow CP90 to barely pond; not enough to form a large puddle and run off where the spray was directed, but enough so if the product needs to creep into tight areas the product can freely do so.

Hollow frame rails and open tubular chassis are sprayed best by inserting the spray wand as far into the tubular as the wand can travel. When the trigger is depressed watch for a mist cloud to emerge from the furthest open end of the tubular. Count to 10 and stop spraying, move to the next area to be treated.

You can manufacture your own spray wands by using refrigerator ice maker water hose tubing. The custom cut length can be assembled to the coupler at the head of the spray gun. Insure when disassembling the coupler not to crush it as the part is made from brass and can be easily damaged. We have also found that use of hydraulic quick disconnect fittings matched to oil impervious tubing ($\frac{1}{4}$ ID) works well, as the tubing can be cut to desired length to manufacturer extended wands that can be inserted into tubular. Cap the end of the tube or hose with a $\frac{1}{4}$ " push on barb fitting, slightly crush the nipple to make the opening oblong or egg shape for a fan spray once the inhibitor is atomized.

Insure that no belts or pulley areas where the belts ride on are sprayed. Brakes should not be sprayed, and should surfaces where operators climb onto with their feet be sprayed, this area should be rinsed prior to equipment use with fresh water with a trigger nozzle on a garden hose. Metal seat backs and buckets benefit from inhibitor spray so be sure not to miss that area.

Any area that is made from metal will benefit from the spray of the CP-90 rust inhibitor. Best results come with allowing a 24 hour set period before using the equipment. Should the equipment be rinsed just after spraying, the life cycle of the inhibitor may be shortened, so it is best to allow at least 24 hours set time after spraying.

If brackish water is used for irrigation, you may find that your equipment needs to be sprayed within a 90 day period, depending on how often the equipment is rinsed. If the equipment can be blown off with an air hose, longer life of the CarWell CP90 inhibitor will occur.

continued page 2

Solutions for Rust and Corrosion

94-463 Alapine Street, Waipahu, Hawaii 96797 Phone (808) 676-1963 Fax (808) 678-1677

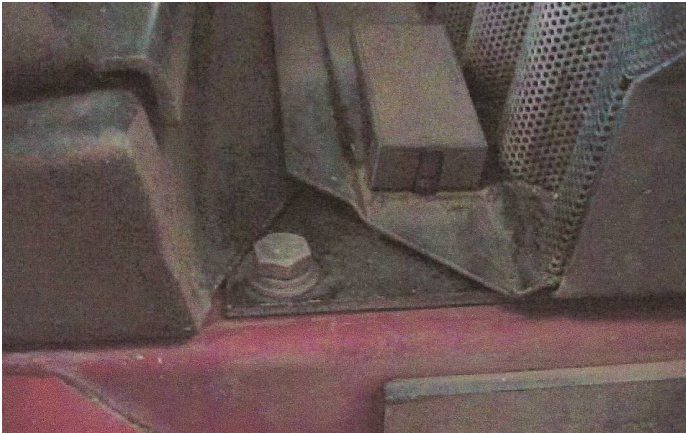
www.corrosioncops.com

Agriculture, Landscape and Turf Equipment

Rust Inhibitor Guidelines—CarWell CP90/Rust Cop— continued page 2

Picture of two identical Toro golf mowers. Age 18 months. The mower pictured on left has been treated with **CarWell CP-90** on a 6 month schedule. The mower on the right has not been treated with CarWell CP-90.

Note how the untreated mower frame rail is wet, as the moisture is trapped between the frame rail & chassis resulting in sandwich corrosion. Left unchecked the corrosion will track along the rail and eventually cause frame failure. Good news—even spot treatment of CarWell CP-90 will aid in corrosion control.



TREATED WITH CarWell CP-90



NOT-TREATED

Benefits of regular use of CarWell CP-90

- Reduces the need for replacement parts, brake cables, oil and transmission pans/bolts, battery compartments
- CarWell rust protection retards the electrolysis (aluminum/steel) problems
- Reduces electrical wiring breakdowns caused by corrosion, or the “greening” of wires
- CarWell works on any level of corrosion new, used or even rusted vehicles
- CarWell works on the lubrication of windows/lock assemblies, door pins, hood/trunk hinges, mirror mounts
- Treated with CarWell CP-90 will reduce corrosion activity up to 95%
- CarWell CP-90’s unique ability to penetrate industrial coatings will prevent active corrosion cells from continued movement thus reducing undercutting and more damage to metals
- No cleaning is required prior to application. Removal of dirt from metal surfaces will aid in reduced consumption of CarWell CP-90. Surfaces can be painted after treatment.

Many landscape companies and golf course owners on Oahu have discovered that timely applications to their mowers will result in extending the life of their equipment and less loss due to corrosion issues. The fertilizers are highly active in promoting corrosion and regular treatments with CarWell Cp-90 have saved equipment.

Customers such as Turtle Bay Golf Course, B.Hayman, Quality Turfgrass, Landscape Equipment Hawaii, Hawaiian Dredging Loch, and C&C Parks & Rec to name a few are currently and have been treating their equipment with **CarWell CP-90** for years.

Note:

Go to Products Link on our site for details on CarWell CP90/Rust Cop/Tricon Applicator.

Go to Buy Now Link on our site for CarWell CP90/Rust Cop retail locations.

Go to Contact Link on our site for industrial sales/Tricon Applicator and further questions



Solutions for Rust and Corrosion

94-463 Alapine Street, Waipahu, Hawaii 96797 Phone (808) 676-1963 Fax (808) 678-1677

www.corrosioncops.com