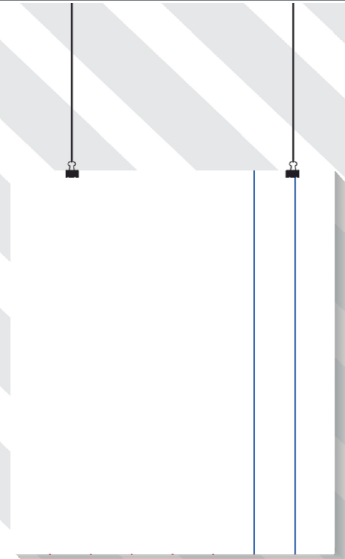


BLUE LINE

INKJET PRINTER DARK FABRIC HEAT TRANSFER PAPER

BLUE LINE

- DESIGNED SPECIFICALLY FOR USE ON BLACK OR DARK COLORED TEXTILES, JEANS, LEATHER .
- IT CAN BE APPLIED ON COTTON FABRICS, BLEND COTTON-POLYESTER AND 100% POLYESTER, ALTHOUGH IT'S APPLICATION IS NOT RECOMMENDED ON POLYESTER FABRICS PREVIOUSLY TINTED BY SUBLIMATION.
- SOLID AND BRIGHT COLORS AFTER OF SEVERAL WASHES.
- SOFT TOUCH ON THE PRINT.



CREATES
DESINGS
IN JUST
3 STEPS

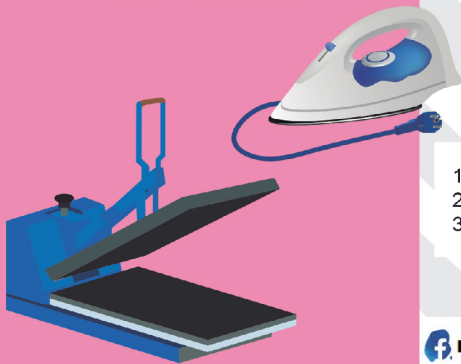
1. DESING



2. PRINT



3. IRON



- PRINTING IN DIRECT MODE, NOT MIRROR.

INSTRUCTIONS OF IMPRESSION:

- PAPER TYPE: NORMAL OR BEST.



HOW IT WORKS

1. CUT THE TRANSFER DESIGN PRINTED BY HAND OR WITH A CUTTING PLOTTER.
2. ADJUSTS THE TRANSFER PLATE AT **160°C AND MEDIUM PRESSURE**.
3. PUT THE SHIRT ON THE IRON AND PRE-PRESS FOR 4-5 SECONDS TO ELIMINATE WRINKLES.
4. PEEL OFF THE PRINTED DESIGN TO SEPARATE IT FROM THE BACKING PAPER.
5. PLACE THE PRINTED DESIGN ON THE SHIRT WITH THE UNPRINTED SIDE IN CONTACT WITH THE SHIRT.
6. PLACE A SHEET OF SILICON AND PROTECTIVE PAPER ON TOP.
7. CLOSE THE IRON AT **160°C, MEDIUM PRESSURE AND 20 SECONDS**.
8. OPEN THE IRON, ALLOW TO COOL AND REMOVE THE SHEET OF COLD SILICONE.

CARE AND WASHING

1. COLD WASH AND UPSIDE DOWN.
2. DRYER IS NOT RECOMMENDED.
3. BACK IRONING.



SCAN ME