



Idaho Falls Area Humanitarian Center (IFAHC) Newsletter



Volume VIII

Issue 2

February 2022

ASSISTANT DIRECTOR'S MESSAGE



Valerie Duffin

A message to you from Gordon B. Hinckley

"I believe in the gospel of work. There is not a substitute under the heavens for productive labor. It is the process by which dreams become reality, it is the process by which idle visions become dynamic achievements. We are all inherently lazy. We would rather play than work. We would rather loaf than work. A little plan and a little loafing are good, but it is work that spells the difference in the life of a man or a woman. It is stretch-



(Continued on page 2)

IF RESCUE MISSION PRESENTATION

Danielle Steiner, food service manager of the Idaho Falls Rescue Mission, gave an informative presentation on January 26 about how we assist their organization. The Rescue Mission oversees City of Refuge, all men 21 bed facility, Ruth House, a 25-bed facility serving only women and children, Serving Hope which provides food service, and the Navigate Program. They also offer meal support for clients of the Crisis Center which addresses behavioral needs. Formerly INL kitchen manager, Danielle found herself looking for a volunteer opportunity when COVID caused the kitchen to close.

The mission has been open every day during COVID. During lock downs they served meals out the windows. They serve three meals a day to about 45 people, depending on how many guests occupy City of Refuge, Ruth House, and the Crisis Center. Like IFAHC, their staff is 100 percent voluntary; they receive no government subsidy funds.

IFAHC items most often needed are hygiene kits, laundry bags, and quilts. Every guest receives these three items

whether they stay for one night or 90 days. In 2021, City of Refuge and Ruth house had 273 and 250 guest nights respectively. Their program is a "step up, not a handout." Guests must be clean and sober, and daily testing is performed. They must find a job and be actively working toward self-reliance. While a typical stay is one week, there is a 90-day program called Navigate where guests take classes on financial management and other subjects. Case management is offered in the first 48 hours. They partner with Idahoan Foods and Yellowstone Plastics to provide employment for guests. Since the Haven is now closed, they are the only homeless shelter in the greater Idaho Falls area.

The rescue mission has seen a sharp increase in guests due to job loss and homelessness. Some guests who have employment and have lived in their apartments for 8 to 15 years are being forced out by landlords who have decided to "put lipstick on a pig" and renovate low-income housing into high end housing so they can double their revenue, Steiner said. Current tenants have been evicted and have no where to go. Sadly, families are often separated because City of Refuge takes only men, and Ruth House takes only women and children. With both parents working, sometimes the only time during the day a family has together is their 30-minute dinner meal. Paper and products and bleach are always in high de-

(Continued on page 2)



Hours: Tuesday & Wednesday 10 am – 3 pm

The Idaho Falls Area Humanitarian Center is a non-profit / non-denominational organization
PLEASE SHARE THIS NEWSLETTER WITH YOUR FRIENDS AND NEIGHBORS

ASSISTANT DIRECTOR...

(Continued from page 1)



ing our minds and utilizing the skills of our hands that lifts us from the stagnation of mediocrity.”

Thank you for all the work of your hearts and hand that makes the Center a place of achievement and

productivity. And since it's February, here are some thought of love...

“The greatest happiness of life is the conviction that we are loved; loved for ourselves, or rather, loved in spite of ourselves.” — Victor Hugo

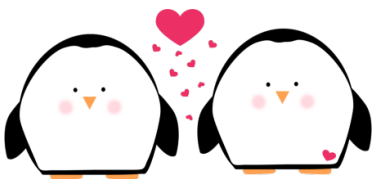
“Lots of people want to ride with you in the limo, but what you want is someone who will take the bus with you when the limo breaks down.” —Oprah Winfrey

IF RESCUE MISSION ...

(Continued from page 1)

mand at the mission. Volunteers are always needed to help prepare and serve meals. A total of four adult volunteers per evening meal are needed. Children ages 12 to 18 can plate and serve food at tables and refill beverage glasses. The Soup Kitchen is not always open due to COVID. They typically have

local congregations sign up to serve lunch. For more information on how to volunteer or donate, contact Danielle Steiner, 208-541-8453.



LAST MONTH'S IMPACT

Individual volunteers.....	234
Onsite service hours.....	2,775
Offsite service hours.....	10,789
First-time volunteers	33
Total center items produced	2,552
Total at-home items checked in	6,557

IFAHC 2021 ACTIVITY SUMMARY

	# Items Delivered	Delivered Item Value
Deliveries from Inventory	34,544	\$781,411
Deliveries from Community	28,195	\$511,311
Total Deliveries	62,793	\$1, 292,722
Special Delivery Categories from Inventory		
Fleece Blankets	881	\$12,234
Weighted Blankets	439	\$32,985
Hygiene Kits	5,878	\$127,037
Quilts	2,156	\$304,400
Folder Games	9,657	\$38,628
Newborn Kits	397	\$59,550
School Bags	606	\$129,279
Total Service Hours Given	181,473	
Total Volunteers	7,397	

Community Room Needs
LAUNDRY DETERGENT, PILLOWS,
TOWELS, SHEETS, GLOVES, ALL SIZES

WAYS TO DONATE



In person or by mail: 1413 Northgate Mile, Idaho Falls, ID 83401, PayPal, or Venmo: Scan the QR code here or go to our website at idaho-falls-area-humanitarian-center.org



THE LAST WORD



“I slept and dreamt that life was joy. I awoke and saw that life was service. I acted and behold, service was joy.”
 — Tagore