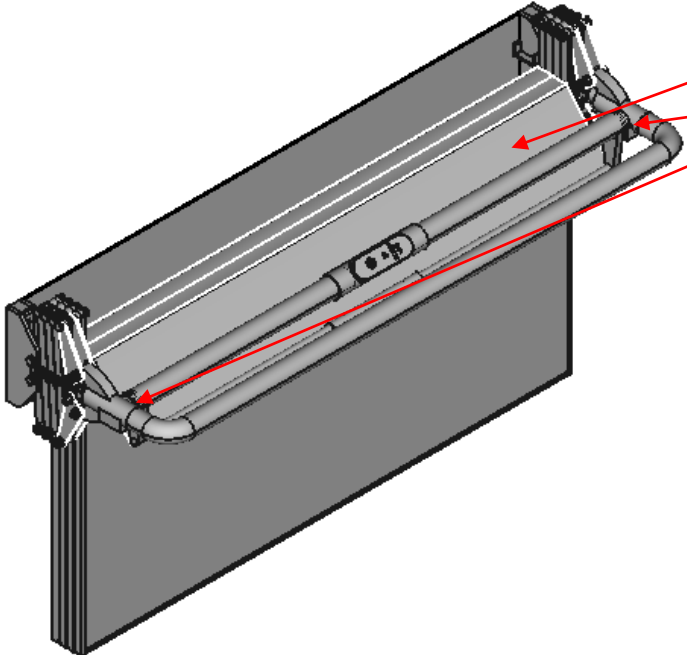
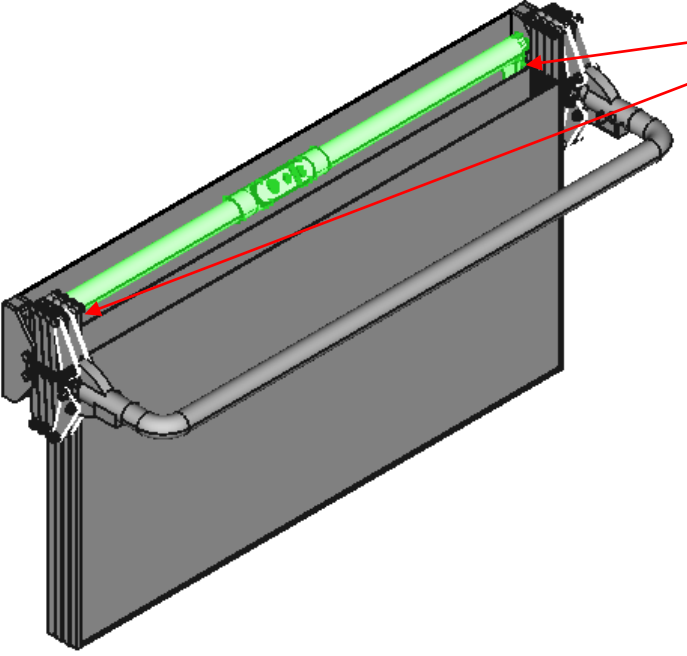
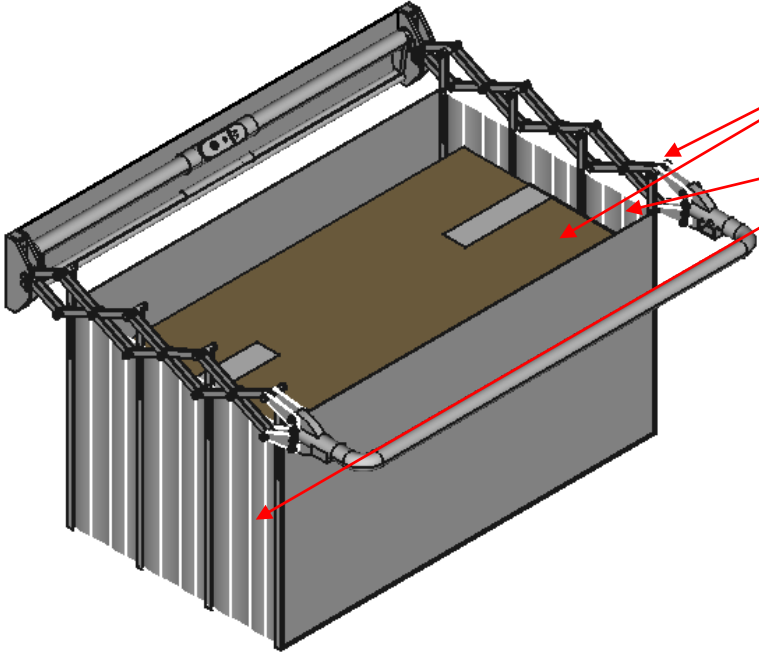


ITEM	PICTURE	DESCRIPTION
1		<p>UNUSED POSITION FOLDED.</p> <ul style="list-style-type: none"> • Upper fabric covers storage compartment. • The locking handle is positioned so that the solenoid, de-energized, locks the assembly.
2		<p>POSITION PRIOR TO DEPLOYMENT</p> <ul style="list-style-type: none"> • The locking handle is placed back to allow unfolding by pulling the front handle.

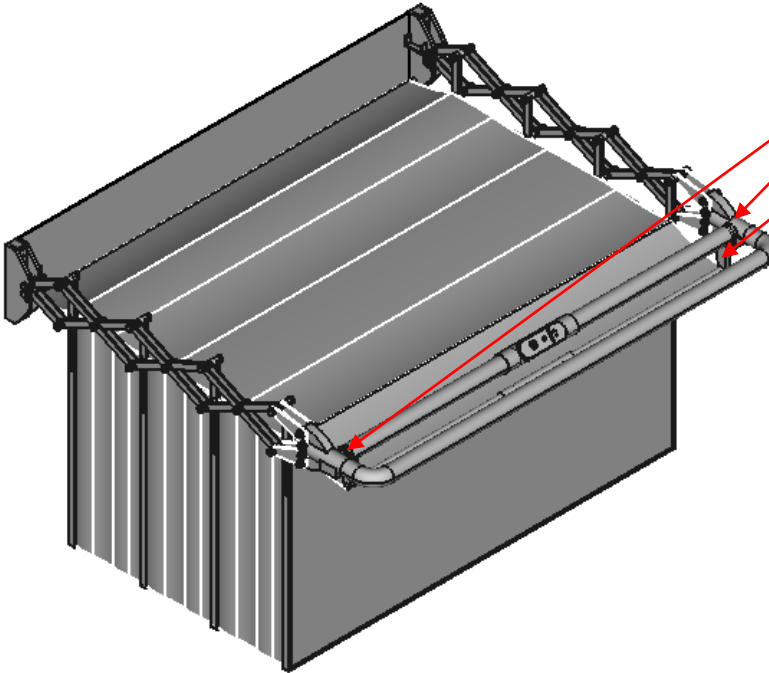
3



UNFOLDED WITH THE PACKAGE

- The scissors unfolds forward according to the size of the package.
- Stretch fabrics between cargo compartment frames stretch.

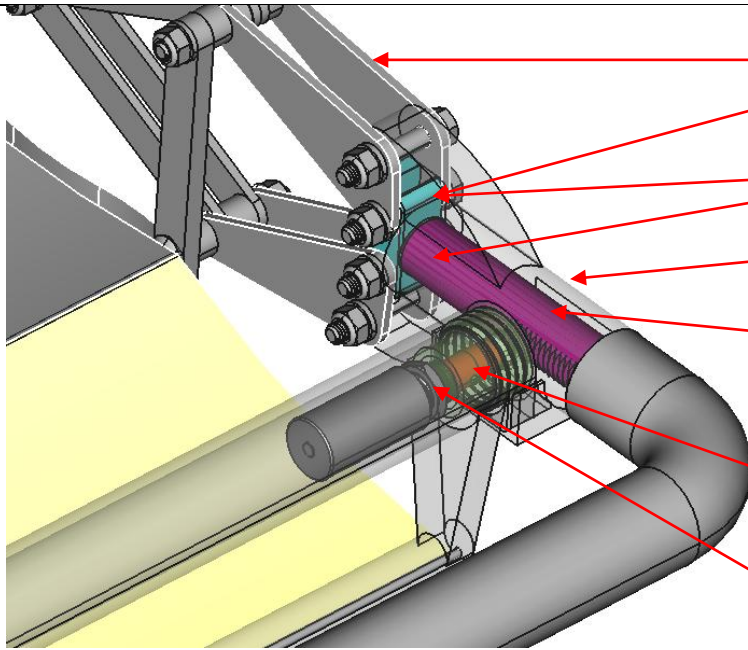
4



DEPLOYED POSITION LOCKED

- Locking handle is in position to lock scissors movement.
- The locking handle pulls and tightens the upper fabric forcing it tight over the frames of the pack compartment.

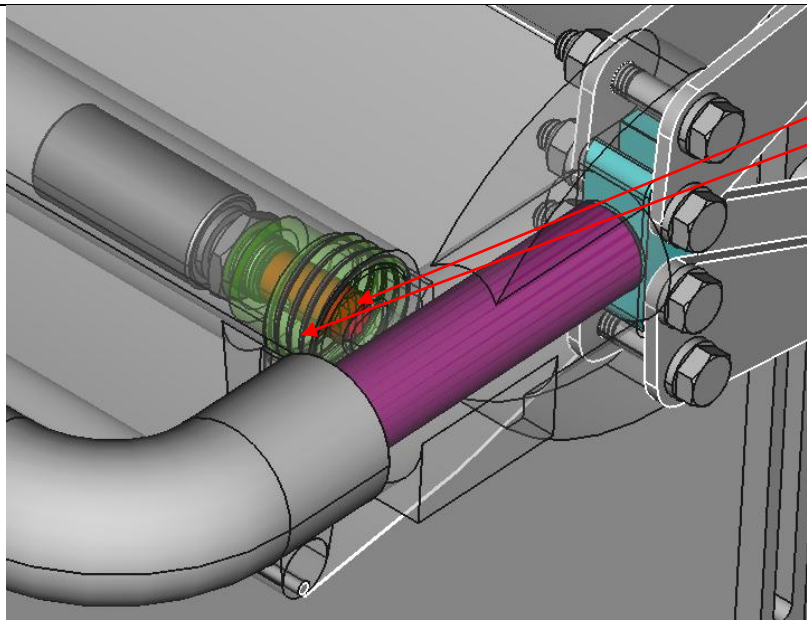
5



SCISSORS LOCKING MECHANISM.

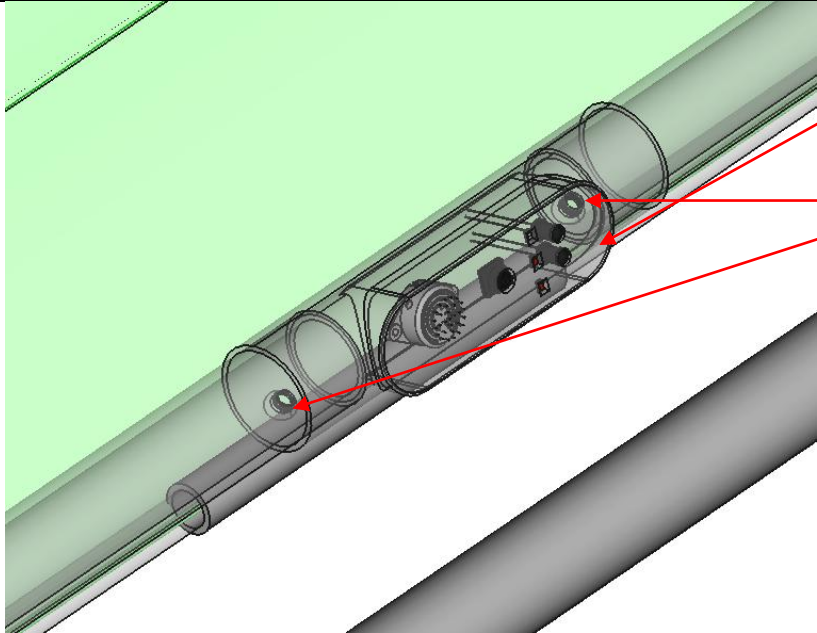
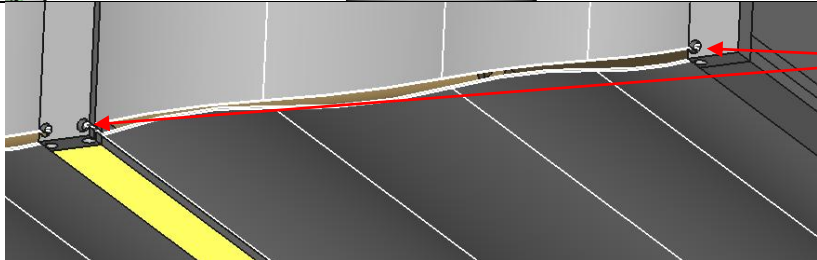
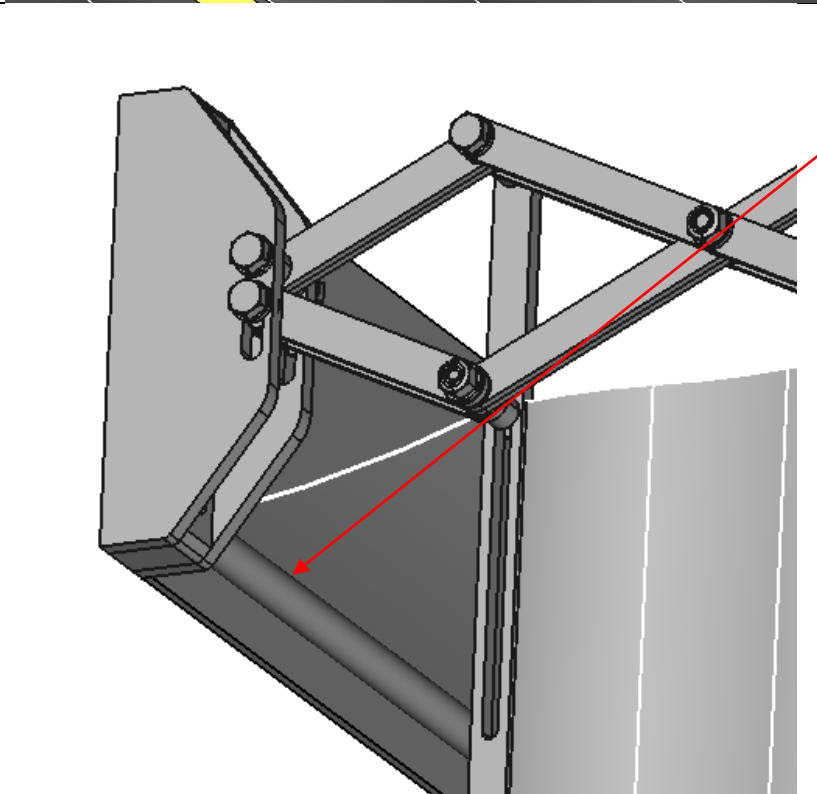
- Piston Scissors - Moves the piston elbow when unfolding or closing the scissors.
- Piston elbow: moves the piston.
- Piston Cylinder: Holds the entire piston locking mechanism.
- Piston: has serrated teeth so that the ratchet locks it in the position of the scissors appropriate to the size of the package.
- Ratchet - Has saw teeth that fit the piston saw teeth to lock it in the proper scissor position for the package size.
- Solenoid: extends when they have no power, pressing the ratchet to lock the piston. The stem retracts when the solenoid is energized, releasing the piston and allowing the scissors to move.

6



SCISSORS LOCKING MECHANISM.

- Ratchet saw teeth.
- Threaded plug for disassembling the solenoid group.

7		<p>LOCK HANDLE AND CONTROL PANEL</p> <ul style="list-style-type: none"> The entire control mechanism, sensors and LEDs are inserted in this central compartment. Screws for disassembling the control compartment.
8		<p>FABRIC TENSION SYSTEM</p> <ul style="list-style-type: none"> Longitudinal grooves to insert double stretch fabrics for tension.
9		<p>UPPER FABRIC TENSION</p> <ul style="list-style-type: none"> Upper fabric tension bar attaches to bases.