

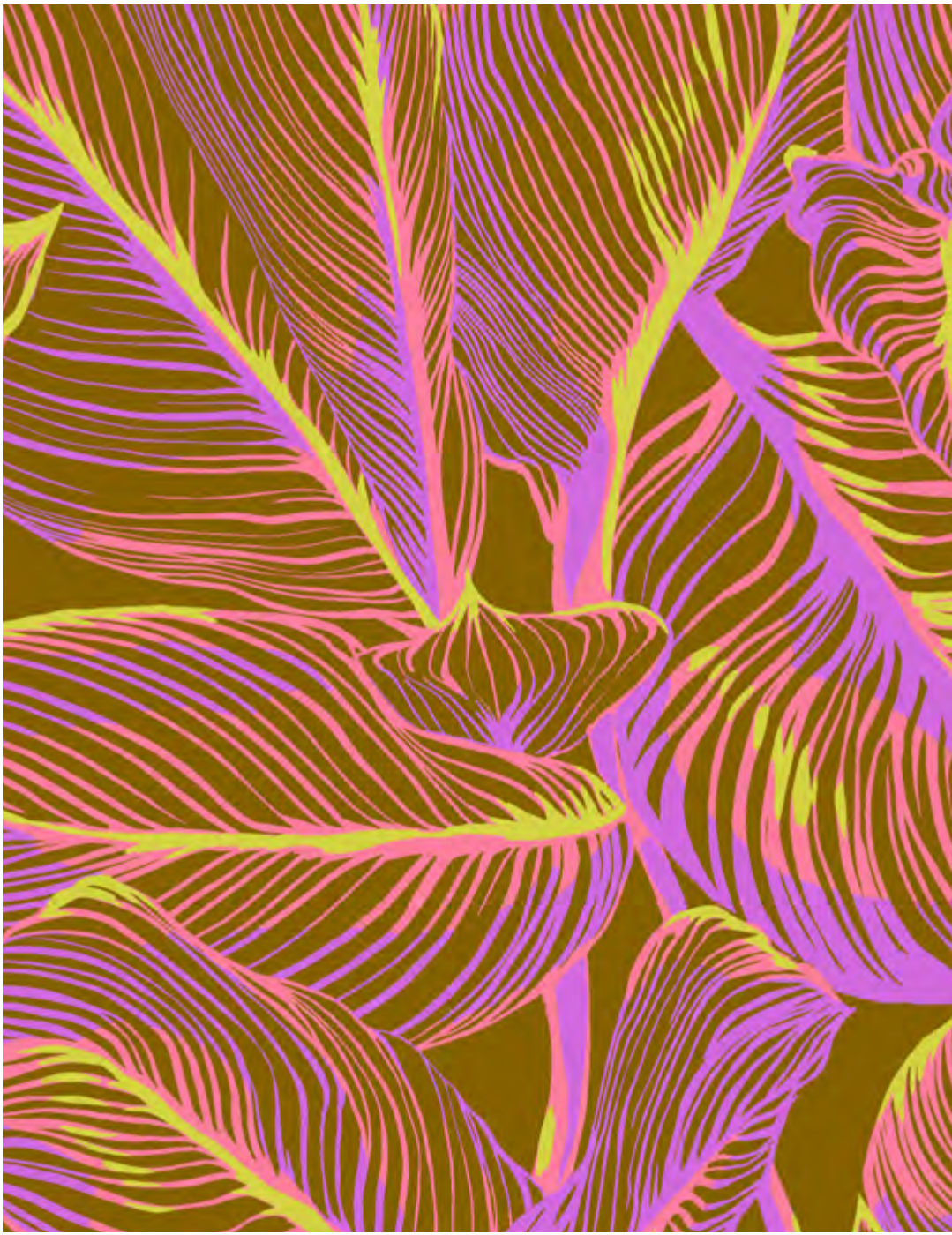


*Free Spirit*

# Made My Day

BY **ANNA MARIA**

Delivering December 2021  
20 SKUs  
1, 108" Combed Cotton Quilt Back



Canna PWAH162.TOFFEE

Repeat: 10.5"W x 18"H



Rough Draft PWAH168.SUNSHINE

Repeat: 9"W x 12"H



Secret Admirer PWAH169.HUSH

Repeat: 14.5"W x 12"H



Delphinium PWAH165.PATINA

Inset shown at full width of fabric.

Repeat: 15"W x 18"H

Coordinating Solids & Love Always, AM Prints (Shown at 25% Scale)



CSFSESS.MARIGOLD\*  
 CSFSESS.COSMO\*  
 CSFSESS.PEACO  
 CSFSESS.DEWDROP\*



Postage Due PWAH068.JADE



Source Code PWAH119.MIDNIGHT



Echinacea Glow PWAH149.GLOW

This presentation is a fair representation of design, scale and color of each fabric. The final fabrics may have very minimal changes.



Love Hue PWAH166.FOREVER

Repeat: 11"W x 8"H



Coreopsis PWAH164.PLUM

Repeat: 11.75"W x 9"H



Cheer PWAH163.CHERRY



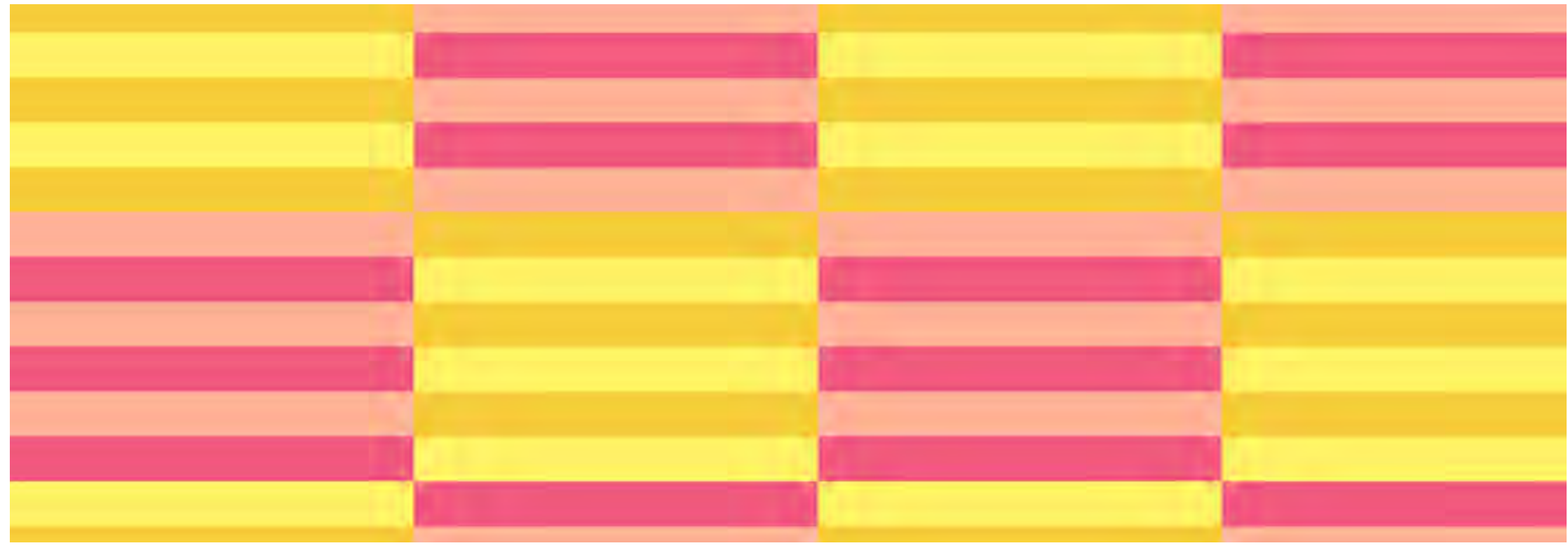
Cheer PWAH163.DAY



New Flame PWAH167.DEEPLY

Inset shown at full width of fabric.

Repeat: 22.5"W x 12"H



To and From PWAH170.TAFFY

Repeat: 6"W x 4"H

This presentation is a fair representation of design, scale and color of each fabric. The final fabrics may have very minimal changes.



Canna PWAH162.JADE

Repeat: 10.5"W x 18"H



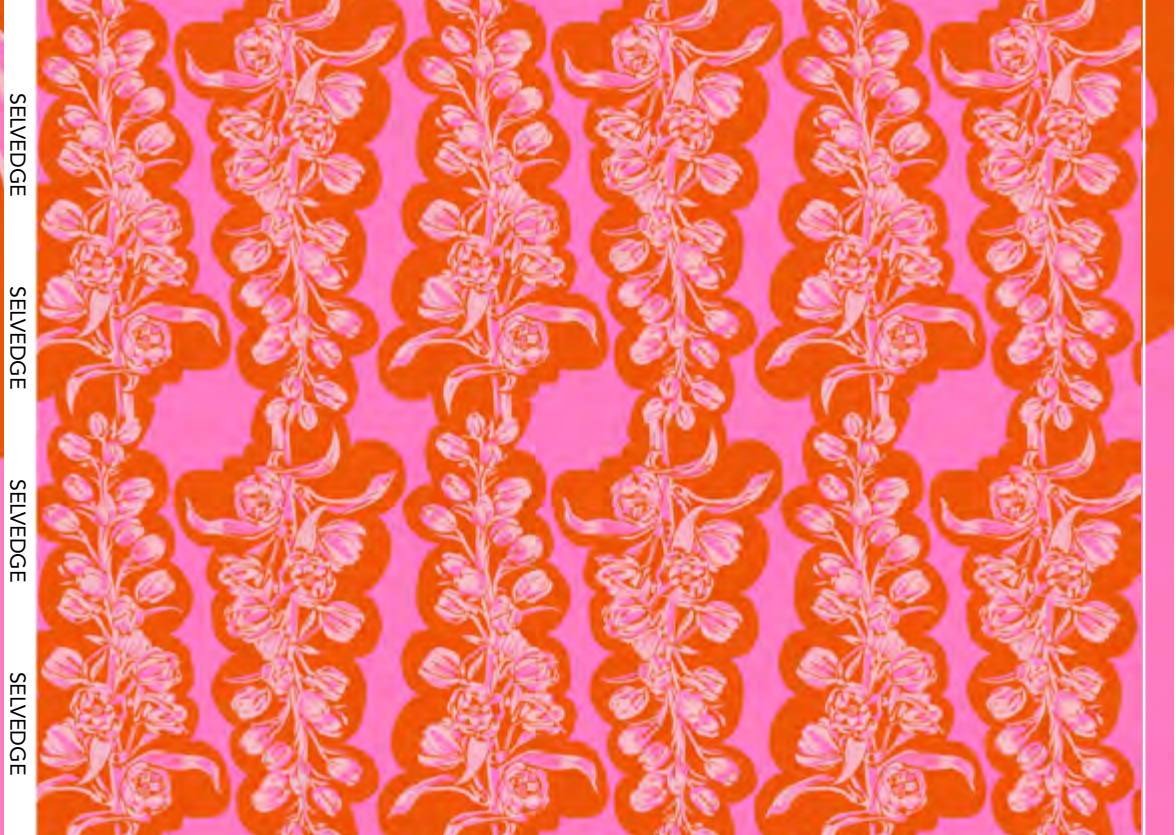
Rough Draft PWAH168.FUCHSIA

Repeat: 9"W x 12"H



Secret Admirer PWAH169.GLANCE

Repeat: 14.5"W x 12"H



Delphinium PWAH165.PASSION

Inset shown at full width of fabric.

Repeat: 15"W x 18"H

Coordinating Solids & Love Always, AM Prints (Shown at 25% Scale)



CSFSESS.MARIGOLD\*

CSFSESS.COSMO\*

CSFSESS.PEACO

CSFSESS.DEWDROP\*



Postage Due PWAH068.AMBER



Clippings PWAH038.LICHEN



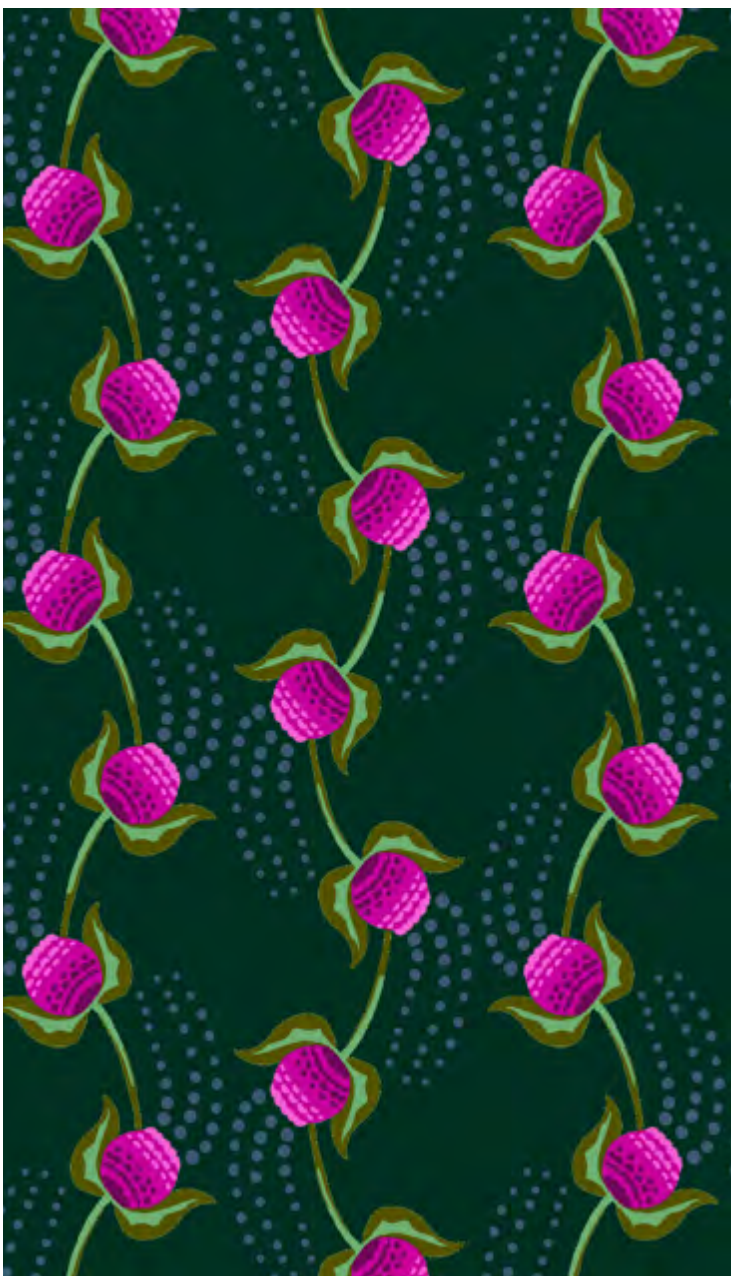
Social Climber PWAH117.ICE

This presentation is a fair representation of design, scale and color of each fabric. The final fabrics may have very minimal changes.

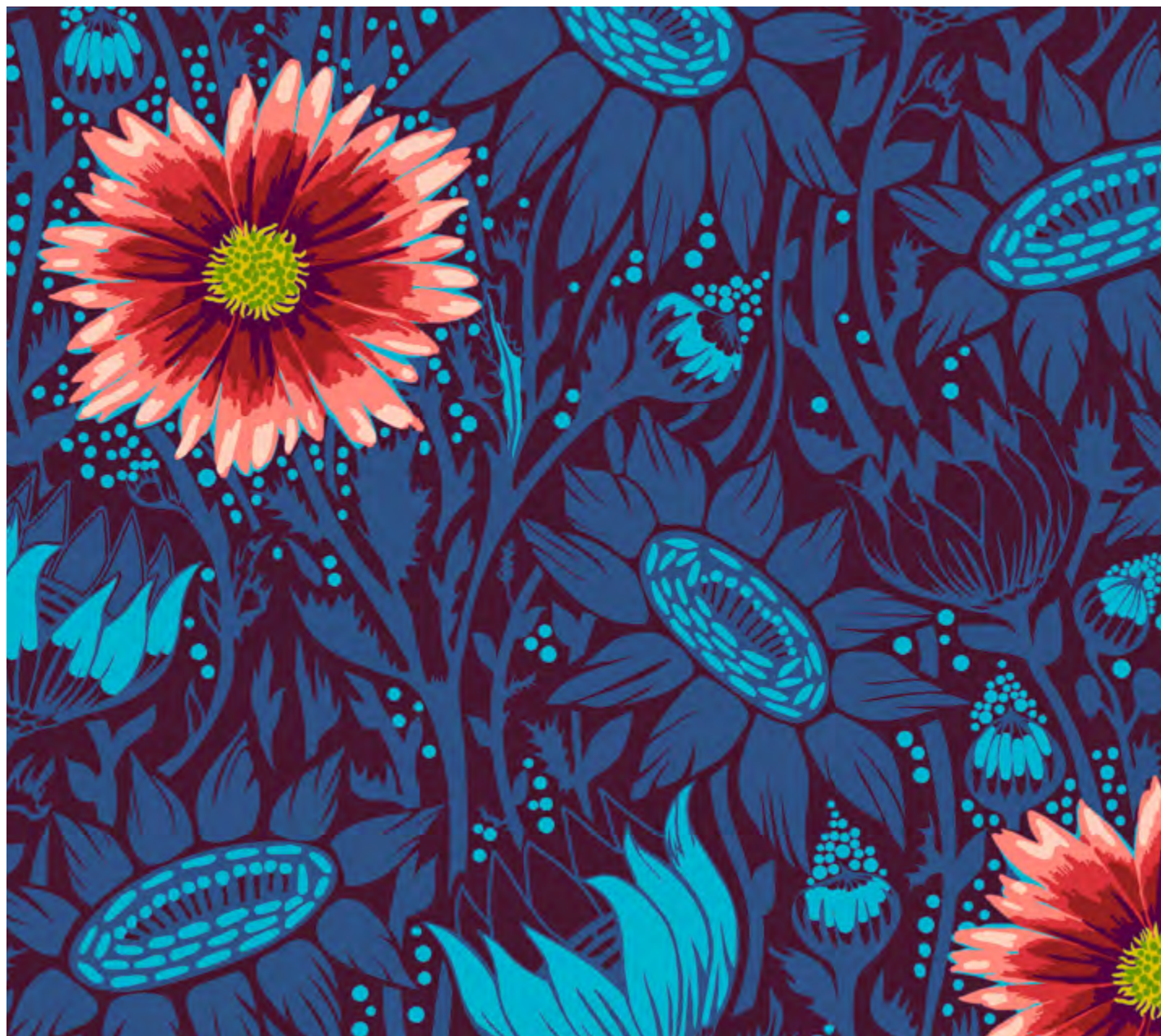


Love Hue PWAH166.ALWAYS

Repeat: 11"W x 8"H

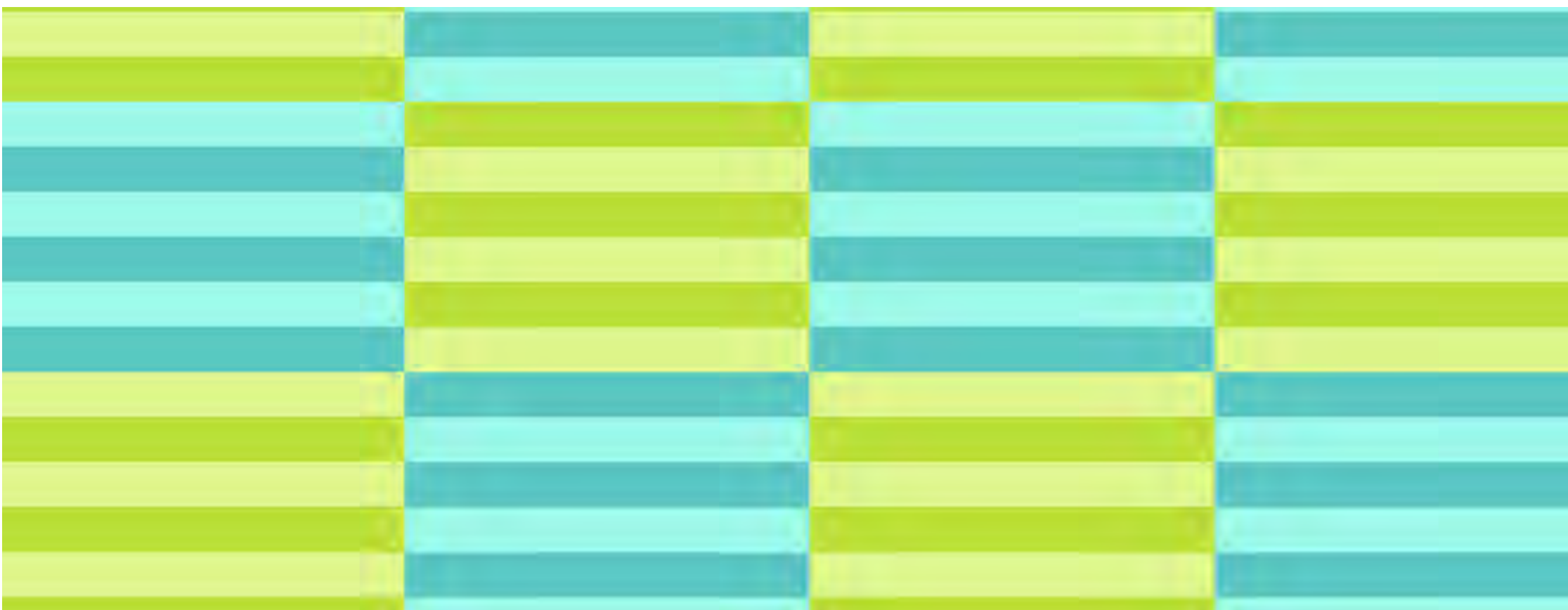


Cheer PWAH163.FOREST



Coreopsis PWAH164.SHADOW

Repeat: 11.75"W x 9"H



To and From PWAH170.LEAF

Repeat: 6"W x 4"H





SELVAGE  
SELVAGE  
SELVAGE



New Flame PWAH167.SWEETLY

Inset shown at full width of fabric.

Repeat: 22.5"W x 12"H



Secret Admirer PWAH169.WHISPER

Repeat: 14.5"W x 12"H

This presentation is a fair representation of design, scale and color of each fabric. The final fabrics may have very minimal changes.

# Delphinium 108" Combed Cotton Quilt Back

18 Yard Bolt



Delphinium QBAH004.JEWEL

Inset shown at full width of fabric.

Repeat: 20"W x 24"H

# Made My Day BY ANNA MARIA

## Fabric Pre-Cuts



**FB2FQAM.MYDAY**



**FB4DRAM.MYDAY**



**FB6CPAM.MYDAY**



**FB610AM.MYDAY**



\*Indicates fabric is included 3 times in charms

# Made My Day Quilt



Designed by Anna Maria  
 Finished Size: 84" (2.13m) Square  
 Technique: Pieced

Buy the COMPLETE collection and receive the Made My Day quilt pattern.  
 Exclusive to participating retailers.

## Made My Day Quilt Ordering Guide

SKU	Yards	Meters	12 kits	24 Kits
PWAH167.SWEETLY	1 1/2 yards	1.37m	2 bolts	3 bolts
PWAH167.DEEPLY	1 1/2 yards	1.37m	2 bolts	3 bolts
PWAH165.PASSION	1 1/2 yards	1.37m	2 bolts	3 bolts
PWAH164.SHADOW	1 1/2 yards	1.37m	2 bolts	3 bolts
PWAH164.PLUM	1 1/4 yards	1.14m	1 bolt	2 bolts
PWAH166.FOREVER	1 1/8 yards	1.03m	1 bolt	2 bolts
PWAH169.HUSH	1 1/8 yards	1.03m	1 bolt	2 bolts
PWAH166.ALWAYS	1 yard	0.91m	1 bolt	2 bolts
PWAH165.PATINA	1 yard	0.91m	1 bolt	2 bolts
PWAH163.FOREST	3/4 yard	0.69m	1 bolt	2 bolts
CSFSESS.CHERR*	3/4 yard	0.69m	1 bolt	2 bolts
CSFSESS.SAPPH	5/8 yard	0.57m	1 bolt	1 bolt
PWAH163.CHERRY	1/2 yard	0.46m	1 bolt	1 bolt
PWAH170.TAFFY	1/2 yard	0.46m	1 bolt	1 bolt
PWAH170.LEAF	1/2 yard	0.46m	1 bolt	1 bolt
PWAH168.FUCHSIA	1/2 yard	0.46m	1 bolt	1 bolt
PWAH163.DAY	1/2 yard	0.46m	1 bolt	1 bolt
PWAH162.JADE	1/2 yard	0.46m	1 bolt	1 bolt
PWAH169.GLANCE	1/4 yard	0.23m	1 bolt	1 bolt
PWAH168.SUNSHINE	1/4 yard	0.23m	1 bolt	1 bolt
PWAH162.TOFFEE	1/4 yard	0.23m	1 bolt	1 bolt
PWAH169.WHISPER	1/4 yard	0.23m	1 bolt	1 bolt
<b>Backing Fabric Options</b>				
PWAH167.DEEPLY - 44" Width	7 2/3 yards	7.01m	7 bolts	13 bolts
QBAH004.JEWEL - 108" Width	2 5/8 yards	2.40m	2 bolts	4 bolts
* Indicates Binding Fabric				
All fabric quantities are based on 15yd Bolts unless otherwise indicated.				
+108" Quilt Back is on 18 yard bolts				



44" Backing Fabric Option  
 PWAH167.DEEPLY



108" Backing Fabric Option  
 QBAH004.JEWEL

Yardage amounts above are estimates to buy against, not kit against.  
 For kitting please refer to the final pattern. It is recommended you make a quilt top prior to kitting.

# Criss Crossroads Quilts



Designed by Everyday Stitches  
 Finished Size: 66" x 80" (1.68m x 2.03m)  
 Technique: Pieced  
 Pattern available at [everydaystitches.com](http://everydaystitches.com)

## Criss Crossroads Shadow (Left) Quilt Ordering Guide

SKU	Yards	Meters	12 kits	24 Kits
PWAH163.FOREST*	5/8 yard	0.57m	1 bolt	1 bolt
PWAH164.SHADOW	2 yards	1.83m	2 bolts	4 bolts
PWAH165.PATINA	1 3/4 yards	1.60m	2 bolts	3 bolts
PWAH166.FOREVER	1/4 yard	0.23m	1 bolt	1 bolt
PWAH167.SWEETLY	2 1/2 yards	2.29m	2 bolts	4 bolts
PWAH169.GLANCE	1 1/2 yards	1.37m	2 bolts	3 bolts

### Backing Fabric Options

PWAH165.PATINA - 44" Width	4 1/2 yards	4.11m	4 bolts	8 bolts
QBAH004.JEWEL - 108" Width	2 1/4 yards	2.06m	2 bolts	3 bolts

\* Indicates Binding Fabric

All fabric quantities are based on 15yd Bolts unless otherwise indicated.

+108" Quilt Back is on 18 yard bolts

## Criss Crossroads Passion (Right) Quilt Ordering Guide

SKU	Yards	Meters	12 kits	24 Kits
PWAH163.FOREST*	5/8 yard	0.57m	1 bolt	1 bolt
PWAH165.PASSION	2 yards	1.83m	2 bolts	4 bolts
PWAH164.SHADOW	1 3/4 yards	1.60m	2 bolts	3 bolts
PWAH163.CHERRY	1/4 yard	0.23m	1 bolt	1 bolt
PWAH170.LEAF	2 1/2 yards	2.29m	2 bolts	4 bolts
PWAH167.SWEETLY	1 1/2 yards	1.37m	2 bolts	3 bolts

### Backing Fabric Options

PWAH167.SWEETLY - 44" Width	4 1/2 yards	4.11m	4 bolts	8 bolts
QBAH004.JEWEL - 108" Width	2 1/4 yards	2.06m	2 bolts	3 bolts

\* Indicates Binding Fabric

All fabric quantities are based on 15yd Bolts unless otherwise indicated.

+108" Quilt Back is on 18 yard bolts

Yardage amounts above are estimates to buy against, not kit against.  
 For kitting please refer to the final pattern. It is recommended you make a quilt top prior to kitting.

# Box Spring Quilt



Designed by Charisma Horton  
 Finished Size: 72" x 96" (1.83m x 2.44m)  
 Technique: Pieced  
 Pattern available at [charismacorner.com](http://charismacorner.com)

## Box Spring Quilt Ordering Guide

SKU	Yards	Meters	12 kits	24 Kits
PWAH163.CHERRY	1 yard	0.91m	1 bolt	2 bolts
PWAH164.PLUM*	1 7/8 yards	1.71m	2 bolts	3 bolts
PWAH165.PASSION	1 yard	0.91m	1 bolt	2 bolts
PWAH165.PATINA	1 1/8 yards	1.03m	1 bolt	2 bolts
PWAH166.ALWAYS	1 1/4 yards	1.14m	1 bolt	2 bolts
PWAH168.FUCHSIA	1 yard	0.91m	1 bolt	2 bolts
PWAH168.SUNSHINE	1 yard	0.91m	1 bolt	2 bolts
PWAH169.HUSH	1 yard	0.91m	1 bolt	2 bolts
PWAH169.WHISPER	1 yard	0.91m	1 bolt	2 bolts

### Backing Fabric Options

PWAH169.WHISPER - 44" Width	5 1/2 yards	5.03m	5 bolts	9 bolts
QBAH004.JEWEL - 108" Width <sup>+</sup>	2 3/4 yards	2.51m	2 bolts	4 bolts

\* Indicates Binding Fabric

All fabric quantities are based on 15yd Bolts unless otherwise indicated.

<sup>+</sup>108" Quilt Back is on 18 yard bolts



44" Backing Fabric Option  
 PWAH169.WHISPER



108" Backing Fabric Option  
 QBAH004.JEWEL

Yardage amounts above are estimates to buy against, not kit against.  
 For kitting please refer to the final pattern. It is recommended you make a quilt top prior to kitting.

# Courtyard Scrappy Quilt



Designed by Everyday Stitches  
 Finished Size: 64" x 85" (1.63m x 2.16m)  
 Technique: Curved Piecing using the Everyday Curve Template Set  
 Pattern available at [everydaystitches.com](http://everydaystitches.com)

## Courtyard Scrappy Quilt Ordering Guide

SKU	Yards	Meters	12 kits	24 Kits
PWAH162.JADE	1/3 yard	0.30m	1 bolt	1 bolt
PWAH162.TOFFEE	1/3 yard	0.30m	1 bolt	1 bolt
PWAH163.CHERRY	1/2 yard	0.46m	1 bolt	1 bolt
PWAH163.DAY	1/3 yard	0.30m	1 bolt	1 bolt
PWAH163.FOREST	1 1/4 yards	1.14m	1 bolt	2 bolts
PWAH164.PLUM	1/2 yard	0.46m	1 bolt	1 bolt
PWAH164.SHADOW	5/8 yard	0.57m	1 bolt	1 bolt
PWAH165.PASSION	1/3 yard	0.30m	1 bolt	1 bolt
PWAH165.PATINA	1/3 yard	0.30m	1 bolt	1 bolt
PWAH166.ALWAYS	5/8 yard	0.57m	1 bolt	1 bolt
PWAH166.FOREVER	1/3 yard	0.30m	1 bolt	1 bolt
PWAH167.DEEPLY	1/2 yard	0.46m	1 bolt	1 bolt
PWAH167.SWEETLY	1/3 yard	0.30m	1 bolt	1 bolt
PWAH168.FUCHSIA	5/8 yard	0.57m	1 bolt	1 bolt
PWAH168.SUNSHINE	1/3 yard	0.30m	1 bolt	1 bolt
PWAH169.GLANCE	1/2 yard	0.46m	1 bolt	1 bolt
PWAH169.HUSH	1/3 yard	0.30m	1 bolt	1 bolt
PWAH169.WHISPER	1/3 yard	0.30m	1 bolt	1 bolt
PWAH170.LEAF*	1 1/4 yards	1.14m	1 bolt	2 bolts
PWAH170.TAFFY	1/3 yard	0.30m	1 bolt	1 bolt
<b>Backing Fabric Options</b>				
PWAH166.FOREVER - 44" Width	4 3/4 yards	4.34m	4 bolts	8 bolts
QBAH004.JEWEL - 108" Width	2 1/2 yards	2.29m	2 bolts	4 bolts
* Indicates Binding Fabric All fabric quantities are based on 15yd Bolts unless otherwise indicated. +108" Quilt Back is on 18 yard bolts				



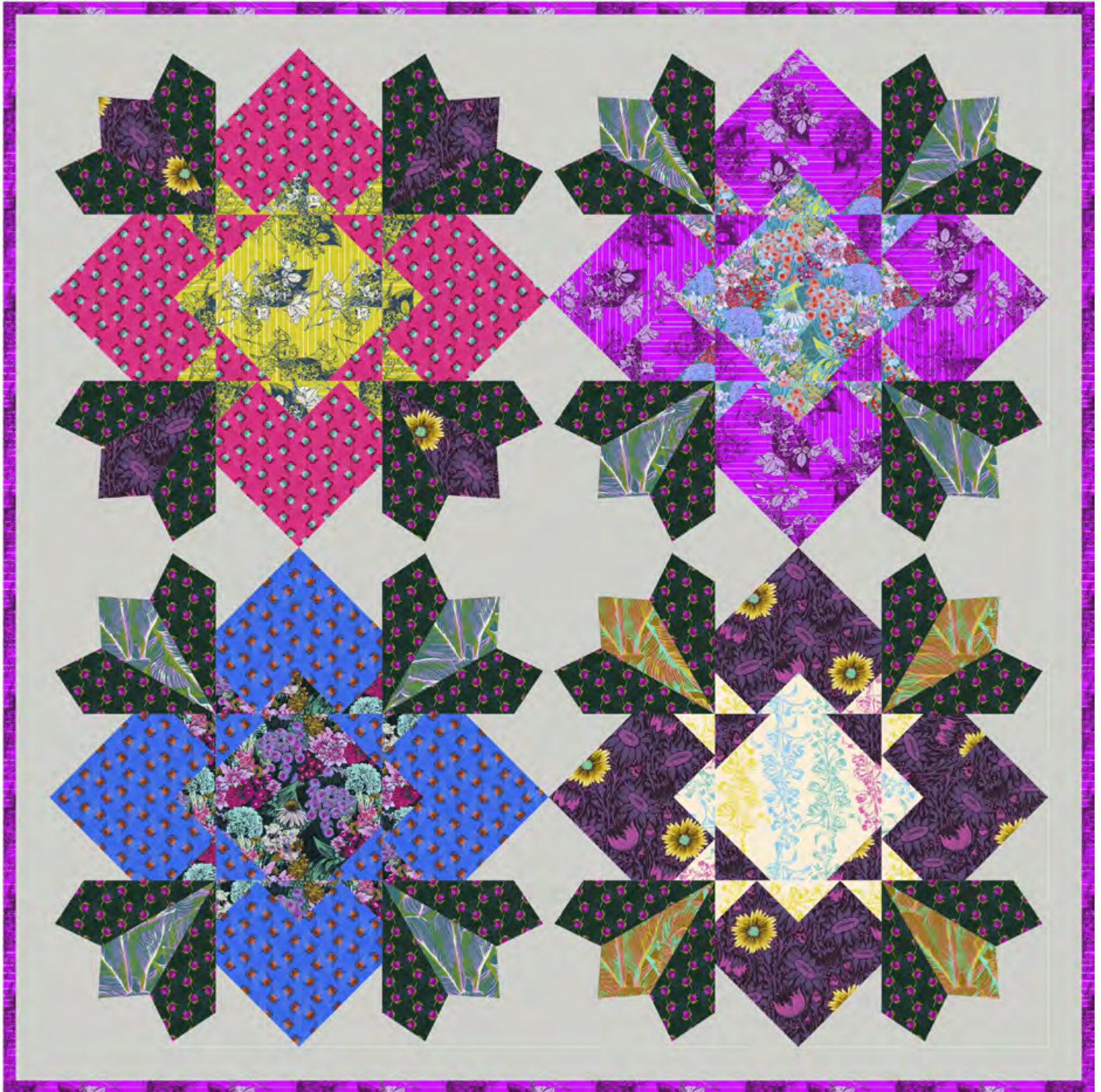
44" Backing Fabric Option  
 PWAH166.FOREVER



108" Backing Fabric Option  
 QBAH004.JEWEL

Yardage amounts above are estimates to buy against, not kit against.  
 For kitting please refer to the final pattern. It is recommended you make a quilt top prior to kitting.

# I Like Big Blooms Quilt



Designed by Charisma Horton  
 Finished Size: 64" (1.63m) Square  
 Techniques: Pieced & Appliquéd  
 Pattern available at [charismacorner.com](http://charismacorner.com)

## I Like Big Blooms Quilt Ordering Guide

SKU	Yards	Meters	12 kits	24 Kits
PWAH162.JADE	1/2 yard	0.46m	1 bolt	1 bolt
PWAH162.TOFFEE	1/4 yard	0.23m	1 bolt	1 bolt
PWAH163.CHERRY	1/2 yard	0.46m	1 bolt	1 bolt
PWAH163.DAY	1/2 yard	0.46m	1 bolt	1 bolt
PWAH163.FOREST	1 1/3 yards	1.22m	2 bolts	3 bolts
PWAH164.PLUM	3/4 yard	0.69m	1 bolt	2 bolts
PWAH166.ALWAYS	1/4 yard	0.23m	1 bolt	1 bolt
PWAH168.FUCHSIA*	1 yard	0.91m	1 bolt	2 bolts
PWAH168.SUNSHINE	1/4 yard	0.23m	1 bolt	1 bolt
PWAH169.HUSH	1/4 yard	0.23m	1 bolt	1 bolt
PWAH169.WHISPER	1/4 yard	0.23m	1 bolt	1 bolt
CSFSESS.DAZZLE	3 yards	2.74m	3 bolts	5 bolts

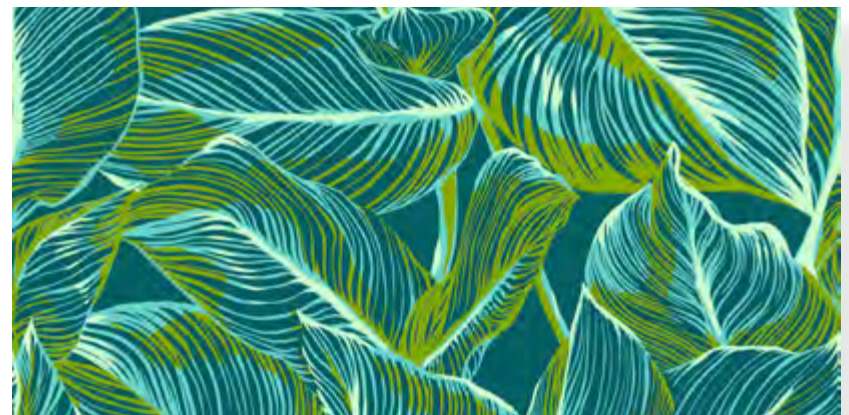
### Backing Fabric Options

PWAH162.JADE - 44" Width	3 3/4 yards	3.43m	3 bolts	6 bolts
QBAH004.JEWEL - 108" Width <sup>+</sup>	2 yards	1.83m	2 bolts	3 bolts

\* Indicates Binding Fabric

All fabric quantities are based on 15yd Bolts unless otherwise indicated.

<sup>+</sup>108" Quilt Back is on 18 yard bolts



44" Backing Fabric Option - PWAH162.JADE



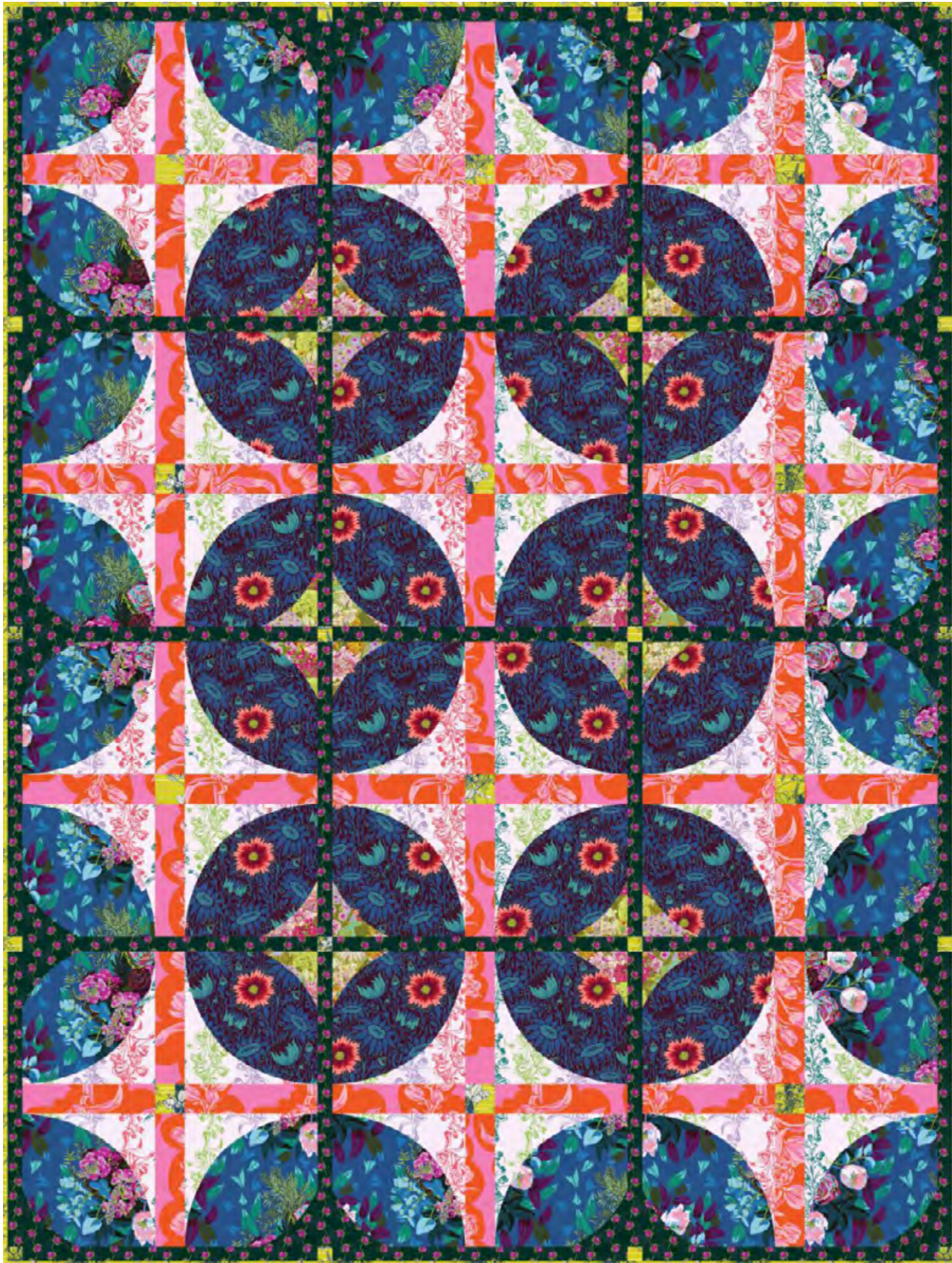
108" Backing Fabric Option - QBAH004.JEWEL

Yardage amounts above are estimates to buy against, not kit against.  
 For kitting please refer to the final pattern. It is recommended you make a quilt top prior to kitting.

This presentation is a fair representation of design, scale and color of each fabric. The final fabrics may have very minimal changes.



# Courtyard Bordered Quilt



Designed by Everyday Stitches  
 Finished Size: 64" x 85" (1.63m x 2.16m)  
 Technique: Curved Piecing using the Everyday Curve Template Set  
 Pattern available at [everydaystitches.com](http://everydaystitches.com)

Courtyard Bordered Quilt Ordering Guide				
SKU	Yards	Meters	12 kits	24 Kits
PWAH163.FOREST	1 1/4 yards	1.14m	1 bolt	2 bolts
PWAH164.SHADOW	1 3/4 yards	1.60m	2 bolts	3 bolts
PWAH166.FOREVER	1 3/4 yards	1.60m	2 bolts	3 bolts
PWAH167.DEEPLY	1 3/4 yards	1.60m	2 bolts	3 bolts
PWAH168.SUNSHINE*	7/8 yard	0.80m	1 bolt	2 bolts
PWAH169.GLANCE	1/2 yard	0.46m	1 bolt	1 bolt
<b>Backing Fabric Options</b>				
PWAH169.GLANCE - 44" Width	4 3/4 yards	4.34m	4 bolts	8 bolts
QBAH004.JEWEL - 108" Width	2 1/2 yards	2.29m	2 bolts	4 bolts
* Indicates Binding Fabric				
All fabric quantities are based on 15yd Bolts unless otherwise indicated.				
+108" Quilt Back is on 18 yard bolts				



44" Backing Fabric Option - PWAH169.GLANCE



108" Backing Fabric Option - QBAH004.JEWEL

Yardage amounts above are estimates to buy against, not kit against.  
 For kitting please refer to the final pattern. It is recommended you make a quilt top prior to kitting.

# Made My Day

BY ANNA MARIA

Delivering December 2021  
20 SKUs  
1, 108" Combed Cotton Quilt Back



Never more than in the recent past, has one been able to say so much with flowers. A delivery of flowers can change your entire day and bring upon surprise and special feelings. I always take photographs of flowers: in my garden, ones that I happen upon and can't pass without a snap, or those that I see in the botanical gardens. Also, I have always photographed every bouquet that I've been gifted. I also like to document the bouquets that I create and gift. So, this collection isn't just about floral beauty, but it also represents moments of time and acts of kindness. It is lush, bright, deep, and emblematic of that feeling I get when someone has made my day.

 @annamariahorner  @AnnaMariaHornerStudio

*FreeSpirit*

FreeSpirit Fabrics  
11121 Carmel Commons Blvd  
Suite 280  
Charlotte, NC 28226  
1-866-907-3305



www.freespiritfabrics.com  
#freespiritfabrics

100% Cotton • 44/45" (114 cm) Wide  
15 Yds (13.7 m) D/R • Imported Screen Print

Care Instructions

Machine wash cold, normal cycle with like colors.  
Do not bleach. Tumble dry low. Warm iron.

⚠️ Not suitable for children's sleepwear.



100% Cotton • 108" (274 cm) Wide  
18 Yds (16.5 m) D/R • Imported Screen Print

Care Instructions

Machine wash cold, normal cycle with like colors.  
Do not bleach. Tumble dry low. Warm iron.

⚠️ Not suitable for children's sleepwear.



These designs are the property of FreeSpirit and are submitted to you in confidence for the sole purpose of soliciting your orders, in consideration of which you agree not to copy these designs or cause them to be copied directly or indirectly.

©2021 All Rights Reserved

**Note: Digital reference and fabrics will never match exactly.**