

Gecko Pillow

Featuring MagiCountry by Odile Bailloeuil

Can you spot the geckos? Enter Odile Bailloeuil's enchanted world of MagiCountry.

Collection:	MagiCountry by Odile Bailloeuil
Technique:	Fussy Cutting, English Paper Piecing, Appliqué, Quilting
Skill Level:	Intermediate
Finished Size:	20" (50.80cm) square

All possible care has been taken to assure the accuracy of this pattern. We are not responsible for printing errors or the manner in which individual work varies. Please read the instructions carefully before starting this project. If kitting, it is recommended a sample is made to confirm accuracy.



Project designed by Odile Bailloeu | Tech edited by Alison M. Schmidt

Fabric Requirements

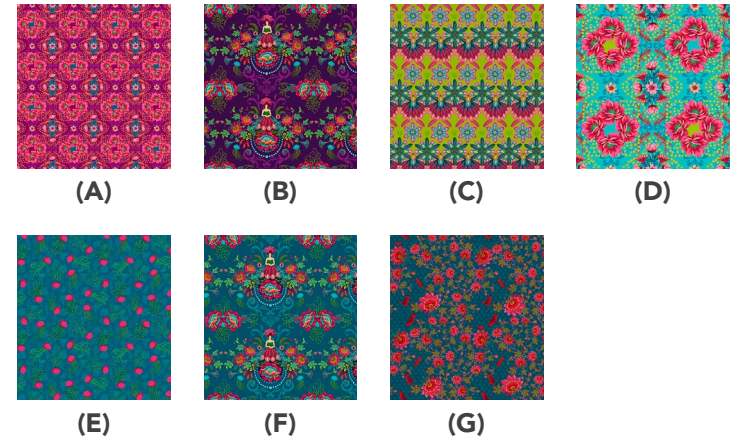
DESIGN	COLOR	ITEM ID	YARDAGE
(A) Mini Gecko	Plum	PWOB053.PLUM*	Fat Eighth
(B) Flower Fairies	Plum	PWOB046.PLUM*	1 ⁵ / ₈ yards (1.49m)
(C) Mini Plumettes	Green	PWOB051.GREEN*	Fat Quarter
(D) Gecko	Turquoise	PWOB052.TURQUOISE*	³ / ₈ yard (0.34m)
(E) Mini Aquatic	Blue	PWOB058.BLUE	⁵ / ₈ yard (0.57m)
(F) Mini Flower Fairies	Blue	PWOB047.BLUE	¹ / ₂ yard (0.46m)
(G) Ibis	Blue	PWOB049.BLUE**	¹ / ₄ yard (0.23m)

* extra fabric allowed for fussy cutting

** binding

Additional Recommendations

- 100% cotton thread in colors to match
- **English paper piecing papers:** (16) 2" Honeycombs, (1) 4" Square
- Fabric glue stick
- Embroidery and/or milliners needles
- 25" (63.50cm) square batting
- 25" (63.50cm) square muslin
- 20" (50.80cm) Pillow form
- **Optional:** Acrylic Template with ³/₈" seam allowance for 2" honeycombs



Cutting:

WOF = Width of Fabric

To Cut Honeycombs and Square for English Paper Piecing

Center a Honeycomb or Square paper over the desired design on the right side of a single layer of fabric. Cut around the paper adding a $\frac{3}{8}$ " seam allowance, or your desired seam allowance for hand appliqué.

Optional Acrylic Template: Center the template over the desired design on the right side of a single layer of fabric and cut around it.

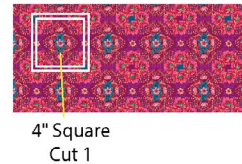
TIP: For repeat fussy cuts, trace a few critical elements on the top of the acrylic template using a fine point marker (first test that a mark can be removed with rubbing alcohol) and use the marks to place the template for each successive cut.

Cutting diagrams have been provided for fussy cutting fabric pieces for the pillow. These diagrams are only to be used as a guide. The fabric requirements specified are cut straight from the bolt and the beginning and ending points of the repeat will differ from the diagrams. There has been extra yardage allowed in the fabric requirements to ensure that all of the fussy cut pieces can be cut no matter where the print repeat begins.

Fabrics A, fussy cut:

(1) Square, centered over a small flower motif

Fabric A Cutting Diagram



Fabric B, fussy cut:

(8) Honeycombs, over vines with a portion of the red/teal motif at one tip

Fabric B Cutting Diagram



Fabric C, fussy cut:

(4) Honeycombs, over a pair of feather fans

Fabric C Cutting Diagram



Fabric D, fussy cut:

(4) Honeycombs, centered over a small flower motif

Fabric D Cutting Diagram



Fabric E, cut:

(1) 20 $\frac{1}{2}$ " square

Fabric F, cut:

(1) 16" x WOF; sub-cut
(2) 16" x 20 $\frac{1}{2}$ " rectangles

Fabric G, cut:

(3) 2 $\frac{1}{2}$ " x WOF for binding

Instructions

Some knowledge of English Paper Piecing and appliqué is assumed.

English Paper Piecing Prep

1. Center a 2" honeycomb paper on the wrong side of a **Fabric B** Honeycomb. Use a fabric glue stick to apply glue sparingly around the outside edge of the paper. Working around the paper, one side at a time, fold the $\frac{3}{8}$ " seam allowance of the **Fabric B** Honeycomb over the paper template and finger press to adhere to the glue.
2. Repeat Step 1 to prepare all the **Fabric B, C** and **D** Honeycombs and the **Fabric A** Square.

Pillow Top

Note: Follow the **Pillow Layout** diagram on page 5 for the placement of the Honeycomb print designs.

3. Arrange the Square and Honeycombs in a Medallion layout. Sew the pieces together along the adjoining edges using the flat back stitch or your favorite method. Tip: Sew the **Fabric B** Honeycombs together in pairs as they are arranged on each side of the **Fabric A** Square before adding them to square. Then work outwards from the center.

Flat Back Stitch: Position two honeycombs flat, wrong side up, aligning the edges to be sewn. Start stitching a short distance in from the corner and make three stitches back to the corner gliding the needle across the flat edge over the join of the seam to make invisible stitches. Reverse at the end and stitch across the joining edges.

4. Fold the **Fabric E** square in half, right sides together, matching the side edges and press to create a center crease. Open and repeat matching the top and bottom edges.
5. Carefully remove the papers from the Medallion and press the seam allowances back into place.
6. Center the Medallion, right side up, on top of the right side of the **Fabric E** square using the center creases as a guide. Pin or baste in place. Appliqué the outside edge of the Medallion to the **Fabric E** square using your favorite method to complete the Pillow Top (20 $\frac{1}{2}$ " square).

Finishing

7. Layer muslin, batting, and pillow top (right side up). Baste the layers together and quilt as desired. Trim excess batting and muslin even with the top after quilting is completed.
8. To make the upper portion of the envelope pillow backing, hem the lower 20 $\frac{1}{2}$ " edge of one **Fabric F** rectangle by folding $\frac{1}{4}$ " under twice and stitching along the inner fold. Repeat to hem the upper 20 $\frac{1}{2}$ " edge of the remaining **Fabric F** rectangle for the bottom portion of the backing.

9. Lay the Pillow Top right side up. Place the upper pillow backing wrong side up, on top of the Pillow Top, aligning the raw edges on the top and both sides. The hemmed edge will be in the middle. Repeat to place the bottom pillow backing on top, aligning the bottom edges and both sides, and overlapping the first rectangle in the middle. Pin and machine baste $\frac{1}{8}$ " from the outside edges through all layers.
10. Sew together the 2 $\frac{1}{2}$ " **Fabric G** binding strips end-to-end using diagonal seams. Press seams open. Press the binding strip in half wrong sides together.
11. Leaving an 8" tail of binding, sew the binding to the top of the pillow through all layers matching all raw edges. Miter corners. Stop approximately 12" from where you started. Lay both loose ends of binding flat along the edge. Where the loose ends meet, fold them back on themselves and press to form a crease. Using this crease as your stitching line, sew the two open ends of the binding right sides together. Trim seam to $\frac{1}{4}$ " and press open. Finish sewing binding to the pillow.
12. Turn the binding to the back of the pillow and hand-stitch in place.
13. Insert pillow form through the back opening to complete the pillow.

Pillow Layout

