



*Free Spirit*

## Magic Carpet Quilt

Featuring *MagiCountry* by Odile Bailloeuil

Fly away on this magic carpet to a world where women transform into gardens and plants become minerals.

<b>Collection:</b>	MagiCountry by Odile Bailloeuil
<b>Technique:</b>	Machine Appliqué, Piecing, Quilting
<b>Skill Level:</b>	Advanced Beginner
<b>Finished Size:</b>	38" x 50" (96.52cm x 127.00cm)

*All possible care has been taken to assure the accuracy of this pattern. We are not responsible for printing errors or the manner in which individual work varies. Please read the instructions carefully before starting this project. If kitting, it is recommended a sample is made to confirm accuracy.*



Project designed by Odile Bailloeu | Tech edited by Alison M. Schmidt

## Fabric Requirements

DESIGN	COLOR	ITEM ID	YARDAGE
<b>(A) Flower Fairies</b>	Plum	PWOB046.PLUM*	1 <sup>5</sup> / <sub>8</sub> yards (1.49m)
<b>(B) Plumettes</b>	Rouge	PWOB050.ROUGE*	1 <sup>7</sup> / <sub>8</sub> yards (1.71m)
<b>(C) Mini Gecko</b>	Plum	PWOB053.PLUM*	<sup>3</sup> / <sub>4</sub> yard (0.69m)
<b>(D) Aquatic</b>	Pink	PWOB057.PINK	<sup>5</sup> / <sub>8</sub> yard (0.57m)
<b>(E) Florapolis</b>	Pink	PWOB048.PINK	<sup>3</sup> / <sub>8</sub> yard (0.34m)
<b>(F) Bells</b>	Turquoise	PWOB059.TURQUOISE	<sup>1</sup> / <sub>8</sub> yard (0.11m)
<b>(G) Fronds</b>	Green	PWOB056.GREEN	<sup>1</sup> / <sub>8</sub> yard (0.11m)
<b>(H) Mini Aquatic</b>	Blue	PWOB058.BLUE**	<sup>3</sup> / <sub>8</sub> yard (0.34m)

\*\* includes binding

\* extra fabric allowed for fussy cutting

## Backing (Purchased Separately)

**44" (7.43m) wide**

Mini Geodes	Plum	PWOB055.PLUM	2 <sup>3</sup> / <sub>4</sub> yards (2.51m)
-------------	------	--------------	---

## Additional Recommendations

- 100% cotton thread in colors to match
- 46" x 58" (117cm x 147cm) batting
- 12" x 18" sheet of template plastic
- Invisible nylon thread for machine appliqué



(A)

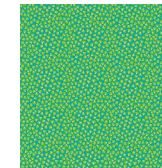
(B)

(C)

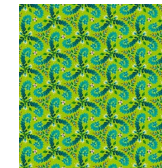
(D)



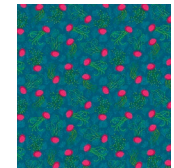
(E)



(F)



(G)



(H)



**Backing  
44"**

## Cutting

**WOF = Width of Fabric**

**Triangle Template :** Print Triangle template pattern at 100%/actual size. Measure the 1" squares to ensure the printout is the correct size, then tape pieces together as directed. Trace the template pattern onto template plastic and cut out on the outside line. A  $\frac{1}{4}$ " seam allowance is included.

**Fussy Cutting Pieces:** Cutting diagrams have been provided for fussy cutting fabric pieces for the quilt. These diagrams are only to be used as a guide. The fabric requirements specified are cut straight from the bolt and the beginning and ending points of the repeat will differ from the diagrams. There has been extra yardage allowed in the fabric requirements to ensure that all of the fussy cut pieces can be cut no matter where the print repeat begins.

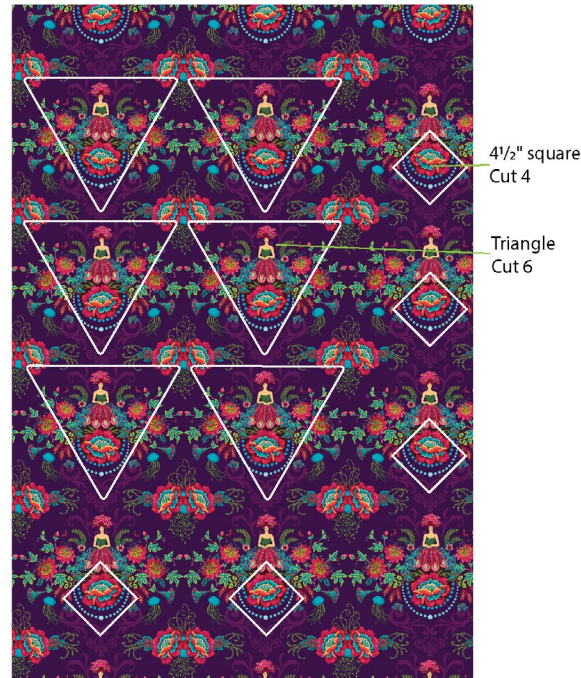
To fussy cut fabric pieces, place the Triangle template or any rulers you may be using right side up, on the right side of a single layer of fabric, over the print motif indicated in the cutting instructions. Trace around the template and then cut out on the inside edge of the drawn line.

**Tips:** If the fabric moves while tracing, place a piece of fine grit sand paper underneath the fabric to hold secure. Use a fine dry erase marker to draw guide lines of the fussy cut motif on top of the template to help reposition it.

### Fabric A, fussy cut:

- (6) Triangles, centered over the Flower Fairy
- (4)  $4\frac{1}{2}$ " squares, on point over the Flower at the base of the Fairy

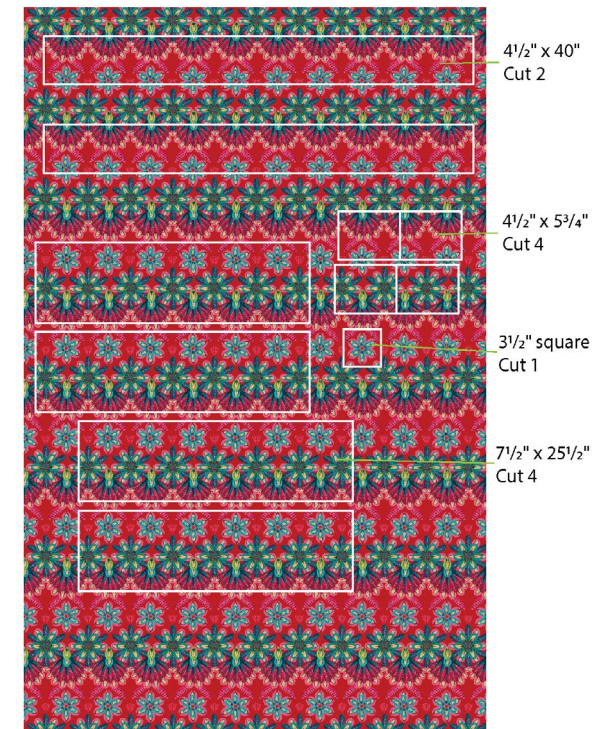
**Fabric A Cutting Diagram**



### Fabric B, fussy cut:

- (4)  $7\frac{1}{2}$ " x  $25\frac{1}{2}$ " strips, centered over the 2 rows of motifs
- (2)  $4\frac{1}{2}$ " x 40" strips, with the feather fans on one edge
- (4)  $4\frac{1}{2}$ " x  $5\frac{3}{4}$ " rectangles (these do not need to be fussy cut, as they will be hidden under the corner triangles)
- (1)  $3\frac{1}{2}$ " square, centered over a small feather star

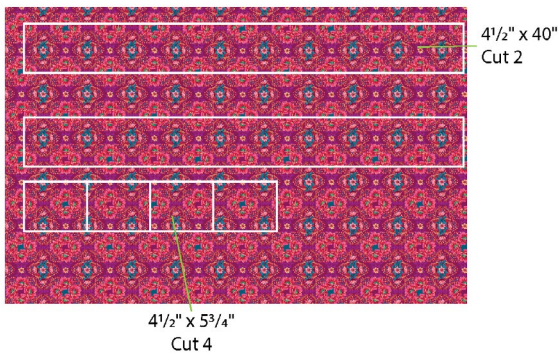
**Fabric B Cutting Diagram**



## Fabric C, fussy cut:

- (2) 4½" x 40" strips, centered over the small flower motif
- (4) 4½" x 5¾" rectangles (these do not need to be fussy cut, as they will be hidden under the corner triangles)

### Fabric C Cutting Diagram



## Fabric D, cut:

- (4) 4½" x WOF; sub-cut
- (4) 4½" x 25½" strips

## Fabric E, cut:

- (1) 12½" x WOF; sub-cut
- (2) 12½" x 18⅝" rectangles

## Fabric F, cut:

- (3) 1" x WOF; sub-cut
- (6) 1" x 14½" strips,
- (2) 1" x 4½" rectangles and
- (2) 1" x 3½" rectangles

## Fabric G, cut:

- (4) 1" x WOF; sub-cut
- (4) 1" x 24" strips

## Fabric H, cut:

- (5) 2½" x WOF for Binding

## Instructions

*All seam allowances are ¼" and pieces are sewn right sides together unless stated otherwise. Press seam allowances in the direction of the arrows.*

### Pieced Background

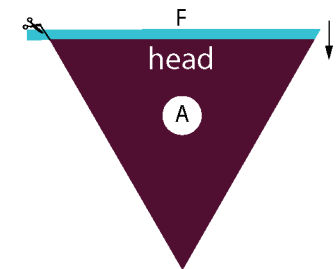
*Note: Follow the **Background Strip Layout** diagram on page 7 while assembling the background of the quilt.*

1. Sew (1) 4½" x 40" **Fabric B** strip between (2) 4½" x 5¾" **Fabric B** rectangles to make (1) Strip 1 (4½" x 50½"). Repeat to make (2) Strip 1.
2. Sew (1) 4½" x 40" **Fabric C** strip between (2) 4½" x 5¾" **Fabric C** rectangles to make (1) Strip 2 (4½" x 50½"). Repeat to make (2) Strip 2.
3. Sew together (2) 4½" x 25½" **Fabric D** strips end-to-end to make (1) Strip 3 (4½" x 50½"). Repeat to make (2) Strip 3.
4. Sew together (2) 7½" x 25½" **Fabric B** strips end-to-to make Strip 4 (7½" x 50½"). Repeat to make (2) Strip 4.
5. Sew the Strips together in the following order: 1, 2, 3, 4, 4, 3, 2, 1, to complete the Pieced Background (38½" x 50½").

### Piecing Appliqué Units

6. Fold the (6) 1" x 14½" **Fabric F** strips in half lengthwise, wrong sides together, aligning the long edges, and press.
7. Center a folded **Fabric F** strip on the top edge (closest to the head of the fairy) of a **Fabric A** Triangle, aligning the raw edges, and pin in place. The **Fabric F** strip will be longer than the Triangle edge. Sew along the pinned edge through all 3 layers. Press the strip away from the triangle, and press the seam allowances towards the Triangle. Trim the **Fabric F** strip even with the edges of the Triangle. (**Fig. 1**) Repeat to sew **Fabric F** strips to the top edge of all (6) Triangles. The folded edge will become the finished edge of the center hexagon.

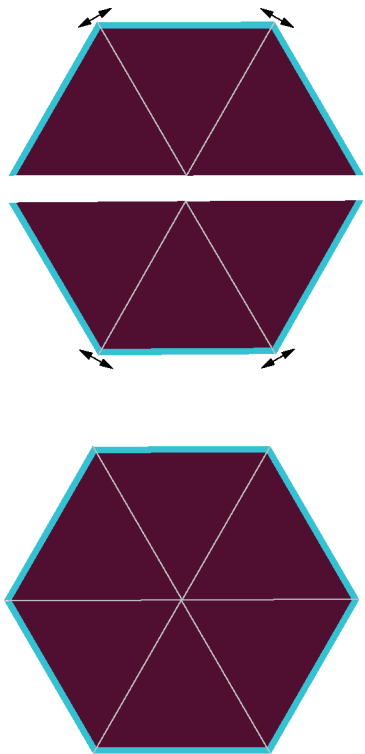
**Fig. 1**





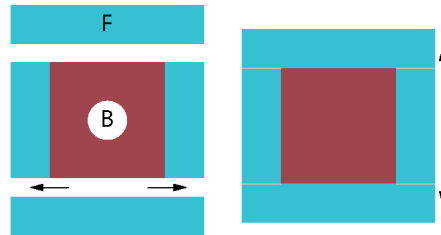
8. Sew (3) Triangles together, aligning the **Fabric F** seams, so **Fabric F** strips meet all around the outside edge. (**Fig. 2**) Press the seam allowances open. Repeat to make a second Half Hexagon. Sew the Half Hexagons together to complete the Center Hexagon.

Fig. 2



9. Sew the 1" x 3½" **Fabric F** rectangles to the side edges of the 3½" **Fabric B** square. (**Fig. 3**) Sew the 1" x 4½" **Fabric F** rectangles to the top and bottom to complete the Center Square.

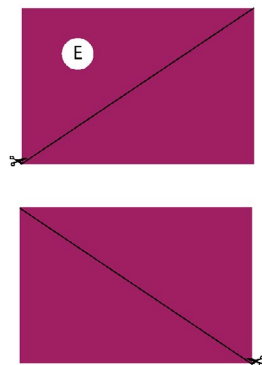
Fig. 3



10. Cut (1) **Fabric E** rectangle on the diagonal from the lower left corner to the upper right corner, making sure the directional print is oriented correctly. (**Fig. 4**) Cut the remaining rectangle on the opposite diagonal from the upper left corner to the lower right corner.

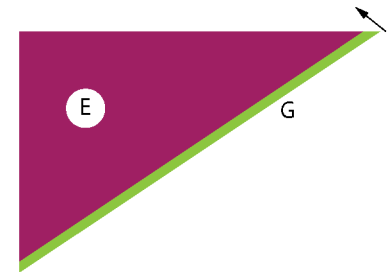
Fig. 4

Top of directional print



11. Fold the (4) **Fabric G** strips in half lengthwise, wrong sides together, aligning the long edges, and press.
12. Center a folded **Fabric G** strip on the long edge of a **Fabric E** Triangle, aligning the raw edges, and pin in place. The **Fabric G** strip will be longer than the Triangle edge. Sew along the pinned edge through all 3 layers. Press the strip away from the triangle, and press the seam allowances towards the triangle. Trim the **Fabric G** strip even with the edges of the triangle. (**Fig. 5**) Repeat to sew **Fabric G** strips to the long edge of the (4) **Fabric E** Triangles.

Fig. 5



## Quilt Top

**Note:** Follow the **Quilt Layout** diagram on page 7 for the placement of the appliqué units.

## Appliqué

**The corner and center pieces will be appliquéd to the Pieced Background following your preferred method:**

**For machine appliqué:** Place the appliqué piece, right side up, as indicated in the instructions and pin in place. Edgestitch by machine as directed, using invisible thread, around the appliqué piece.

**For hand appliqué:** Place the pieces as above, but use your preferred hand sewing thread and hand stitch in place.

13. Fold the Pieced Background in half horizontally, matching the top and bottom edges and press to create a center crease. Fold the Center Hexagon in half vertically and press to create a center crease.
14. Press the  $\frac{1}{4}$ " seam allowances of the Center Square to the wrong side to finish the edges.

Using the center creases and seams as guidelines, appliqué the Center Square on the center of the Center Hexagon.

15. Using the center creases and seams as guidelines, appliqué the Center Hexagon on the center of the Pieced Background.
16. Place the **Fabric E** Triangles on the corners of the Pieced Background, aligning the raw edges, and making the sure directional print is oriented correctly on each corner. Appliqué the long edge and machine baste remaining sides  $\frac{1}{8}$ " from the raw edges.

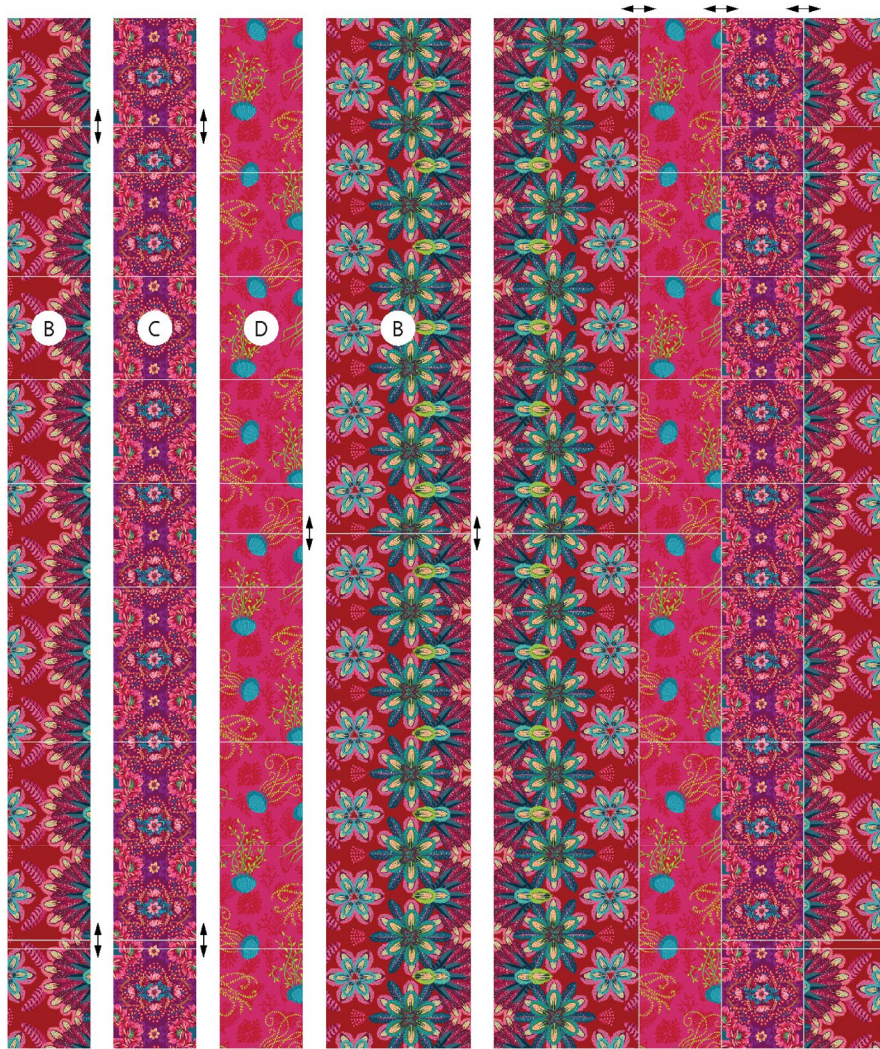
17. On all (4)  $4\frac{1}{2}$ " **Fabric A** squares, press under a  $\frac{1}{4}$ " seam allowance on the outer edges (adjacent to the pearl necklace motif) on 2 sides. Place the squares on the corners of the **Fabric E** triangles, aligning the raw edges. Appliqué the finished edges and machine baste the remaining sides to complete the Quilt Top ( $38\frac{1}{2}$ " x  $50\frac{1}{2}$ ").

## Finishing

18. Sew together the  $2\frac{1}{2}$ " **Fabric H** binding strips end-to-end using diagonal seams. Press seams open. Press the binding strip in half wrong sides together.
19. Layer backing (wrong side up), batting, and quilt top (right side up). Baste the layers together and quilt as desired. Trim excess batting and backing even with the top after quilting is completed.
20. Leaving an 8" tail of binding, sew the binding to the top of the quilt through all layers matching all raw edges. Miter corners. Stop approximately 12" from where you started. Lay both loose ends of binding flat along quilt edge. Where the loose ends meet, fold them back on themselves and press to form a crease. Using this crease as your stitching line, sew the two open ends of the binding right sides together. Trim seam to  $\frac{1}{4}$ " and press open. Finish sewing binding to quilt.
21. Turn the binding to the back of quilt and hand-stitch in place.



Background Strip Layout

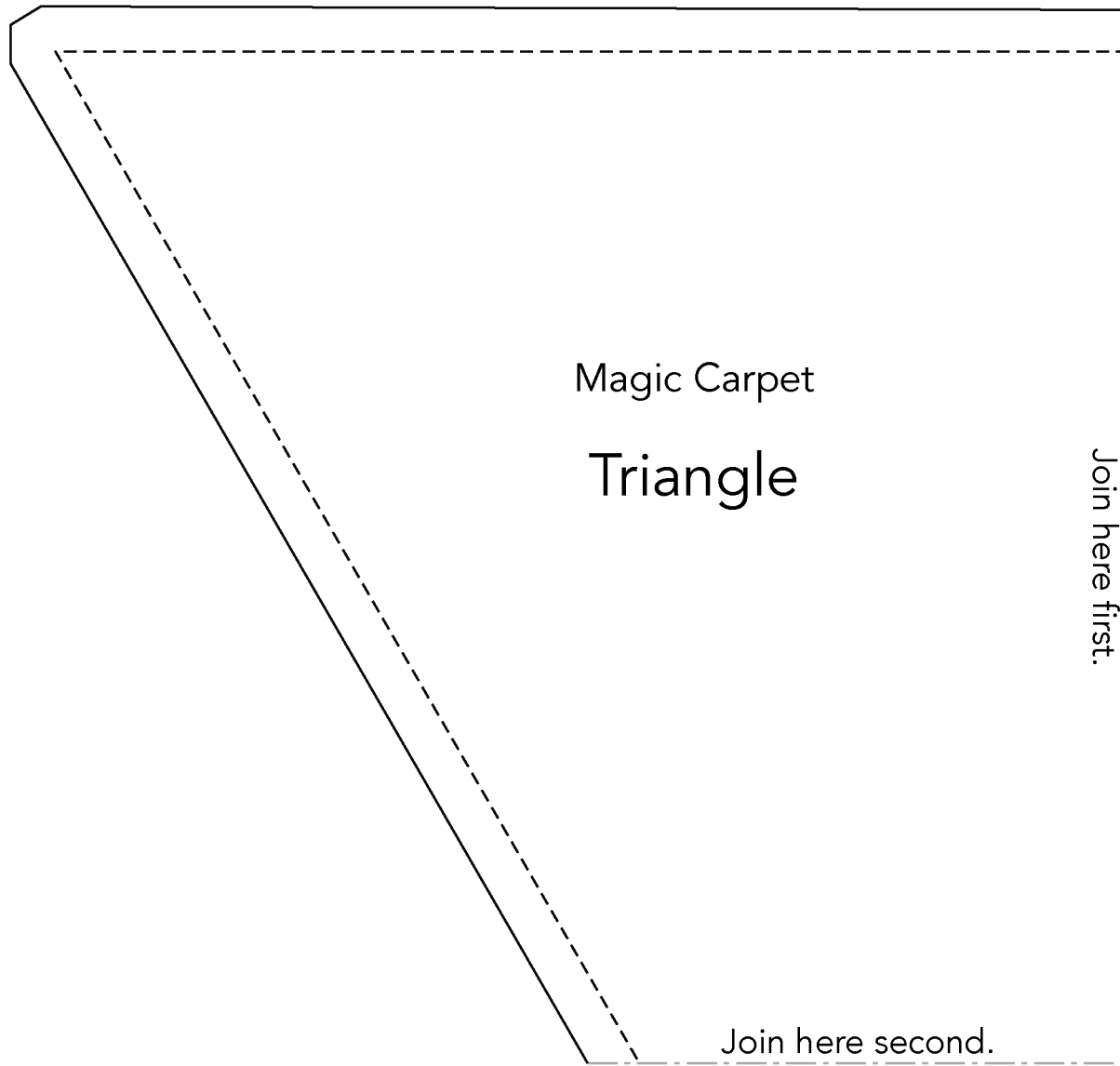


Strips: 1 2 3 4 4 3 2 1

Quilt Layout



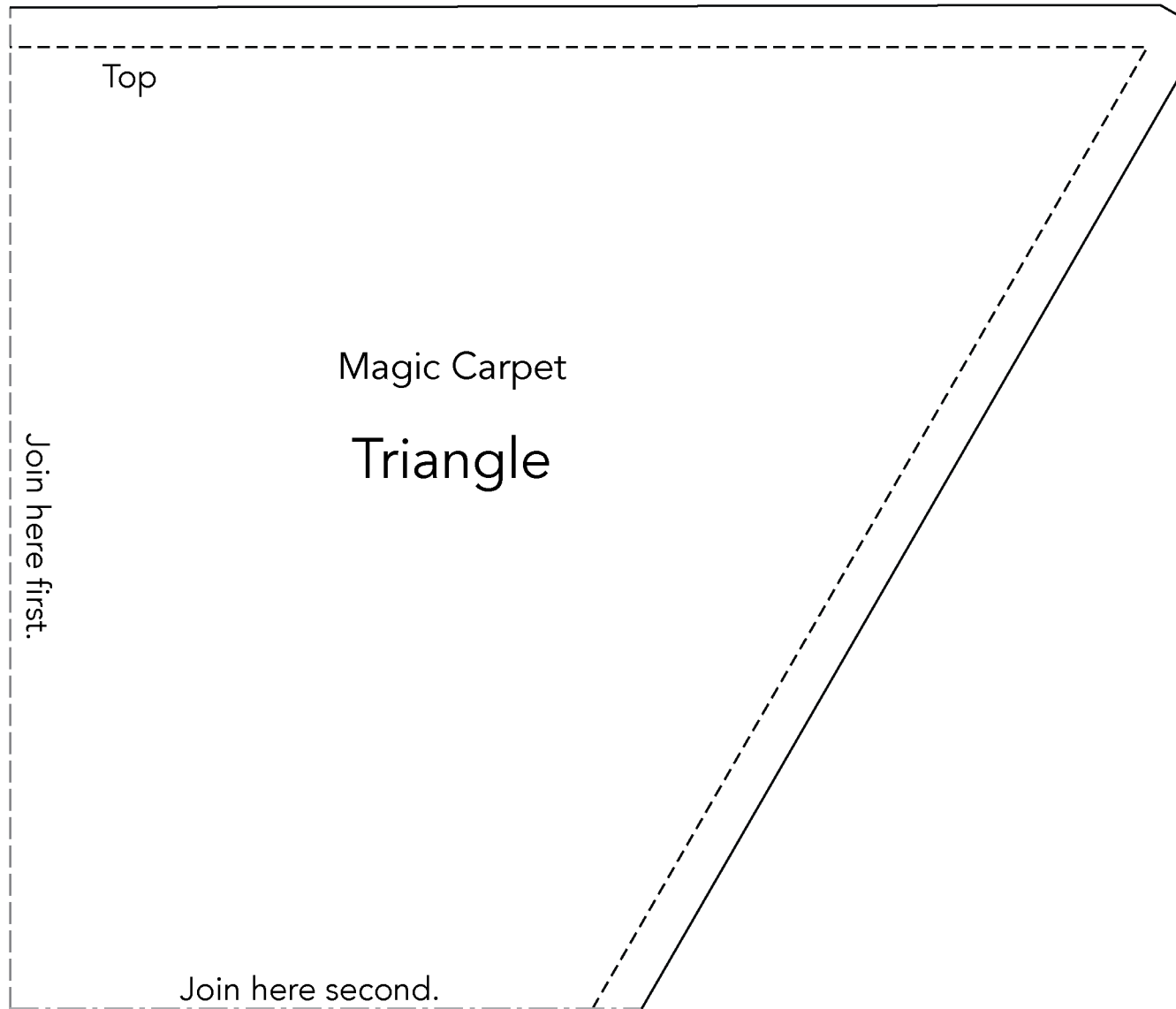




This square should measure 1" x 1" (2.54cm x 2.54cm) when printed.

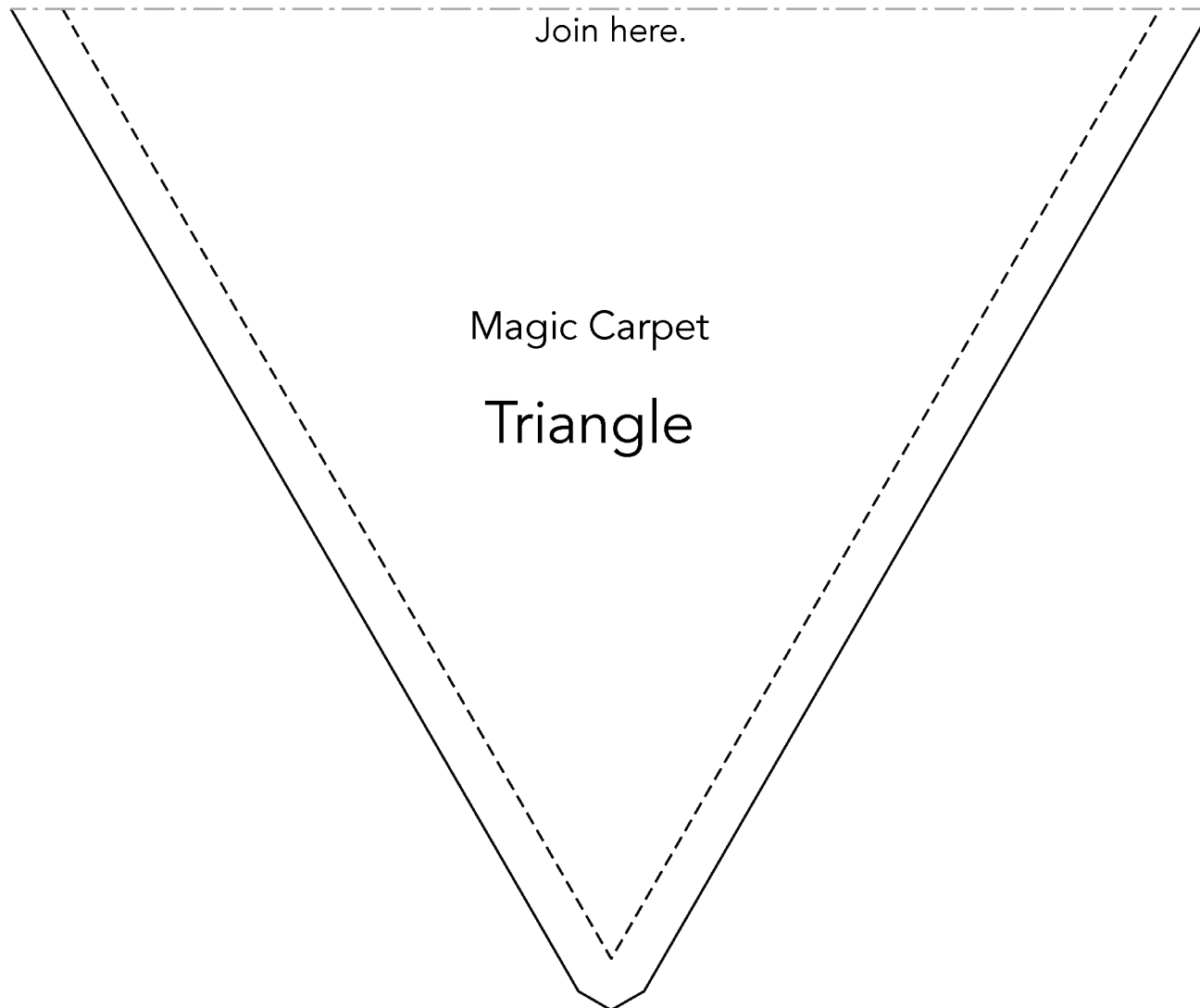
**\*\*\* Measure templates before cutting to confirm printing at 100%\*\*\***





This square should measure 1" x 1" (2.54cm x 2.54cm) when printed.

**\*\*\* Measure templates before cutting to confirm printing at 100%\*\*\***



This square should measure 1" x 1" (2.54cm x 2.54cm) when printed.

**\*\*\* Measure templates before cutting to confirm printing at 100%\*\*\***