

# NECCHI



Computerized Precision | Speed Control Slider | Drop-in Bobbin | Needle Up/Down

## NC-59QD

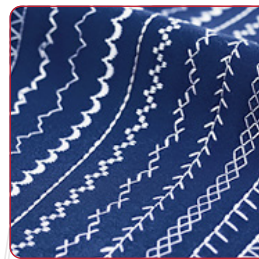
COMPUTERIZED SEWING MACHINE

### Control, Power, and Ease - All in One Machine.

The NECCHI NC-59QD combines the precision of a computerized machine with the simplicity of a mechanical-style interface. Designed with beginners in mind but powerful enough for experienced sewists, this customer-favorite machine delivers smooth stitching, intuitive controls, and reliable performance — even through multiple layers of fabric.

#### KEY HIGHLIGHTS

- Computerized Features with Simple Controls
- Speed Slider for Full Control on Detailed or Fast Sewing
- Tested & Trusted for Multi-Layer Sewing
- Automatic Needle Threader for Quick Setup
- A Perfect Upgrade Machine That's Still Beginner-Friendly



#### 59 Built-in Stitches

A wide variety of utility, decorative, and stretch stitches gives you creative flexibility for any project.



Parts & Electronics  
1-Year Warranty

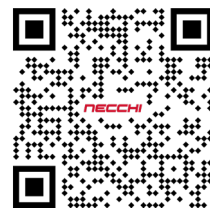


Online Video Library  
@NECCHIGLOBAL

**NECCHI**  
*enjoy your passion*

**MORE INFORMATION**  
[www.necchi.us](http://www.necchi.us)

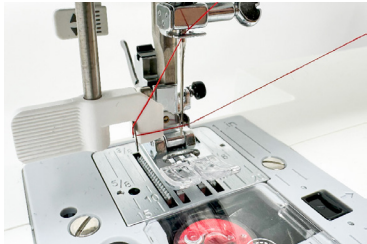
[f](#) [i](#) [t](#) [y](#) @necchi.us





### BUTTON CONTROLS & SPEED SLIDER

Start, stop, and adjust sewing speed easily for precision and comfort.



### AUTOMATIC NEEDLE THREADER

Thread the needle quickly to save time and reduce eye strain.



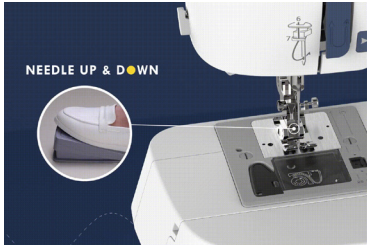
### ADJUSTABLE FOOT PRESSURE & TENSION

Sew smoothly across different fabrics from delicate to heavy layers.



### DROP-IN BOBBIN SYSTEM

Easy bobbin placement with clear visibility for hassle-free sewing.



### NEEDLE UP/DOWN FOOT PEDAL CONTROL

Control needle position for precise pivoting and corner sewing.

### Effortless Control

- Adjustable Stitch Length & Width *Fine-tune your stitches*
- Advanced Auto Threader *Quick, frustration-free setup*
- Bright LED Illumination *Clear visibility for detailed stitching*
- Simple Threading Path *Quick & easy threading*

### Reliable Performance

- Sewing Speed up to 800 spm
- Full Metal Frame
- Drop-In Bobbin
- Needle Position Foot Pedal Controls



<b>Weight</b>	14.2 lbs
<b>Dimensions</b>	16" L x 7.5" W x 12" H
<b>Stitch Width</b>	0.0 - 7.0 mm
<b>Stitch Length</b>	0.5 - 4.0 mm
<b>Throat Space</b>	7"
<b>Speed</b>	1000 spm
<b>Frame</b>	Metal
<b>Thread Cutter</b>	Side Manual Thread Cutter
<b>Foot Pressure</b>	Adjustable
<b>Bobbin System</b>	Drop-in
<b>Bobbin Size</b>	Class 15

### Machine Accessories

- |                    |                     |                |
|--------------------|---------------------|----------------|
| All purpose foot   | Edge/quilting guide | Spool pin      |
| Buttonhole foot    | 4 Bobbins           | Spool holders  |
| Zipper foot        | Package of needles  | Spool pin felt |
| Button sewing foot | L-screwdriver       | Soft cover     |
| Satin stitch foot  | Seam ripper/brush   |                |

