



Free Spirit

Suit Yourself Quilt

Featuring Curiouser and Curiouser by
Tula Pink

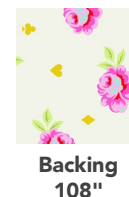
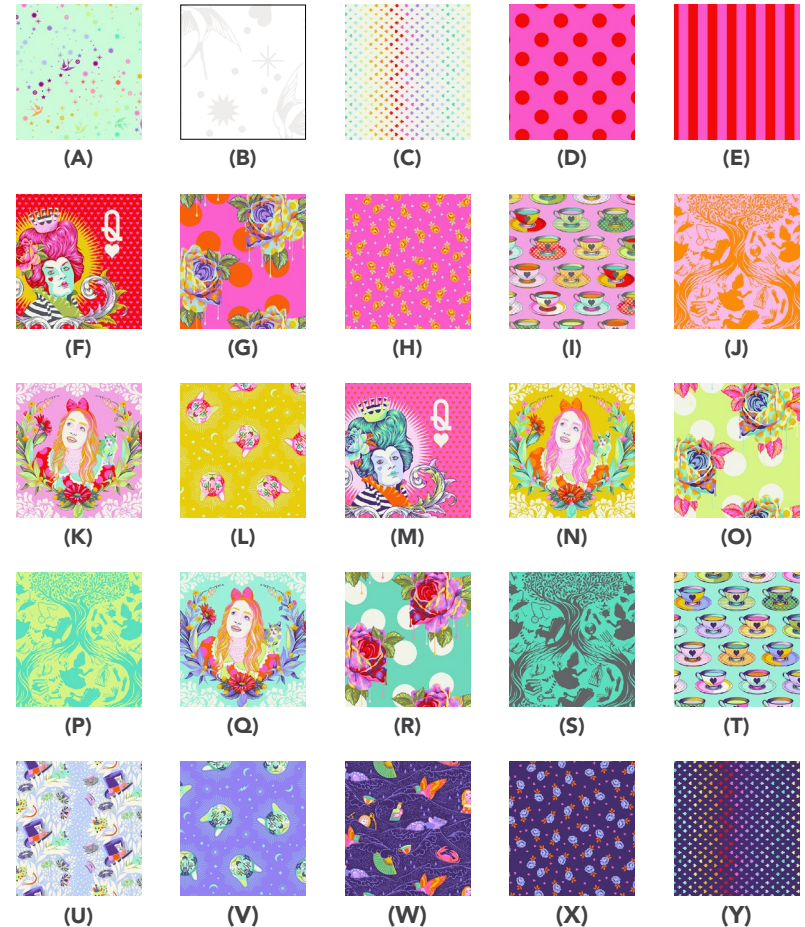
Collection:	Curiouser and Curiouser by Tula Pink
Technique:	Fussy Cutting, Fusible Machine Appliqué, Piecing, Quilting
Skill Level:	Confident Beginner
Finished Size:	Finished Size: 62" x 76" (157.48cm x 193.04cm) Finished Block Size: 12" x 12" (30.48cm x 30.48cm)

All possible care has been taken to assure the accuracy of this pattern. We are not responsible for printing errors or the manner in which individual work varies. Please read the instructions carefully before starting this project. If kitting, it is recommended a sample is made to confirm accuracy.

Project designed by Stacey Day | Tech edited by Alison M. Schmidt

Fabric Requirements

DESIGN	COLOR	ITEM ID	YARDAGE
(A) Fairy Dust	Mint	PWTP133.MINT	2¼ yards (2.06m)
(B) Fairy Flakes	Paper	PWTP157.PAPER	1¼ yards (1.14m)
(C) Suited and Booted	Wonder	PWTP168.WONDER	1⅓ yards (1.22m)
(D) Pom Pom	Peony	PWTP118.PEONY	⅝ yard (0.57m)
(E) Tent Stripe	Peony	PWTP069.PEONY*	½ yard (0.46m)
(F) The Red Queen	Wonder	PWTP160.WONDER	FQ (.45m x .53m)
(G) Painted Roses	Daydream	PWTP161.DAYDREAM	FQ (.45m x .53m)
(H) BabyBuds	Wonder	PWTP167.WONDER	FQ (.45m x .53m)
(I) Tea Time	Wonder	PWTP163.WONDER	FQ (.45m x .53m)
(J) Down the Rabbit Hole	Wonder	PWTP166.WONDER	FQ (.45m x .53m)
(K) Alice	Wonder	PWTP159.WONDER	FQ (.45m x .53m)
(L) Cheshire	Wonder	PWTP164.WONDER	⅝ yard (0.57m)
(M) The Red Queen	Daydream	PWTP160.DAYDREAM	FQ (.45m x .53m)
(N) Alice	Sugar	PWTP159.SUGAR	FQ (.45m x .53m)
(O) Painted Roses	Sugar	PWTP161.SUGAR	FQ (.45m x .53m)
(P) Down the Rabbit Hole	Bewilder	PWTP166.BEWILDER	FQ (.45m x .53m)
(Q) Alice	Daydream	PWTP159.DAYDREAM	FQ (.45m x .53m)
(R) Painted Roses	Wonder	PWTP161.WONDER	FQ (.45m x .53m)
(S) Down the Rabbit Hole	Daydream	PWTP166.DAYDREAM	FQ (.45m x .53m)
(T) Tea Time	Daydream	PWTP163.DAYDREAM	FQ (.45m x .53m)
(U) 6pm Somewhere	Daydream	PWTP165.DAYDREAM	FQ (.45m x .53m)
(V) Cheshire	Daydream	PWTP164.DAYDREAM	FQ (.45m x .53m)
(W) Sea of Tears	Daydream	PWTP162.DAYDREAM	FQ (.45m x .53m)
(X) Baby Buds	Daydream	PWTP167.DAYDREAM	FQ (.45m x .53m)
(Y) Suited and Booted	Daydream	PWTP168.DAYDREAM	FQ (.45m x .53m)



*includes binding

Backing (Purchased Separately)

44" wide OR
108" wide Big
Buds

4⅞ yards (4.46m)

Wonder QBTP006.WONDER 2⅞ yards (1.94m)

Additional Recommendations

- Tula Pink Aurifil Curiouser and Curiouser 50wt 100% cotton thread
- 70" x 84" (1.78m x 2.13m) batting

Optional:

- 3 yards paper-backed fusible web, such as Wonder Under by Pellon
- 1 copy of each appliqué pattern printed at actual size

Preparation

For all appliqué methods:

Make a full appliqué pattern from each half shape.

For fusible appliqué:

Trace each full appliqué shape (5) times onto the paper side of fusible web. Cut out roughly $\frac{1}{4}$ " outside the traced line. Follow the manufacturer's instructions to fuse to the wrong side of **Fabrics F - Y** as detailed in Cutting instructions,, centering appliqué shapes on motifs where desired. Cut out on the traced line.

For all other appliqué methods:

Trace the full appliqué shapes onto the corresponding fabrics listed below, centering appliqué shapes on motifs where desired, adding the seam allowance required for your preferred method of appliqué, and cut out.

Cutting

WOF = Width of Fabric; LOF = Length of Fabric. *WOF of a Fat Quarter or Fat Eighth is approximately 21".*

From Fabric A, cut:

- (7) $10\frac{1}{2}$ " x WOF; cut
- (20) $10\frac{1}{2}$ " x $10\frac{1}{2}$ " block backgrounds

From Fabric B, cut:

- (28) $1\frac{1}{2}$ " x WOF; cut
- (40) $1\frac{1}{2}$ " x $10\frac{1}{2}$ " and
- (40) $1\frac{1}{2}$ " x $12\frac{1}{2}$ " block sashing strips

From Fabric C, cut:

- (17) $2\frac{1}{2}$ " x WOF; cut
- (49) $2\frac{1}{2}$ " x $12\frac{1}{2}$ " sashing strips

From Fabric D, cut:

- (8) $2\frac{1}{2}$ " x WOF for border

From Fabric E, cut:

Enough $2\frac{1}{4}$ "-wide bias strips to make 300" of bias binding

From Fabric F, M, P, S, and V, cut from each:

- (1) Heart appliqué, centered on a motif if applicable

From Fabric G, J, Q, T, and W, cut from each:

- (1) Spade appliqué, centered on a motif if applicable

From Fabric H, K, N, U, and X, cut from each:

- (1) Diamond appliqué, centered on a motif if applicable

From Fabric I, O, R, and Y, cut from each:

- (1) Club appliqué, centered on a motif if applicable

From Fabric L, cut:

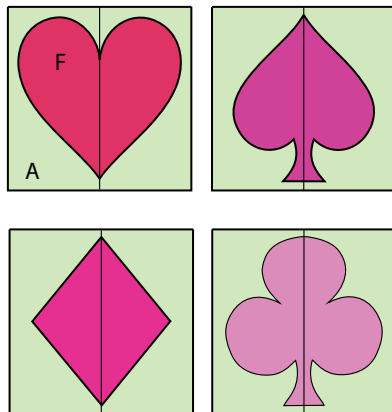
- (1) Club appliqué
- (30) $2\frac{1}{2}$ " x $2\frac{1}{2}$ " cornerstone squares, fussy cut centered on the Chesire cat motifs

Instructions

All seam allowances are $\frac{1}{4}$ ", pieces are sewn right sides together, and seam allowances are pressed open unless otherwise stated.

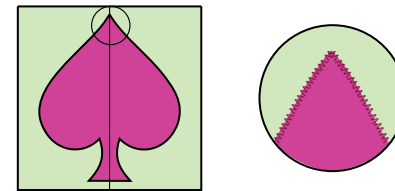
1. Fold the **Fabric A** $10\frac{1}{2}$ " x $10\frac{1}{2}$ " squares in half vertically and finger press the fold to mark the center of each square.
2. Fold the hearts, clubs, diamonds, and spades in half along the vertical axis and finger press the fold to mark the center of each shape.
3. If using paper-backed fusible web, peel the paper backing off each shape first. Pin, glue baste, or follow the manufacturer's instructions to fuse the shapes, right side up, to the right side of the **Fabric A** $10\frac{1}{2}$ " squares, matching the center folds. Center the Hearts 1" from the top and bottom of the squares. Center the Spades, Diamonds, and Clubs $\frac{1}{2}$ " from the top and bottom of the squares. (**Fig. 1**)

Fig. 1



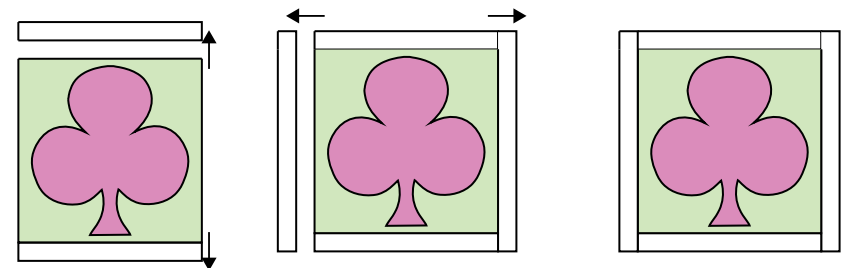
4. Using matching thread and a small zigzag stitch, or alternate decorative stitch of your choice, applique around each shape to secure it to the background square. Keep the needle down when pivoting at sharp corners. (**Fig. 2** shown top right)

Fig. 2



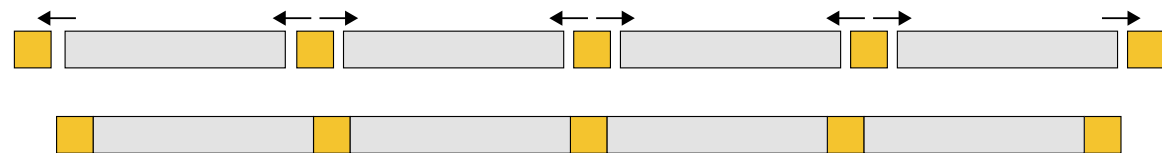
5. Sew a **Fabric B** $1\frac{1}{2}$ " x $10\frac{1}{2}$ " block sashing strip to the top and bottom of each block. Press towards **Fabric B**. Sew a **Fabric B** $1\frac{1}{2}$ " x $12\frac{1}{2}$ " block sashing strip to the sides of each block and press towards **Fabric B** again to complete the block. (**Fig. 3**)

Fig. 3



6. Sew (5) **Fabric L** $2\frac{1}{2}$ " cornerstones and (4) **Fabric C** $2\frac{1}{2}$ " x $12\frac{1}{2}$ " sashing strips together as shown into a sashing row. Press towards **Fabric C**. Repeat to make (6) total sashing rows. (**Fig. 4**)

Fig. 4



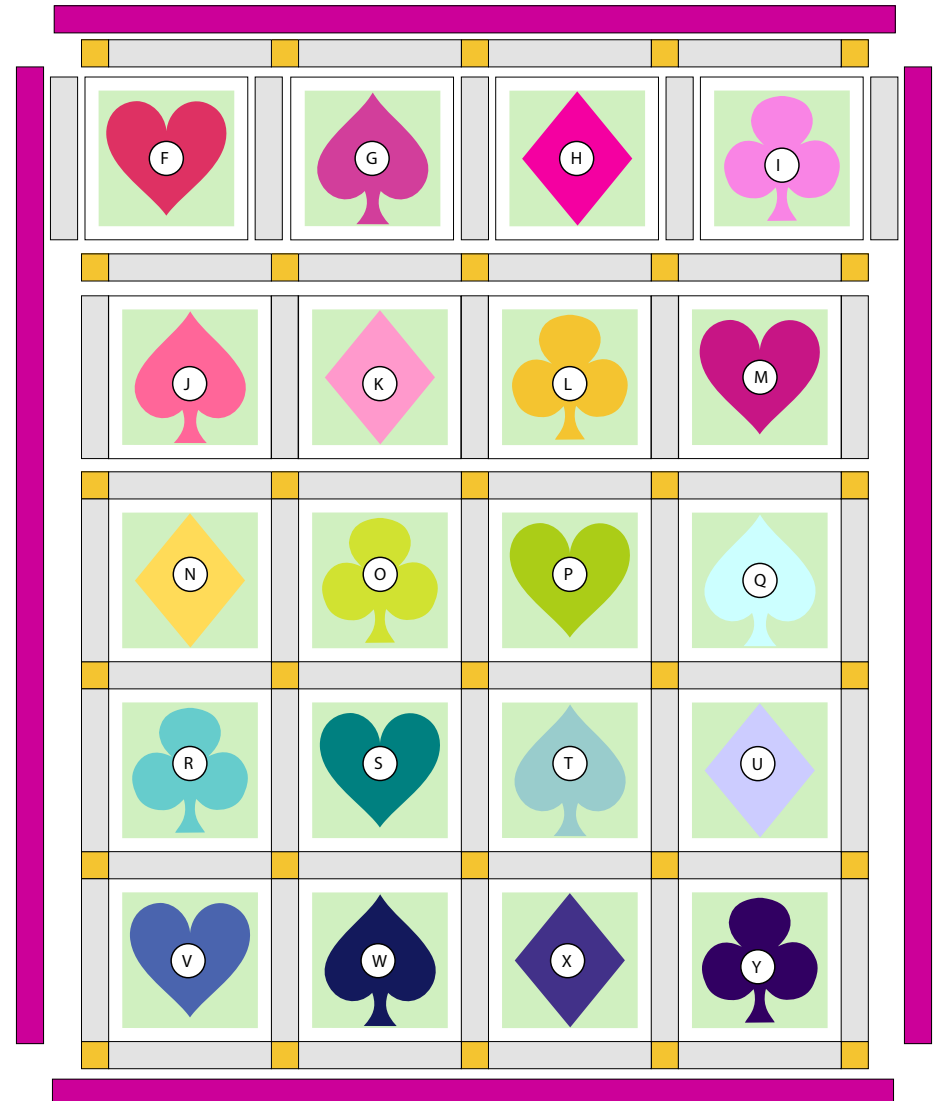
Make 6 sashing rows.

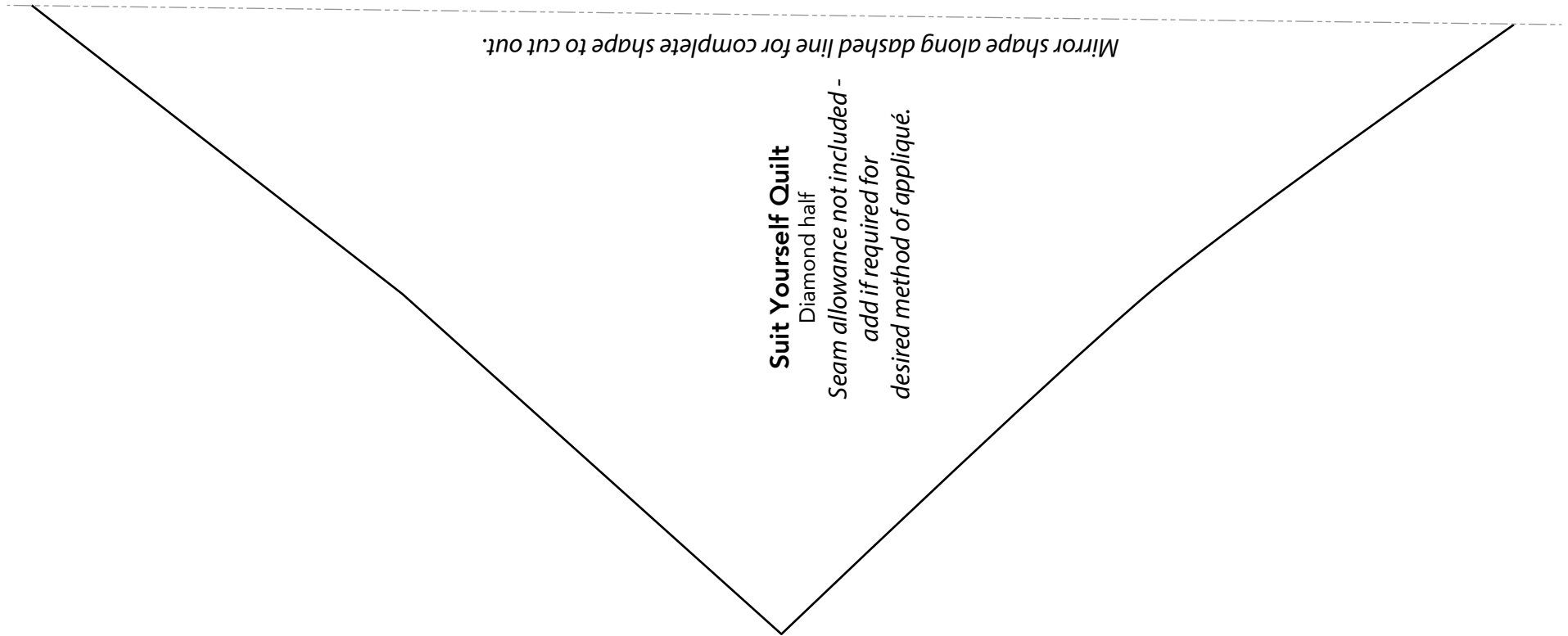
Quilt Top Assembly

Note: Follow the **Quilt Layout** diagram shown at right while assembling the quilt. Press seam allowances towards the Sashing Strips. Measure the Quilt Center width and height before adding borders. Adjust border measurements where necessary to match your measurements.

7. Sew the blocks together into (5) rows of (4) blocks with (5) **Fabric C** 2½" x 12½" sashing strips between each block and at the beginning and end of each row. Press towards **Fabric C**.
8. Sew the rows together with a sashing row between each. Press. Sew the remaining sashing rows to the top and bottom of the quilt.
9. Sew the **Fabric D** 2½" x WOF strips together end-to-end using diagonal seams into (1) continuous strip. Trim the seam allowances to ¼".
10. Measure the quilt top center vertically through the middle and cut (2) Side Borders to fit (72½" long) from the continuous **Fabric D** strip. Sew to the left and right sides of the quilt top center and press towards the border.
11. Repeat Step 10 to measure the quilt top horizontally through the center and cut and add (2) Top/Bottom Borders to fit (62½" long).
12. Layer the backing, batting, and quilt top; baste the layers together and quilt as desired. Trim the batting and backing even with the quilt top.
13. Sew the **Fabric E** binding strips end-to-end using diagonal. Press seams open. Press the binding strip in half wrong sides together.
14. Layer backing (wrong side up), batting, and quilt top (right side up). Baste the layers together and quilt as desired. Trim excess batting and backing even with the top after quilting is completed.
15. Leaving an 8" tail of binding, sew the binding to the top of the quilt through all layers matching all raw edges. Miter corners. Stop approximately 12" from where you started. Lay both loose ends of binding flat along quilt edge. Where the loose ends meet, fold them back on themselves and press to form a crease. Using this crease as your stitching line, sew the two open ends of the binding right sides together. Trim seam to ¼" and press open. Finish sewing binding to quilt.
16. Turn the binding to the back of quilt and hand-stitch in place.

Quilt Layout





Mirror shape along dashed line for complete shape to cut out.

Suit Yourself Quilt

Diamond half

Seam allowance not included -
add if required for
desired method of appliqué.

This square should
measure 1" x 1"
(2.54cm x 2.54cm)
when printed.

***** Measure templates before cutting to confirm printing at 100%*****

Mirror shape along dashed line for complete shape to cut out.

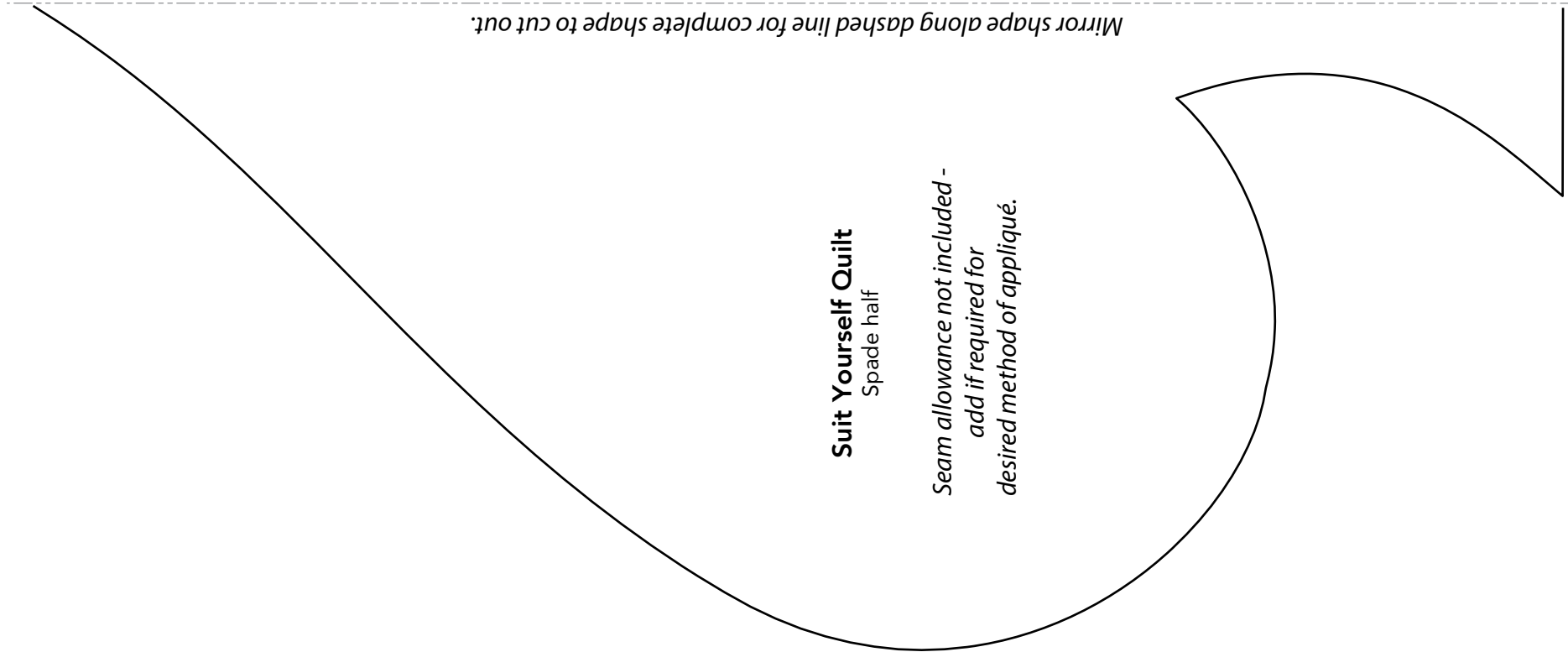
Suit Yourself Quilt

Club half

Seam allowance not included -
add if required for
desired method of appliqué.

This square should
measure 1" x 1"
(2.54cm x 2.54cm)
when printed.

***** Measure templates before cutting to confirm printing at 100%*****



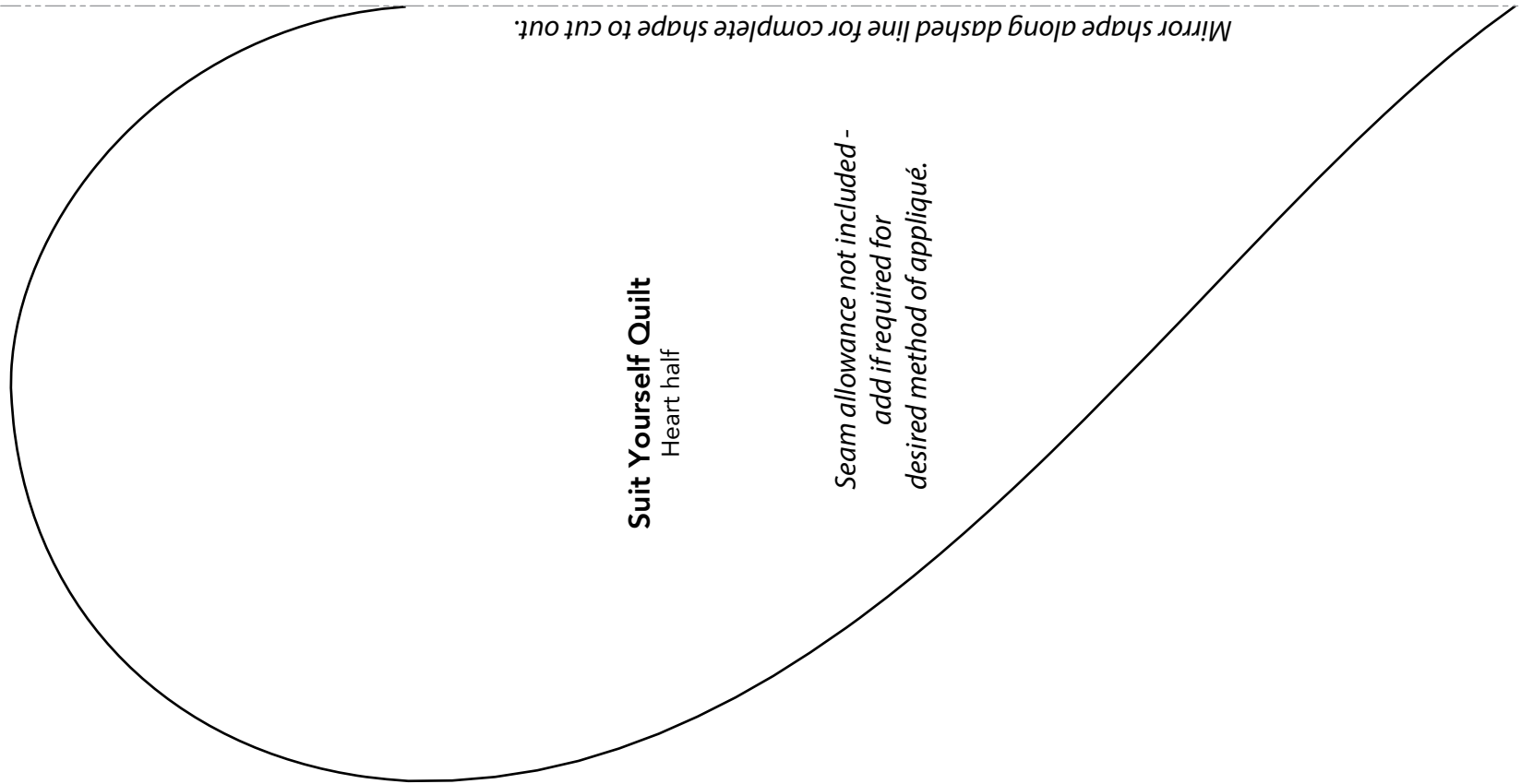
Mirror shape along dashed line for complete shape to cut out.

Suit Yourself Quilt
Spade half

*Seam allowance not included -
add if required for
desired method of appliqué.*

This square should
measure 1" x 1"
(2.54cm x 2.54cm)
when printed.

***** Measure templates before cutting to confirm printing at 100%*****



Mirror shape along dashed line for complete shape to cut out.

Suit Yourself Quilt
Heart half

Seam allowance not included -
add if required for
desired method of appliqué.

This square should
measure 1" x 1"
(2.54cm x 2.54cm)
when printed.

*** Measure templates before cutting to confirm printing at 100%***