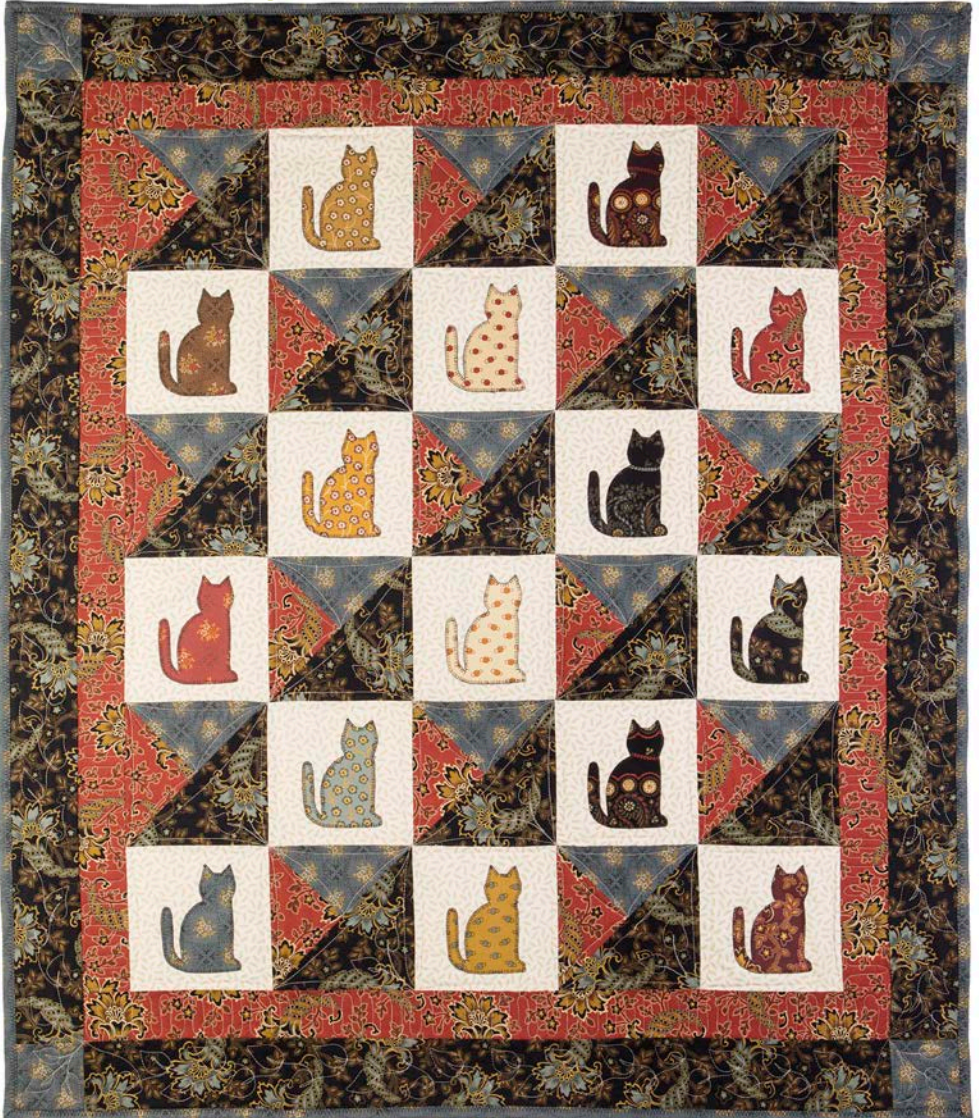


## GO! Qube 12" Laura's Kitty Quilt

Finished Size: 40" x 46"

*Fabrics are "Little House on the Prairie – Mansfield & Prairie Icons" and provided by Andover Fabrics*

*A charm pack of the Mansfield Collection, 3/4 yard of A-8227-L, 1 1/4 yards of A-8252-B, 1 yard of A-8250-B and 3/4 yard A-8250-R*



### Dies Needed:

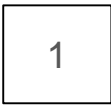


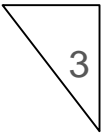

#### GO! Qube Mix & Match 12" Block (55778)

- GO! Square-6½" (6" Finished) (Shape 1)
- GO! Square-3½" (3" Finished) (Shape 2)
- GO! Half Square Triangle-6" Finished Square (Shape 3)
- GO! Quarter Square Triangle-6" Finished Square (Shape 4)

### Additional Dies Needed:

- GO! Calico Cat (55065)
- GO! Strip Cutter-2½" (2" Finished) (55017 or 55014)
- GO! Strip Cutter-3½" (3" Finished) (55032)

**Cutting Directions:**

Fabric Color	Shapes to Cut	Number of Shapes to Cut	Fabric Required
A-8227-L Off-White background		Cut 3—7" x width of fabric (WOF) strips. Fanfold into 7" widths. Sub cut into 15—6" finished squares.	3/4 yard
A-8252-B Blue Floral		Cut 1—7 <sup>3</sup> / <sub>4</sub> " x WOF strip. Fanfold into 7 <sup>3</sup> / <sub>4</sub> " widths. Sub cut into 15—6" finished quarter square triangles (QSTs).	1 1/4 yards
A-8252-B Blue Floral		Using leftover strip from above. Fanfold into 4" widths and sub cut 4—3" finished squares for outer border squares.	Yardage included above
A-8250-B Black Floral		Cut 2—7 <sup>3</sup> / <sub>8</sub> " x WOF strips. Fanfold into 7 <sup>3</sup> / <sub>8</sub> " widths and sub cut into 15—6" finished half square triangles (HSTs).	1 yard
A-8250-R Red Floral		Cut 1—7 <sup>3</sup> / <sub>4</sub> " x WOF strip. Fanfold into 7 <sup>3</sup> / <sub>4</sub> " widths. Sub cut into 15—6" QSTs.	3/4 yard
Charm pack	GO! Calico Cat (55065)	Apply fusible web backing to each of the 15 charm pack pieces prior to cutting. Place up to 4 layers on die with fabric right side up and cut 15—calico cats.	Charm pack

**Additional Fabrics Needed:**

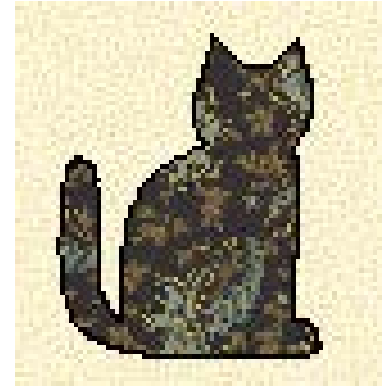
- Fusible Web
- Batting: 44" x 50"
- Backing: 46" x 52" or 2yds
- Borders:
  - Black Floral (A-8250-B) – Yardage included in above Cutting Chart
    - Cut 4—3<sup>1</sup>/<sub>2</sub>" strips using GO! Strip Cutter-3<sup>1</sup>/<sub>2</sub>" (3" Finished) (55032) for outer border
  - Red Floral (A-8250-R) – Yardage included in above Cutting Chart
    - Cut 4—2<sup>1</sup>/<sub>2</sub>" strips using GO! Strip Cutter-2<sup>1</sup>/<sub>2</sub>" (2" Finished) (55017 or 55014) for inner border
- Binding: Blue Floral (A-8252-B) – Yardage included above
  - Cut 6—2<sup>1</sup>/<sub>2</sub>" strips using GO! Strip Cutter-2<sup>1</sup>/<sub>2</sub>" (2" Finished) (55017 or 55014) for binding

## Sewing Directions:

*Press all seams open and use ¼" seams, unless otherwise indicated.*

### Cat Block

1. Remove the paper from the back of the cat appliqué shape. Center the Calico Cat onto the off-white 6" finished square (Shape 1) and press with a hot iron. Once you have made the first one, lay another off-white background square on top of the cat block and then looking thru the fabric or flipping the top layer to peek underneath, lay another cat on top of this one and press flat, then remove this block, but keep the first block on the ironing board and use as a "template" for the rest. Repeat with remaining 14 blocks.



2. Button hole stitch around each Calico Cat in either black or matching thread color. Keep the needle down when pivoting around curves and sharp corners.

### Alternate Triangle Block

1. Sew one red and one blue 6" finished quarter square triangle (QST) (Shape 4) together as shown. Make 15 QST units.
2. Sew one black 6" finished half square triangle (HST) (Shape 3) to long edge of QST unit. Make 15 blocks.



## Assemble the Quilt Top

1. Lay out blocks as shown.
2. Pin and sew blocks into rows alternating between Cat Blocks and Alternate Triangle Blocks. Press seams toward the Cat Blocks.
3. Pin and sew rows together, nesting all seams of Cat Blocks and Alternate Triangle Blocks.

## Add Borders to Assembled Quilt Top

### Inner Border

1. Cut fabric for inner borders using the GO! Strip Cutter-2½" (2" Finished) (55017 or 55014).
2. Measure vertically along both sides and vertically through the middle of the quilt top. Take all three measurements, average them and cut the 2½" strip the length of the average measurement.
3. Pin and stitch the vertical borders to the right and left sides of the quilt top, easing as necessary. Press seams toward the border.
4. Measure horizontally along the top and bottom and the middle of the quilt top. Take all three measurements, average them and cut the 2½" strip the length of the average measurement.
5. Pin and stitch the horizontal borders to the top and bottom of the quilt top, easing as necessary. Press seams toward the border.



## Outer Border

1. The outer border is cut using the GO! Strip Cutter-3½" (55032). Measure the width and height of the quilt with the inner borders added. Cut four or five strips from the width of fabric (WOF) and based on the measurement of the width and height of the quilt. If the width and height of the quilt are greater than the measurement of the WOF, piece the cut 3½" strips as needed.
2. Sew the blue 3" finished squares (Shape 2) to the top and bottom border strips.
3. Sew the side border strips to the sides of the quilt. Press seams toward the Inner Border.
5. Sew the top and bottom border strips to the top and bottom of the quilt. Press seams toward the Inner Border.

## Quilting and Finishing

1. Layer quilt top with batting and backing.
2. Pin or baste layers together.
3. Quilt as desired.
4. Attach binding, mitering the corners.

**\*Coloring page provided on next page**

