

## GO! Pincushion

Finished Size: 3" x 3" x 2"





## Dies Needed:

GO! Pincushion (55209)

## Fabric Requirements:

Fabric Color	Total Yardage
Blue Sewing Print	1/3 yard
Black	2-1/2" x 2-1/2" square per applique
Yellow	1/3 yard
Fusible	2-1/2" x 2-1/2" square per applique
Stuffing	Approx. 6 oz

## Stuffing Options:

- Walnut Shells
- Cotton Stuffing or batting
- Steel wool
- Rice
- Sand
- Plastic Beads

## Cutting Directions:

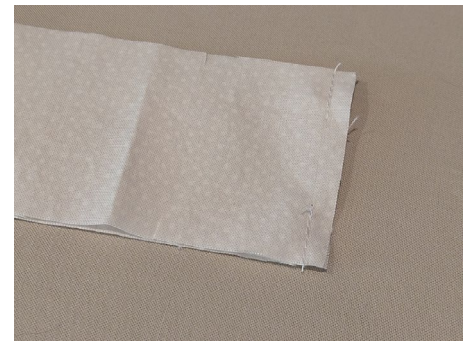
Fabric Color	Die	Number of Shapes to Cut
Blue Sewing Print	GO! Pincushion (55209)	Cut 2—4" squares. Place on selected blade and cut. Cut 2 squares.
Blue Sewing Print	GO! Pincushion (55209)	Cut 1—13" x 3" rectangles. Place on selected blade and cut. Cut 1 side/strip.
Yellow	GO! Pincushion (55209)	Cut 2—4" squares. Place on selected blade and cut. Cut 2 squares.
Yellow	GO! Pincushion (55209)	Cut 1—13" x 3" rectangles. Place on selected blade and cut. Cut 1 side/strip.
Black	GO! Pincushion (55209)	Cut and fuse 2-1/2" x 2-1/2" square. Place on selected blade and cut. Cut 1 Sewing Machine.
Black	GO! Pincushion (55209)	Cut and fuse 2-1/2" x 2-1/2" square. Place on selected blade and cut. Cut 1 Spool.

## Sewing Directions:

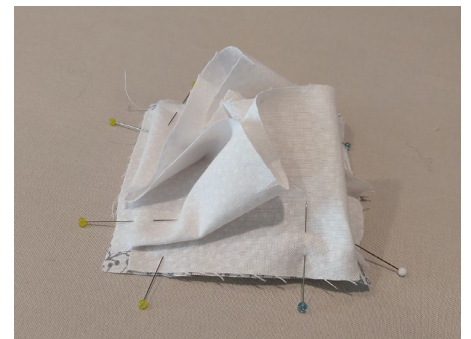
*Press all seams open and use 1/4" seams, unless otherwise indicated.*

*Note: the sewing machine and spool shapes on the die are designed for fusible applique. It will be easier to applique and embellish the top of the pincushion before you sew it together.*

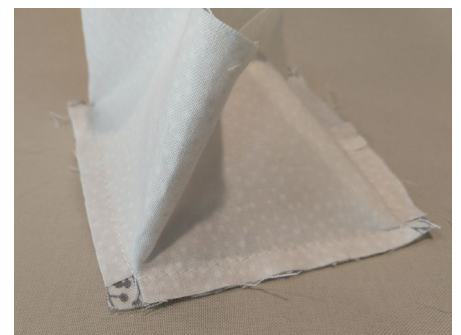
1. Fuse selected shape to the fabric square cut for the top of the pincushion following the manufacturer's directions.
2. Have fun embellishing the applique shapes!
3. Finish off the applique shapes with embroidery files.
4. Place short ends of rectangle right sides together. Sew 3/4" in from each side and back stitch, leaving a 1" opening.



5. Place one top or bottom square right side up and with side rectangle as a tube, line up with notches by the corners right sides together.



6. Carefully sew 1/4" all the way around making sure to catch a tiny bit of the side piece in the corners (it will be a tiny bit- maybe – 1-2 threads of the fabric that is catching).



*Note: the seam should be centered on one of the sides of the pincushion top/bottom so that the corners will line up correctly.*

7. Repeat with the remaining square.
8. Carefully turn right sides out through the 1" opening.
9. Stuffed with crushed walnut shells, rice or sand, and ladder stitch opening.

