



Free Spirit

## Standen Round Quilt

Featuring Standen by The Original Morris & Co

Easy pieced borders surround the focal print center.

<b>Collection:</b>	Standen by The Original Morris & Co
<b>Technique:</b>	Patchwork, Piecing, Quilting
<b>Skill Level:</b>	Beginner
<b>Finished Size:</b>	72" x 80" (183cm x 203cm)

*All possible care has been taken to assure the accuracy of this pattern. We are not responsible for printing errors or the manner in which individual work varies. Please read the instructions carefully before starting this project. If kitting it is recommended a sample is made to confirm accuracy.*

Project designed by Lucy A. Fazely  
Tech edited by Alison M. Schmidt

## Fabric Requirements

DESIGN	COLOR	ARTICLE CODE	YARDAGE
<b>(A) Bachelor's Button (Kelmscott)</b>	Aqua	PWWM003.AQUAX	¼ yard (0.2m)
<b>(B) Lodden</b>	Autumn	PWWM023.AUTUMN	⅝ yard (0.6m)
<b>(C) Brer Rabbit</b>	Navy	PWWM026.NAVY	½ yard (0.5m)
<b>(D) Brer Rabbit</b>	Teal	PWWM026.TEAL	1 ⅛ yards (1.0m)
<b>(E) Golden Lily</b>	Autumn	PWWM028.AUTUM	⅝ yard (0.6m)
<b>(F) Golden Lily</b>	Dusk	PWWM028.DUSK	⅝ yard (0.6m)
<b>(G) Poppy</b>	Cream	PWWM029.CREAM	¾ yard (0.7m)
<b>(H) Poppy</b>	Navy	PWWM029.NAVY*	1 ⅛ yards (1.0m)
<b>(I) Willow Bough</b>	Gold	PWWM030.GOLD	¼ yard (0.2m)
<b>(J) Forest</b>	Teal	PWWM031.TEAL	2 yards (1.8m)

\* includes binding

## Backing (Purchased Separately)

### 44" (111.76cm) wide

Forest Teal PWWM031.TEAL 5 yards (4.6m)

### OR

### 108" (274.32cm) wide

Acanthus Verdant QBWM002.VERDANT 2 ⅜ yards (2.2m)

## Additional Requirements

- Sewing machine
- 80" x 88" (203.20cm x 223.52cm) quilt batting
- 100% cotton thread in a color to match
- Rotary cutter, ruler, and mat
- Basic sewing and pressing supplies



(A)



(B)



(C)



(D)



(E)



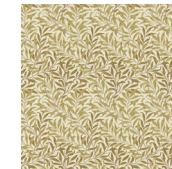
(F)



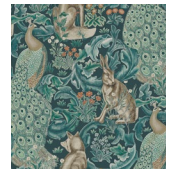
(G)



(H)



(I)



(J)



Backing  
44"  
(111.76cm)



Backing  
108"  
(274.32cm)

## Cutting

**WOF = Width of Fabric**  
**LOF = Length of Fabric**

*Beginning quilters may benefit from not sub-cutting WOF strips down to exact border sizes until previous round of the quilt top has been completed. Then measure the quilt top center and trim the border strips to fit.*

### Fabric A, cut:

(1) 4½" (11.43cm) x WOF; subcut  
 (8) 4½" (11.43cm) squares

### Fabric B, cut:

(1) 6½" (16.51cm) x WOF; subcut  
 (6) 6½" (16.51cm) squares  
 (3) 4½" (11.43cm) x WOF; subcut  
 (20) 4½" (11.43cm) squares

### Fabric C, cut:

(2) 6½" (16.51cm) x WOF; subcut  
 (8) 6½" (16.51cm) squares

### Fabric D, cut:

(8) 2½" (6.35cm) x WOF; sewn together end to end and cut into (2) 2½" x 76½" (6.35cm x 194.31cm) and (2) 2½" x 72½" (6.35cm x 184.15cm) borders  
 (3) 2¼" (5.72cm) x WOF; sewn together end to end and cut into (2) 2¼" x 60½" (5.72cm x 153.67cm) borders  
 (4) 2" (5.08cm) x WOF; sewn together end to end and cut into (2) 2" x 65" (5.08cm x 165.10cm) borders

### Fabric E, cut:

(1) 6½" (16.51cm) x WOF; subcut  
 (4) 6½" (16.51cm) squares  
 (2) 4½" (11.43cm) x WOF; subcut  
 (14) 4½" (11.43cm) squares

### Fabric F, cut:

(1) 6½" (16.51cm) x WOF; subcut  
 (4) 6½" (16.51cm) squares  
 (2) 4½" (11.43cm) x WOF; subcut  
 (14) 4½" (11.43cm) squares

### Fabric G, cut:

(4) 2½" (6.35cm) x WOF; sub-cut into (2) 2½" x 32½" (6.35cm x 82.55cm) and (2) 2½" x 30½" (6.35cm x 77.47cm) borders  
 (3) 2¼" (5.72cm) x WOF; sewn together end to end and cut into (2) 2¼" x 45½" (5.72cm x 115.57cm) borders  
 (3) 2" (5.08cm) x WOF; sewn together end to end and cut into (2) 2" x 48½" (5.08cm x 123.19cm) borders

### Fabric H, cut:

(1) 6½" (16.51cm) x WOF; subcut  
 (4) 6½" (16.51cm) squares  
 (1) 4½" (11.43cm) x WOF; subcut  
 (4) 4½" (11.43cm) squares  
 (9) 2½" (6.35cm) x WOF, for binding

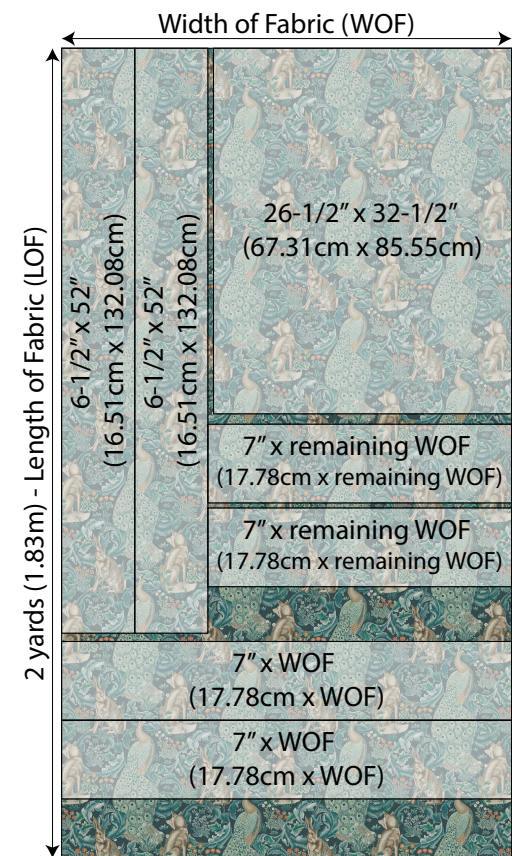
### Fabric I, cut:

(1) 4½" (11.43cm) x WOF; subcut  
 (8) 4½" (11.43cm) squares

### Fabric J, cut:

(1) 52" (1.32m) x WOF; subcut (2) 6½" x 52" (16.51cm x 132.08cm) strips, (1) 26½" wide x 32½" (67.31cm x 82.55cm) tall rectangle, and (2) 7" tall (17.78cm) x remaining WOF strips as shown in the **Cutting Diagram**  
 (2) 7" x WOF (17.78cm x WOF) strips

## Cutting Diagram



Fabric J Cutting Diagram

## Sewing

**Note:** Use a  $\frac{1}{4}$ " (.64cm) seam allowance throughout. Sew all pieces with right sides together and raw edges even using matching thread. Press after each seam.

## Quilt Top Assembly

1. Sew **Fabric G**  $2\frac{1}{2}$ " x  $32\frac{1}{2}$ " (6.35cm x 82.55cm) strips to the right and left sides of the **Fabric J**  $26\frac{1}{2}$ " x  $32\frac{1}{2}$ " (67.31cm x 82.55m) rectangle. Add **Fabric G**  $2\frac{1}{2}$ " x  $30\frac{1}{2}$ " (6.35cm x 77.47cm) borders to top and bottom.
2. Noting **Quilt Layout**, arrange **Fabrics B, C, E, and F**  $6\frac{1}{2}$ " (16.51cm) squares in columns on the right and left sides of quilt. Stitch into borders,  $6\frac{1}{2}$ " x  $36\frac{1}{2}$ " (16.51cm x 92.71cm) unfinished. Sew to the right and left sides of quilt. Arrange **Fabrics B, C, E, F, and H**  $6\frac{1}{2}$ " (16.51cm) squares in horizontal rows above and below quilt. Stitch into borders,  $6\frac{1}{2}$ " x  $42\frac{1}{2}$ " (16.51cm x 1.08m) unfinished. Sew to top and bottom of quilt.
3. Sew **Fabric G** 2" x  $48\frac{1}{2}$ " (5.08cm x 1.23m) border strips to the right and left sides of quilt. Add **Fabric G**  $2\frac{1}{4}$ " x  $45\frac{1}{2}$ " (5.72cm x 146.05cm) borders to top and bottom.
4. Sew **Fabric J**  $6\frac{1}{2}$ " x 52" (16.51cm x 1.32m) border strips to the right and left sides of quilt. Sew (1) 7" (17.78cm) x full WOF **Fabric J** strip end to end with shorter (1) 7" (17.78cm) x remaining WOF **Fabric J** strip, matching design as much as possible. Trim to 7" x  $57\frac{1}{2}$ " (17.78cm x 146.05cm). Repeat to make a second border. Sew borders to top and bottom of quilt.
5. Sew **Fabric D** 2" x 65" (5.08cm x 165.10cm) border strips to the right and left sides quilt. Add **Fabric D**  $2\frac{1}{4}$ " x  $60\frac{1}{2}$ " (5.72cm x 153.67cm) borders to top and bottom.
6. Noting **Quilt Layout** on page 4, arrange **Fabrics A, B, E, F, and I**  $4\frac{1}{2}$ " (11.43cm) squares in columns on the right and left sides of quilt. Stitch into borders,  $4\frac{1}{2}$ " x  $68\frac{1}{2}$ " (11.43cm x 174cm) unfinished. Sew to right and left sides of quilt. Arrange **Fabrics A, B, E, F, H, and I**  $4\frac{1}{2}$ " (11.43cm) squares in horizontal rows above and below quilt. Stitch into borders,  $4\frac{1}{2}$ " x  $68\frac{1}{2}$ " (16.51cm x 174cm) unfinished. Sew to top and bottom of quilt.
7. Sew **Fabric D**  $2\frac{1}{2}$ " x  $76\frac{1}{2}$ " (6.35cm x 194.31cm) border strips to the right and left sides of quilt. Add **Fabric D**  $2\frac{1}{2}$ " x  $72\frac{1}{2}$ " (6.35cm x 184.15cm) borders to top and bottom.

## Finishing

8. Cut and piece the backing to measure 80" x 88" (203.20cm x 223.52cm) to match the quilt batting. Layer the backing right side down, batting, and quilt top right side up. Quilt or tie as desired.
9. Prepare binding from (9)  $2\frac{1}{2}$ " x WOF (6.35cm x WOF) **Fabric H** strips. Sew strips together into one long binding strip. Press strip in half lengthwise with wrong sides together.
10. Carefully trim backing and batting even with quilt top.
11. Leaving an 8" (20.32cm) tail of binding, sew binding to top of quilt through all layers matching all raw edges. Miter corners. Stop approximately 12" (30.48cm) from where you started. Lay both loose ends of binding flat along quilt edge. Where these two loose ends meet, fold them back on themselves and press to form a crease. Using this crease as your stitching line, sew the two open ends of the binding together right sides together. Trim seam to  $\frac{1}{4}$ " (.64cm) and press open. Finish sewing binding to quilt.
12. Turn binding to back of quilt and blind stitch in place.

## Quilt Layout

