

Let's see if we can help with



# What to Expect

For the Hearing on JUNE 2, 2021

State Capitol, GAR room (416 N)

10:00am



Arrival:

Suggested: 9:30am

*Disclaimer: Please know you are welcome to come when you can – walk in at any point of the day. Come and go as you please – The GAR room is fairly large and there is a chance if you arrive early – you may be able to sit in the hearing room. We suggest if you are bringing children that you utilize the overflow room (we will help you locate it the day of the hearing).*

As you arrive in Madison, your first task will be parking. The amount of options is overwhelming – and there are a lot of one-way streets (getting stuck in the Capitol loop is no laughing matter). Plan a little extra time if this is your first trip.



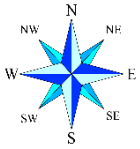
Parking:

State Street Capitol Garage located at 214 N. Carroll St Madison, WI 53703

Information: <https://www.cityofmadison.com/parking-utility/garages-lots/state-street-capitol-garage>

Directions: <https://tinyurl.com/yymmdskr>

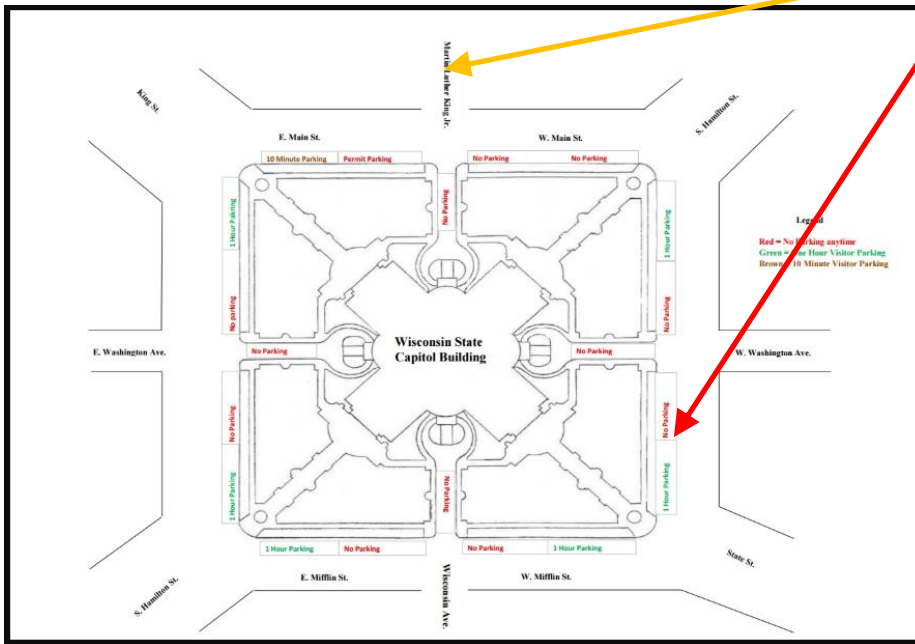
Park and head towards the Capitol! A little walk, only about a block.



Time to get your bearings.

If you are good at directions (meaning, with a compass) – your day just got a heck of a lot easier – so let's see if we can put some visual aids down to help those (*like me*) that are directionally challenged!

Assuming you took the parking suggestion, you should be walking TOWARDS this door (red arrow) – BUT – it's LOCKED! – take a right and head around the side of the capitol to the Martin Luther King Jr. entrance (GROUND LEVEL, yellow arrow).

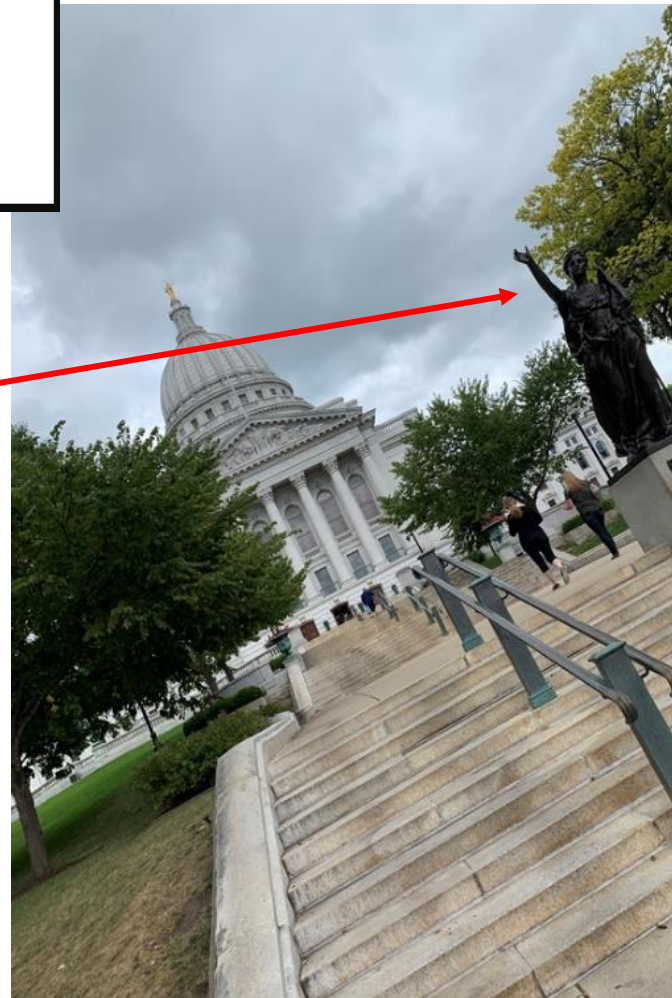


Not super helpful, is it? It all looks the same! I get it.

\*reminder this is IF you took the parking suggestion.

Well, you should be seeing this statue upon arrival.

This is the STATE STREET entrance of the Capitol. Head up the steps, Turn Right, walk around the corner until you see an entrance that has Steps going up – as well as an overhang – THAT is the ground entrance that will be open.



# Now, let's go inside!

You'll be entering at the ground level...

Here's the next part to remember. LEVELS are as important as DIRECTIONS.

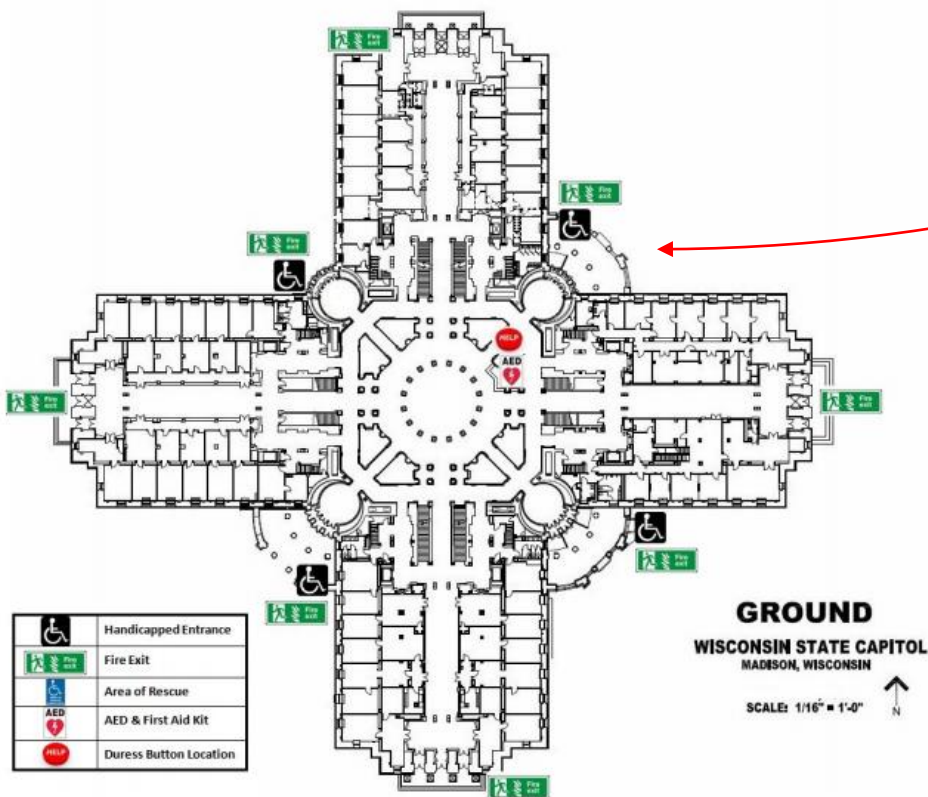
Ground level – (think of numbers 1 through 99).

The capitol offices are organized by wing and floor. So, if your rep's office is 10N, you will be ground level (where you entered) on the North side.

Stay with me. It sounds pretty easy, right?

Well friends, here's the ground floor from the office perspective,

Link to all floors: <https://legis.wisconsin.gov/assembly/asgt/media/1325/capitol-maps.pdf>



It's a lot, right?

The office doors are literally EVERYWHERE.

But if you pay attention to the wing and number there is a method to the madness.

On the top of each door will be the office number and wing.



For example, this is the south wing of the 4<sup>th</sup> floor.

## You've got this!

**Here's a Fun Fact:** our hearing room is only called "GAR"

*So that means you have to GUESS what floor it is on!*

*Just kidding.* It's on the fourth floor. 😊 I told you we've got you!

Here's even a picture of what it looks like.



**\*\*FUN FACT:** this is a picture of the room filling up for our March 2, 2020 hearing with DHS. Let's PACK it again!

When you walk in the rotunda – look for the NORTH set of stairs (or NORTH elevator) **\*\*Don't worry, we will have greeters in the rotunda with WUFF buttons in the morning to help you! Head up to the FOURTH floor on the NORTH wing – and you will head down a long hallway to the GAR! (aka room 416 North).**



# Alright – back to the layout.

So, now you have the basics.

It seems easy. But I'll tell you this... I have been there a hundred times and I STILL can get flipped around!

It all looks the same in there. You walk out of an office and suddenly you are in the North wing but thought you were in the Southeast (oh yes, there are offices in ALL fantastic directions!).

Don't fret. There are ways to help you get your bearings.

1. The rotunda (center, open area) is an easy way to "reset" your location. Get to the center and start over if you get lost.
2. There are markers on the N, S, E, W wings above the main stairs on the second level. If you get to the rotunda and can see these- it will help. The problem is, they aren't readily visible from all levels.
3. Level two. There's a Liberty bell replica. If you see it, that's the SOUTH side.  
Fun Fact: Senator's offices are in the South wing



## Tips and Tricks (Lessons learned? Whatever you want to call it)

1. Sometimes you will hit what **looks** like a dead end while in route to an office. Open the door! It just leads to another hallway and will keep you from having to detour back.



2. Bathrooms. Look by nearly every set of stairs. You might have to venture a bit to find men's/women's, but the stairs are typically the home location.
3. The marble stairs that come off from the rotunda are only on the first couple floors. Beyond that, you will need to head toward the edge of the building to locate the stairs. This one is hard to explain, but I hope it will make sense when you are there.



That's It!

Do you feel a little more prepared?

I hope so.

And remember – we were all YOU once. You will not be doing this alone.

*We will have greeters in the rotunda to help guide you in the morning.*