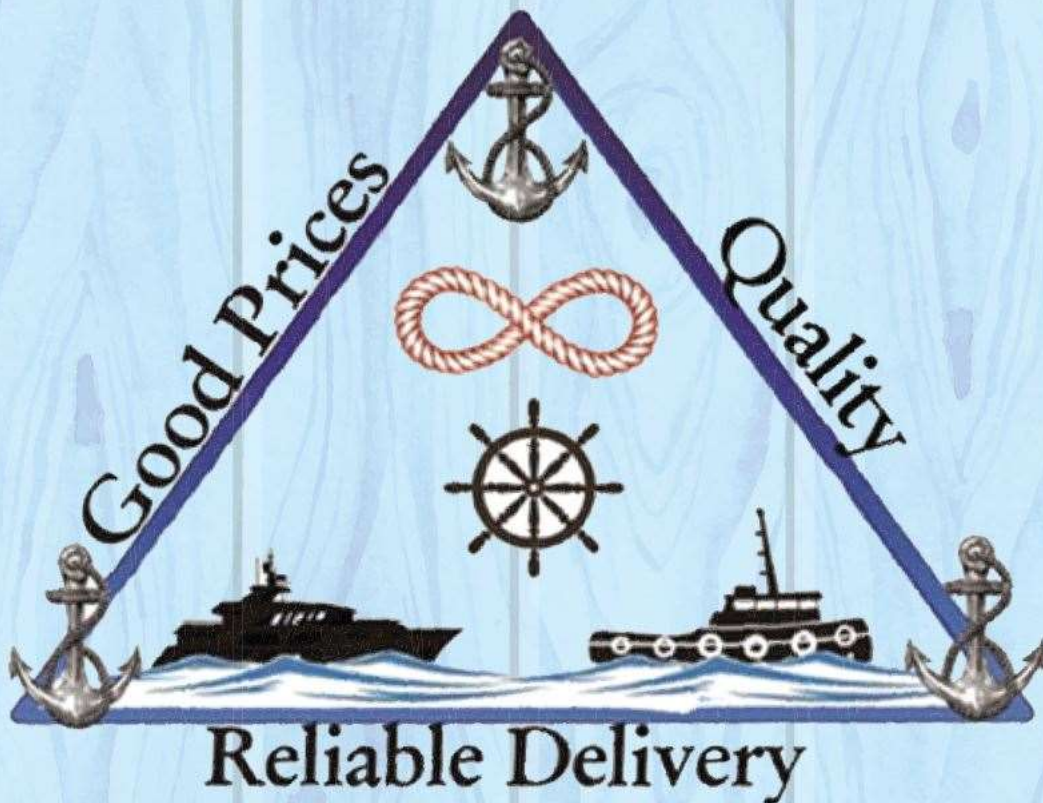


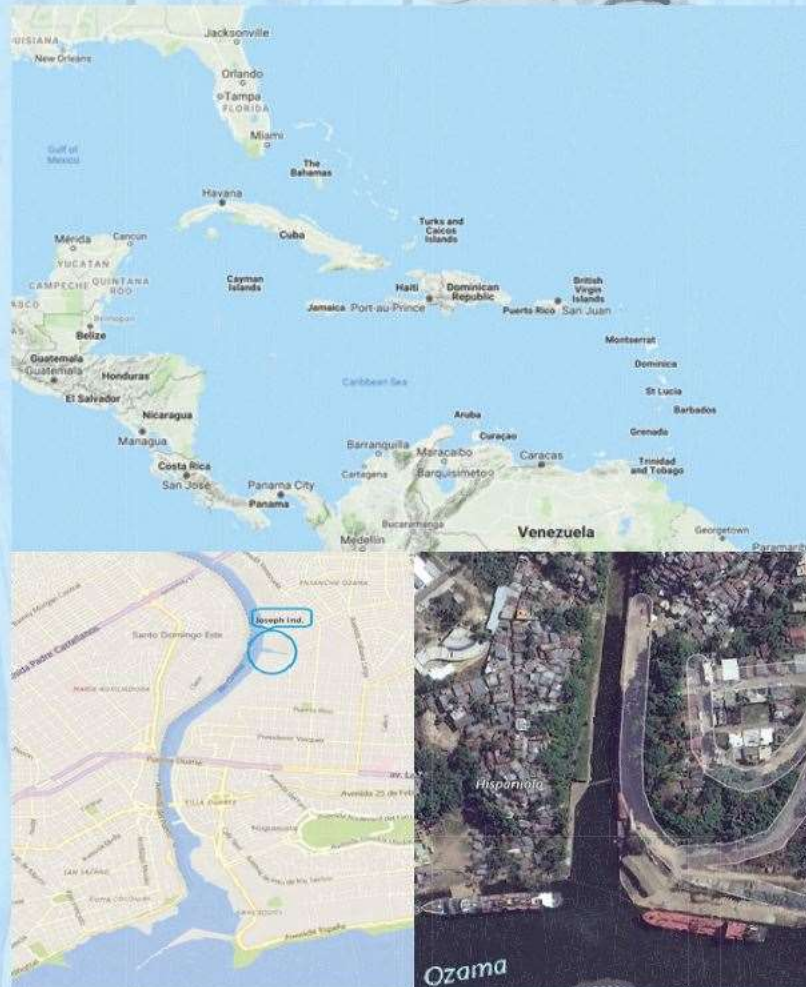
Joseph Industrial Development Corp.

Shipyard & Drydock



Where quality and service are a priority
Where your ships are part of our family

Our Facilities



Strategically located in the Dominican Republic in “The heart of the Caribbean”. Our installations are located near major ports, airports, hotels, shops and industries, to make ship repairs fast reliable and convenient.

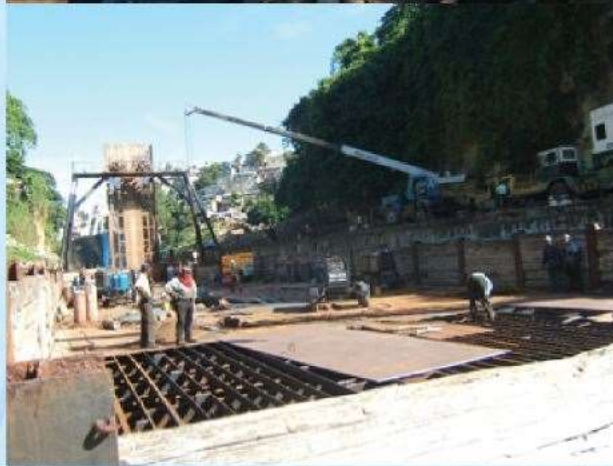
Drydock Specifications



Lower section	(500ft length & 60ft Width)
Upper section	(300ft length & 60ft Width)
Docking Space	(1,000ft length)
Draft	18ft
Air draft	90ft

For bigger ships we can do repairs afloat in the different ports in the country.

Services



Steel works
Conversions
Electrical Works
Machine shop
Pump Repairs

Sandblast & Painting
Engine works
Audio Gauging
Tank Cleaning
Shaft repairs

Or any service needed by vessels afloat or in the Drydock

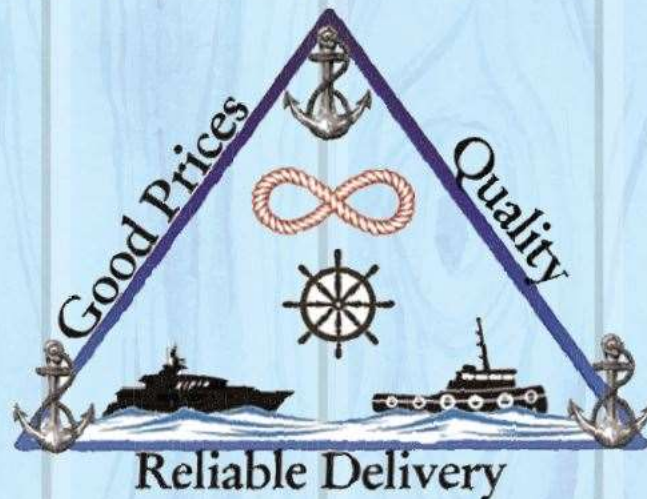
Equipment



Generators
Diesel welding machines
Air Arc Gouging
Airless Spray Paint
Cranes

Electric Welding Machines
Compressors
Sand Pots
Air ventilators
Forklifts

With a warm weather year-round, reliable technical staff and great logistics, your vessel(s) will be greatly taken care fast with quality service.



Please contact us for all the necessary services that your ship needs.

Address: Juan Goico Alix (Al final), Ensanche Ozama, Santo Domingo
Este Republica Dominicana

OfficeTel. (809)-543-7705

Webpage www.josephindustrial.com

Email: joesteel@josephindustrial.com