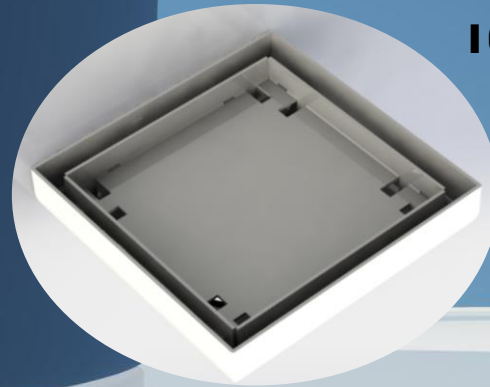


KP METALS

A Melbourne based design and manufacturing company for drainage solutions and custom based fabrication of 316l stainless steel products.

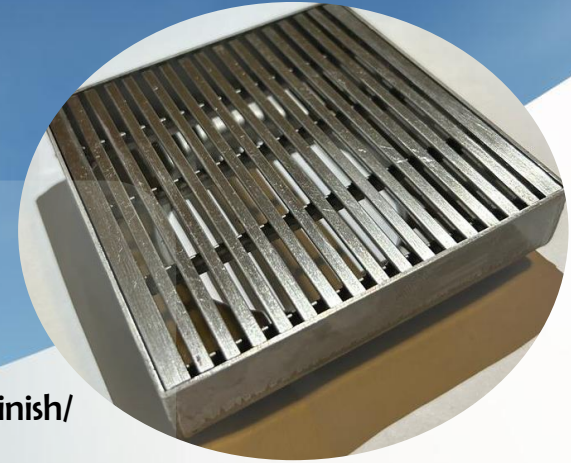
Why KP Metals?

- ❖ Highly Experienced Team
- ❖ Quality Customer Care
- ❖ Very Competitive Price
- ❖ Design 3d Models
- ❖ Fabricate And Weld Products
- ❖ 10-year Warranty On Selected Products



101MM WET AREA GRATE POINT DRAIN

Size	-	101*101*22 mm
Height	-	20 mm
Outlet Size	-	89/76/65 mm
Insert Material	-	Grate
Finish	-	Stainless Steel/ Matte Finish/ Custom Color
Grade	-	316l
Application	-	Wet Areas



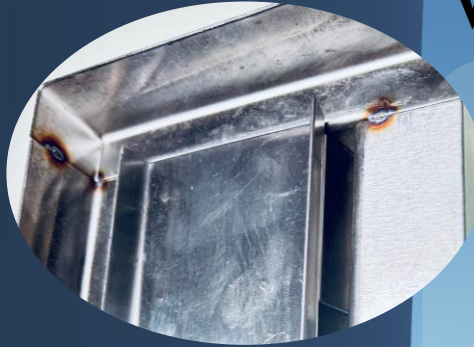
101MM WET AREA POINT DRAIN- TILE INSERT

Size	-	101*101*22 mm
Height	-	20 mm
Outlet Size	-	89/76/65 mm
Insert Depth	-	12 mm
Insert Material	-	Stone/Tile (not included)
Finish	-	Stainless Steel/Matte Black/Custom Color
Grade	-	316L
Application	-	Wet Areas

For More Information

Visit kpmetals.com.au

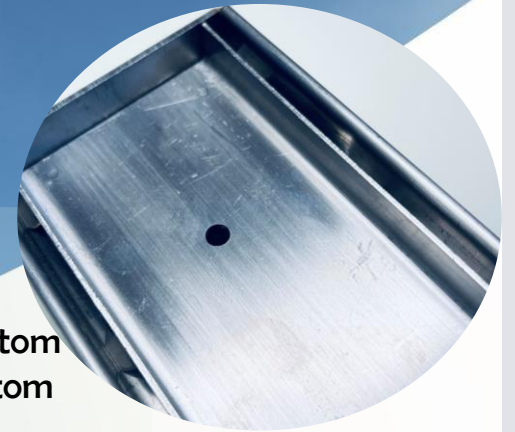
WALL FLANGE V/FLAT- TILE INSERT TROUGH



Insert Width	-	100/75/50 mm/Custom
Insert Depth	-	As Required
Channel Length	-	As Required
Channel Depth	-	As Required
Channel Width	-	As Required
Flange Width	-	As Required
Finish	-	Standard/Matte Finish/ Custom Color
Outlet Sizes	-	38/45/50/65/76/90 mm
Material	-	Marine Grade 316l Stainless Steel

V-CHANNEL – TILE INSERT

V-channel Width	-	110/85/60/Custom
V-channel Length	-	As Required
V-channel Depth	-	Standard Deep – 30 mm /Custom
Insert Depth	-	Standard Deep – 10 mm /Custom
Insert Width	-	00/75/50/custom
Outlet Size	-	38/45/50/65/76/90
Material	-	316l Stainless Steel
Finish	-	Standard Stainless Steel/ Matte Black / Custom Color



V-CHANNEL - GRATE

Grate Width	-	100/75/50
V-channel Width	-	110/85/60/Custom
V-channel Length	-	As Required
V-channel Depth	-	Standard Deep – 30 mm/ Custom
Outlet Size	-	38/45/50/65/76/90
Material	-	316l Stainless Steel
Finish	-	Standard Stainless Steel/ Matte Black/ Custom Color



For More Information

Visit kpmetals.com.au

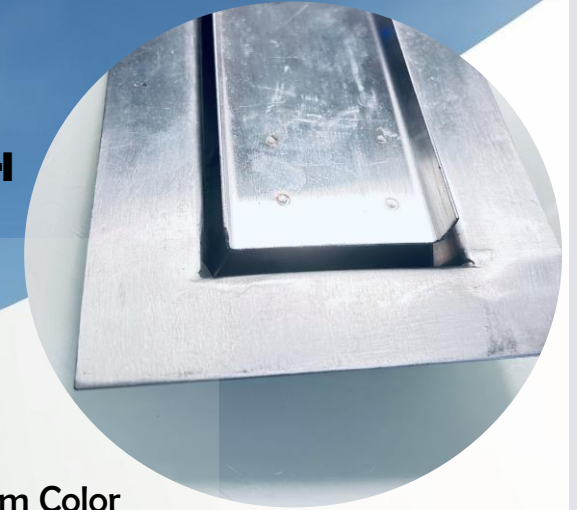
WALL FLANGE- V/FLAT - GRATE EDGE TROUGH



Channel Insert	-	Grate
Grate Width	-	100/75/50 mm/Custom
Channel Length	-	As Required
Channel Depth	-	As Required
Flange Width	-	As Required
Finish	-	Standard/Matte Black/ Custom Color
Outlet Sizes	-	38/45/50/65/76/90 mm
Material	-	316l Marine Grade Stainless Steel

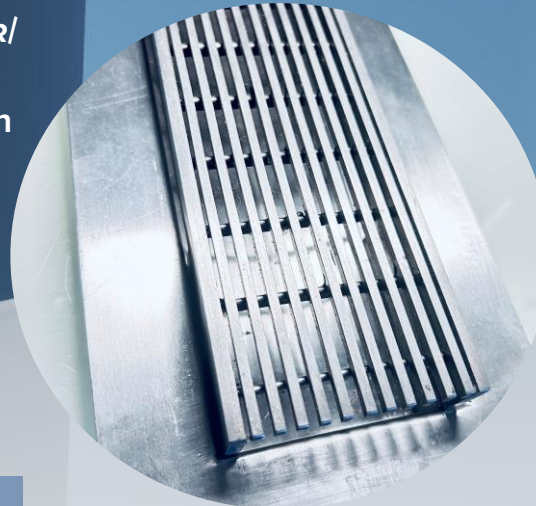
V/FLAT- BOTTOM FLOOR FLANGE EDGE TROUGH - TILE INSERT

Insert Width	-	100/75/50 mm/Custom
Insert Depth	-	As Required
Channel Length	-	As Required
Channel Depth	-	As Required
Channel Width	-	As Required
Finish	-	Standard/Matte Finish/Custom Color
Outlet Sizes	-	38/45/50/65/76/90 mm
Material	-	Marine Grade 316l Stainless Steel



V/FLAT- BOTTOM FLOOR FLANGE EDGE TROUGH - GRATE

Insert Width	-	100/75/50 mm/Custom
Insert Depth	-	As Required
Channel Length	-	As Required
Channel Depth	-	As Required
Channel Width	-	As Required
Finish	-	Standard/Matte Finish/Custom Color
Outlet Sizes	-	38/45/50/65/76/90 mm
Material	-	Marine Grade 316l Stainless Steel



For More Information

Visit kpmetals.com.au

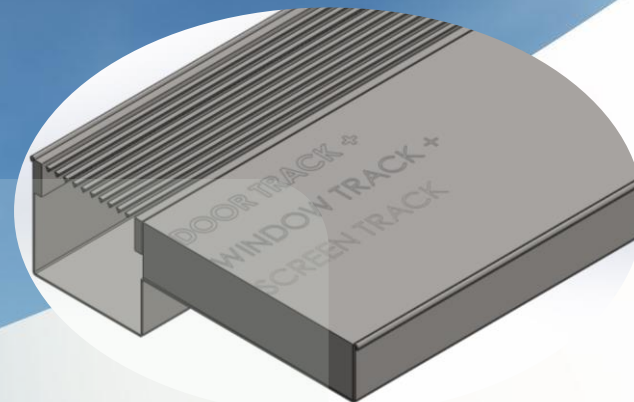
FLAT BOTTOM-TILE INSERT



Channel Width	-	110/85/60/Custom
Channel Length	-	As Required
Channel Depth	-	Standard Deep – 23 mm/ Custom
Insert Depth	-	Standard Deep-12 mm/ Custom
Outlet Size	-	38/45/50/65/76/90
Material	-	316l Stainless Steel
Finish	-	Standard Stainless Steel/ Matte Black/Custom Color

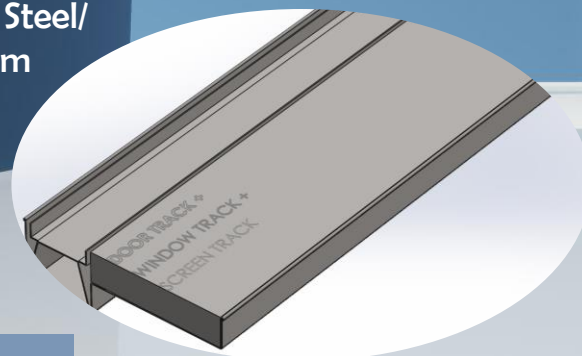
THRESHOLD - GRATE

Insert	-	Grate
Insert Sizes	-	100/75/50 mm
Track Length	-	As Required
Track Width	-	As Required
Finish	-	Standard/Matte Black/ Custom Color
Outlet Sizes	-	38/45/50/65/76/90 mm
Material	-	316l Marine Grade Stainless Steel



THRESHOLD TILE INSERT DRAIN

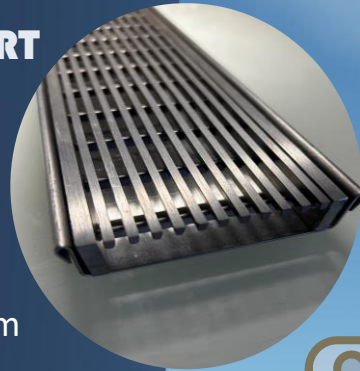
Insert Width	-	As Required
Insert Depth	-	As Required
Track Length	-	As Required
Track Width	-	As Required
Finish	-	Standard/Matte Black/Custom Color
Outlet Sizes	-	38/45/50/65/76/90
Material	-	316l Marine Grade Stainless Steel



For More Information

Visit kpmetals.com.au

FLAT BOTTOM-CHANNEL-GRATE INSERT



- Grate Width - 100/75/50
- V-Channel Width - 110/85/60/custom
- Channel Length - As Required
- Channel Depth - Standard Deep – 23 mm/
Custom
- Outlet Size - 38/45/50/65/76/90
- Material - 316l Stainless Steel
- Finish - Standard Stainless Steel/
Matte Black / Custom
Color

Contact Us

Phone No: 0407151099

Email: sales@kpmetals.com.au

For More Information

Visit kpmetals.com.au