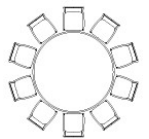
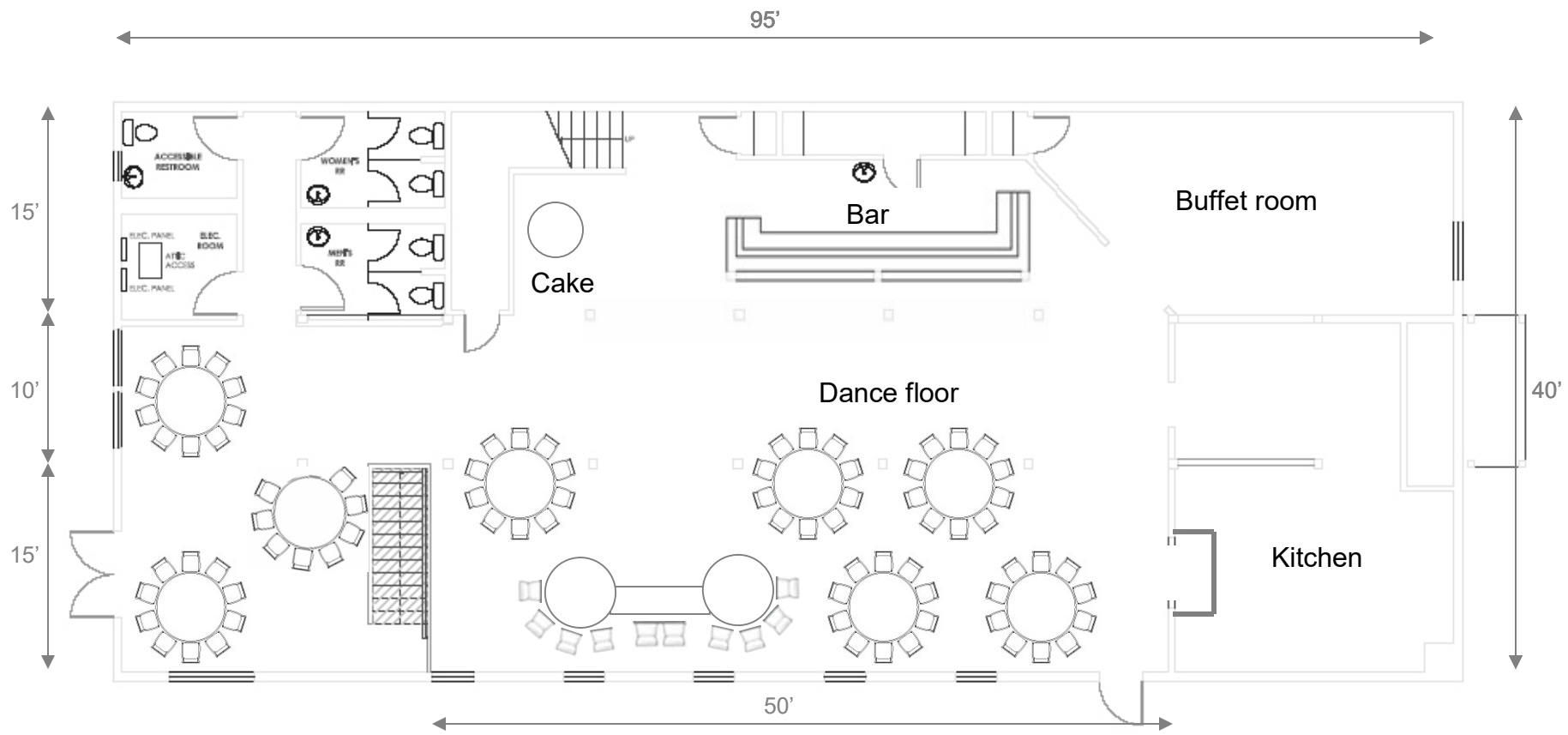


Main floor plan

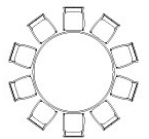


60" table with
10 chairs

□ Support post

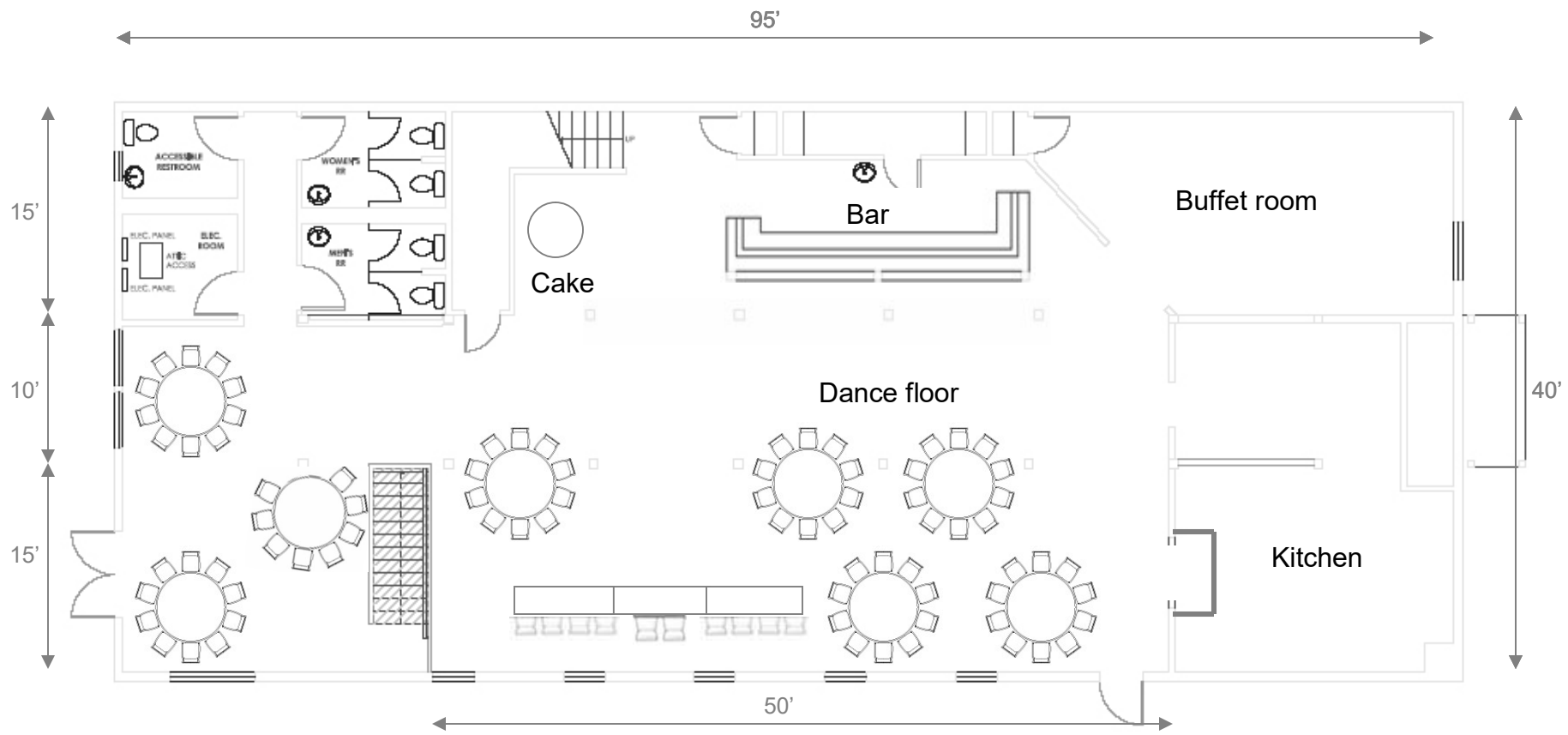


Main floor plan - 90 guests with bridal party table

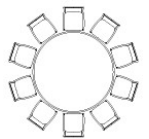


60" table with 10 chairs

□ Support post

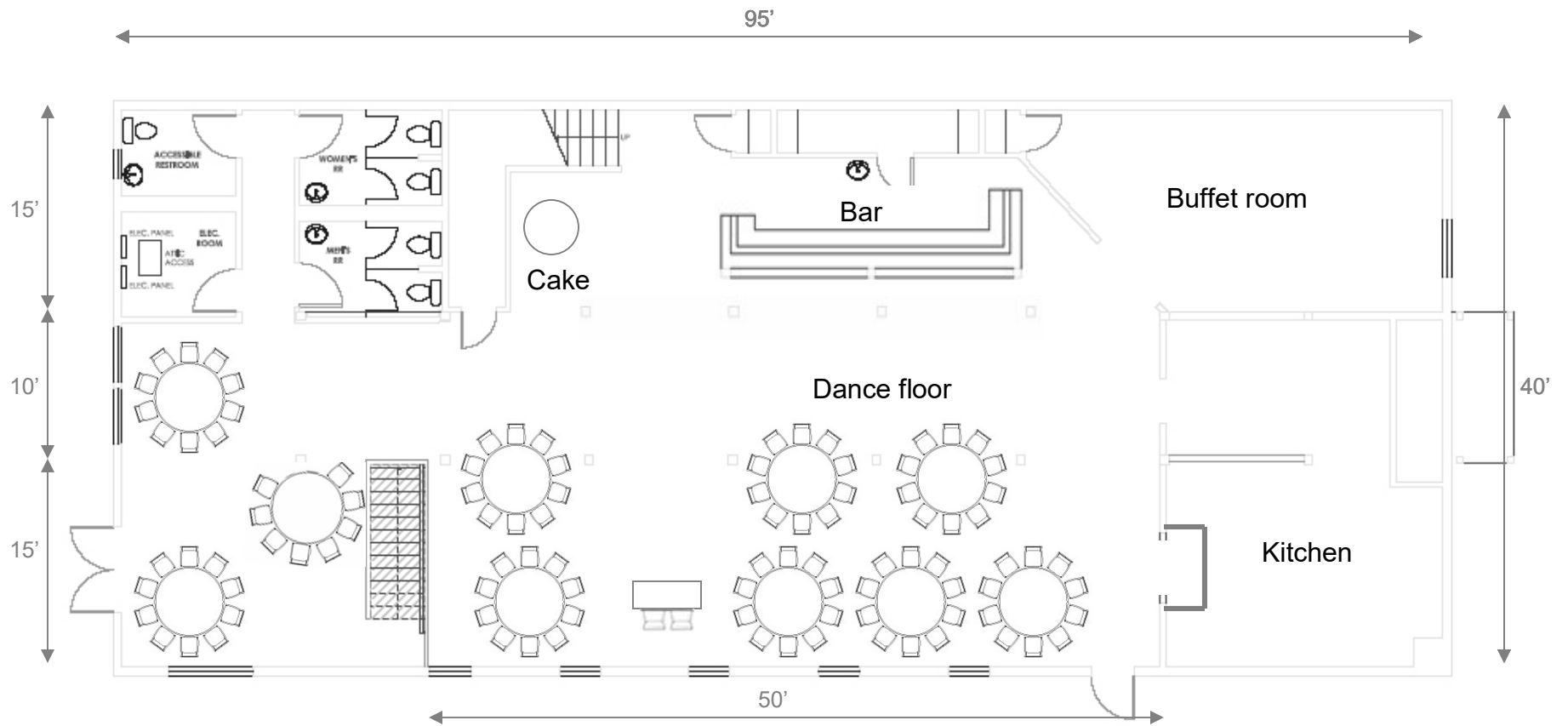


Main floor plan - 90 guests with bridal party table

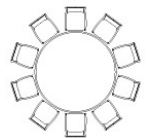


60" table with 10 chairs

□ Support post

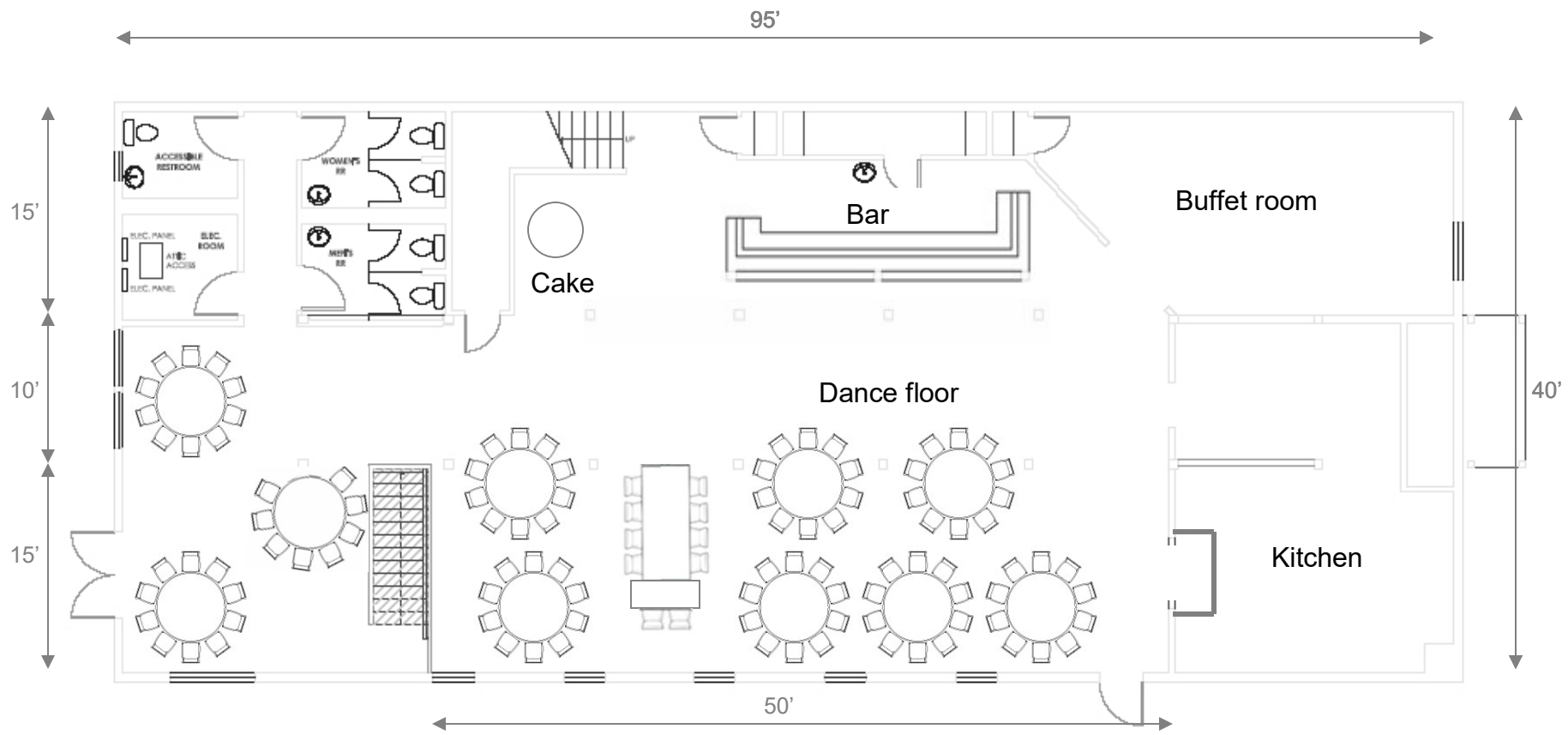


Main floor plan – 100 guests with sweetheart table

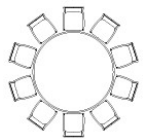


60" table with
10 chairs

□ Support post

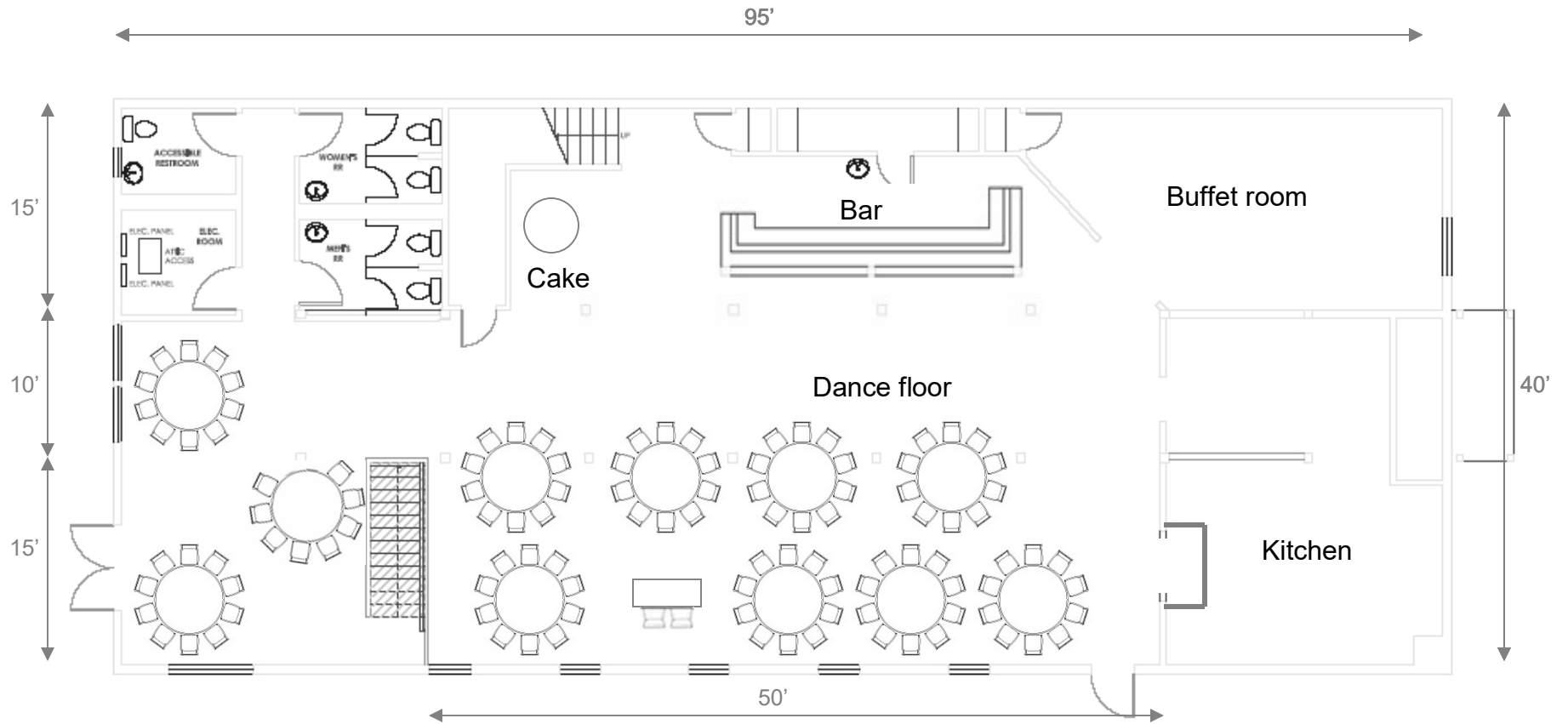


Main floor plan - 110 guests bridal party table

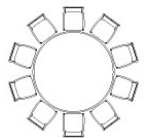


60" table with 10 chairs

□ Support post

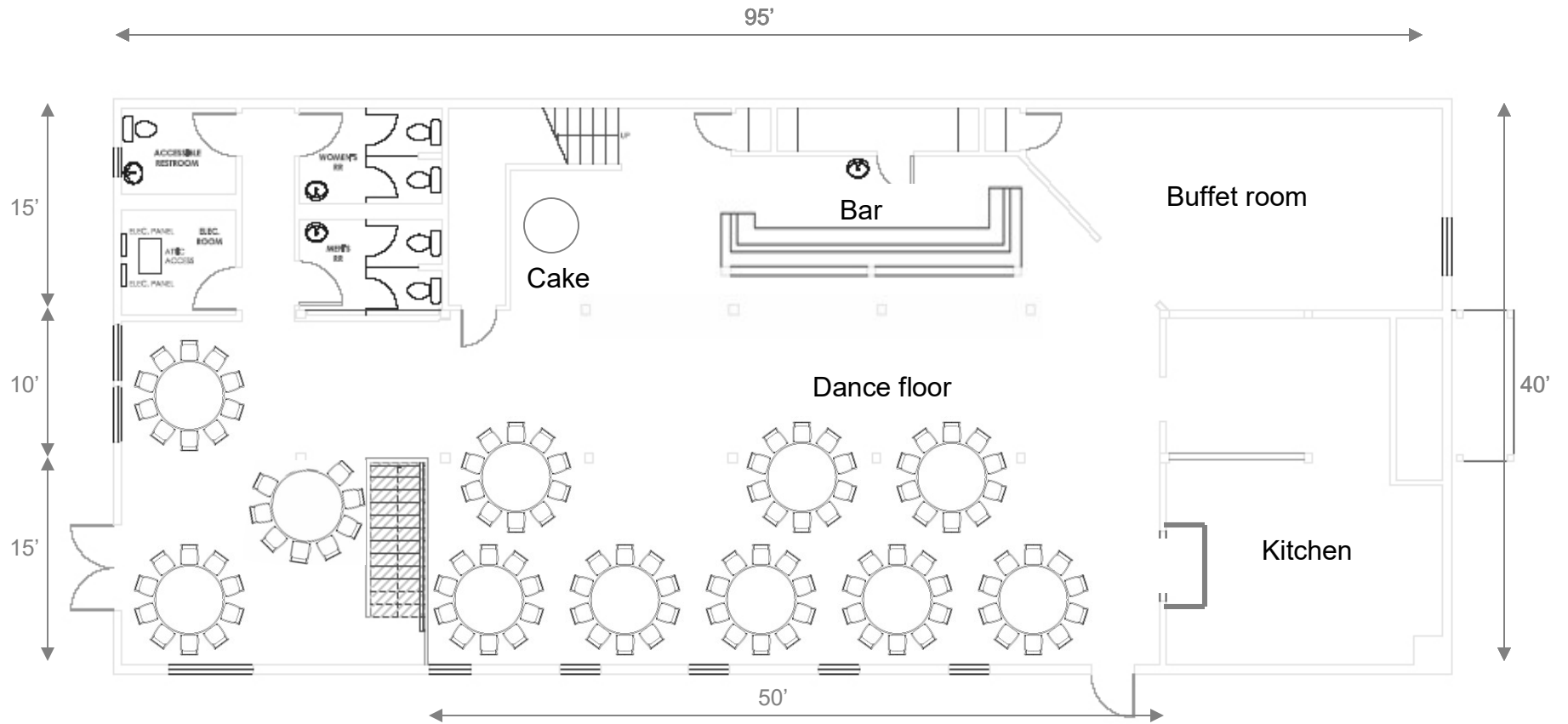


Main floor plan – 110 guests with sweetheart table

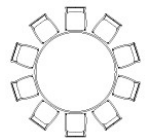


60" table with
10 chairs

□ Support post

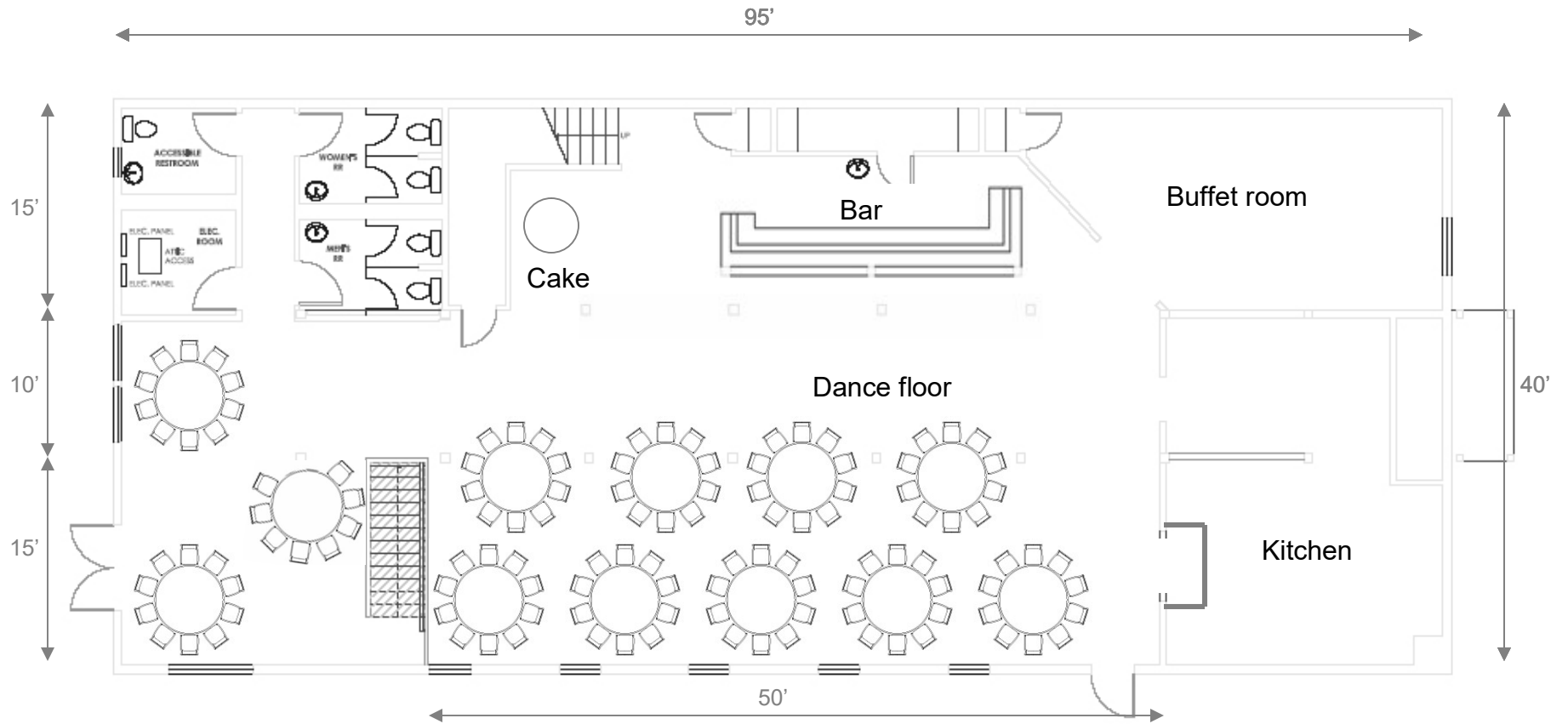


Main floor plan – 110 guests

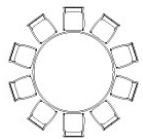


60" table with
10 chairs

□ Support post



Main floor plan – 120 guests

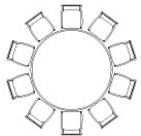


60" table with
10 chairs

□ Support post



Basement floor plan

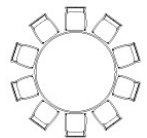


60" table with
10 chairs

□ Support post



West wing Wisteria Courtyard floor plan

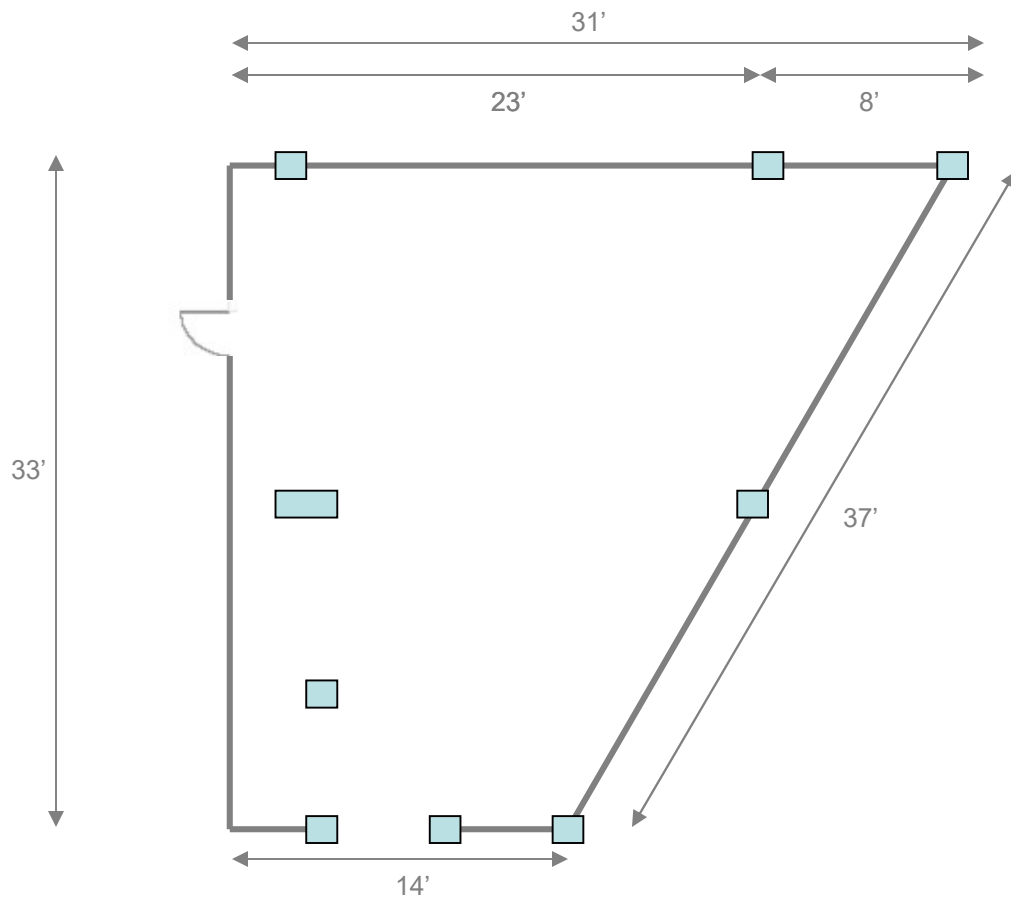


60" table with
10 chairs

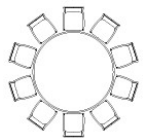


Support post

Main building



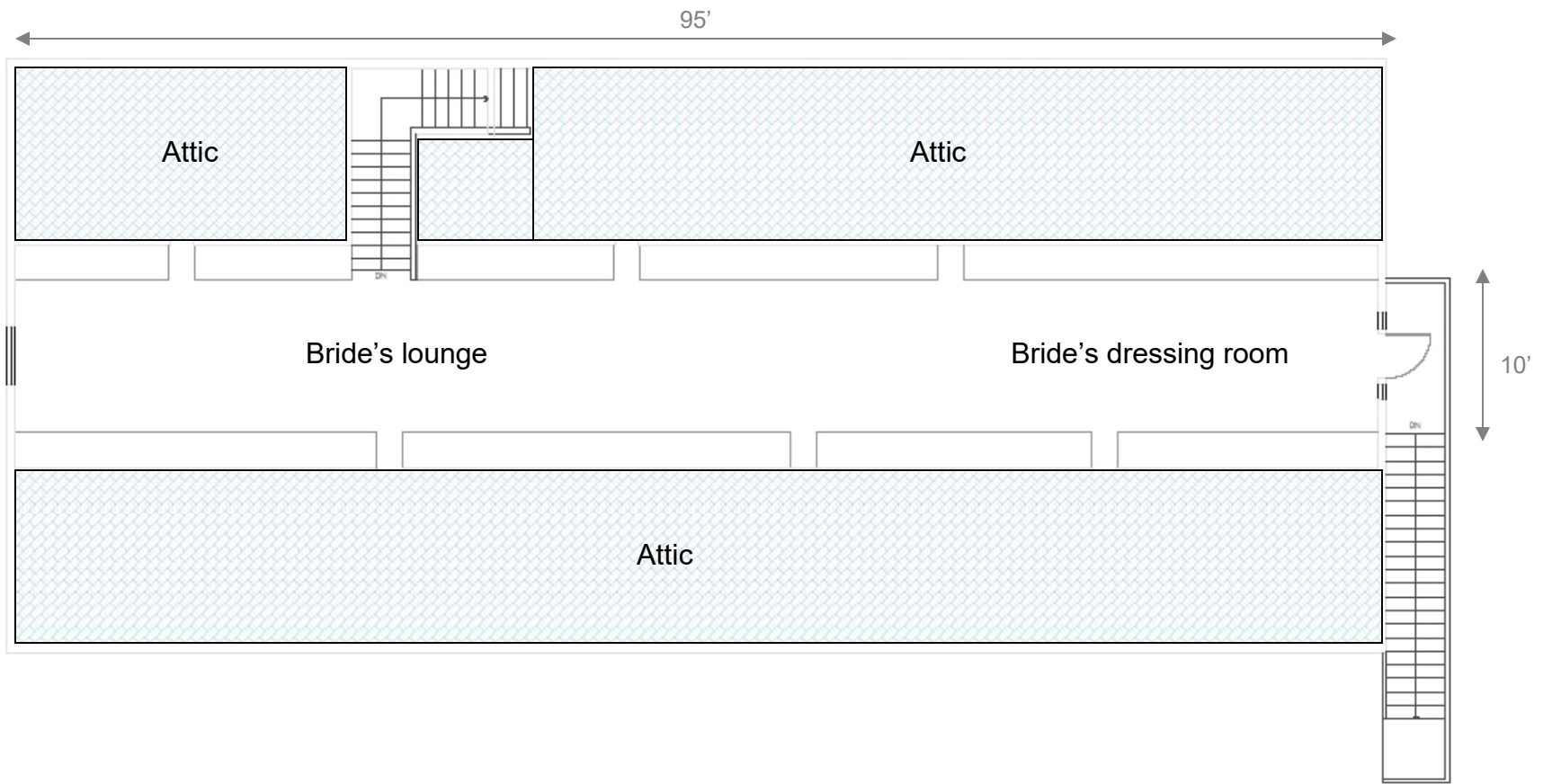
East wing Rustic Lodge floor plan



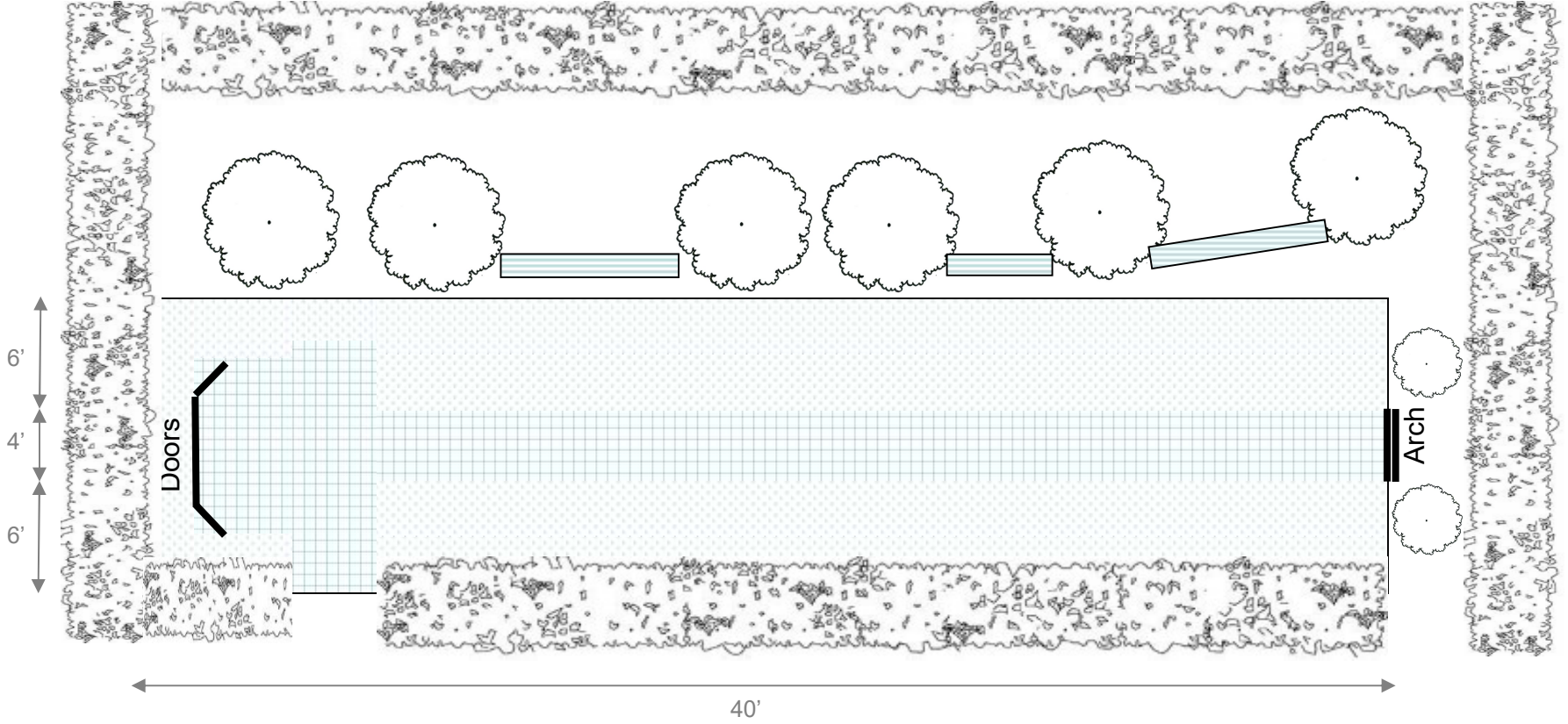
60" table with
10 chairs



Support post



Upstairs bride's room and lounge floor plan



40'

6'
4'
6'

Doors

Arch

Bridal Park