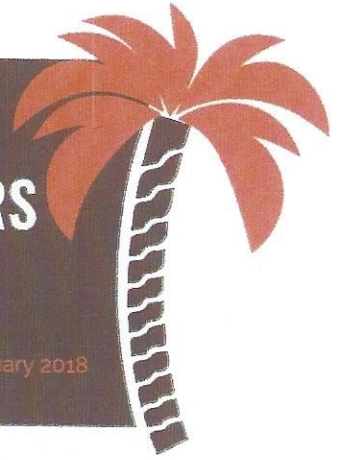




TORAH | Π
EDUCATORS
NETWORK
Spreading Michardim from Coast to Coast

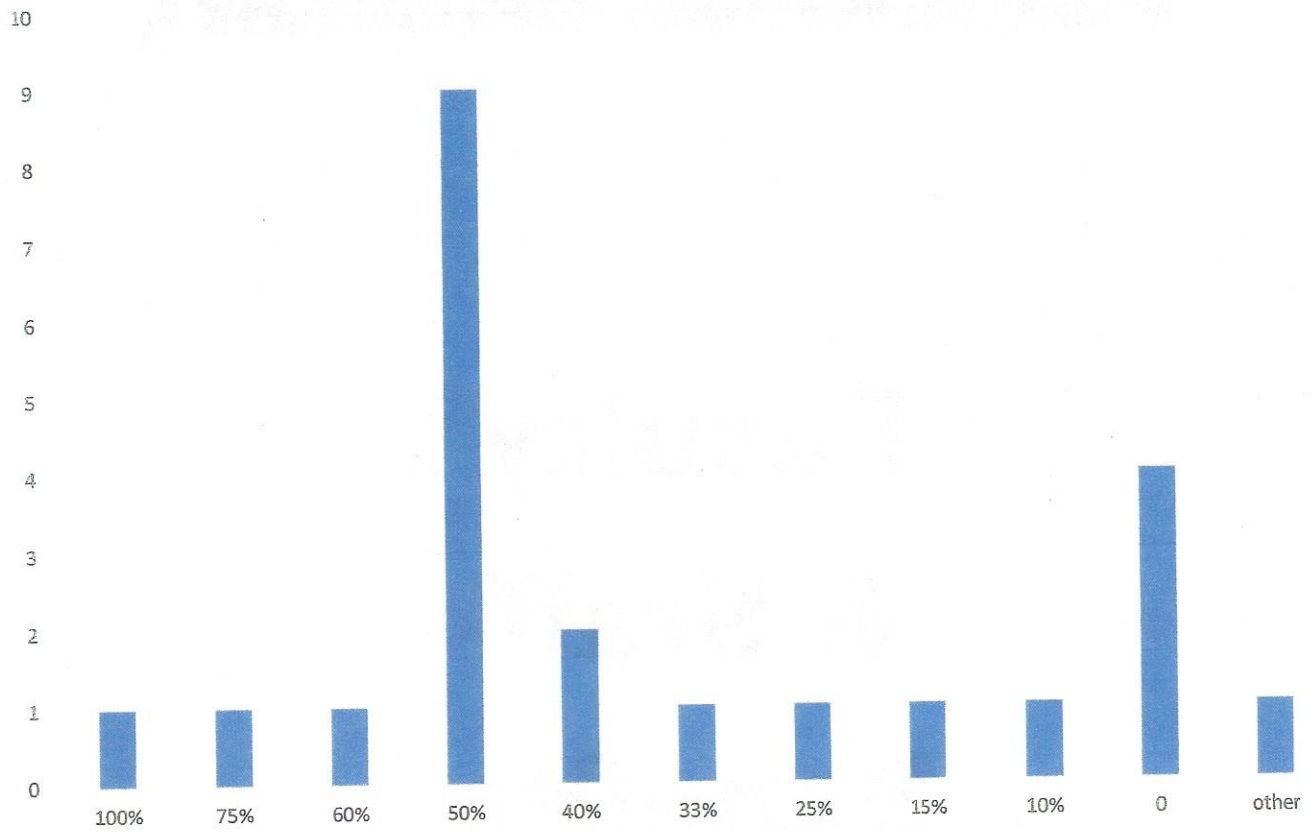
Inaugural
EXECUTIVE DIRECTORS
Conference

Katz Yeshiva High School of South Florida • February 2018



**Faculty
& Staff
Benefits**

Tuition Discount for Children of Faculty Members



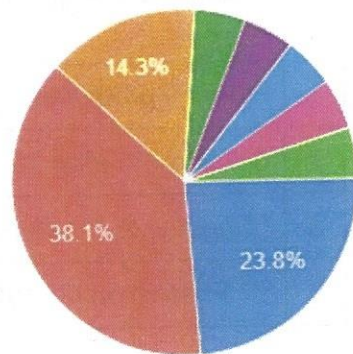
If you offer a pension benefit, please indicate how much you match.

21 responses

No Employer Contribution	Employer Contribution		Employer Matching		
	No Match Required				
4	1%		1%	1	Plus 1% profit sharing
	2%	1	2%	1	Goes to 3% after 10 yrs at school
	3%		3%	3	* Begin yr 2; ** W2 only; ^Hired >2006
	4%		4%	2	*** Federation Guidelines
	5%		5%	1	
	6%	1	6%		
	7%		7%	2	^Hired <2006; ^^Up to 64k, then 3%;
	8%		7.5%	1	
	Year 1: 0 Years 2-5: 3.5% Years 6-9: 6.5% Years 10-14: 8.5% Years 15+: 9.5% (of W2 income)		8%	1	
	\$1500	Flat Amount			

Does your school offer any disability plans for staff? Does the school contribute?

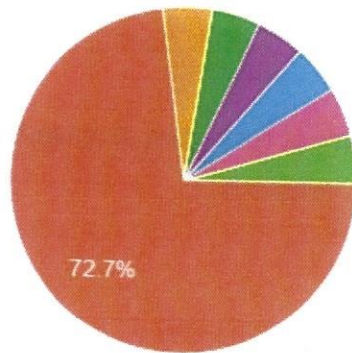
21 responses



- No
- Yes, but we don't contribute
- Yes, and we contribute (right amount(s) next to "Other" below)
- Through AFLAC, employees pay for their selections
- SAR fully funds a short term disa...
- only mandated
- whatever NY State requires - em...
- 100% for STD; 3% of salary for L...

Does your school offer a dental plan to staff? Does the school contribute? Please provide details.

22 responses



- No
- Yes, but we don't contribute
- Yes, and we contribute (right amount next to "Other" below)
- SAR pays for single coverage for all staff who have completed at l...
- Minimally
- 100%
- 50%
- 3% of salary - hebrew union; 100...

Are there any other benefits that you offer your staff?¹¹ responses

No (2)

FSA plan (both medical and dependent care)

Qualified Tuition. 10 personal days (and 10 vacation for 12 month employees) - paid back for unused time at \$15/hr. Parsonage for those that meet requirements.

FSA, wameworks, commuter plan

Flex Spending for Medical and Dependent Care; Premium only Plan (POP) for insurance premiums for covering dependents

Flex Spending Account

Lunch, vision,

hsa and fsa plans

free early drop off and aftercare for staff who have students at our nursery program, QTR, Long Term

Disability for employees (after 3 years of employment)

Aflac and discount on lunch



Life Insurance Fund

This fund was designed to provide full time Jewish educators in the New York City Metropolitan area with Cost Free Life Insurance. The amount of life insurance coverage is up to \$125,000. Participants in the Life Insurance Program must be employed for a minimum of twenty (20) hours per week in *eligible positions* in yeshivot and day schools; and a minimum of twelve (12) hours per week in supplementary schools. In order to participate in this program, the school must meet the criteria and be eligible for the Fund for Jewish Education (FJE) programs.

This program is funded by the Fund for Jewish Education (sponsored by UJA-Federation and Gruss Life Monument Funds).



© 2018 Gruss Life Monument Funds, Inc.

