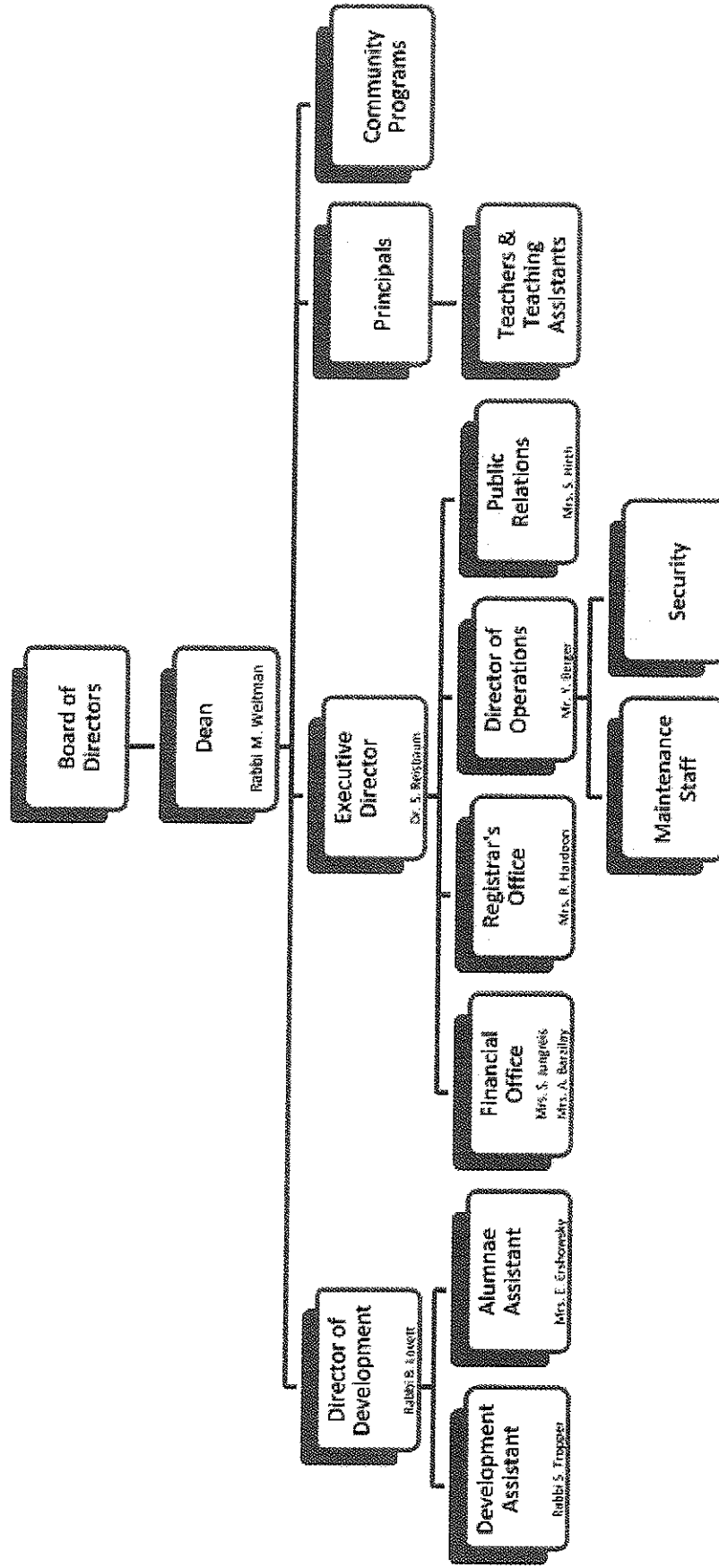
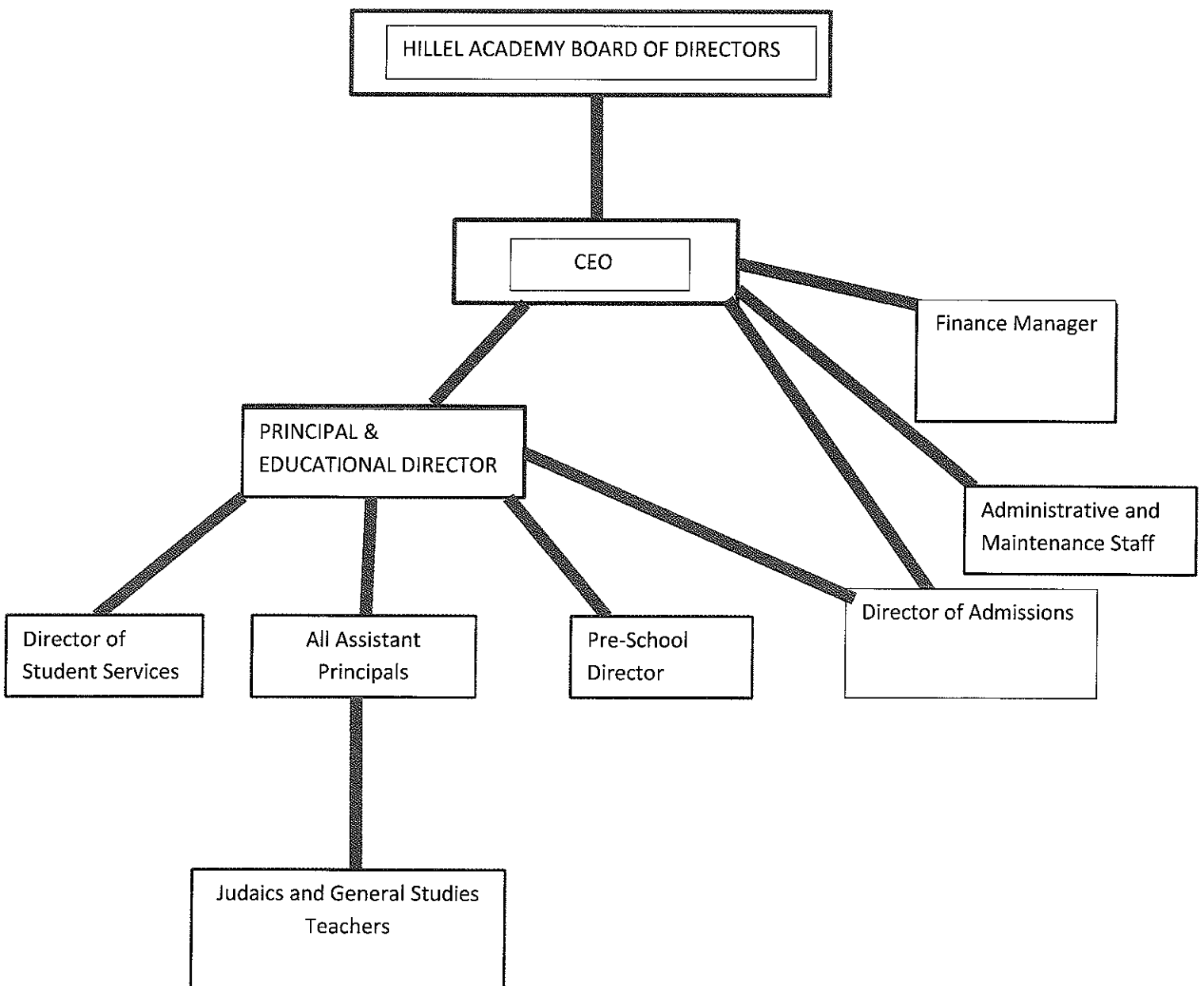


Organizational Chart - Large School >600 Torah Academy for Girls



HILLET ACADEMY OF PITTSBURGH (Medium School 300-600) ORGANIZATIONAL CHART

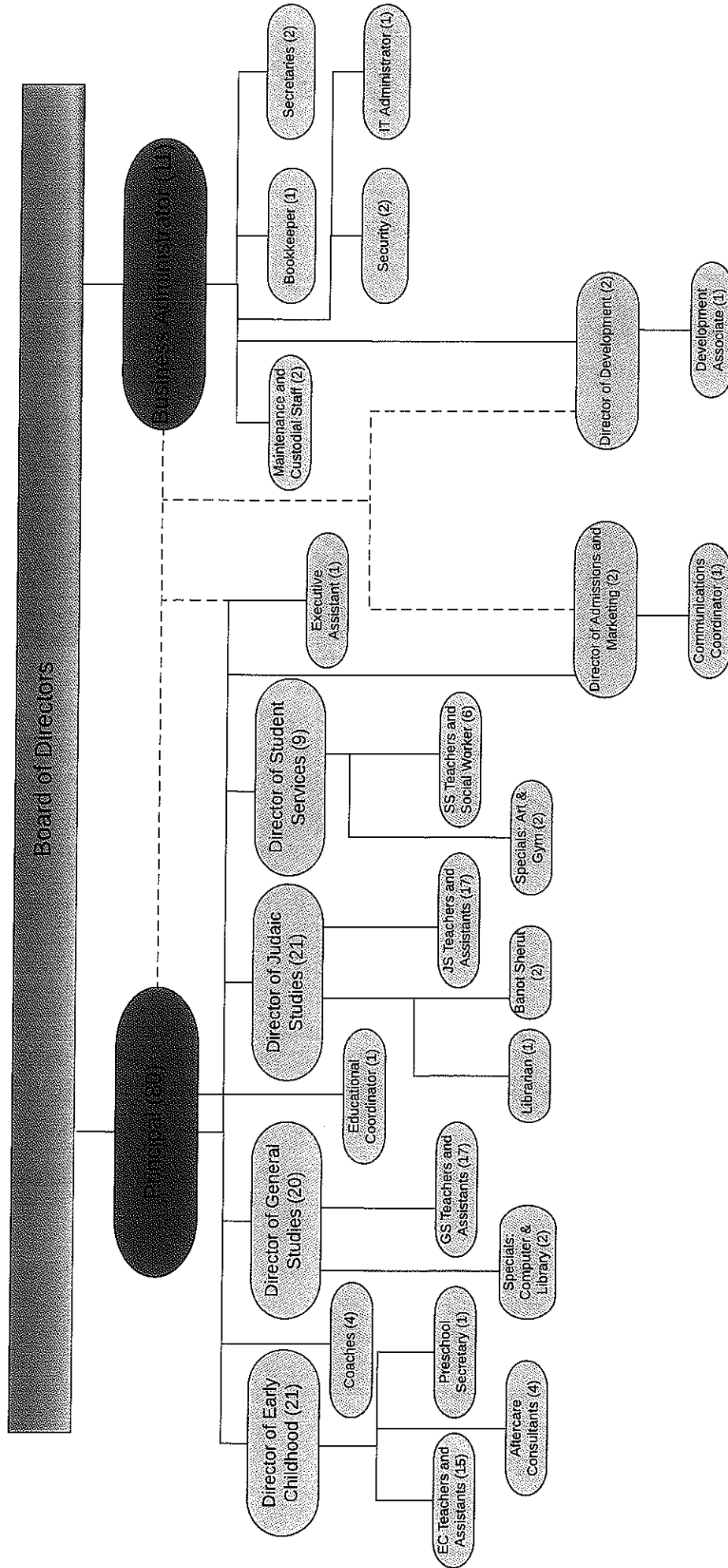




Hillel Torah
NORTH SUBURBAN DAY SCHOOL
תורה שבת ויום טוב

Mid-size 300-600

Organizational Chart



—— Solid Lines Indicate that a Position Reports to a Single Manager

- - - - Dashed Lines Indicate that a Position Reports to Multiple Managers

Medium 300-600

Administrator and Office Staff Roles
2018-19

Senior Level Administrative Team:

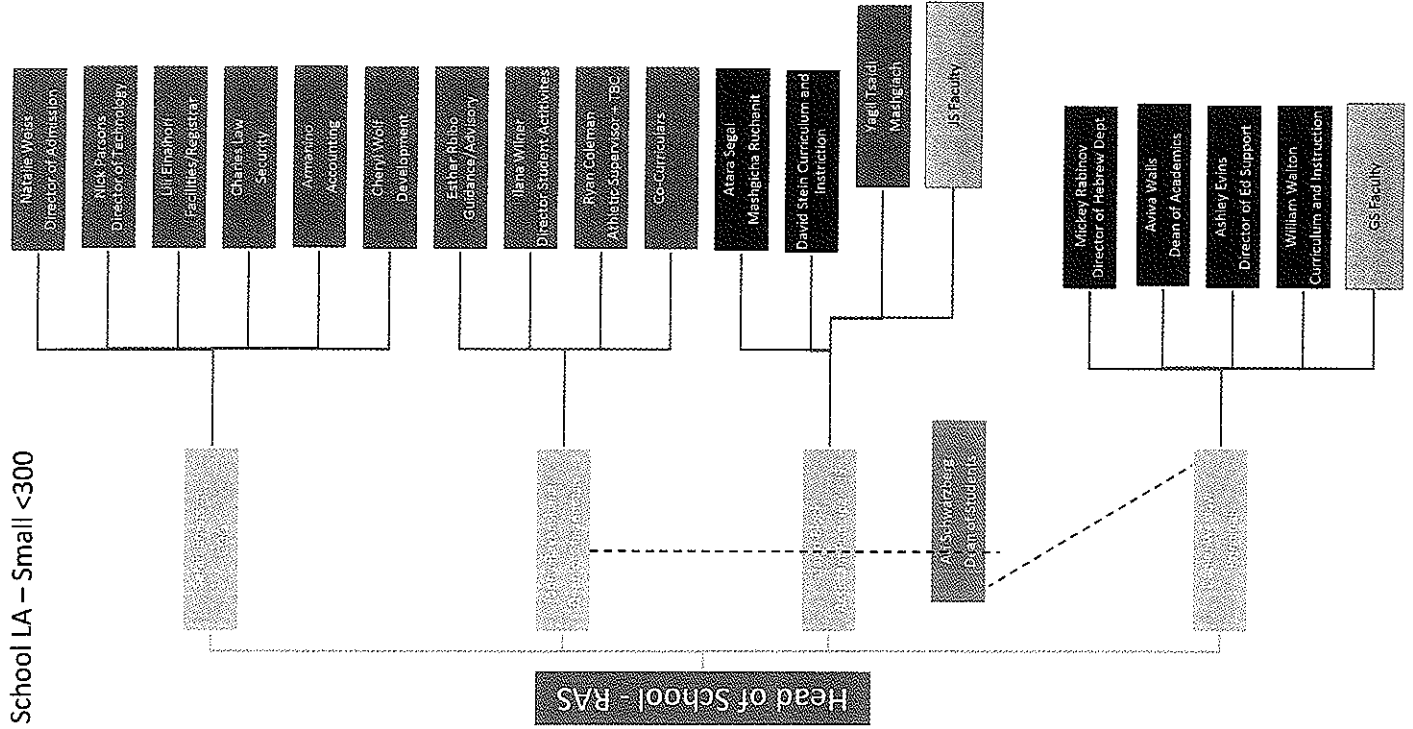
Name	Title	Email Address	Area of Expertise @ TDSA
Rabbi Meir Cohen	Head of School	rabbicohen@torahday.org	Oversees all aspects of school. Will directly oversee Limudei Kodesh Program and discipline this year.
Mindy Haller	Head of General Studies	mhaller@torahday.org	Oversees the General Studies Program
Marcy Kalnitz	Director of Finance and Development	mkalnitz@torahday.org	Oversees Business and Development office

Other Administrators and Office Staff you may interact with during the year:

Name	title	Email Address	Area of expertise @ TDSA
Fraidy Alon	School Nurse	nurse@torahday.org	Health policies and procedures
Chashy Alterman	K-8 Girls Judaic Activities Coordinator	calterman@torahday.org	Plans and runs Judaic, co-curricular activities
Kay Fink	Human Resource Manager and Financial Administrator	kfink@torahday.org	Bookkeeping and Human Resources (benefits & compensation)
Brannon Fissette	IT Director	bfissette@torahday.org	Technology infrastructure
Channah Garfinkel	Registrar and program manager	cgarfinkel@torahday.org	TDSA Connect management, after school activities and other operational logistics.

Jude Hasken	Facilities Director	jhasken@torahday.org	Facility maintenance and rentals
Rabbi Moshe Hiller	Limudei Kodesh Curriculum Coordinator	mhiller@torahday.org	Monitoring and improvement of Judaic curriculum
Rabbi Shalom Horowitz	K-8 Boys Judaic Activities Coordinator	shorowitz@torahday.org	Plans and runs Judaic, co-curricular activities
Elana Klemm	Counselor	eklemm@torahday.org	Student social/emotional needs
Malka Landman	Resource Director	mlandman@torahday.org	Case manager for strategic, individual learning needs
Leslee Morris	Admissions Director and Office Manager	lmorris@torahday.org	Student recruitment, front office manager, assistant to Head of School
Rabbi Oratz	MS boys Mashgiach	toratz@torahday.org	Interacts with middle school boys giving chizuk and advice
Constance Ozimek	Administrative Assistant	cozimek@torahday.org	Front desk greeter. Assists parents, students & teachers.
Kaci Palmore	Development Coordinator	kpalmore@torahday.org	Development support and database manager
Linda Rabinowitz	Academic Dean	lrabinowitz@torahday.org	Accreditation quality control, Government funded programs, scheduling, and curriculum needs.
Rabbi Elchanan Schulgasser	Senior Development Director	eschulgasser@torahday.org	Fundraising
Michael Toddings	CFO	mtoddings@torahday.org	Accounting, tuition, analytics, insurance, banking & audit

Shalhevet High School LA – Small <300



1. Reporting lines are indicated clearly

- a. Bold Lines indicate direct supervision
- b. Broken lines indicate oversight but not supervision

2. Titles

- a. Sarah Emerson – Chief Operating Officer
- b. Daniel Weslow - Principal
- c. Jonny Ravanshanas – Dean of Student Life
- d. David Block – Asst Principal Judaic Studies
- e. Ari Schwarzberg – Dean of Students
- f. Aviva Walls – Dean of Academic Life
- g. William Walton – Director of Curriculum/Instruction (General Studies)
- h. David Stein – Director of Judaic Curriculum (Judaic Studies)
- i. Ashley Evins – Director of Student Support
- j. Atara Segal – Mashgicha Ruchanit & Admin Team
- k. Naamit Nagel – Just Community
- l. Mickey Rabinov – Hebrew Dept Chair
- m. Ilana Wilner – Director of Student Activities
- n. Cheryl Wolf – Director of Development
- o. Natalie Weiss – Director of Admission
- p. Ryan Coleman – Athletic Supervisor