

This is the CBD profile for two Heavenly-Candy Sourfuls. It shows there are 67.9 mg CBD in two Sourfuls which is about 34 mg CBD per Sourful. In a pack of 7, there is an average of 238 mg CBD.



## CERTIFICATE OF ANALYSIS

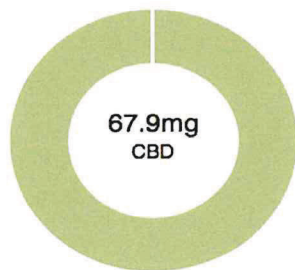
prepared for: HEAVENLY CANDY

165 Primrose Ct Suite B  
Longmont, CO 80301

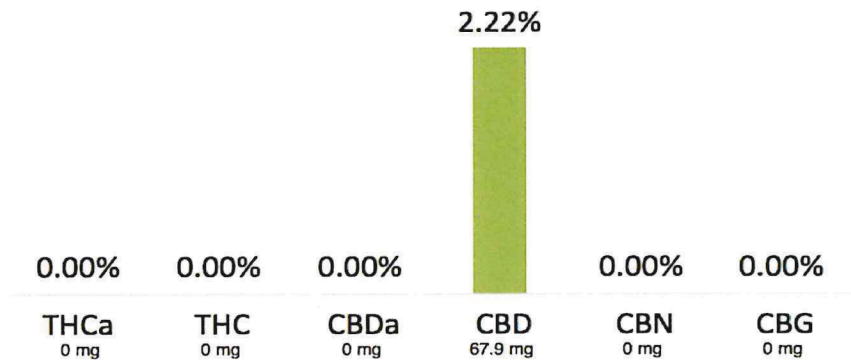
### Sourful HP1

Batch ID: N/A  
Reported: 27-Sep-2018  
Type: Edible  
Test: Potency

### CANNABINOID PROFILE



■ Total Potential THC 0mg \*\*  
■ Total Potential CBD 67.9mg \*\*



\*\* Total Potential THC/CBD is calculated using the following formulas to take into account the loss of a carboxyl group during decarboxylation step.

Total THC = THC + (THCa \* (0.877)) and Total CBD = CBD + (CBDa \* (0.877))

% = % (w/w) = Percent (Weight of Analyte / Weight of Product)

#### NOTES:

Free from visual mold, mildew, and foreign matter.  
# of Servings = 1, Sample/Fill Weight = 3.05385g

### FINAL APPROVAL

Sam Smith  
27-Sep-2018  
4:36 PM

Chris Jungling  
27-Sep-2018  
6:18 PM

PREPARED BY / DATE

APPROVED BY / DATE

Testing results are based solely upon the sample submitted to Botanacor Services, LLC, in the condition it was received. Botanacor Services, LLC warrants that all analytical work is conducted professionally in accordance with all applicable standard laboratory practices using validated methods. Data was generated using an unbroken chain of comparison to NIST traceable Reference Standards and Certified Reference Materials. This report may not be reproduced, except in full, without the written approval of Botanacor Services, LLC.