



skyacoustics

AURA
PANELS
CEILING/WALL

ALUMINUM EDGE ACOUSTICAL PANEL

AURA panels are a metal edge panel system. Aura panels are custom manufactured to your unique design needs and offer total design flexibility from curves, shapes and sizes to meet your vision. Aura panels are available in sizes up to 5' x 10' (1524mm x 3048mm) and thickness up to 2" (50.8mm).

Features

- Extruded aluminum metal edging
- Controlled $\pm 1/8"$ defined joint
- Seamless edge profile
- Total panel thickness control
- Concealed suspension systems available w/ Torison Springs
- Aura panels can be ceiling or wall mounted
- Four different finishes available (see below)
- Design capabilities include vaulted, s-curve, conical or dome

FINISHES AVAILABLE



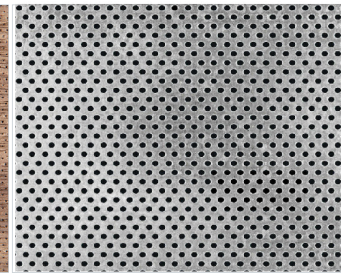
Coated Finish

Coated in a smooth monolithic fine texture finish, available in standard Aura White or any custom color match



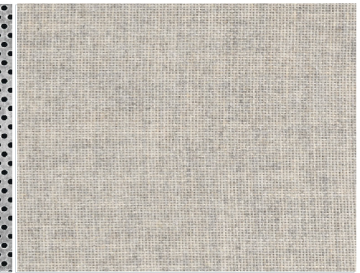
Legno (Premium Finish)

Wood veneer finish available in micro-perforation and non perforated options. Many species and stain options available.



Loha (Premium Finish)

Metal finish available with custom perforations OR without perforations for maximum reflection.



Fabric

Many fabrics, vinyls and felt available from Guilford of Maine, FilzFelt, Knoll, DesignTex, Maharam, Carnegie, Omnova and many more.



www.sky-acoustics.com

55 Bradwick Dr, Concord, ON L4K 1K5

Phone: (647) 477-2200

Email: sales@sky-acoustics.com



GENERAL DATA

- Clear Vapor Retarder installed on back of panel (recommended for ceiling panels to avoid any dust or debris, optional for wall panels)
- Noise Reduction Coefficient (NRC) as per ASTM C423 Standard
- Fire Performance Class A when tested to ASTM E84
- Extruded aluminum metal along the sides with mitered cut joint for corners
- 1" minimum overlap on the back side of the panel for fabric wrapped panels
- 90% Light reflectance with Aura White Coated Finish when tested to ASTM E 1477-98a

TECHNICAL DATA

FINISH	THICKNESS	FIRE RATING	NRC	CAC	CORE DENSITY	LEED	WARRANTY
COATED	1-1/16" (27mm)	CLASS - A	0.90	>35	6-7 PCF	v4	2 YEARS
FABRIC	1-1/16" (27mm)	CLASS - A	UP TO 0.90	>35+	6-7 PCF	v4	2 YEARS
LEGNO	1-1/16" (27mm)	CLASS - A	UP TO 0.90	>35++	6-7 PCF	v4	2 YEARS
LOHA	1-1/16" (27 mm)	CLASS - A	UP TO 0.90	>35+++	6-7 PCF	v4	2 YEARS

2-1/16" (52mm) panels have a NRC of up to 1.05

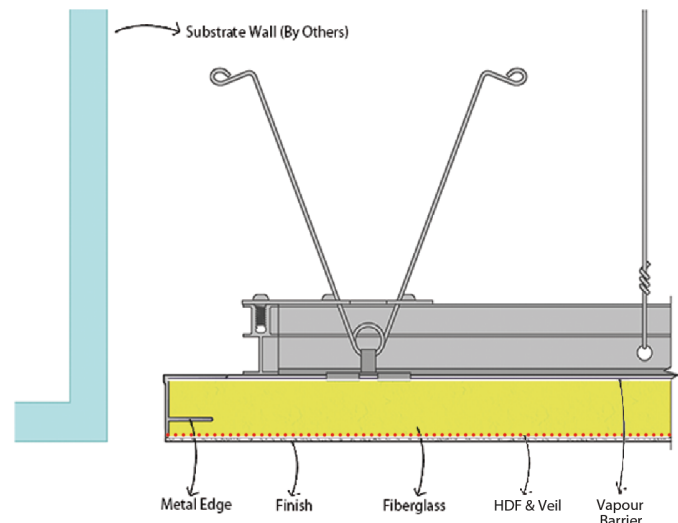
AVAILABLE MOUNTING SYSTEMS

- Aptus (Ceiling Mount)
- Direct Mount (Ceiling Mount)
- Direct Suspended (Ceiling Mount)
- Suspended Reveal (Ceiling Mount)
- Suspended Access Reveal (Ceiling Mount)
- Span (Ceiling Mount)
- Mechanical Z-Clips with Wall Brackets/Z-Track (Wall Mount)

TECHNICAL DRAWING

Aura panel with custom Aptus grid system

Typical perimeter panel detail showing Sky Acoustics Aura panel with custom Aptus suspension grid



www.sky-acoustics.com

55 Bradwick Dr, Concord, ON L4K 1K5

Phone: (647) 477-2200

Email: sales@sky-acoustics.com