



**SO DECO**

The solution that **decorates** your spaces!

**CLIPSO<sup>®</sup>**  
**so different**



# Creating a Custom Print

## 1. Choose A Covering

<b>705 S</b>	Standard	<b>705 A</b>	Standard Acoustic	<b>495 D</b>	Acoustic	<b>495 AC</b>	Acoustic Color
<b>307 T</b>	Translucent (30%)	<b>308 T</b>	Translucent (50%)	<b>309 T</b>	Translucent (70%)	<b>495 AT</b>	Acoustic Translucent

## 2. Choose An Image

Images can be:

- Selected from the many galleries on our website, [www.clipso.com](http://www.clipso.com)
- Selected from additional images found at the French Union of National Images, [www.photo.mn.fr](http://www.photo.mn.fr)
- Downloaded from [shutterstock.com](http://shutterstock.com) (or similar)
- Supplied by customer

### CLIPSO® Digital Image Format Requirements

<b>File Formats:</b>	.TIF for photographic and fine art image files. .EPS for solid color and vector-based files. Files should always be uncompressed.
<b>Color Mode:</b>	CMYK- RGB is not accepted.
<b>Resolution:</b>	Minimum 150 DPI or 250 PPI at full size.
<b>Size and Proportion:</b>	The image file must be scalable to full printing size. The width and height proportions will be locked during up-sizing. The image size must also include approximately two extra inches on each side, beyond the field measurements, to allow for the fabric to be tucked into the profile. You may print up to 16' wide by 150' long without seams, or larger by marrying up the prints during installation.

Files submitted for digital printing must be 'print ready.' It is important that customers ensure that files meet the CLIPSO Digital Image Format Requirements above. This means the file type, formatting, size, DPI/PPI and color mode of the image file submitted will match exactly with the file used in the printing process.

CLIPSO Americas is not responsible for printing errors that are derived from any inaccuracies in the 'print ready' file. If needed, the CLIPSO Design Team can assist with image modifications and digitization for a nominal fee.

*\*It is the customer's responsibility to obtain any licensing and/or copyright permission from the copyright holder for any images submitted to CLIPSO. CLIPSO takes no responsibility in verifying image copyright permissions for those images supplied by the customer.*

## 3. Order Your Print

### - Fill out the form

The Print Project Submission Form can be found on the CLIPSO website at [www.clipso.com](http://www.clipso.com). Once completed, return the form to [contactusa@clipso.com](mailto:contactusa@clipso.com).

### - Submit your image files

- Digitally
- Media Storage Device Mail-In: CLIPSO Americas, Inc. 200 Corporate Drive, Unit 4, Blauvelt, NY 10913

### - Quote/Signed Approval

Once the print-ready image file and Print Project Submission Form are submitted, CLIPSO Americas generates a quote for the final order and sends it to the customer. The quote must be signed and returned to CLIPSO Americas, via email, to [contactusa@clipso.com](mailto:contactusa@clipso.com).

## 4. Strike-Offs

A strike-off is a sample of what the final printed image will look like on the chosen fabric. They help the customer see exactly how the final printed product will appear on the selected fabric. The size of the strike-off is 2' by 2' and will be printed to scale (100% of final image). Only a small portion of the final full image will be printed. The customer may specify a sample area that they would like to see printed on the strike-off. It is recommended that the most critical or detailed area be test printed. Larger strike-offs, incurring additional costs, are available upon request.

A strike-off will not be produced without the customer's written approval of the project quote. The lead time to produce a strike-off is 5 to 7 business days from the time a print-ready image file and Print Project Submission Form are received (does not include transit time). One strike-off and standard shipping is included in the total order price. After receiving and reviewing the strike-off, the customer must email approval of the strike-off to [contactusa@clipso.com](mailto:contactusa@clipso.com).

## 5. Final Image

The final print will be available for shipping approximately 7-10 days after final strike-off approval from the customer is received.



# SO DECO Customized for you

Discover what inspires you!

Thanks to SO™ DECO by CLIPSO®, your interior surfaces can be adorned with a wide array of images and designs. Choose from the SO DECO Gallery Collections available on our website, choose from an online stock photo agency such as Shutterstock or Getty Images, or use your own photo, artwork or custom design... and bring your projects to life!

Go to [www.clipso.com](http://www.clipso.com) to discover what inspires you.

## SO DECO Gallery Collections



Museum Gallery



Gallery of Artists



Photo Gallery



Design Collections

## Online Stock Photo Agencies



Shutterstock



Corporate Showroom - Lancaster, PA  
Installer: Unique Construction

## Your Photo or Custom Image



The CLIPSO Design Team can assist with image modification and digitization, as needed.



Your original photo.

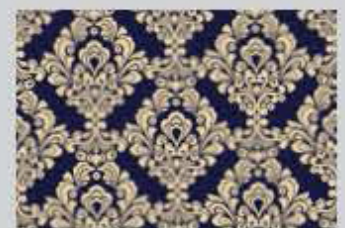


Your custom wall.



Restaurant - Boston, MA - Installer: ML McDonald Company - Rep: Hamilton Associates

From a simple piece of wallpaper to a luxurious, large-scale print, the CLIPSO Design Team can help make your vision a reality.



Extract from a modified pre-existing wallpaper pattern.



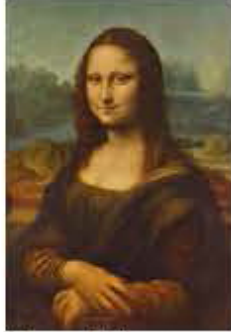
# SO DECO Gallery Collections

Bring the history of art to your interiors with the Museum Gallery collection

Thanks to its partnerships with the French National Museums, CLIPSO® grants you the opportunity to put Vincent Van Gogh on your dining room ceiling or Edgar Degas on your bedroom wall. Peruse our online Museum Gallery to create rooms that inspire you!

To view the complete collection, visit [www.photo.rmn.fr](http://www.photo.rmn.fr).

## Museum Gallery



Museum Gallery -  
The Mona Lisa



Museum Gallery - Grande Odalisque



Brasserie Le France - LaValette du Var, France - Installer: Epal Design - PM: Emmanuel Palumbo



# SO DECO Gallery Collections

Complete and customizable services

Take your interior design one step further than traditional paint or wallpaper with original and customizable works of art. Create a world of wonder all around you with SO™ DECO printed interiors by CLIPSO®. It's the haute couture of interior design!

For more information, or to view all of our galleries, visit [www.clipso.com](http://www.clipso.com).

## Gallery of Artists



Peruse our Gallery of Artists to find what inspires you.



## Photo Gallery



Bring a new perspective to your ceilings and walls with special effect graphics in our Photo Gallery collection.



## Design Collections



Stay on trend and in season with the Design Collections gallery of images.



- Completely customizable graphics
- Change colors, as you like
- Change patterns or sizing of patterns, as you like
- All retouching available through our CLIPSO Design Team



Example of changing colors



Restaurant - Miami Beach, FL - Installer: InternationalAcoustics

# SO DECO



Printable



Translucent



Limitless



Colors



Custom Shapes



The CLIPSO® Design Team offers wide-span printing, graphic design support, and a turnkey customization program.



# CLIPSO®

so different

200 Corporate Drive, Unit 4, Blauvelt, New York, 10913 • 646.422.0919 • [contactusa@clipso.com](mailto:contactusa@clipso.com)

© 2019 CLIPSO Americas, Inc. All rights reserved. Photos are not contractual.

[www.clipso.com](http://www.clipso.com)