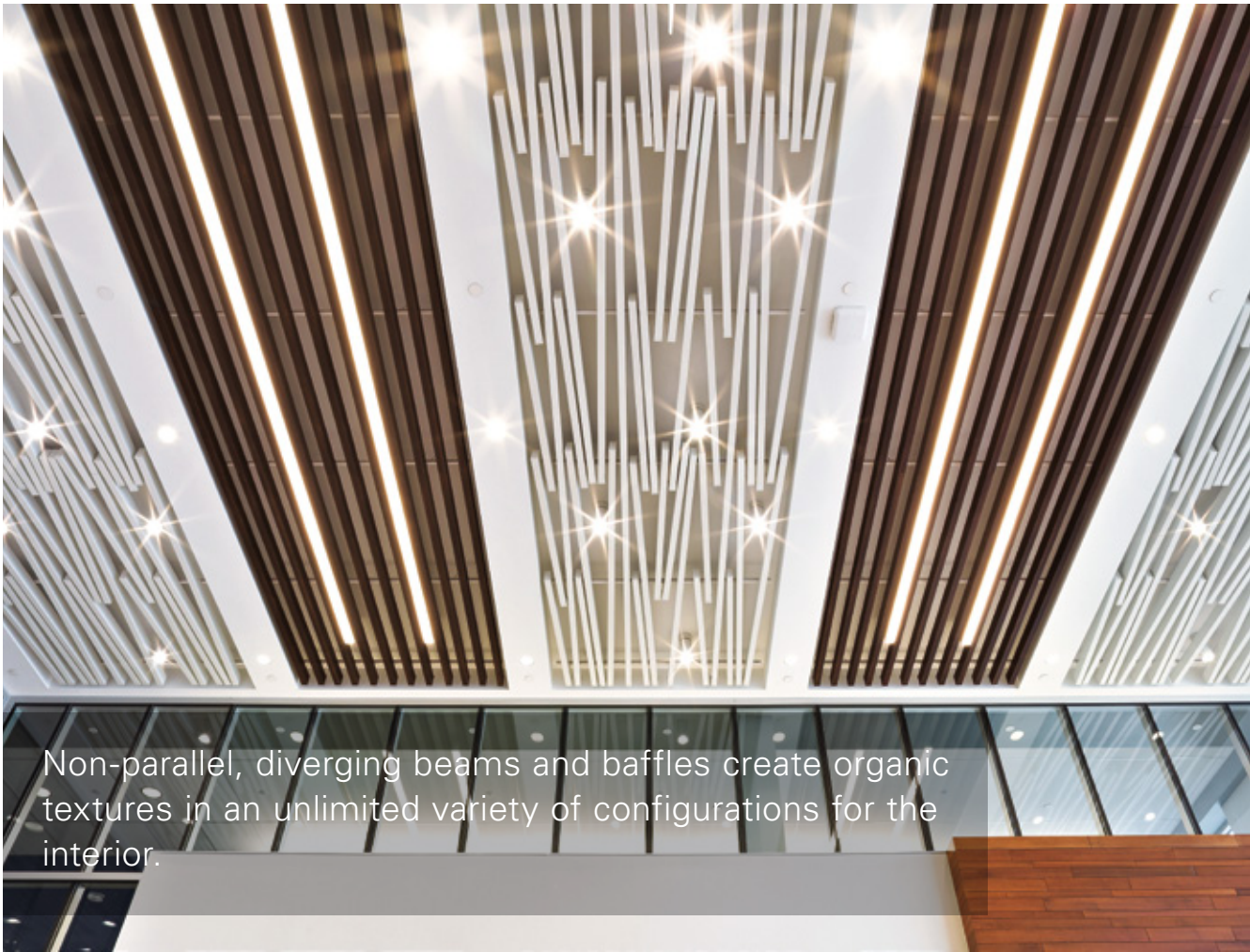


METAL  
CEILINGS

BEAMS & BAFFLES  
**TAVOLA™ DIVERGENT**



Non-parallel, diverging beams and baffles create organic textures in an unlimited variety of configurations for the interior.

Project: National Interstate Insurance Company Headquarters, Richfield, OH; Tavola™ Divergent Photo credit: Studio 66 LLC

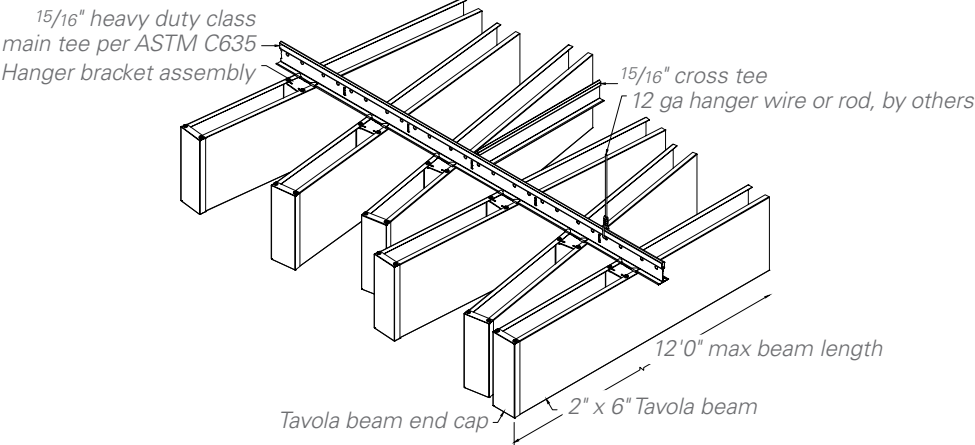
**KEY FEATURES**

- Use twist clips to create motion
- Multitude of profile dimensions up to 12' long
- Perforation patterns provide elevated acoustics
- Standard heavy-duty 15/16" T-grid suspension
- Waste reduction with factory fabricated dimensional material
- Downweight: reduce dead load with lightweight aluminum
- Compatible with industry standard lighting, HVAC, speaker, fire safety, and security services

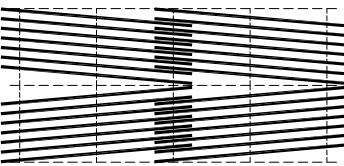
**TAVOLA™ DIVERGENT**

**TYPICAL ISOMETRICS**

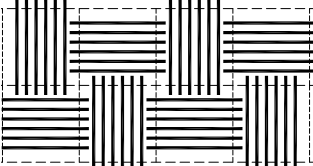
Pattern shown for illustrative purposes only. Pattern must be specified, see website for additional sizes.



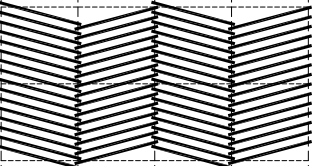
**CONFIGURATIONS**



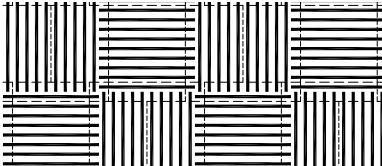
V-pattern



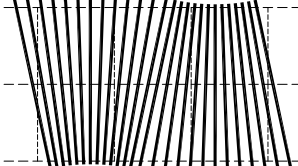
Pinwheel



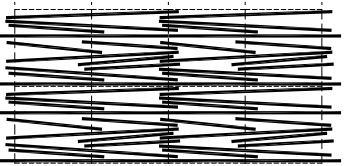
Chevron



Basket weave



Fan



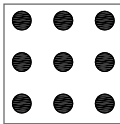
Random alpha

**PERFORATION PATTERNS**

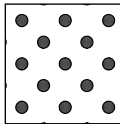
Standard patterns shown. Perforations not available on real wood veneer. Scale shown: 1:1, unless otherwise noted.



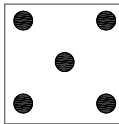
Non-perforated



Pattern #106



Pattern #115



Pattern #119

**PHYSICAL DATA**

**Substrate:** Aluminum  
**Warranty:** 1 year  
**Seismic rating:** Zones A,B,C,D,E,F  
**Fire rating:** Class A Fire Rated per ASTM E84  
– Painted or anodized metal: Flame spread: ≤ 25, Smoke ≤ 50  
– Wood veneer on metal: Flame spread: ≤ 25, Smoke ≤ 55 (for interior applications)  
**Weight:** Varies 0.5 – 2.1 lbs./sq.ft.  
**Wind load:** N/A  
**Recycled content:** Up to 85%  
**Light reflectance (LR) Coefficient per ASTM E1264 & ASTM E1477:**  
– Varies with finish  
– Cotton White: LR = 0.81  
**Acoustical ratings – NRC:** See Resources section.

**BIM**

REVIT files available for BIM contributions, see website for details.

**LEED V4 CREDITS**

**MR:** Building Product Disclosure  
**EQ:** Low-Emitting Materials  
**EQ:** Indoor Air Quality Assessment  
**EQ:** Acoustic Performance

**CERTIFICATIONS**

GREENGUARD Gold Certified  
FSC chain of custody veneers available  
EPDs – available upon request

COLORS & FINISHES

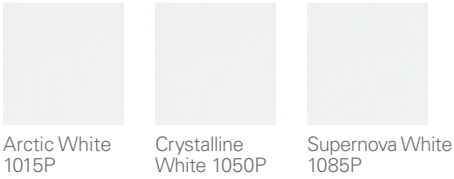
A wide choice of colors and finishes are available and some carry a premium price over manufacturer’s standard colors. Custom color matching is available upon request. Minimum quantities and lead times may apply. See website for the most up to date information and to order samples. Colors are for illustration purposes only.

STANDARD PAINT COLORS



WHITE FINISH OPTIONS

Powder-coat paint finish for Arctic White #1015P (Gloss 10-20); Crystalline White #1050P (Gloss 45-55); Supernova White #1085P (Gloss 80-90)



BLACK FINISH OPTIONS

Powder-coat paint finish for Starless Black #5000P (Matte); Raven Black #5030P (Gloss 25-35); Sable Black #5060P (Gloss 65-75); Wet Glass Black #5095P (Gloss 90-95)



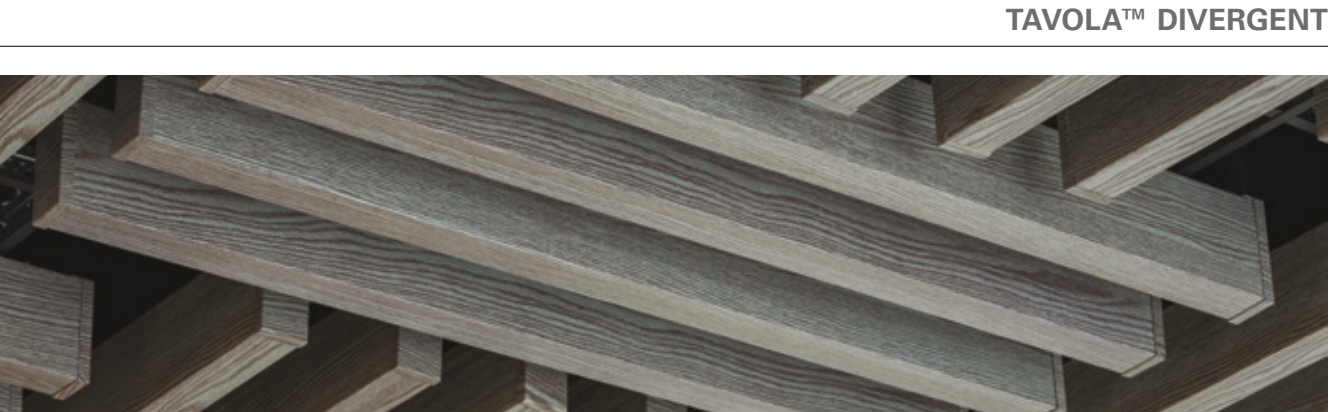
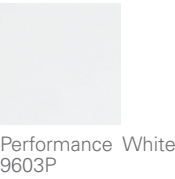
CUSTOM COLORS

Premium custom colors.



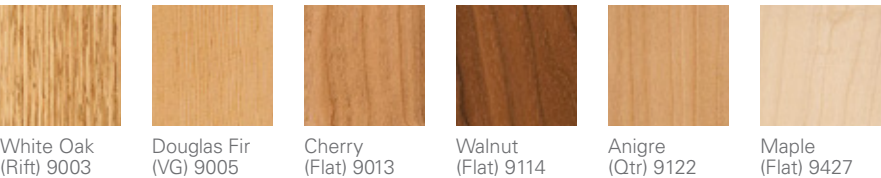
DAYLIGHTING WHITE PAINT FINISH

Powder-coat paint finish offering LRV 96; non-glare, 3% low gloss finish. Certified by: Applied Technical Services, Inc. Test Report No. D233185. Test reports available by request.



STANDARD WOOD VENEER OPTIONS

Real wood veneer (interior only). Formaldehyde-free, Class A composite panel. Non-perforated only. Note: This is a small subset of veneers available. Please contact manufacturer for client-specific species and stains.



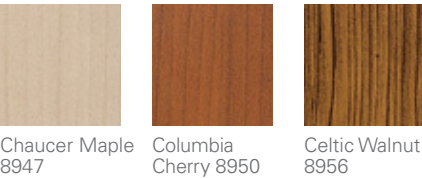
DECORATED WOOD-LOOK OPTIONS

Powder-coat paint finish (interior and exterior). Formaldehyde-free, Class A composite panel. This finish is recommended for exterior conditions.



COIL-COATED WOOD-LOOK OPTIONS

Polyester coil-coated painted finish (interior and exterior). Formaldehyde-free, Class A composite panel. Minimums apply.



LAMINATED (FILM) WOOD FINISHES

Film (interior only). Formaldehyde-free, Class A composite panel. Minimums apply.

