

HARSUKH

RESIDENCIES



A Project By

ALMAYMAR

WHERE PEACE RESIDES



THE HARSUKH WAY OF LIFE

EVERY MOMENT DESIGNED AROUND YOU

Harsukh Residencies is where modern living meets mountain serenity. Crafted with refined architecture and international-standard amenities, it offers a lifestyle of quiet luxury. Designed for those who value beauty, balance, and space to breathe. Contemporary Living, Naturally Elevated

ABOUT HARSUKH

Property Type

Luxury Vertical Residences

Type Of Apartments

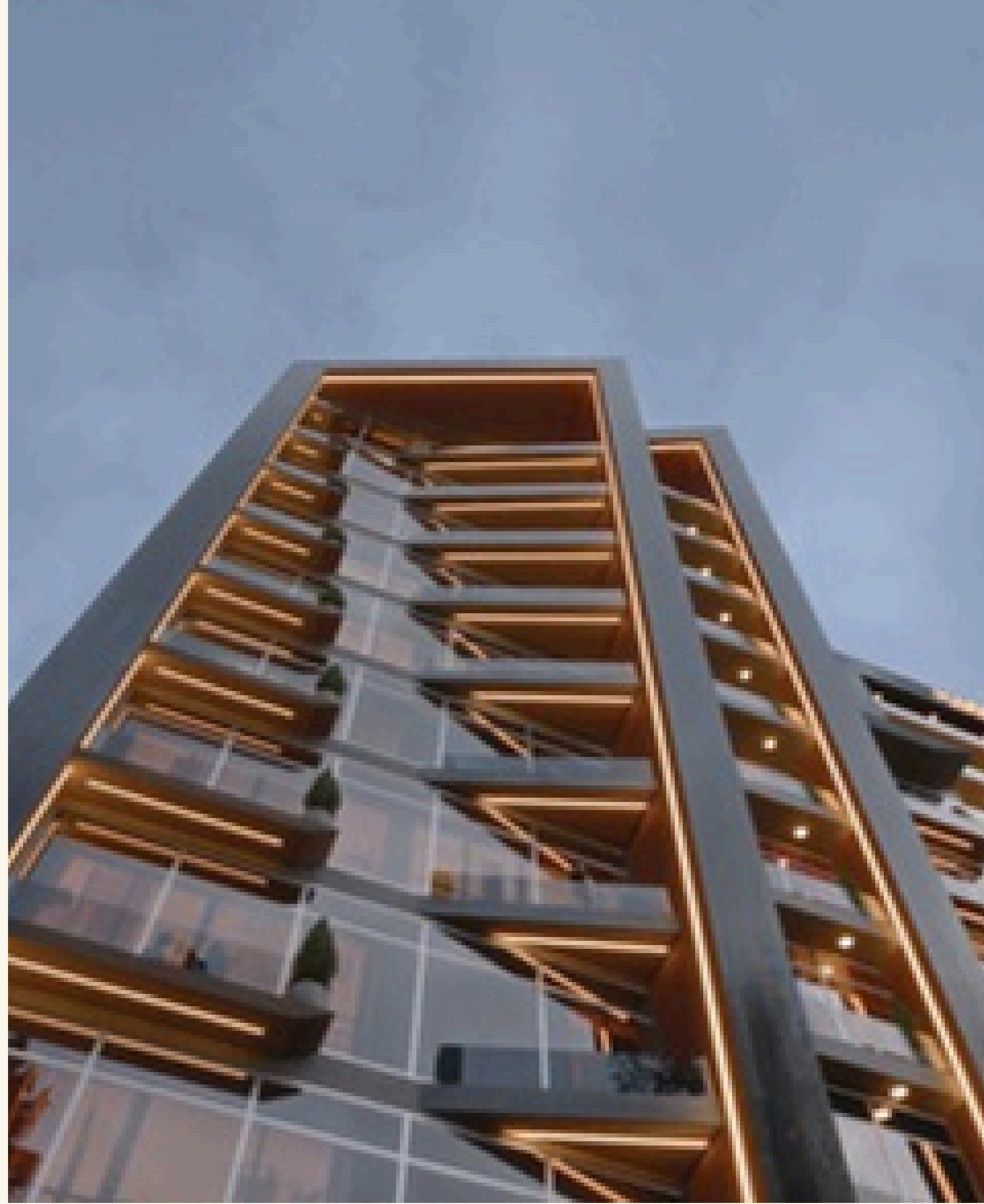
Signature Penthouses

Three-Bedroom Apartments

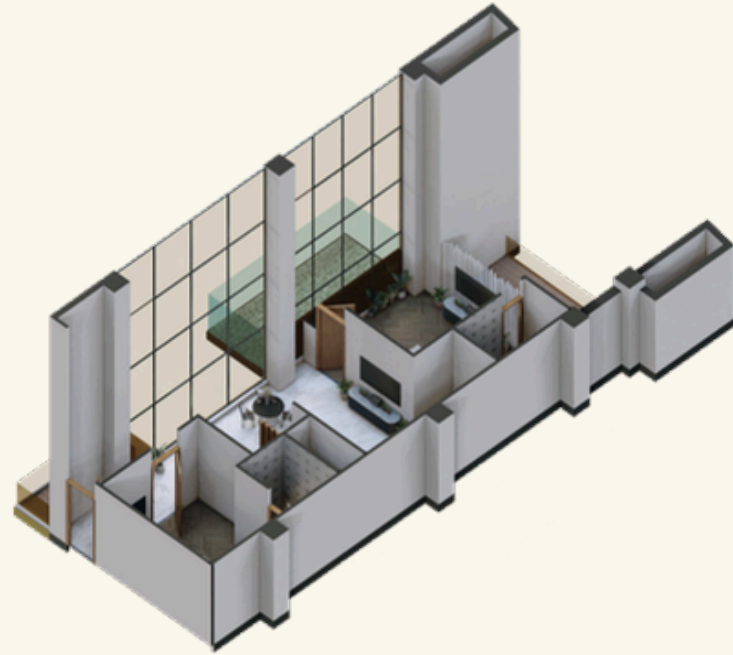
Two-Bedroom Apartments

One-Bedroom Apartments

Studio Apartments



TYPE OF UNITS



Penthouse



Three Bed Apartment



Two Bed Apartment



One Bed Apartment




Studio Apartment


LOCATION



07 mins
Ayubia Chairlift


08 mins
Mushkpuri Track


10 mins
Nathigali Bazar


50 mins
Abbottabad


60 mins
Umbrella Waterfall


65 mins
Faisal Mosque





HARSUKH

3rd FLOOR —

2nd FLOOR —

1st FLOOR —

G FLOOR —

V1 FLOOR —

V2 FLOOR —

V3 FLOOR —

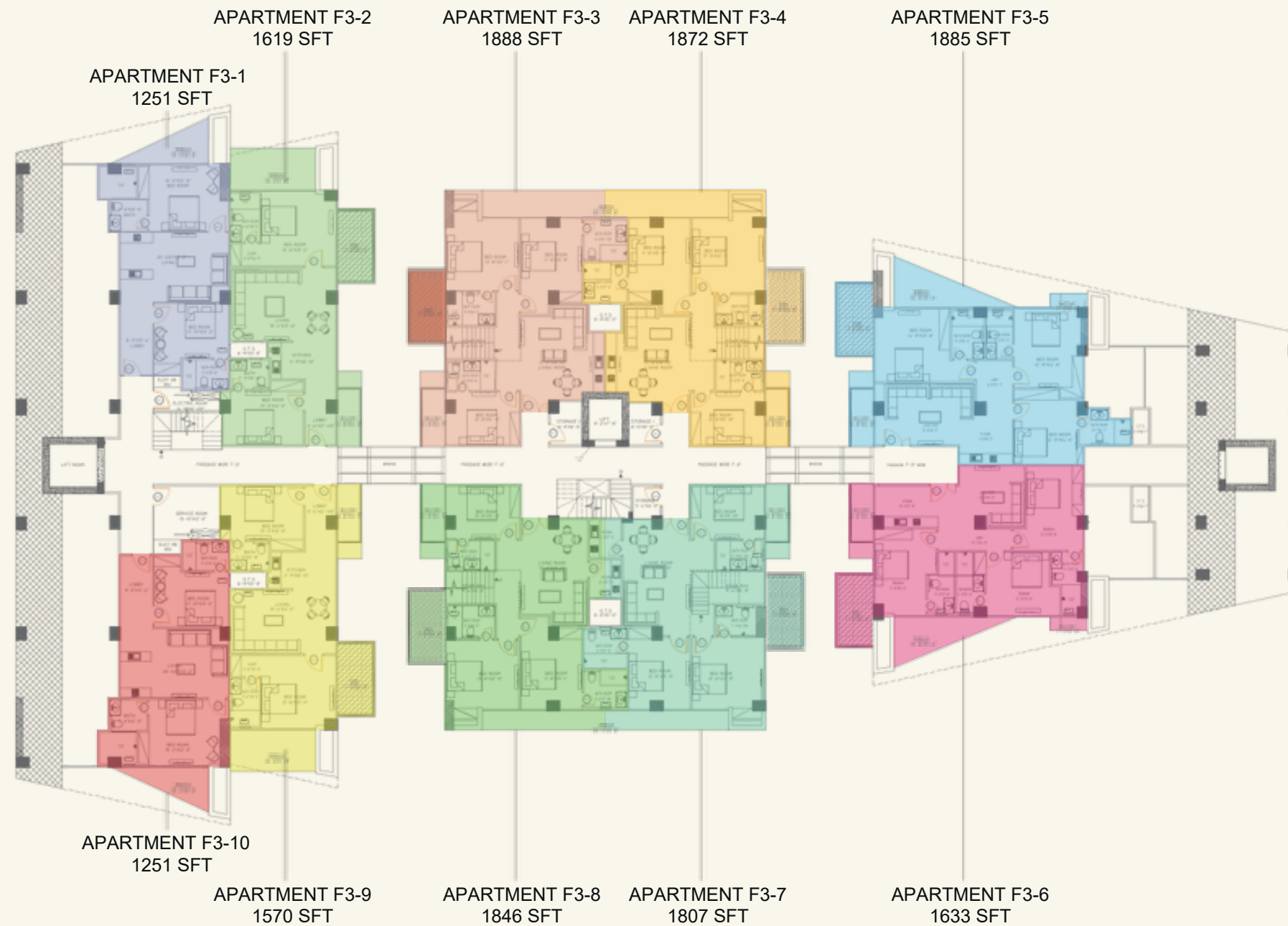
V4 FLOOR —

V5 FLOOR —

V6 FLOOR —

HARSUKH'S FLOOR & PAYMENT PLAN

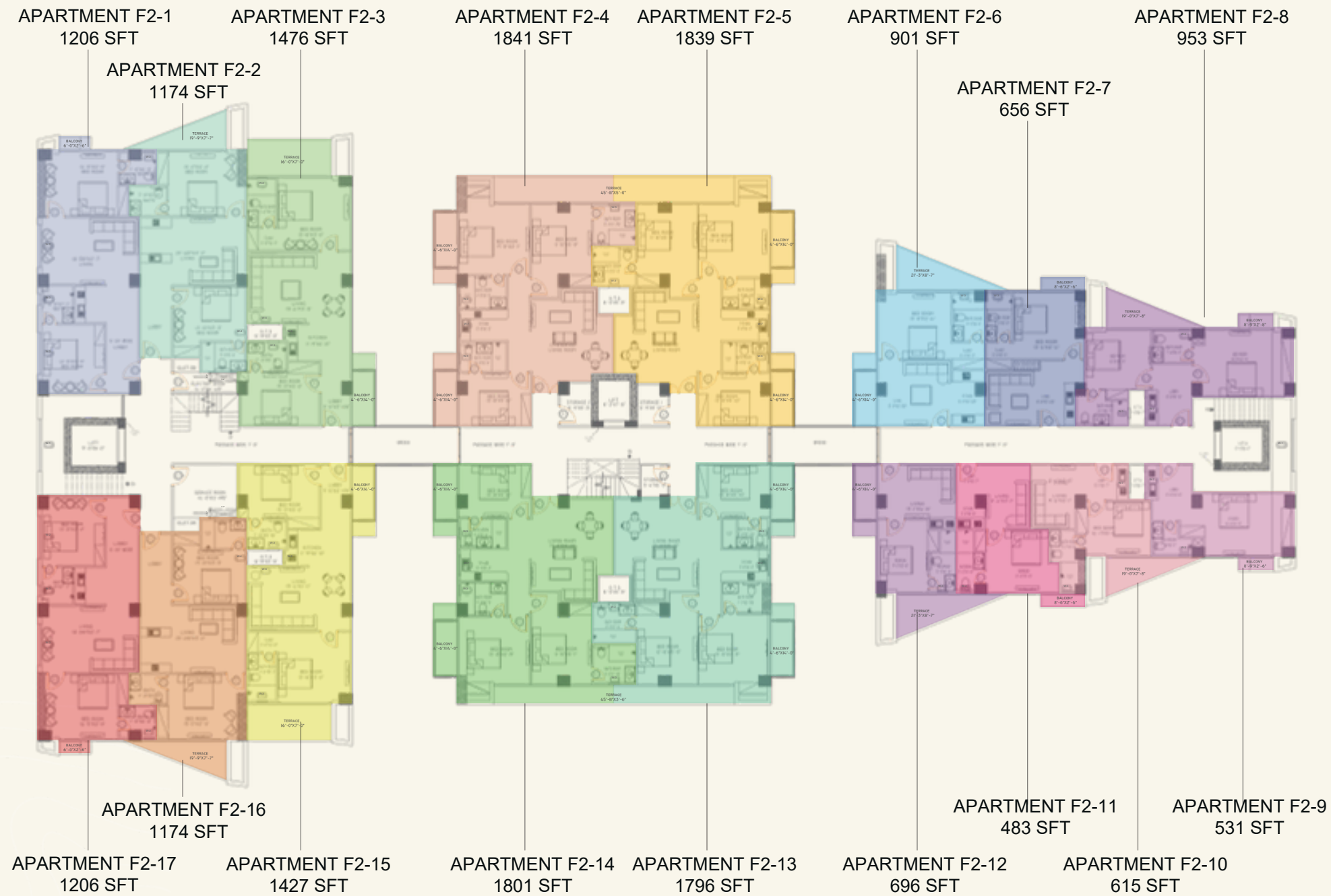
3RD FLOOR



- **HARSUKH RESIDENCES** Includes **TEN(10)** penthouses
 - **Eight (8)** penthouses with outdoor balconies featuring floating thermal sky pools designed for year-round use
 - **Two (2)** penthouses with in-unit Jacuzzi® (whirlpoolhottub) for two persons.
- The penthouse offers an 18-foot high double-height structure with full-height walls, a panoramic glass roof providing unobstructed views, and is delivered fully furnished to luxury standards.

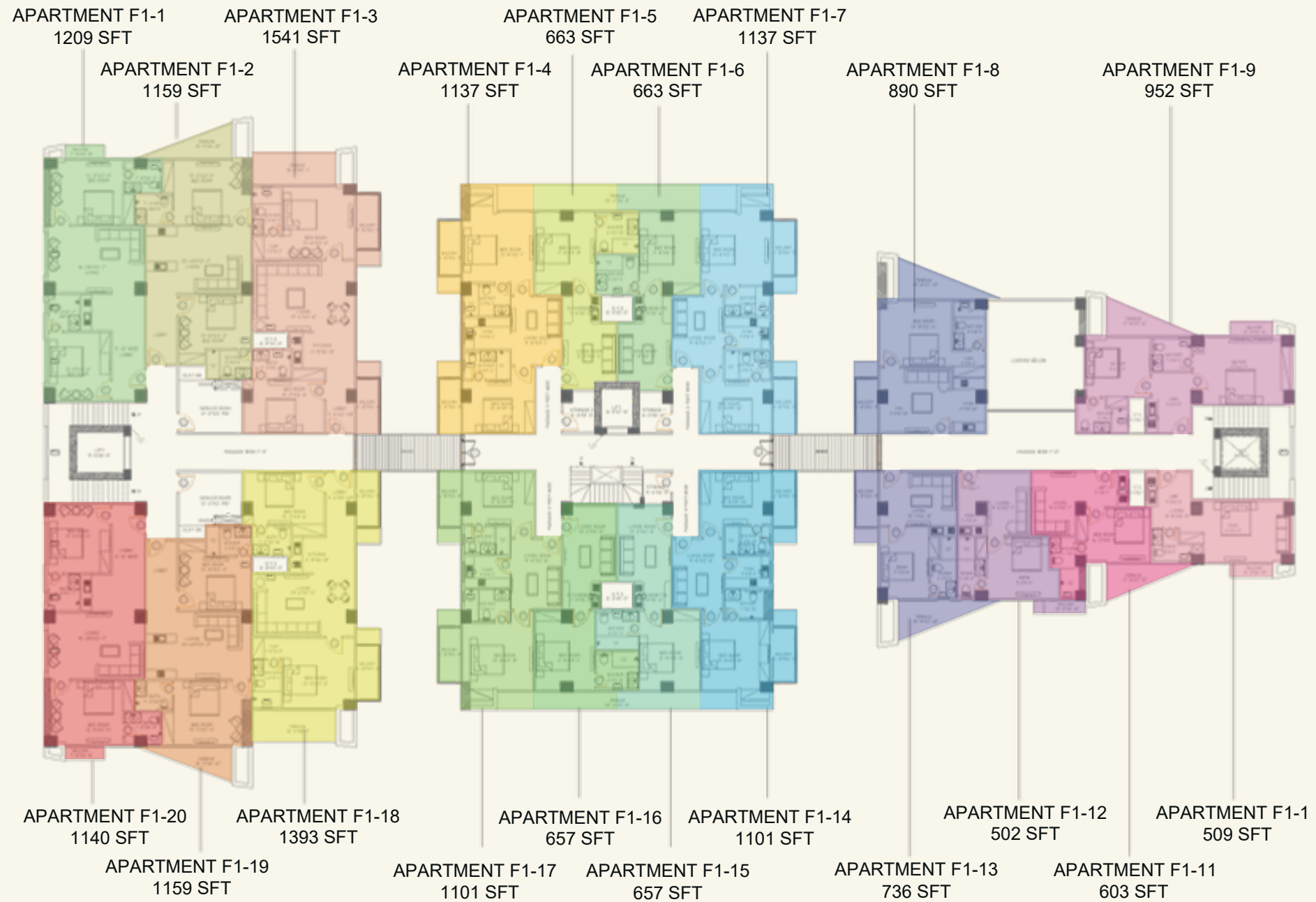
2ND FLOOR

- TOTAL APARTMENTS :
- ONE BED :6
- TWO BED :7
- THREE BED :4



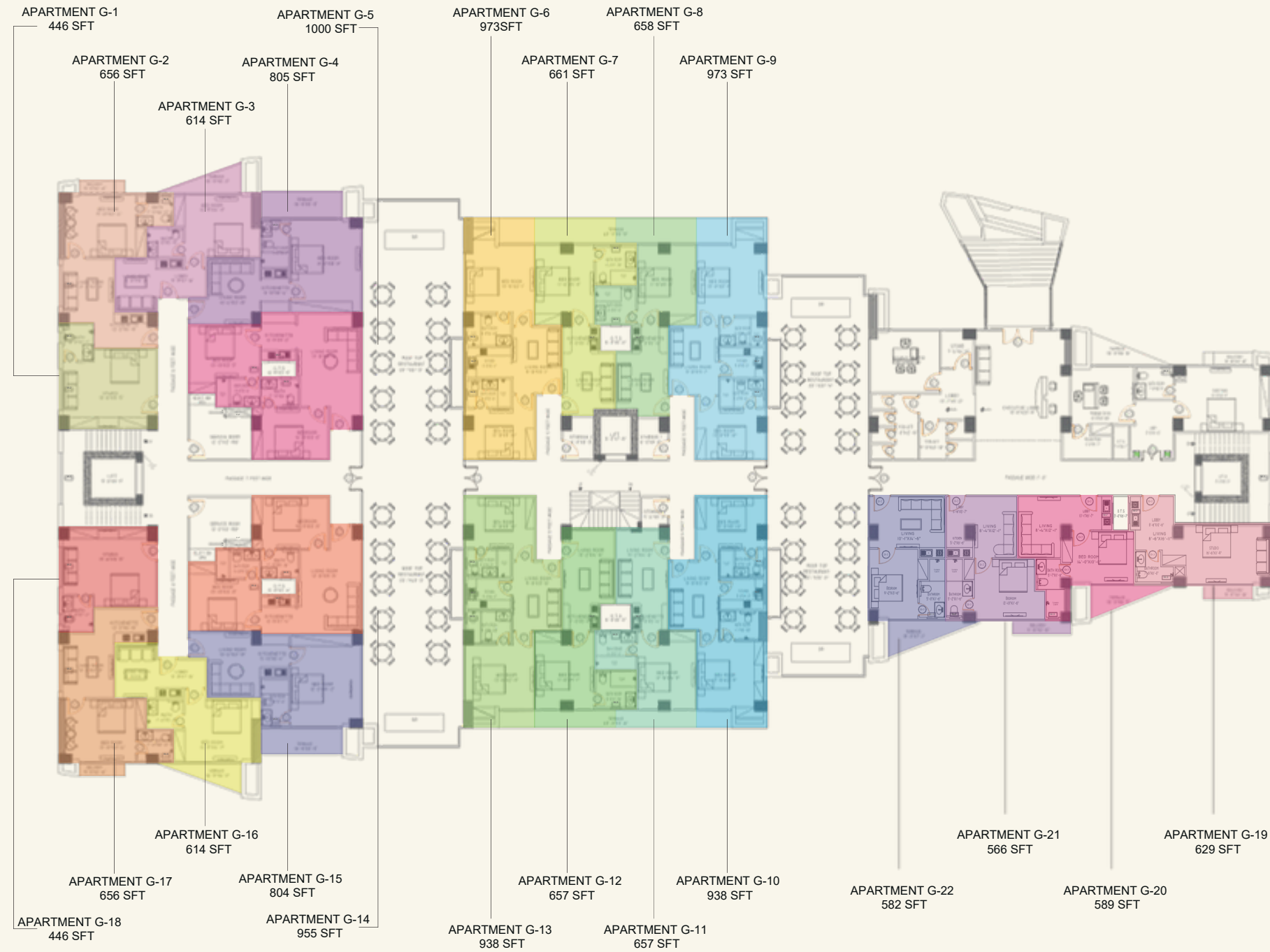
1ST FLOOR

- TOTAL APARTMENTS : 20
- ONE BED : 9
- TWO BED : 11



GROUND FLOOR

- **TOTAL APARTMENTS : 22**
- **STUDIO : 2**
- **ONE BED : 14**
- **TWO BED : 16**
- **Ground Floor Grand Reception & Lobby**



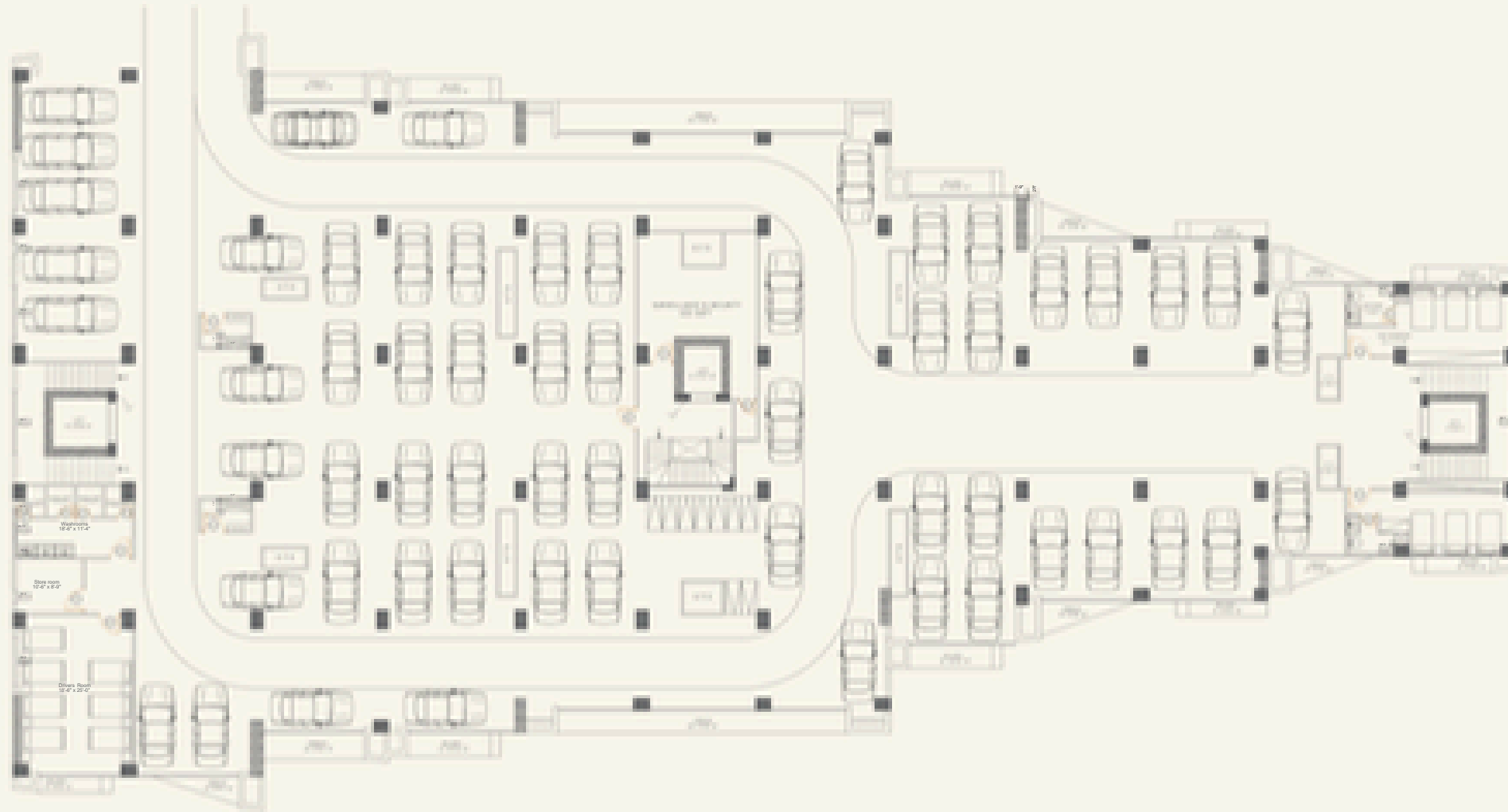
VALLEY FLOOR 01

- TOTAL 35
- APARTMENTS :
- STUDIO : 6
- ONE BED : 28
- TWO BED : 1



VALLEY FLOOR 02

- The VALLEY-2 Floor comprises designated car parking facilities along with dedicated rooms for drivers, planned to ensure convenience, security, and organized residential support services



VALLEY FLOOR 03

- TOTAL APARTMENTS :
- STUDIO : 7
- ONE BED : 30



VALLEY FLOOR 04

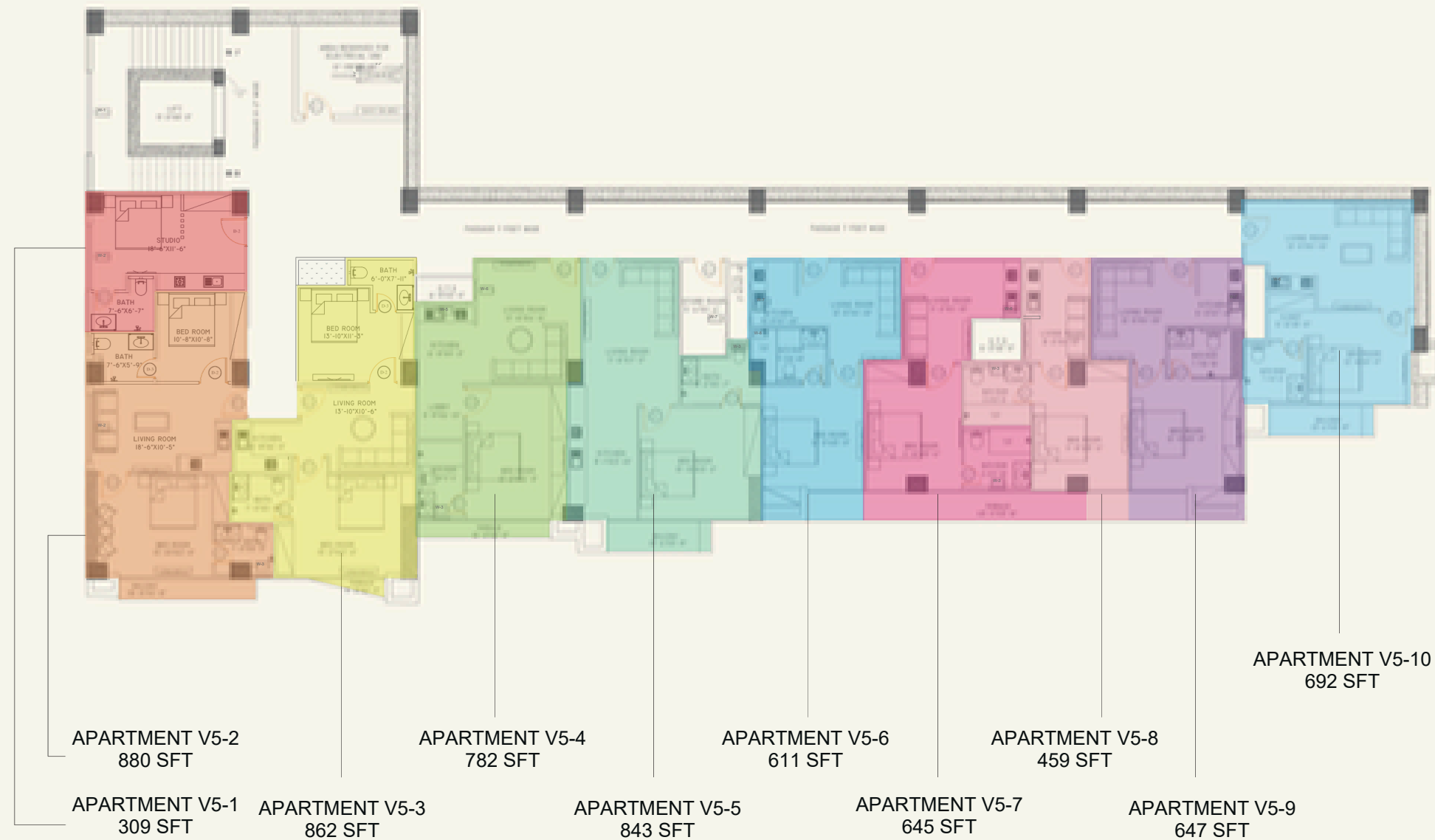


- **TOTAL APARTMENTS : 17**
- **STUDIO : 3**
- **ONE BED : 14**
- **Wellness & Leisure Amenities Zone**
- **Swimming Pool, Sauna, Spa, Massage Rooms, Salon & Changing Facilities**



VALLEY FLOOR 05

- TOTAL APARTMENTS :
- ONE BED : 7
- TWO BED : 2
- STUDIO : 1



VALLEY FLOOR 06

- Valley Floor-6 is dedicated to premium lifestyle facilities, including a restaurant and a fully equipped gymnasium.



PAYMENT PLAN

| | | | | | | |
|---|---------------------|-------------|---------------------------------|---------------------------|-----------------------|-------------------|
| STUDIO 280 SQ FT TO 454 SQ.FT | RS: 40000 PER SQ.FT | BOOKING 15% | CONFIRMATION 15% WITHIN 60 DAYS | 6 HALF YEARLY INSTALMENTS | 30-MONTHLY INSTALMENT | 20% ON POSSESSION |
| 1 BED 481 SQ.FT TO 890 SQ.FT | RS: 40000 PER SQ.FT | BOOKING 15% | CONFIRMATION 15% WITHIN 60 DAYS | 6 HALF YEARLY INSTALMENTS | 30-MONTHLY INSTALMENT | 20% ON POSSESSION |
| 2 BED 862 SQ.FT TO 1541 SQ.FT | RS: 40000 PER SQ.FT | BOOKING 15% | CONFIRMATION 15% WITHIN 60 DAYS | 6 HALF YEARLY INSTALMENTS | 30-MONTHLY INSTALMENT | 20% ON POSSESSION |
| 2 BED 862 SQ.FT TO 1541 SQ.FT | RS: 40000 PER SQ.FT | BOOKING 15% | CONFIRMATION 15% WITHIN 60 DAYS | 6 HALF YEARLY INSTALMENTS | 30-MONTHLY INSTALMENT | 20% ON POSSESSION |
| 3 BLD 1796 SQ FT TO 1841 SQ.FT | RS: 40000 PER SQ.FT | BOOKING 15% | CONFIRMATION 15% WITHIN 60 DAYS | 6 HALF YEARLY INSTALMENTS | 30-MONTHLY INSTALMENT | 20% ON POSSESSION |
| PENT-HOUSE 2 BED 1251 SQ FT TO 1619 SQ.FT | RS: 50000 PER SQ FT | BOOKING 15% | CONFIRMATION 15% WITHIN 60 DAYS | 6 HALF YEARLY INSTALMENTS | 30-MONTHLY INSTALMENT | 20% ON POSSESSION |
| PENT-HOUSE 3 BED 1633 SQ FT TO 1888 SQ.FT | RS: 50000 PER SQ.FT | BOOKING 15% | CONFIRMATION 15% WITHIN 60 DAYS | 6 HALF YEARLY INSTALMENTS | 30-MONTHLY INSTALMENT | 20% ON POSSESSION |

PAYMENT PLAN VALID UNTIL GREY STRUCTURE COMPLETION-28TH FEBRUARY 2027

PAYMENT PLAN

30 %
DOWN PAYMENT

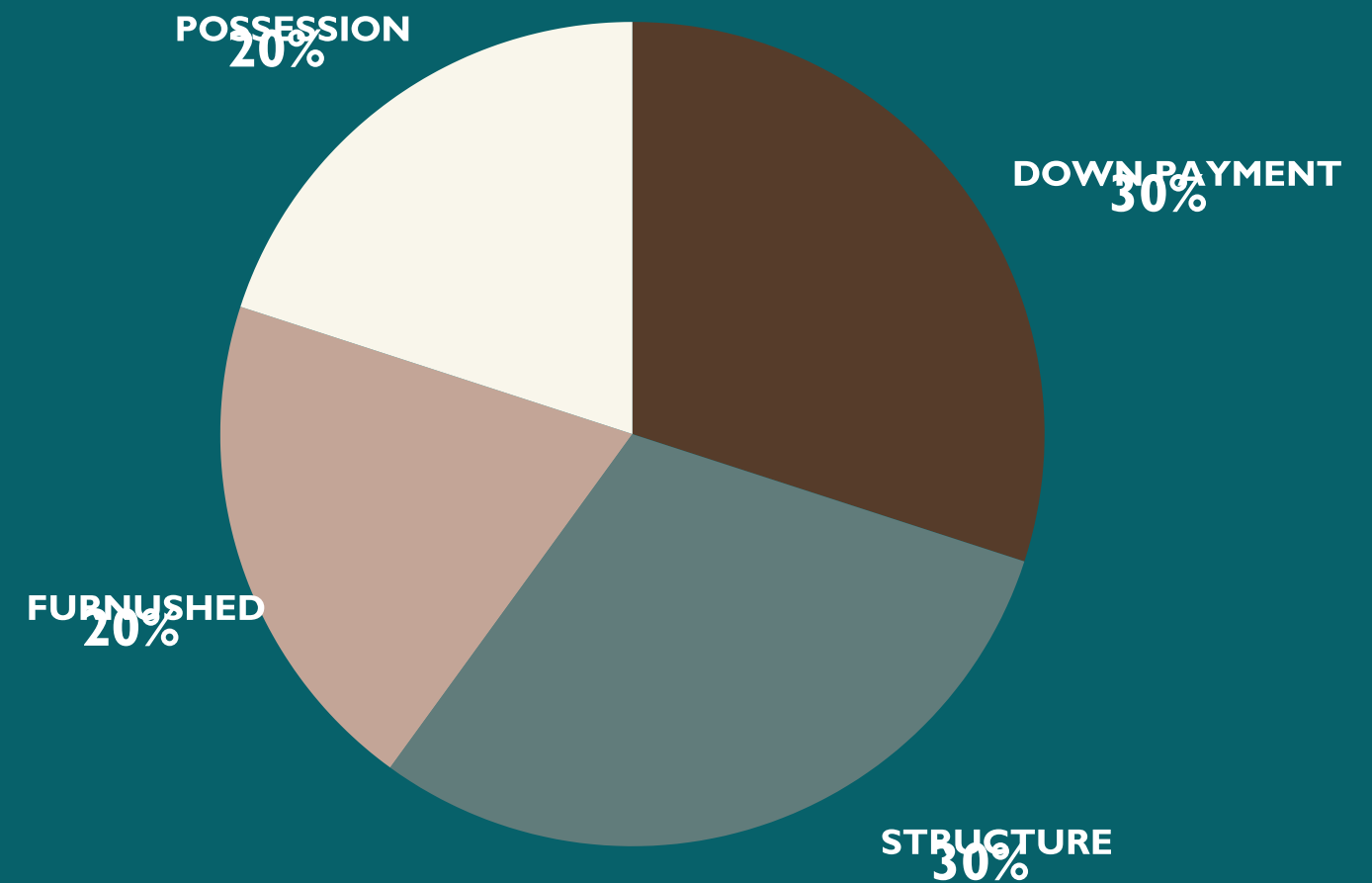
30 %
ON STRUCTURE

20 %
TILL FURNISHED

20 %
ON POSSESSION

30
MONTHLY
INSTALMENTS

06
HALF YEARLY
INSTALMENTS



Terms and Conditions:

- 10% category charges will be applied on special category apartments.
- 10% discount will be applicable on full payment.
- Prices are subject to change at any time without prior notice.
- Confirmation after 30 days of booking.
- Payment should be made through P.O / D.D / Cross cheque in favour of "Harsukh Residencies"

HARSUKH

RESIDENCIES

A Project By

ALMAYMAR

Call Now

051-111-520-520

Booking Office

24-D, 2nd floor, Rashid Plaza,
Main Jinnah Avenue, Blue Area,
G-6/3, Islamabad



www.theharsukh.com

