

# Agenda

Upper San Luis Rey Groundwater Subbasin G.S.A  
Executive Team - Stakeholder Outreach  
Wednesday, March 24, 2021 4:00 P.M.  
34928 Valley Center Road, Pauma Valley, California

**This meeting will be held via Zoom.**

## AGENDA TOPICS

1. **Call to Order**

Introductions

2. **Stakeholder Outreach Presentation**

A. Plan Area Chapter Review

The full Plan Area Chapter Draft can be found at the following link.

<https://geoscience.syncedtool.com/shares/file/cnRyCVrsXFi/>

B. Question & Answer

3. **Adjournment**

Next Stakeholder Outreach Meeting April / May 2021 - Basin Setting (Water Budget)

# Virtual G.S.A Stakeholders Meeting Instructions for March 24, 2021

## **Joining by Internet:**

You have been sent an e-mail invite to the meeting. When you open the invite, you will see the internet link to join the Zoon Meeting.

**Step 1:** Click on the Zoom link in the email invitation that you received. The link should look like this:

### **Stakeholder Meeting**

When

Where <https://us02web.zoom.us/j/87373222621?pwd=Y3Q5dy9FdEx3bjRYUm9JcXVBRUx2QT09> (map)

Who • [carmen@yuimamwd.com](mailto:carmen@yuimamwd.com) - organizer

Join from a PC, Mac, iPad, iPhone or Android device:

Please click this URL to join. <https://us02web.zoom.us/j/87373222621?pwd=Y3Q5dy9FdEx3bjRYUm9JcXVBRUx2QT09>


Passcode

Or iPhone one-tap:

+16699006833,,87373222621#,,,,\*544922# US (San Jose)

+14086380968,,87373222621#,,,,\*544922# US (San Jose)

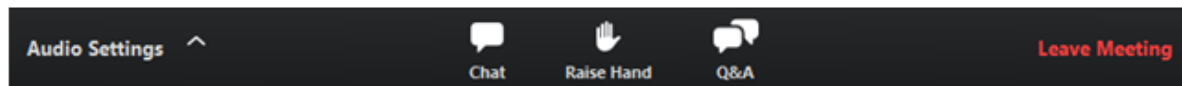
**Step 2:** Click on “Join Meeting” button (see below)



**Step 3:** Enter the Meeting ID number and your display name.

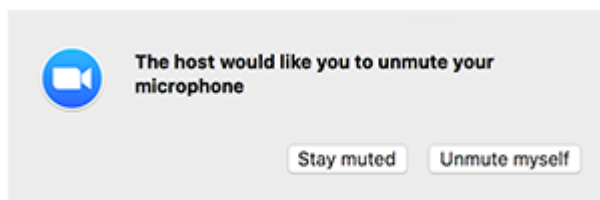
### **Join a Meeting**

## Helpful tips for participating in the meeting:



**Audio Settings** (only visible if the host hasn't granted you permission to talk): Change your audio settings. You can also click the upward arrow (^) next to change your speaker.

**Unmute/Mute:** If the host gives you permission, you can unmute and talk during the webinar. All participants will be able to hear you. If the host allows you to talk, you will receive a notification.



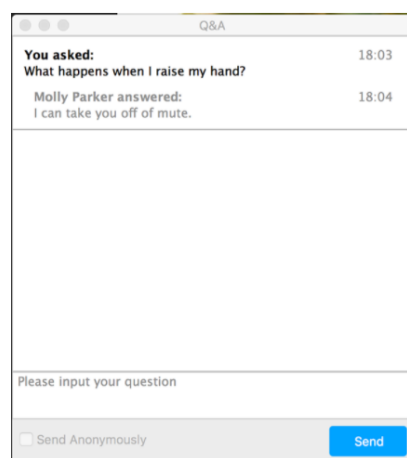
**Chat:** Open in-meeting chat, allowing you to send chat message to and send a message to the host, panelist, and attendees.

**Raise Hand:** Raise your hand in the webinar to indicate that you need something from the host.

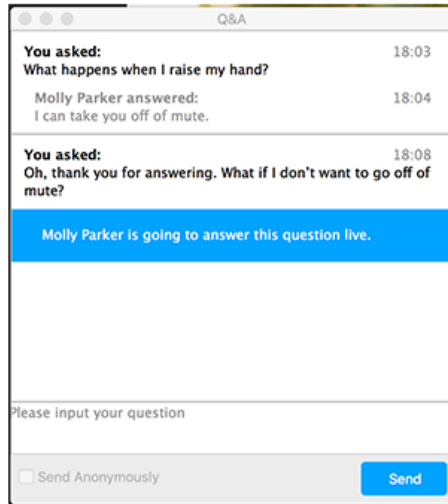
**Question & Answer:** Open the Q&A window, allowing you to ask questions to the host and panelists. They can either reply back to you via text in the Q&A window or answer your question live.

To ask a question:

1. Type your question into the Q&A box. Click Send.
2. If the host replies via the Q&A, you will see a reply in the Q&A Window.

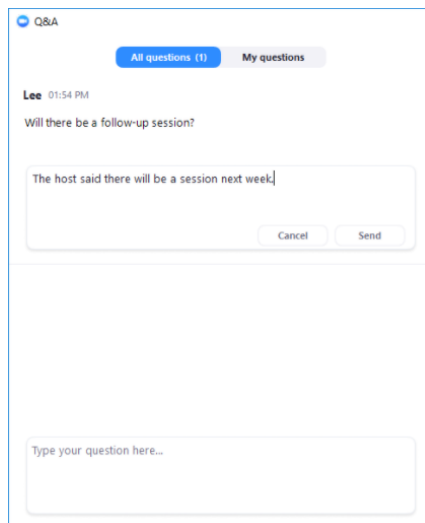


The host can also answer your question live (out loud). You will see a notification in the Q&A window if the host plans to do this.

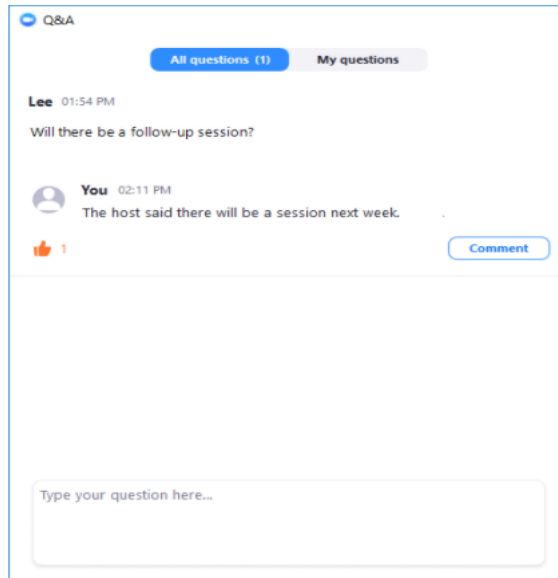


As an attendee you can also like or comment on the other attendee's questions. This helps the host or participant identify popular questions, especially in a webinar with many attendees.

1. Click Comment to write a reply to an existing question.



2. Type your comment and click Send. Your comment will appear beneath the question.



**Leave meeting:** Click leave meeting to leave the webinar at any time. If you leave, you can rejoin if the webinar is still in progress, as long as the host has not locked the webinar.



*Groundwater Sustainability Plan  
Upper San Luis Rey Groundwater Subbasin*

***GEOSCIENCE***

The First Name in Groundwater

*Stakeholder Workshop  
Plan Area*

*March 24, 2021*

# *Plan Area Chapter*

## **Contents**

- Jurisdictional boundaries
- Land use
- Water sources and use sectors
- Existing water resources monitoring and management programs
- Legal decisions
- Key policies (well construction & abandonment, water efficiency, etc.)
- Notice and communication (public involvement plan)

## **Goal**

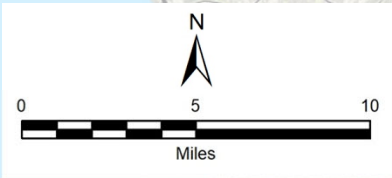
- Lay foundation for characterization of basin hydrology and development of groundwater budgets.

# Upper San Luis Rey Valley Groundwater Basin

**San Luis Rey Valley – Lower San Luis Rey Valley**

**San Luis Rey Valley – Upper San Luis Rey Valley**

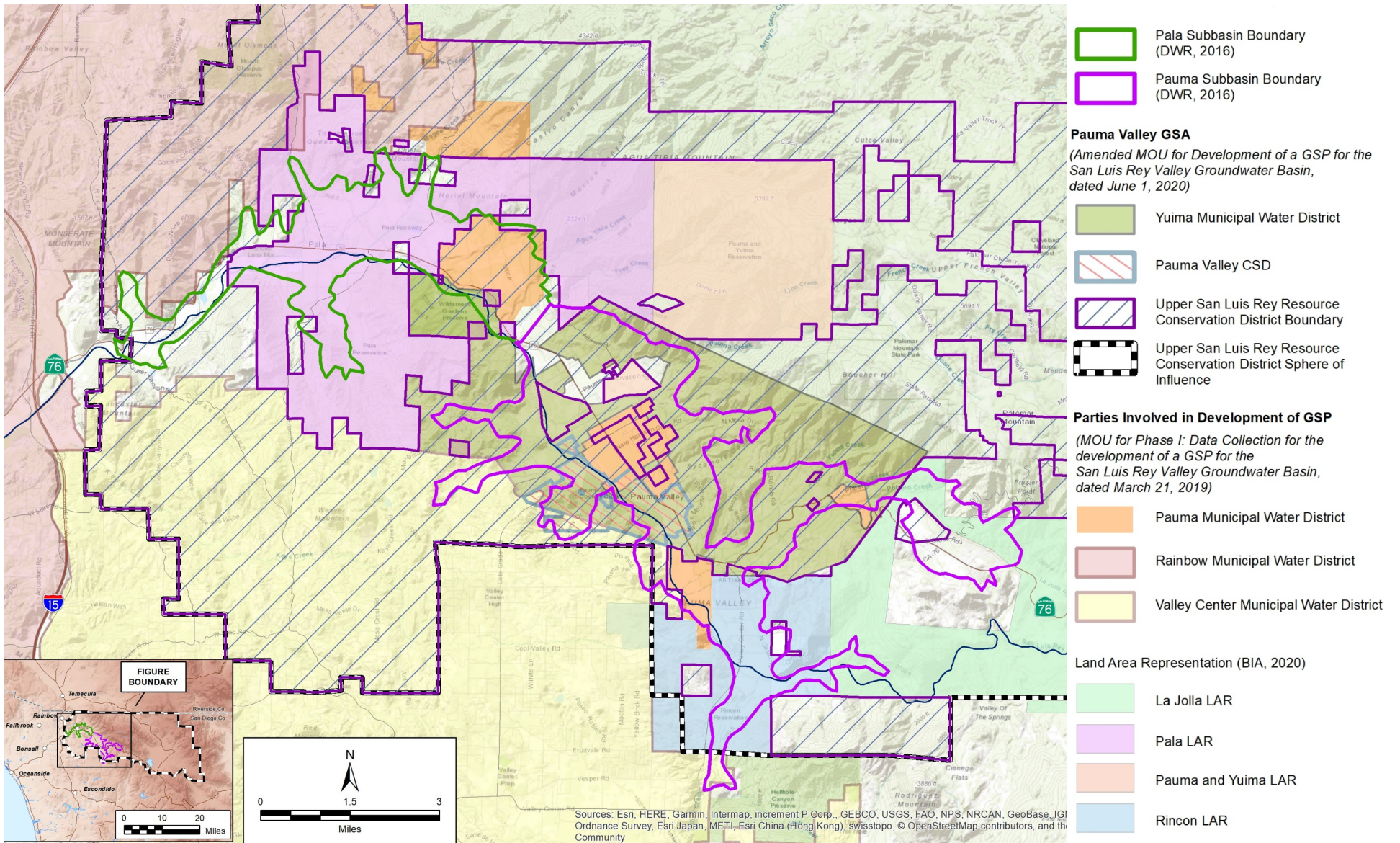
**San Luis Rey River Watershed**



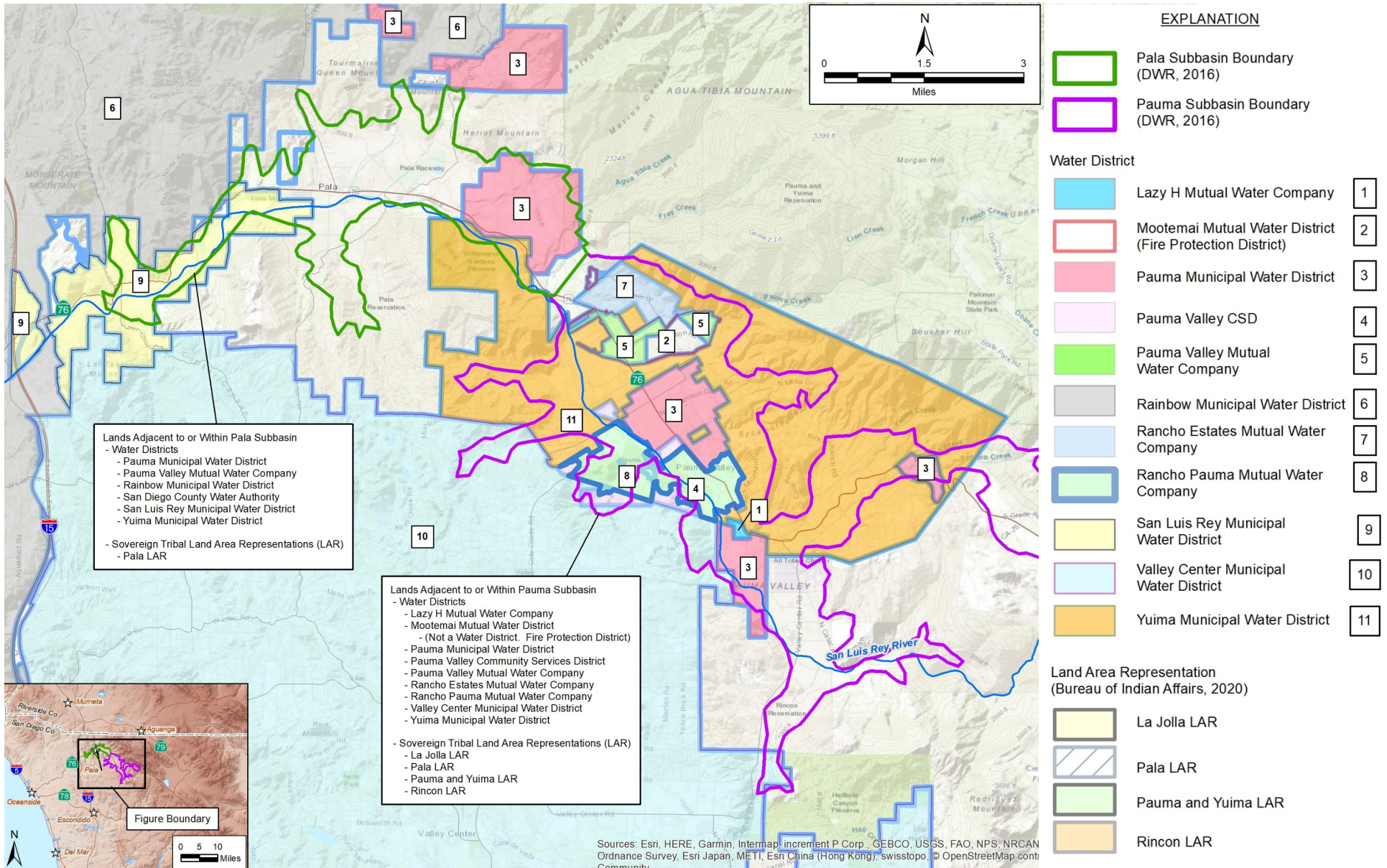
**Pauma Valley GSA  
GEOSCIENCE**



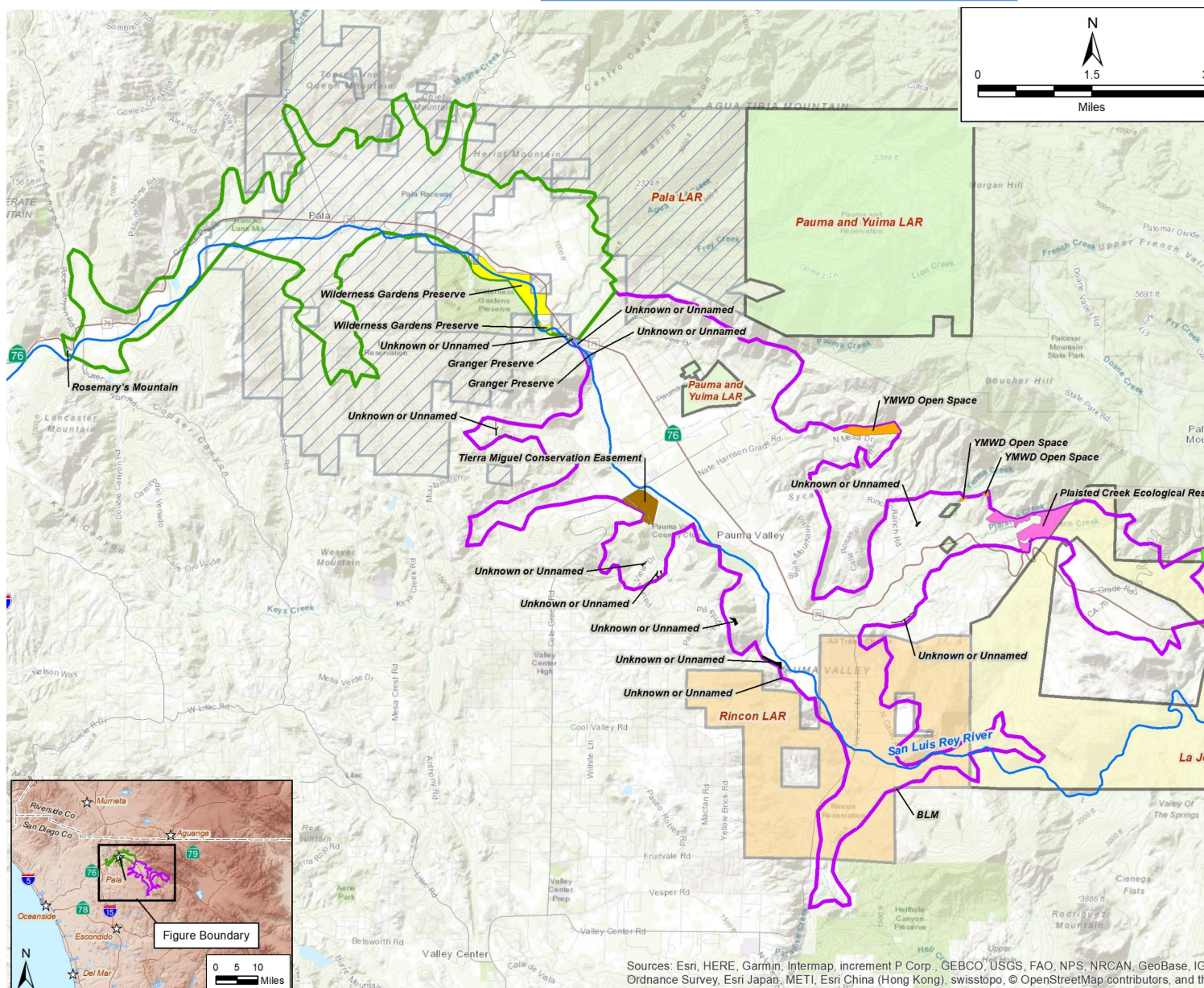
# Plan Area and GSA



# Water Agencies



# Special Lands

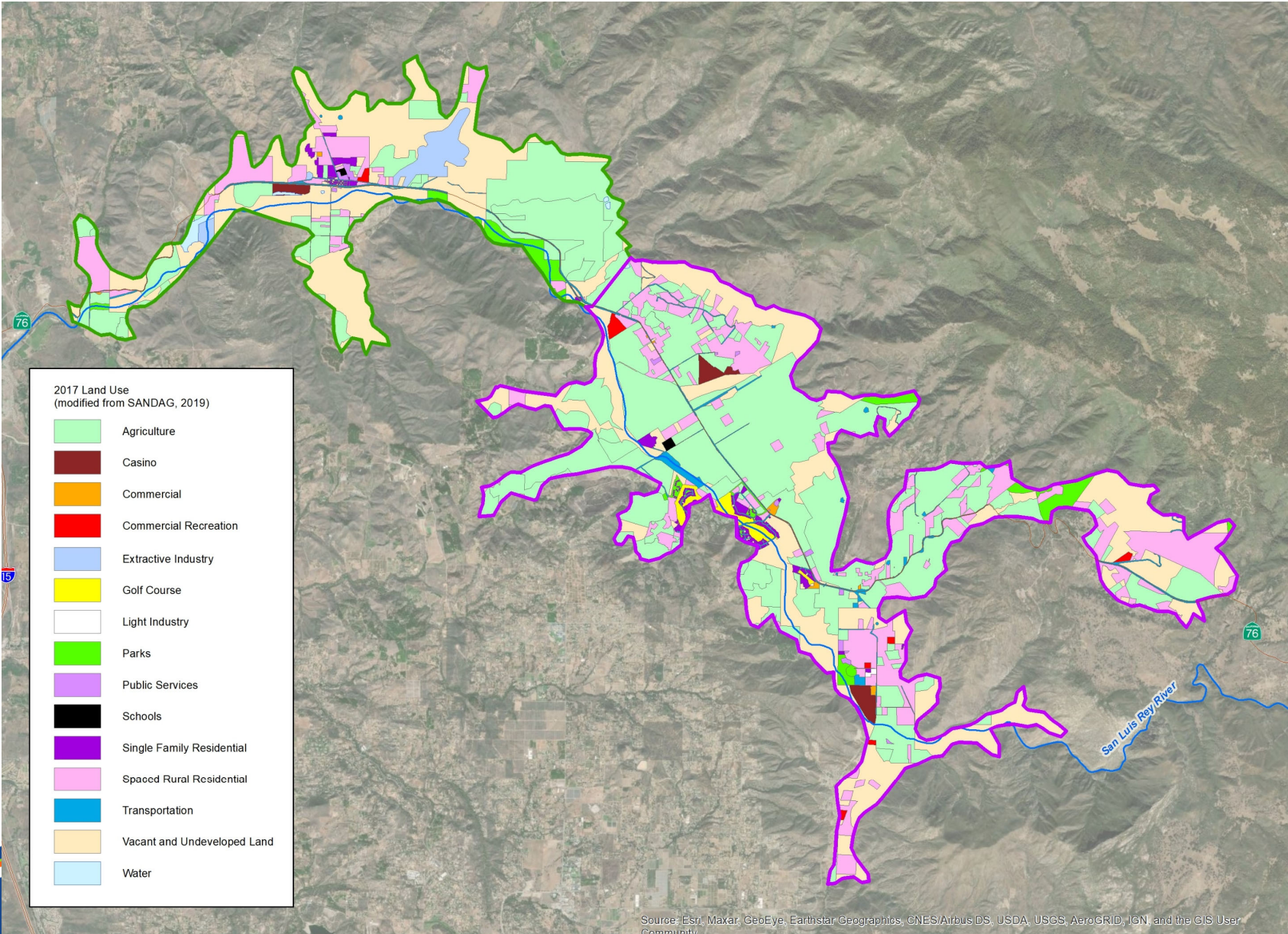


## EXPLANATION

- Pala Subbasin Boundary (DWR, 2016)
- Pauma Subbasin Boundary (DWR, 2016)
- California Protected Area Database, 2020b Release (Name and Operating Agency)
- County Agency**
- Wilderness Gardens Preserve (Operated by County of San Diego)
- State Agency**
- Plasted Creek Ecological Reserve (Operated by Calif. Department of Fish and Wildlife)
- Non Profit - Land Trust**
- Granger Preserve (Operated by Fallbrook Land Conservancy)
- Federal Agency**
- U.S. Bureau of Land Management Land
- Cleveland National Forest (Operated by U.S. Forest Service)
- Water District**
- YMWD Open Space (Operated by Yuima Municipal Water District)
- California Conservation Easement Database, 2018 Release (Name and Operating Agency)
- Non Profit**
- Rosemary's Mountain (Operated by Center for Natural Lands Management)
- Tierra Miguel Conservation Easement (Operated by U.S. Natural Resources Conservation Service)
- Unknown, SanGIS reported
- Land Area Representation (Bureau of Indian Affairs, 2020)**
- La Jolla LAR
- Pala LAR
- Pauma and Yuima LAR
- Rincon LAR

Sources: Esri, HERE, Garmin, Intermap, increment P Corp., GEBCO, USGS, FAO, NPS, NRCAN, GeoBase, IGN, Ordnance Survey, Esri Japan, METI, Esri China (Hong Kong), swisstopo, © OpenStreetMap contributors, and the

# Land Use (2017)



Source: Esri, Maxar, GeoEye, Earthstar Geographics, CNES/Airbus DS, USDA, USGS, AeroGRID, IGN, and the GIS User Community

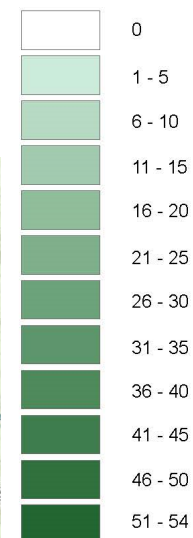
# *Water Sources*

---

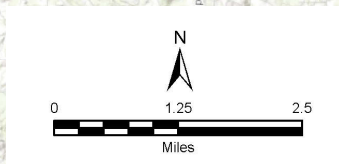
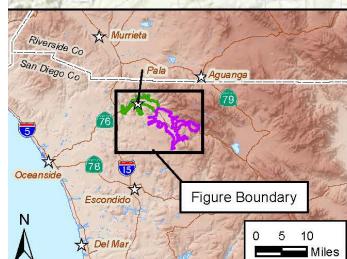
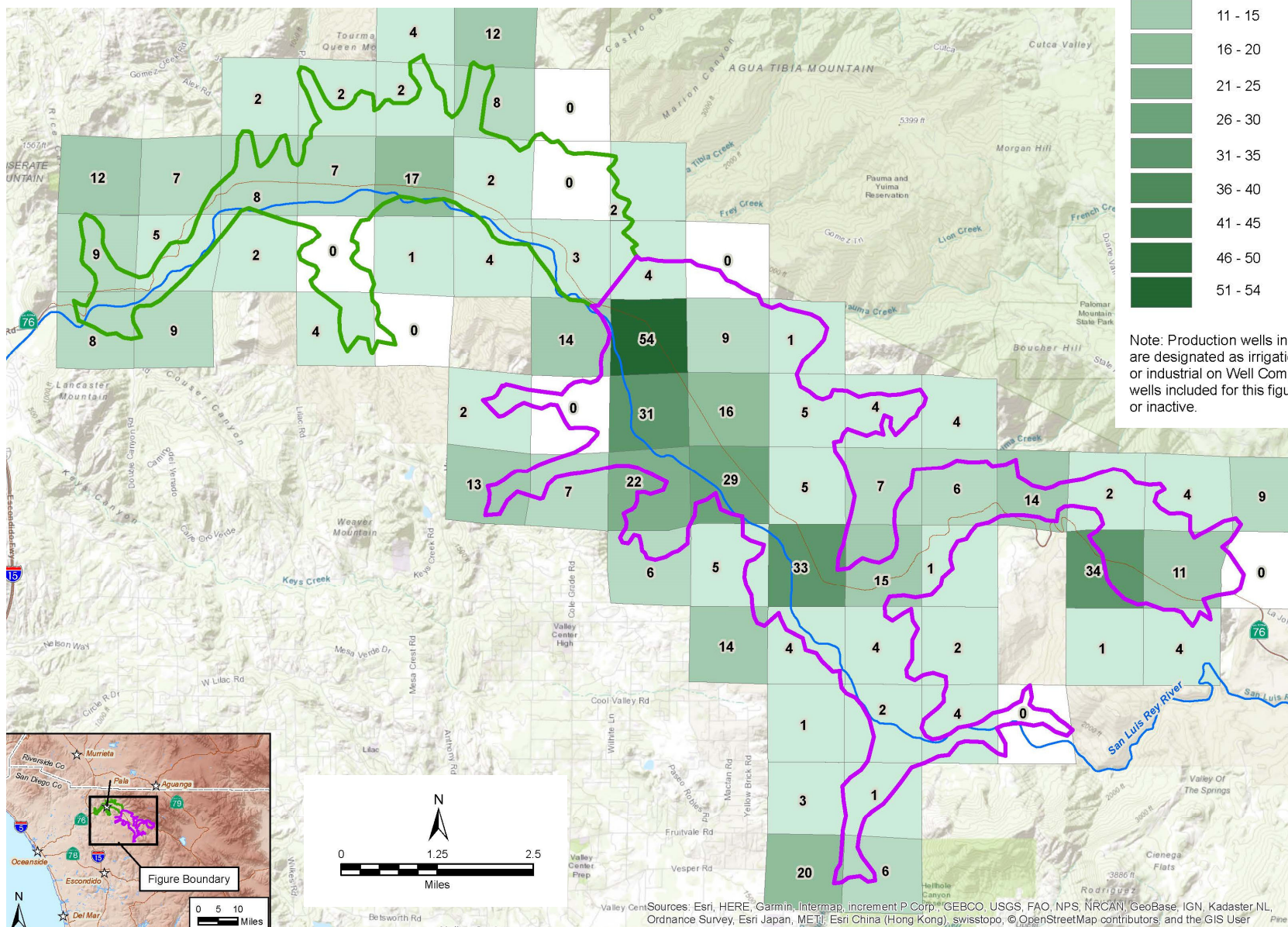
- **Groundwater**
  - Municipal, private wells
- **Surface Water**
  - Lake Henshaw (Vista Irrigation District)
  - IDA Hegardt Reservoir
  - Surface water diversion rights
- **Imported Water**
  - Metropolitan Water District of Southern California
  - San Diego County Water Authority

# Well Density Map

Density of Productions Wells per Square Mile  
(Source: DWR Well Report Stats by Section, 2021)



Note: Production wells include those wells that are designated as irrigation, municipal, public, or industrial on Well Completion Reports. Some wells included for this figure may be abandoned or inactive.



Sources: Esri, HERE, Garmin, Intermap, increment P Corp., GEBCO, USGS, FAO, NPS, NRCAN, GeoBase, IGN, Kadaster NL, Ordnance Survey, Esri Japan, METI, Esri China (Hong Kong), swisstopo, © OpenStreetMap contributors, and the GIS User Community



# *Existing Groundwater Monitoring Programs*

---

- **Water Levels**

- California's Statewide Groundwater Elevation Monitoring (CASGEM) Program

- **Production**

- Integrated Regional Water Management Plan for the greater San Diego region (Water Authority)

- **Quality**

- California Department of Toxic Substances (DTSC): Envirostor Database
- Environmental Protection Agency: Safe Drinking Water Information System (SDWIS)
- State Water Resources Control Board (SWRCB): Geotracker, Groundwater Ambient Monitoring and Assessment (GAMA) Program,

Pauma Valley GSA

*GEOSCIENCE*

# *Existing Subsidence Monitoring Programs*

---

- **None**
  - Land subsidence will likely not be a concern for the Upper San Luis Rey Valley Groundwater Basin



# *Existing Surface Water Monitoring Programs*

---

- **Streamflow**

- United States Geological Society (USGS) gages:  
National Water Information System (NWIS)

- **Diversions**

- Electronic Water Rights Information Management System (eWRIMS)

## *Existing Climate Monitoring Programs*

---

- **National Oceanic and Atmospheric Administration (NOAA)**
  - Station at Henshaw Dam
- **PRISM Climate Group**
  - 30-year normal precipitation contours
- **Supplemental long-term precipitation records**

## *Existing Management Programs*

---

- **San Diego County Groundwater Ordinance**
- **Water Quality Control Plan for the San Diego Basin**
- **San Diego Integrated Regional Water Management Plan**
- **San Diego Regional Agricultural Water Management Plan (draft)**

Pauma Valley GSA

*GEOSCIENCE*

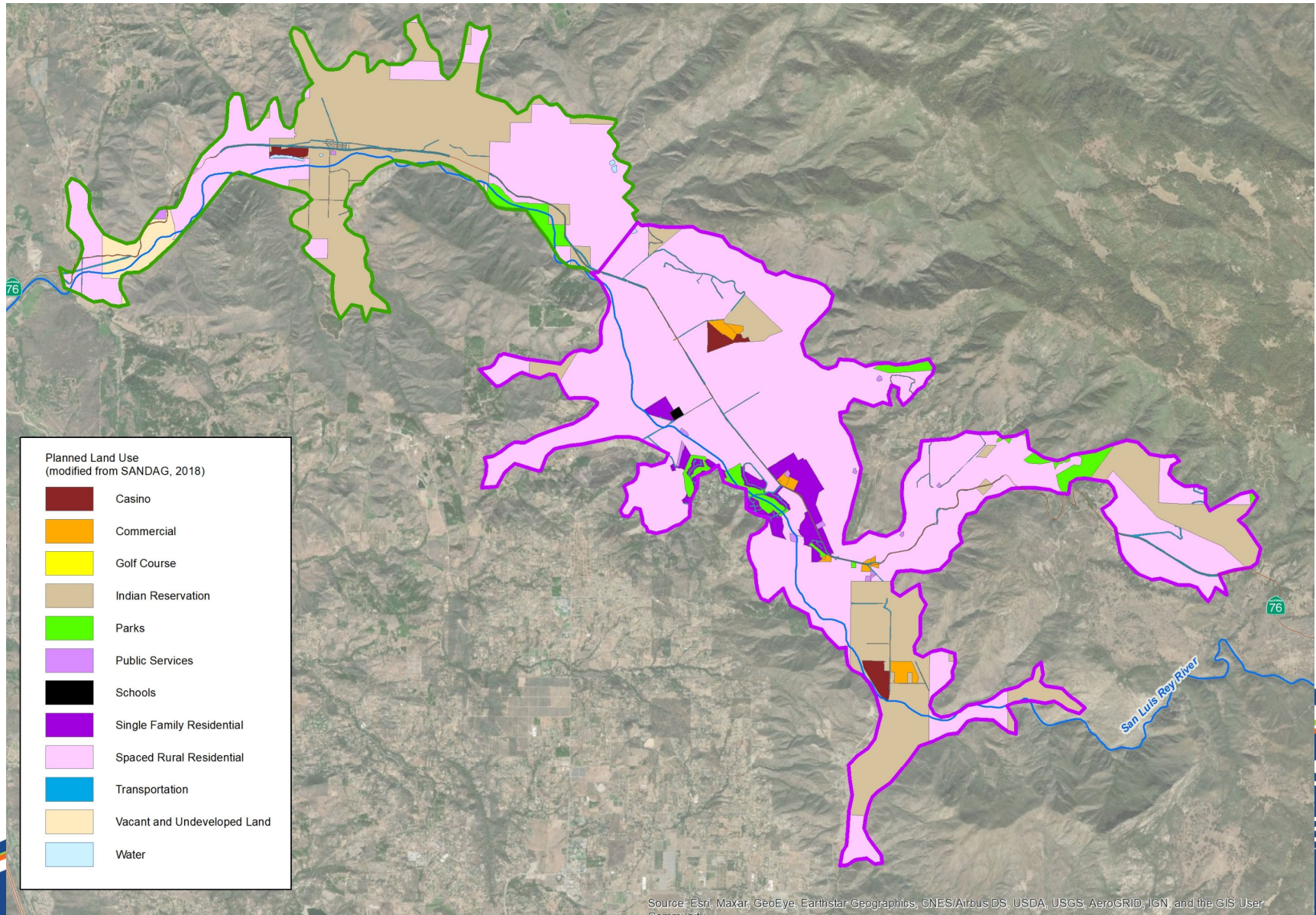


## *Legal Decisions*

---

- **Stipulated Judgment: Strub et al. v. Palomar Mutual Water Company**
  - Improvement District “A” (IDA)
- **San Luis Rey Indian Water Rights Settlement Act**

# Planned Land Use



# *Future Water Demand and Supply*

---

- **Basin management outlined in the GSP will work towards preventing:**
  - Chronic lowering of groundwater levels
  - Significant and unreasonable reduction of groundwater storage.
  - Significant and unreasonable degraded groundwater quality.
  - Depletions of interconnected surface water that have significant and unreasonable adverse impacts on beneficial uses of the surface water.

# *Efficient Water Management Practices*

---

- **Water conservation key element in San Diego County Groundwater Ordinance**
  - Technical and financial support for agricultural water use efficiency
  - Drought response actions – additional regulations
  - Different water rates to encourage efficiency

Pauma Valley GSA

*GEOSCIENCE*






## *Notice and Communication*

---

- **GSP development is meant to be a collaborative process involving all interested stakeholders**
- **Stakeholder outreach guided by Public Involvement Plan**
  - Mailers, project updates, GSP webpage, informational material, stakeholder workshops
- **Joint Powers Authority** (in progress)



# Upper San Luis Rey GSP Schedule

Winter 2018/2019	Summer - Winter 2020	Spring 2021	Summer 2021	Fall 2021	Winter 2021/2022
Notice of Intent to Develop GSP	Data Collection	Plan Area & Basin Setting  Stakeholder Meeting 	Sustainable Management Criteria  Stakeholder Meeting 	Projects & Management Actions  GSP Implementation  Stakeholder Meeting 	Notice of Proposed GSP Adoption  Public Review of Draft GSP  Public Hearing to Adopt GSP 
Ongoing Community Outreach 					

# Stakeholder Meetings

Meeting Date	Draft Chapter
January 27, 2021	First Stakeholder Workshop
March 24, 2021	Plan Area
Apr/May 2021 (TBD)	Basin Setting (Water Budget)
June 2021 (TBD)	Sustainable Management Criteria
Aug/Sept 2021 (TBD)	Projects and Management Actions
Sept/Oct 2021 (TBD)	Plan Implementation
Nov 2021 (TBD)	Public Review of Draft GSP (Public Hearing to Adopt GSP)



# Questions

Please feel free to contact us!

***Geoscience Support Services, Inc.***

Lauren Wicks (Project Geohydrologist)

[Lwicks@geoscience-water.com](mailto:Lwicks@geoscience-water.com)

Brian Villalobos (Principal Geohydrologist)

[Bvillalobos@geoscience-water.com](mailto:Bvillalobos@geoscience-water.com)

***Yuima Municipal Water District***

Amy Reeh (Interim General Manager)

[amy@yuimamwd.com](mailto:amy@yuimamwd.com)

Pauma Valley GSA

***GEOSCIENCE***