



Upper San Luis Rey Valley Groundwater Sustainability Plan

GEOSCIENCE

The First Name in Groundwater

***5-Year Periodic
Evaluation & Plan
Amendment Kick-Off***

June 17, 2025

Overview

- 5-Year Periodic Evaluation
- DWR Recommended Corrective Actions (RCA)
- USLR Surface Water and Groundwater Model Update
- Well Impact Analysis
- Reevaluate Basin Sustainability Management Criteria (SMC)
- Plan Amendment
- Schedule

5-Year Periodic Evaluation

- Required by DWR a minimum of every 5 years following initial GSP submittal
- USLR Valley GSP submitted January 2022 → Periodic Evaluation due **January 2027**

What's Involved in a Periodic Evaluation?

- Describe whether implementation of the GSP is meeting and/or is on track to meet the sustainability goal and objectives,
- Compare current groundwater conditions over the evaluation cycle to established SMC,
- Provide an assessment of monitoring networks, and
- Discuss any other GSP topics that have changed during implementation of the GSP

DWR Recommended Corrective Actions (RCA)

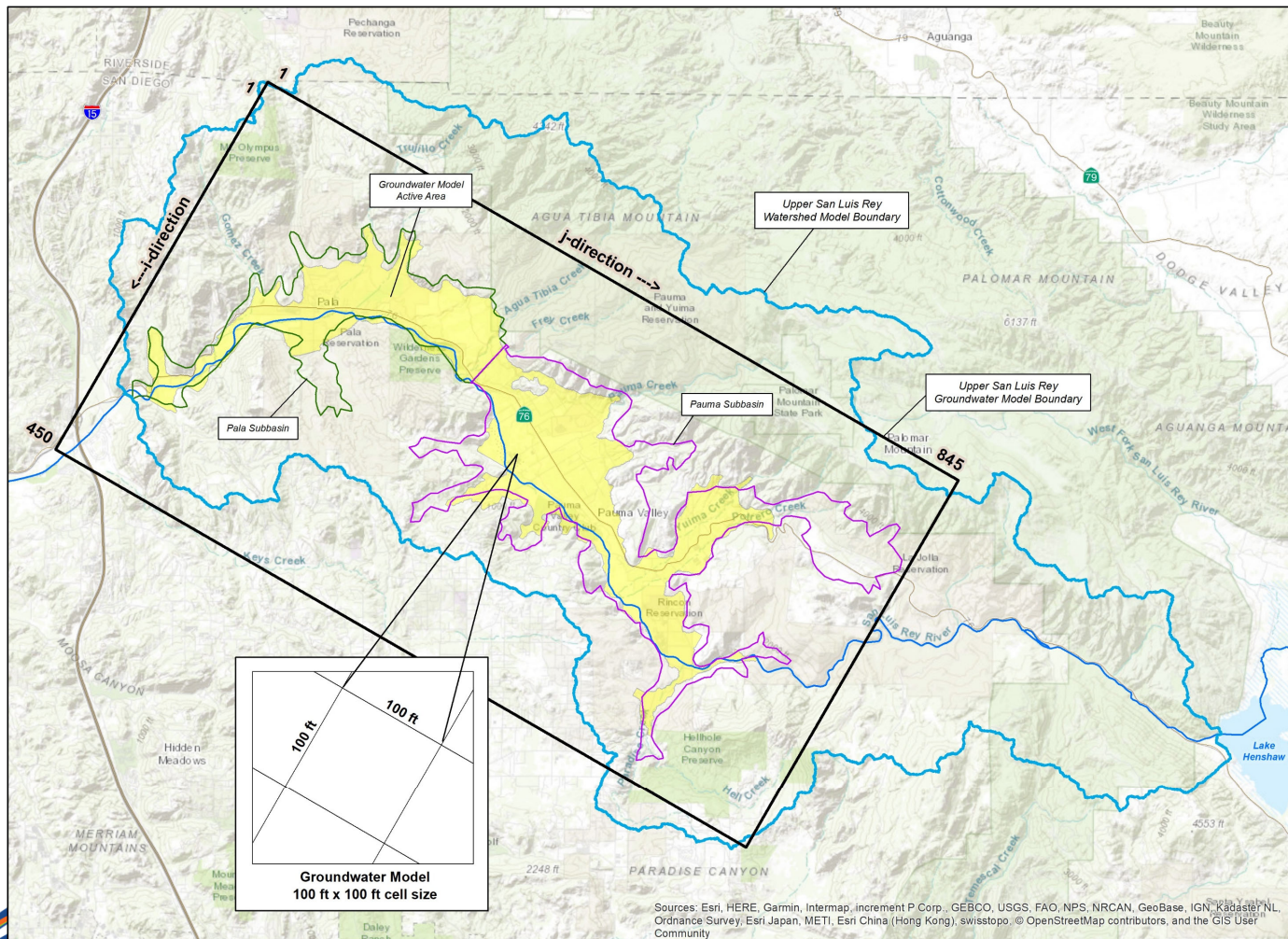
GSP Staff Assessment (January 18, 2024):

1. Update the administrative information for the Groundwater Sustainability Agency (GSA), including governance, decision-making process, and area covered, and describe how groundwater management has considered the interests of tribal nations.
2. Provide historical, current, and future water budgets for both groundwater and surface water systems based on updated information, where available.
3. Provide additional information to support sustainable management criteria (SMCs) for groundwater levels, including conducting a well impact analysis to evaluate potential impacts on domestic wells.

DWR RCA (continued)

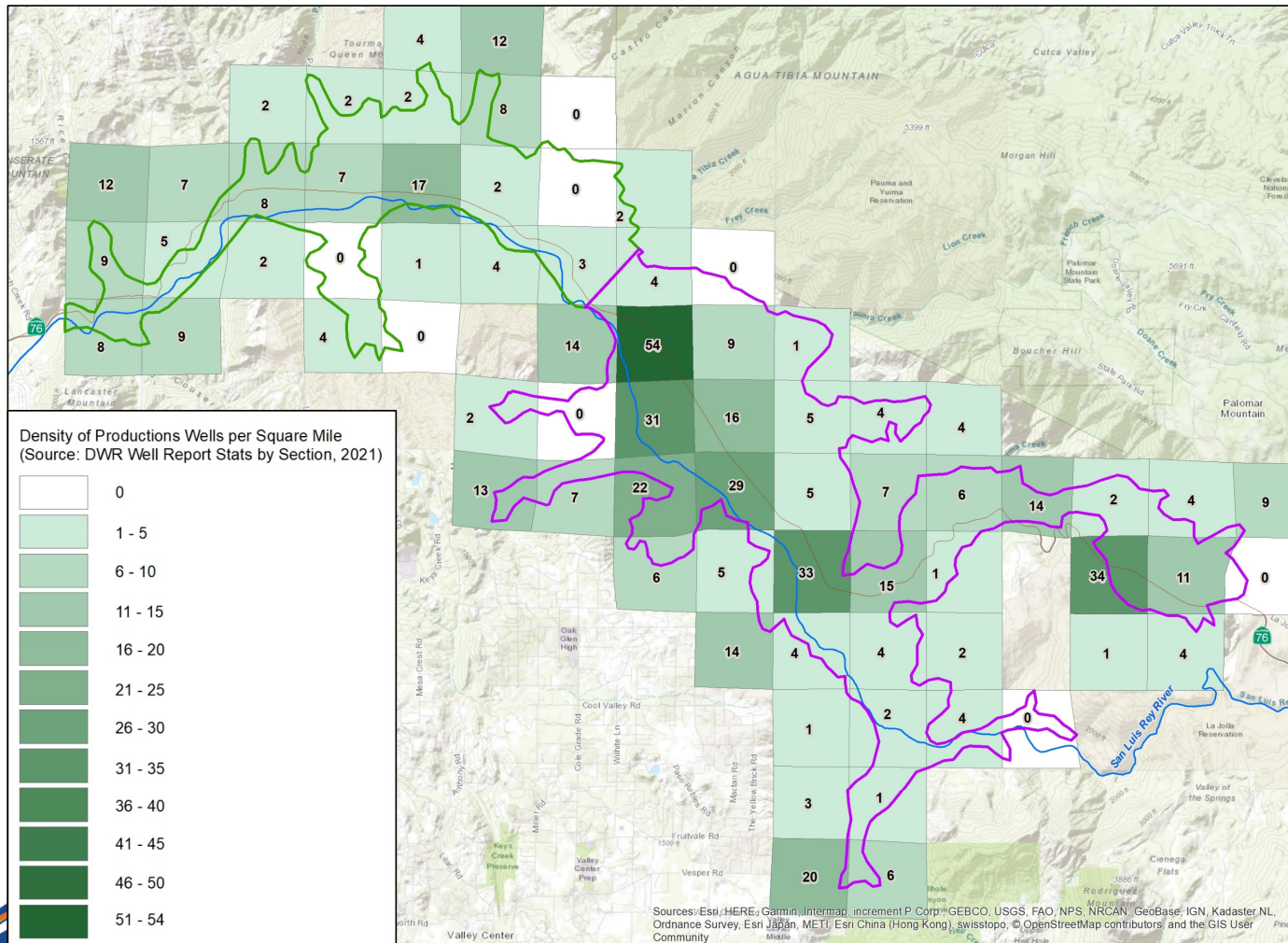
4. Provide additional information to support SMC for degradation of water quality, including definition of undesirable results at representative monitoring sites (RMSs).
5. Establish SMC for land subsidence considering the planned operation of the subbasin groundwater levels below historical lows.
6. Continue filling data gaps, collecting additional monitoring data, coordinating with resources agencies and interested parties to understand beneficial uses and users that may be impacted by depletions of interconnected surface water caused by groundwater pumping, and refining SMC for interconnected surface water as appropriate.

USLR Surface Water and Groundwater Model Update



- Calibrated to available streamflow and groundwater measurements
- Jan 1991 – Dec 2020
- Update will extend calibration through 2024
- Refine water budgets
- Well Impact Analysis
- Data request

Well Impact Analysis



- Consider the location, depth, and type of groundwater wells in the subbasin, including any potential impacts on the ability of these wells to produce water
- Improve understanding of basin pumping
- Emphasis on domestic and shallow wells

Reevaluate Basin Sustainability Management Criteria (SMC)



Chronic Lowering of
Groundwater Levels



Reduction of
Groundwater in
Storage



Interconnected
Surface Water
Depletions



Water Quality
Degradation

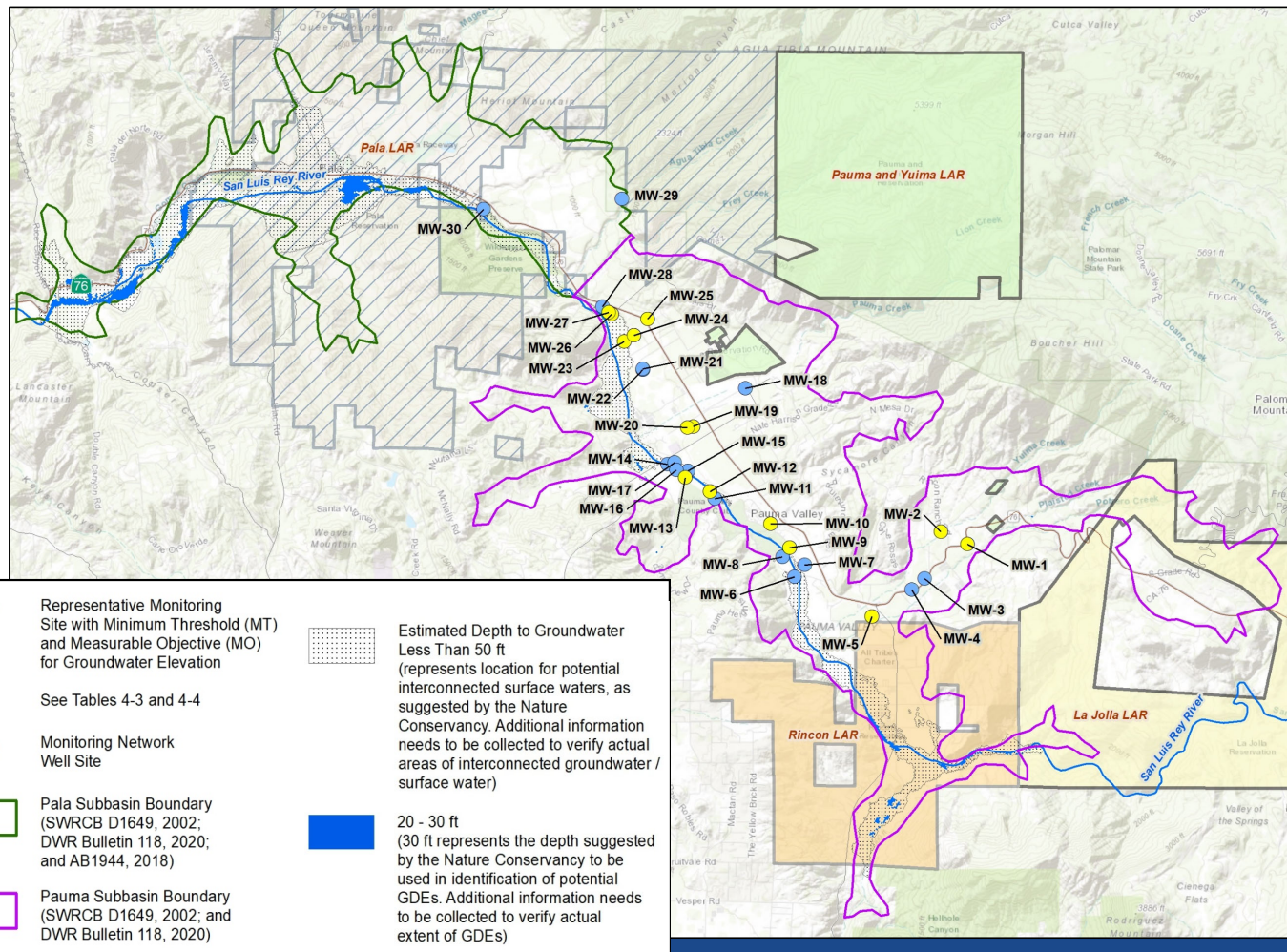


Land Subsidence



Seawater Intrusion

Reevaluate Basin SMC (continued)



- Groundwater Levels
- Water Quality
- Interconnected Surface Water
- 2 Public Workshops

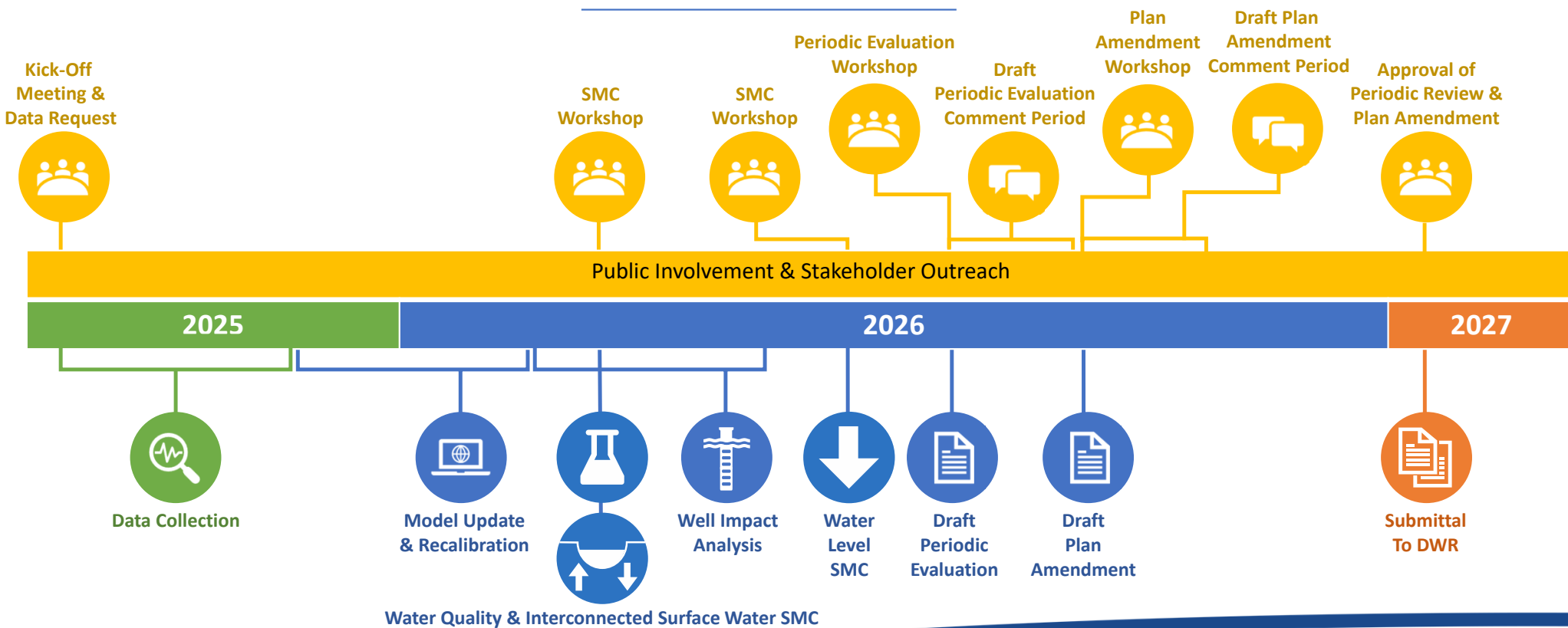
Plan Amendment

Include necessary updates, such as:

- Updated GSA information
- Changes to monitoring network
- Additional clarification of GSP details
- Changes to SMC and interim milestones
- Funding sources/updated information for Projects and Management Actions

Public outreach and notifications per DWR requirements

Schedule



Upcoming Dates

Date	Event
September 30, 2025	End of Data Collection
October 31, 2025	End of Well Refinement & Beginning of Model Update



Questions

Lauren Wicks (Geoscience Support Services, Inc.)
Lwicks@geoscience-water.com