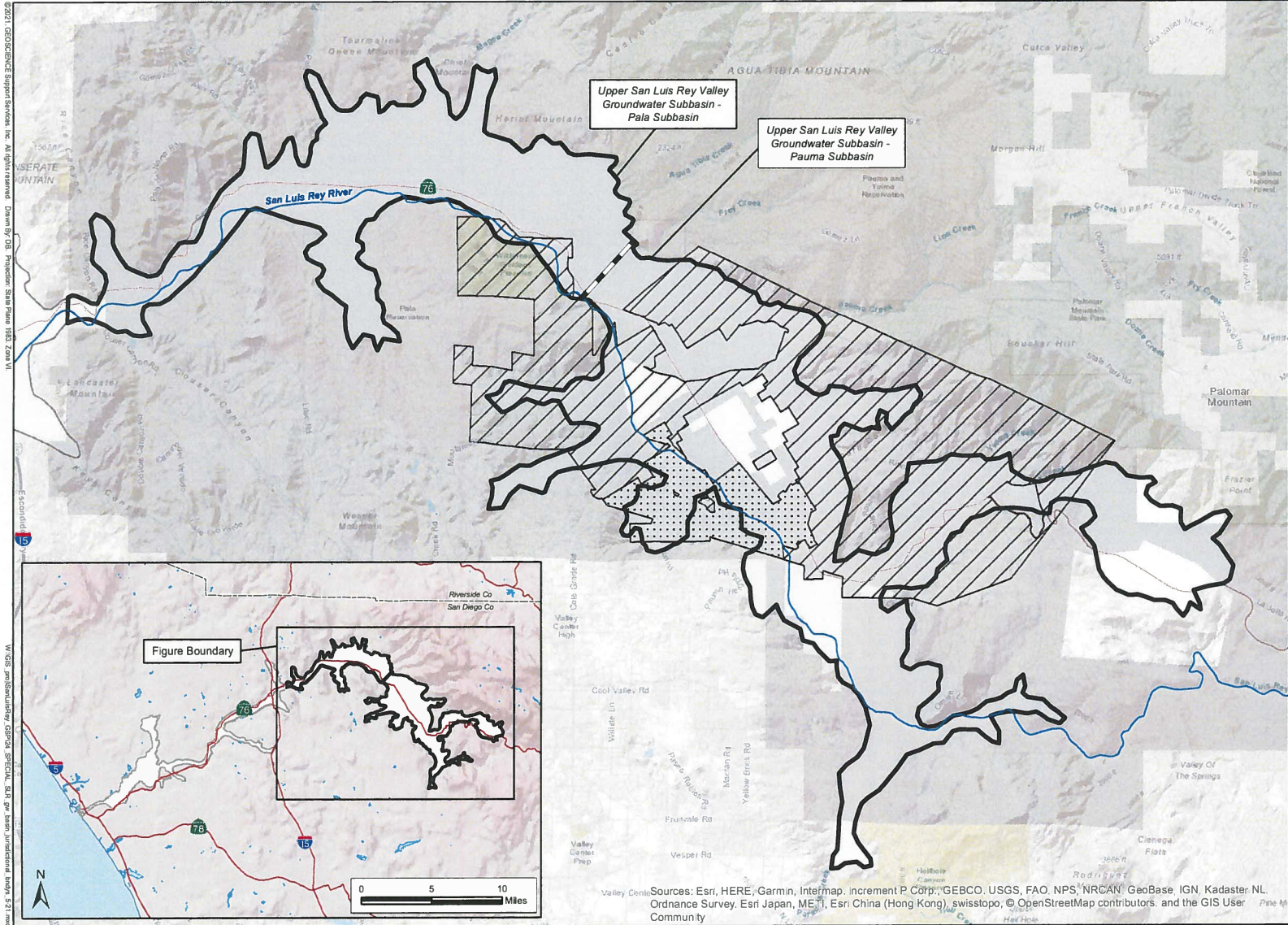


2021 | GEOSCIENCE Support Services, Inc. All rights reserved. Drawing: GIS Production Status: Final Title: 2021-01

2021 | GEOSCIENCE Support Services, Inc. All rights reserved. Drawing: GIS Production Status: Final Title: 2021-01

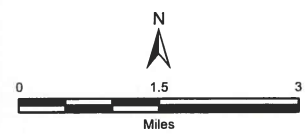
May-21

PAUMA VALLEY GSA



**EXPLANATION**

- Groundwater Basins/Subbasins**
- San Luis Rey Valley Groundwater Basin (DWR Bulletin 118, 2016)
- Upper San Luis Rey Valley Groundwater Subbasins - Pala and Pauma (AB1944, 2018)
- Frey Creek (SWRCB D1649, 2002)
- Pauma Valley GSA**
- Upper San Luis Rey Resource Conservation District
- Pauma Valley Community Services District
- Yuima Municipal Water District



**SAN LUIS REY VALLEY  
GROUNDWATER BASIN  
JURISDICTIONAL  
BOUNDARIES**

Sources: Esri, HERE, Garmin, Intermap, increment P Corp., GEBCO, USGS, FAO, NPS, NRCAN, GeoBase, IGN, Kadaster NL, Ordnance Survey, Esri Japan, METI, Esri China (Hong Kong), swisstopo, © OpenStreetMap contributors, and the GIS User Community