



Marie Stopes SRH Services

Outline

Introduction

Definitions – Sexual
Reproductive Health

STI Screening, Management,
Awareness

MSPNG SRH
Services

Pricelist

Conclusion- Questions

Brief Introduction of MSPNG

- **Marie Stopes Papua New Guinea**

- Established in 2006, Marie Stopes Papua New Guinea (MSPNG) has been delivering high-quality family planning and sexual and reproductive health services across Papua New Guinea (PNG). Working collaboratively with the government of PNG and other local partners, MSPNG delivers services through four operating models:
- **Outreach teams** travel by four-wheel drive, boat, or plane to provide services to people without other access to family planning and sexual and reproductive health. MSPNG has eight mobile outreach teams.
- **Embedded family planning providers based in 13 hospitals** across the country, as a mode of public sector support. The specially trained staff provide contraception to post-partum women before being discharged from the postnatal ward.
- **Trainers and supervisors strengthen the skills of public sector providers** through the National Family Planning Training Program. MSPNG conducts training, supportive supervision and completes competency assessments for front-line health workers at the provincial level
- **MSPNG's centres in Port Moresby and Lae** provide a full range of sexual and reproductive health services to urban populations.

MSI Reproductive Choices has been a driving force **in family planning** and women's health services for over 35 years (global).

However, now, we are extending our services: expanding our range to be a true woman and family wellness provider that serves women through all stages of their life, from menstruation to menopause.

This shift will be fundamental to our long-term sustainability.

Our clinics will service women (and their partners where appropriate) through all stages of their womanhood. Whether they are trying for a baby, taking their sexual relationship to the next level, or going through menopause;

MSI will empower them to feel like the amazing women they are at every life stage and body change. From menstruation to menopause, you can always be sure to receive expert care and information from MSI.



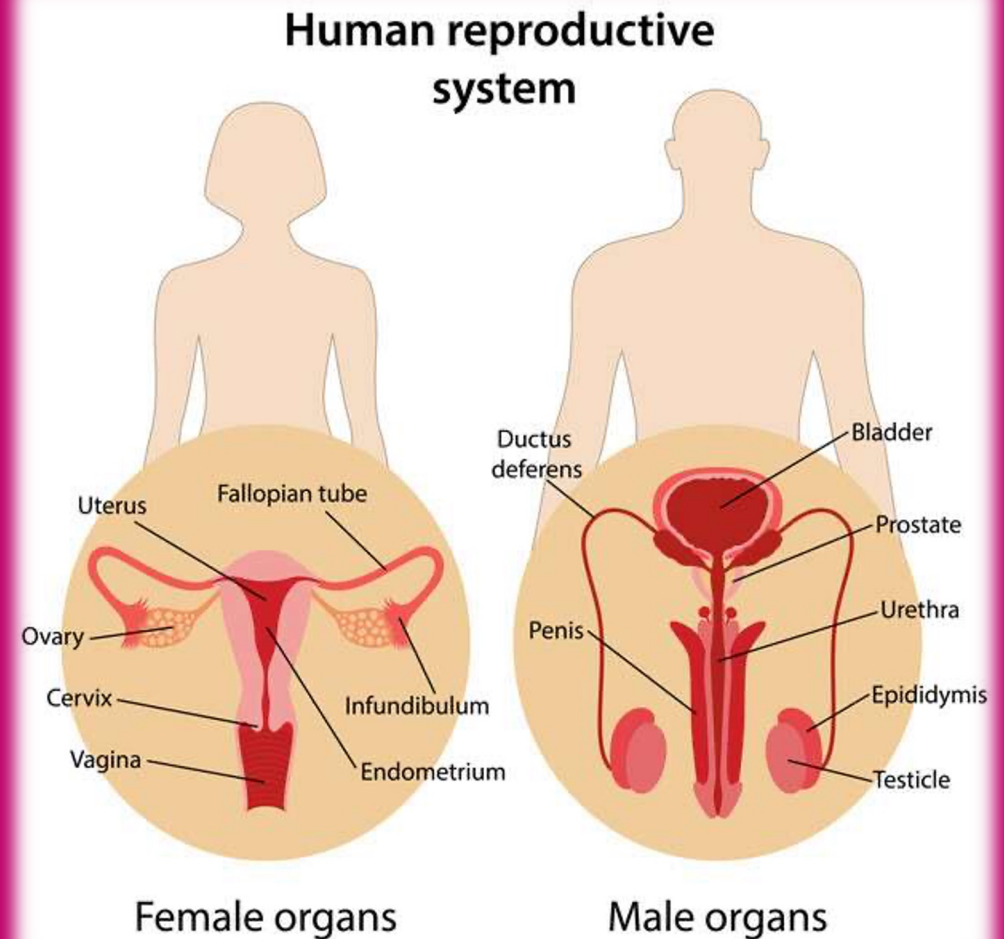
**The Extended SRH services are mainly
provided at out Centres in**



Lae & Port Moresby

Sexual Reproductive Health

- The term 'sexual and reproductive health' can be defined as a person's right to a healthy body and the autonomy, education and healthcare to freely decide who to have sex with and how to avoid sexually transmitted infections or unintended pregnancy. Sexual health is an integral part of overall health and well-being, ensuring everyone can have pleasurable and safe sexual experiences, free of coercion, discrimination or health risks.



Sexual Reproductive Health



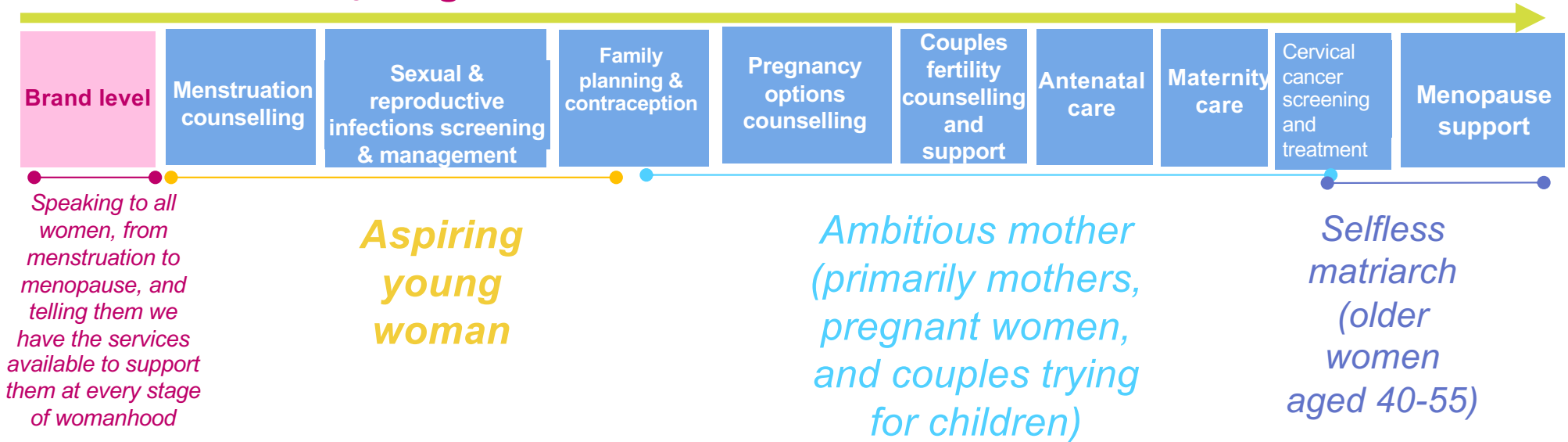
- Access to sexual and reproductive health services enable people to exercise this right. It can take the form of medical care related to the reproductive system, for example, to treat a sexually transmitted infection, or the facilitation of reproductive autonomy with the provision of contraception and abortion care – **MSI Reproductive Choices**

MSI SRH Services at Every Stage

Our services

Throughout their lives, women may need some or all these services, but MSI is here to reassure them they are available if ever they need. They may visit us alone, or they may come to us together with their partners or families.

Service areas for every stage of woman





How are sexual transmitted infections contracted?

Sexual Contact

Blood and Bodily Fluid

Use of same blades

Mother to child





Types of Specific ST Infection

Gonococcal infections

Chlamydia Trachomatis infections

Syphilis

Chancroid

Donovanosis

Genital Herpes/Warts

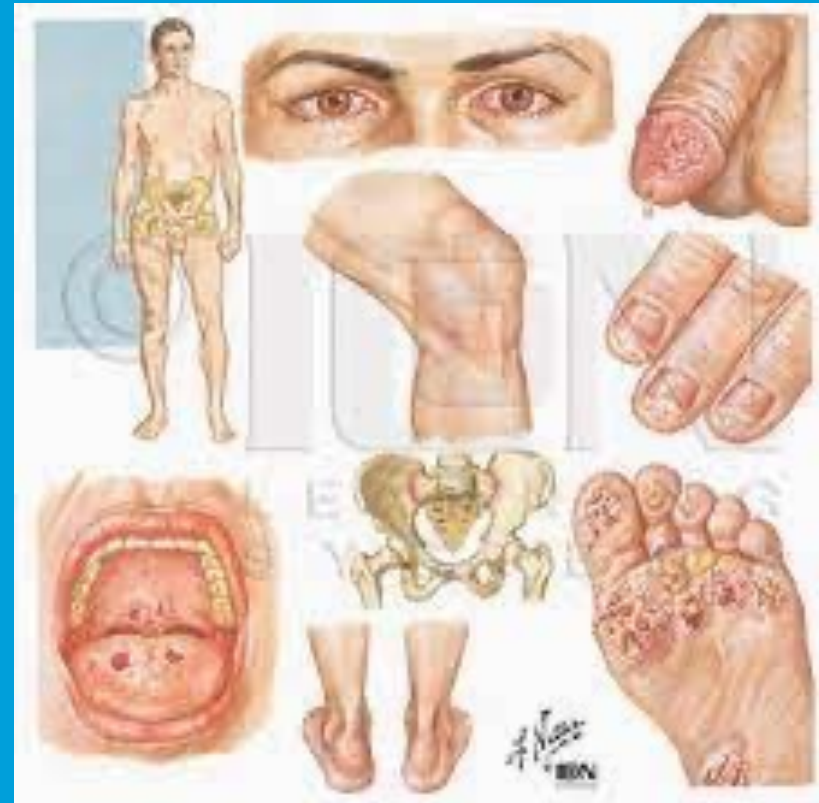
Trichomonas vaginalis infection

Bacterial Vaginosis

Candidiasis

Scabies

Pubic Lice infestation



• Common STI symptoms

Symptoms and signs

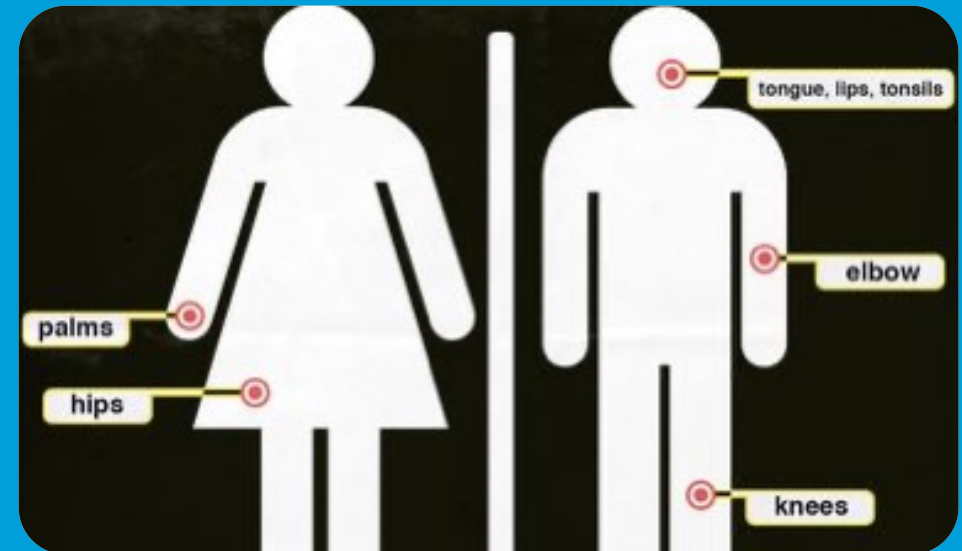
Vaginal Discharge that is abnormal in color, odor, amount or consistency

Itching or irritation of the vulva or vagina

Lower abdominal pain

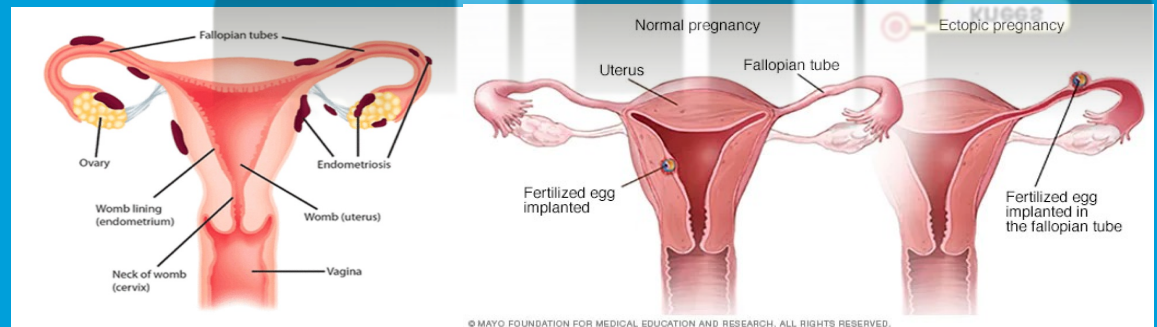
Genital ulcers, sores, or blisters

Swelling, lumps, or ulcer in the groin



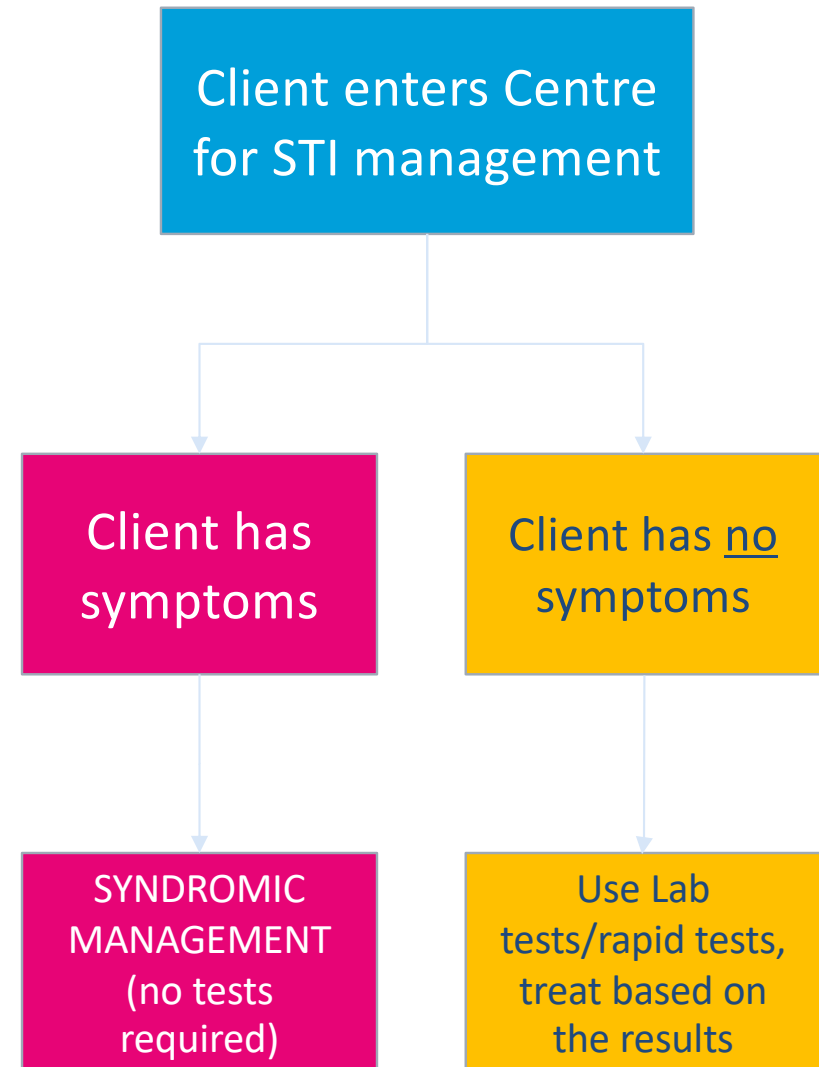
Complication

INFERTILITY in
both males and females



STI Management

- **We use syndromic management to treat clients that present to us with symptoms of STIs.** Syndromic management is based on the identification of symptoms and signs (syndromes), and the provision of a treatment that will deal with the most frequently involved pathogens.
- **However, there is still a need for lab tests and rapid tests when a client without any symptoms comes into the clinic asking for sexual health check up** (e.g. after unprotected sex). In this case we can offer a variety of tests (RDT or laboratory tests) to screen for the most frequent STIs (Syphilis, HIV, Hep B, Chlamydia, Gonorrhoea, etc.)
- **Rapid tests that are WHO prequalified only are used**



Health Education

Early use of SRH service if you are already sexually active

Correct and consistent use of condom

Delay in starting sex- for young adults

Key messages



We can help - visit our trusted providers for advice and treatment.. Proactive screening and contraception - if you are in a relationship



It's not about sex - there's so many ways things might be wrong "down there" - **if you feel off come see us and we can help you understand and manage any SRH problems!**



Chlamydia and gonorrhoea are important preventable causes of pelvic inflammatory disease (PID) and infertility. Untreated, about 10-15% of women with chlamydia will develop PID. Early testing and treatment can prevent that.



UTIs are common and any woman can get it. UTIs are not sexually transmitted. You can test for an STI after 2-3 weeks. Results are instant. Screening and Management for both women and Men

Working Men and Women

Barriers

1. Don't know the symptoms
2. May feel ashamed to seek help
3. Misconceptions that infections are only caused through sexual contact
4. Don't know what can be treated or managed (or how)

Motivators to come

1. Suspecting something is wrong
 2. Relationship - stopping condom use
 3. May know some STIs are easy to treat
- /Untreated STIs a common cause for infertility
- Knowing how to identify a UTI easily accessible and affordable
- Knowing it is a confidential service
- Men being aware they can get tested for STIs at MSPNG

Services you require may require at this stage in life

- **Family planning and Contraception consultations,**
- **STI/RTI management,**
- **Pregnancy options counselling**
- **Circumcision**
- **Couples fertility counselling and support**
- **Ante natal care**
- **Menopause support**





Jump for Joy – when test results are good news !

Dear Everyone

You deserve healthcare as amazing as you.

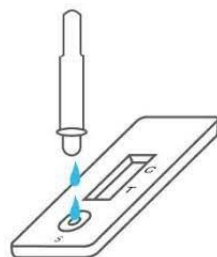
FOR EVERY
STAGE OF
woman

Brand billboard examples

MSI Reproductive Choices |
Marketing guidance

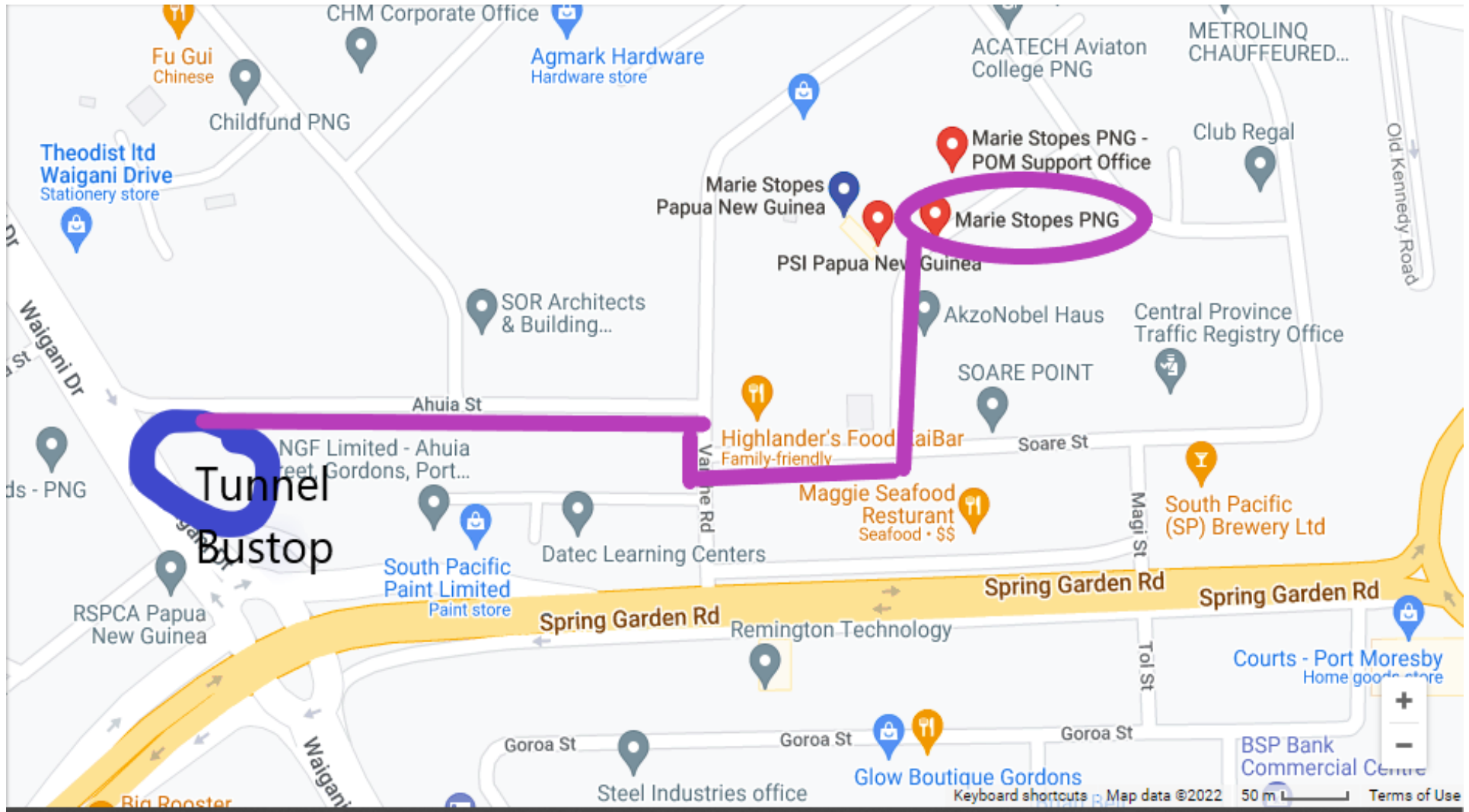
PRICES

FOR THE
SERVICES AT
OUR CENTRES

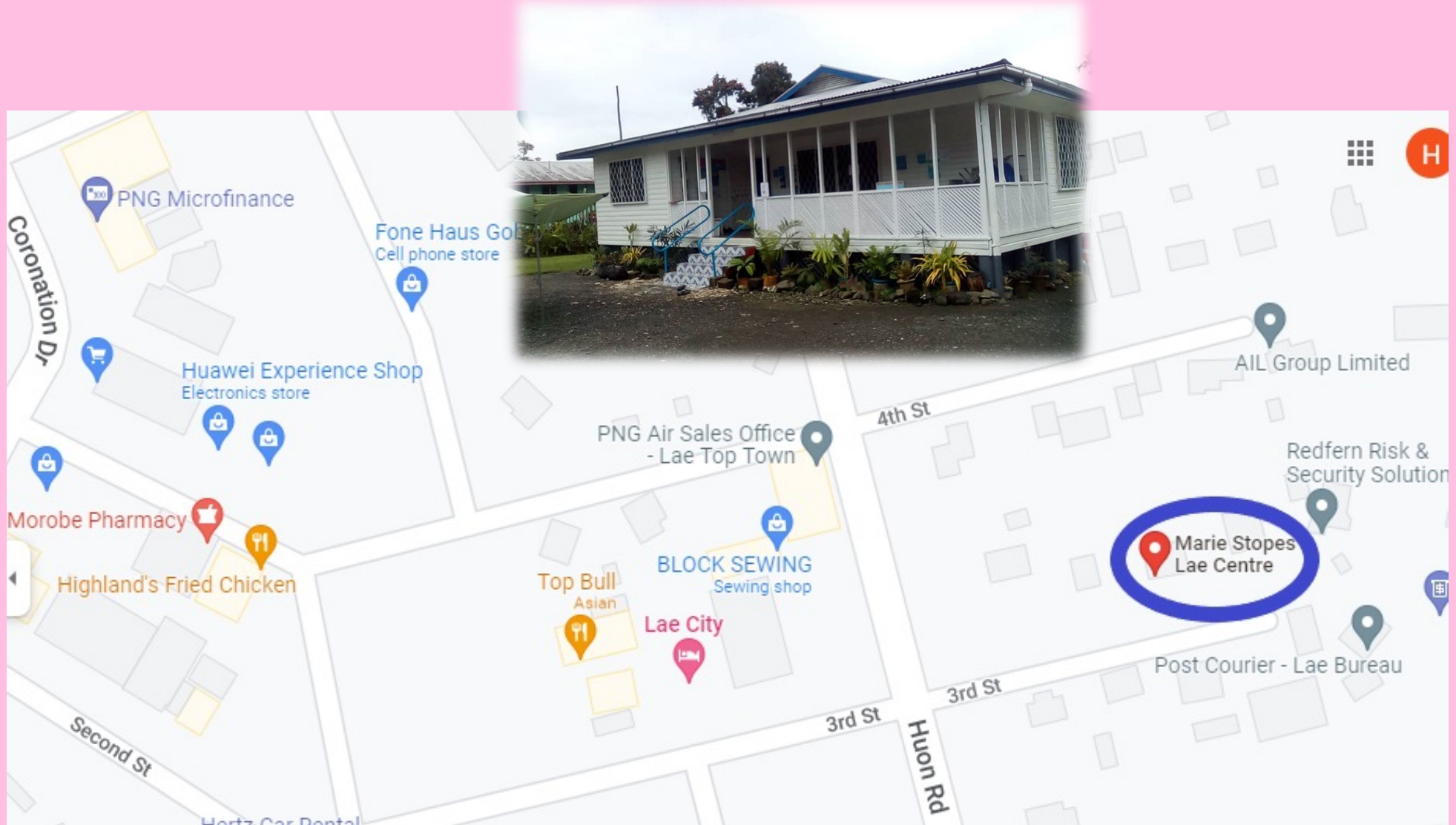


Services	Cost
FP Services	
Family Planning Consultation	K20.00 (included to all costs below)*
Male Condoms	Free
Pills	K45.00
Emergency Pill	K75.00
Depo Provera	K55.00
Implant insertion	K70.00
IUD insertion	K70.00
Implant removal	K85.00
IUD removal	K80.00
Vasectomy	K170.00
Tubal Ligation	K220.00
Circumcision	K270.00- K1000
Sexual Reproductive Health (SRH) Services	
General SRH Consultation	K10.00
Fertility Consultation	K100.00
Pregnancy Test	K30.00
STI Consultation	K20.00
STI TESTS (Syphilis, HIV, Hep B)	K30.00- K50 per test
MEDICATIONS	K1-K4 tablet

Come & Visit Us- Ume Street, Gordons, POM



Lae Centre – End of 3rd Street, Toptown



Call or Follow us on Social Media



Toll Free :1200

Lae Centre: 73734210

Pom Centre:73734207

Thank you

