

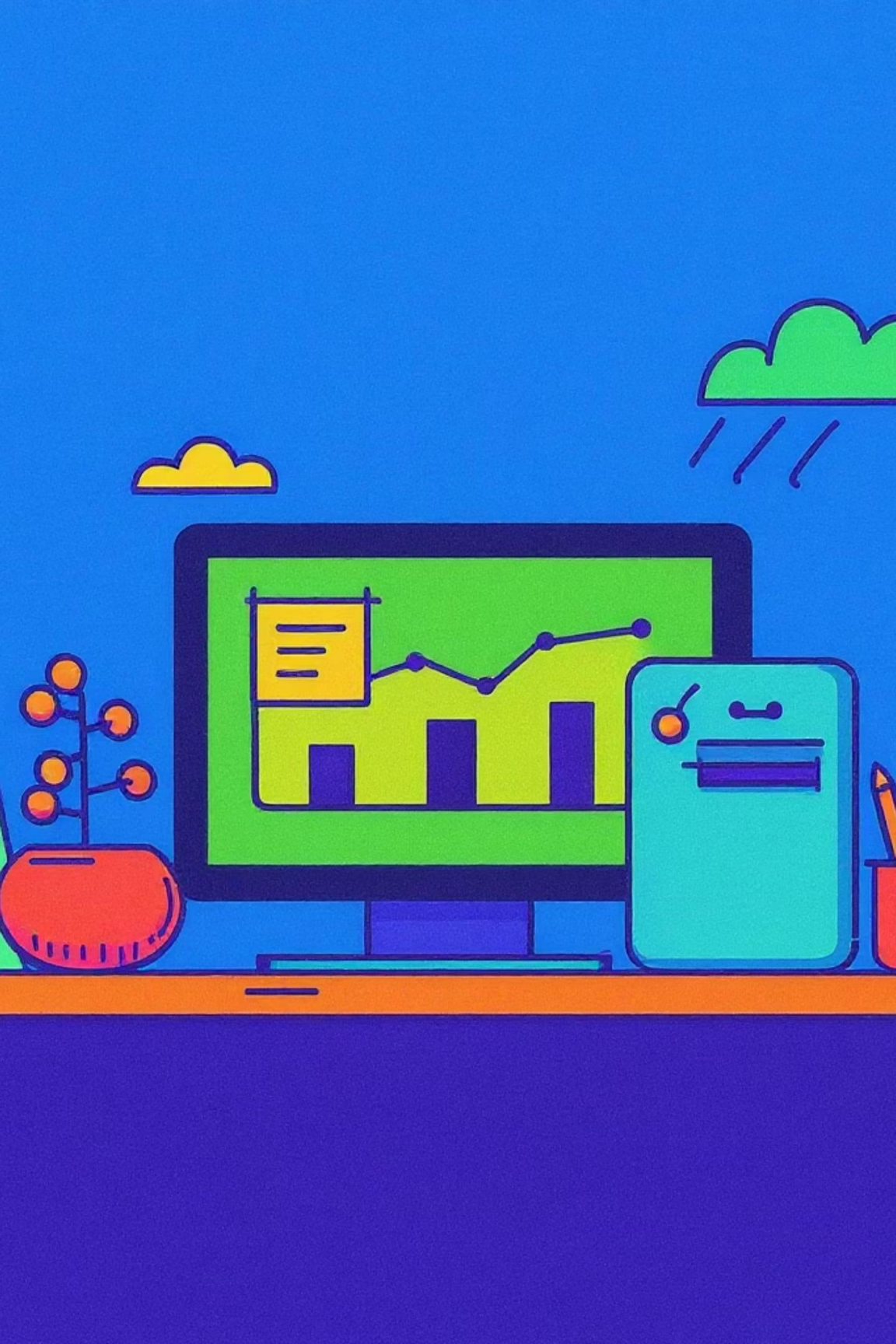
The Leadership Edge: Navigating Change in the AI Era



SEPTEMBER 2025

THE HIRING HOUR





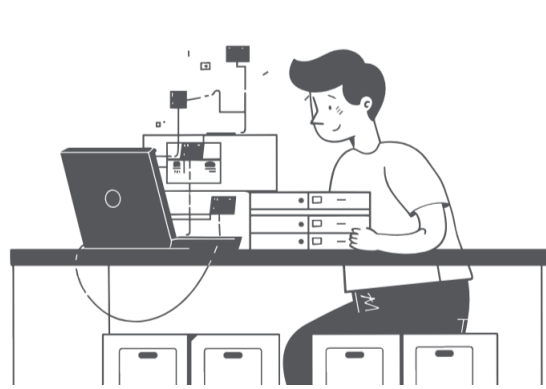
Welcome, leaders. In a rapidly evolving world, traditional leadership paradigms are being challenged. This newsletter explores how blending human intuition with strategic adaptation and mental agility will empower you to thrive amidst AI-driven change.



Section 1: The Irreplaceable Human Element

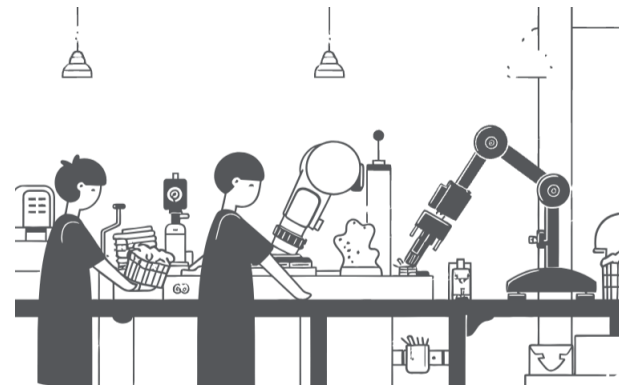
Where AI Excels

AI demonstrates unparalleled capabilities, making understanding its strengths crucial for effective human-machine collaboration.



Rapid Data Processing

AI analyzes massive datasets at speeds impossible for humans, providing real-time insights.



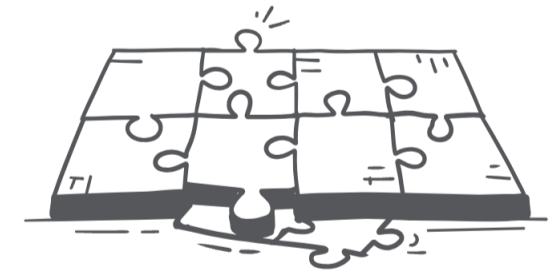
Automating Repetitive Tasks

AI excels at high-volume, repetitive tasks, freeing human talent for complex work.



Predictive Analytics

AI forecasts future trends with remarkable accuracy, from market shifts to equipment failures.



Optimization & Efficiency

AI optimizes processes and resource allocation, leading to significant operational efficiencies and cost savings.



Where AI Excels

- Analysing massive datasets quickly
- Automating repetitive tasks
- Generating content and code
- Processing information at incredible speed

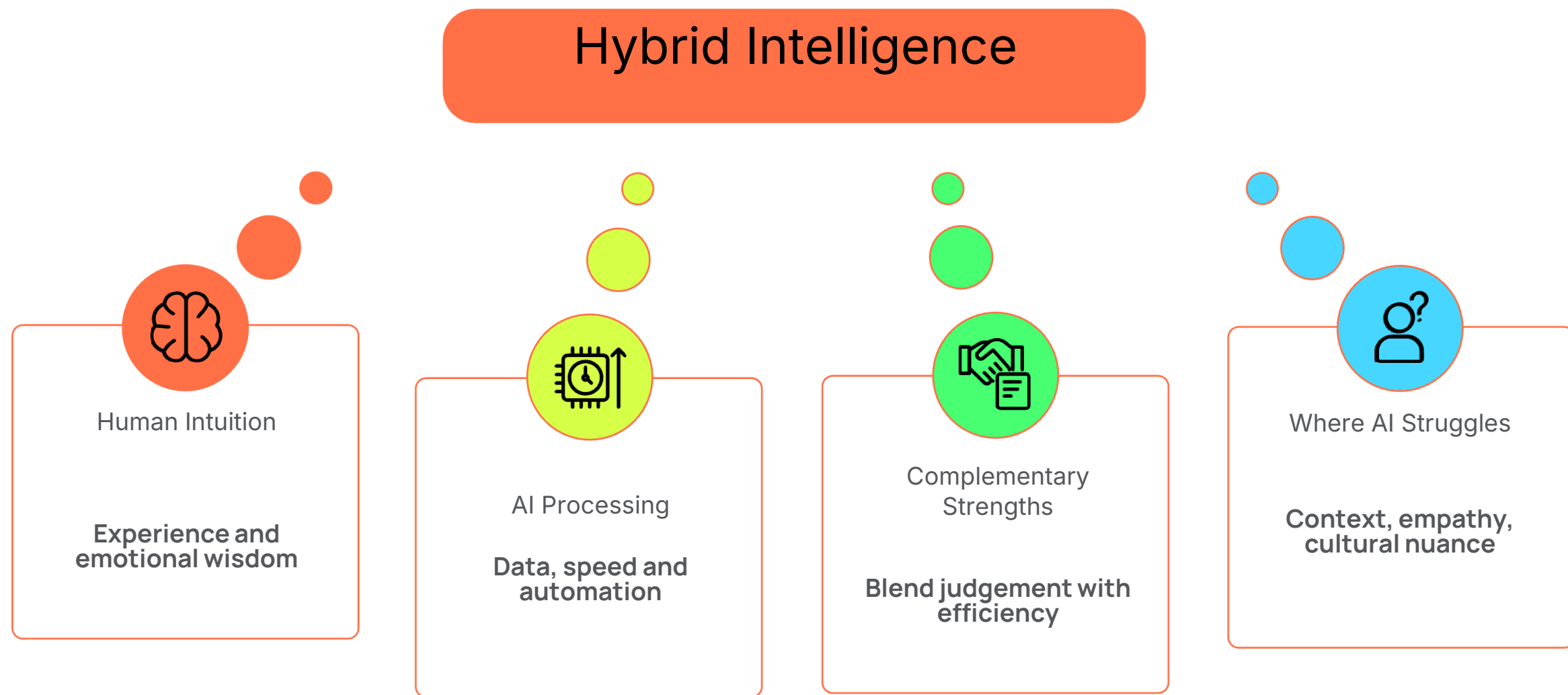
Where AI Struggles

- Reading between the lines in human interactions
- Understanding cultural nuances and context
- Making decisions based on incomplete information
- Demonstrating real empathy and emotional understanding

AI acts as a powerful assistant, optimising efficiency. However, human intuition, shaped by experience and emotional intelligence, is crucial for complex decisions, people management, and navigating subtle dynamics.



The Power of "Hybrid Intelligence"



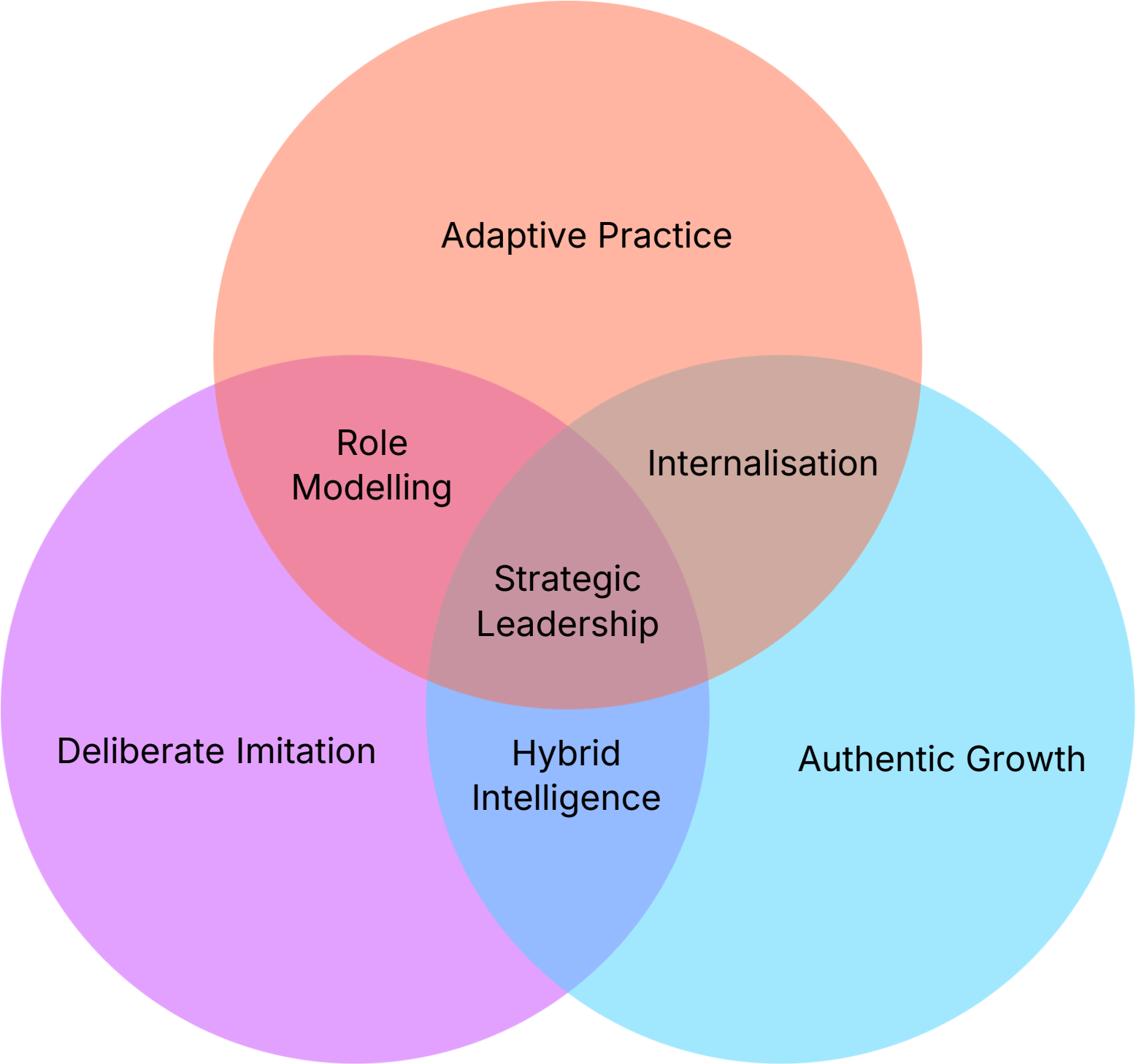
Section 2: The Art of Strategic Adaptation

"Fake It 'Till You Learn It" for Leaders

In a world of constant change, rigid authenticity can hinder growth. True leadership in the AI era demands adaptive behaviours. Sometimes, the path to authentic leadership involves consciously adopting new approaches until they become your own.



Why Strategic Imitation Works



Authenticity vs. Adaptability

Chameleons

Naturally adapt behaviour to situations without feeling fake. They have core values but willingly shift their approach to achieve goals.



True-to-Selfers

View situational demands that push them from their natural style as threats to authenticity. They define themselves by specific styles and demeanour.



The most effective leaders possess the agility of a chameleon, maintaining core values while embracing new behaviours required by evolving roles and contexts. View yourself as a work in progress.



Section 3: Cultivating Mental Agility

Why Unlearning Beats Learning: Your Secret Superpower

Unlearning isn't forgetting; it's the intentional release of outdated ideas, habits, and assumptions to create space for new, more effective ones. In today's dynamic environment, this capacity is more critical than ever.



The Unlearning Imperative

Signal

Recognise when assumptions need questioning.

Hold Space

Pause and reflect without rushing solutions.

Rebuild

Explore new possibilities intentionally.

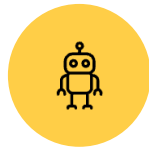
Reinforce

Support new learning with recognition and structure.

Organisations practicing unlearning adapt 72% faster to change, leading to 83% higher success in change initiatives and enhanced innovation performance.



Key Takeaways & Next Steps



Embrace Hybrid Intelligence

Combine AI's analytical power with irreplaceable human intuition for optimal decision-making.



Practice Strategic Adaptation

Be willing to "fake it 'til you learn it" to develop new leadership muscles and expand your authentic self.

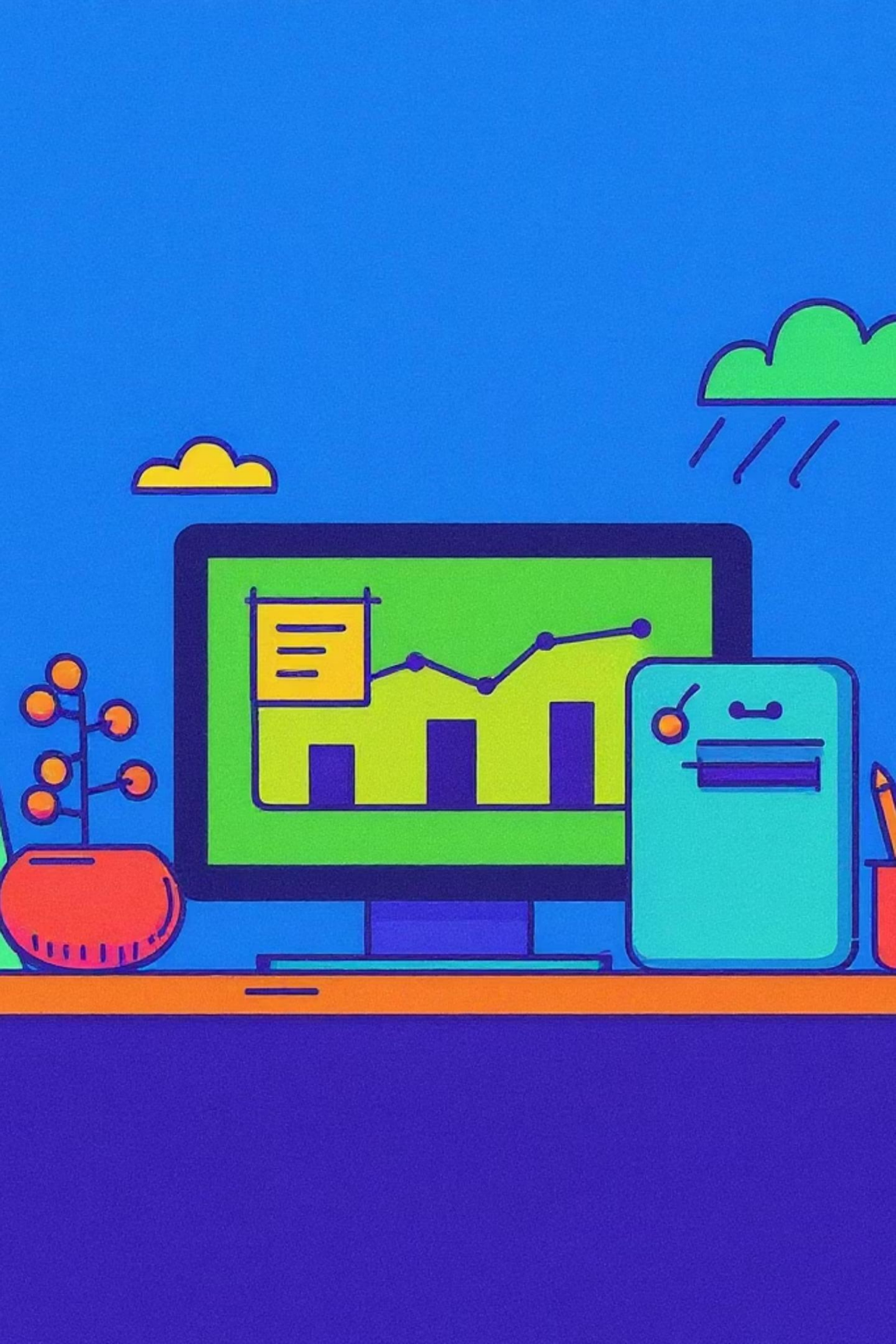


Master Unlearning

Actively shed outdated ideas to cultivate mental agility and foster continuous innovation.

The future belongs to the mentally agile leaders who blend human insight with AI efficiency, constantly adapting and unlearning to stay ahead.





ENTERPRISE HIRING SOLUTIONS

Email- info@ehs.net.in

www.ehs-talent.com

