

Ibarra

TOWNHOUSE

INNER - COMPLETE

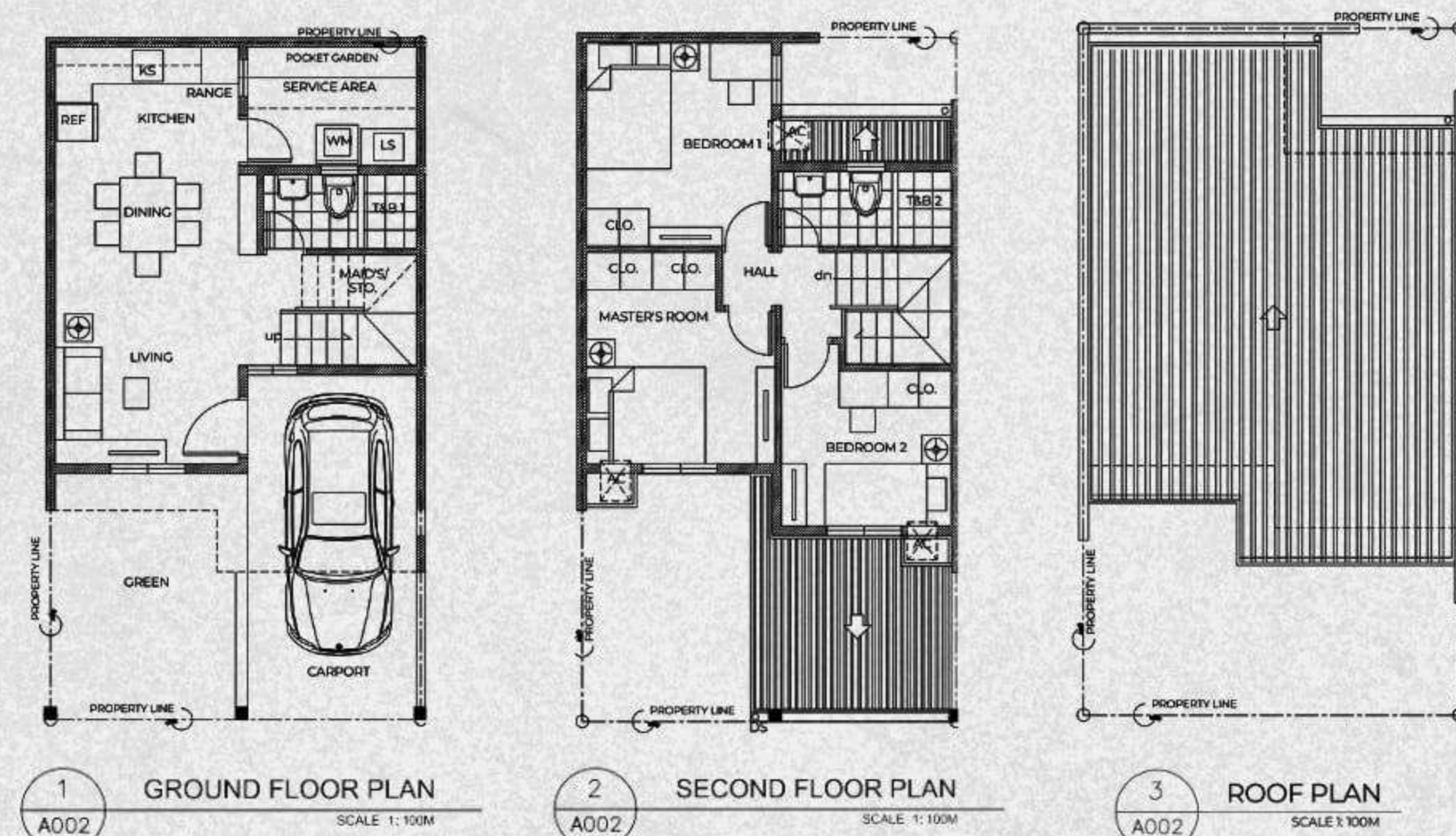


Lot Area: 66.00 sqm
House Area: 71 sqm / 93 sqm

PROPERTY FEATURES



FLOOR PLAN



SPECIFICATIONS

EXTERIOR

- **Roofing** - Prepainted Long Span Rib Type Sheets with Insulation; Steel Roof Framing
- **Windows** - Aluminum Sliding Window
- **Wall Material** - Solid Concrete, Cast-in-Place
- **Walls** - Smooth Plain Cement Finish, Painted
- **Wall Accent** - Concrete Mouldings
- **Ceiling/Eaves** - Fiber Cement Board Panel, Painted
- **Service Area Flooring** - Plain Cement Finish
- **Carport Flooring** - Cement
- **Carport Roof** - Prepainted Long Span Rib Type Sheets ; Steel Roof Framing
- **Gate** - Steel Gate
- **Fence** - Concrete with Steel Grills

INTERIOR

FLOORS:

- **Living/Dining/Kitchen** - 40cm x 40cm Ceramic Floor Tiles
- **Bedroom** - 9" x 48" Premium Vinyl Planks or equivalent
- **Toilet & Bath** - 30cm x 30cm Ceramic Floor Tiles
- **Stairs** - 9" x 48" Premium Vinyl Planks or equivalent

WALLS:

- **Living/Dining/Kitchen** - Smooth Plain Cement Finish, Painted 2 coats
- **Bedroom** - Fiber Cement Board Panel Partitions, Painted 2 coats
- **Toilet & Bath** - Smooth Plain Cement Finish, Painted with 30cm x 30cm Ceramic Tiles @ 1.20m high

CEILING

- **Ground Floor** - Slab Soffit, Plain Cement Finish, Painted 2 coats
- **Second Floor** - Gypsum Board Panel, Painted 2 coats
- **Toilet & Bath** - Fiber Cement Board Panel, Painted 2 coats

DOORS

- **Main Door** - Steel Door Honeycomb Insulation; Steel Door Jamb, Painted
- **Bedrooms** - Wooden Flush Door ; Steel Door Jamb
- **Service Area** - Wooden Flush Door ; Steel Door Jamb
- **Toilet & Bath** - Wooden Flush Door ; Steel Door Jamb

KITCHEN COUNTER

- **Kitchen Countertop** - 60cm x 60cm Ceramic Tiles
- **Kitchen Sink** - Single Bowl with Drain Board Kitchen Sink and Stainless Steel Faucet

TOILET & BATH

- **Lavatory** - Short Pedestal Wall Hung Type
- **Faucet** - Single Line Basin Faucet
- **Water Closet & Accessories** - Push Button Dual Flush Type Water with Seat Cover
- **Shower Set Fixtures** - Telephone Shower & Faucet, Single Line
- **Bathroom Accessories** - Towel Bar, Towel Ring, Tissue Holder, Soap Holder

LAUNDRY & UTILITY AREA

- **Laundry Faucet & Hose Bib** - Stainless Steel Faucet
- **Laundry Sink** - Concrete with 60cm x 60cm tiles on counter and sink
- **Laundry Area Countertop** - 60cm x 60cm Granite Tiles
- **Provision** - With Electrical & Drainage provision for Washing Machine

UTILITIES & SERVICES

- **Water Line** - PPR Pipes with Complete Fittings
- **Electrical** - Complete set of Electrical Fixtures
- **Electrical Provisions** - Wiring for provision for water heater, A/C, Electric Range & Range Hood

DISCLAIMER: HOUSE SPECS MAY CHANGE WITHOUT PRIOR NOTICE BY THE DEVELOPER.