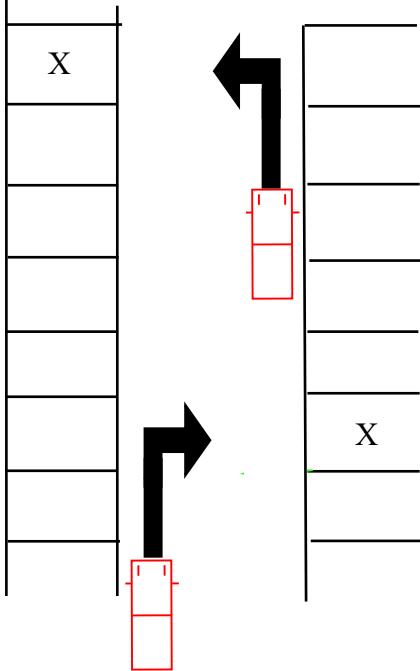


# LEFT/RIGHT FORWARD IN/REVERSE OUT BAY PARK

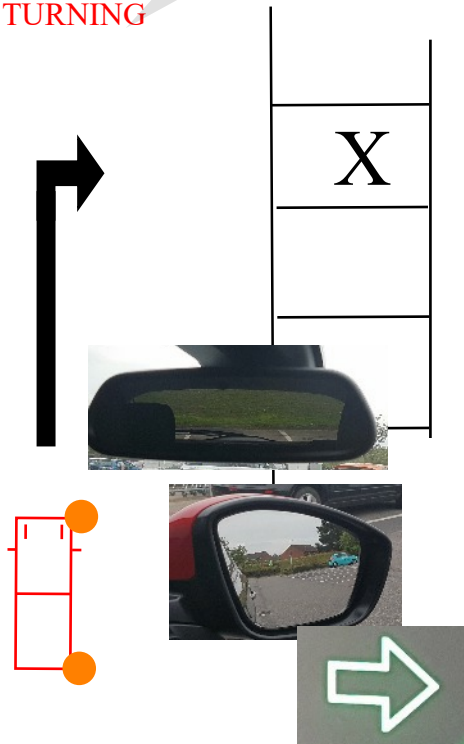
IF PARKING TO THE LEFT, KEEP TO THE RIGHT SIDE. IF PARKING TO THE RIGHT, KEEP TO THE LEFT SIDE.

*(PARKING TO THE RIGHT IS EASIER THAN THE LEFT.)*

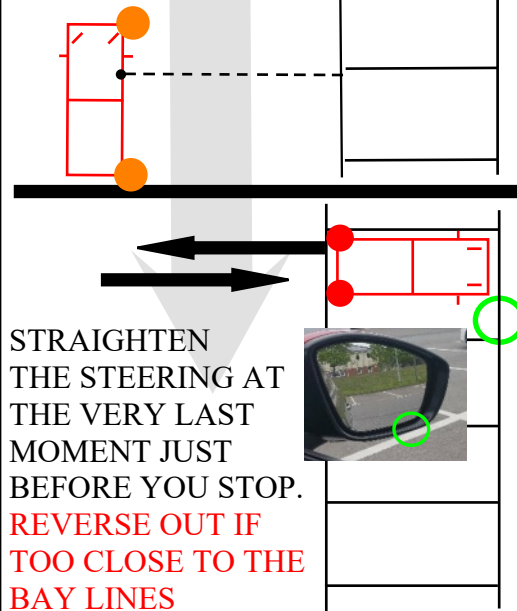


*PARKING RIGHT* - KEEP LEFT & SLOW DOWN TO CRAWL SPEED.

**VERY IMPORTANT TO LOOK IN YOUR MIRRORS & THEN GIVE A RIGHT SIGNAL BEFORE TURNING**



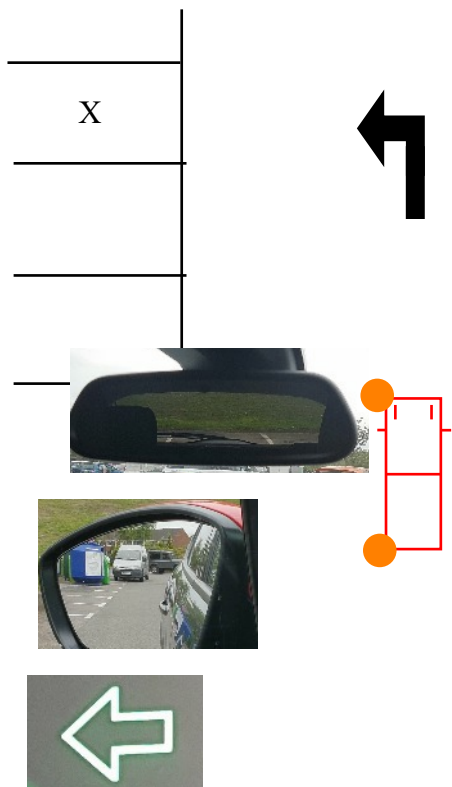
START TO STEER FULL LOCK TO THE RIGHT WHEN YOUR EYELINE LINES UP WITH THE SPACE BEFORE YOUR CHOSEN PARKING SPACE. SQUEEZE YOUR CLUTCH IN AS YOU TURN INTO THE SPACE



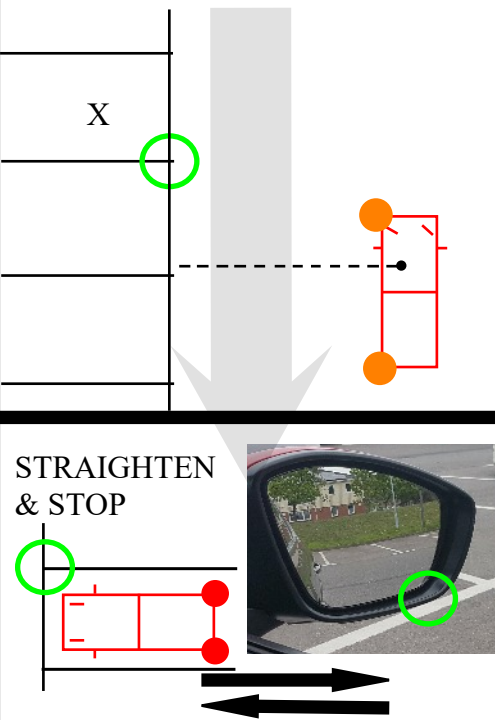
STRAIGHTEN THE STEERING AT THE VERY LAST MOMENT JUST BEFORE YOU STOP. **REVERSE OUT IF TOO CLOSE TO THE BAY LINES**

*PARKING LEFT* - KEEP RIGHT & SLOW DOWN TO CRAWL SPEED.

**VERY IMPORTANT TO LOOK IN YOUR MIRRORS & THEN GIVE A LEFT SIGNAL BEFORE TURNING**



START TO STEER FULL LOCK TO THE LEFT WHEN YOUR EYELINE LINES UP WITH THE SPACE BEFORE YOUR CHOSEN PARKING SPACE. SQUEEZE YOUR CLUTCH IN AS YOU TURN INTO THE SPACE



STRAIGHTEN & STOP

**REVERSE OUT & BACK IN AGAIN IF TOO CLOSE TO THE BAY LINES**

SELECT REVERSE. LOOK LEFT, RIGHT & BEHIND BEFORE MOVING. KEEP STRAIGHT & LOOKING AT ALL TIMES.

**DO NOT TURN THE WHEEL LEFT OR RIGHT FULL LOCK UNTIL YOURSELF IS EMERGING FROM THE BAY**

