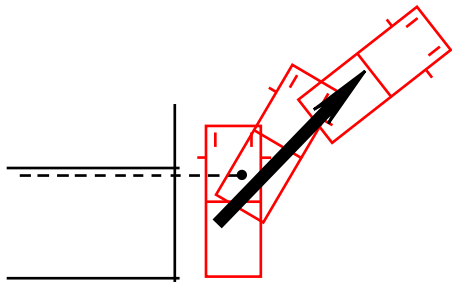


## REVERSE BAY PARK ALTERNATIVE

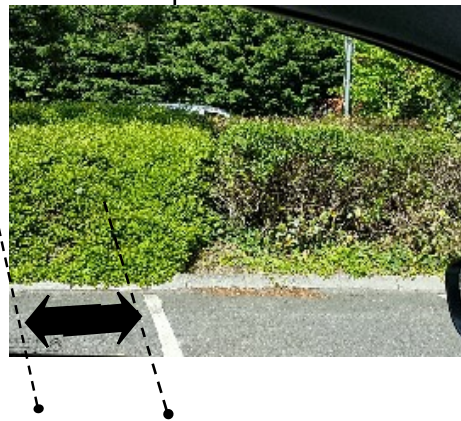
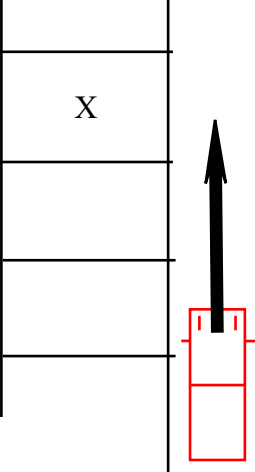
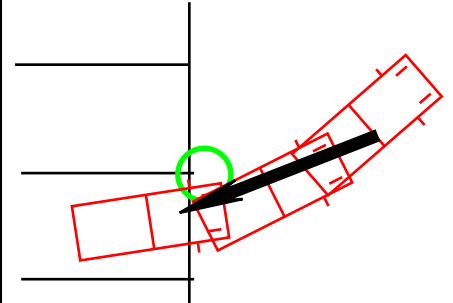
AS YOU DRIVE ALONG THE PARKING BAYS, KEEP TO THE CLOSE TO THE BAYS. SLOW RIGHT DOWN TO 1ST GEAR.



CHOOSE A BAY & AS YOU APPROACH IT, CHECK YOUR RIGHT MIRROR AND SIGNAL RIGHT, TURN FULL LOCK RIGHT WHEN YOU'RE BY THE LINE AT THE END OF THE SPACE



CHECK YOUR LEFT MIRROR AND STOP WHEN YOUR CHOSEN BAY APPEARS IN IT. YOU SHOULD KEEP TO THE RIGHT OF THE LEFT LINE.



SELECT REVERSE GEAR AND CHECK **BLIND SPOTS** IF ALL CLEAR SLOWLY START TO REVERSE AND STEER FULL LOCK LEFT.

MAKE SURE YOU CHECK AROUND AGAIN.

AS YOU REVERSE MORE THE RIGHT BAY LINE APPEARS IN YOUR RIGHT WING MIRROR.

START TO TAKE OFF YOUR STEERING TO STRAIGHTEN UP YOUR WHEELS

IF IT IS NOT LOOKING OK WITH THE SPACE THEN STOP AND SELECT 1<sup>st</sup> GEAR, MOVE FORWARD TO CORRECT IT, THEN REVERSE BACK AGAIN.

TAKE A QUICK LOOK BEHIND TO MAKE SURE ALL CLEAR, THEN LOOK OUT YOUR SIDE WINDOW FOR THE END OF THE BAY TO BE JUST UNDER YOUR WING MIRROR

YOU ARE ALLOWED TO DRIVE FORWARD AND THEN BACK INTO THE BAY IF YOU ARE NOT IN THE SPACE PROPERLY. JUST MAKE SURE YOUR OBSERVATIONS ARE OK.

