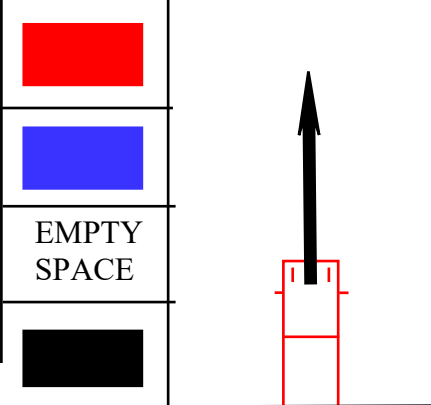
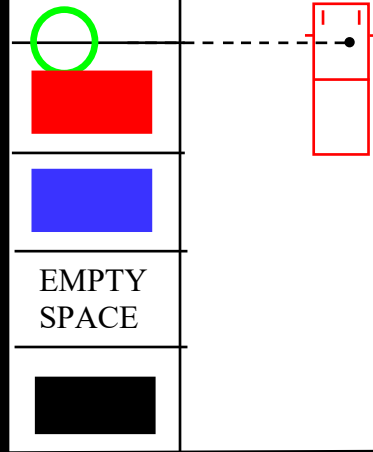


REVERSE BAY 90 DEGREE PARK

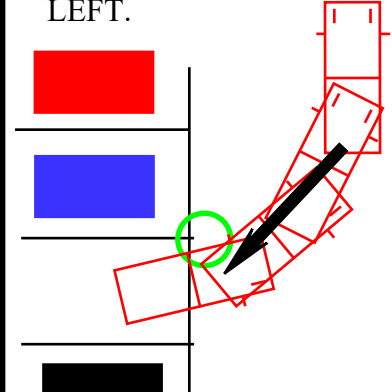
DRIVE DOWN THE MIDDLE OF THE LANE LEAVING A GOOD GAP BETWEEN YOU & THE BAYS ON YOUR LEFT



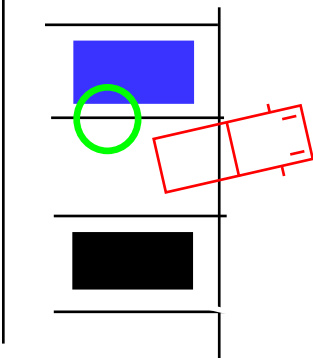
CHOOSE A BAY & CHECK YOUR MIRRORS FOR ANY FOLLOWING CARS. DRIVE PAST YOUR BAY & GO TO THE END OF BAY 2 & STOP WHEN YOU CAN LOOK DOWN THE PAINTED LINE. STOP AND HANDBRAKE ON.



VERY IMPORTANT TO CHECK YOUR RIGHT BLINDSPOT FOR ANY THING. IF ALL CLEAR, SLOWLY START TO MOVE & QUICKLY TURN FULL LOCK LEFT.



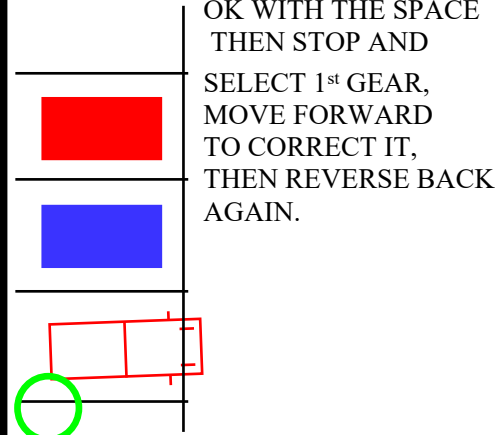
MAKE SURE YOU CHECK AROUND AGAIN & CHECK YOUR LEFT WING MIRROR TO SEE THE CAR INTO THE BAY.



AS YOU REVERSE MORE THE RIGHT BAY LINE APPEARS IN YOUR RIGHT WING MIRROR.

START TO TAKE OFF YOUR STEERING TO STRAIGHTEN UP YOUR WHEELS

IF IT IS NOT LOOKING OK WITH THE SPACE THEN STOP AND SELECT 1st GEAR, MOVE FORWARD TO CORRECT IT, THEN REVERSE BACK AGAIN.



TAKE A QUICK LOOK BEHIND TO MAKE SURE ALL CLEAR, THEN LOOK OUT YOUR SIDE WINDOW FOR THE END OF THE BAY TO BE JUST UNDER YOUR WING MIRROR



YOU ARE ALLOWED TO DRIVE FORWARD AND THEN BACK INTO THE BAY IF YOU ARE NOT IN THE SPACE PROPERLY. JUST MAKE SURE YOUR OBSERVATIONS ARE OK.