

PARALLEL PARK - WHOLE TURNS

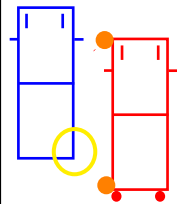


YOU WILL BE ASKED TO PULL UP ON THE LEFT A SHORT DISTANCE AWAY FROM THE OBJECT CAR.

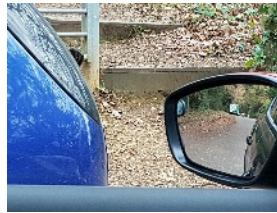
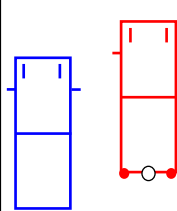
A BRIEFING GIVEN TO YOU.

THEN WHEN SAFE TO DO SO, MOVE AGAIN SLOWLY TOWARDS THE PARKED CAR.

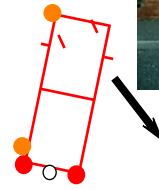
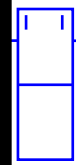
LOOK OUT THE REAR & SIDE WINDOW & **STOP** WHEN THE BACK OF THE CAR IS IN YOUR REAR SIDE WINDOW



STOP IF A VEHICLE APPROCHES AND WAIT UNTIL CLEAR



DON'T WORRY IF YOU OVER SHOOT YOUR STOP POINT. SELECT REVERSE AND CHECK AROUND YOU, IF CLEAR, REVERSE BACK TO YOUR NORMAL STOP POINT.

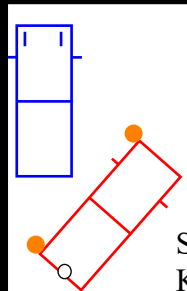


SELECT REVERSE GEAR

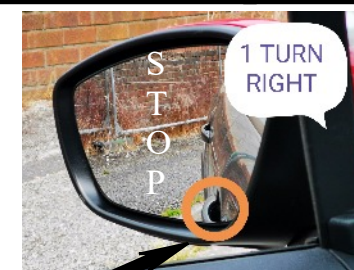
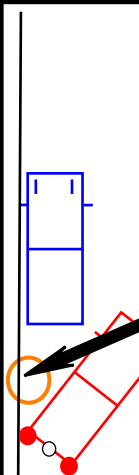
CHECK YOUR RIGHT BLIND SPOT BEFORE YOU START TO REVERSE BACK

IF CLEAR, START TO MOVE VERY SLOWLY BUT STEER LEFT 1 TURN.

LOOK AROUND FROM LEFT SHOULDER TO RIGHT SHOULDER FOR VEHICLES & PEDESTRIANS



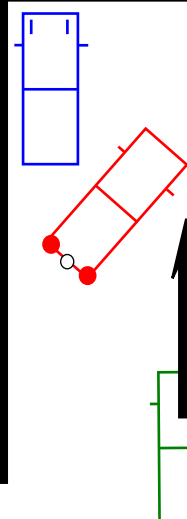
STEER 1 TURN RIGHT AS KERB APPEARS UNDER BACK DOOR HANDLE.



KEEP AN EYE ON YOUR LEFT WING MIRROR & **STOP** WHEN THE FRONT PASSENGER DOOR HANDLE IN YOUR MIRROR TOUCHES THE NEAR KERB.

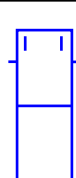
LOOK AROUND & START TO MOVE AGAIN & TURN THE WHEEL RIGHT AGAIN 1 TURN.

IF SLIGHTLY LATE, JUST TURN FULL LOCK.



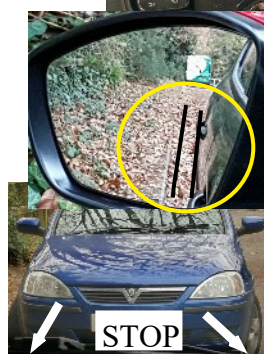
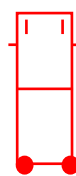
KEEP YOUR OBSERVATIONS LOOKING LEFT & RIGHT WHILST REVERSING.

STOP IF A VEHICLE APPROCHES & WAIT TO SEE IF THEY STOP OR IF THEY WISH TO DRIVE AROUND YOU - ITS THEIR PRIORITY NOT



TURN LEFT TO STRAIGHTEN YOUR TYRES & STOP WHEN YOU LOOK FAR ENOUGH AWAY FROM THE CAR.

ADJUST YOUR POSITION FORWARDS AND BACK IF YOU NEED TO, BUT YOU MUST REMEMBER YOUR OBSERVATIONS & FINISH WITHIN 2 CAR LENGTHS OF THE OBJECT CAR.



STOP