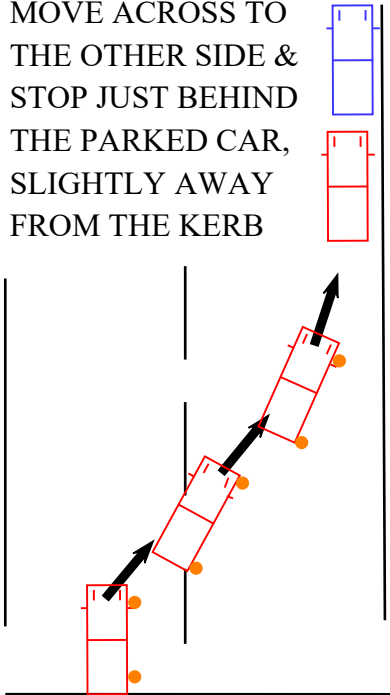
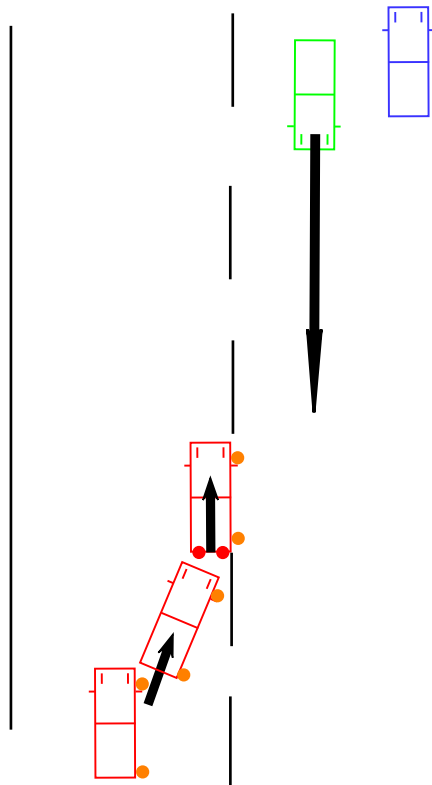


PULL UP ON THE RIGHT & MOVE OFF

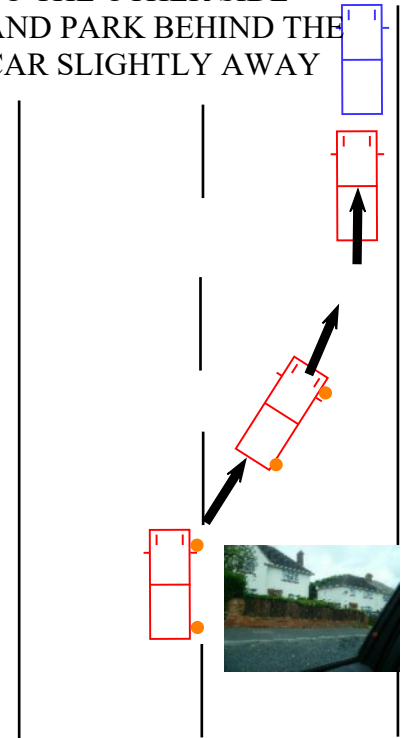
CARRY OUT YOUR MSM ROUTINE & IF CLEAR MOVE TOWARDS THE MIDDLE OF THE ROAD, IF NO ONCOMING, A QUICK BLIND SPOT CHECK AND MOVE ACROSS TO THE OTHER SIDE & STOP JUST BEHIND THE PARKED CAR, SLIGHTLY AWAY FROM THE KERB



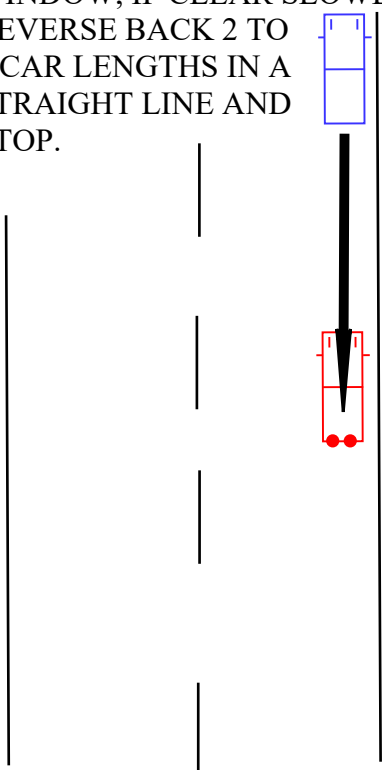
IF A CAR IS APPROACHING, WAIT IN THE MIDDLE OF THE ABOUT 5 TO 6 CAR LENGTHS AWAY AND WHEN ITS PASSED.



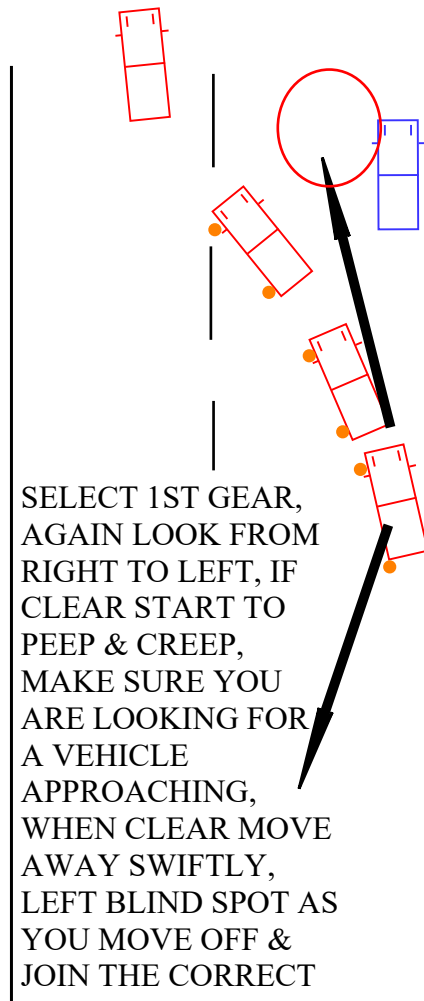
IF STOPPED, BEFORE MOVING ACROSS CHECK YOUR BLIND SPOT AND IF ALL CLEAR, MOVE TO THE OTHER SIDE AND PARK BEHIND THE CAR SLIGHTLY AWAY



SELECT REVERSE GEAR, LOOK FROM RIGHT SHOULDER AROUND TO THE LEFT SHOULDER AND KEEP LOOKING OUT OF THE REAR WINDOW, IF CLEAR SLOWLY REVERSE BACK 2 TO 3 CAR LENGTHS IN A STRAIGHT LINE AND STOP.



SELECT 1ST GEAR, AGAIN LOOK FROM RIGHT TO LEFT, IF CLEAR START TO PEEP & CREEP, MAKE SURE YOU ARE LOOKING FOR A VEHICLE APPROACHING, WHEN CLEAR MOVE AWAY SWIFTLY, LEFT BLIND SPOT AS YOU MOVE OFF & JOIN THE CORRECT SIDE



IF A VEHICLE COMES INTO VIEW STOP & WAIT UNTIL THEY PASS, CHECK AROUND THE CAR AGAIN BEFORE MOVING OFF THE ONCOMING CAR MAY STOP TO LET YOU OUT, IF SO MAKE SURE ALL CLEAR FROM BEHIND AND MOVE OFF

