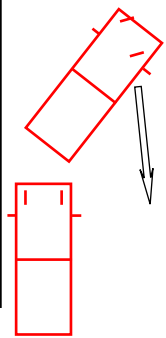


TURN IN THE ROAD

YOU WILL BE ASKED TO PULL UP ON THE LEFT, SECURE THE CAR.

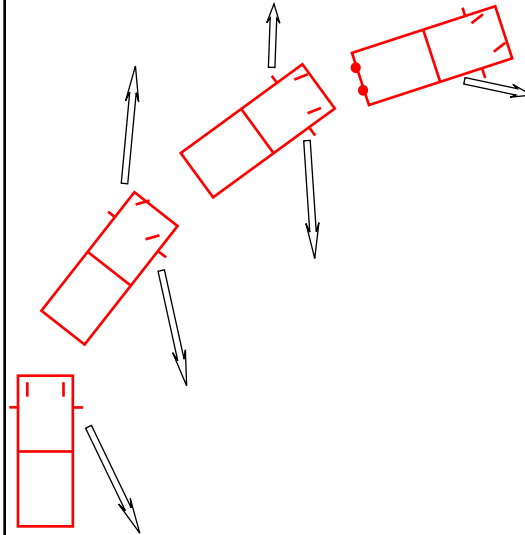
POM, IF CLEAR RELEASE THE H/BRAKE & MOVE SLOWLY WHILST TURNING THE WHEEL FULL LOCK TO THE RIGHT AS BRISKLY AS YOU CAN.

ENSURE OBS UP & DOWN THE ROAD, LOOKING FOR VEHICLES & PEDESTRIANS

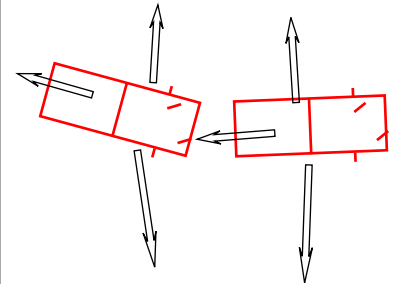


AS YOU APPROACH THE FAR KERB PUSH YOUR CLUTCH DOWN & START TO TURN THE WHEEL LEFT UNTIL YOU REACH YOUR REFERENCE POINT

STOP, SECURE THE CAR & SELECT REVERSE GEAR.

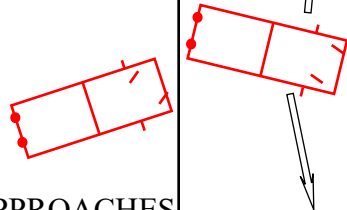
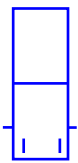
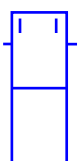


POM, IF CLEAR RELEASE THE H/BRAKE & LOOKING OUT OF THE REAR SCREEN START TO MOVE THE CAR, CONTINUE TO STEER FULL LOCK TO THE LEFT.



ENSURE ALL OBS UP, DOWN AND BEHIND FOR VEHICLES & PEDESTRIANS.

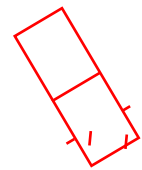
IF A VEHICLE APPROACHES STOP, SECURE THE CAR & WAIT TO SEE WHAT THEY DO. IF THEY GO AROUND YOU LET THEM. IF THEY ARE PREPARED TO WAIT THEN POM & RELEASE THE H/BRAKE THAT VEHICLE IS NOW YOUR MAIN PRIORITY BUT MAKE SURE ALL OBS ARE DONE AS WELL.



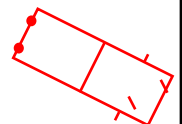
AS YOU APPROACH THE REAR KERB PUSH YOU CLUTCH DOWN & START TO TURN THE WHEEL RIGHT UNTIL YOU REACH YOUR REFERENCE POINT

STOP, SECURE THE CAR & SELECT 1ST GEAR

POM, IF CLEAR RELEASE THE H/BRAKE & LOOKING RIGHT & LEFT START TO MOVE THE CAR & CONTINUE TO STEER RIGHT UNTIL YOU ARE ABLE TO DRIVE ON DOWN THE ROAD.



IF YOU DO NOT MANAGE TO MAKE THE TURN, STOP & REPEAT THE REVERSE PART AGAIN OF THIS MANOEUVRE, FOLLOWED BY THE FORWARD PART AGAIN



ENSURE ALL OBS ARE CARRIED THROUGHOUT THIS MANOEUVRE