

BEATING BUTTON BATTERIES

in the Emergency Department



WHO To Suspect?

Often <6 years old

Symptoms:

- Can be asymptomatic
- Often mistaken for croup or acute otitis media
- Fever
- Difficulty swallowing, drooling
- Decreased energy, crying, malaise

WHAT To Give?

If <12 hours since ingestion...

Sucralafate

10mL p.o q10 min
up to 3 doses



Honey

10mL p.o q10 min
up to 6 doses



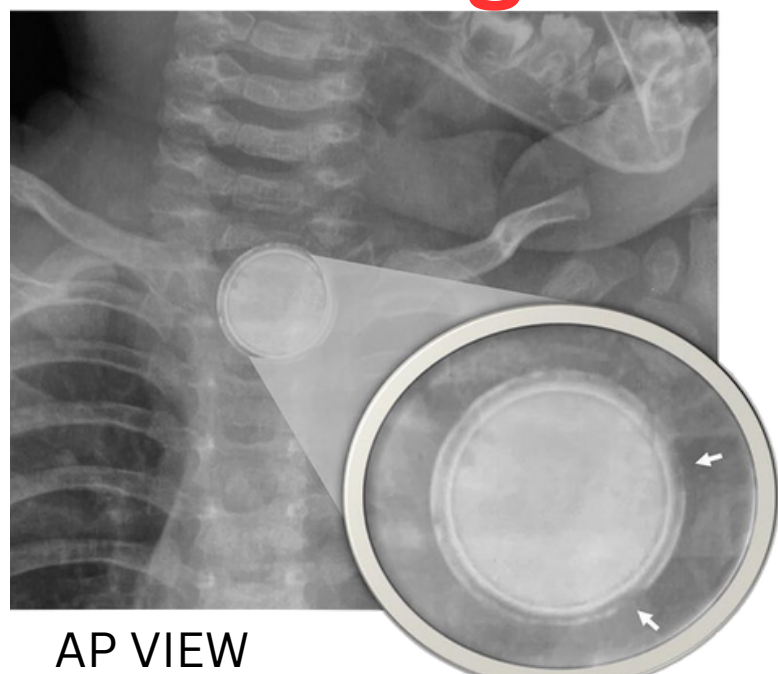
Even if <1 year old, benefits outweigh risks and honey/sucralafate should be given to neutralize the battery

HOW To Investigate?

X-ray neck is quick and reliable

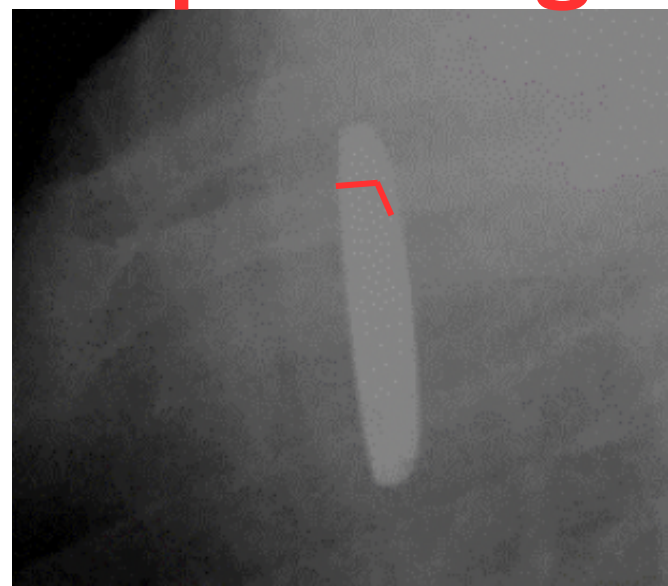
ensure to check AP & Lateral view

"Halo Sign"



AP VIEW

"Step-Off Sign"



LATERAL VIEW

Created by two sides of button battery,
differentiates batteries from coins

WHERE To Go Next?

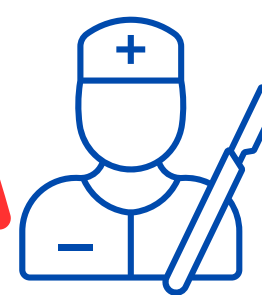
If **above** the pyloric
sphincter...

If **below** the pyloric
sphincter...

Call ENT!



Call GI!



For urgent operation
to remove the button
battery



WHEN?

- Serious injury can occur in **<2 hours**
- **NOTHING** should delay treatment
- Urgent, safe removal of the button battery should instantly become your top priority

WHY?

- 3500 button batteries are ingested in the USA yearly, and incidence rates continue to increase
- Button batteries can cause serious complications or death, even weeks to months after initial ingestion

Learn more at www.beatingbuttonbatteries.com